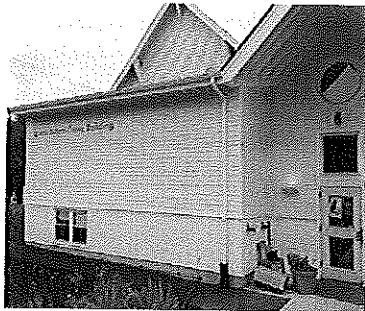

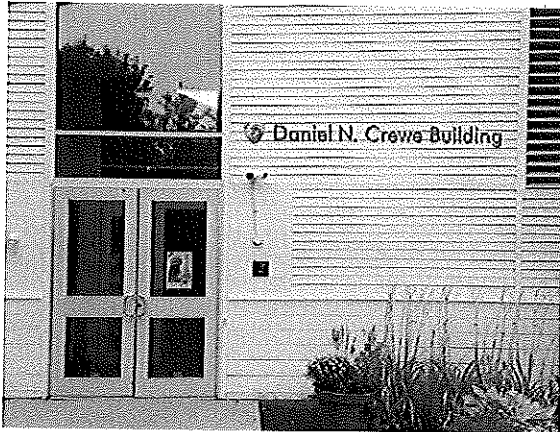
 Jessie Bullens-Crewe Building

SQUARE FOOTAGE  
17 SQ FT



 Daniel N. Crewe Building

SQUARE FOOTAGE  
7 SQ FT



9.22 "X 10P53"  
(7 SF)

Approved By: \_\_\_\_\_

Date: \_\_\_\_\_

©2014 Welch Signage, All Rights Reserved. All information contained in this drawing is confidential, do not distribute do not reproduce.

**Non-ADA Fabricated Signs Specifications**

Job Name: Breakwater School	
Job #: 15493	
Customer Name: Breakwater School	
Scope: Donor Letters	
Sales Rep: BR	Drawn By: JK
Revision #: 4	
Date: 2/19/2015	
File Location: Breakwater School 15493	
<b>WELCH SIGNAGE</b> EST. 1964	207.683.6200 www.welchusa.com

**Sign Components**

Face Material: 1/2" PVC
Edges: Straight
Corners: Square
West System: No
Insert: NA
1st Surface Color: Breakwater Colors TBD
2nd Surface Color: NA
Vinyl Color: NA
2nd Layer Material: NA
1st Surface Color: NA
2nd Surface Color: NA
Sides: Single

**Graphic Content**

Process: Stud Mounted Letters
Copy Height: See Drawing
Copy Style: Futura Book
Copy Color: Breakwater Blue TBD

**Mounting**

Hardware: NA	
Holes: NA	
Mounting Location: See Photo	
Tape: NA	
Mounting Surface: Wood	
Glass Backer mat: Vinyl NA	Color: NA

**Frame**

Type: NA
Size: NA
Color: NA