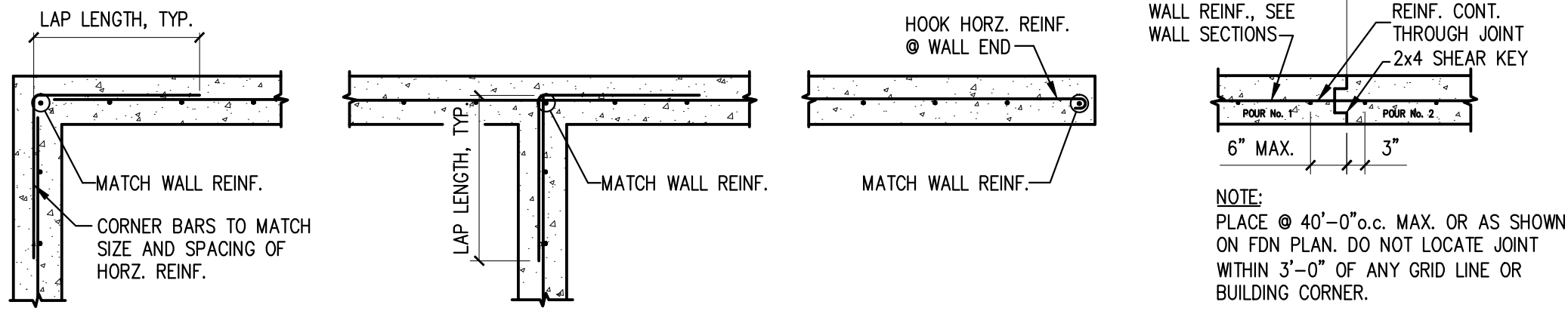


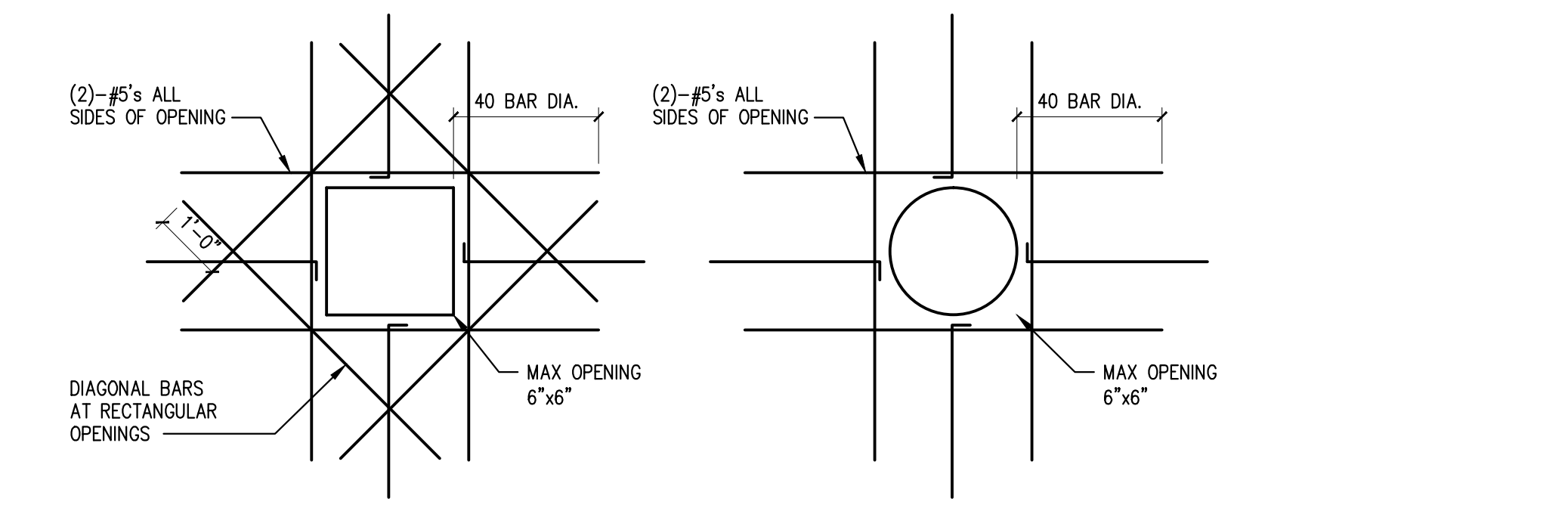
TYPICAL SLAB-ON-GRADE DETAILS

SCALE: NTS



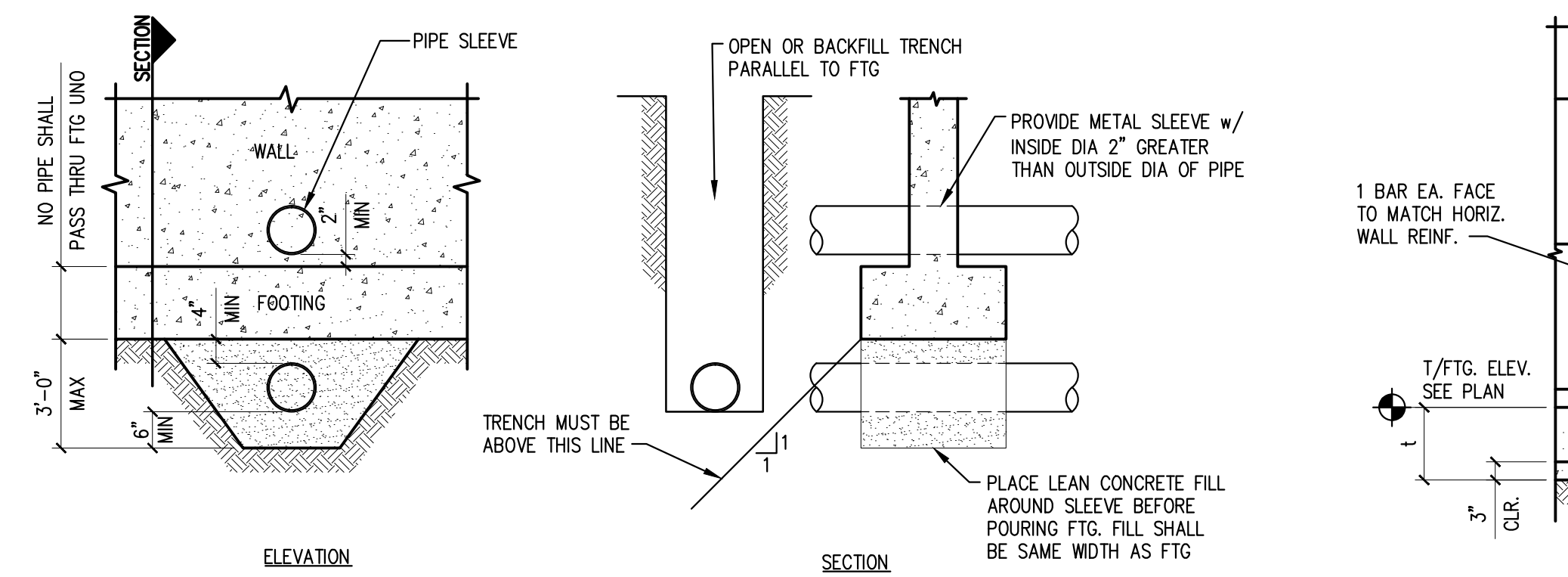
TYPICAL FOUNDATION WALL DETAILS

SCALE: NTS



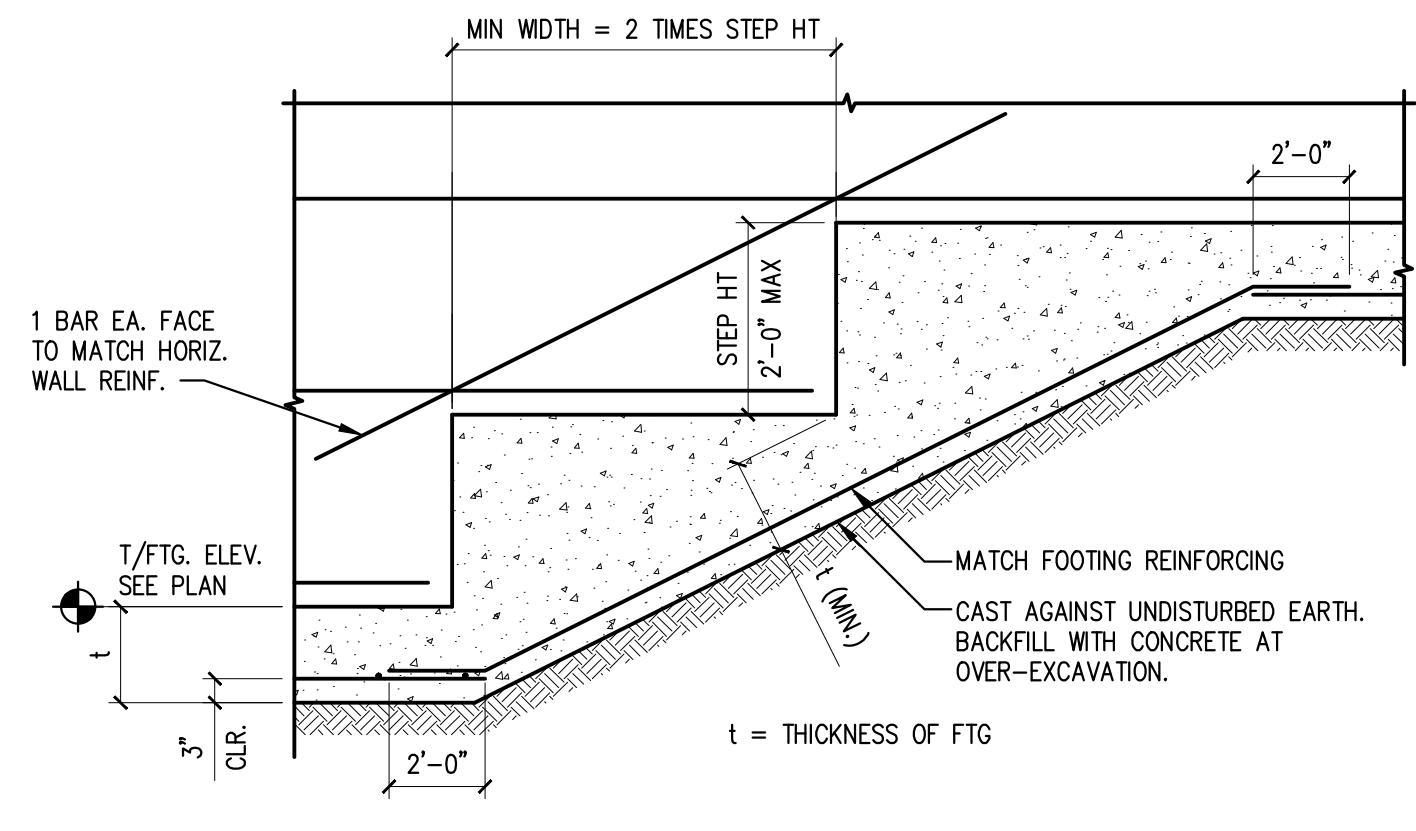
TYPICAL OPENING IN WALL OR SLAB DETAIL

SCALE: NTS



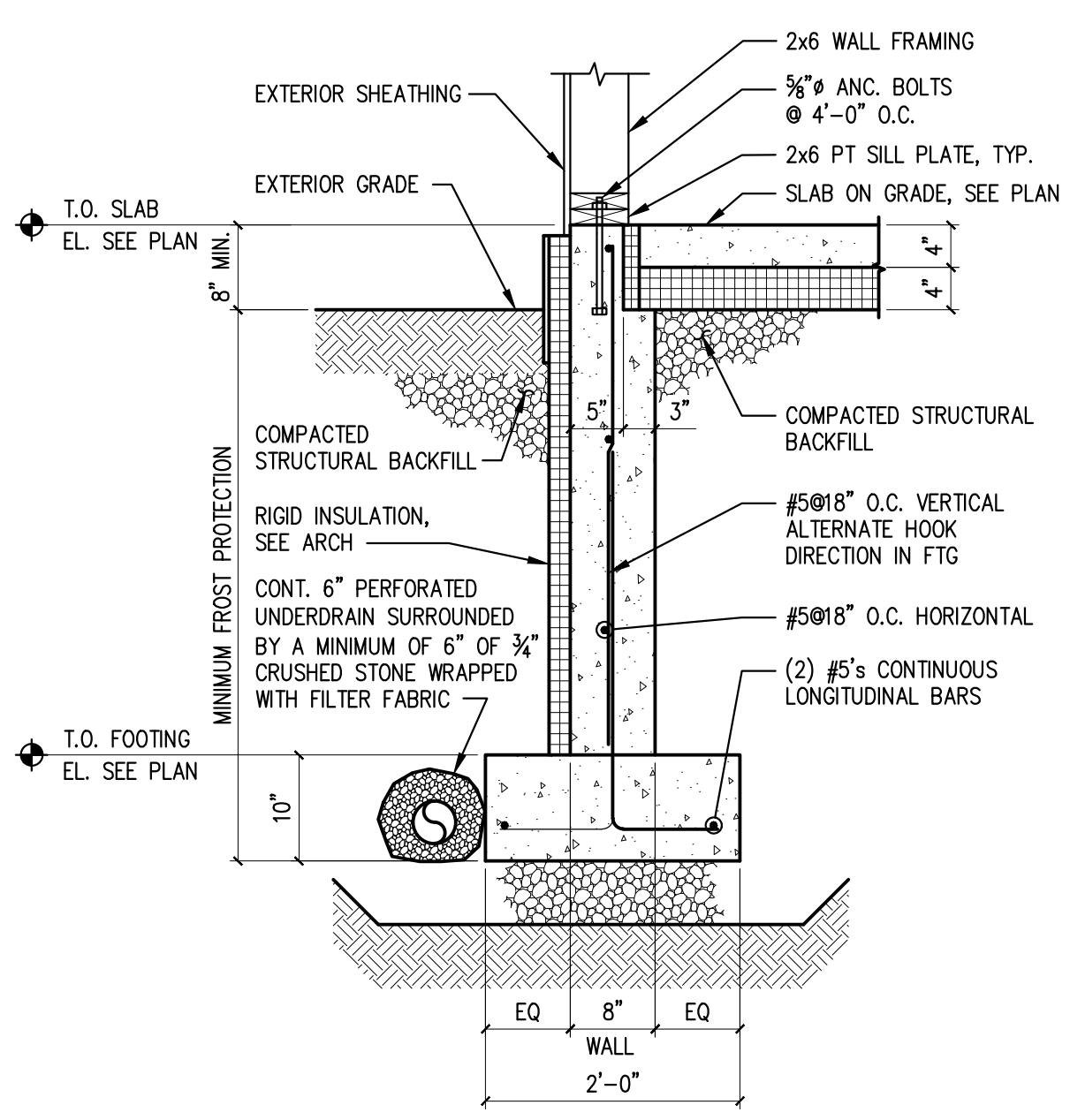
TYPICAL THROUGH WALL PENETRATION DETAIL

SCALE: NTS



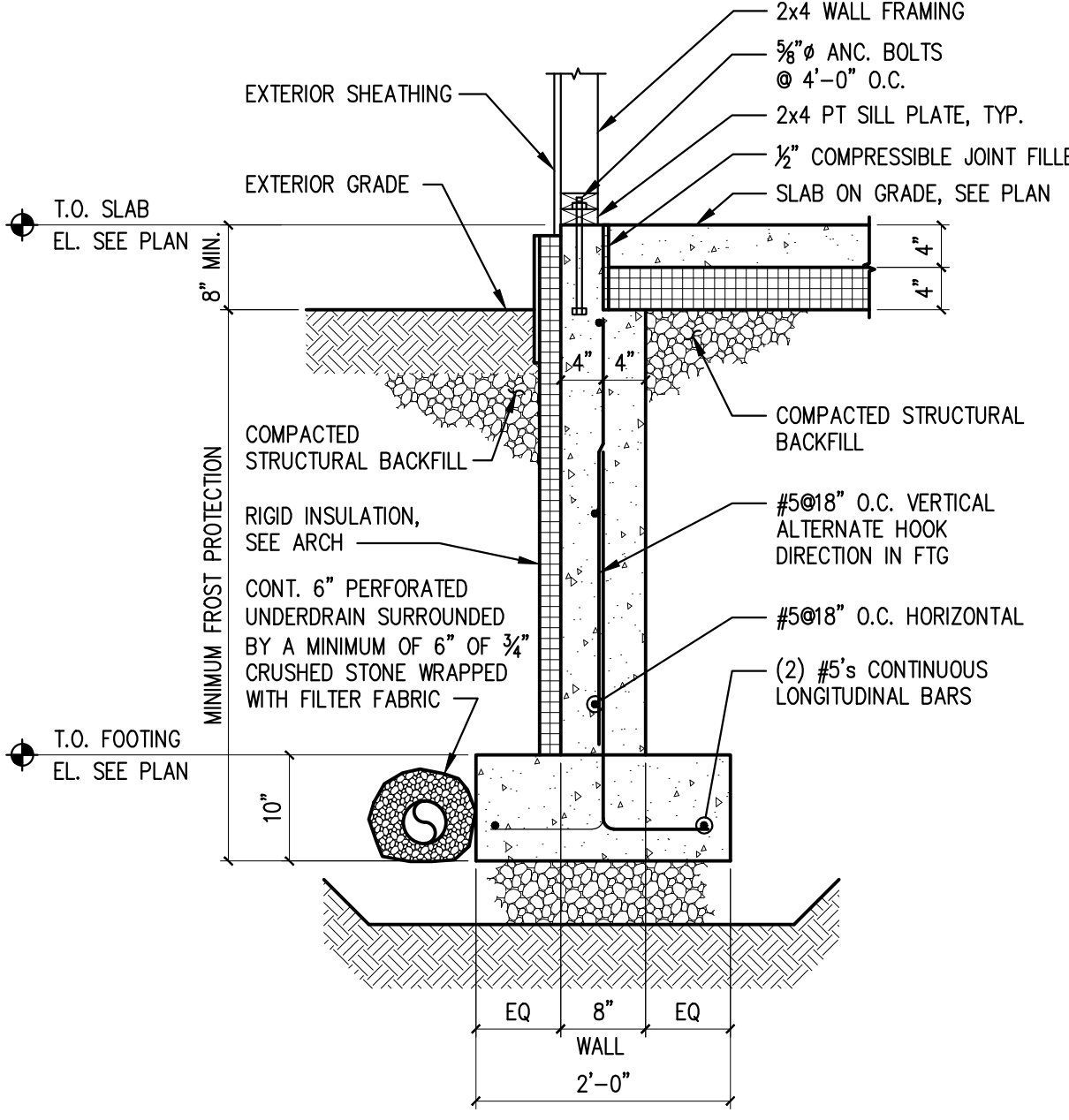
TYPICAL STEPPED FOOTING DETAIL

SCALE: NTS



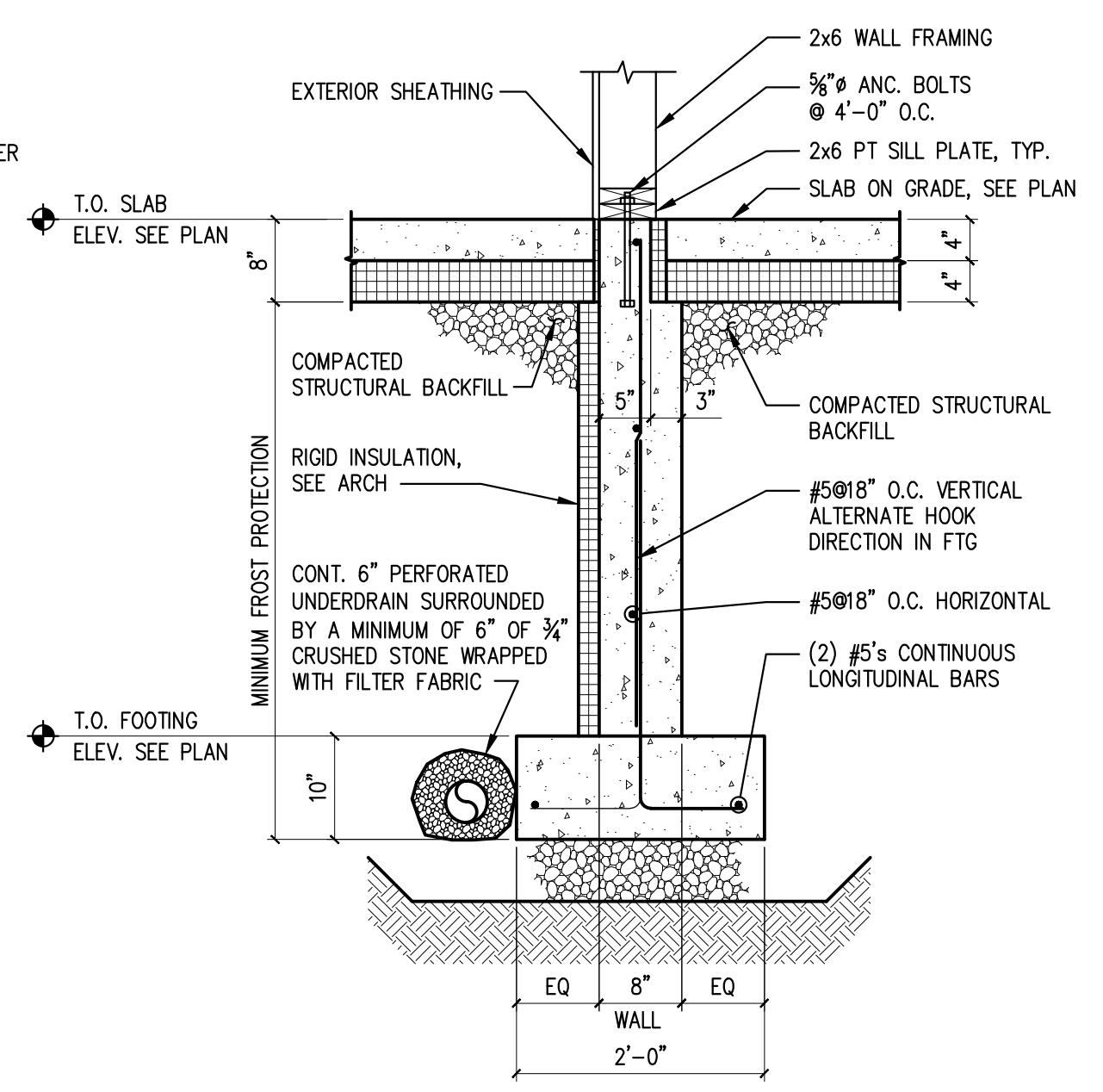
1 SECTION

3/4" = 1'-0"



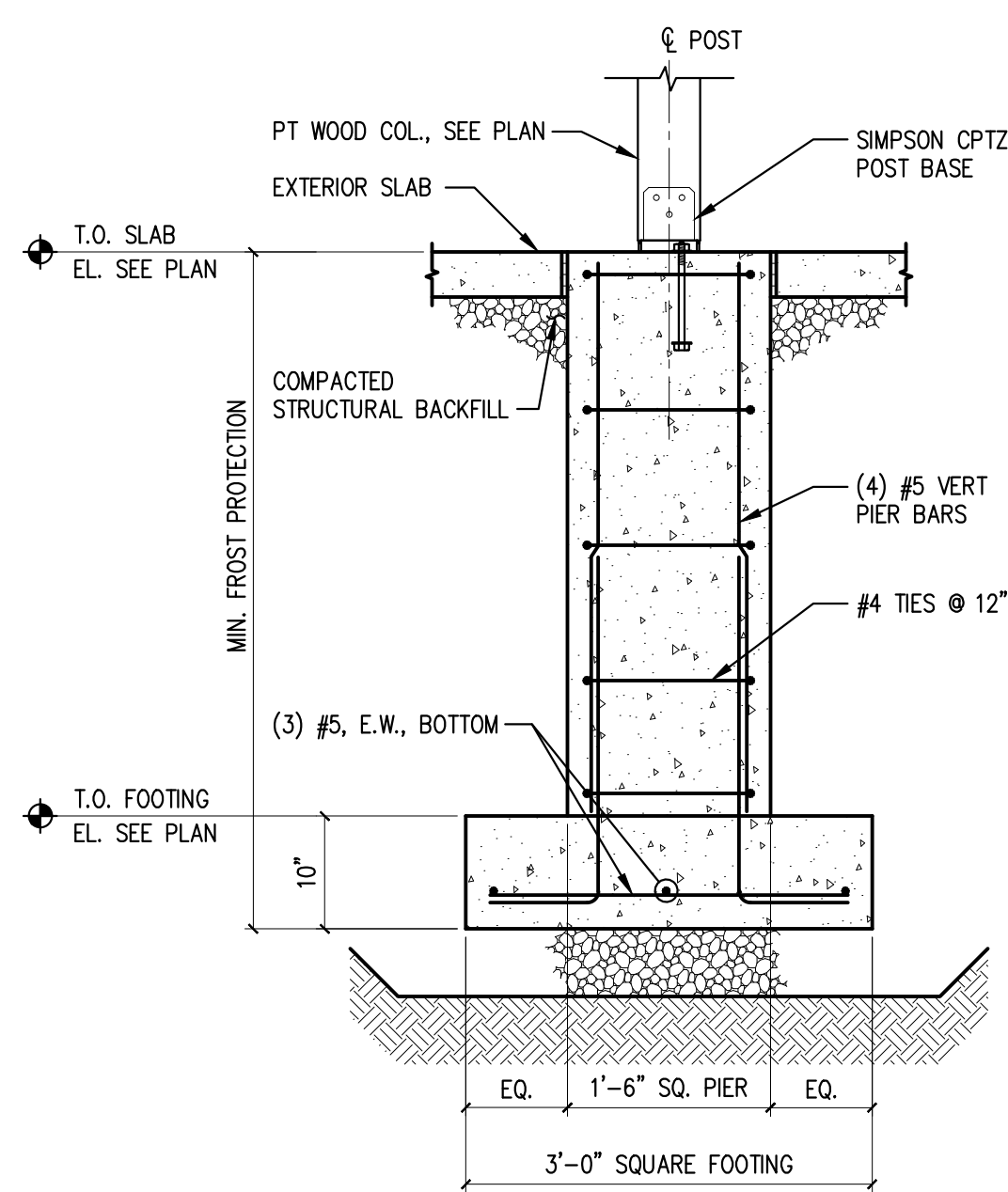
2 SECTION

3/4" = 1'-0"



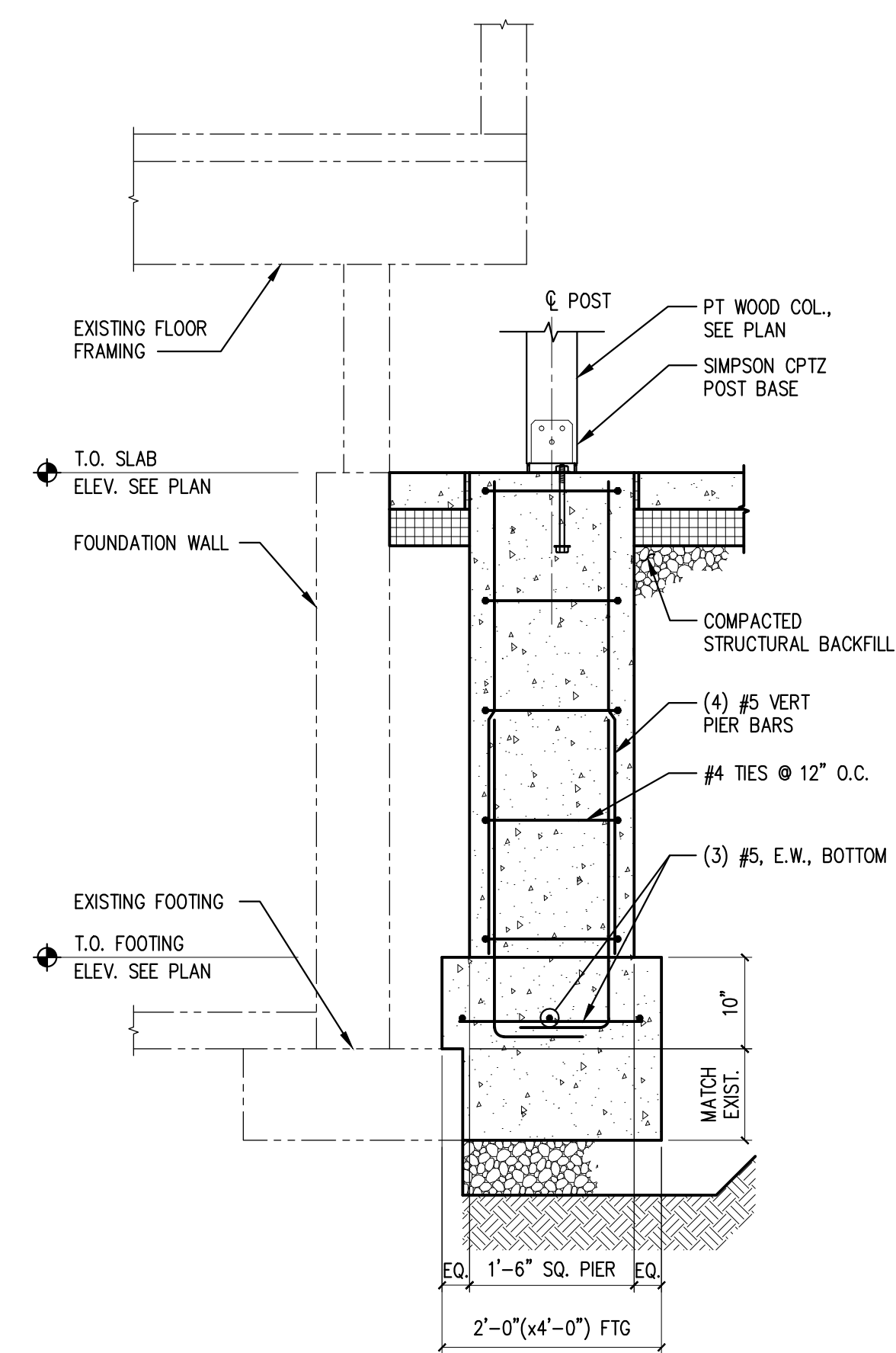
3 SECTION

3/4" = 1'-0"



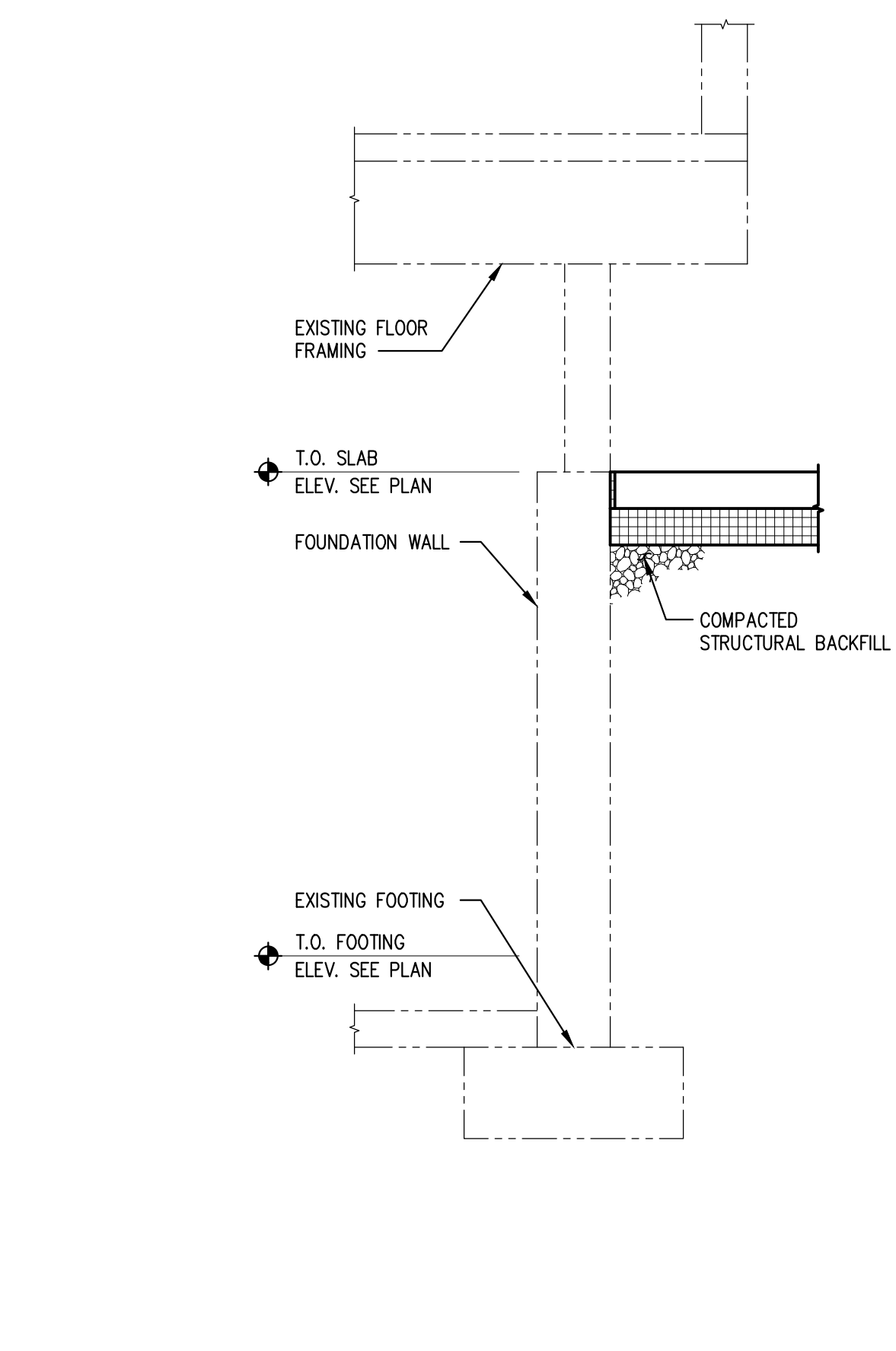
4 SECTION

3/4" = 1'-0"



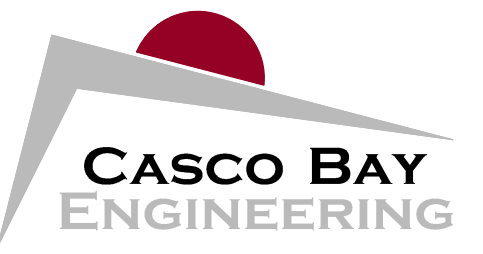
5 SECTION

3/4" = 1'-0"



6 SECTION

3/4" = 1'-0"



424 Fore Street
Portland, ME 04101
Phone 207.842.2800
Fax 207.842.2828
www.cascobayengineering.com

CLIENT:
RICHARD RENNER ARCHITECTS
35 PLEASANT AVE.
PORTLAND, MAINE

REDMAN RESIDENCE : STUDIO ADDITION
480 CAPISIC STREET
PORTLAND, MAINE

BUILDING ADDITION

ISSUED	DESCRIPTION	DR.	CHKD.	DATE
	ISSUED FOR PERMIT			6-22-15
No.	A			

SHEET TITLE:
CONCRETE SECTIONS AND DETAILS

DESIGNED: PR
DRAWN: PR
DATE: 3-24-15
PROJECT NUMBER: 15-048

S2.1

PRINTED: Jun 22, 2015