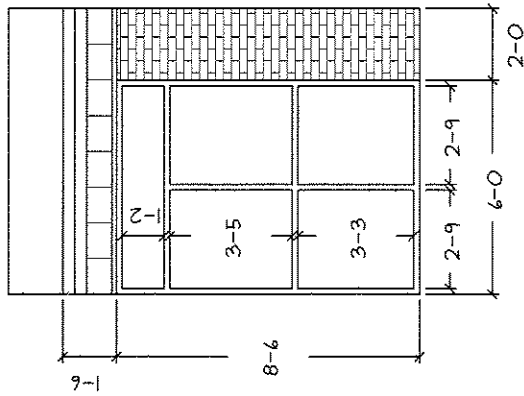


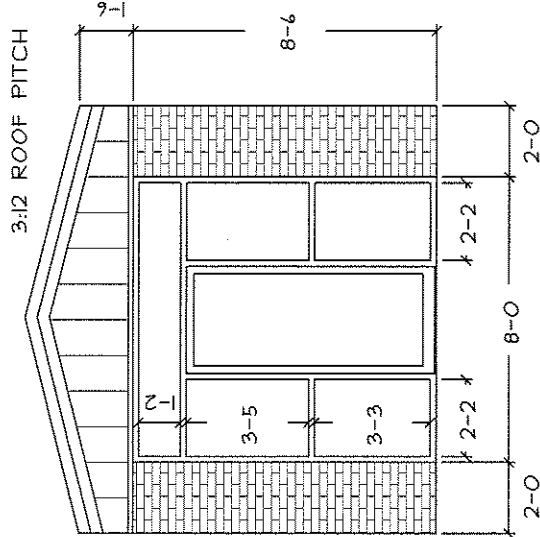
NOTE:

STOREFRONT SHALL BE MANUFACTURED BY VISTAWALL WITH BRONZE ALUMINUM TUBING.

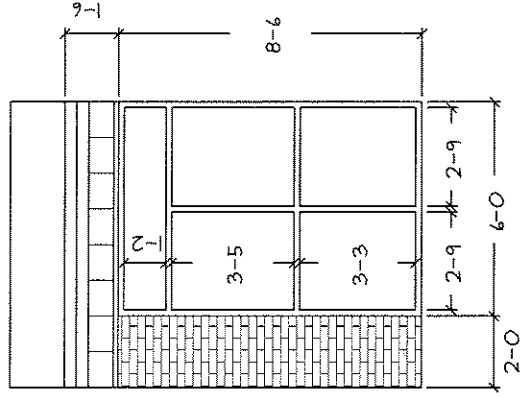
"U" VALUE OF STOREFRONT SHALL BE U-0.43 SHGC SHALL BE 0.38



LEFT ELEVATION



FRONT ELEVATION



RIGHT ELEVATION

VESTIBULE
SCALE: 3/16" = 1'-0"