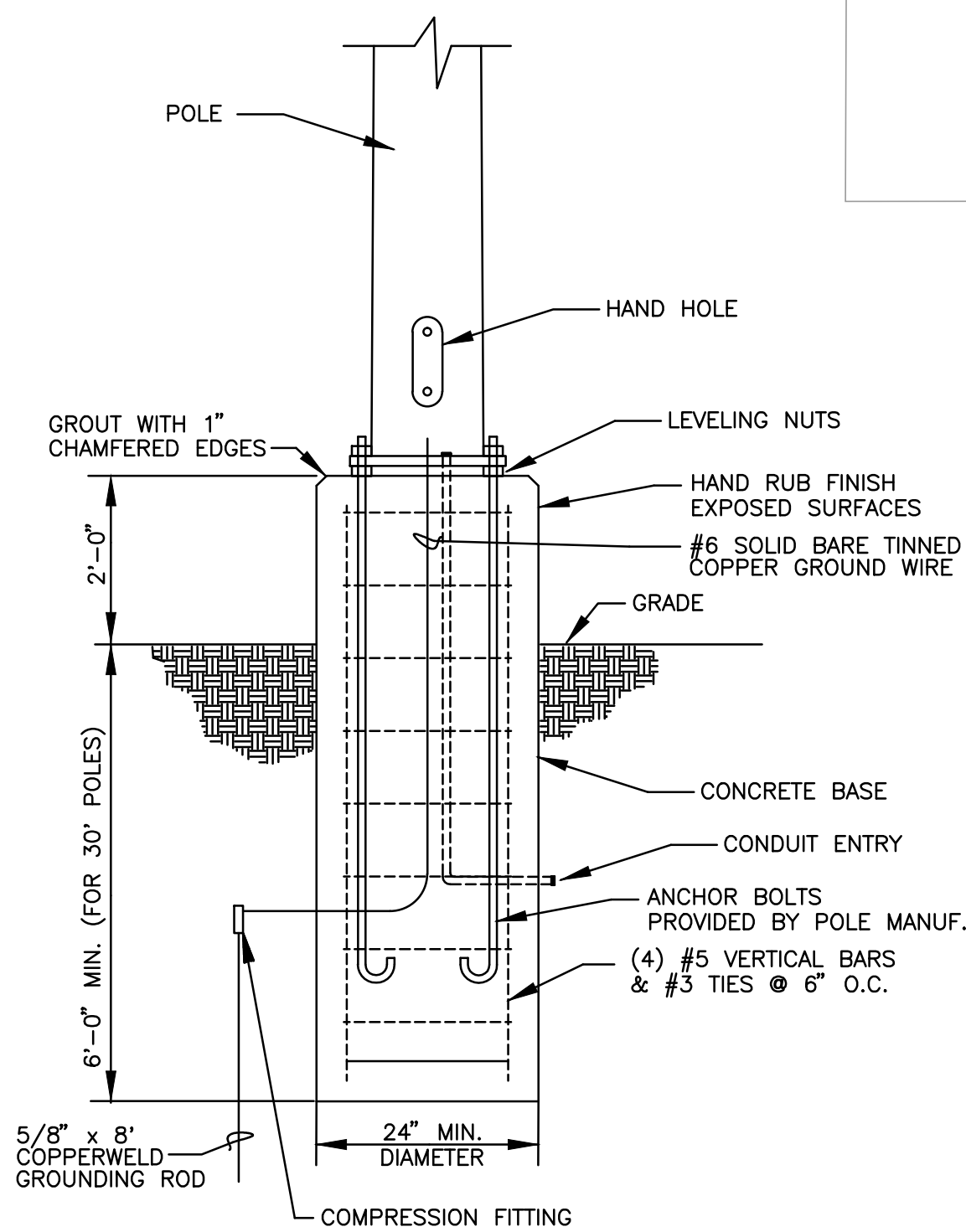
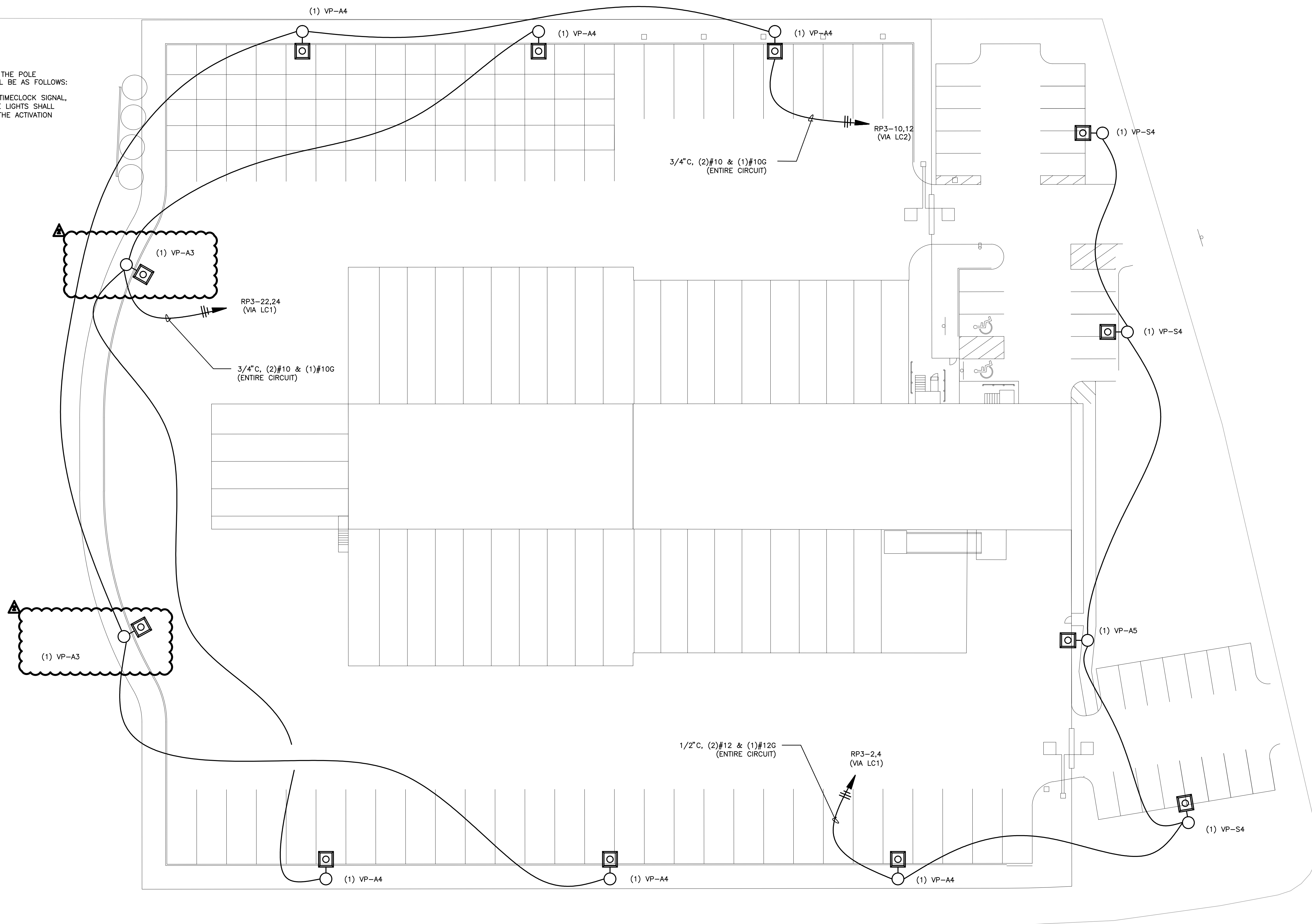


**SITE LIGHTING NOTES:**

- TWO SEPARATE CONTROL CONFIGURATIONS SHALL BE PROVIDED FOR THE POLE FIXTURES AND ARE DENOTED AS 'LC1' AND 'LC2'. OPERATION SHALL BE AS FOLLOWS:  
 'LC1' - CIRCUITS CONTROLLED STRICTLY BY TIMECLOCK SCHEDULE.  
 'LC2' - CIRCUITS SHALL BE CONTROLLED BY A COMBINATION OF A TIMECLOCK SIGNAL, A PHOTOCELL, AND A SIGNAL FROM THE RFID/GATE SYSTEM. THESE LIGHTS SHALL OPERATE 1) BASED UPON THE TIMECLOCK SCHEDULE OR 2) UPON THE ACTIVATION OF THE PHOTOCELL AND A SIGNAL FROM THE RFID/GATE SYSTEM.

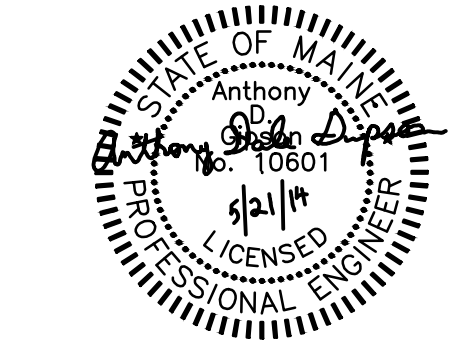


FIXTURE TYPE 'VP-S4', 'VP-A4', & 'VP-A5' POLE BASE DETAIL  
 NOT TO SCALE

FIXTURE SCHEDULE							
TYPE	MANUFACTURER	CATALOG #	LAMPS	VOLTAGE	MOUNTING	TYPE/REMARKS	
VP-A3	BEACON	VP-L-96NB-280-SK-T3-208-BZ	LED	208	POLE	SITE LIGHTING, MOUNTED 20' AFG.	
VP-A4	BEACON	VP-L-96NB-280-SK-T4-208-HSS-BZ	LED	208	POLE	SITE LIGHTING, MOUNTED 20' AFG.	
VP-A5	BEACON	VP-L-96NB-280-SK-T5W-208-PK2-BZ	LED	208	POLE	SITE LIGHTING, MOUNTED 20' AFG.	
VP-S4	BEACON	VP-S-30NB-90-SK-T4-208-PK2-BZ	LED	208	POLE	SITE LIGHTING, MOUNTED 20' AFG.	

VERIFY ALL FIXTURE HEIGHTS/AIMING CONFIGURATIONS WITH HUBBELL LIGHTING PRIOR TO INSTALLATION.

**SITE LIGHTING PLAN**  
 SCALE: 1"=30'



Contractor:  
**DF Chase, Inc.**  
 3001 Armory Drive  
 Suite 225  
 Nashville, TN 37204



OFFICE RENOVATION & DOCK ADDITION:  
**OLD DOMINION FREIGHT LINE**  
**ODFL PORTLAND, ME**  
 185 RAND ROAD  
 PORTLAND, ME 04102

CONSTRUCTION PERMIT 4/25/2014  
 DRAWINGS FOR PERMIT  
 SITE LIGHTING CHG 5/21/14

Project No. 13061.00  
 The Architect hereby reserves its common law copyright and other property rights in these plans, items and designs which are not to be reproduced, changed or copied in any form or manner whatsoever nor are they to be assigned to any third party without first obtaining the express written permission from the Architect. The drawing is not final or to be used for construction until signed by the Architect.

Sheet Name:  
 SITE LIGHTING PLAN

Sheet Number:

ES1.1