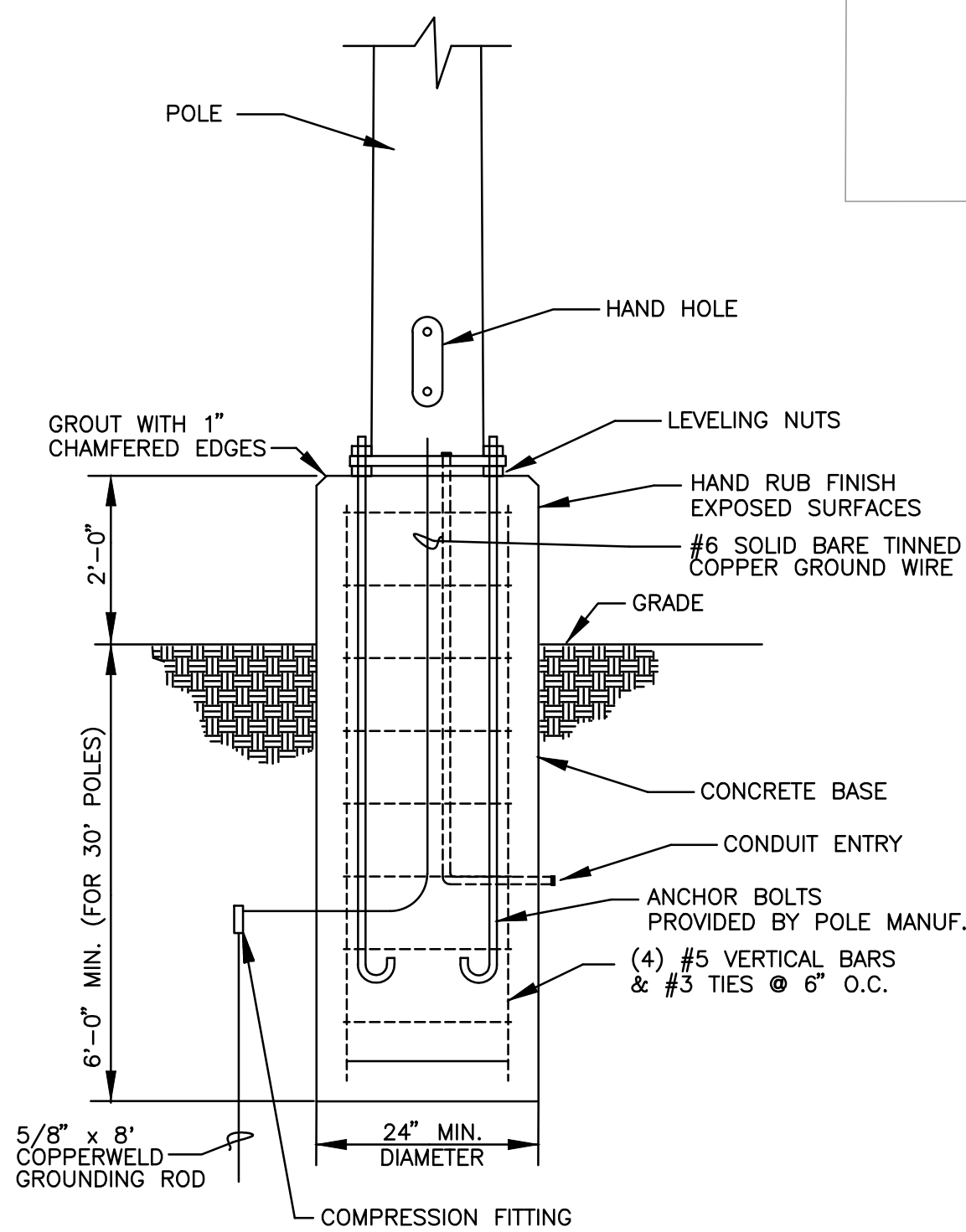
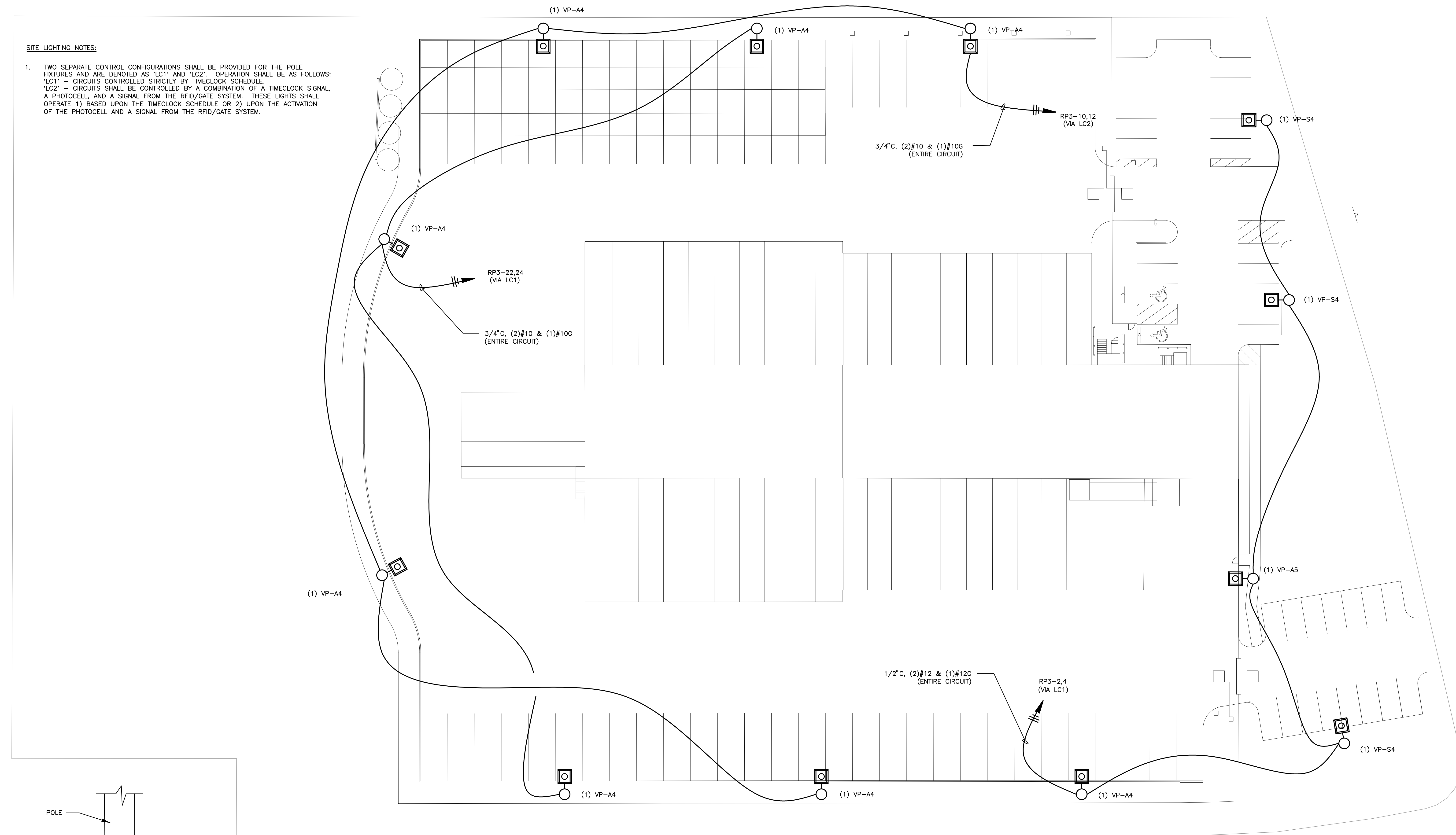


SITE LIGHTING NOTES:

- TWO SEPARATE CONTROL CONFIGURATIONS SHALL BE PROVIDED FOR THE POLE FIXTURES AND ARE DENOTED AS 'LC1' AND 'LC2'. OPERATION SHALL BE AS FOLLOWS:
 'LC1' - CIRCUITS CONTROLLED STRICTLY BY TIMECLOCK SCHEDULE.
 'LC2' - CIRCUITS SHALL BE CONTROLLED BY A COMBINATION OF A TIMECLOCK SIGNAL, A PHOTOCELL, AND A SIGNAL FROM THE RFID/GATE SYSTEM. THESE LIGHTS SHALL OPERATE 1) BASED UPON THE TIMECLOCK SCHEDULE OR 2) UPON THE ACTIVATION OF THE PHOTOCELL AND A SIGNAL FROM THE RFID/GATE SYSTEM.



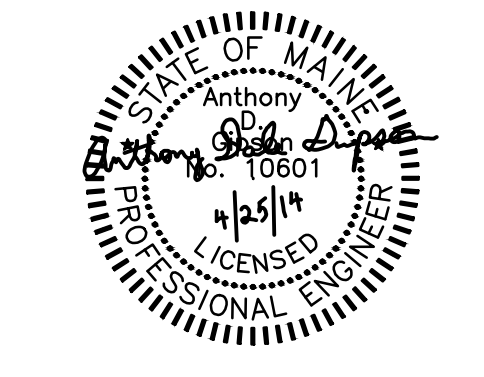
FIXTURE TYPE 'VP-S4', 'VP-A4', & 'VP-A5' POLE BASE DETAIL

NOT TO SCALE

| FIXTURE SCHEDULE | | | | | | |
|------------------|--------------|---------------------------------|-------|---------|----------|------------------------------|
| TYPE | MANUFACTURER | CATALOG # | LAMPS | VOLTAGE | MOUNTING | TYPE/REMARKS |
| VP-A4 | BEACON | VP-L-96NB-280-5K-T4-208-HSS-BZ | LED | 208 | POLE | SITE LIGHTING, WITH 20' POLE |
| VP-A5 | BEACON | VP-L-96NB-280-5K-T5W-208-PK2-BZ | LED | 208 | POLE | SITE LIGHTING, WITH 20' POLE |
| VP-S4 | BEACON | VP-S-30NB-90-5K-T4-208-PK2-BZ | LED | 208 | POLE | SITE LIGHTING, WITH 20' POLE |

VERIFY ALL FIXTURE HEIGHTS/AIMING CONFIGURATIONS WITH HUBBELL LIGHTING PRIOR TO INSTALLATION.

SITE LIGHTING PLAN
SCALE: 1"=20'



Contractor:
DF Chase, Inc.
3001 Armory Drive
Suite 225
Nashville, TN 37204



OFFICE RENOVATION & DOCK ADDITION:
OLD DOMINION FREIGHT LINE
ODFL PORTLAND, ME
185 RAND ROAD
PORTLAND, ME 04102

CONSTRUCTION PERMIT 4/25/2014

Project No. 13061.00
The Architect hereby reserves its common law copyright and other property rights in these plans, items and designs which are not to be reproduced, changed or copied in any form or manner whatsoever nor are they to be assigned in any third party without first obtaining the express written permission from the Architect. The drawing is not final or to be used for construction until signed by the Architect.

Sheet Name:
SITE LIGHTING PLAN

Sheet Number:

ES1.1