

PORTLAND, ME 04102
 CBL 262 B037001
 BK 28506 PG 58

- GRADING AND DRAINAGE NOTES:**
1. THE CONTRACTOR SHALL PHASE GRADING EFFORTS SUCH THAT TOTAL SITE DISTURBANCE IS MINIMIZED. TEMPORARY EROSION CONTROL MEASURES SHALL BE INSTALLED PRIOR TO GRADING EFFORTS OR WITHOUT DELAY UPON THEIR COMPLETION, DEPENDENT UPON THE SITUATION.
 2. ALL FILL SLOPES SHALL BE A MINIMUM OF 2:1 HORIZONTAL TO VERTICAL UNLESS OTHERWISE NOTED OR DIRECTED.
 3. THE LIMITS OF DISTURBANCE SHALL GENERALLY BE THE MINIMAL EXTENT NECESSARY ONLY TO PERFORM THE GRADING EFFORTS SHOWN ON THE DRAWINGS. SPECIAL CARE SHALL BE TAKEN TO AVOID DISTURBANCE OF OBJECTS AND AREAS NOT SPECIFICALLY IDENTIFIED FOR MODIFICATION OR REMOVAL.
 4. ALL DISTURBED AREAS SHALL BE LOAMED AND SEEDED IN ACCORDANCE WITH THE DRAWINGS, UNLESS INTENDED FOR OTHER SURFACE COVER.
 5. STORM DRAINS SHALL BE CONSTRUCTED CONCURRENTLY WITH GRADING EFFORTS TO PROVIDE ADEQUATE CONVEYANCE FOR ANY SITE RUNOFF CONDITIONS.
 6. WHERE FINAL GRADING HAS BEEN COMPLETED, SURFACE RESTORATION FOR DISTURBED AREAS WILL BE COMPLETED AS SOON AS PRACTICABLE. FOR VEGETATIVE AREAS, VEGETATION WILL BE PROGRESSIVELY ESTABLISHED.
 7. UNLESS OTHERWISE NOTED, ALL STORM DRAIN PIPE SHALL BE IN ACCORDANCE WITH MOOT SPECIFICATIONS SECTION 603. PIPE CULVERTS AND STORM DRAINS, LATEST REVISION WITH ACCEPTABLE TYPES OF PIPE ARE AS FOLLOWS:
 SMOOTH BORE POLYETHYLENE PIPE - HDPE N-12 ADS
 8. BENCHMARK INFORMATION: SEE PLAN
 9. THE CONTRACTOR SHALL SUBMIT SHOP DRAWINGS OF ALL DRAINAGE STRUCTURES AND PIPING PRIOR TO ORDERING.
 10. RIM ELEVATIONS OF PROPOSED DRAINAGE STRUCTURES ARE APPROXIMATE. FINAL ELEVATIONS ARE TO BE SET FLUSH AND CONSISTENT WITH THE GRADING PLANS.

STRUCTURE DATA:

- CB#1**
 RIM: 55.23
 INV.IN: 44.01 (FROM CB#2)
 INV.OUT: 43.91 (TO EXISTING DMH)
- CB#2**
 RIM: 53.99
 INV.IN: 46.15 (FROM OCS#1)
 INV.IN: 46.05 (FROM STORMTREATS)
 INV.OUT: 46.05 (TO CB#1)
- CB#3**
 RIM: 54.20
 INV.IN: 46.76 (FROM CB#3)
 INV.OUT: 46.66 (TO DMH#1)
- CB#4**
 RIM: 55.22
 INV.IN: 49.11 (FROM CB#5)
 INV.OUT: 49.01 (TO CB#3)
- CB#5**
 RIM: 55.56
 INV.OUT: 50.14 (TO CB#4)
- OCS#1**
 RIM: 55.50
 TOP OF WEIR: 48.98
 INV.IN: 46.66 (FROM CHAMBERS)
 INV.OUT: 46.56 (TO STORMTREATS)
 INV.OUT: 46.56 (TO CB#2)
- DMH#1**
 RIM: 57.56
 INV.IN: 46.76 (FROM CB#3)
 INV.OUT: 46.66 (TO CHAMBERS)

STORMDRAIN PIPE DATA:

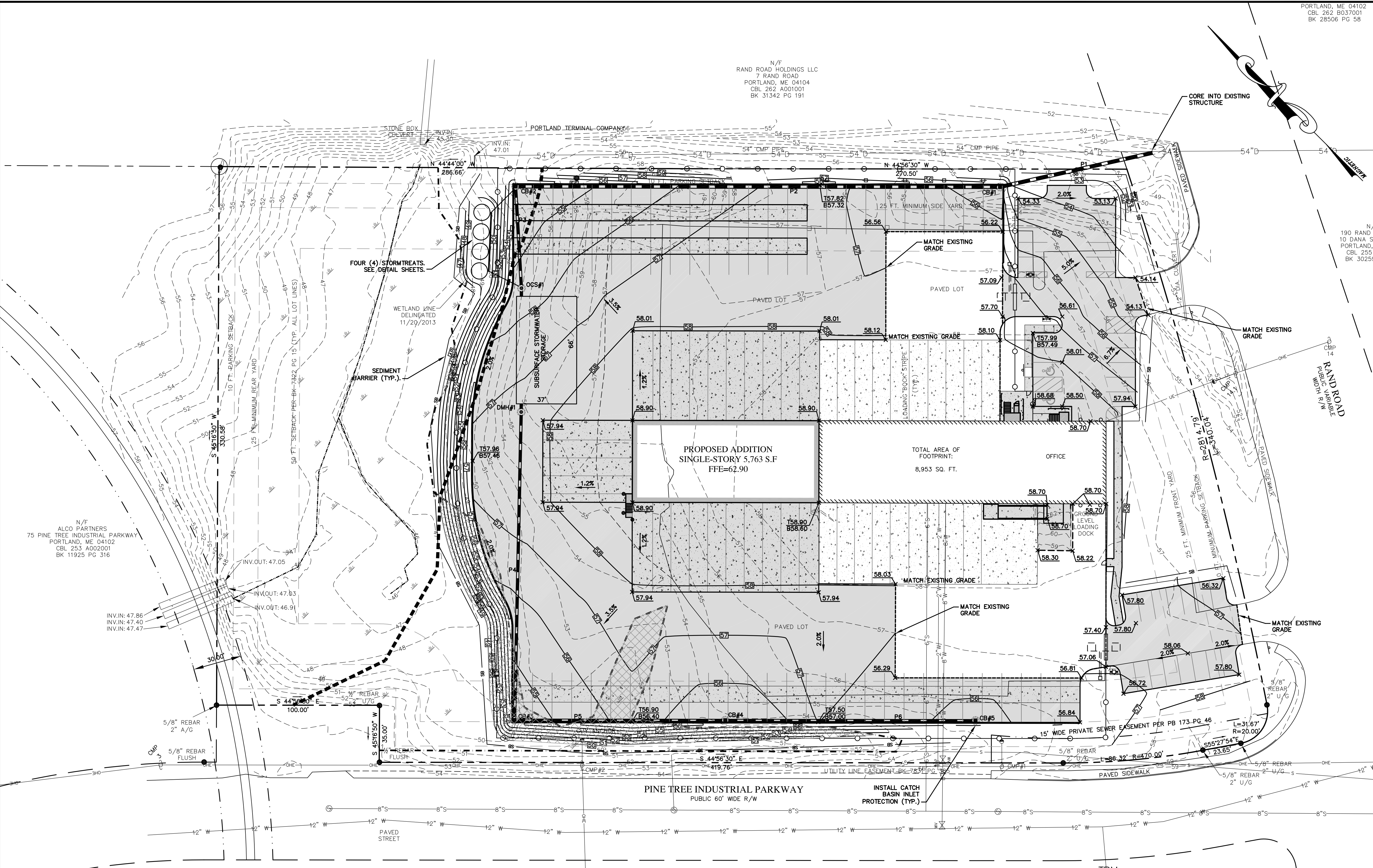
- P1: 24" HDPE L=96' S=0.0090
 P2: 24" HDPE L=291' S=0.0090
 P3: 18" HDPE L=58' S=0.0090
 P4: 18" HDPE L=182' S=0.0090
 P5: 15" HDPE L=125' S=0.0090
 P6: 15" HDPE L=147' S=0.0090

N/F
 RAND ROAD HOLDINGS LLC
 7 RAND ROAD
 PORTLAND, ME 04104
 CBL 262 A001001
 BK 31342 PG 191

N/F
 ALCO PARTNERS
 75 PINE TREE INDUSTRIAL PARKWAY
 PORTLAND, ME 04102
 CBL 253 A002001
 BK 11925 PG 316

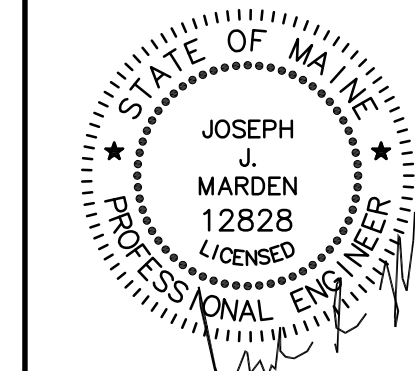
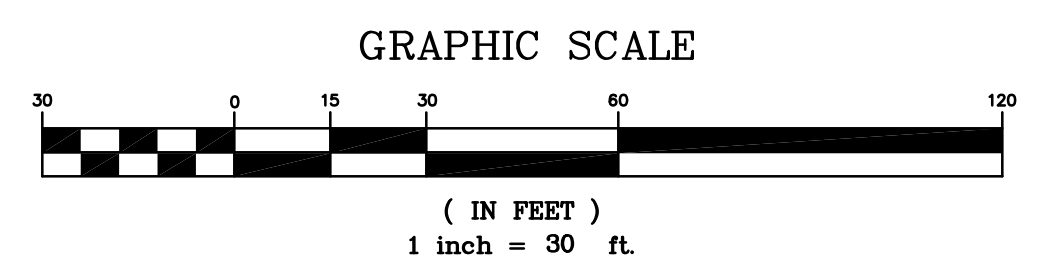
N/F
 80 PINE TREE IP LLC
 10 DANA ST STE 400
 PORTLAND, ME 04101
 CBL 254 A002001
 BK 31209 PG 49

N/F
 NORTHWOODS OF PORTLAND LLC
 PO BOX 1400
 KIRKWOOD VOORHEES, NJ 08043
 CBL 254 A008001
 BK 31324 PG 6



TEMPORARY BENCHMARK
 BLACK BOLT ON HYDRANT
 ELEVATION: 58.84

CALL DIG SAFE UTILITY LOCATION
1-888-344-7233
 STATE LAW REQUIRES ADVANCE NOTICE OF AT LEAST 3 BUSINESS DAYS BEFORE YOU DIG, GRADE OR EXCAVATE FOR THE MARKING OF UNDERGROUND UTILITIES



TITLE: GRADING, DRAINAGE & EROSION CONTROL PLAN		
PROJECT: PROPOSED BUILDING EXPANSION 185 RAND ROAD, PORTLAND, ME 04102		
PREPARED FOR: OLD DOMINION FREIGHT LINES, INC. 500 OLD DOMINION WAY, THOMASVILLE, NC 27360		
FIELD WK: JIM/MC	SCALE: 1"=40'	SHEET: C4
DRN BY: RPL	JOB #: 2454	
CHD BY: CYN	MAP/LOT:	
DATE: 02/26/14	FILE: 2454-SITE	