



Contractor:  
**DF Chase, Inc.**  
 3001 Armory Drive  
 Suite 225  
 Nashville, TN 37204



Phase II Terminal Addition for:  
**Old Dominion Freight Line**  
**ODFL PORTLAND, ME**  
 185 RAND ROAD,  
 PORTLAND, ME 04102

PERMIT ISSUE 04/16/2014

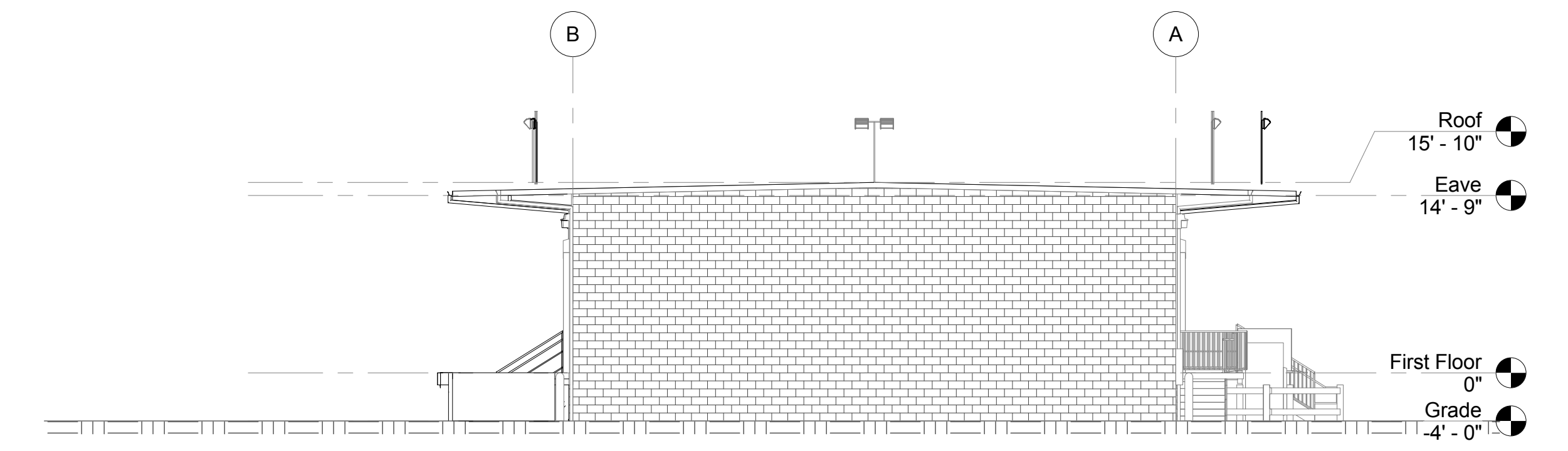
Project No. 13061.00

The Architect hereby reserves its common law copyright and other property rights in these plans, ideas and designs which are not to be reproduced, changed or copied in any form or manner whatsoever, nor are they to be assigned to any third party without first obtaining the express written permission from the Architect. The drawing is not final or to be used for construction until signed by the Architect.

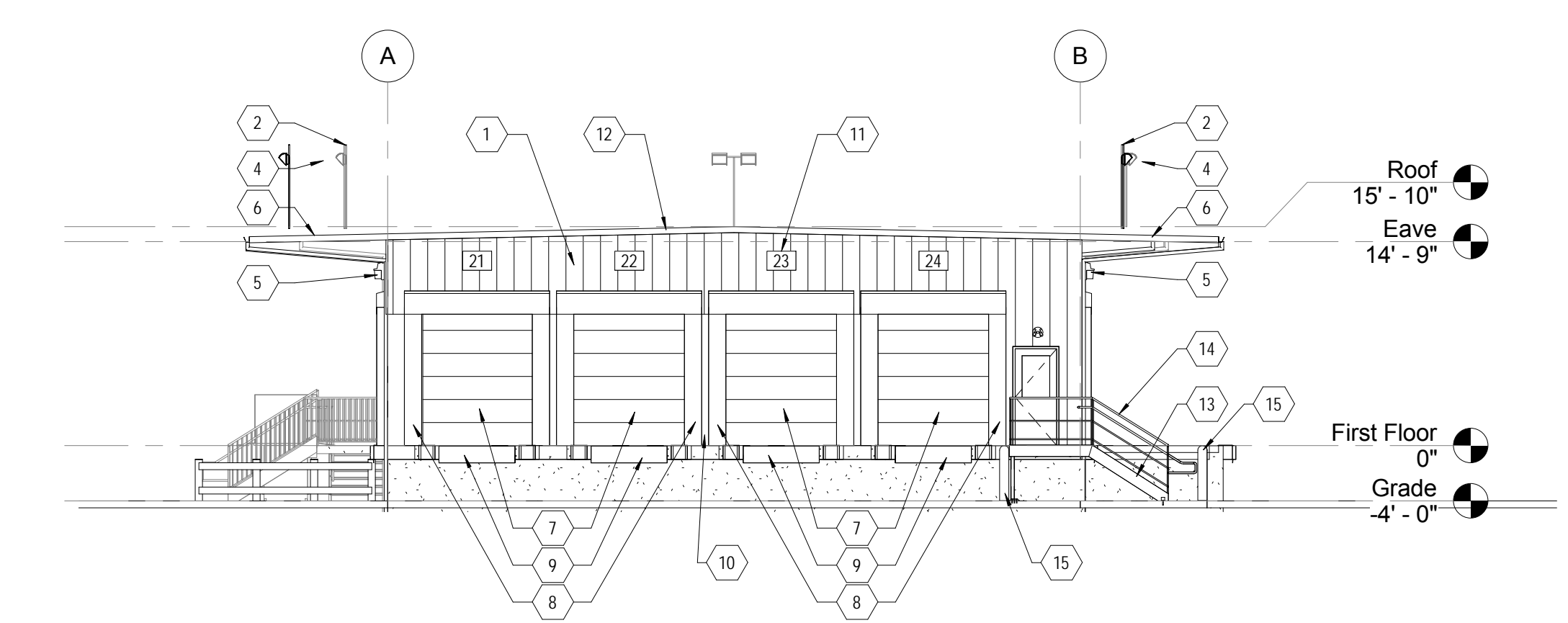
Sheet Name:  
 ADDITION ELEVATIONS

Sheet Number:

**A3.2**

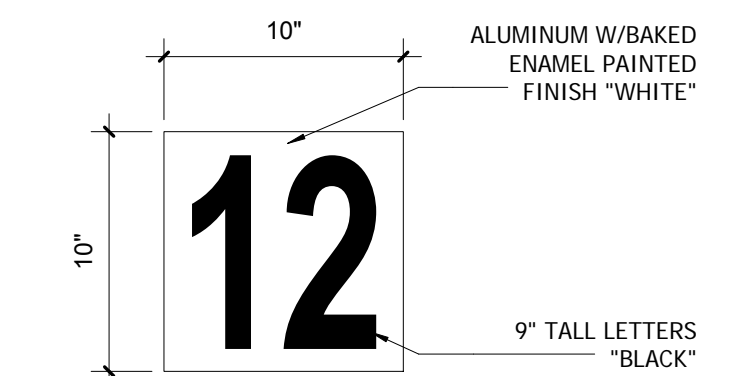


4 EAST ELEVATION - PHASE II  
1" = 10'-0"

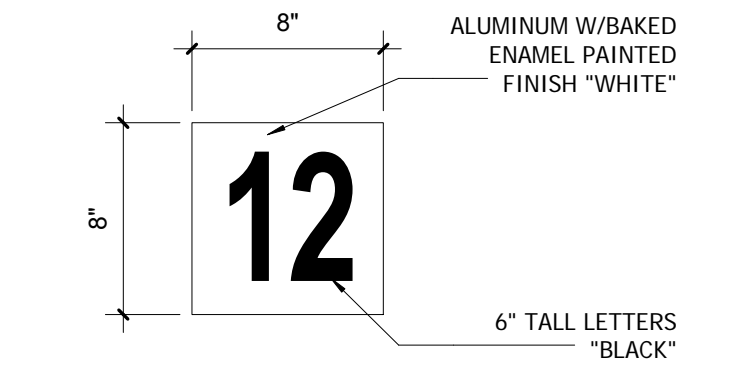


3 WEST ELEVATION - PHASE II  
1" = 10'-0"

TERMINALS OF 99 DOORS OR LESS



EXTERIOR SIGN

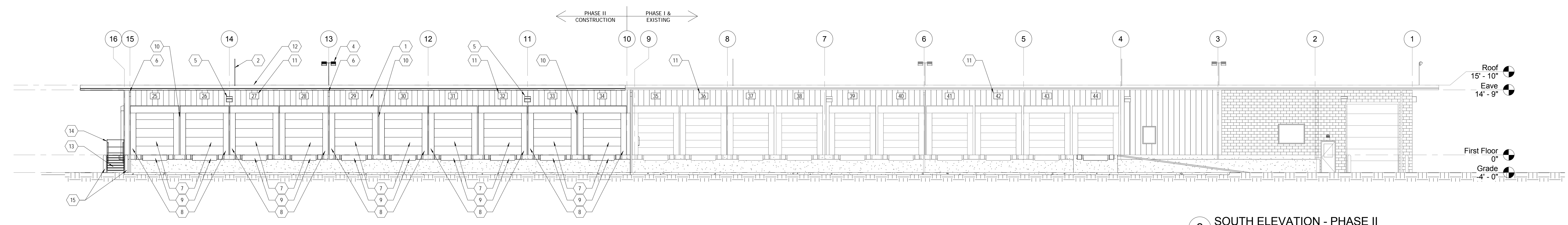


INTERIOR SIGN

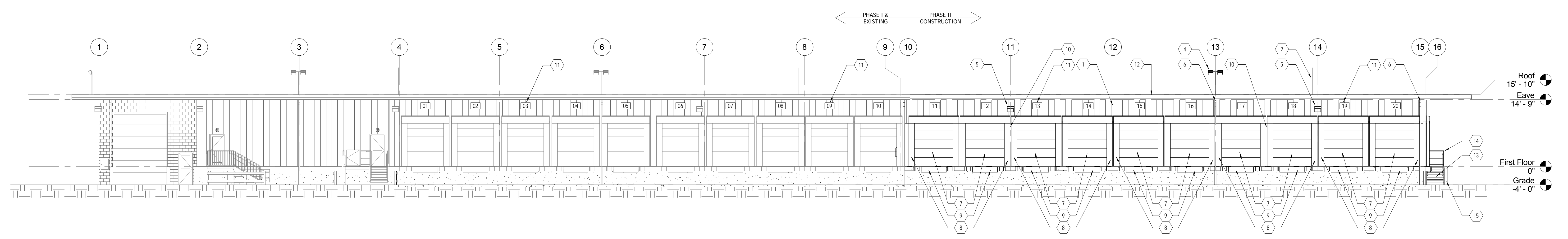
NUMBERS ARE A 1-1/2" WIDE STROKE

5 DOOR NUMBER DETAIL  
1 1/2" = 1'-0"

EXTERIOR KEYNOTES	
1	PRE-FINISHED METAL SIDING, MATCH EXISTING PANELS IN COLOR AND PROFILE
2	DISPATCH ANTENNA, SEE ROOF PLAN. SEE DETAIL 2/A2.5
3	NOT USED
4	NEW POLE MOUNTED LIGHT FIXTURE, SEE ROOF PLAN. SEE DETAIL 3/A2.5
5	EXTERIOR WALL-PACK LIGHT FIXTURE (SEE ELECTRICAL DRAWINGS FOR TYPE AND LOCATION)
6	CONTINUOUS PREFINISHED METAL GUTTER AND DOWNSPOUTS
7	JANUS SERIES 2500 OVERHEAD COILING DOOR, 8'-6" x 10'-0" AT REAR ELEVATION, 9'-0" x 10'-0" AT SIDE ELEVATIONS.
8	RITE-HITE (FROMMELT) FDS SERIES DOCK SEAL
9	EDGE OF DOCK LEVELERS WITH BUMPERS - DLM EOD 3011W/B 72" NEVER LIFT
10	SUPERIAMB BETWEEN EACH DOOR ON ADDITION. SEE DETAIL 7/A8.2
11	DOCK NUMBER SIGN, SEE DETAIL 5/A3.2
12	NEW STANDING SEAM GALVALUME METAL ROOF WITH VINYL BACKED INSULATION. SLOPE 1/4" PER FOOT, MINIMUM.
13	GALVANIZED STEEL STAIR
14	GALVANIZED STEEL HANDRAILS
15	STAIR BOLLARDS



2 SOUTH ELEVATION - PHASE II  
1" = 10'-0"



1 NORTH ELEVATION - PHASE II  
1" = 10'-0"