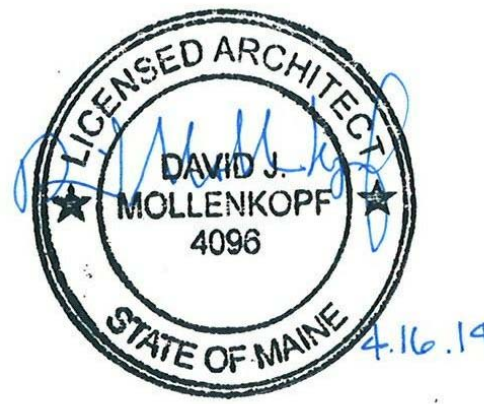




209 10th Ave S • Suite 414
Nashville, Tennessee 37203
v. 615.996.9146 • f. 615.733.0052
www.themdjlc.com



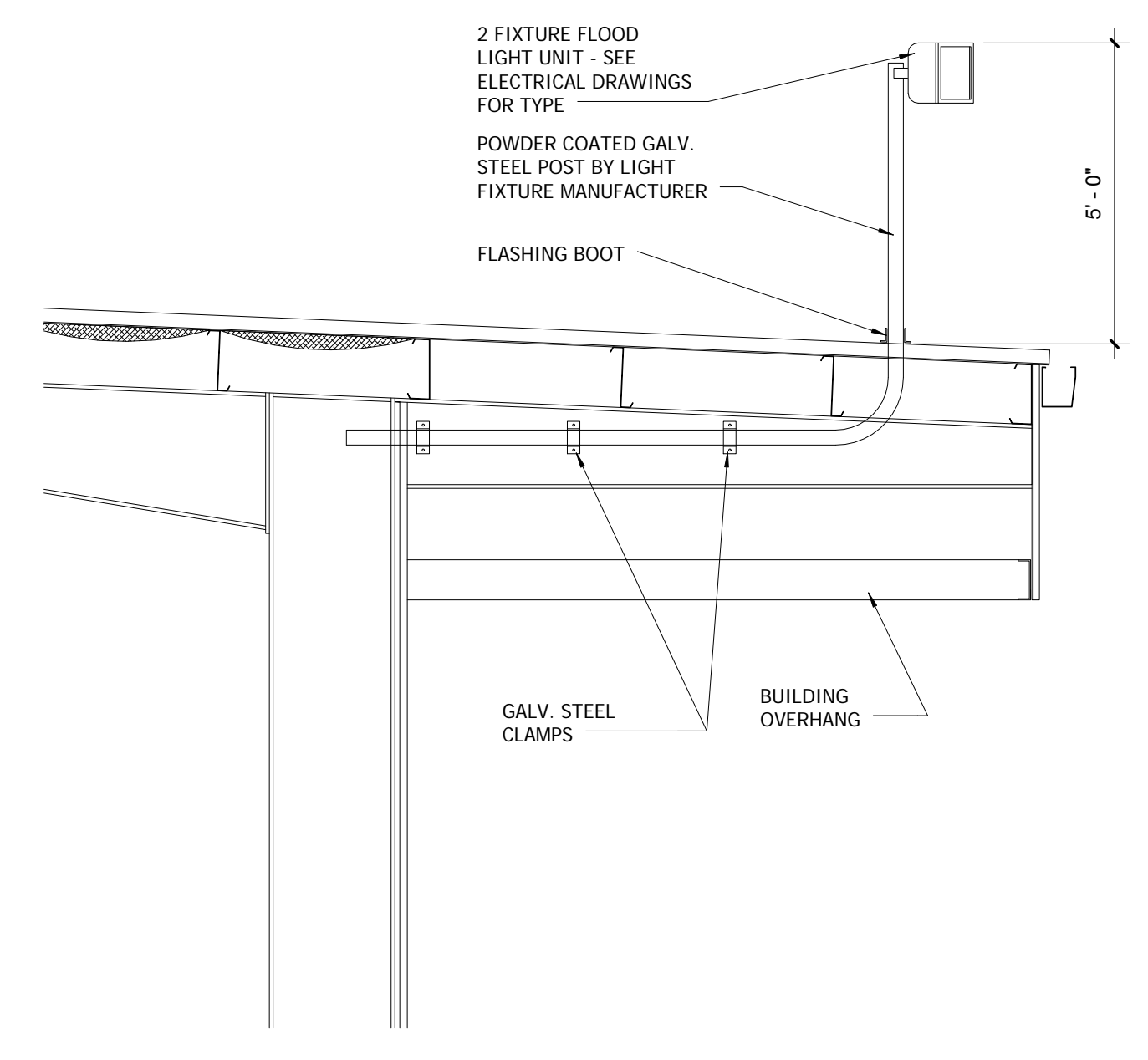
NO LICENSE 21A01754900 - EXP 7/31/2015
Architect: David J. Mollenkopf



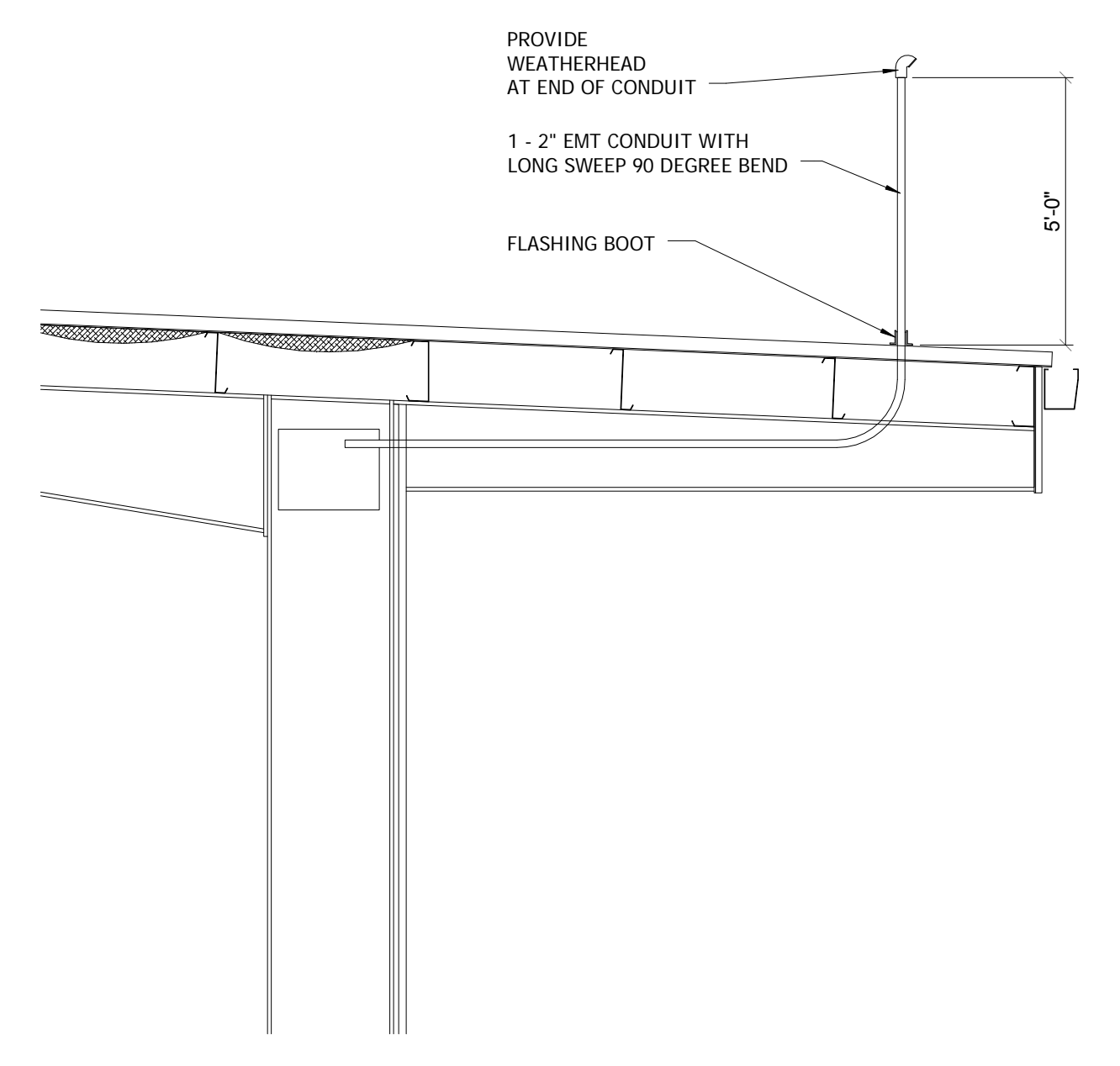
Contractor:
DF Chase, Inc.
3001 Armory Drive
Suite 225
Nashville, TN 37204



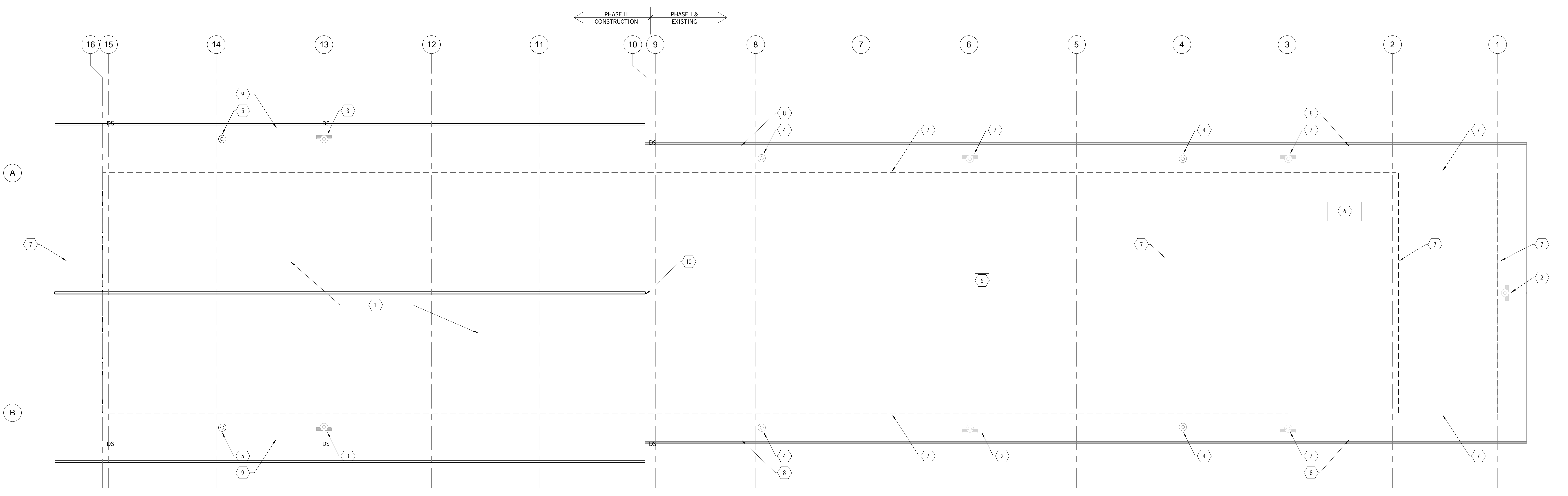
- ROOF KEYNOTES**
- 1 NEW STANDING SEAM GALVALUME METAL ROOF WITH VINYL BACKED INSULATION. PROVIDED BY PEMB SUPPLIER, ERECTED BY PEMB ERECTOR. PROVIDE CHICKEN WIRE BETWEEN PURLINS AND INSULATION.
 - 2 EXISTING POLE MOUNTED LIGHT FIXTURE.
 - 3 NEW POLE-MOUNTED LIGHT FIXTURE, TYP. SEE DETAIL 3/A2.5
 - 4 DISPATCH ANTENNA INSTALLED IN PREVIOUS PHASE
 - 5 NEW DISPATCH ANTENNA - SEE DETAIL 2/A2.5
 - 6 LOCATION OF EXISTING ROOFTOP MECHANICAL UNITS. FIELD VERIFY.
 - 7 LINE OF WALLS BELOW
 - 8 EXISTING CONTINUOUS PREFINISHED MTL GUTTER AND DOWNSPOUTS
 - 9 NEW CONTINUOUS PREFINISHED MTL GUTTER AND DOWNSPOUTS, TYP.
 - 10 NEW ROOF TO TIE INTO EXISTING ROOF



3 FLOODLIGHT DETAIL AT ADDITION
3/8" = 1'-0"



2 ANTENNA DETAIL AT ADDITION
3/8" = 1'-0"



1 ROOF PLAN - PHASE II
1" = 10'-0"

Phase II Terminal Addition for:
Old Dominion Freight Line
ODFL PORTLAND, ME
185 RAND ROAD,
PORTLAND, ME 04102

PERMIT ISSUE 04/16/2014

Project No. 13061.00

The Architect hereby reserves its common law copyright and other property rights in these plans, ideas, and designs which are not to be reproduced, changed or copied in any form or manner whatsoever, nor are they to be assigned to any third party without first obtaining the express written permission from the Architect. This drawing is not final or to be used for construction until signed by the Architect.

Sheet Name:
ADDITION ROOF PLAN

Sheet Number:

A2.5