

2 DEMOLITION PLAN - PHASE II
1" = 10'-0"

GENERAL DEMOLITION NOTES

Refer to General Notes sheet A0.2 for general conditions and requirements for construction.

The contractor is to perform the work outlined in these documents in all areas of construction unless noted otherwise.

Where new openings are planned, remove existing partition as indicated and prepare opening for installation of door / frame or casad opening as scheduled.

Where new finishes are scheduled, remove all existing finishes (including but not limited to - ACT and grid, doors and door frames, flooring, etc.) patch and repair wall / floor to accept new finish as scheduled. Install new finish per manufacturer's specifications.

Remove existing floor covering throughout. Refer to new finish plan and prep floor for new finish.

Remove all non-compliant ADA door hardware and prep doors for installation of ADA compliant Door hardware.

Remove all existing dock door numbers.

Demolition is to include removal of all walls, toilet partitions, toilet accessories, casework, doors & frames, ceilings, shelving, etc. Existing structure elements to remain as-is.

DEMOLITION KEYNOTES

- 1 SLAB TO BE CUT BACK 2'-0" FROM REAR EDGE OF DOCK
- 2 REMOVE EXISTING BOLLARD
- 3 REMOVE EXISTING 8'-6" X 9'-0" OVERHEAD DOOR
- 4 REMOVE EXISTING DOCK SEAL
- 5 REMOVE EXISTING DOCK LEVELER
- 6 REMOVE EXISTING STAIR
- 7 REMOVE EXISTING DOOR & FRAME
- 8 REMOVE EXISTING WALL

GENERAL NOTES

REFER TO GENERAL NOTES SHEET A0.2 FOR GENERAL CONDITIONS AND REQUIREMENTS FOR CONSTRUCTION.

THE CONTRACTOR IS TO PERFORM THE WORK OUTLINED IN THESE DOCUMENTS IN ALL AREAS OF CONSTRUCTION UNLESS NOTED OTHERWISE.

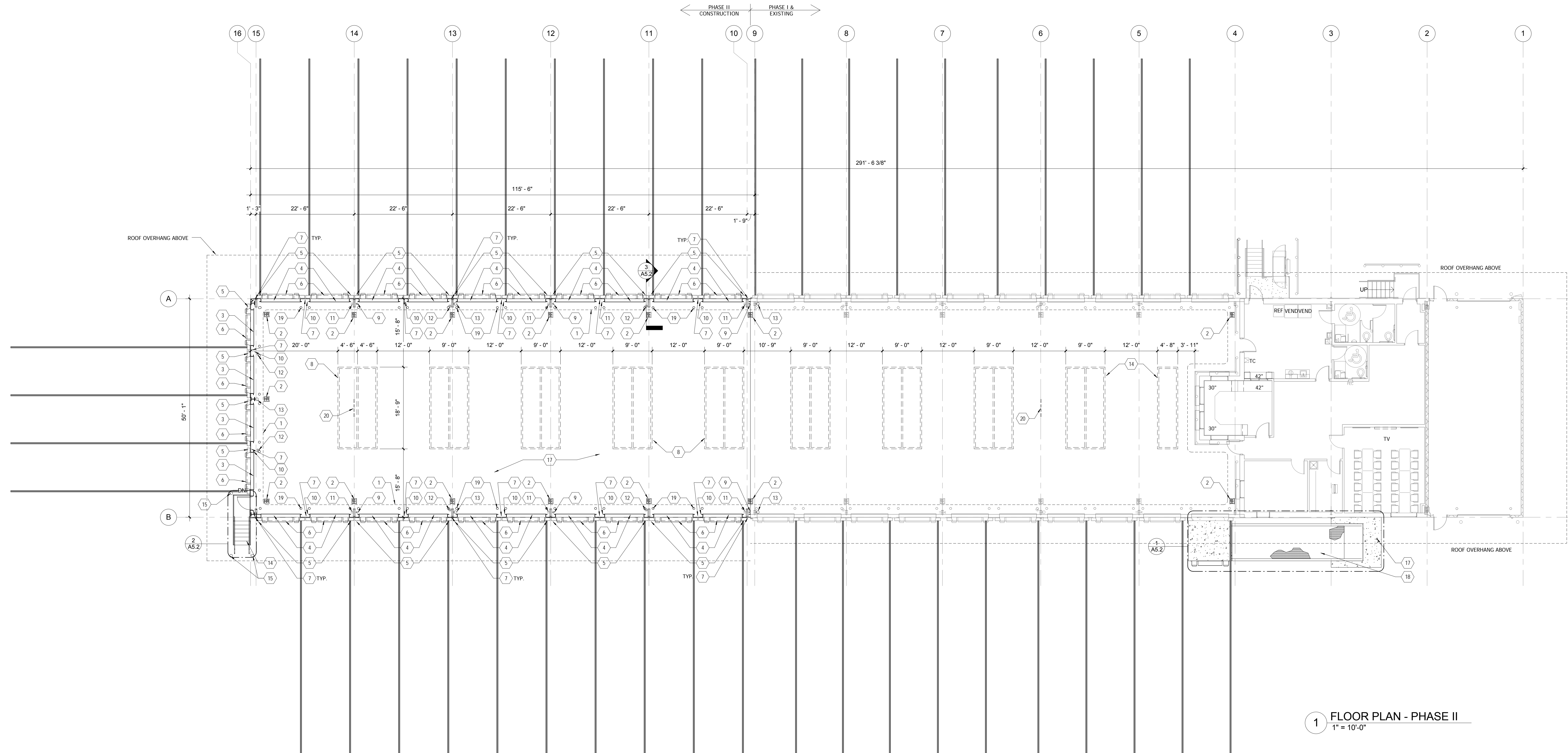
ALL DIMENSIONS ARE FROM FACE OF FINISH TO FACE OF FINISH, UNLESS NOTED OTHERWISE.

CONTRACTOR SHALL COORDINATE STUD SIZE AND GAUGE NECESSARY FOR HEIGHT OF WALL, AS WELL AS FOR STRUCTURAL, MECHANICAL, PLUMBING OR ELECTRICAL CLEARANCES PRIOR TO BEGINNING CONSTRUCTION. ANY DISCREPANCIES WITH THE LAYOUT AS DIMENSIONED SHALL BE COORDINATED IMMEDIATELY WITH THE ARCHITECT.

CONTRACTOR SHALL REINFORCE METAL STUD CONSTRUCTION WITH FIRE-RESISTANT WOOD BLOCKING AT ALL LOCATIONS WHERE WALL CABINETS, SHELVING, GRAB BARS, ACCESSORIES, ETC. ARE TO BE INSTALLED.

CONSTRUCTION KEYNOTES

- 1 COMPRESSED AIR PIPING LINE EXTENDED INTO DOCK ADDITION - OWNER WILL PROVIDE AIR LOOP COMPONENTS.
- 2 HOSE REELS WITH COMPRESSED AIR PIPING ABOVE. REFER TO ENGINEERING DRAWINGS FOR FURTHER INFORMATION. COORDINATE WITH OWNER FOR QUANTITY AND EXACT LOCATIONS OF HOSE REELS.
- 3 JANUS SERIES 2500, 8'-6" x 10'-0" OVERHEAD COILING DOOR
- 4 JANUS SERIES 2500, 9'-0" x 10'-0" OVERHEAD COILING DOOR
- 5 RITE-HITE (FROMMELT) FDS SERIES DOCK SEAL
- 6 EDGE OF DOCK LEVELERS WITH BUMPERS - DLM EDD 3011WB 72" NEVER LEFT SUPERJAMB BETWEEN EACH DOOR ON ADDITION. SEE DETAIL 7/A8.2
- 7 4" WIDE FLOORS STRIPING. PREP SLAB PRIOR TO GRINDING AND PAINTING. ALL STRIPING AND PREP WORK BY OWNER'S FAB-SETAIL.
- 8 BROOM/SHOVEL HOOKS, TYP. (LEHIGH/RAWFORD FOOD HANGER, AUBUCHON # 607549). SEE DETAIL 9/A8.2. PLACE 1 HOOK FOR EVERY 4 DOORS. COORDINATE LOCATION WITH OWNER.
- 9 MANIFEST CLIPBOARD CLIPS (CAROLINA INDUSTRIAL SALES, INC. MODEL CIS-715). TYPICAL BETWEEN EACH DOCK DOOR - SEE DETAIL 8/A8.2. CONTRACTOR PROVIDED. CONTRACTOR INSTALLED.
- 10 STRAP HOOKS, TYP. 10/A8.2. FIELD COORDINATE EXACT LOCATIONS WITH OWNER.
- 11 RAIN CURTAIN HOLDER. SEE DTL. 4/A8.2. TYPICAL EVERY FOUR (4) DOCK DOORS. FIELD COORDINATE EXACT LOCATIONS WITH OWNER.
- 12 BUILDING STANDARD SURFACE-MOUNTED FIRE EXTINGUISHER. SEE LIFE SAFETY PLAN FOR LOCATIONS.
- 13 GALVANIZED STEEL STAIRS, LANDING AND HANDRAILS/GUARDRAIL.
- 14 STAIR BOLLARDS
- 15 PORTABLE DOCK RAMP RELOCATED TO NEW DOOR
- 16 NEW CONCRETE SLAB / PAVING
- 17 EXISTING PORTABLE RAMP, MOVED TO NEW LOCATION.
- 18 6" DIA. STEEL BOLLARDS SET PRIOR TO CONCRETE SLAB POUR. SHOP PRIME AND COVER WITH 2 COATS OF PAINT. COLOR TO BE SAFETY YELLOW. BOLLARDS NEAR FIRE EXTINGUISHERS SHALL BE PAINTED FIRE-ENGINE RED. (SEE DETAIL 6/A8.2 FOR PLACEMENT) TWO BOLLARDS PER EVERY DOCK DOOR.
- 19 ACCESS POINT MOUNTED TO BUILDING STRUCTURE ABOVE



1 FLOOR PLAN - PHASE II
1" = 10'-0"



Phase II Terminal Addition for:
Old Dominion Freight Line
ODFL PORTLAND, ME
185 RAND ROAD,
PORTLAND, ME 04102

PERMIT ISSUE 04/16/2014

Project No. 13061.00

The Architect hereby reserves its common law copyright and other property rights in these plans, ideas and designs which are not to be reproduced, changed or copied in any form or manner, whatsoever, nor are they to be assigned to any third party without first obtaining the express written permission from the Architect. This drawing is not final or to be used for construction until signed by the Architect.

Sheet Name:
ADDITION DEMOLITION & FLOOR PLAN

Sheet Number:

A2.4