

CODE ANALYSIS

- Maine Uniform Building and Energy Code
- 2009 edition of the International Building Code
 - 2009 edition of the International Existing Building Code
 - 2009 edition of the International Residential Code
 - 2009 edition of the International Energy Conservation Code
- ASHRAE Standards 62.1, 62.2, and 90.1
 2009 NFPA 1 - Fire Code
 2009 NFPA 54 - Natural Fuel and Gas Code
 2009 NFPA 101 - Life Safety Code
 2009 International Plumbing Code
 2007 NEC National Electric Code
 2010 ADAAG Accessibility Code

CODE ANALYSIS

- Construction Type:** Type II B
- Occupancy Type:** Office/Shop – Business, non-separated use per 508.3 and Table 508.4
 Dock – S-1 Storage
- Allowable Area:** Business – 23,000 SF / Table 503
 Dock – 17,500 SF / Per Table 503
- Actual Area:** Office/Shop – 1,096 + 2,335 = 3,431 SF
 Dock – 5,406 SF
- Total Area:** 8,837 SF
- Floor Area per Occupant:** Per Table 1004.1.1 – 100 SF for Business Occupancy
 500 SF for Warehouse Occupancy
- Occupant Load:** Office – Business Occupancy – 3,431 / 100 SF per person = 34.3 Occupants
 Dock – Storage Occupancy – 5,406 / 500 SF per person = 10.81 Occupants
- Exits Required:** Office – Business – per Table 1015.1 – 49 occupants or less require 1 Exit
 Dock – Storage S-1 – Under 29 Occupants require 1 exit
- Exits Provided:** Office – 2 Shop - 2
 Dock – 2
- Exit Units Provided:** Office – 33" clear width / .2 (per section 1005.1) = 165 occupants x 2 exits = 330 occupants
 Shop – 33" clear width / .2 (per section 1005.1) = 165 occupants x 2 exits = 330 occupants
 Dock – 33" clear width / .2 (per section 1005.1) = 165 occupants x 2 exits = 330 occupants
- Separation Requirements:** Per Table 508.4 – No Separation Requirement
- We are providing Separation to accommodate a future dock addition of 5,735 SF
- Separation Proposed:** Per Section 707 – Fire Barriers per Table 707.3.9 - 3 Hr. separation required. Proposing to use UL Assembly U-419
- Travel Distance:** Per Table 1016.1 – 200' for a building without sprinkler system
- Fire Door and Fire Shutter Requirements:** 3 hr. per Table 715.4
 Doors – Quantity 2 (3 Hr. door, frames and hardware required.)
 Fire Shutters - Quantity 5 (3 Hr. fire shutters on fusible link)

OCCUPANT LOADS - TERMINAL BUILDING

Automatic Fire Sprinkler:	Existing: No / Proposed: No
Occupant Load:	Shop 1,096/500 = 3 occ Dock 5,406/300 = 19 occ Office 2,335/100 = 24 occ Total Occupant Load 46 occ

Required Egress Width: 46 x 0.2" = 10"
 Provided Egress Width: 128"
 Max Travel Distance Allowed: 200'-0"

LIFE SAFETY LEGEND

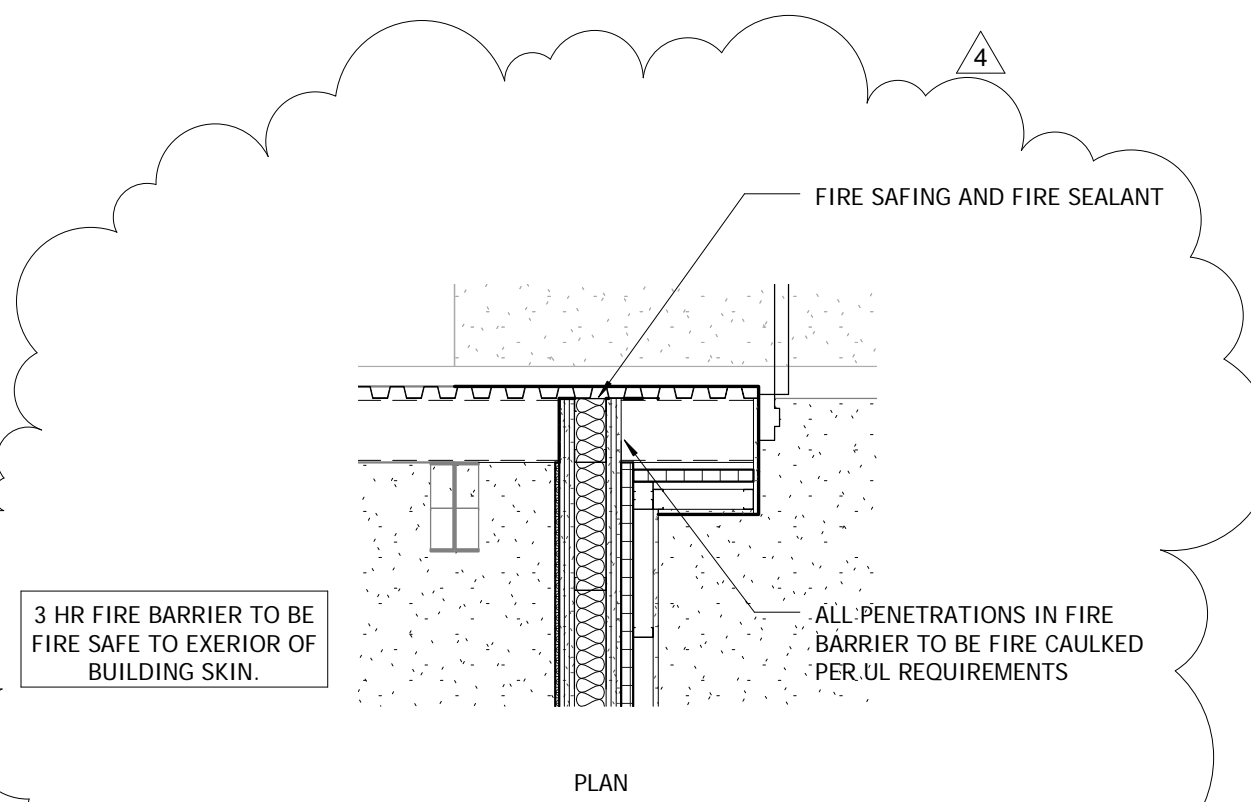
- ⊗ Exit Sign
- 100'-0" Maximum Travel Distance
- ↔ Point of Egress
- * Maximum Exit Capacity (Number of People)
- ☺ Fire Extinguisher (Wall Mount)
- ☺ Fire Extinguisher (Recessed Wall Cabinet)
- ☑ Emergency Overhead Lighting
- ☑ Emergency Outdoor Lighting

GENERAL NOTE FOR ALL WALL TYPES:

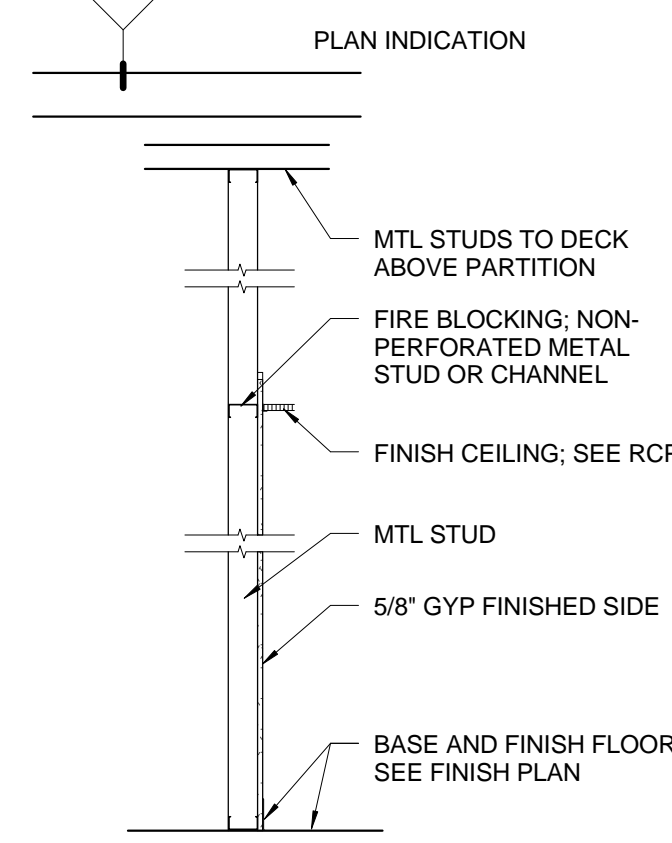
PROVIDE CEMENT BOARD IN LIEU OF GYPSUM BOARD WHERE TILE IS SCHEDULED EXCEPT FOR 3 HR. WALL IN CHECK-IN / BREAKROOM #107.

MIN. 20 GAUGE METAL STUDS, UNLESS NOTED OTHERWISE, ONE LAYER 5/8" GYP BD EACH SIDE, EXTEND GYP BD TO A MINIMUM OF 4" ABOVE CEILING.

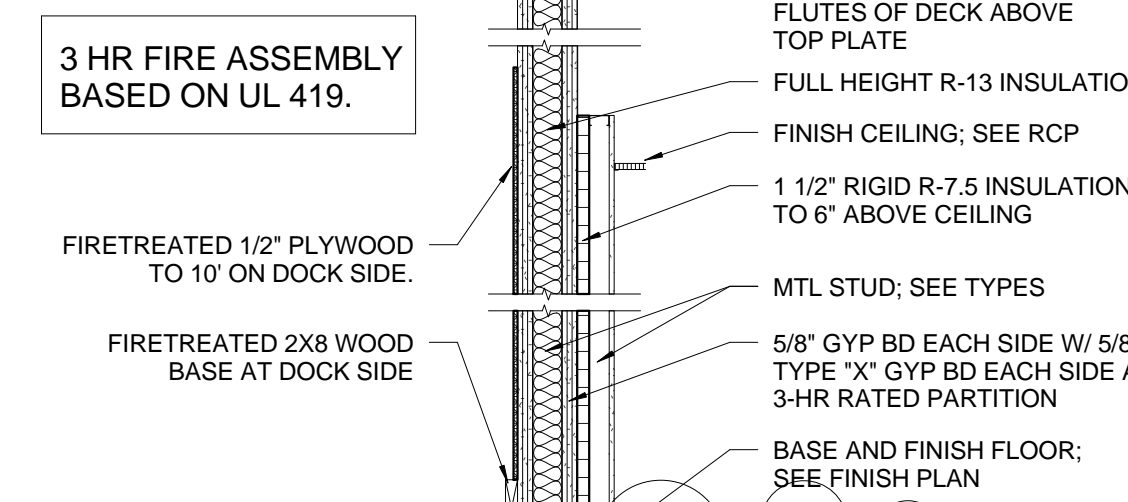
TYPES
 F - 3 5/8" MTL STUDS @ 16" O.C.



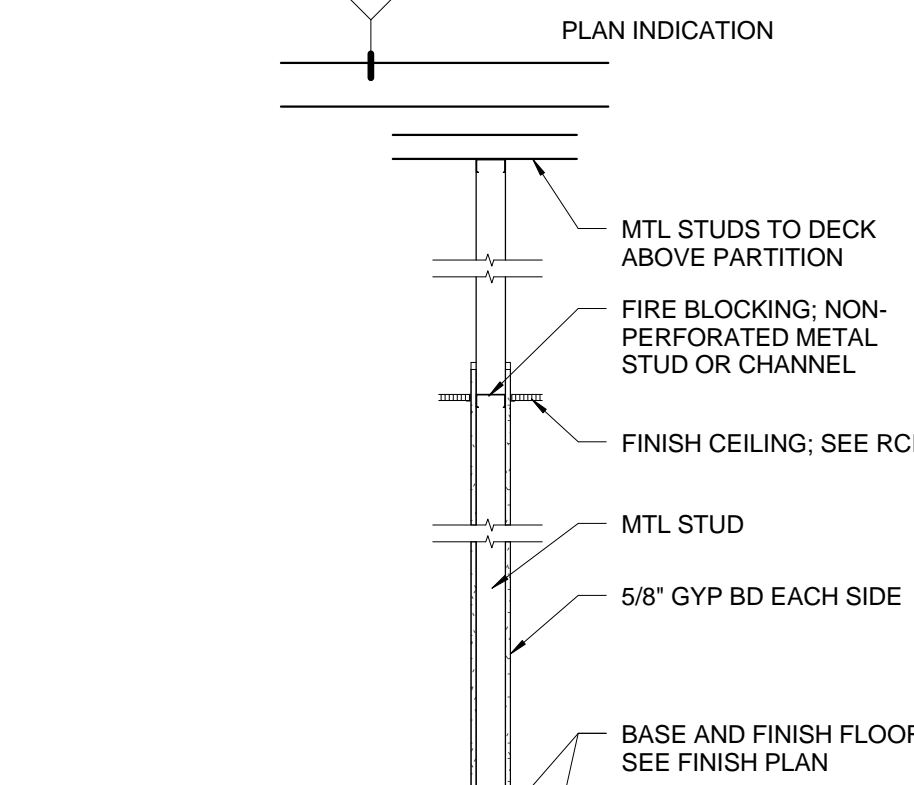
3 FIRE BARRIER PRIORITY DETAIL
 1/2" = 1'-0"



F PARTITION TYPE F
 1/2" = 1'-0"



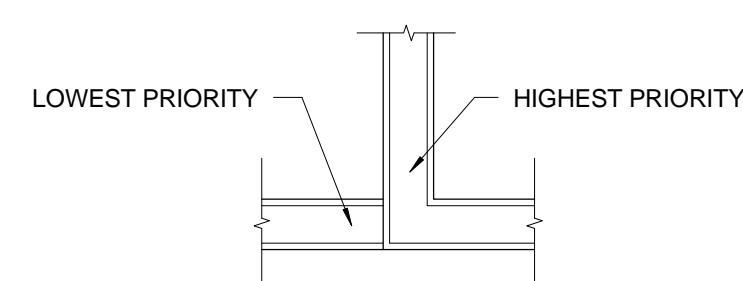
C UL 419 - 3 HR FIRE BARRIER
 1/2" = 1'-0"



A UNRATED PARTITION TO ABOVE CEILING
 1/2" = 1'-0"

WALL PRIORITY LEGEND

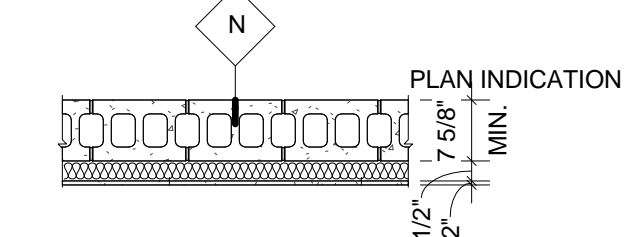
3 HR FIRE AND SMOKE WALL	PRIORITY 1 (HIGHEST)
3 HR FIRE WALL	PRIORITY 2
2 HR FIRE AND SMOKE WALL	PRIORITY 3
2 HR FIRE WALL	PRIORITY 4
1 HR FIRE AND SMOKE WALL	PRIORITY 5
1 HR FIRE WALL	PRIORITY 6
NON-RATED WALL	PRIORITY 7 (LOWEST)



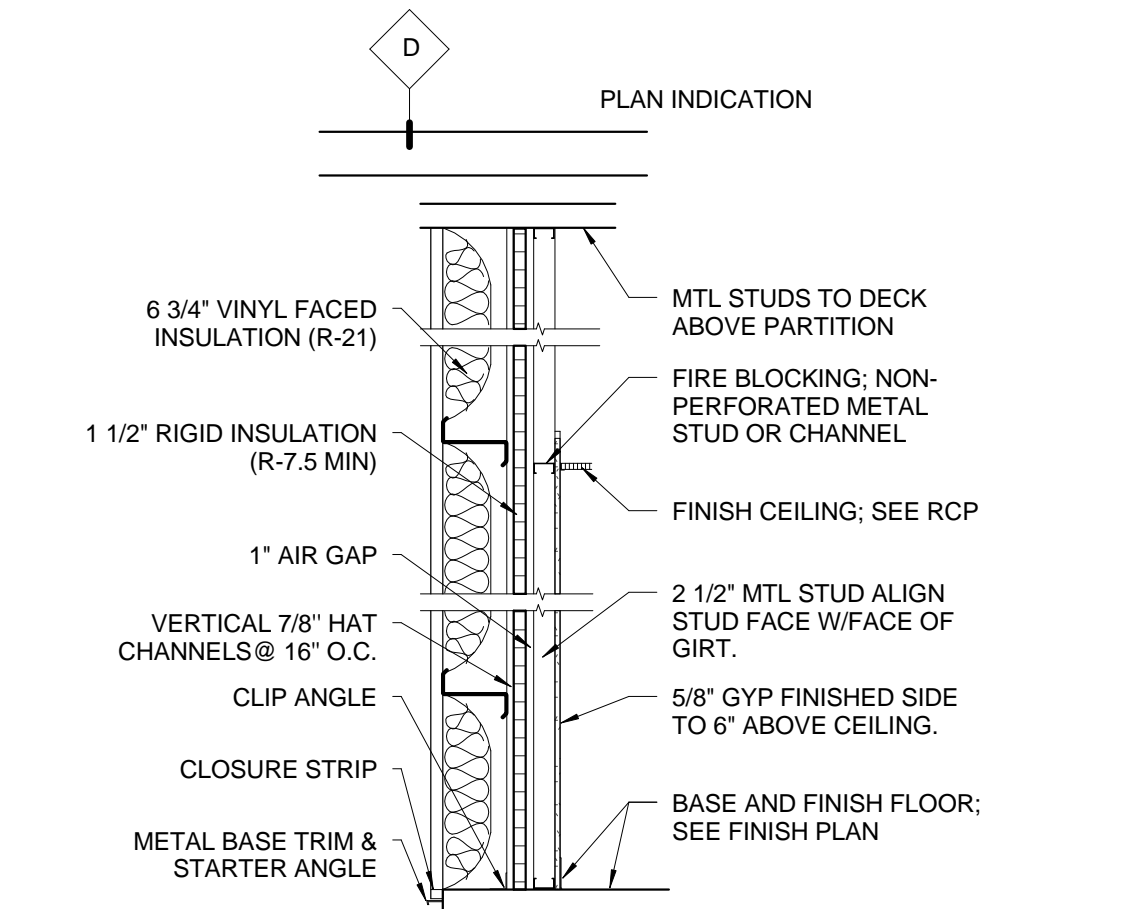
2 PRIORITY LEGEND
 1/2" = 1'-0"

TYPES
 N1 - EXISTING 7 5/8" CONC. MASONRY, VARIOUS DESIGNS, TO 8" MIN. ABOVE CLG. BRACED TO DECK ABOVE AS INDICATED ON DRAWINGS. FURRED OUT ON ONE SIDE WITH 2 1/2" MIN. 20 GA METAL STUDS, WITH 2" BATT INSULATION AND 5/8" GYP BOARD AS INDICATED. (NOT RATED)

NOTE: PROVIDE CERAMIC TILE WHERE SCHEDULED



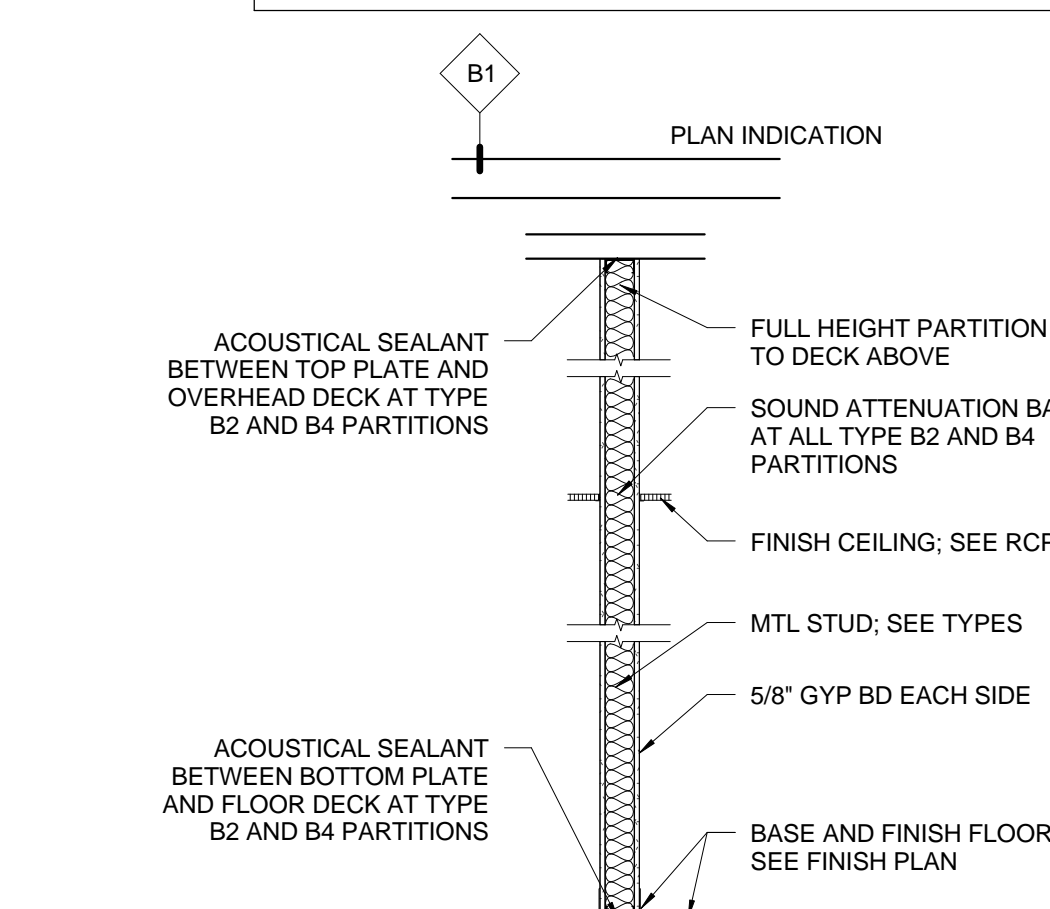
N CMU WALL
 1/2" = 1'-0"



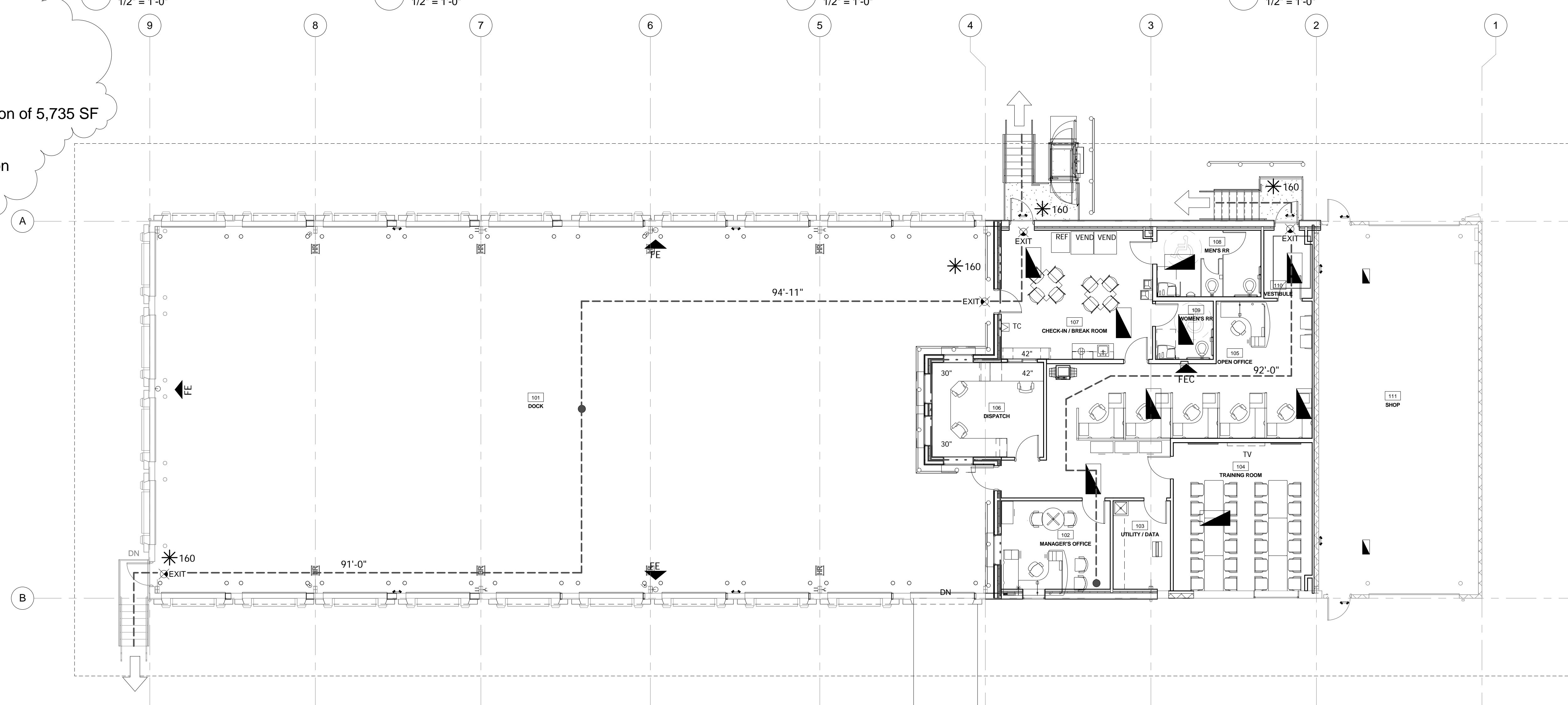
D PARTITION TYPE D
 1/2" = 1'-0"

MIN. 20 GAUGE METAL STUDS, UNLESS NOTED OTHERWISE, ONE LAYER 5/8" GYP BD EACH SIDE. SEE FLOOR PLAN FOR LOCATIONS WHEN INDICATED AS SOUND WALL. EXTEND PARTITIONS TO DECK AND SEAL WITH ACOUSTICAL SEALANT. SEAL PENETRATIONS WITH ACOUSTICAL SEALANT.

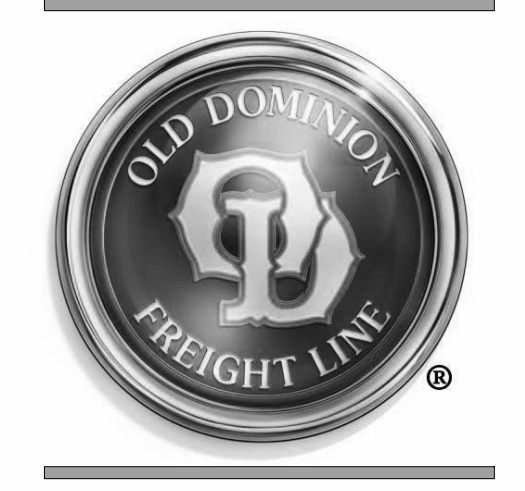
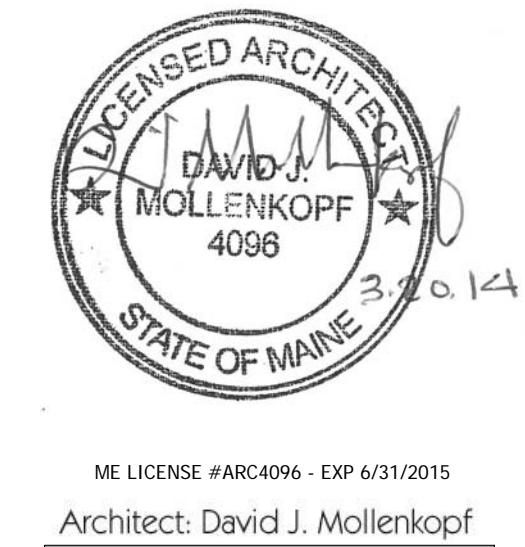
TYPES
 B1 - 3 5/8" MTL STUDS @ 16" O.C. NO SOUND ATTENUATION
 B2 - 3 5/8" MTL STUDS @ 16" O.C. W/ MIN. STC 45 SOUND RATING
 B3 - 6" MTL STUDS @ 16" O.C. NO SOUND ATTENUATION
 B4 - 6" MTL STUDS @ 16" O.C. W/ MIN. STC 45 SOUND RATING



B UNRATED PARTITION TO DECK
 1/2" = 1'-0"



1 LIFE SAFETY PLAN
 1/8" = 1'-0"



Terminal Renovation for:
Old Dominion Freight Line
ODFL PORTLAND, ME
 185 RAND ROAD,
 PORTLAND, ME 04102

PERMIT ISSUE 02/14/2014
 REV. 4 - REVISIONS 03/20/2014

Project No. 13061.00
 Sheet Name: LIFE SAFETY / PARTITIONS
 Sheet Number:

A0.4