



Contractor:  
**DF Chase, Inc.**  
3001 Armory Drive  
Suite 225  
Nashville, TN 37204



Terminal Renovation for:  
**Old Dominion Freight Line**  
**ODFL PORTLAND, ME**  
185 RAND ROAD,  
PORTLAND, ME 04102

PERMIT ISSUE 02/14/2014

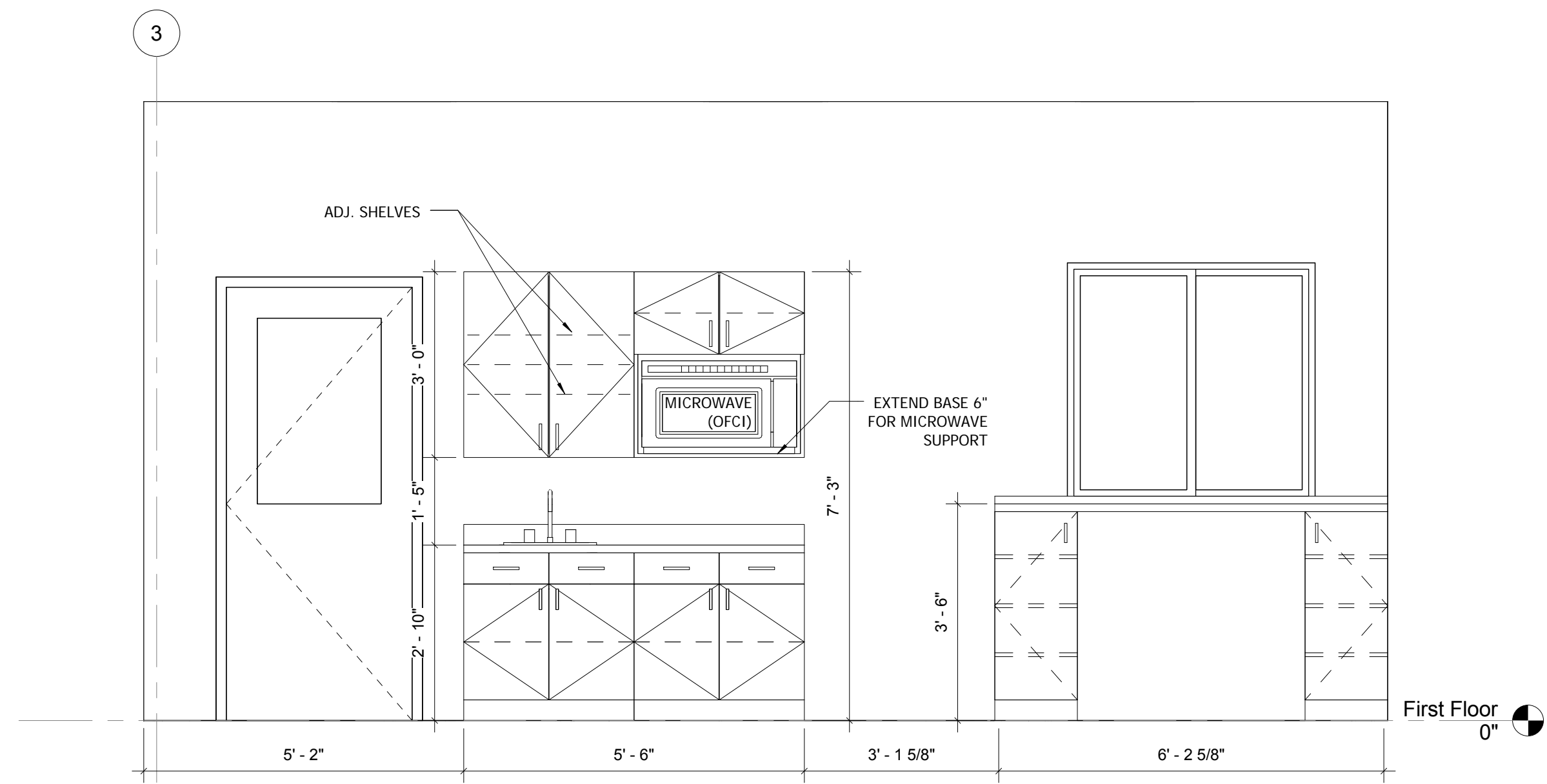
Project No. 13061.00

The Architect hereby reserves its common law copyright and other property rights in these plans, ideas, and designs which are not to be reproduced, changed or copied in any form or manner whatsoever, nor are they to be assigned to any third party without first obtaining the express written permission from the Architect. This drawing is not final or to be used for construction until signed by the Architect.

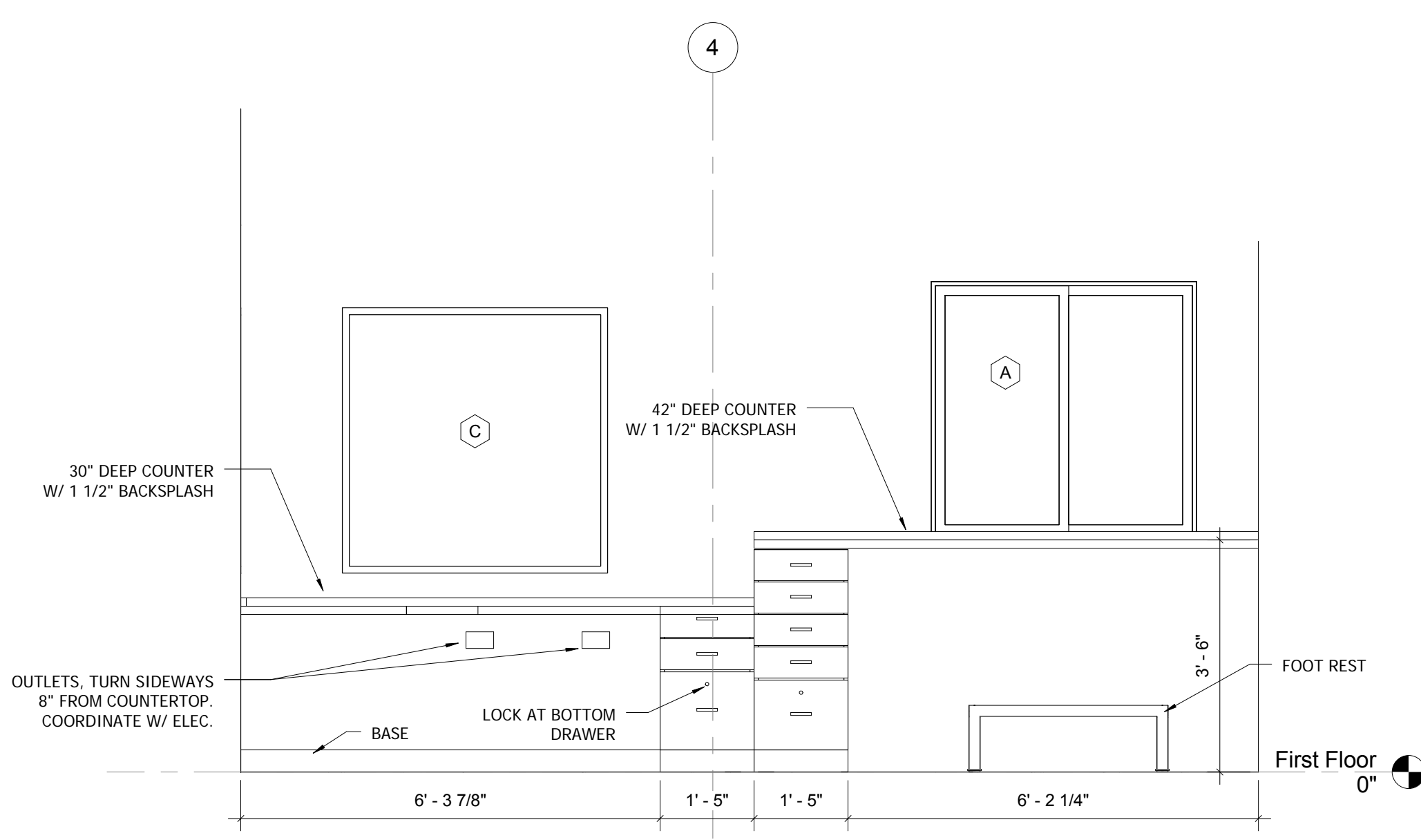
Sheet Name:  
INTERIOR ELEVATIONS &  
CASEWORK

Sheet Number:

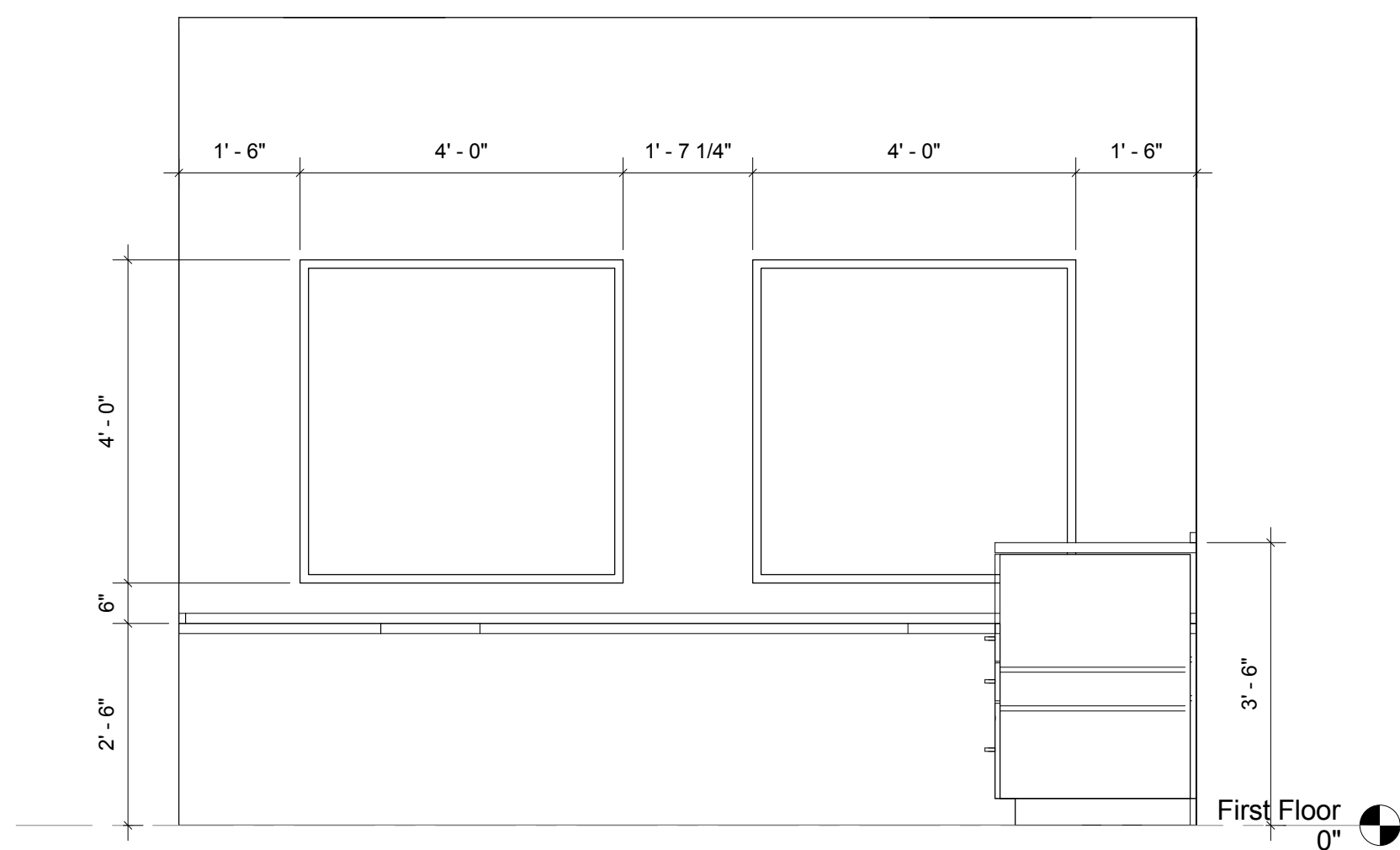
**A7.1**



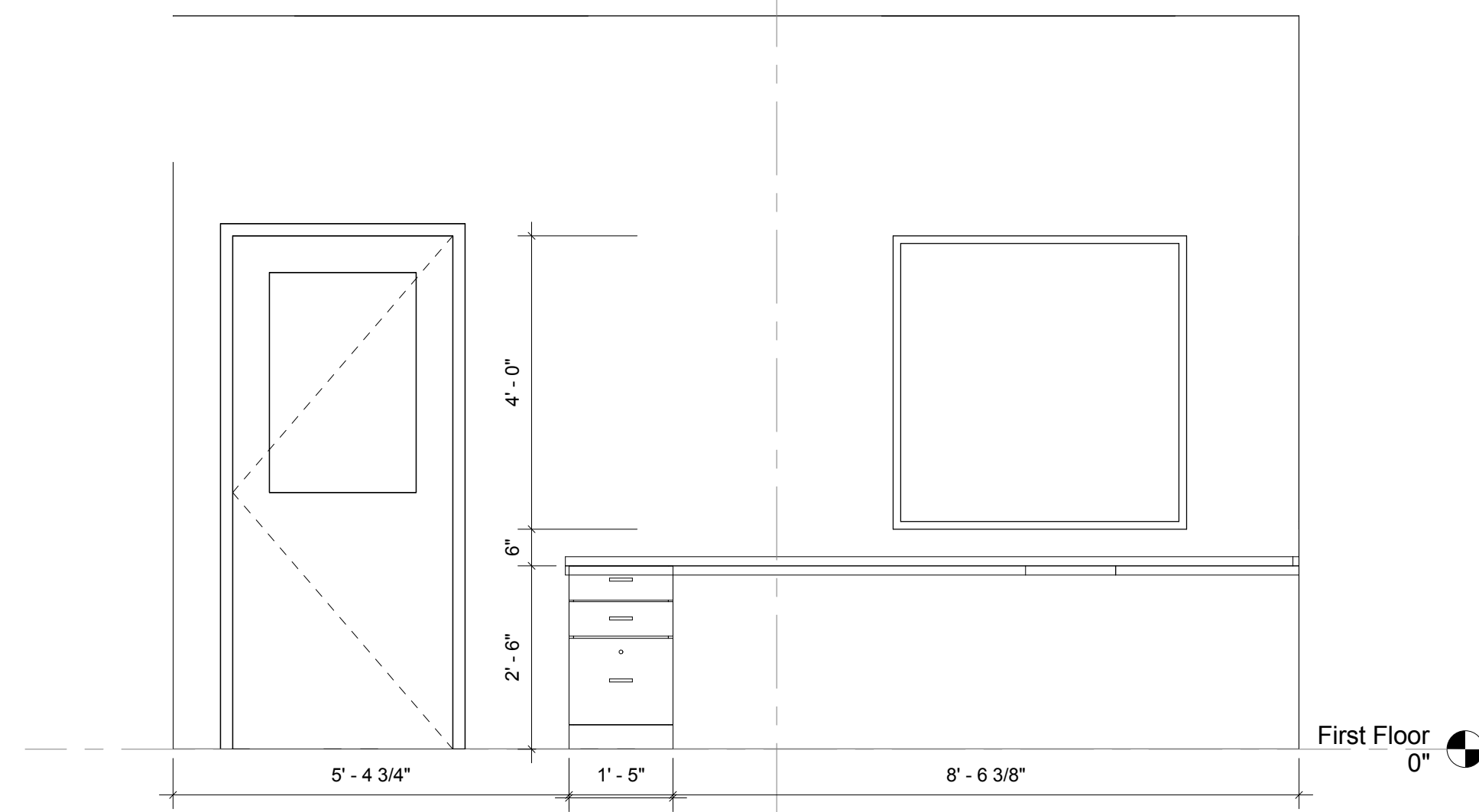
11 BREAKROOM ELEVATION  
1/2" = 1'-0"



10 DISPATCH ELEVATION  
1/2" = 1'-0"



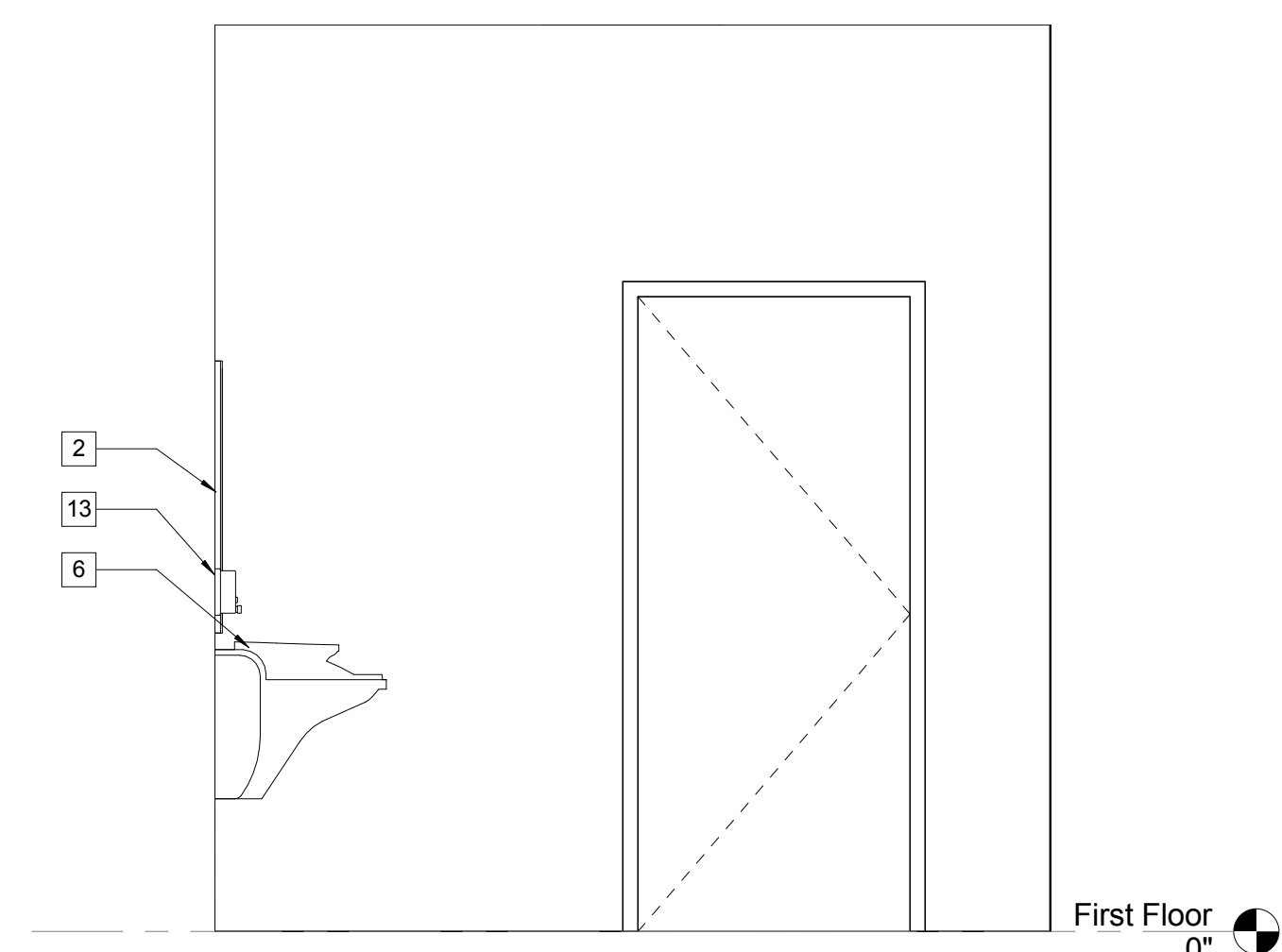
9 DISPATCH ELEVATION  
1/2" = 1'-0"



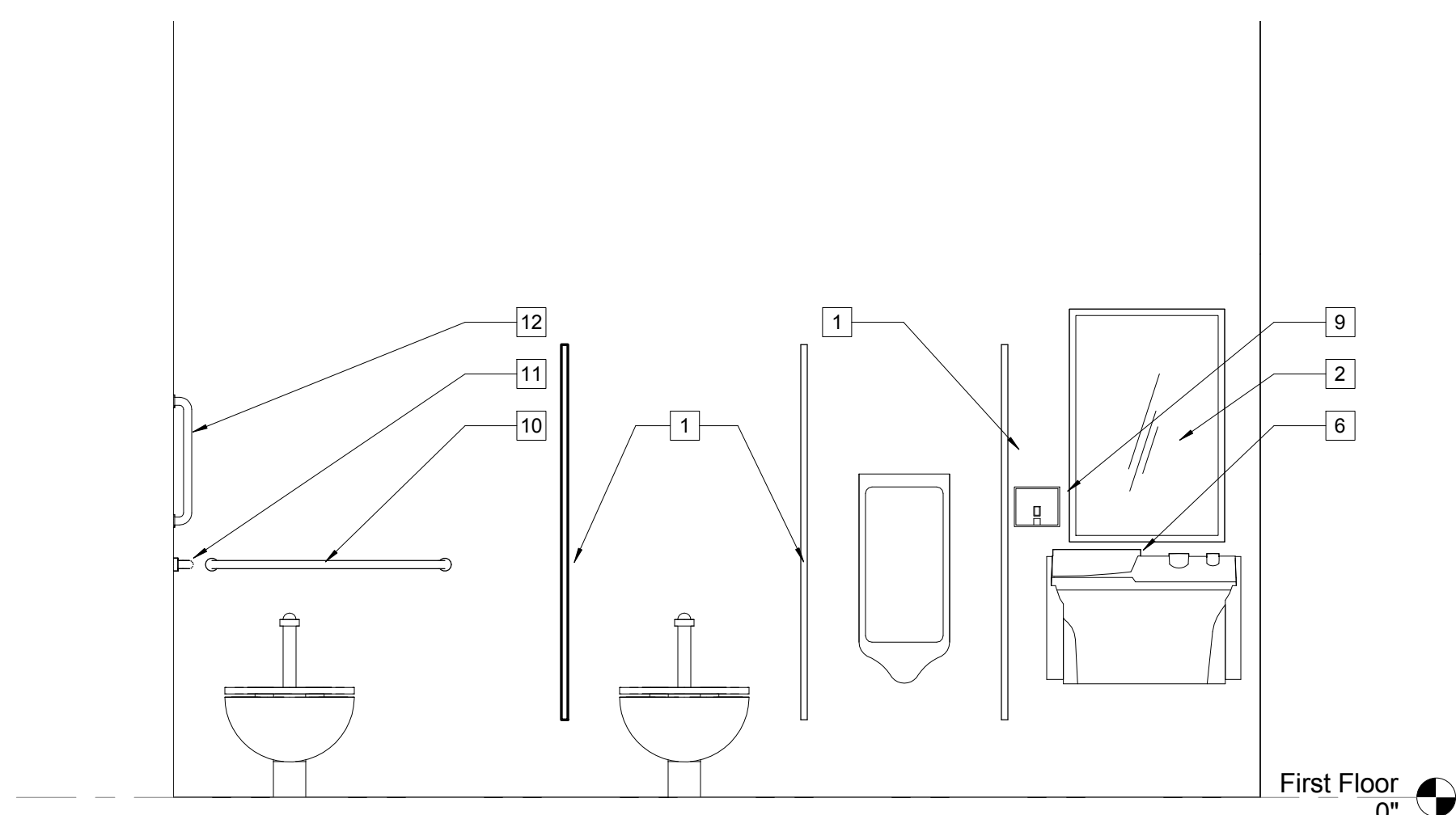
8 DISPATCH ELEVATION  
1/2" = 1'-0"

TOILET ACCESSORY LEGEND

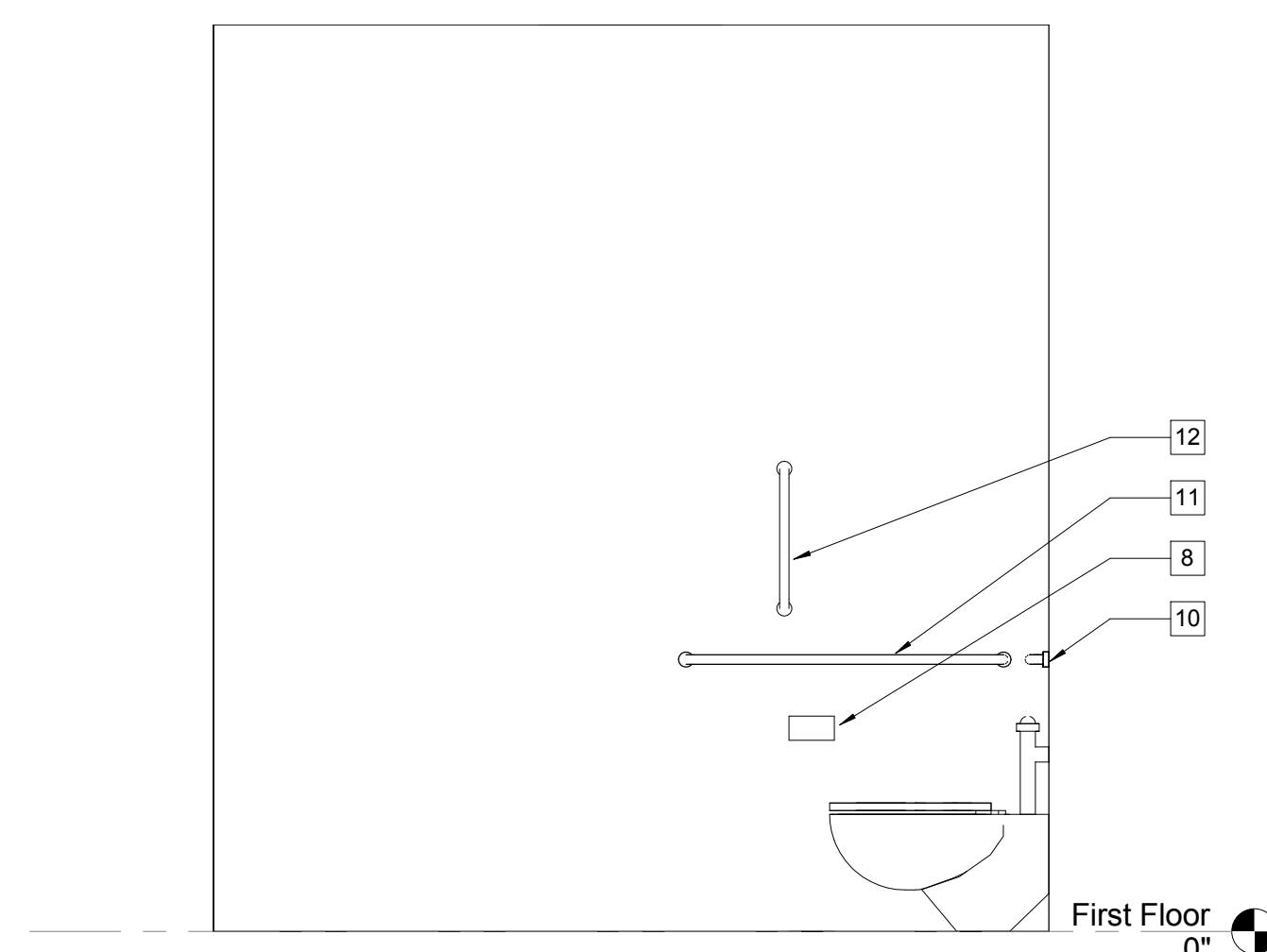
- | ITEM | DESCRIPTION   |
|------|---|
| 1    | SOLID PLASTIC TOILET PARTITION (FLOOR MOUNTED, OVERHEAD BRACED) |
| 2    | MIRROR 24" x 36"  |
| 3    | RECESSED HAND DRYER (OFC1)                                      |
| 4    | FLOOR DRAIN   |
| 5    | COAT HOOK   |
| 6    | BRADLEY ADVOCATE - AV30   |
| 7    | NOT USED  |
| 8    | TOILET PAPER DISPENSER (OFC1)                                   |
| 9    | SOAP DISPENSER (OFC1)   |
| 10   | 36" GRAB BAR  |
| 11   | 42" GRAB BAR  |
| 12   | 18" GRAB BAR - VERTICAL   |



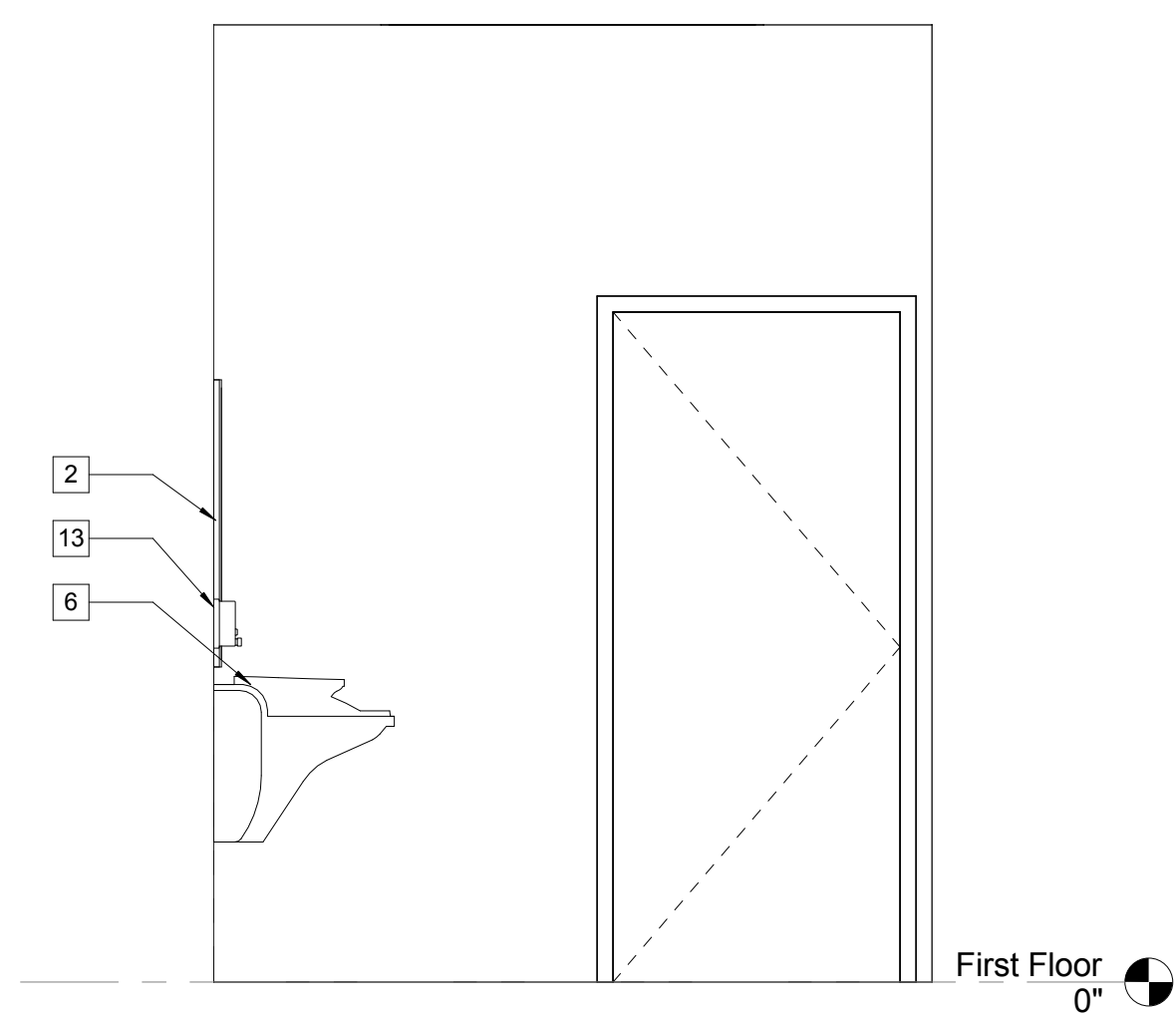
7 MEN'S RR ELEVATION  
1/2" = 1'-0"



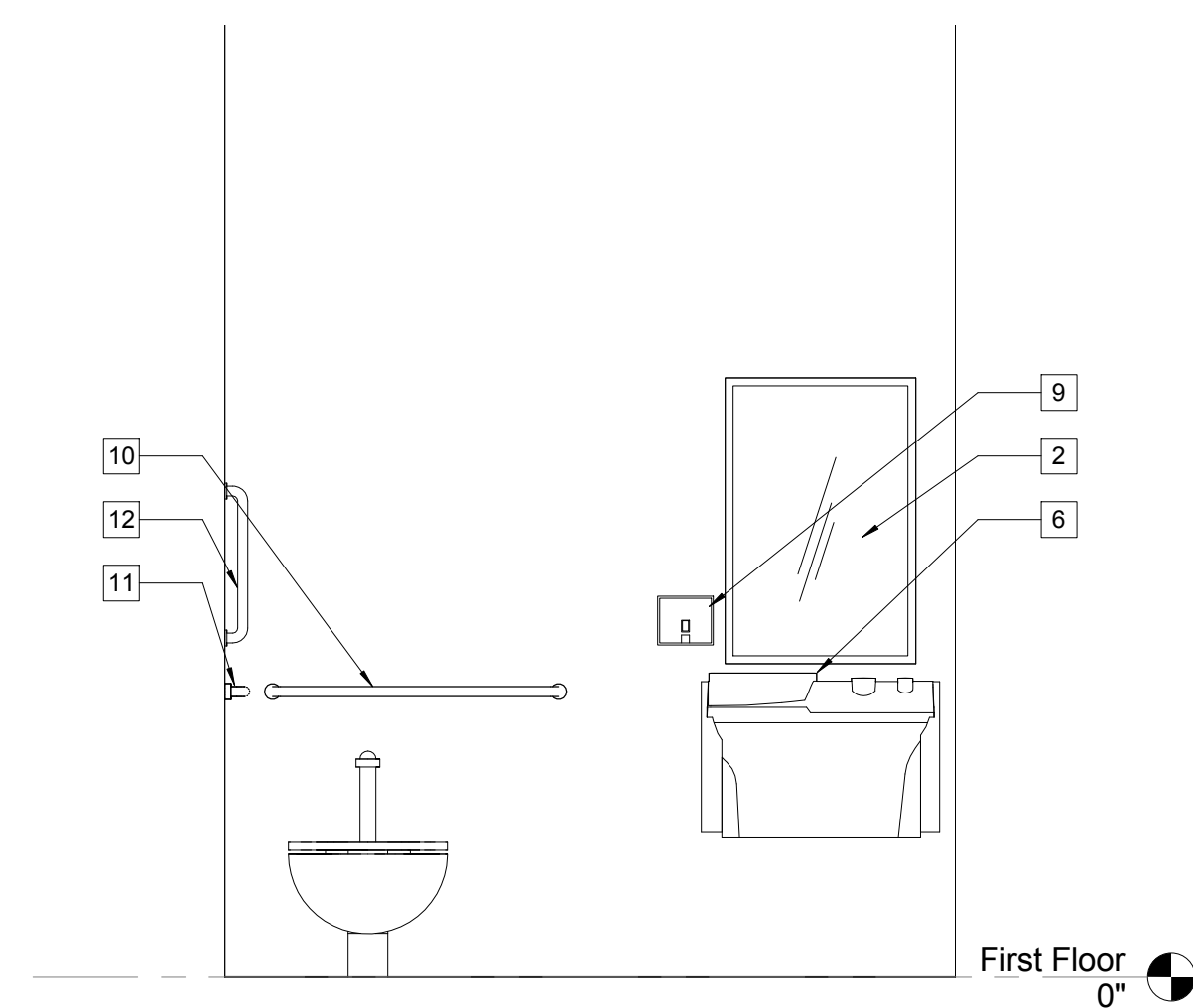
6 MEN'S RR ELEVATION  
1/2" = 1'-0"



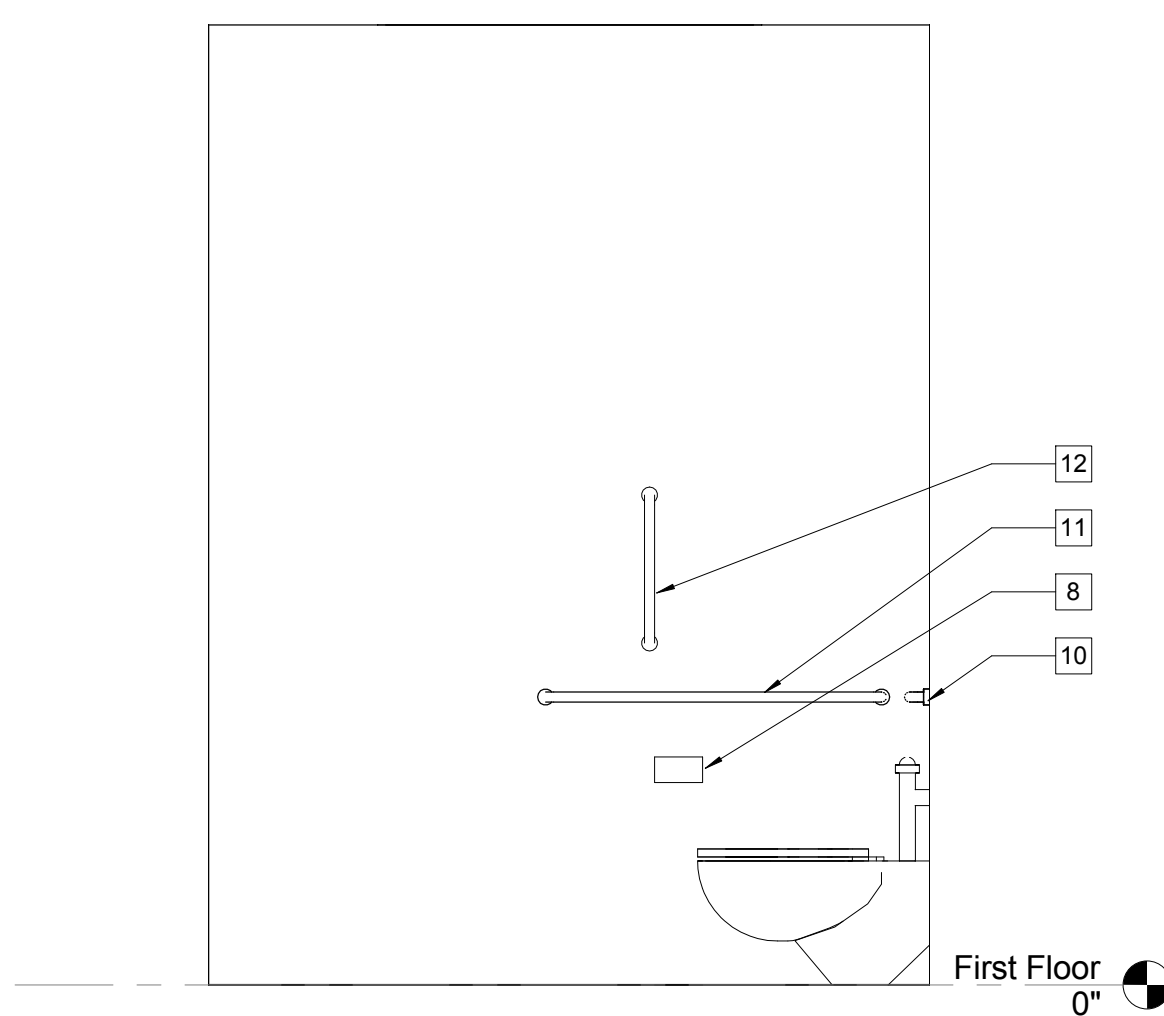
5 MEN'S RR ELEVATION  
1/2" = 1'-0"



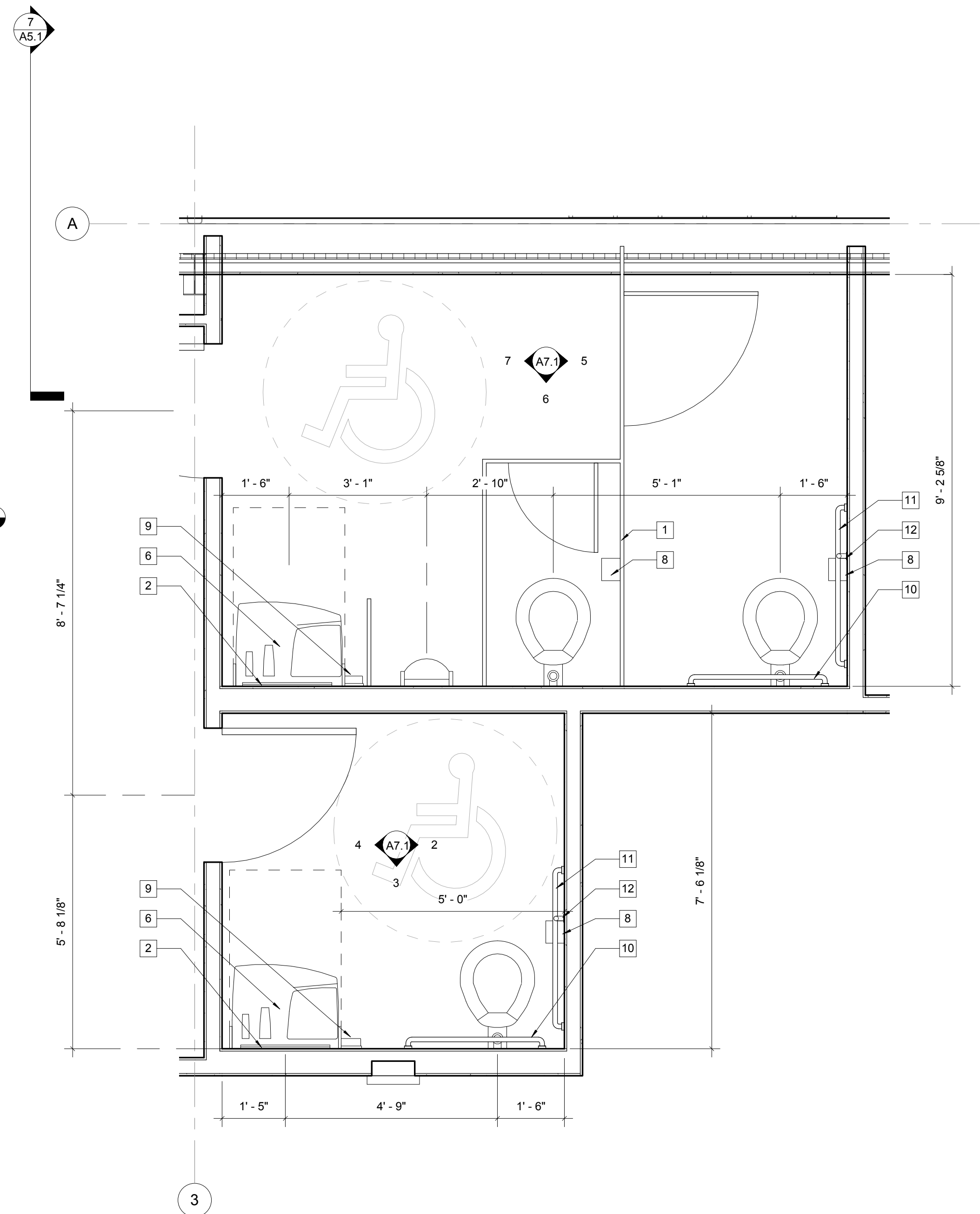
4 WOMEN'S RR ELEVATION  
1/2" = 1'-0"



3 WOMEN'S RR ELEVATION  
1/2" = 1'-0"



2 WOMEN'S RR ELEVATION  
1/2" = 1'-0"



1 ENLARGED RESTROOM PLAN  
1/2" = 1'-0"

