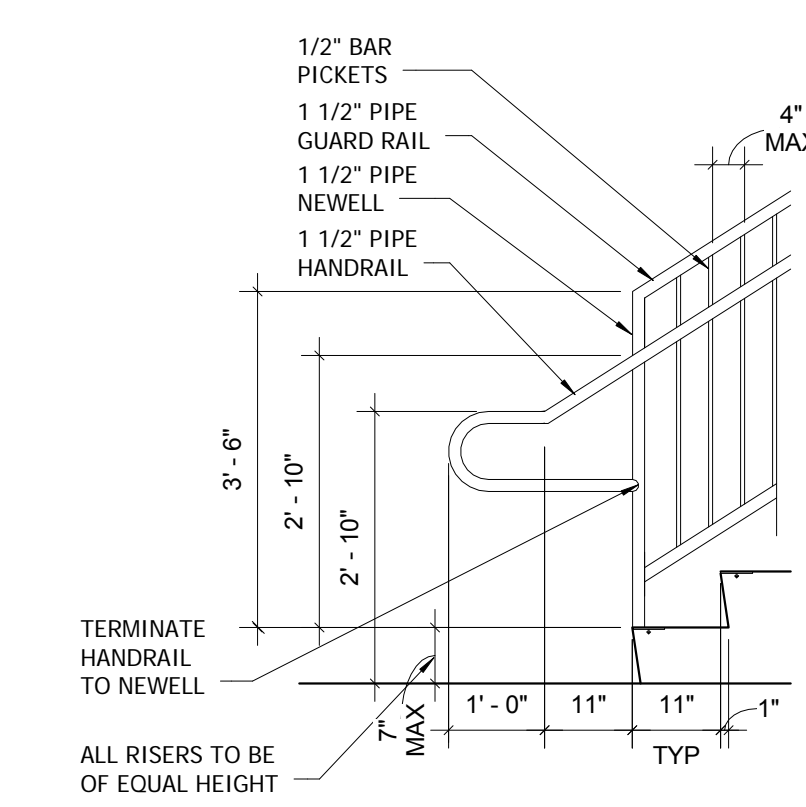
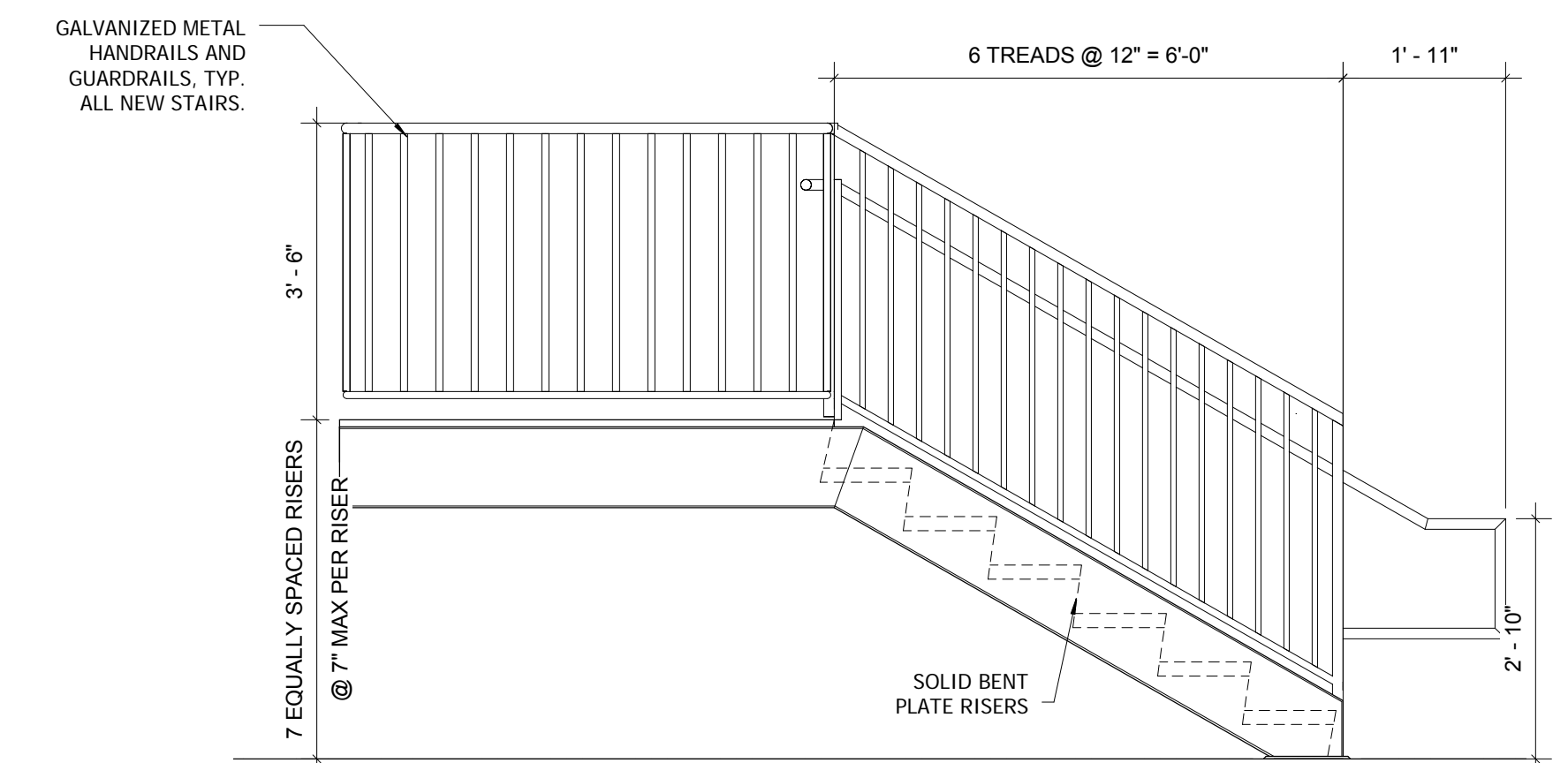


**8 PIPE BOLLARD GUARD LAYOUT**  
1/2" = 1'-0"

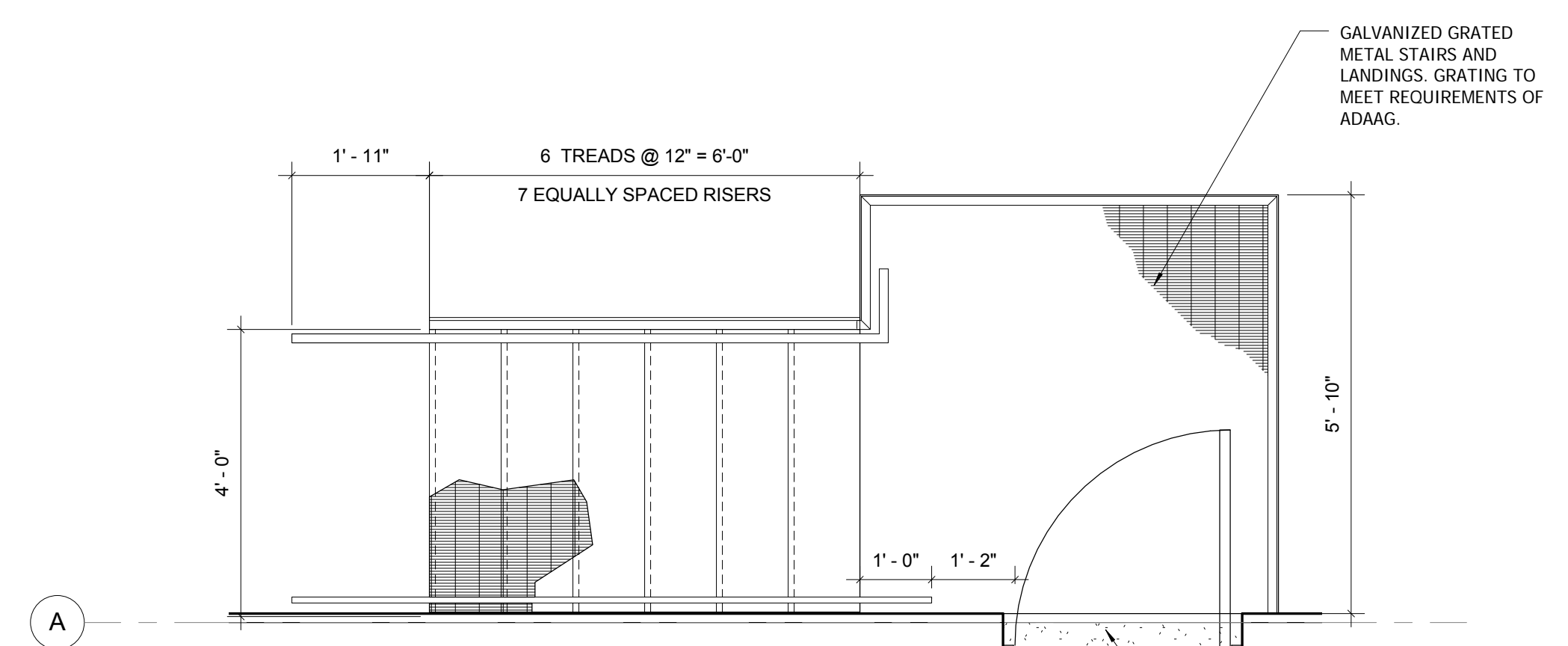


**3 HANDRAIL DETAIL**  
1/2" = 1'-0"

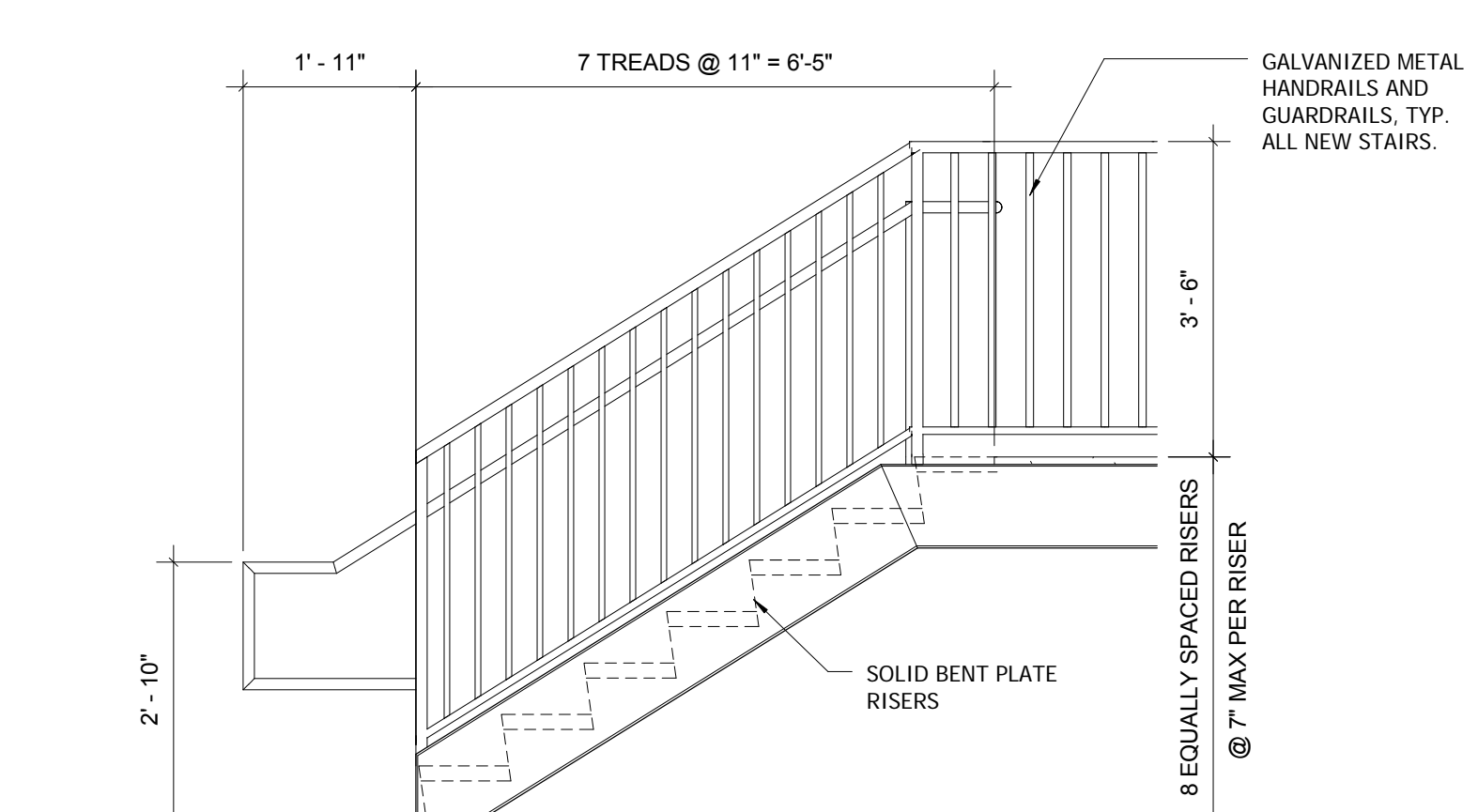


**5 DRIVER ENTRANCE STAIR ELEVATION**  
1/2" = 1'-0"

NOTE: EQUALLY SPACE ALL BARS SO AS TO PROHIBIT PASSAGE OF A 4" SPHERE. MAX SPACING OF NEWELL POSTS IS 4'-0" O.C. TO COMPLY WITH ADA REQUIREMENTS

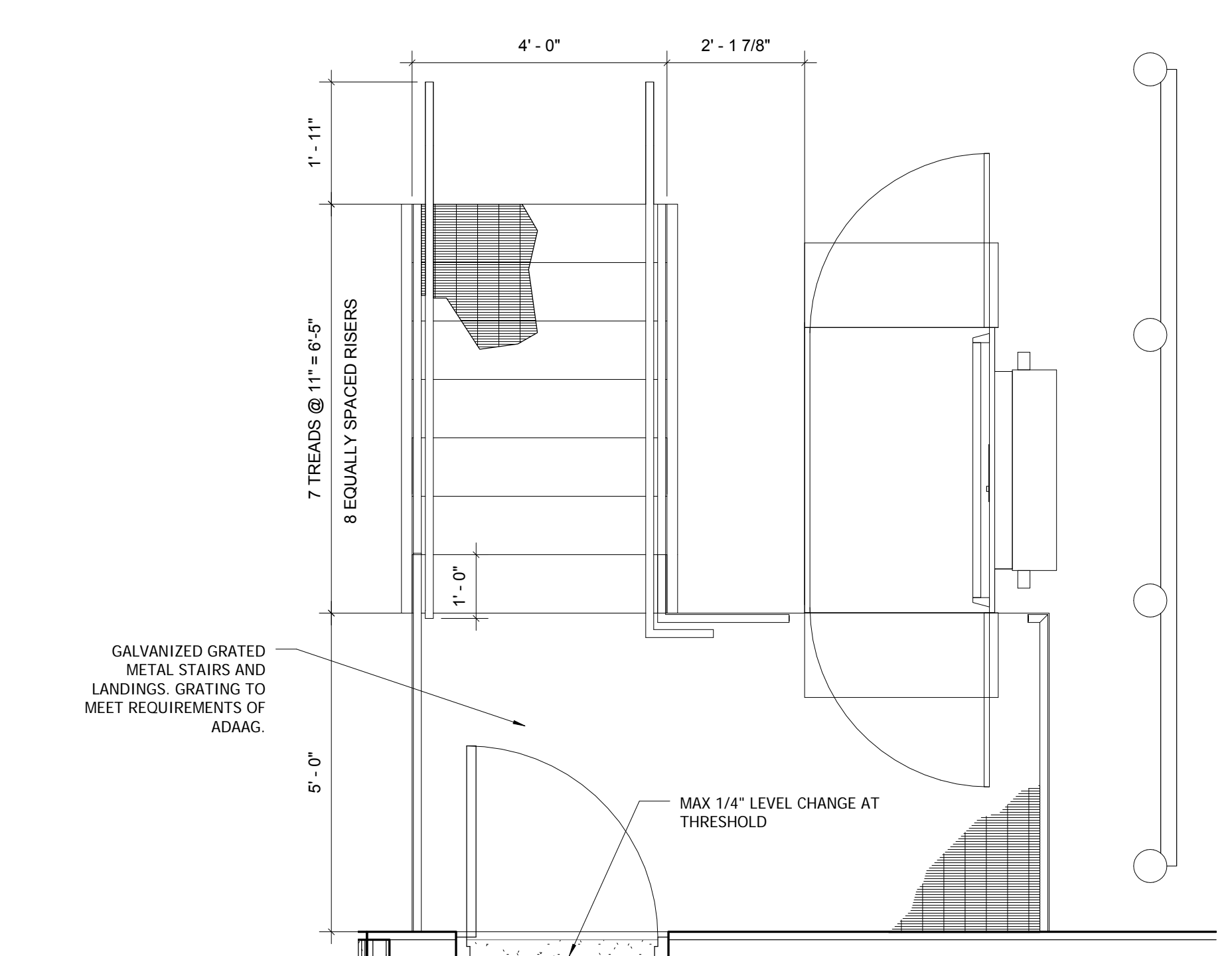


**2 MAIN ENTRANCE STAIR**  
1/2" = 1'-0"

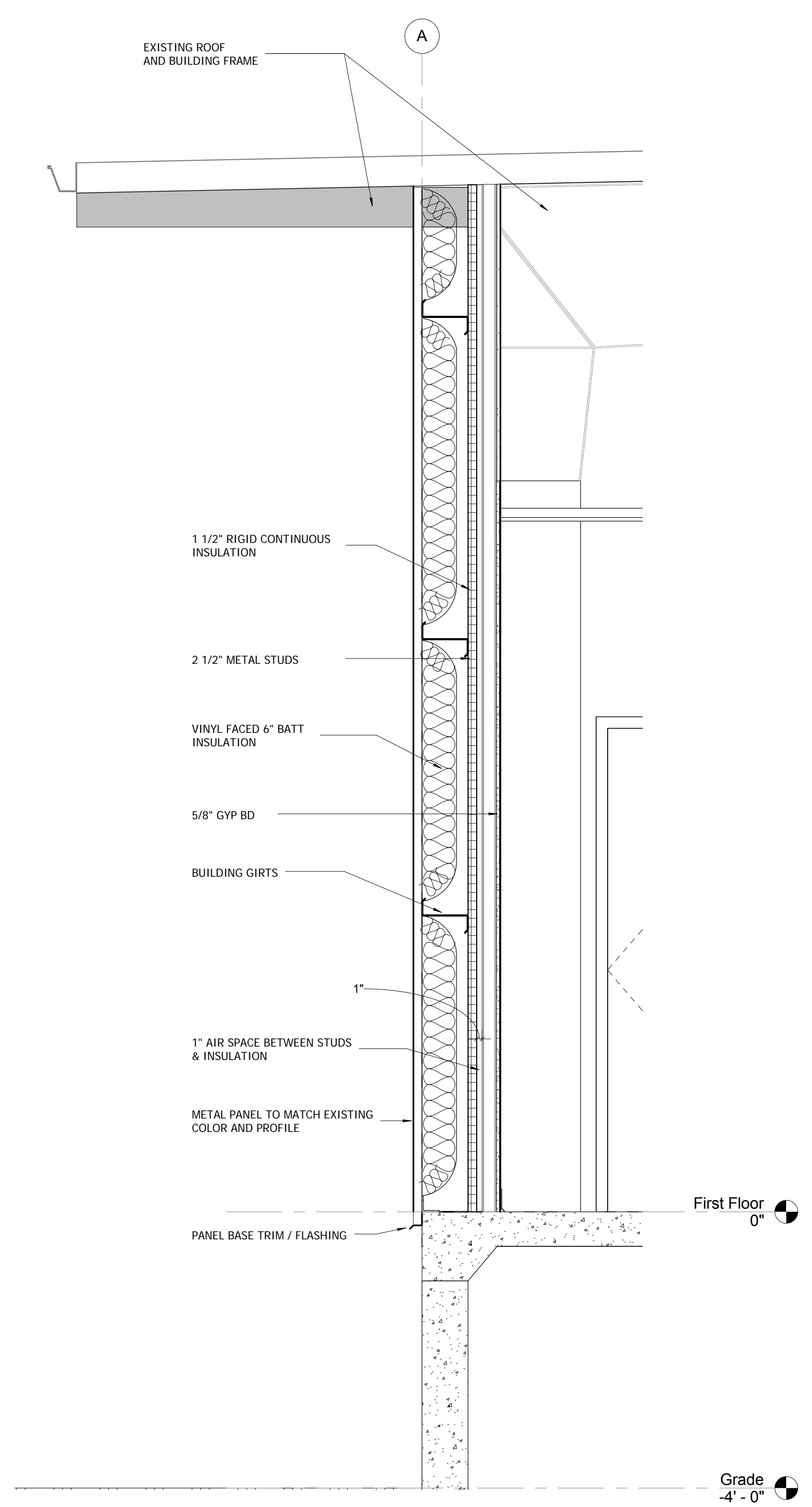


**4 ENTRANCE STAIR ELEVATION**  
1/2" = 1'-0"

NOTE: EQUALLY SPACE ALL BARS SO AS TO PROHIBIT PASSAGE OF A 4" SPHERE. MAX SPACING OF NEWELL POSTS IS 4'-0" O.C. TO COMPLY WITH ADA REQUIREMENTS



**1 DRIVER ENTRANCE STAIR**  
1/2" = 1'-0"



**7 Section 1**  
3/4" = 1'-0"