

SPACE NUMBER	SPACE NAME	FLOOR	BASE	WALL FINISH						CEILING FINISH	NOTES
				NORTH	EAST	SOUTH	WEST				
101	DOCK	SC	-	-	-	-	-	-	EXP		
102	MANAGER'S OFFICE	TZT	RB	PT	PT	PT	PT	PT	ACT		
103	UTILITY / DATA	SC	RB	PT	PT	PT	PT	PT	ACT		
104	TRAINING ROOM	TZT	RB	PT	PT	PT	PT	PT	ACT		
105	OPEN OFFICE	TZT	RB	PT	PT	PT	PT	PT	ACT		
106	DISPATCH	TZT	RB	FRP	FRP	FRP	FRP	FRP	ACT		
107	CHECK-IN / BREAK ROOM	TZT	CT	CT	CT	CT	CT	CT	ACT		
108	MEN'S RR	TZT	CT	CT	CT	CT	CT	CT	VFT		
109	WOMEN'S RR	TZT	CT	CT	CT	CT	CT	CT	VFT		
110	VESTIBULE	TZT	RB	PT	PT	PT	PT	PT	ACT		
111	SHOP	SC	-	-	-	-	-	-	EXP		

FINISH LEGEND

RB - RUBBER BASE
 RBT - RUBBER TILE
 PT - PAINT
 FRP - FIBERGLASS REINFORCED PANEL
 VFT - VINYL FACED LAY-IN TILE
 ACT - ACOUSTIC CEILING TILE
 CPT - CARPET TILE
 PWD - PLYWOOD
 CT - CERAMIC TILE
 TZT - TERRAZZO TILE
 SC - SEALED CONCRETE

- NOTES**
1. ALL GYPSUM BOARD TO BE MOISTURE RESISTANT IN ALL RESTROOMS & JANITOR
 2. FIBERGLASS REINFORCED PANELS TO BE FULL WALL HEIGHT.
 3. INTERIOR MTL BLINDS @ WINDOWS IN ALL ROOMS WITH WINDOWS
 4. RUBBER TREADS, RISERS @ STAIR
 5. USE 1/2" "AC" GRADE PLYWOOD INSTEAD OF 5/8" GYPSUM BOARD FOR WALLS. IF WALL IS RATED ADD A LAYER OF 1/2" "AC" GRADE PLYWOOD ON TOP OF 5/8" GYPSUM BOARD.
 6. PROVIDE DUROCK CEMENT BOARDS @ ALL WALLS TO RECEIVE TILE (IN LIEU OF MOISTURE RESISTANT SHEETROCK)
 7. RUBBER BASE SHALL BE APPLIED TO ALL EXPOSED TOE KICKS OF BASE CABINETS.

FINISH COLOR NOTES

EXTERIOR METAL
 MATCH EXISTING PANELS IN COLOR AND PROFILE

INTERIOR WALLS
 GYPSUM BOARD - SMOOTH TEXTURE
 OUTSIDE GYP CORNERS TO BE THE ROUND STYLE - USG BEADEX PAPER-FACED METAL BULLNOSE (NAIL-ON (SLOC N)) WITH BASE TRANSITION CAP
 PAINT - PITTSBURG PAINTS "CITY LIGHTS" #549-2 SEMIGLOSS
 FIBERGLASS REINFORCED PANELS - NUDO 1207 "MEDIUM GRAY" PEBBLED
 CERAMIC TILE - CROSSVILLE EMPIRE VS85 POLISHED "GENERAL'S GREY" 21"x21" WITH 7"x21" PLANK ACCENT @ 63" U.O.N. TILE SHALL BE PLACED IN 1/3 RUNNING PATTERN - REFER TO ELEVATIONS. MAPEI OPTICOLOR EPOXY GROUT #19 "PEARL GRAY".

FLOORS
 TERRAZZO TILE - WAUSAU -MICRO ECLIPSE TZ16 - POLISHED FINISH 18 X 18 - 1/2"
 CARPET TILE - BIGELOW COMMERCIAL BY MOHAWK "ACCOUNTABLE" - 7559 ANODIZED LAPIS - QUARTER TURNED
RUBBER BASE
 FLEXCO "WALLFLOWERS" #WF-014 MEDIUM GRAY 4"
INTERIOR STAIRS
 FLEXCO EXTRA HEAVY DUTY RADIAL "WALLFLOWERS" #WF-014 MEDIUM GRAY @ OFFICE TREADS & RISERS

CELLINGS
 FLEXCO EXTRA HEAVY DUTY RADIAL "WALLFLOWERS" #WF-014 MEDIUM GRAY @ OFFICE TREADS & RISERS

GRID - "WHITE" 15/16" TEES EQ. TO MATCH CHICAGO METALLIC 200
 TYPICAL - 24"x24" ARMSTRONG NO. 756 FISSURED
 WET ROOMS - 24"x24" ARMSTRONG "CLEAN ROOM VL" VINYL WHITE

DOORS
 WOOD - PLAIN SLICED RED OAK
 HOLLOW METAL DOORS & FRAMES - PAINTED DURON "FIRE STEEL" #8794M
 ALUMINUM - DARK BRONZE ANODIZED

CASEWORK
 COUNTERTOPS - CORIAN - COLOR TO BE "GRAYLITE"
 EXPOSED CORNERS TO BE EASED
 BASE & WALL CABINETS - WILSON ART "NORTH SEA" #D90-60
 DRAWER AND DOOR FRONTS - SOLID PHENOLIC BY KING PLASTICS:
 STARBOARD ST "DOLPHIN GRAY"
 STARBOARD MATERIAL: ALL EDGES ARE TO BE EASED. SPECIFY THICKNESS 3/4"

WINDOWS
 SILLS - MATCH COUNTERTOPS, 1" OVERHANG (INCLUDE APRON BELOW)
 FRAMES - DARK BRONZE ANODIZED ALUMINUM
 BLINDS - 1" BRONZE METAL

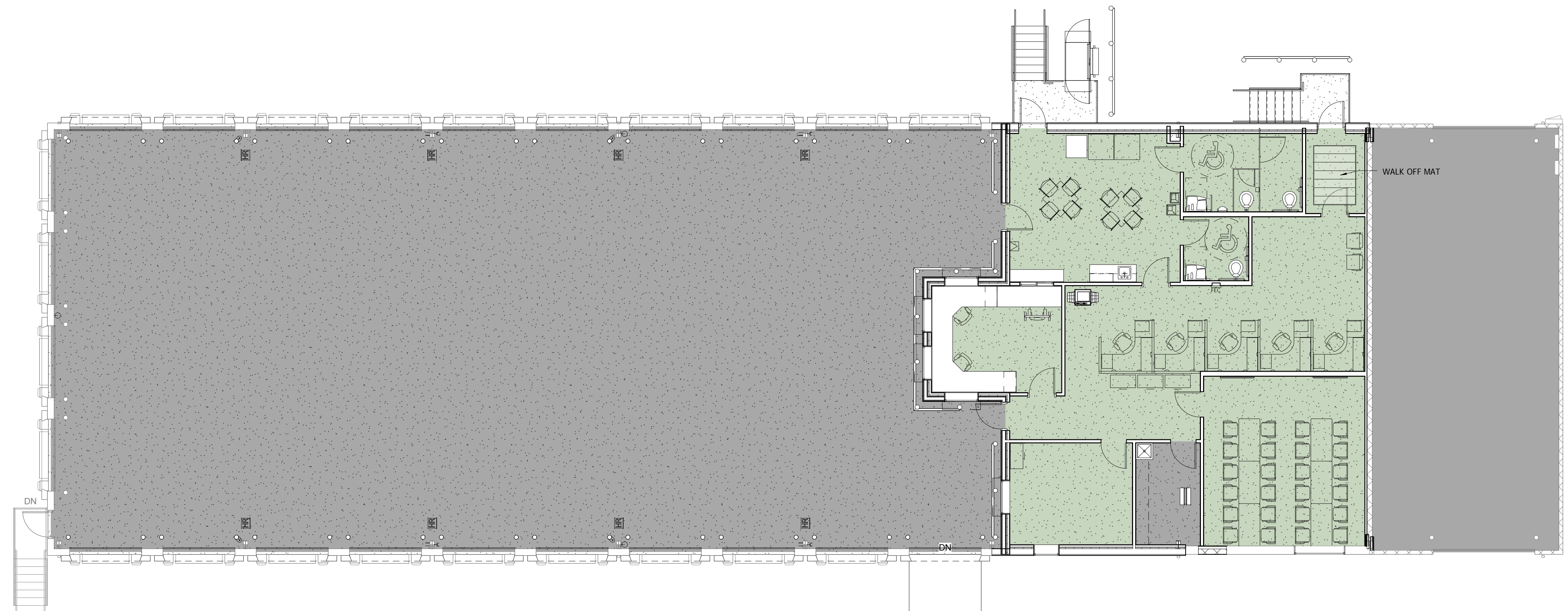
BOLLARDS
 TYPICAL - PAINTED "CAUTION YELLOW"
 NEAR FIRE EXTINGUISHERS - PAINTED "FIRE ENGINE RED"
 NEAR DOCK LADDERS - PAINTED CAUTION YELLOW" BASE AND TOP 10" TO BE GLOSS "BLACK"

DOCK LADDERS - GALVANIZED

GUARDRAILS
 PIPE & CHANNEL RAIL SYSTEM - PAINTED "CAUTION YELLOW"

EXTERIOR STAIR RAILING AND RAMP RAILING
 AT OR NEAR OFFICE MAIN ENTRANCE - PAINTED DARK BRONZE TO MATCH WINDOW FRAMES
 AT DOCK - UNPAINTED GALVANIZED

TOILET PARTITIONS
 400 SERIES (FLOOR MOUNT, OVHD BRACE) BY BRADLEY. INCLUDE CONTINUOUS BRACKETS, BUMPERS, COAT HOOK, LATCHES.
 SOLID PLASTIC S200 "GRAY" EVERYWHERE ELSE
BRADLEY SINK SYSTEM - ADVOCATE AV30, COLOR - CHARCOAL GREY
DOOR HARDWARE - SCHLAGE HEAVY DUTY (U.O.N.), SATIN CHROME OR SIMILAR
ELECTRICAL DEVICES & COVER PLATES - TO BE GREY WHEN LOCATED IN CERAMIC TILE WALL. ALL OTHER LOCATIONS SHALL BE WHITE.



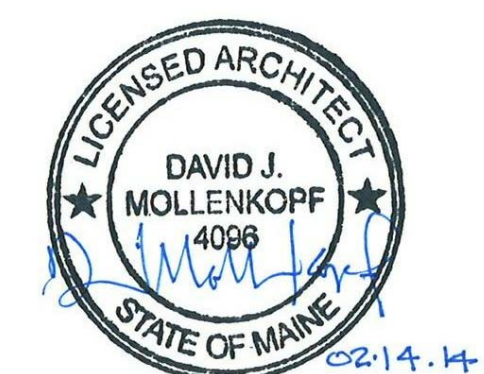
FLOOR FINISH

■ SC
 ■ TZT

1 FIRST FLOOR PLAN
 1/8" = 1'-0"



909 10th Ave South • Suite 414
 Nashville, Tennessee 37203
 v. 615.296.9146 • f. 615.733.0052



ME LICENSE #ARC409 - EXP 4/31/2015
 Architect: David J. Mollenkopf



Contractor:
DF Chase, Inc.
 3001 Army Drive
 Suite 225
 Nashville, TN 37204



Terminal Renovation for:
Old Dominion Freight Line
ODFL PORTLAND, ME
 185 RAND ROAD,
 PORTLAND, ME 04102

PERMIT ISSUE 02/14/2014

Project No. 13061.00

The Architect hereby reserves its common law copyright and other property rights in these plans, ideas and designs which are not to be reproduced, changed or copied in any form or manner, whatsoever, nor are they to be assigned to any third party without first obtaining the express written permission from the Architect. This drawing is not final or to be used for construction until signed by the Architect.

Sheet Name:
 FINISH PLAN

Sheet Number:

A4.2