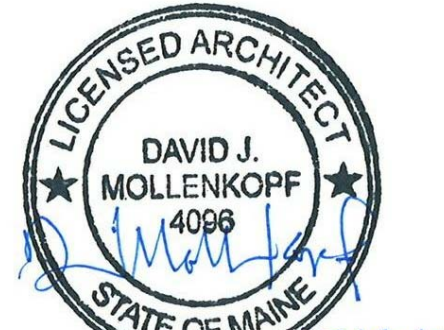


909 10th Ave South • Suite 414
Nashville, Tennessee 37203
v. 615.296.9146 • f. 615.733.0052



ME LICENSE #ARC409 - EXP 4/31/2015
Architect: David J. Mollenkopf



Contractor:
DF Chase, Inc.
3001 Armory Drive
Suite 225
Nashville, TN 37204



Terminal Renovation for:
Old Dominion Freight Line
ODFL PORTLAND, ME
185 RAND ROAD,
PORTLAND, ME 04102

PERMIT ISSUE 02/14/2014

Project No. 13061.00

The Architect hereby reserves its common law copyright and other property rights in these plans, ideas, and designs which are not to be reproduced, changed or copied in any form or manner whatsoever, nor are they to be assigned to any third party without first obtaining the express written permission from the Architect. This drawing is not final or to be used for construction until signed by the Architect.

Sheet Name:
LIFE SAFETY / PARTITIONS

Sheet Number:

A0.4

CODE ANALYSIS

- Maine Uniform Building and Energy Code
- 2009 edition of the International Building Code
 - 2009 edition of the International Existing Building Code
 - 2009 edition of the International Residential Code
 - 2009 edition of the International Energy Conservation Code
- ASHRAE Standards 62.1, 62.2, and 90.1
2009 NFPA 1 - Fire Code
2009 NFPA 54 - Natural Fuel and Gas Code
2009 NFPA 101 - Life Safety Code
2007 (UPC) Maine State Plumbing Code
2007 NEC National Electric Code
2010 ADAAG Accessibility Code

CODE ANALYSIS

- Occupancy: Dock - Group S1 Moderate Hazard Storage
Office - Group B Separated from Dock with 3 Hour Rated Partition
Shop - Group S1 Vehical Repair unseparated from Office
- Per IBC 508.3 & Table 508.4 building meets Nonseparated Occupancy requirements, Separation is being provided to allow for future expansion plans.

- Construction Type: Type IIB, Unprotected
- Allowable Area: Dock - Group S1 - 17,500 SF per IBC Table 503
- Actual Area :
Shop 1,096
Dock 5,406
Office 2,335
Total: 8,837
- Allowable Height: 3 Stories, 55'-0"
- Actual Height: +/- 15' -10" to roof ridge
- Fire Protection: No Sprinkler System
- Travel Distance: 200' per IBC Table 1016.1

OCCUPANT LOADS - TERMINAL BUILDING

Automatic Fire Sprinkler: Existing: No / Proposed: No

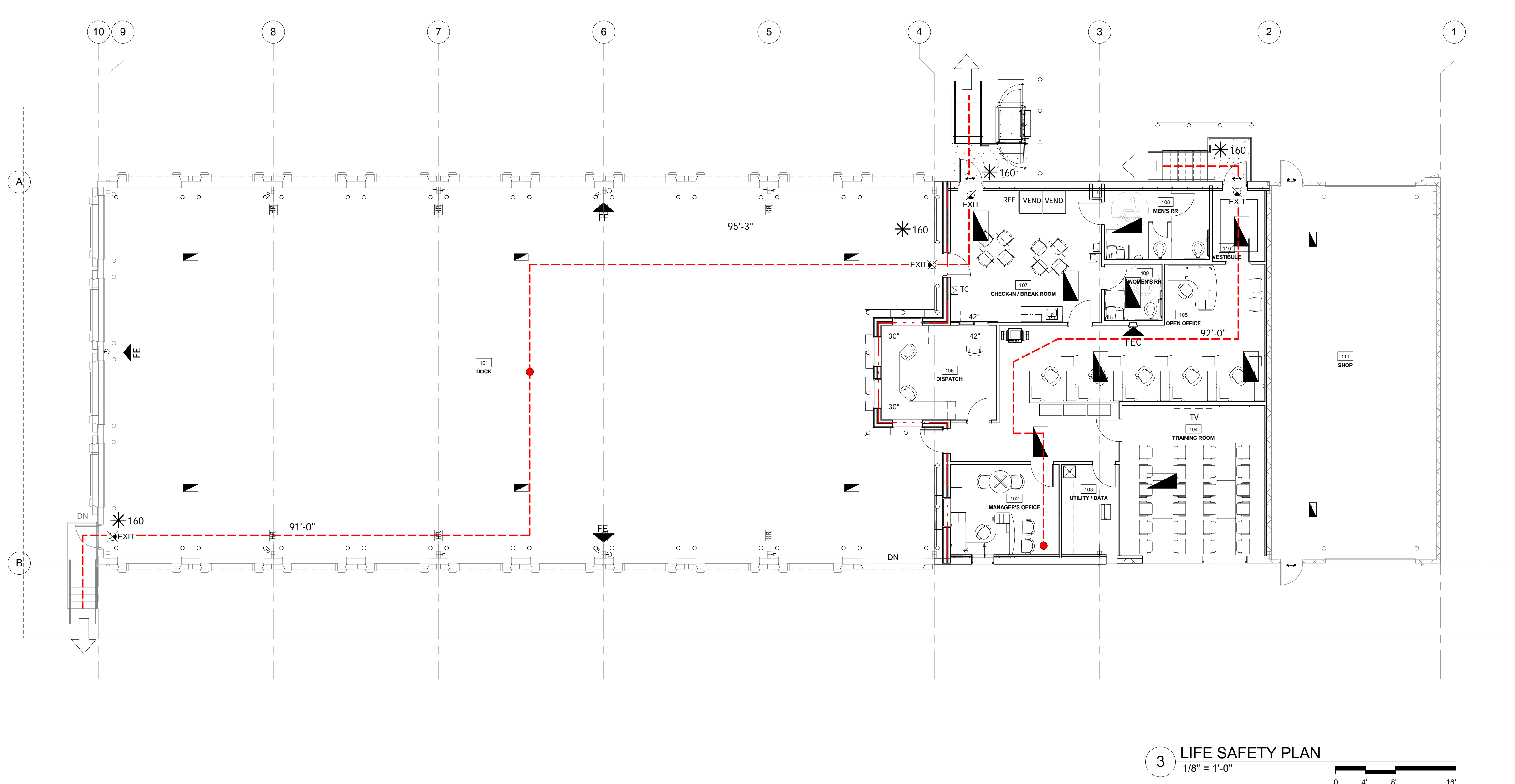
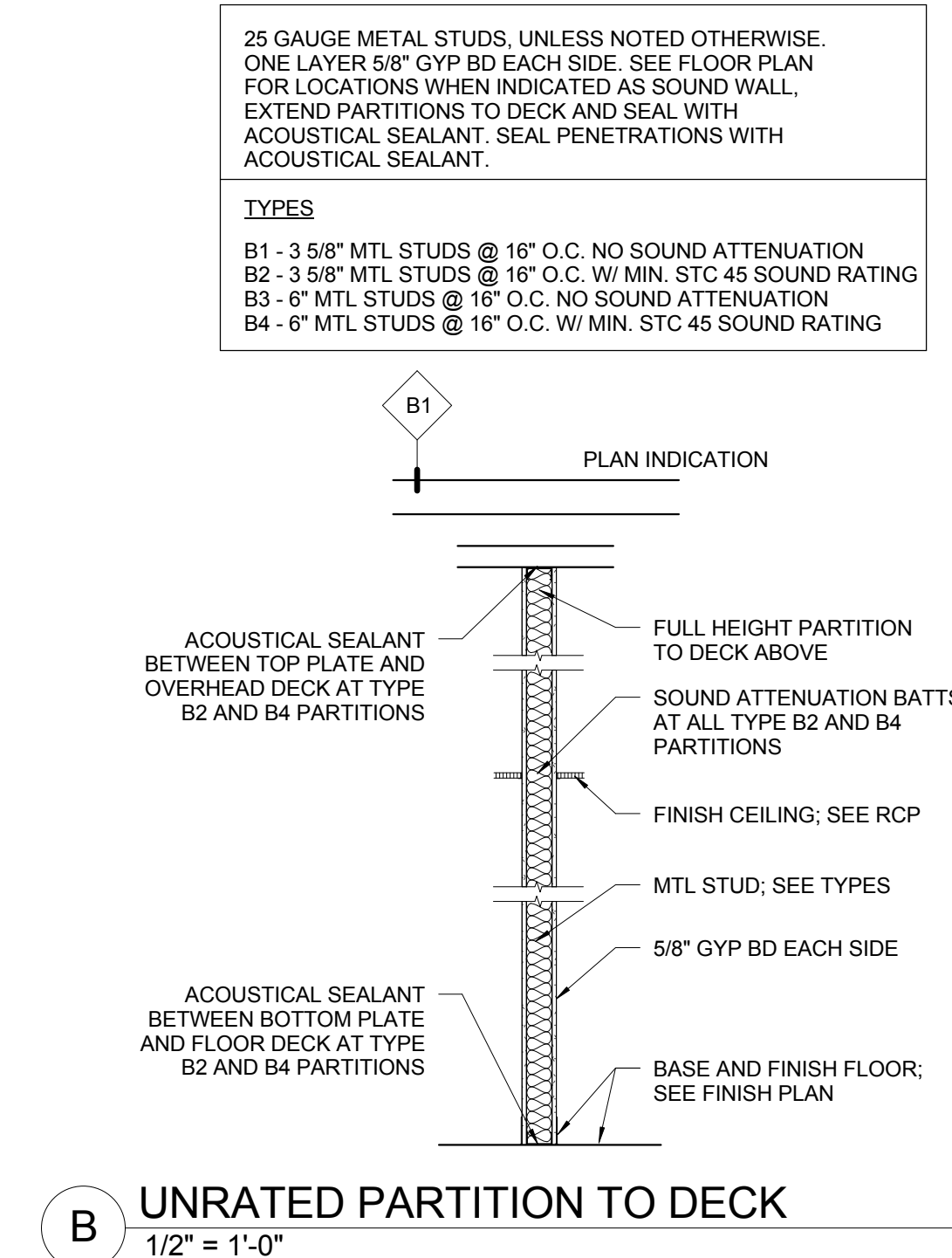
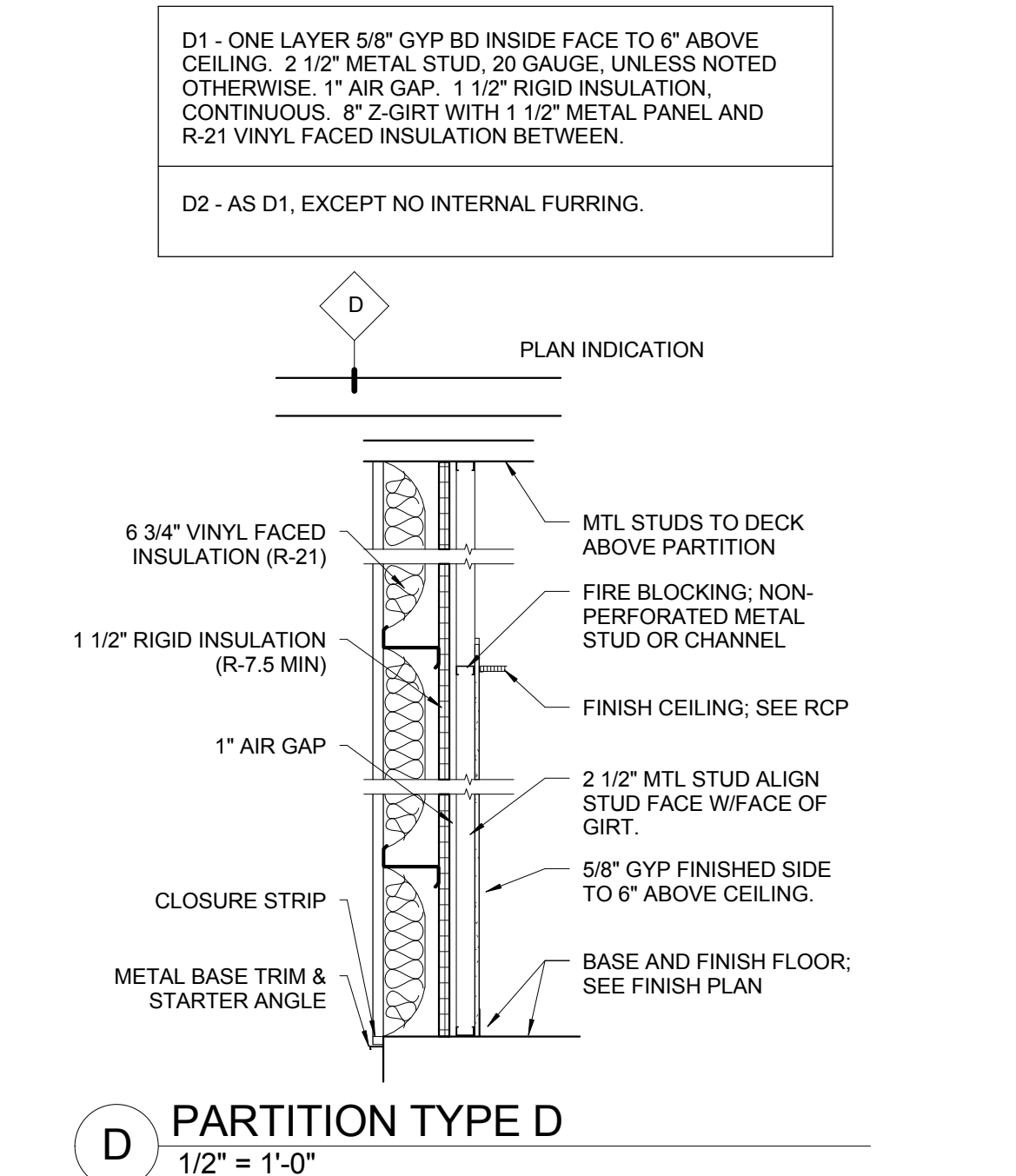
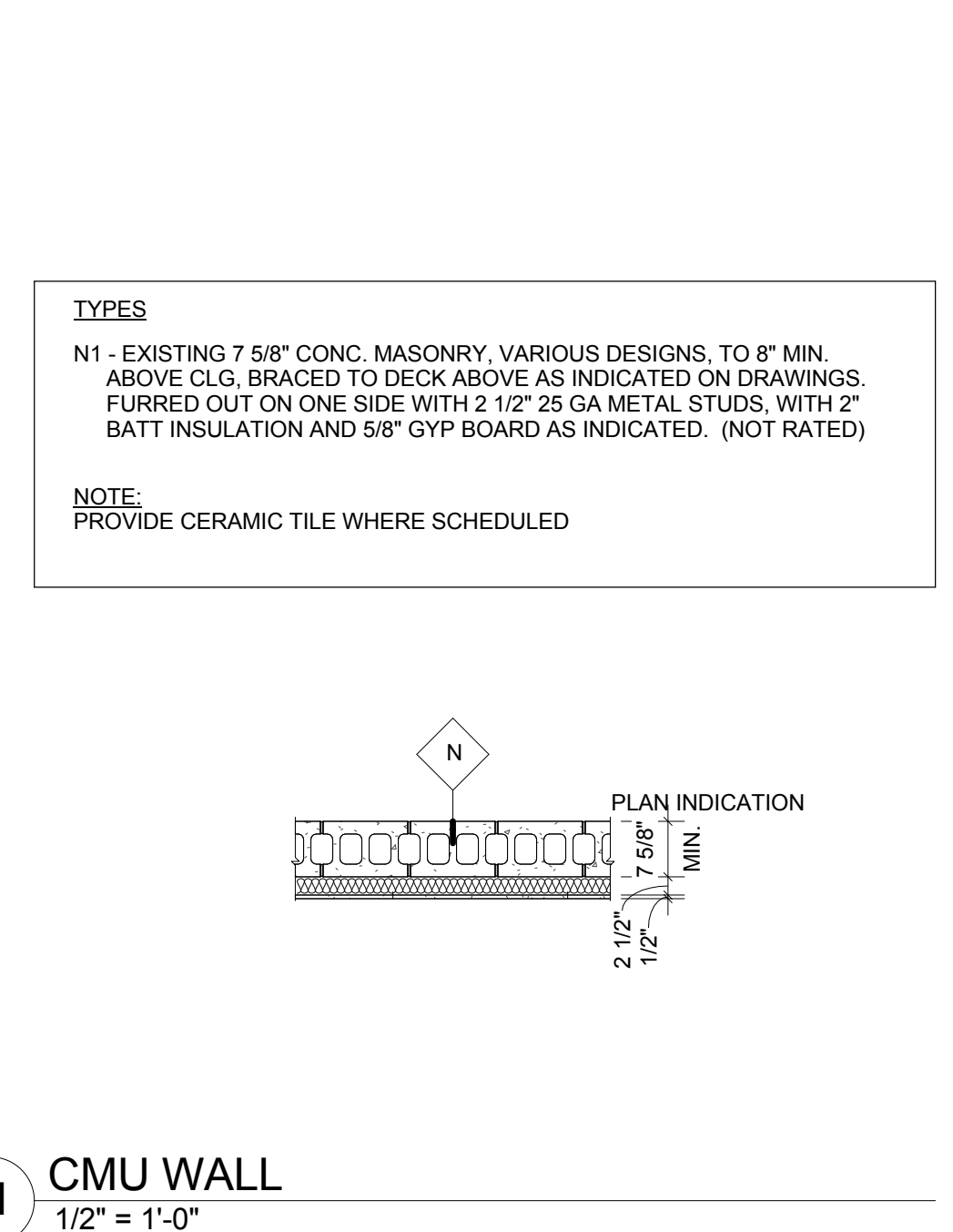
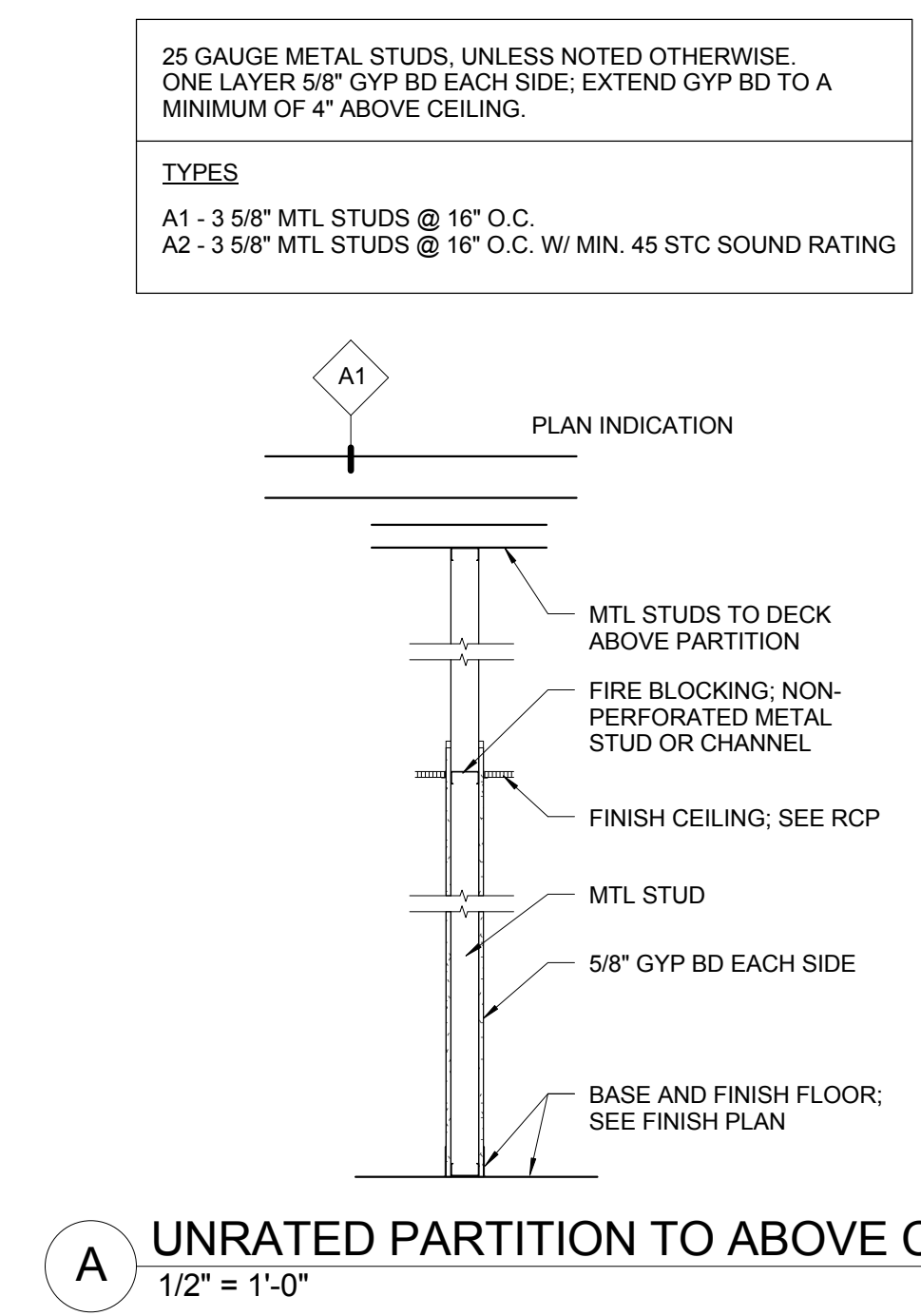
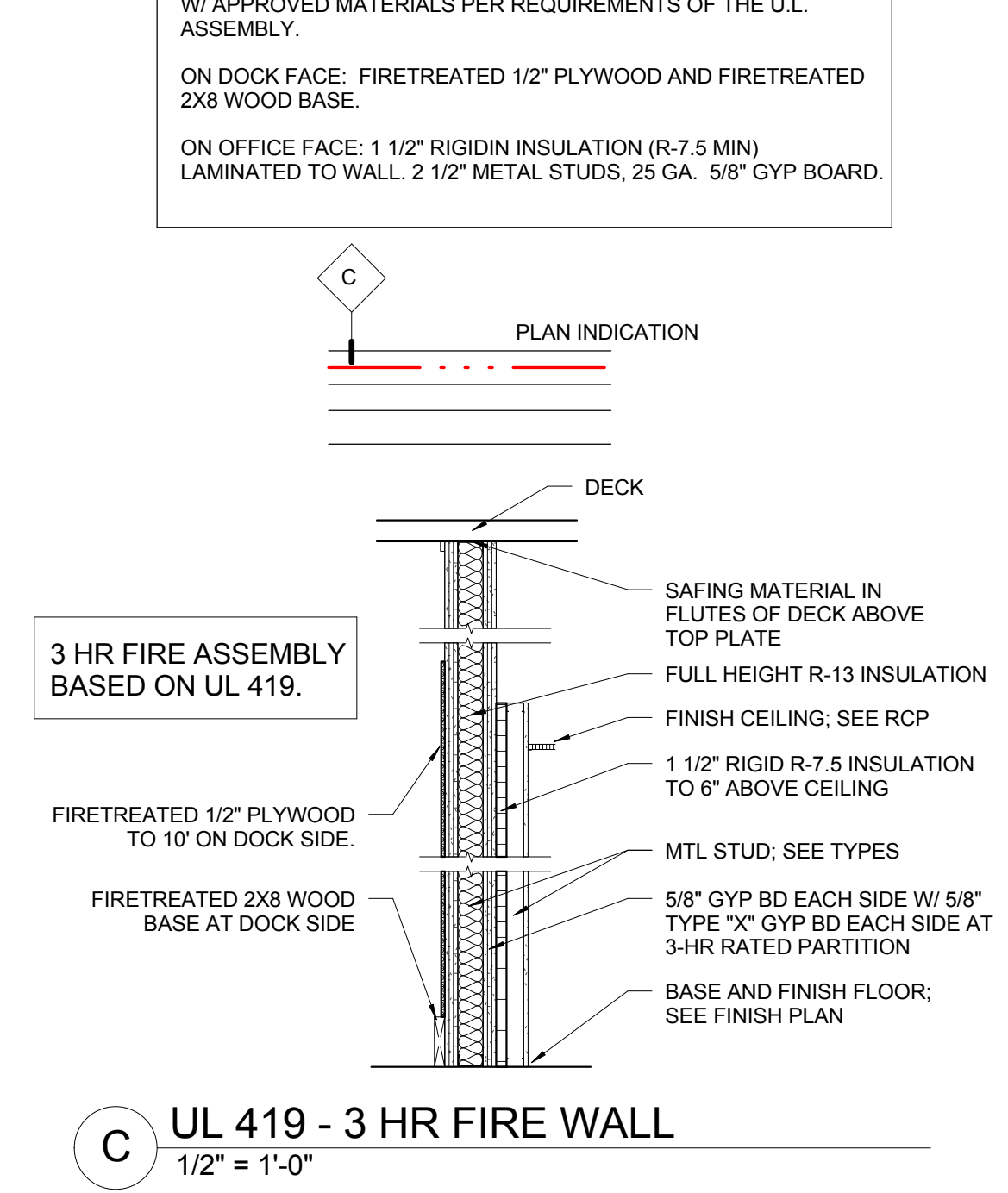
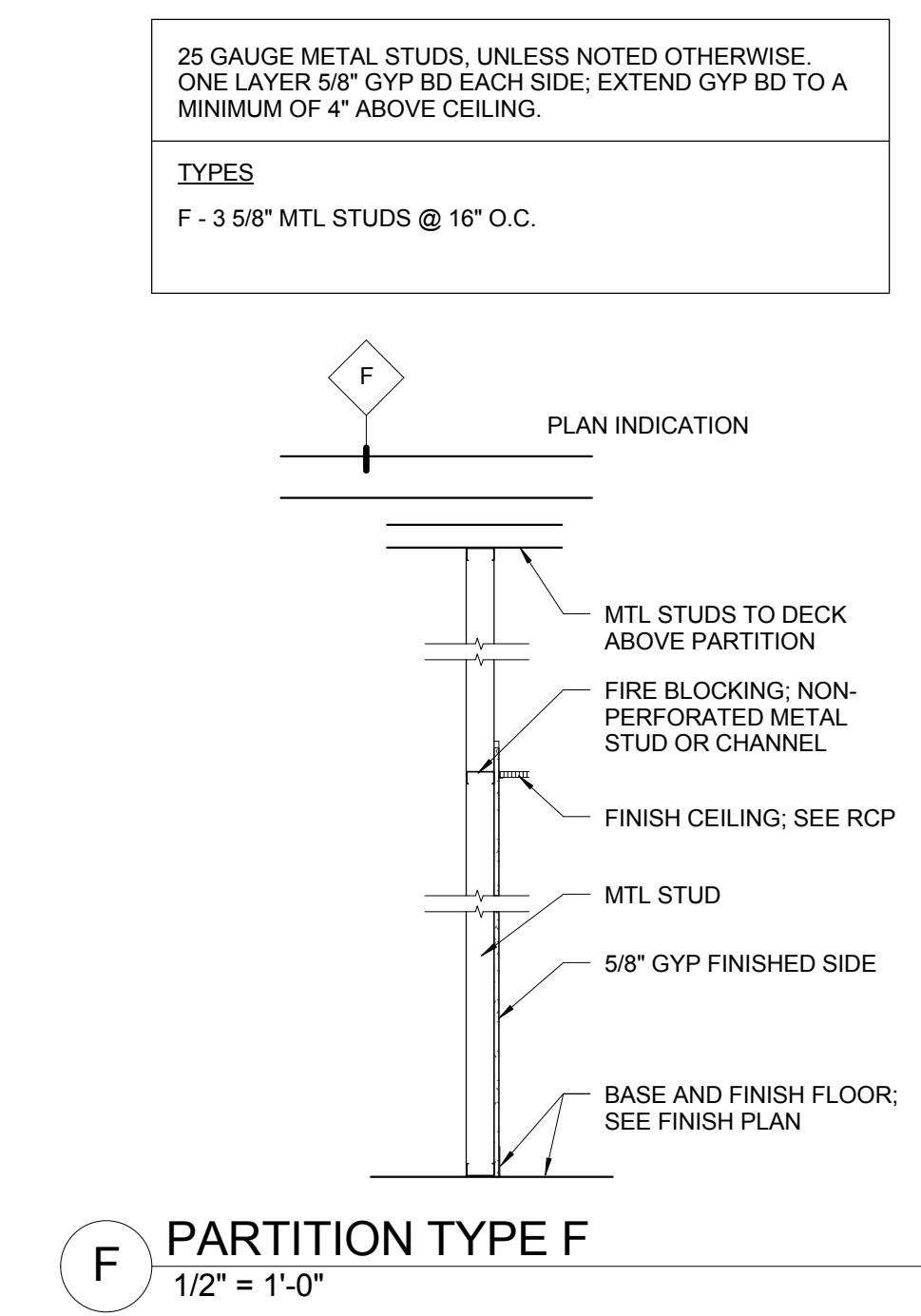
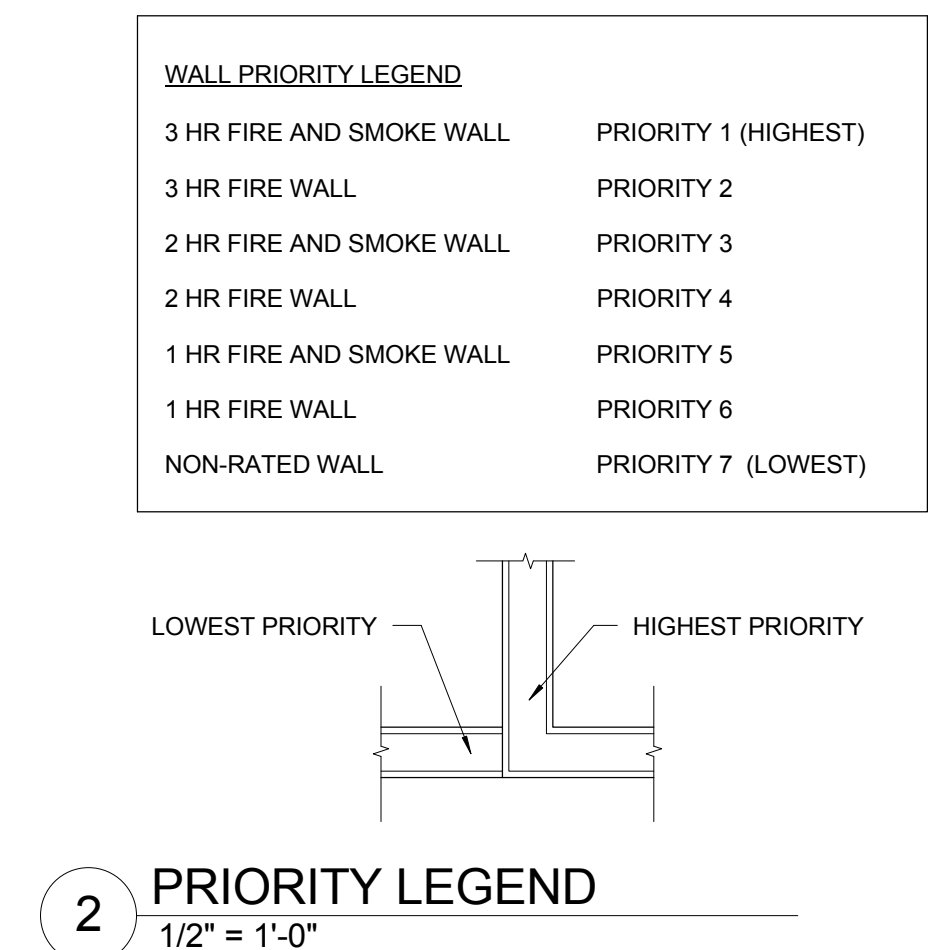
Occupant Load:	Shop	1,096/300 =	4 occ
	Dock	5,406/300 =	19 occ
	Office	2,335/100 =	24 occ
	Total Occupant Load		47 occ

Required Egress Width: 47 x 0.2" = 10"
Provided Egress Width: 128"

Max Travel Distance Allowed: 200'-0"

LIFE SAFETY LEGEND

- ⊗ Exit Sign
- 170'-0" Maximum Travel Distance
- ↔ Point of Egress
- * Maximum Exit Capacity (Number of People)
- ☺ Fire Extinguisher (Wall Mount) FE
- ☺ Fire Extinguisher (Recessed Wall Cabinet) FEC
- ☑ Emergency Overhead Lighting
- ☑ Emergency Outdoor Lighting



3 LIFE SAFETY PLAN
1/8" = 1'-0"