

HYDRALIC--SYSTEM

THIS BUILDING IS PROTECTED BY A HYDRALICALLY DESIGNED AUTOMATIC SPRINKLER SYSTEM

LOCATION	AREA # 1
NO. OF SPRINKLERS	10
BASIS OF DESIGN	1. RESIDENTIAL 2. RESIDENTIAL W/ OCCUPANCY
SYSTEM DEMAND	1. 0.9M SQ FT 2. 264.0 SQ FT
1. 0.9M SQ FT	264.0 SQ FT
2. 264.0 SQ FT	0.9M SQ FT

HYDRALIC NAMEPLATE DETAIL

HYDRALIC--SYSTEM

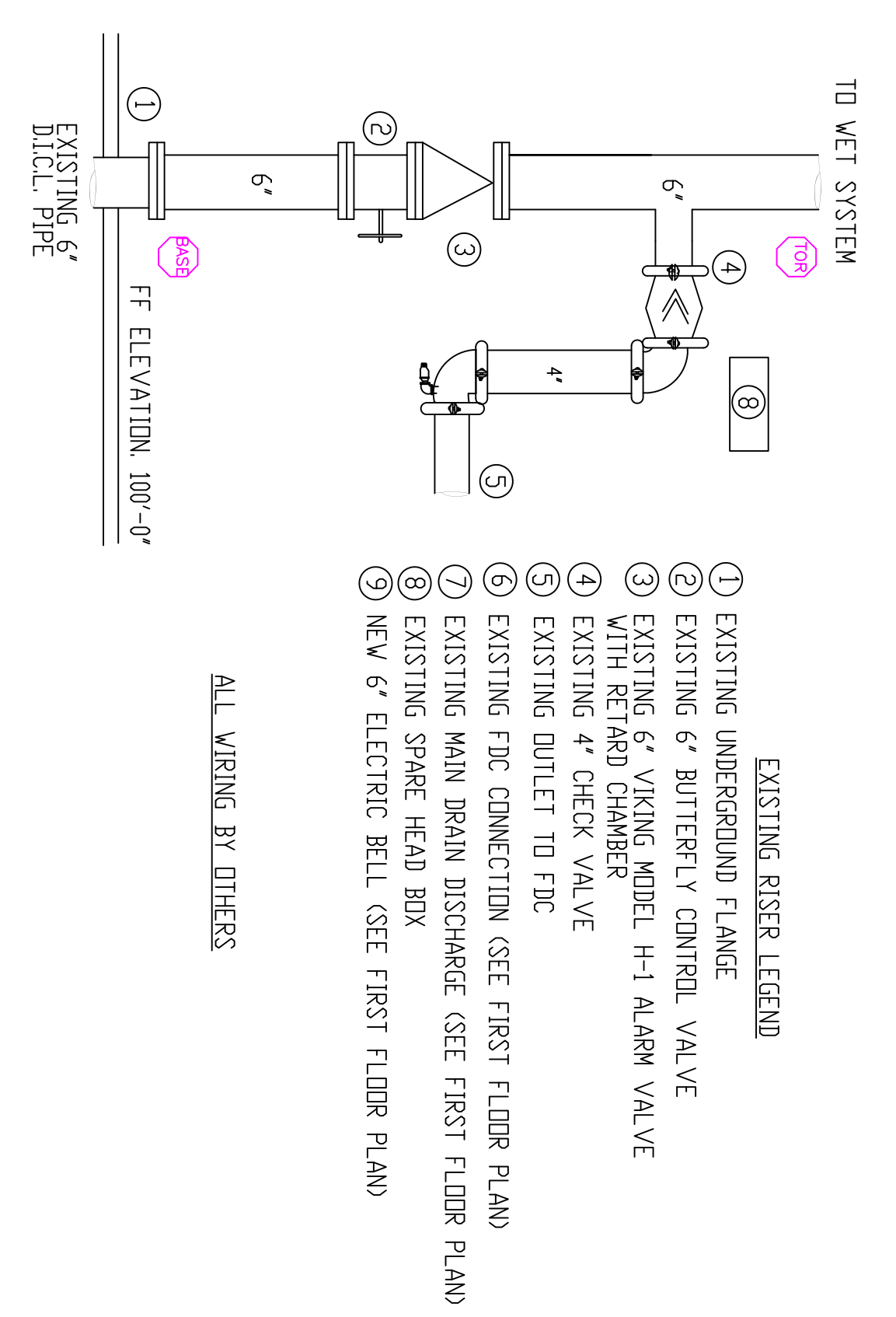
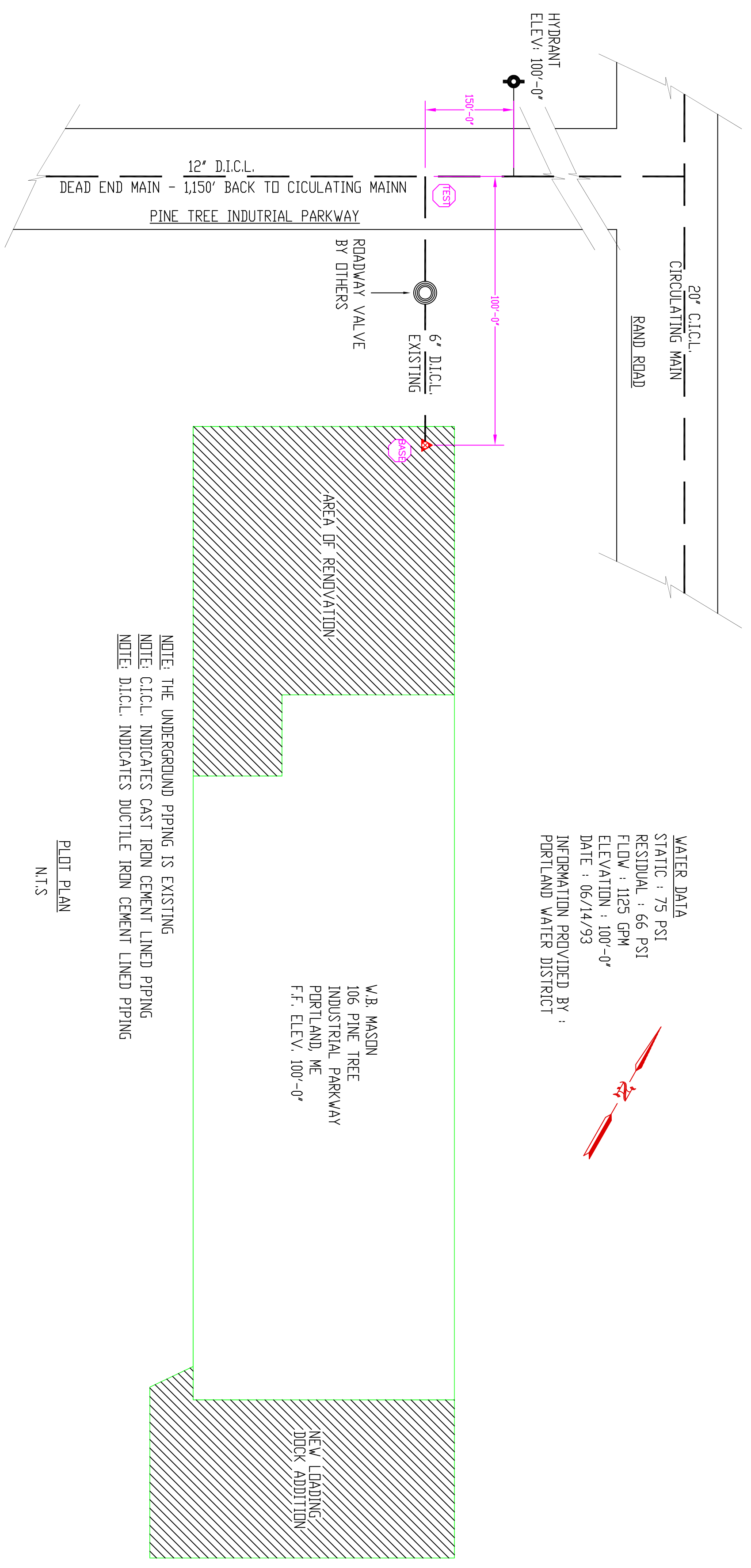
THIS BUILDING IS PROTECTED BY A HYDRALICALLY DESIGNED AUTOMATIC SPRINKLER SYSTEM

LOCATION	AREA # 2
NO. OF SPRINKLERS	10
BASIS OF DESIGN	1. RESIDENTIAL 2. RESIDENTIAL W/ OCCUPANCY
SYSTEM DEMAND	1. 0.9M SQ FT 2. 264.0 SQ FT
1. 0.9M SQ FT	264.0 SQ FT
2. 264.0 SQ FT	0.9M SQ FT

HYDRALIC NAMEPLATE DETAIL

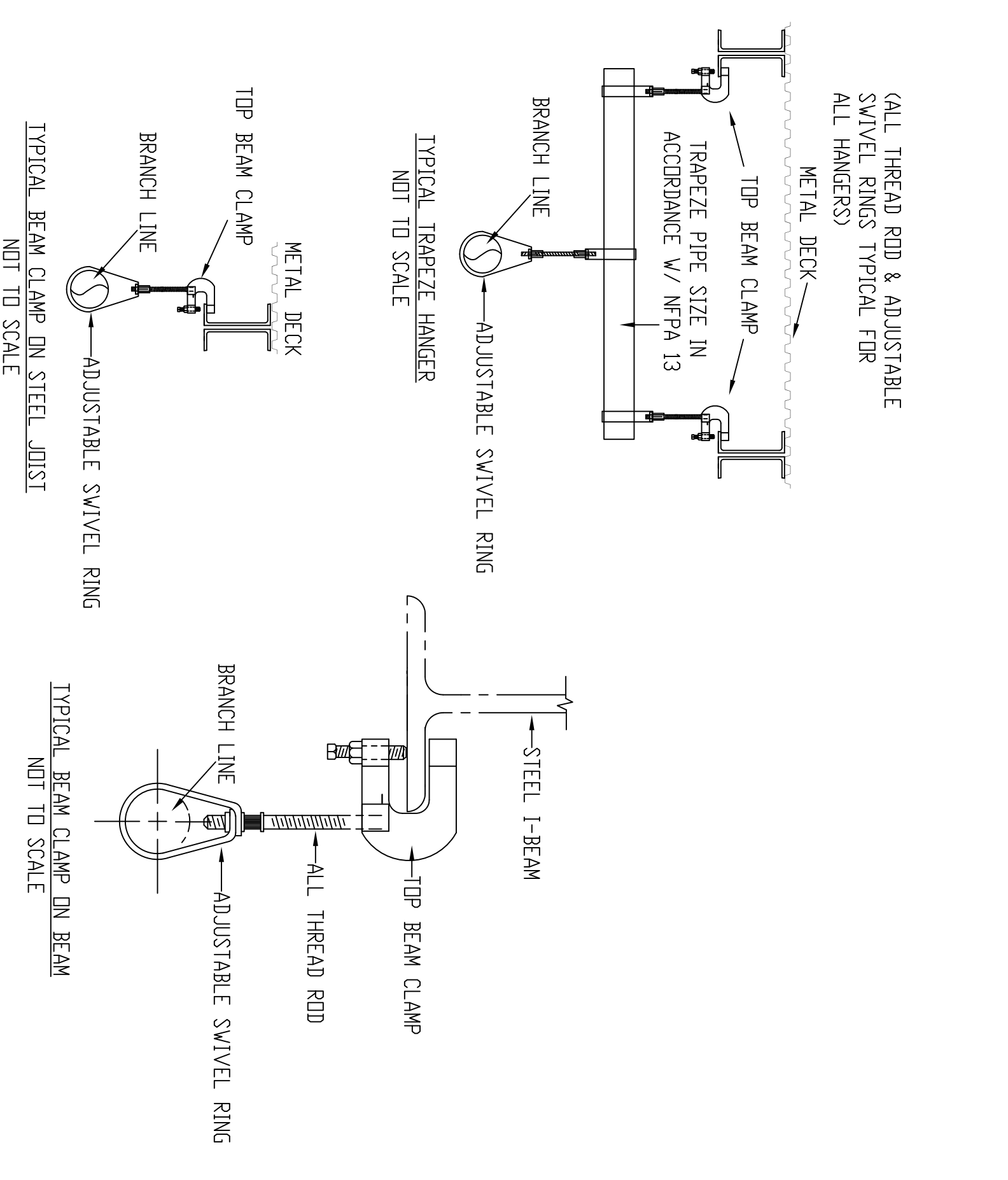
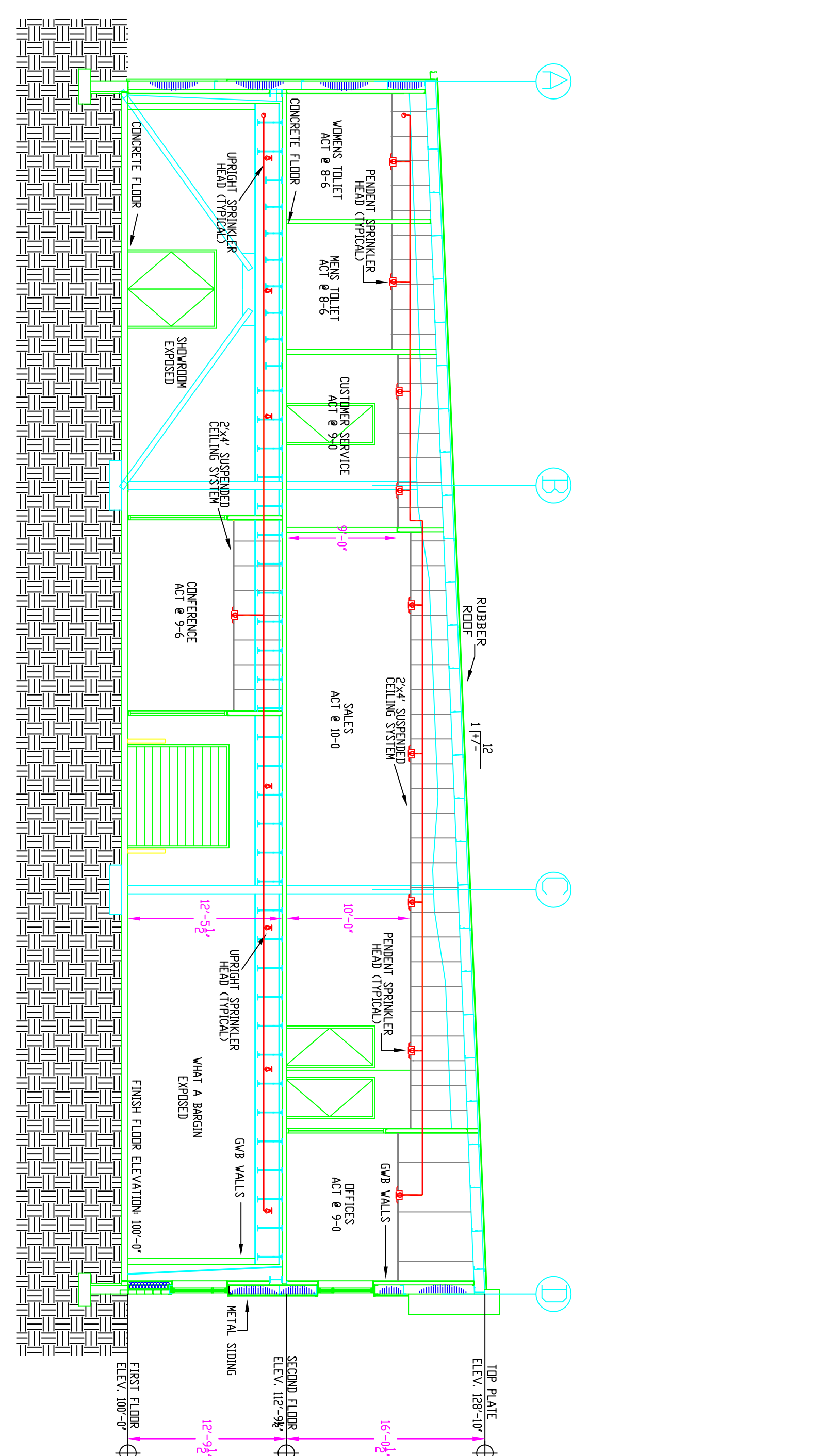
SPRINKLER HEAD SCHEDULE

SPRINKLER TYPE	SYMBOL	TEMPERATURE RATING (°F)	MINIMUM ORIFICE SIZE	QUANTITY THIS JOB	MANUFACTURER & MODEL
SEMI-RECESSED WHITE PENDENT	●	155°	1/2"	79	VICTAULIC V2708 OR
BRASS UPRIGHT	O	155°	1/2"	119	VICTAULIC V2704 OR
BRASS HORIZONTAL SIDEWALL	▽	155°	1/2"	9	VICTAULIC V2710 OR
EXTENDED PENDENT WHITE PENDENT	●	155°	1/2"	30	VICTAULIC V2708 OR



GENERAL SPRINKLER SYSTEM DATA

- BUILDING GENERAL CONTRACTOR: TURNER BROTHERS, LLC, 34 BELLOWS ROAD, RAINHAM, VA 02767
- BUILDING ADDRESS: V&A MASON, PINE TREE INDUSTRIAL PARKWAY, PORTLAND, MAINE
- CONSTRUCTION: CONCRETE/STEEL STRUCTURE
- AREA PROTECTED BY SPRINKLER SYSTEM: THE TOTAL AREA PROTECTED FOR THE NEW ADDITION AND AREAS OF THE RENOVATION IS 26400 SQ. FT. THE TOTAL AREA PROTECTED FOR THE ENTIRE SYSTEM IS 43,945' SQ. FT.
- MAXIMUM SPRINKLER HEAD SPACING: 15' x 15'
- MAXIMUM SQUARE FOOTAGE PER SPRINKLER HEAD: 225 SQ. FT.
- SPRINKLER SYSTEM DESIGNER: TMM
- SPRINKLER SYSTEM DESIGNER CHECKED BY: CDD NICET LEVEL III CERT# 091644
- CONTRACTOR'S MAINE STATE LICENSE NUMBER: 309



GENERAL NOTES

SCOPE OF WORK

A. THE CONTRACTOR IS RESPONSIBLE FOR ALL WORK MATERIALS AND LABORER'S CONDITIONS, AND DIMENSIONS AT THE JOB SITE.

B. ALL EQUIPMENT AND MATERIALS SHALL BE AS SPECIFIED OR APPROVED FOR BY THE ENGINEER ARCHITECT.

C. THE SPRINKLER HEADS SHALL BE LOCATED IN A SYMMETRICAL PATTERN WITH THE SPRINKLER HEADS NO CLOSER THAN 6" TO ANY GULLING GRID.

D. ALL SPRINKLER SYSTEM VALVES SHALL BE ELECTRONICALLY SUPERVISED.

E. ACCEPTANCE AND HYDROSTATIC TESTS TO BE PERFORMED IN ACCORDANCE WITH SECTION 64.01 OF THE NFPA 13 STANDARD.

MISCELLANEOUS

A. DO NOT SCALE THIS DRAWING FOR EXACT DIMENSIONS. VERIFY ALL FIGURES, CONDITIONS, AND DIMENSIONS AT THE JOB SITE.

B. THE SPRINKLER PLANS ARE INTENDED TO BE DIAGNOSTIC. THEY ARE NOT INTENDED TO SHOW EVERY ITEM IN ITS EXACT LOCATION. GUARANTEE.

C. MATERIALS, EQUIPMENT AND INSTALLATION SHALL BE GUARANTEED FOR APERIOD OF 12 MONTHS FROM THE DATE OF COMPLETION. THE CONTRACTOR SHALL CORRECTED AT THE SPRINKLER CONTRACTOR'S EXPENSE.

SYMBOLS

○ = INDICATES FINISH FLOOR UP TO CENTERLINE OF PIPE

● = INDICATES BOTTOM OF DECK DOWN TO CENTERLINE OF PIPE

▽ = INDICATES VERTICAL PIPE DOWN

○ = INDICATES VERTICAL PIPE UP

○ = INDICATES HYDRALIC REFERENCE POINTS

ALL HANGERS AND HANGER COMPONENTS TO BE INSTALLED AND COMPLY WITH NFPA # 13 GENERAL SPRINKLER SYSTEM DATA

General Notes

- All Pipe Hangers are to be Field Installed Prior to Protection and Insulation by Sprinkler Contractor.
- All Dimensions Shown are Center to Center.
- High Temperature Heads are to be Field Located Where Required.
- All Pipes and Hangers are to be Installed per NFPA #13.
- Hangers are to be U.L. Listed and F.M. Approved.

Denali Fire Protection, Inc. Design Installation Service
78 Roller Rink Road
Dunsmuir, Maine 04270
(207) 539-4266 FAX (207) 539-6544

Scale 1/8"=1'-0"

Contractor: DENALI FIRE PROTECTION, INC.
78 ROLLER RINK ROAD
OXFORD, MAINE 04270

W.B. MASON
106 PINE TREE INDUSTRIAL PARKWAY
PORTLAND, MAINE

106 PINE TREE INDUSTRIAL PARKWAY
PORTLAND, MAINE 04270
(207) 539-4266 FAX (207) 539-6544

Scale 1/8"=1'-0"

DATE: 01/26/10

APPROVED BY: [Signature]

Job: W.B. MASON
106 PINE TREE INDUSTRIAL PARKWAY
PORTLAND, MAINE

Revision: [Blank]

DATE: 01/26/10

APPROVED BY: [Signature]

Job: W.B. MASON
106 PINE TREE INDUSTRIAL PARKWAY
PORTLAND, MAINE

Revision: [Blank]

DATE: 01/26/10

APPROVED BY: [Signature]

Job: W.B. MASON
106 PINE TREE INDUSTRIAL PARKWAY
PORTLAND, MAINE

Revision: [Blank]

DATE: 01/26/10

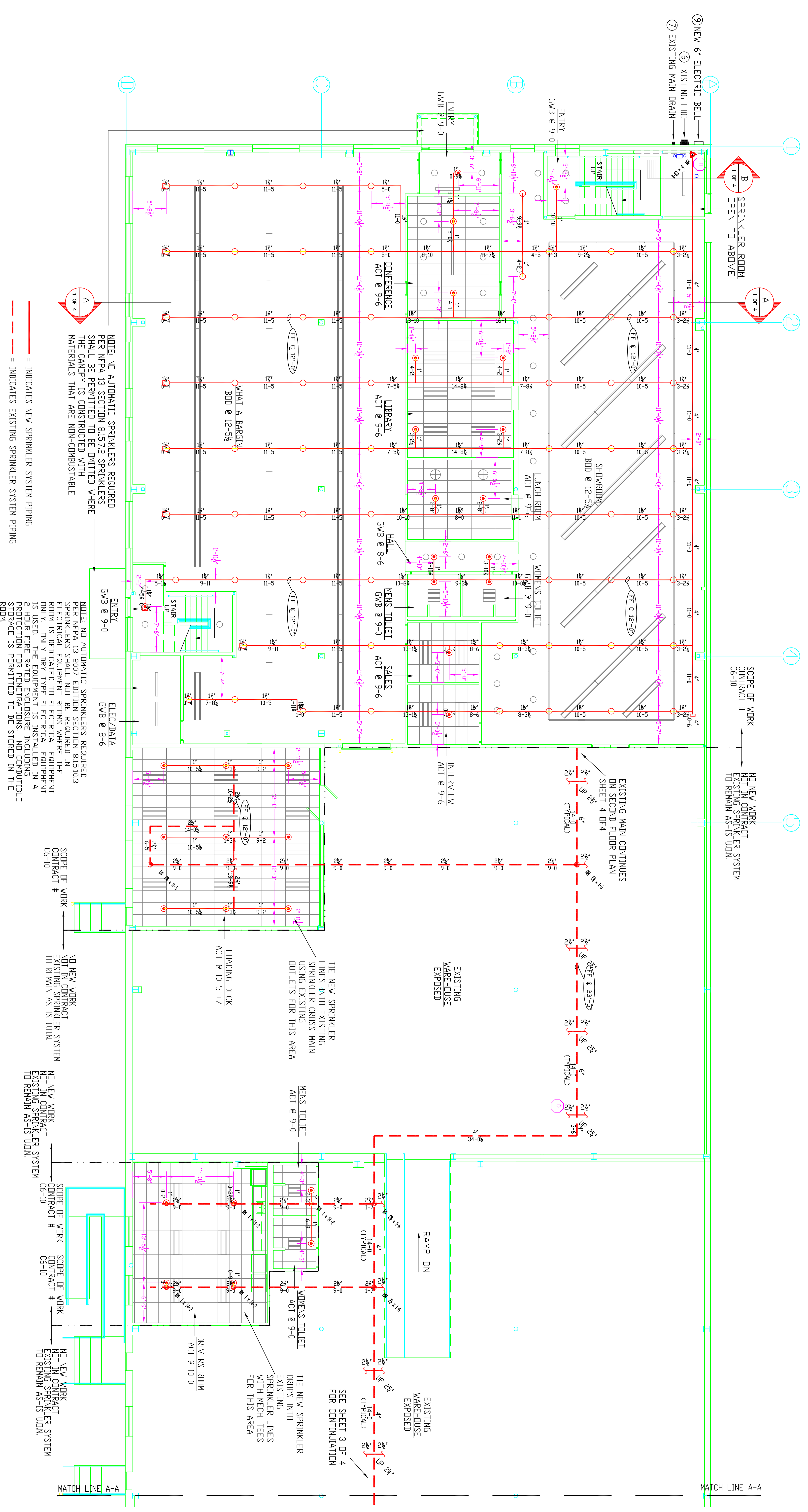
APPROVED BY: [Signature]

Job: W.B. MASON
106 PINE TREE INDUSTRIAL PARKWAY
PORTLAND, MAINE

Revision: [Blank]

DATE: 01/26/10

APPROVED BY: [Signature]



--- = INDICATES NEW SPRINKLER SYSTEM PIPING
 - - - - - = INDICATES EXISTING SPRINKLER SYSTEM PIPING

NOTE: NO AUTOMATIC SPRINKLERS REQUIRED PER NFPA 13 SECTION 8.12.2 SPRINKLERS SHALL NOT BE REQUIRED IN THE ROOMS LISTED WHERE THE MATERIALS THAT ARE NON-COMBUSTIBLE.

NOTE: NO AUTOMATIC SPRINKLERS REQUIRED PER NFPA 13 SECTION 8.12.2 SPRINKLERS SHALL NOT BE REQUIRED IN THE ROOMS LISTED WHERE THE MATERIALS THAT ARE NON-COMBUSTIBLE.

NOTE: NO AUTOMATIC SPRINKLERS REQUIRED PER NFPA 13 SECTION 8.12.2 SPRINKLERS SHALL NOT BE REQUIRED IN THE ROOMS LISTED WHERE THE MATERIALS THAT ARE NON-COMBUSTIBLE.

FIRST FLOOR
 FINISH FLOOR ELEVATION: 100'-0"
 AREA PROTECTED FOR EXISTING SYSTEM: 42,048' SQ. FT.
 AREA PROTECTED FOR AREAS OF ADDITION & RENOVATION ONLY: 18,064' SQ. FT.

VICTAULIC MODEL V2704 OR BRASS UPRIGHTS
 K-FACTOR = 5.6
 SIN# V2704
 SYMBOL = ○

VICTAULIC MODEL V2708 OR SEMI-RECESSED WHITE PENDENT
 K-FACTOR = 5.6
 SIN# V2708
 SYMBOL = ●

VICTAULIC MODEL V2710 OR HORIZONTAL SIDEWALL
 K-FACTOR = 5.6
 SIN# V2710
 SYMBOL = ▽

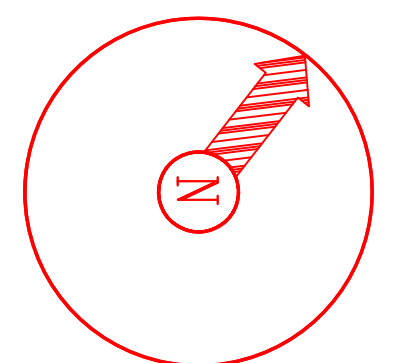
General Notes

- All Pipe Hangers are to be Field Installed Prior to Fabrication
- All Dimensions shown are Center to Center.
- High Temperature Heads are to be Field Located Where Required.
- All Pipes and Hangers are to be Installed per NFPA #13.
- Hangers are to be UL Listed and F.M. Approved.

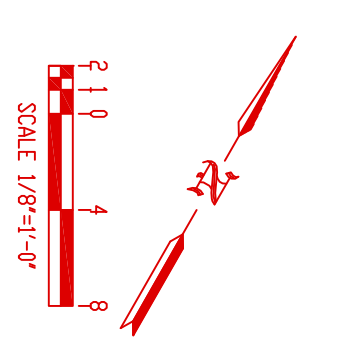
Symbol	Description	Total This Sheet	Number of Sprinklers	Drawing Title
(+)	Horizontal Sprinkler			PP-2 FLOOR PLAN
(-)	Pipe Above Finished Floor			
(+/-)	Box Above Finished Floor			
(+/-)	Box Above Finished Floor			Contract No.
(+/-)	Box Above Finished Floor			Drawn By
(+/-)	Box Above Finished Floor			Scale
(+/-)	Box Above Finished Floor			Date
(+/-)	Box Above Finished Floor			Approval By

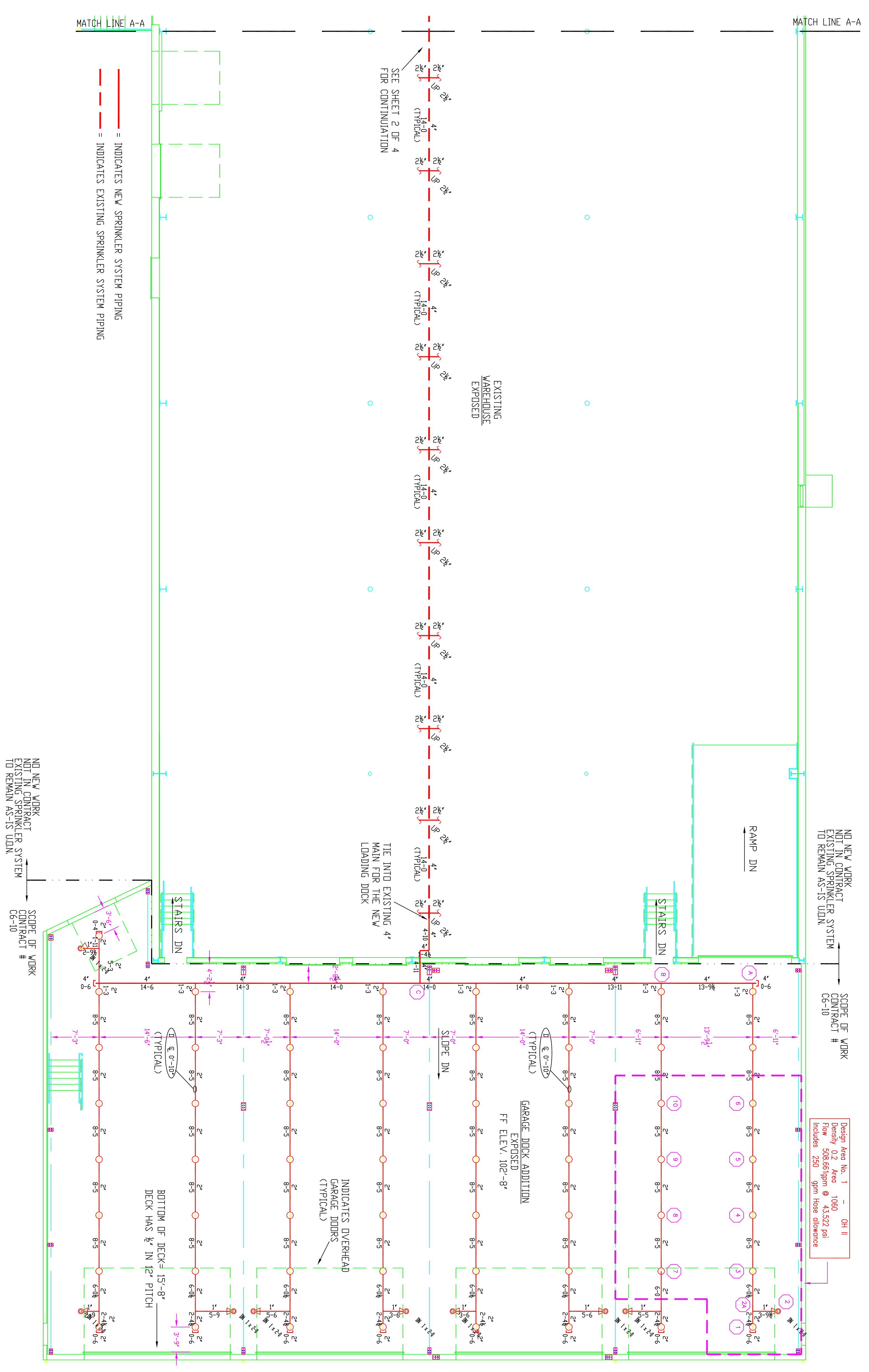
Job: W.B. MASON
 106 PINE TREE INDUSTRIAL PARKWAY
 PORTLAND, MAINE

Contractor: DENALI FIRE PROTECTION, INC.
 78 ROLLER RINK ROAD
 OXFORD, MAINE 04270



DENALI
 FIRE PROTECTION, INC. SERVICE
 DESIGN INSTALLATION
 78 ROLLER RINK ROAD
 OXFORD, MAINE 04270
 (207) 539-4226 FAX (207) 539-8544





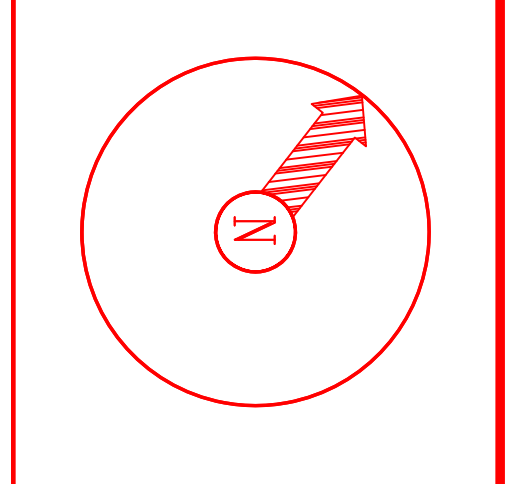
FIRST FLOOR
 FINISH FLOOR ELEVATION: 100'-0"
 EXISTING SPRINKLER SYSTEM, 420000', SQ. FT.
 AREA PROTECTED FOR AREAS OF ADDITION & RENOVATION DNL V. 18064' SQ. FT.

- VICTAULIC**
 MODEL "V2704" OR
 BRASS UPRIGHTS
- VICTAULIC**
 MODEL "V2708" OR
 SEMI-RECESSED
 WHITE PENDENT
- VICTAULIC**
 MODEL "V2710" OR
 HORIZONTAL
 SIDEWALL
- K-F-FACTOR = 5.6
 SIN# "V2704"
 SYMBOL = ○
- K-F-FACTOR = 5.6
 SIN# "V2708"
 SYMBOL = ◐
- K-F-FACTOR = 5.6
 SIN# "V2710"
 SYMBOL = ◑

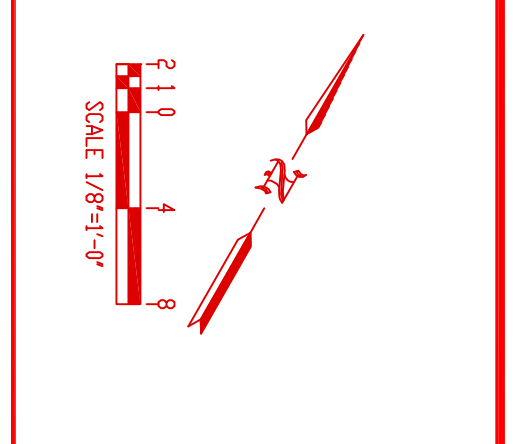
- General Notes**
1. All Pipe Installations are to be Field Measured Prior to Fabrication and Installation by Sprinkler Contractor.
 2. All Dimensions Shown are Center to Center.
 3. High Temperature Heads are to be Field Located Where Required.
 4. All Pipes and Hangers are to be Installed per NFPA #13.
 5. Hangers are to be U.L. Listed and P.M. Approved.

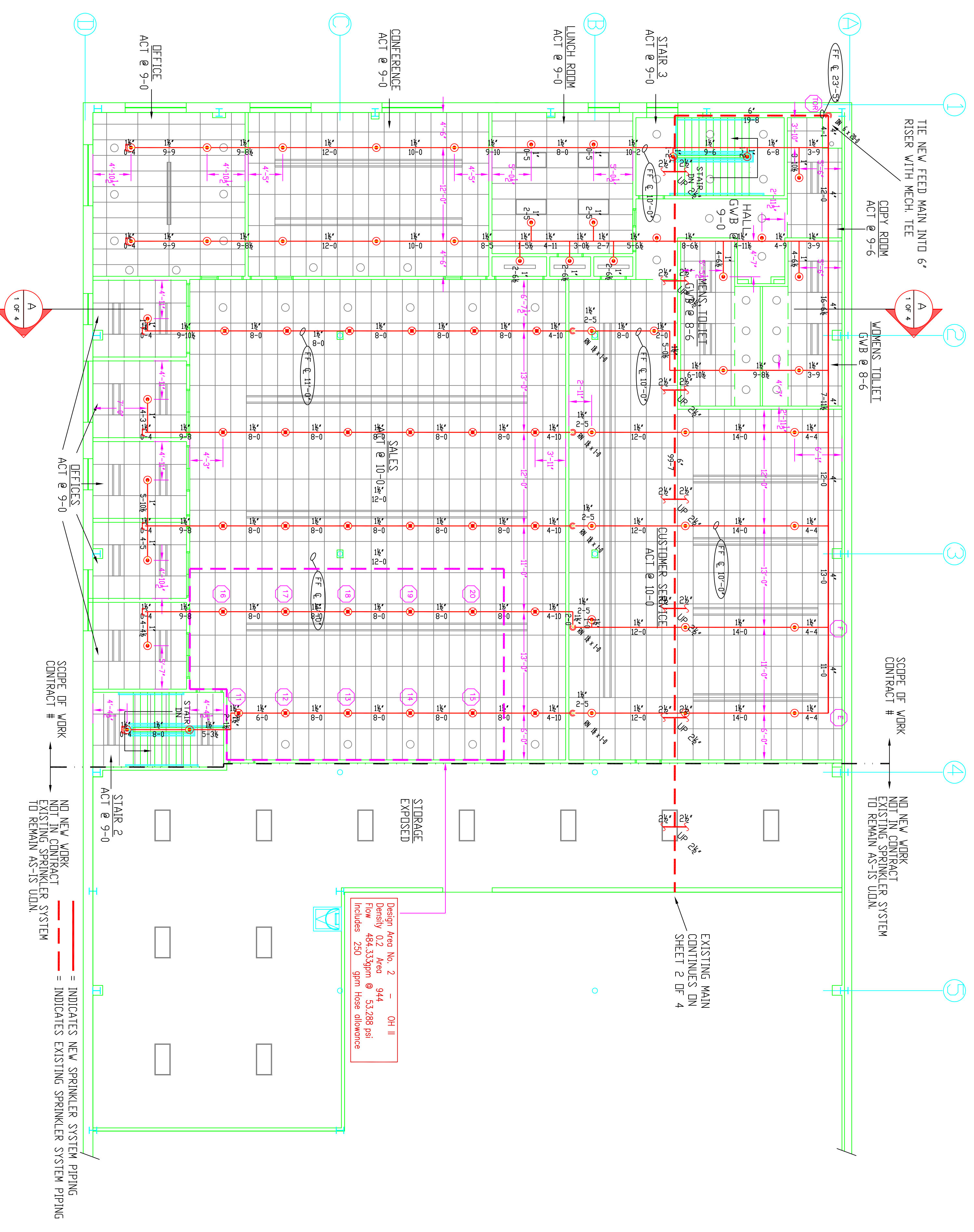
Symbol	Description	Total This Sheet	Description	Total This Job
(1-1/2")	Horizontal Hangers			
(1-1/2")	Pipe Above Top of Steel			
(1-1/2")	Box Above Finished Floor			
(1-1/2")	Box Above Top of Steel			
(1-1/2")	Ceiling Hanger			
(1-1/2")	Devices Hanger Location			
(1-1/2")	Rise Up or Down			

Design Area No. 1 - 01 II	Density 0.2 Area 1000 1520 gal	Flow 306.00 gpm @ 4.2522 psi	Pressure 250 psi
Drawing Title: FP-3 FLOOR PLAN			
Contract No. CB-10	Drawn By: TMB	Revisions:	Date:
Scale: 1/8" = 1'-0"	Date: 01/28/10	Approval By: SMK/PPB	
Contractor: W.B. MASON 106 PINE TREE INDUSTRIAL PARKWAY PORTLAND, MAINE	Job:		
Designer: DENALI FIRE PROTECTION, INC. 78 ROLLER RINK ROAD OXFORD, MAINE 04270	Contractor:		



DENALI
 FIRE PROTECTION, INC.
 DESIGN INSTALLATION SERVICE
 78 ROLLER RINK ROAD
 OXFORD, MAINE 04270
 (207) 539-4226 FAX (207) 539-8544





SECOND FLOOR
 FINISH FLOOR ELEVATION: 112'-9 1/2"
 AREA PROTECTED FOR NEW SECOND FLOOR: 7,964' SQ. FT.

VICTAULIC MODEL: V2708* OR SEMI-RECESSED WHITE PENDENT
 VICTAULIC MODEL: V2708* OR EXTENDED WHITE PENDENT

K-FACTOR = 5.6
 SIN# V2708*
 SYMBOL =

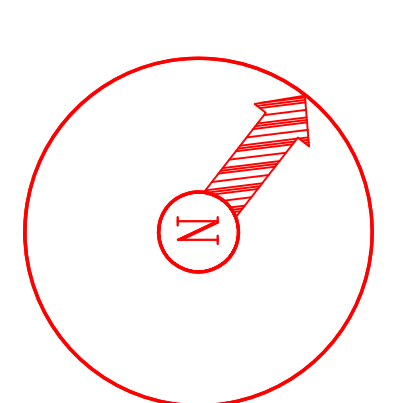
K-FACTOR = 5.6
 SIN# V2708*
 SYMBOL =

NO NEW WORK FOR CONTRACTOR TO REMAIN AS-IS UNLESS INDICATED OTHERWISE

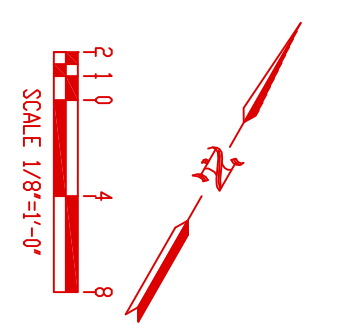
SCOPE OF WORK
 CONTRACT #

NO NEW WORK FOR CONTRACTOR TO REMAIN AS-IS UNLESS INDICATED OTHERWISE

Design Area No. 2 - OH II
 Density 0.2 Area 944
 Flow 484.55 GPM @ 152.888 psi
 Includes 250' 3/4" hose allowance



DENALI
 FIRE PROTECTION, INC. SERVICE
 78 ROLLER RINK ROAD
 OXFORD MAINE 04270
 (207) 539-4266 FAX (207) 539-8544



- General Notes**
- All Pipe Hangers are to be Field Measured Prior to Production and Installation by Sprinkler Contractor.
 - All Dimensions Shown are Center to Center.
 - High Temperature Heads are to be Field Labeled Where Required.
 - All Pipes and Hangers are to be Installed per NFPA #13.
 - Hangers are to be UL Listed and F.M. Approved.

Symbol	Description	Total This Sheet	Number of Sprinklers
	Standard Sprinkler		Total This Job
	Extended Sprinkler		
	Semi-Recessed Sprinkler		
	White Pendant Sprinkler		
	White Pendent Sprinkler		
	Other		

Drawing Title	Contract No.	Scale	Date	Approval By
FP-4 FLOOR PLAN	CB-10	1/8" = 1'-0"	01/28/10	SMK/PPB

Job:

Contractor:

W.B. MASON
 106 PINE TREE INDUSTRIAL PARKWAY
 PORTLAND, MAINE
 DENALI FIRE PROTECTION, INC.
 78 ROLLER RINK ROAD
 OXFORD, MAINE 04270