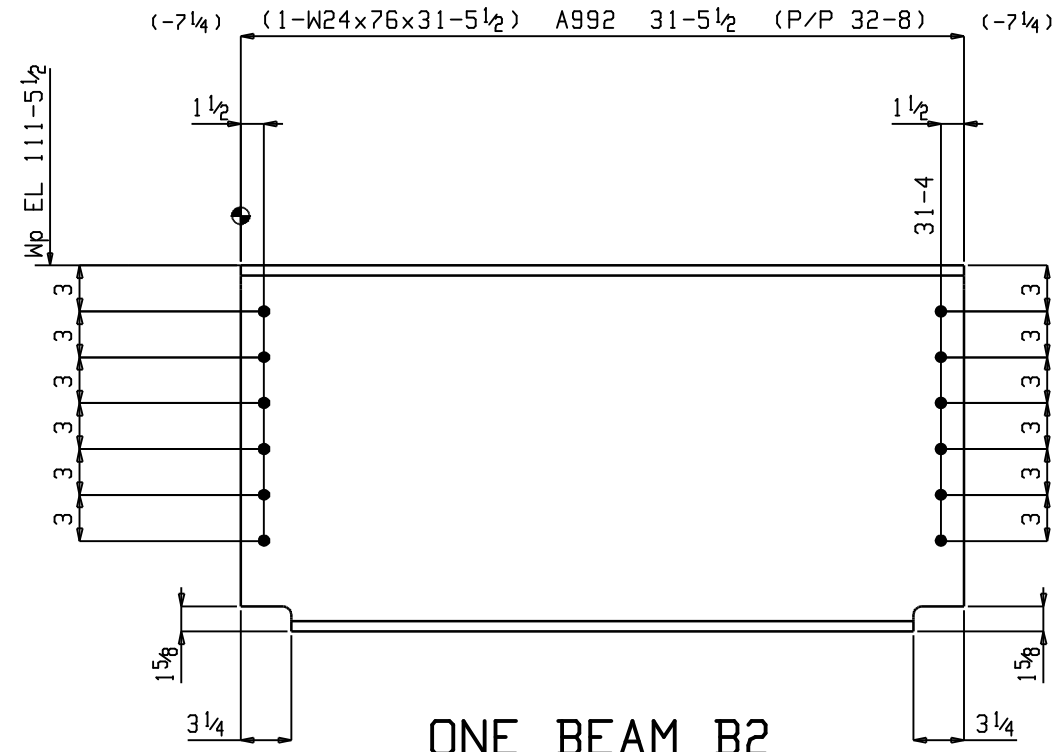


ONE BEAM B1

W	23 15/16 x 7/16
F	9 x 1 1/16
K	1 9/16 x 1 1/8



ONE BEAM B2

W	23 15/16 x 7/16
F	9 x 1 1/16
K	1 9/16 x 1 1/8

2 REVISIED B1 2-27-2010

1 REVISIED 1-28-2010

Feb 27 2010 02:28:13 PM

QTY	PC	BILL OF MATERIAL		SEQ	ADV	STL	ONE	B2	BEAM	ONE	B2	BEAM	ONE	B2	BEAM
TOTAL	MARK	DESCRIPTION	LENGTH	SEQ	QTY	ABM#	GRADE	REMARKS	1	B2	W24x76	31	5 1/2	A992	
ONE	B1	BEAM		1	1										
1	B1	W24x76	29 5 3/4				A992								

Total weight : 4631

REVISIONS

HOLDS: 13/16 UNO STL GR: A36 UNO JOB #:

DRMN BY: DLS DTL DATE: 12-19-2009

CHK: MRS CHK DATE: 2-12-2010

Surface Prep: SSFC-SP3 WELD: E70XX-LH

PAINT: AS PER SPEC ER70S-X

METRO WEST STEEL

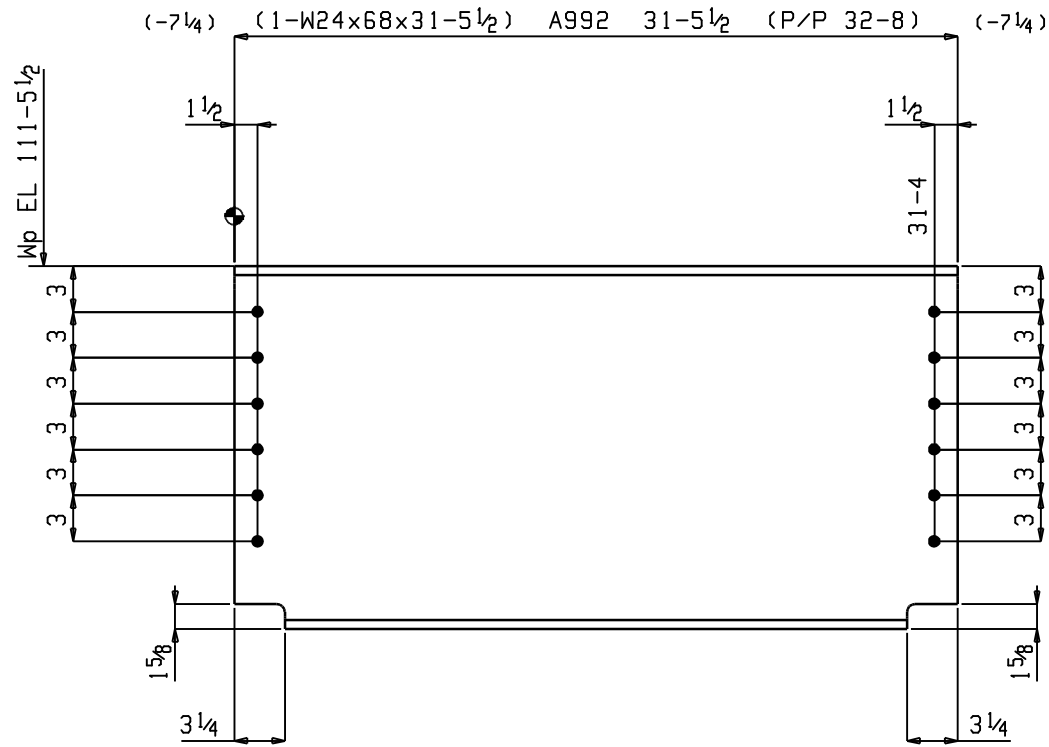
WRENTHAM, MA

W. B. MASON

PORTLAND MAINE

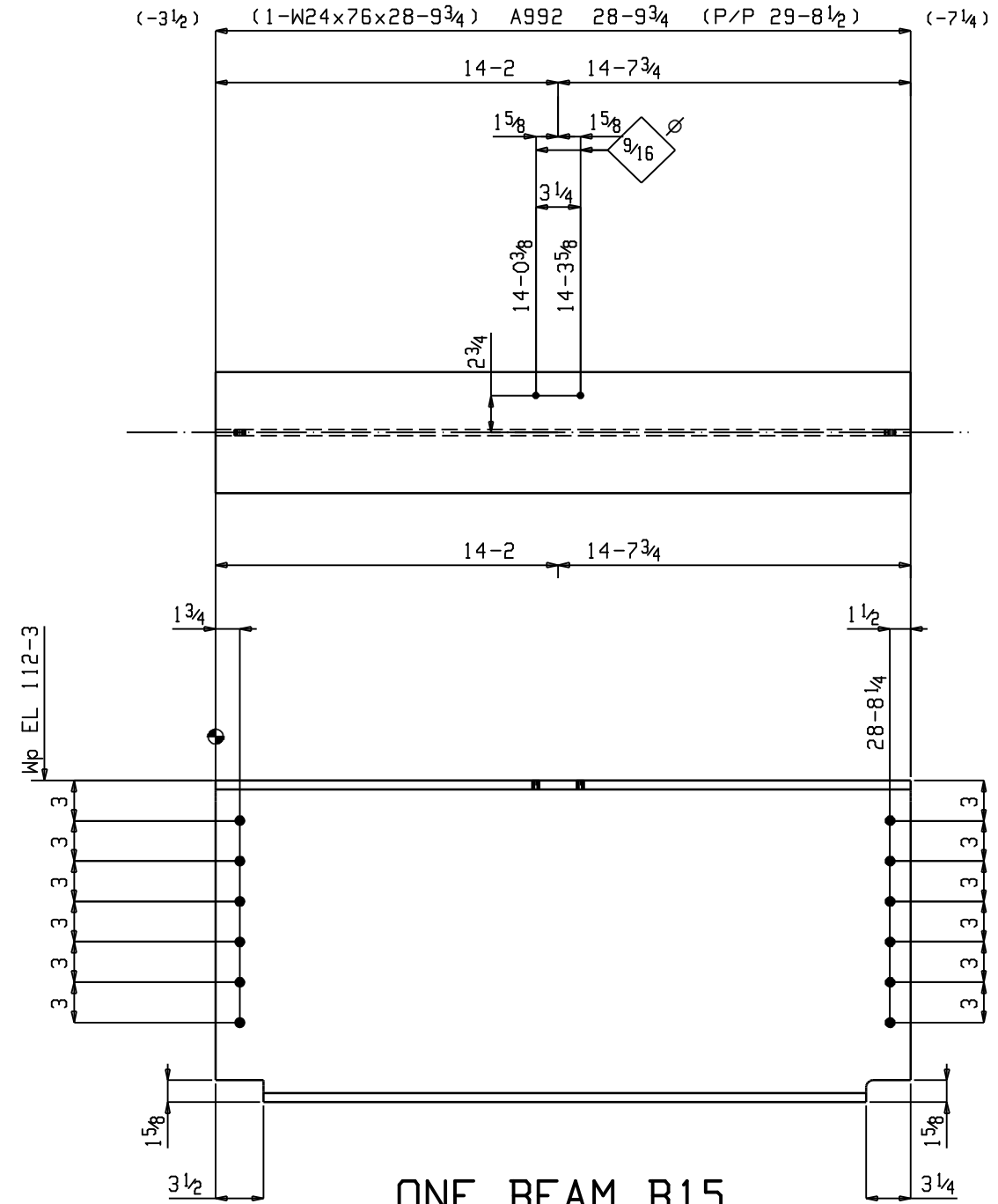
SHT:

B1, 2



ONE BEAM B14

W	23 3/4 x 7/16
F	8 15/16 x 9/16
K	1 1/2 x 1 1/8



ONE BEAM B15

W	23 15/16 x 7/16
F	9 x 1 1/16
K	1 9/16 x 1 1/8

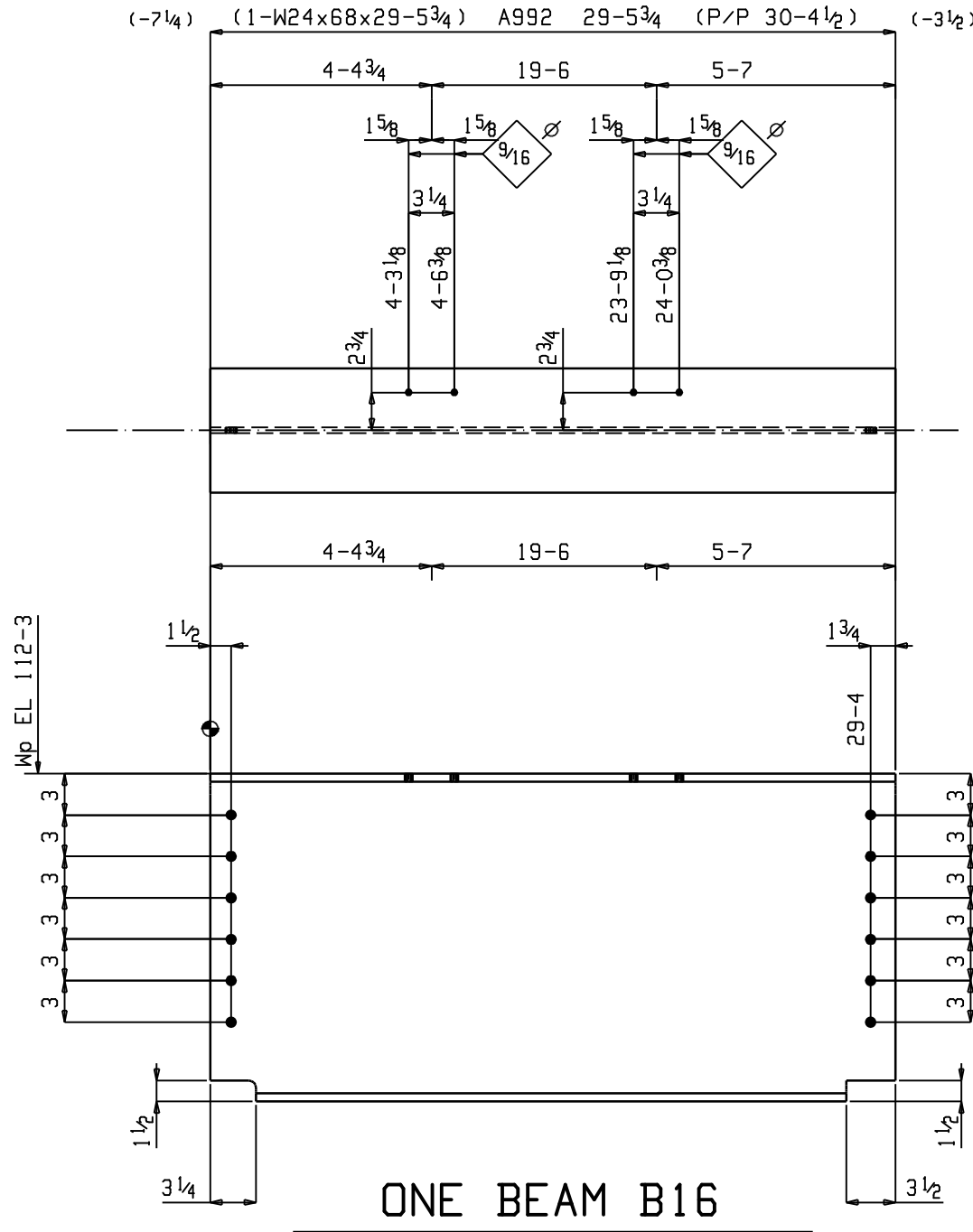
Feb 27 2010 02:28:16 PM

QTY	PC	BILL OF MATERIAL				SEQ	ADV	STL	ONE	B15	BEAM	ONE	B15	BEAM	ONE	B15	BEAM
TOTAL	MARK	DESCRIPTION	LENGTH	SEQ	QTY	ABM#	GRADE	REMARKS	1	B15	W24x76	28	9 3/4	A992			
ONE	B14	BEAM		1	1												
1	B14	W24x68	31 5 1/2				A992										

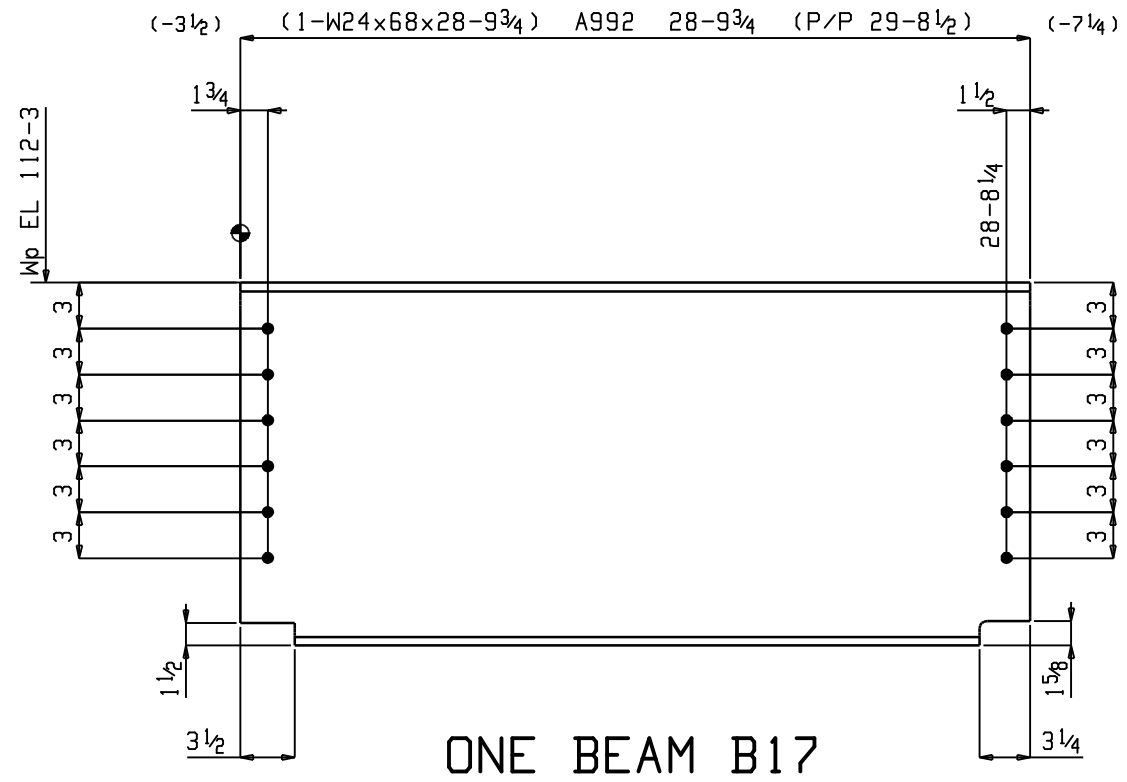
- 1 REVISED 1-28-2010
- 2 REVISED B15 2-27-2010

Total weight : 4329

HOLDS: 13/16 UNO		STL GR: A36 UNO	JOB #:
DRWN BY: DLS		DTL DATE: 12-19-2009	
CHK: MRS		CHK DATE: 2-12-2010	
Surface Prep: SSPC-SP3		WELD: E70XX-LH	
PAINT: AS PER SPEC		ER70S-X	
REVISIONS			
METRO WEST STEEL WRENTHAM, MA			
W. B. MASON PORTLAND MAINE			
JOB:			
SHT: B14, 15			



W	23 3/4 x 7 1/16
F	8 15/16 x 9 1/16
K	1 1/2 x 1 1/8



W	23 3/4 x 7 1/16
F	8 15/16 x 9 1/16
K	1 1/2 x 1 1/8

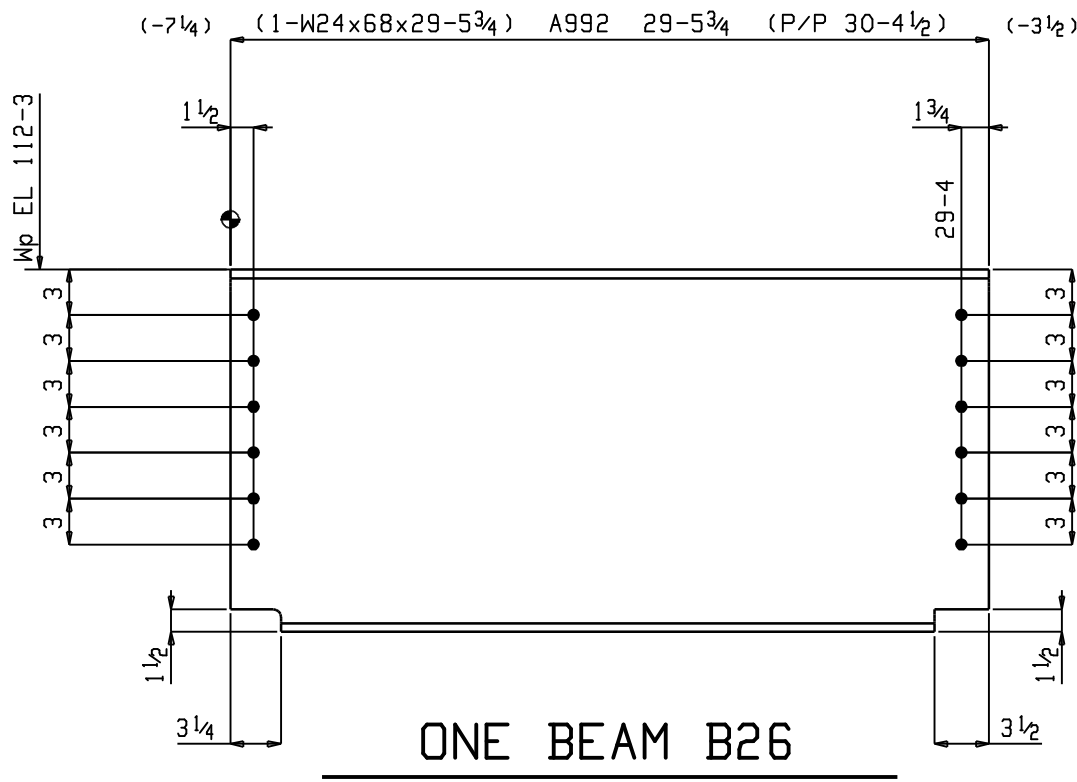
- 2 REVISIED B16,17 2-27-2010
- 1 REVISIED 1-28-2010

Feb 27 2010 02:28:19 PM

QTY	PC	BILL OF MATERIAL		SEQ	ADV	STL	ONE	B17	BEAM				
TOTAL	MARK	DESCRIPTION	LENGTH	SEQ	QTY	ABM#	GRADE	REMARKS	1	B17	W24x68	28	9 3/4
ONE	B16	BEAM		1	1								
1	B16	W24x68	29 5 3/4				A992						

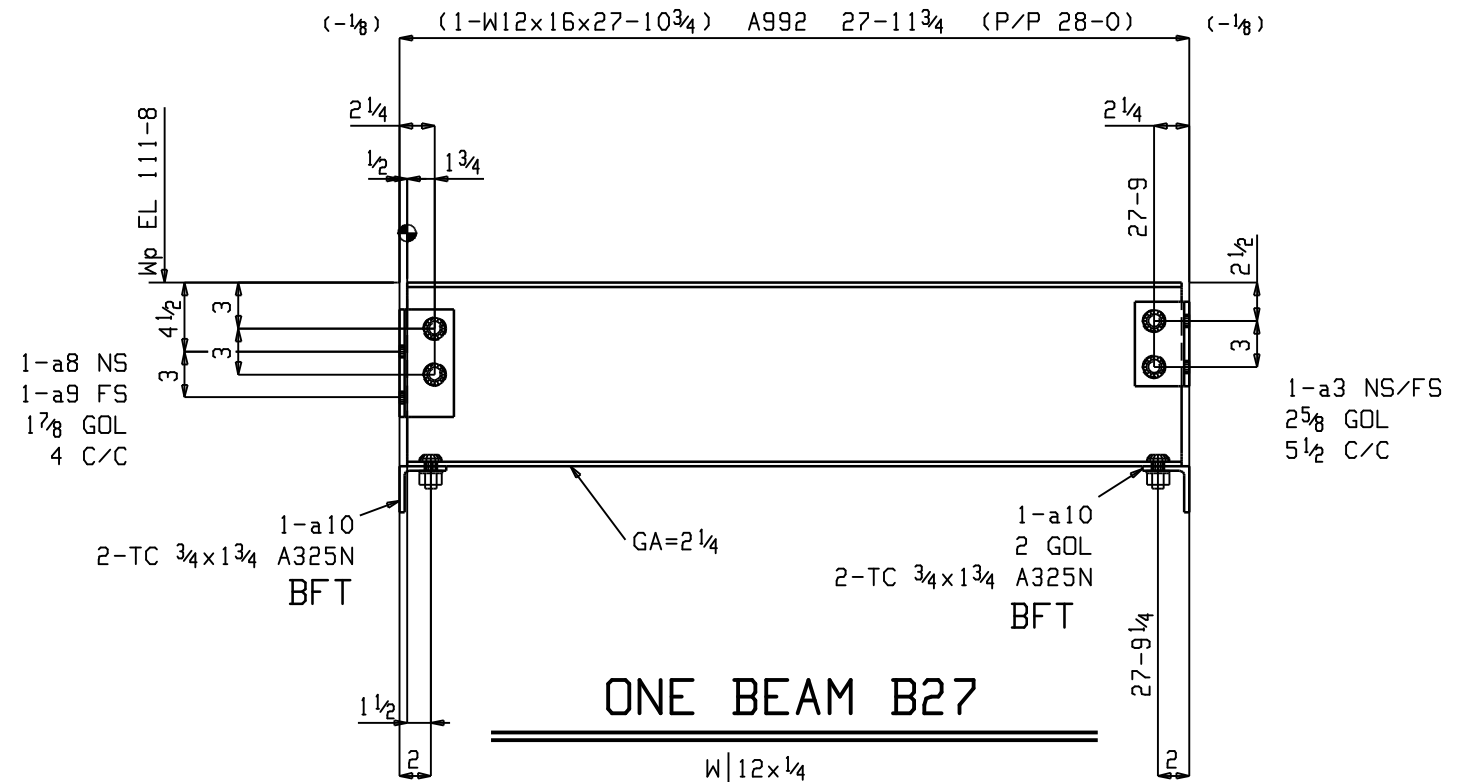
Total weight : 3964

METRO WEST STEEL WRENTHAM, MA W. B. MASON PORTLAND MAINE	Holes: 13/16 UNF		STL GR: A36 UNF	JOB #:	REVISIONS
	DRWN BY: DLS		DTL DATE: 12-19-2009		
	CHK: MRS		CHK DATE: 2-12-2010		
	Surface Prep: SSFC-SP3		WELD: E70XX-LH		
PAINT: AS PER SPEC					
SHT: B16, 17					



ONE BEAM B26

W	23 3/4 x 7 1/16
F	8 15/16 x 9 1/16
K	1 1/2 x 1 1/8



ONE BEAM B27

W	12 x 1/4
F	4 x 1/4
K	13 1/16 x 1 1/16

SHOP BOLTS (Unless Noted):
4-TC 3/4 x 2 A325N

- 2 REVISD B26 2-27-2010
- 1 REVISD 1-28-2010

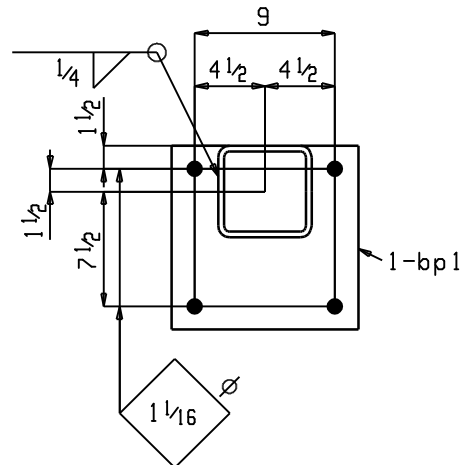
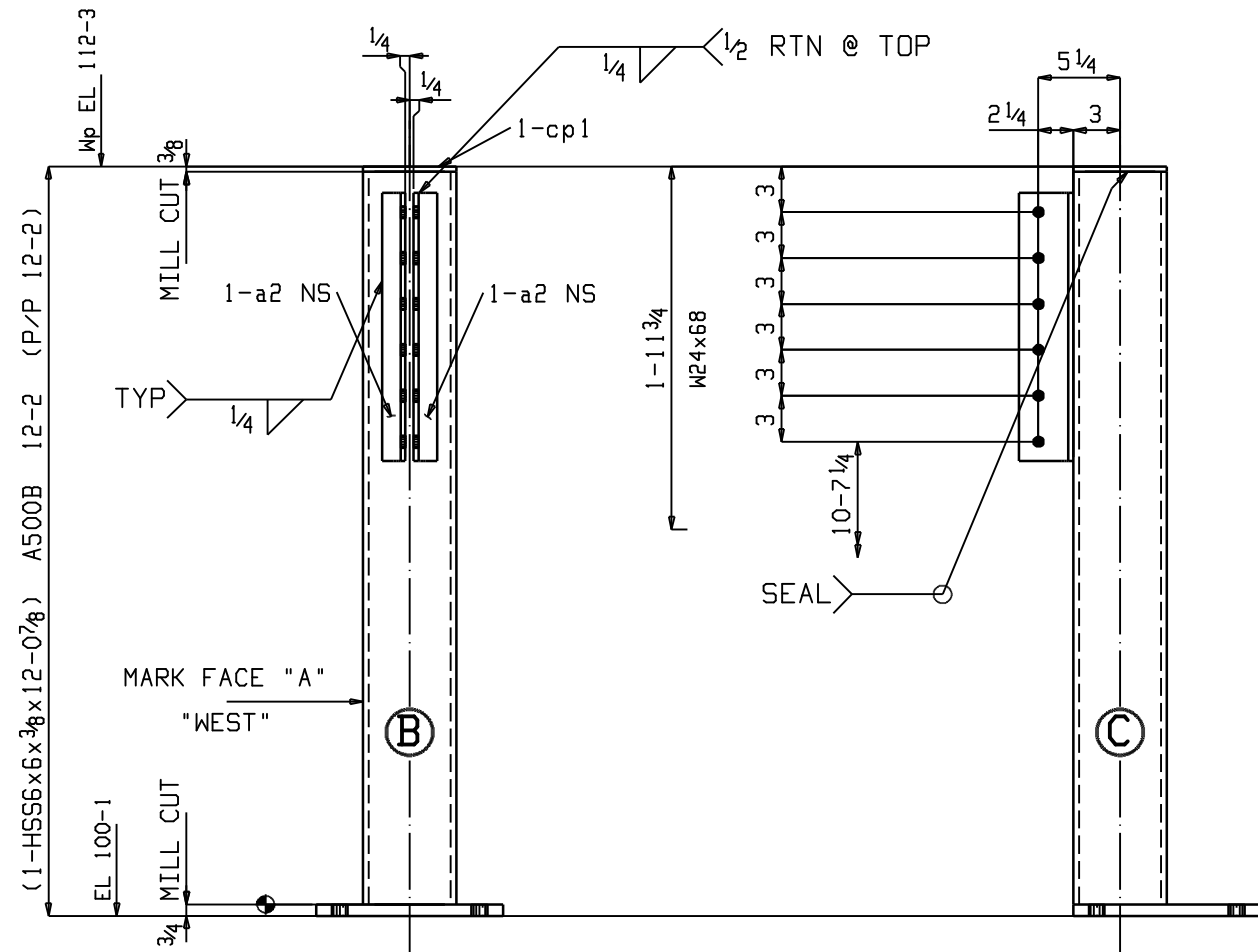
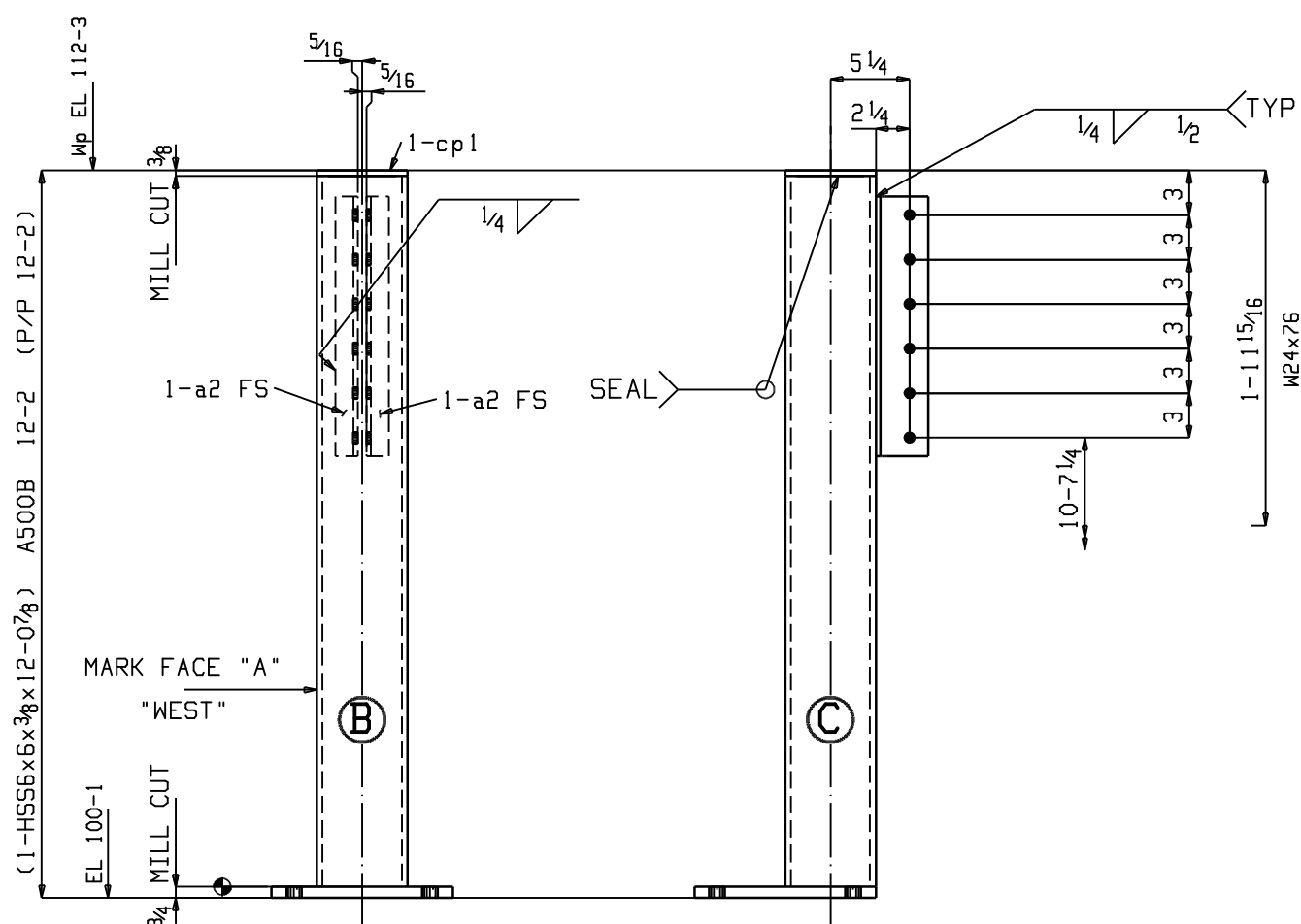
Feb 27 2010 02:28:21 PM

QTY	PC	BILL OF MATERIAL		SEQ	ADV	STL			2	a3	L3 1/2 x 3 1/2 x 5 1/16	0	5 1/2		A36
TOTAL	MARK	DESCRIPTION	LENGTH	SEQ	QTY	ABM#	GRADE	REMARKS	1	a8	L3 1/2 x 3 x 5 1/16	0	7		A36
ONE	B26	BEAM		1	1				1	a9	L3 1/2 x 3 x 5 1/16	0	7		A36
1	B26	W24x68	29 5 3/4				A992		2	a10	L3 x 3 x 5 1/16	0	5		A36
									4		TC 3/4 Dia A325N	0	2		1HD WASH
									4		TC 3/4 Dia A325N	0	1 3/4		1HD WASH
ONE	B27	BEAM		1	1										
1	B27	W12x16	27 10 3/4				A992								

Total weight : 2475

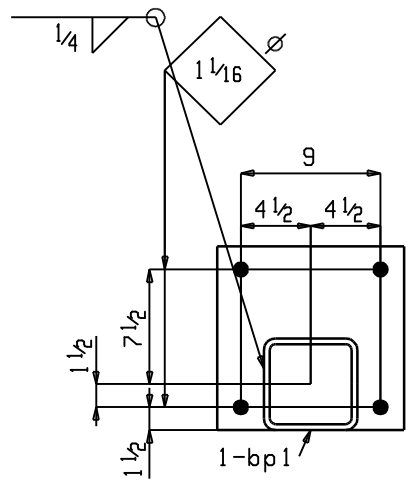
HOLE: 13/16 UNO		STL GR: A36 UNO	JOB #:	REVISIONS	
DRWN BY: DLS		DTL DATE: 12-19-2009			
CHK: MRS		CHK DATE: 2-12-2010			
Surface Prep: SSFC-SP3		WELD: E70XX-LH			
PAINT: AS PER SPEC		ER70S-X			
<p>METRO WEST STEEL WRENTHAM, MA</p> <p>W. B. MASON PORTLAND MAINE</p>					
SHT: B26, 27					

Feb 27 2010 02:28:24 PM



ONE COLUMN C8

AT GRID:
2 & C.8NEW



3 COLUMNS C9

AT GRID:
2 & A.2NEW
3 & A.2NEW
4 & A.2NEW

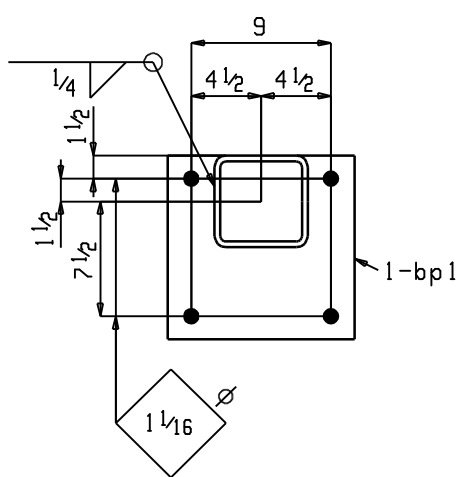
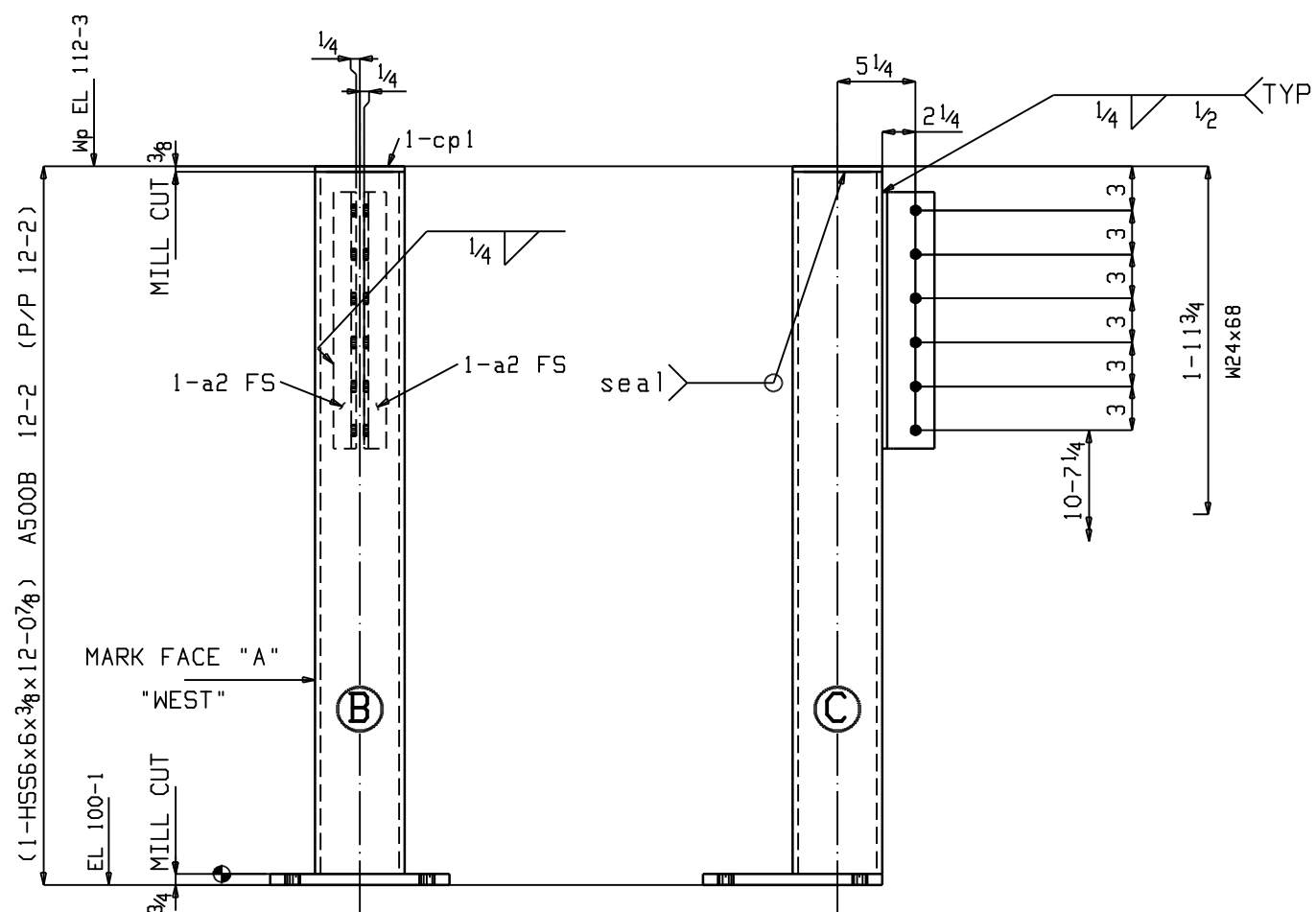
- 2 REVISD 2-27-2010
- 1 REVISD 1-28-2010

QTY	PC	BILL OF MATERIAL		SEQ	ADV	STL									
TOTAL	MARK	DESCRIPTION	LENGTH	SEQ	QTY	ABM#	GRADE	REMARKS							
ONE	C8	COLUMN		1	1				3	C9	COLUMN		1	3	
1	C8	HSS6x6x3/8	12 0 7/8				A500B	M2E	3	C9	HSS6x6x3/8	12 0 7/8			A500B M2E
2	a2	L3 1/2 x 1 1/2 x 5/16	1 5 1/2				A36		6	a2	L3 1/2 x 1 1/2 x 5/16	1 5 1/2			A36
1	bp1	PL 3/4 x 12	1 0				A36		3	bp1	PL 3/4 x 12	1 0			A36
1	cp1	PL 3/8 x 6	0 6				A36		3	cp1	PL 3/8 x 6	0 6			A36

Total weight : 1542

METRO WEST STEEL		WRENTHAM, MA		W. B. MASON		PORTLAND MAINE	
Holes: 13/16 UNF		STL GR: A36 UNF	JOB #:	REVISIONS			
DRWN BY: DLS		DTL DATE: 12-19-2009					
CHK: MRS		CHK DATE: 2-12-2010					
Surface Prep: SSPC-SP3		WELD: E70XX-LH					
PAINT: AS PER SPEC		ER70S-X					
SHT:		C8, 9					

Feb 27 2010 02:28:27 PM



ONE COLUMN C10

AT GRID:
3 & C.8NEW

2 REVISIED 2-27-2010
1 REVISIED 1-28-2010

QTY	PC	BILL OF MATERIAL		SEQ	ADV	STL												
TOTAL	MARK	DESCRIPTION	LENGTH	SEQ	QTY	ABM#	GRADE	REMARKS										
ONE	C10	COLUMN		1	1													
1	C10	HSS6x6x3/8	12 0 7/8				A500B	M2E										
2	a2	L3 1/2 x 1 1/2 x 5/16	1 5 1/2				A36											
1	bp1	PL 3/4 x 12	1 0				A36											
1	cp1	PL 3/8 x 6	0 6				A36											

Total weight : 386

HILES: 13/16 UNO		STL GR: A36 UNO	JOB #:	REVISIONS	
DRMN BY: DLS		DTL DATE: 12-19-2009			
CHK: MRS		CHK DATE: 2-12-2010			
Surface Prep: SSFC-SP3		WELD: E70XX-LH			
PAINT: AS PER SPEC		ER70S-X			
METRO WEST STEEL WRENTHAM, MA			JOB: C10		
W.B. MASON PORTLAND MAINE					