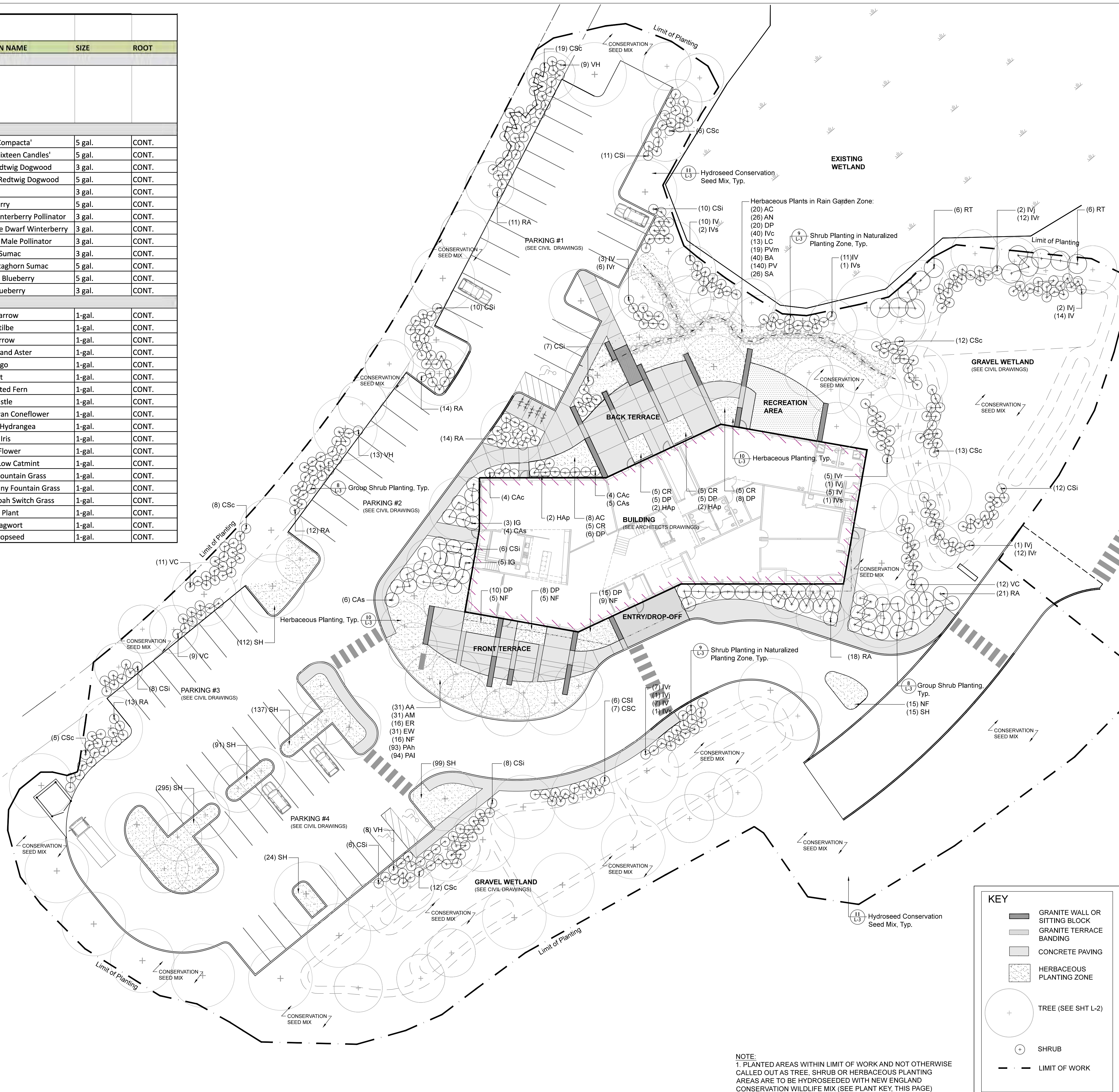


PATRONS OXFORD OFFICES - PLANTING SCHEDULE - SHRUBS & HERBACEOUS PLANTS

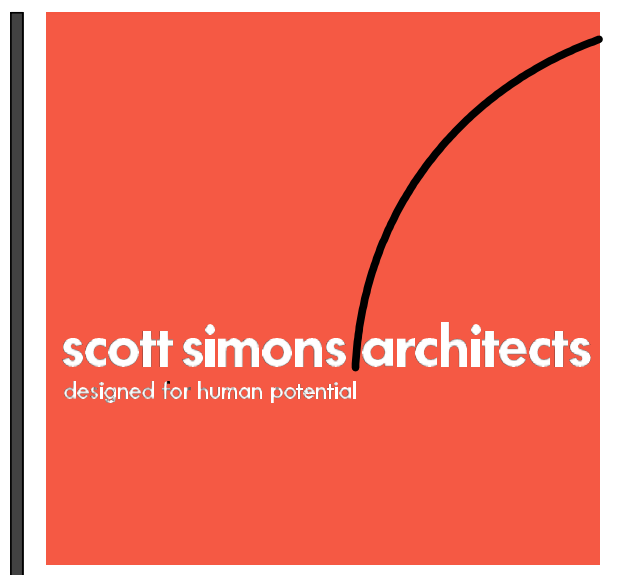
TYPE	QUANTITY	KEY	BOTANICAL NAME	COMMON NAME	SIZE	ROOT
Seed Mix						
			<i>New England Conservation Wildlife Mix.</i> Application rate: 25lbs/acre (apply 2x in first year: spring and fall). Source: New England Wetland Plants, Inc. / 820 West St. Amherst, MA 01002 / t. (413) 548-8000			
Shrubs						
	8	CAC	Clethra alnifolia 'Compacta'	Clethra 'Compacta'	5 gal.	CONT.
	15	CAs	Clethra alnifolia 'Sixteen Candles'	Clethra 'Sixteen Candles'	5 gal.	CONT.
	82	CSc	Cornus sericea 'Isanti'	Dwarf Redtwig Dogwood	3 gal.	CONT.
	84	CSi	Cornus sericea 'Cardinal'	Cardinal Redtwig Dogwood	5 gal.	CONT.
	8	IG	Ilex glabra	Inkberry	3 gal.	CONT.
	50	IV	Ilex verticillata	Winterberry	5 gal.	CONT.
	7	IVj	Ilex verticillata 'Jim Dandy'	Dwarf Winterberry Pollinator	3 gal.	CONT.
	42	IVr	Ilex verticillata 'Red Sprite'	Red Sprite Dwarf Winterberry	3 gal.	CONT.
	5	IVs	Ilex verticillata 'Southern Gentleman'	Standard Male Pollinator	3 gal.	CONT.
	103	RA	Rhus aromatica	Fragrant Sumac	3 gal.	CONT.
	12	RT	Rhus typhina 'Laciniata'	Cutleaf Staghorn Sumac	5 gal.	CONT.
	32	VC	Vaccinium corymbosum	Highbush Blueberry	5 gal.	CONT.
	30	VH	Vaccinium x hybrid	Hybrid Blueberry	3 gal.	CONT.
Perennials & Grasses						
	31	AA	Achillea 'Anthea'	Anthea Yarrow	1-gal.	CONT.
	28	AC	Astilbe chinensis 'Visions in White'	White Astilbe	1-gal.	CONT.
	31	AM	Achillea millefolium sp.	White Yarrow	1-gal.	CONT.
	26	AN	Aster novae-angliae	New England Aster	1-gal.	CONT.
	40	BA	Baptisia australis	False Indigo	1-gal.	CONT.
	20	CR	Cimicifuga racemosa 'Hillside Black Beauty'	Snakeroot	1-gal.	CONT.
	77	DP	Dennstaedtia punctilobula	Hay-Scented Fern	1-gal.	CONT.
	16	ER	Echinops ritro	Globe Thistle	1-gal.	CONT.
	31	EW	Echinacea 'White Swan'	White Swan Coneflower	1-gal.	CONT.
	6	HAp	Hydrangea anomala petiolaris	Climbing Hydrangea	1-gal.	CONT.
	40	IVc	Iris versicolor	Blue Flag Iris	1-gal.	CONT.
	13	LC	Lobelia cardinalis	Cardinal Flower	1-gal.	CONT.
	50	NF	Nepeta x faassenii 'Walkers Low'	Walkers Low Catmint	1-gal.	CONT.
	93	PAH	Pennistemon alopecuroides 'Hameln'	Hameln Fountain Grass	1-gal.	CONT.
	94	PAI	Pennistemon alopecuroides 'Little Bunny'	Little Bunny Fountain Grass	1-gal.	CONT.
	140	PV	Panicum virgatum 'Shenandoah'	Shenandoah Switch Grass	1-gal.	CONT.
	19	PVm	Physostegia virginiana 'Miss Manners'	Obedient Plant	1-gal.	CONT.
	26	SA	Senecio aureus	Golden Ragwort	1-gal.	CONT.
	773	SH	Sporobolus heterolepis	Prairie Dropseed	1-gal.	CONT.

GENERAL PLANTING PLAN NOTES:

- Contractor shall begin maintenance immediately after planting and shall continue until final acceptance. Contractor shall be responsible for all means and methods of watering and maintenance.
- The Landscape contractor shall supply all plant materials in quantities sufficient to complete all plantings shown on this drawing. Clarify any discrepancies with the landscape architect prior to ordering plant material.
- All materials shall conform to the guidelines established by the American Association of Nurserymen.
- All plants shall bear the same relationship to finish grade as the original grades before digging.
- The landscape contractor shall guarantee all plant materials for one(1) full year from date of substantial completion.
- All plant materials are subject to the approval of the landscape architect at the nursery and at the site.
- All areas of the site which have been disturbed and not otherwise developed shall be loamed with a minimum depth of 6" of topsoil and seeded as specified.
- Landscape contractor is encouraged to provide the landscape architect with concerns and/or suggestions with regard to proposed plant material selection prior to placing a purchase order.
- All trees located adjacent to walks and drives shall have 6' of clear height to first branching.
- Contractor shall verify all tree removals with landscape architect prior to start of construction.
- Contractor shall obtain approval for proposed lawn seed mix prior to installation.
- No plant shall be put into the ground before rough grading has been finished and approved by the project landscape architect.
- All plants shall be balled and wrapped or container grown as specified. No container grown stock will be accepted if it is root bound. All root wrapping material made of synthetics or plastics shall be removed at the time of planting.
- With container grown stock, the container shall be removed and the container ball shall be cut through the surface in two vertical locations.
- The location of trees, shrubs and bedlines shall be staked for approval by the landscape architect prior to installation. The contractor shall notify the landscape architect 48 hours prior to required site visit.
- All broad leaf evergreen plants shall be sprayed with an antidesiccant at the beginning of their first winter.
- All plants shall be installed as per details and the contract specifications. The landscape contractor shall refer to the contract specifications for additional requirements.
- All plants and stakes shall be set plumb unless otherwise specified.
- The landscape contractor shall provide loam fill as per the contract specifications.
- All plants shall be watered thoroughly twice during the first 24-hour period after planting. All plants shall then be watered by the contractor, as necessary to insure health until final acceptance.
- The landscape contractor shall refer to the plant list and planting specifications for seasonal requirements and other restrictions related to the time of planting.



NOTE:
1. PLANTED AREAS WITHIN LIMIT OF WORK AND NOT OTHERWISE CALLED OUT AS TREE, SHRUB OR HERBACEOUS PLANTING AREAS ARE TO BE HYDROSEED WITH NEW ENGLAND CONSERVATION WILDLIFE MIX (SEE PLANT KEY, THIS PAGE)



75 York Street
Portland, Maine 04101
simonsarchitects.com
207.772.4656

Richardson & Associates,
Landscape Architects
11 Middle Street, Suite 04072
richardsonassociates.com
t. 207.284.9291

PROJECT NAME:
PATRONS OXFORD OFFICES
PORTLAND TECHNOLOGY PARK
RAND ROAD, PORTLAND, ME

SEAL:

THIS DRAWING IS THE PROPERTY OF SCOTT SIMONS ARCHITECTS (SSA) AND IS NOT TO BE COPIED OR REPRODUCED IN PART OR WHOLE
2015 © SCOTT SIMONS ARCHITECTS, LLC

REVISION:

1	DATE

DATE OF ISSUE: September 25, 2015
PROJECT NUMBER:
STATUS: For Permit Only

Planting Plan - Shrubs & Herbaceous Plants

SCALE: 1" = 20'
L-2.1