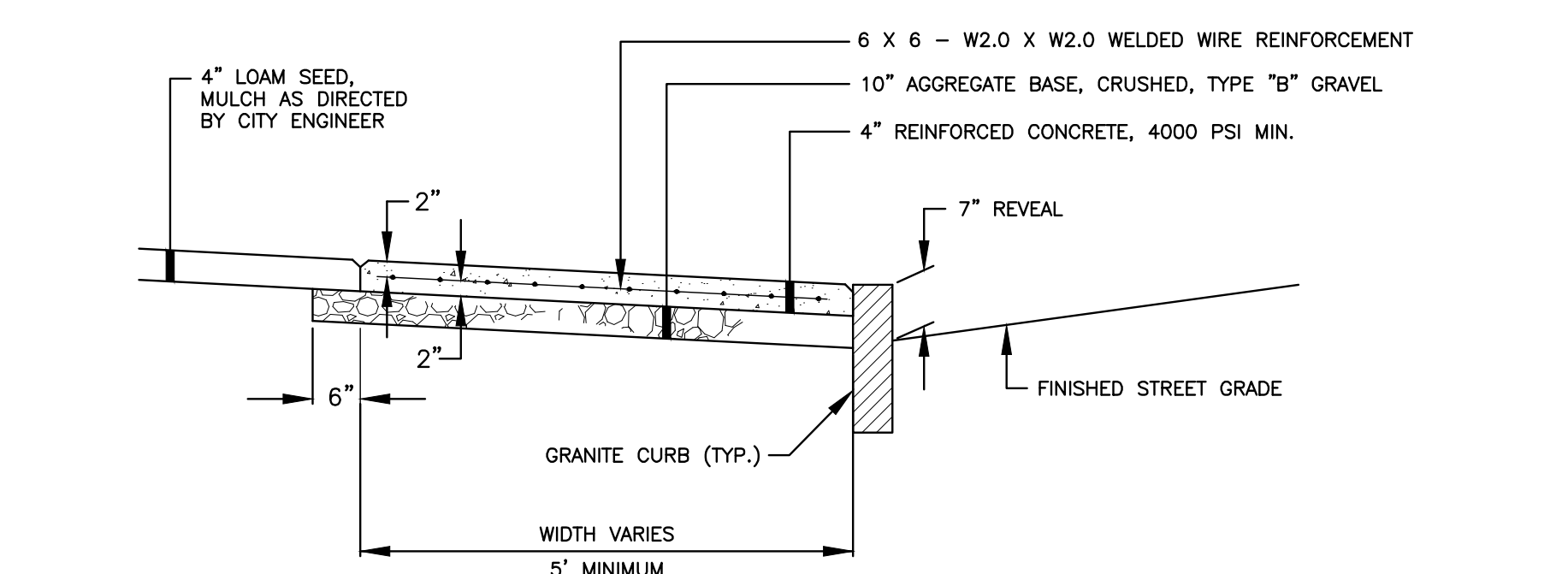
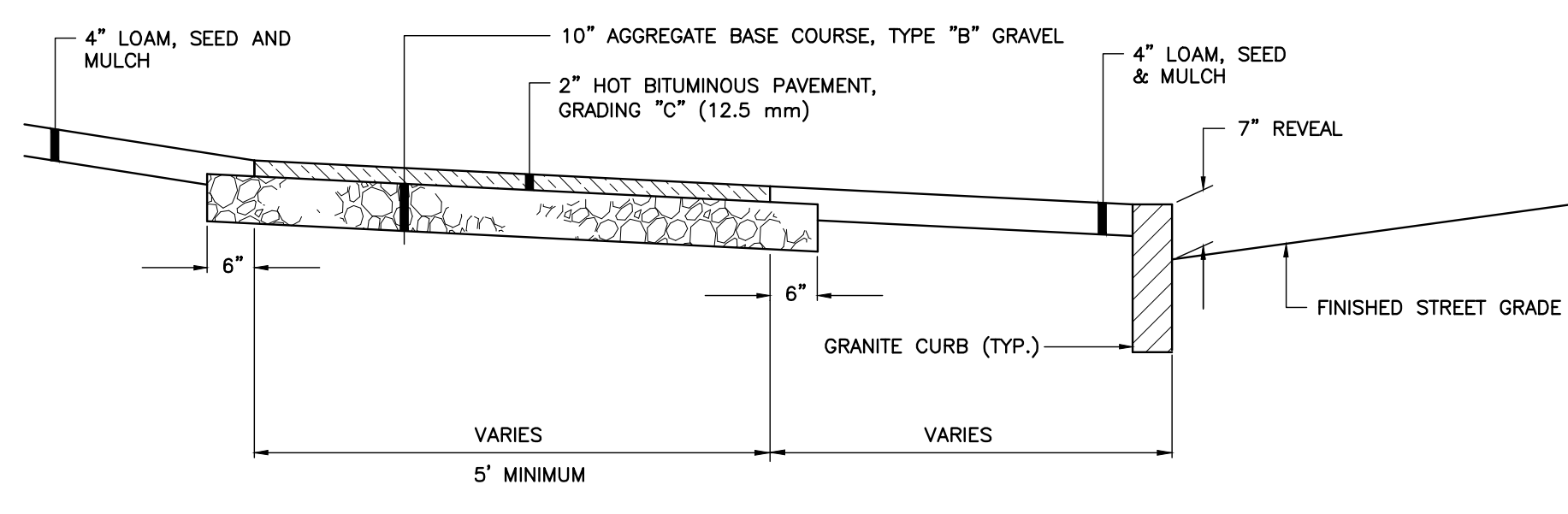


A

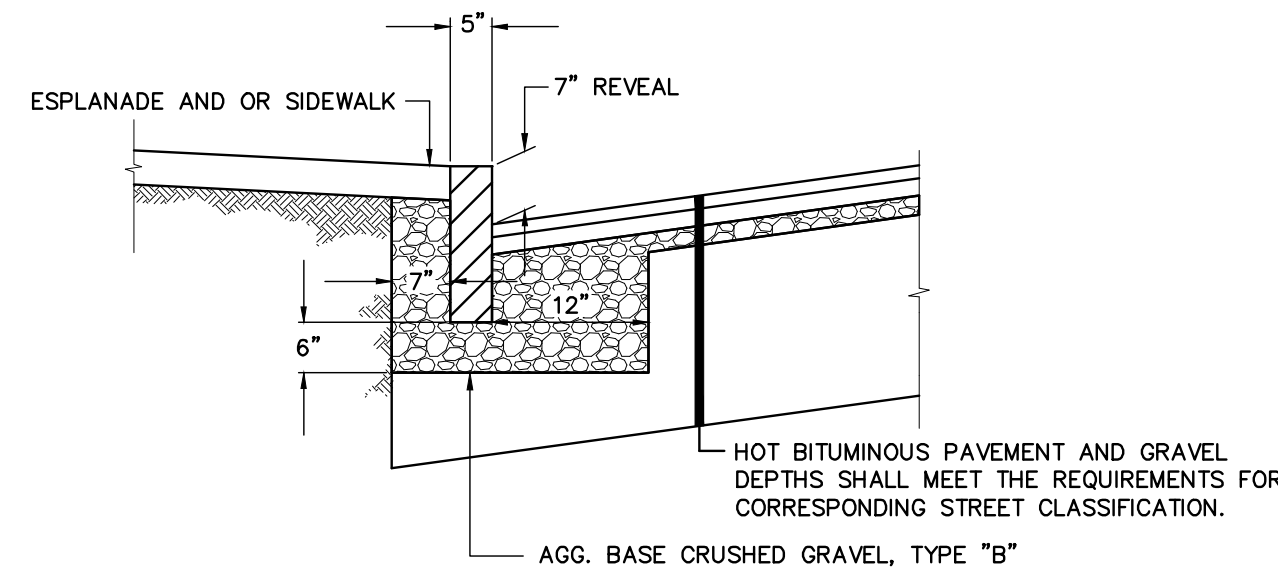
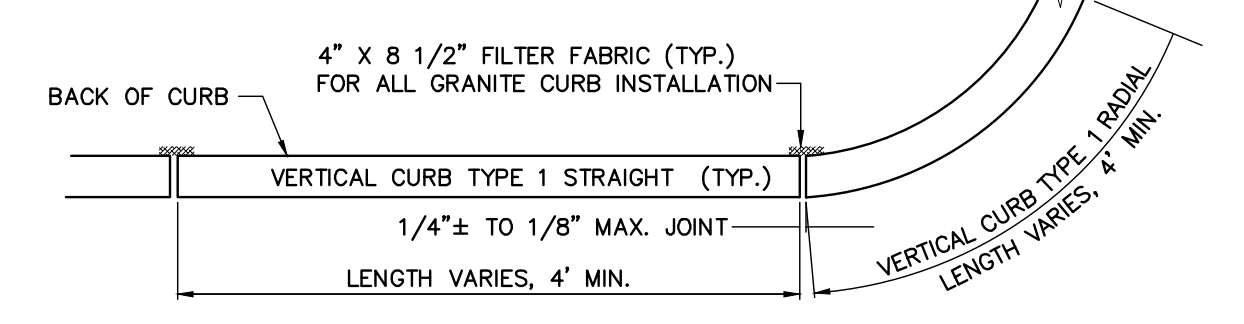
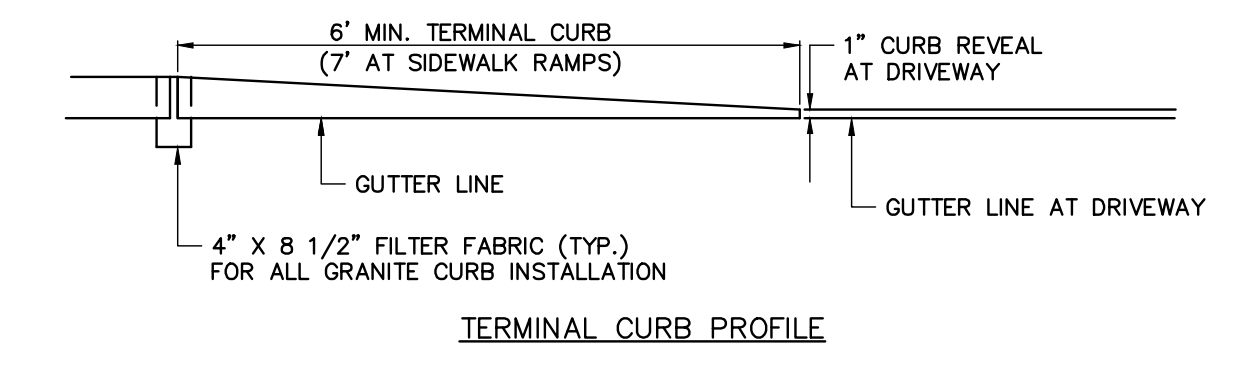
B



REINFORCED CONCRETE SIDEWALK
N.T.S.



BITUMINOUS SIDEWALK
N.T.S.



VERTICAL GRANITE CURB FULL DEPTH STREET CONSTRUCTION
N.T.S.

C

D

- Tools Needed for installation**
- Type Measure
 - Marker or Pencil
 - Masonry Drill Bit
 - Drill (Hammer drill recommended)
 - Hammer
 - Wrench 3/8"
 - Level
 - Washers (if leveling is necessary)

Recommended Base Materials:

Solid concrete is the best base material for installation. Ask your Dero Rack representative which anchor is appropriate for your application to ensure the proper anchors are shipped with your rack. Be sure rockfill is underneath the base material that could be damaged by drilling.

Installation:

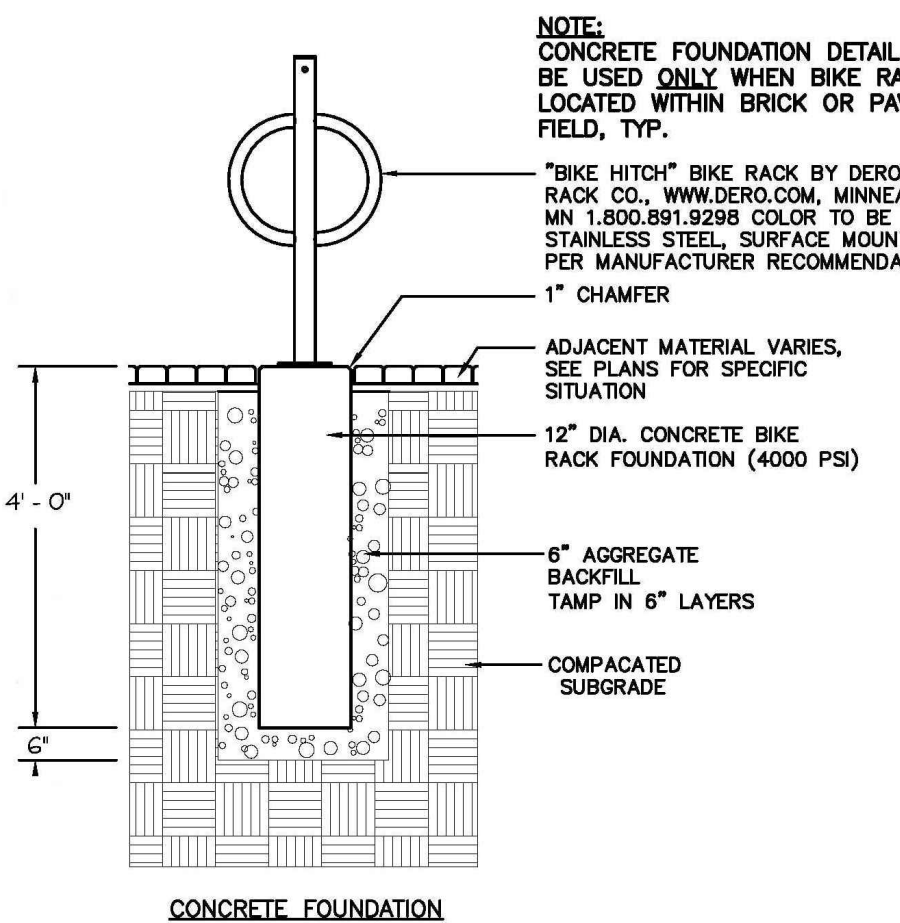
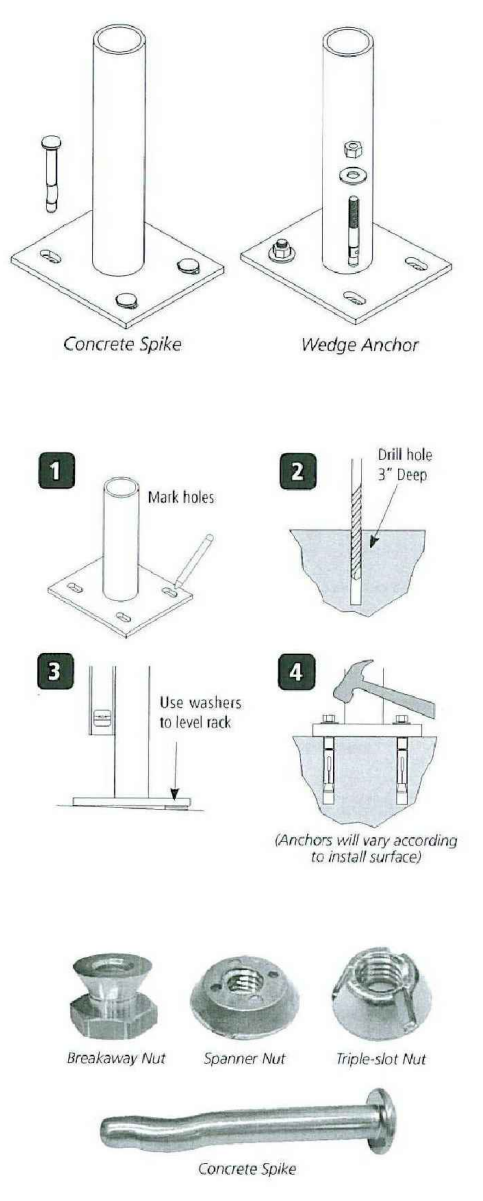
- 3/8" anchors are shipped with the rack. Place the rack in the desired location. Use a marker or pencil to outline the holes of the flange onto the base material. Drill the holes in accordance with the specifications shipped with the anchors. Make sure the holes are at least 6" away from any cracks in the base material.

Tamper Resistant Fasteners

The concrete spike is a permanent anchor. The top of the wedge anchor can also be pounded sideways after installation so that it cannot be removed. Other tamper resistant fasteners are also available for purchase.

When using the special tamper resistant nuts, always set and first tighten the anchors. Once the rack is installed, replace two nuts from the basket (opposite sides from each other) with the tamper resistant fasteners. DO NOT OVERTIGHTEN the tamper resistant nut.

If you have any questions about installation or other features of the bike rack, please call us at 1-800-338-0175.



TYPICAL BIKE RACK DETAIL
N.T.S.

NOTE:
CONCRETE FOUNDATION DETAIL TO BE USED ONLY WHEN BIKE RACK IS LOCATED WITHIN BRICK OR PAVEMENT FIELD, TYP.

"BIKE HITCH" BIKE RACK BY DERO BIKE RACK CO., WWW.DERO.COM, MINNEAPOLIS, MN 1-800-338-0175. COLOR TO BE STAINLESS STEEL, SURFACE MOUNTED PER MANUFACTURER RECOMMENDATIONS

1" CHAMFER

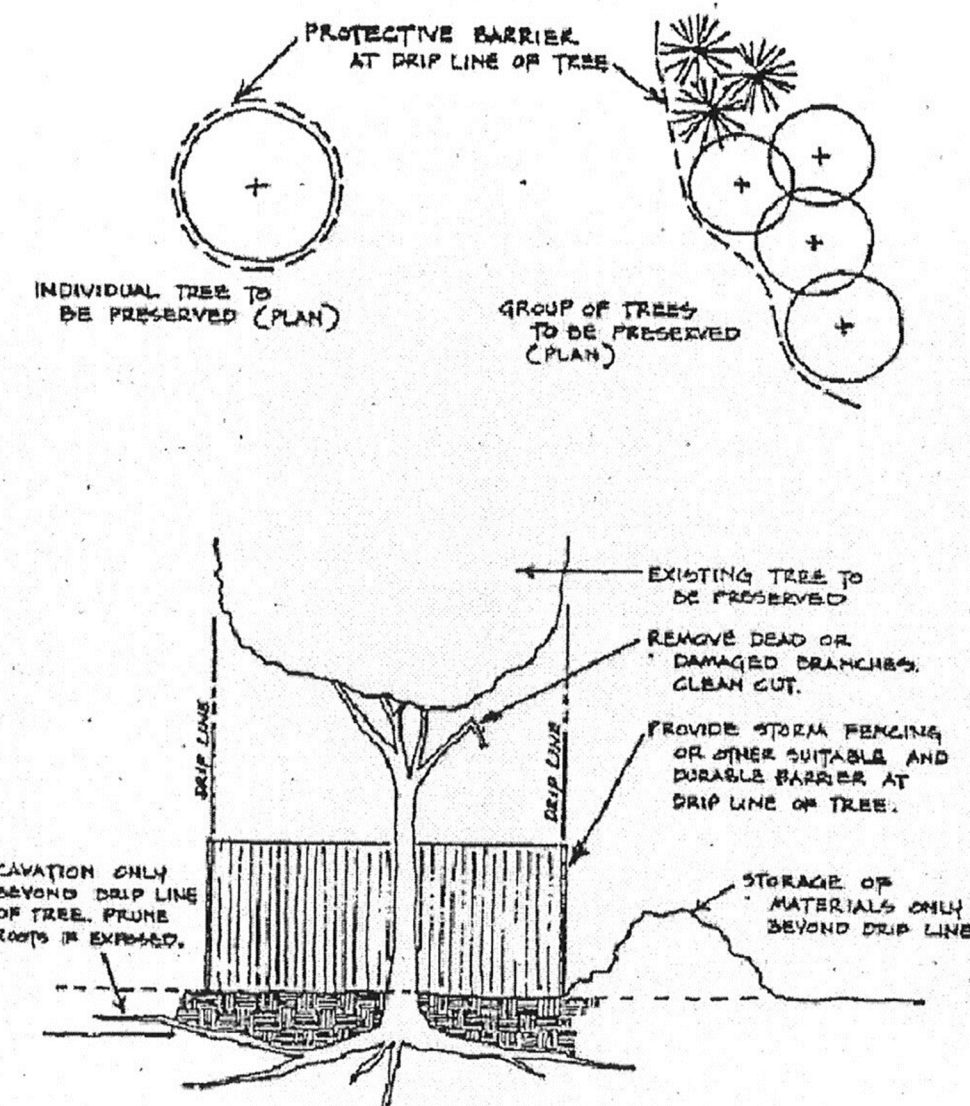
ADJACENT MATERIAL VARIES, SEE PLANS FOR SPECIFIC SITUATION

12" DIA. CONCRETE BIKE RACK FOUNDATION (4000 PSI)

8" AGGREGATE BACKFILL TAMP IN 6" LAYERS

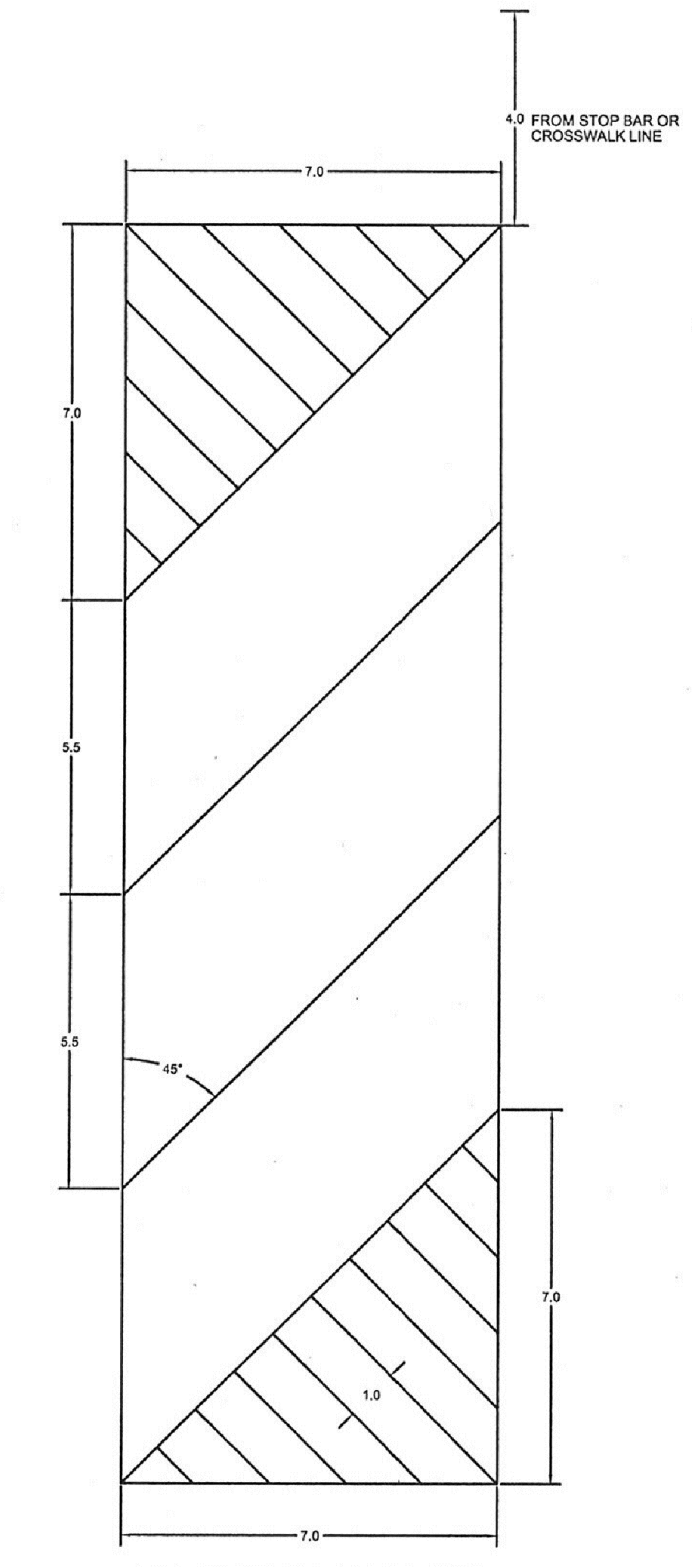
COMPACTED SUBGRADE

NOTE:
DETAIL FROM CITY OF PORTLAND, MAINE TECHNICAL STANDARDS MANUAL

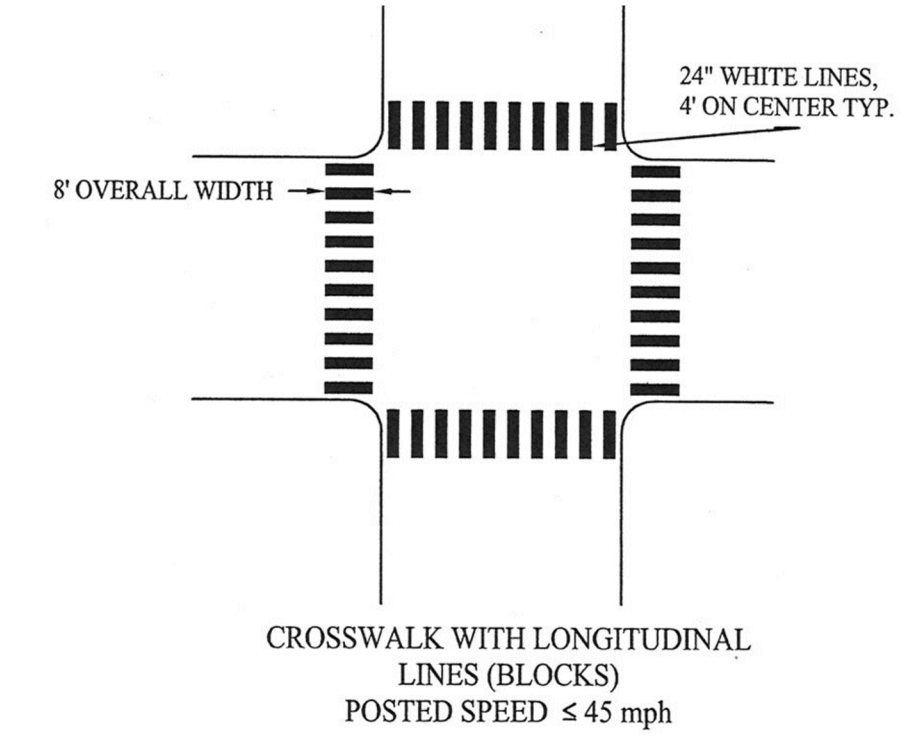


TREE PRESERVATION DETAIL
NOT TO SCALE

NOTE:
DETAIL FROM CITY OF PORTLAND, MAINE TECHNICAL STANDARDS MANUAL



MOTORCYCLE PARKING
NOT TO SCALE



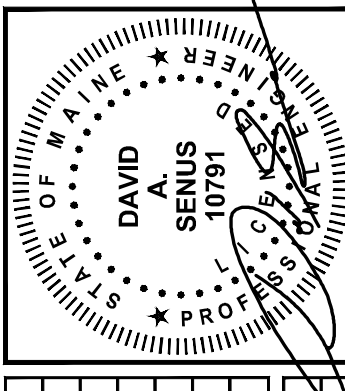
TYPICAL CROSSWALK MARKINGS
NOT TO SCALE

NOTE:
DETAIL FROM CITY OF PORTLAND, MAINE TECHNICAL STANDARDS MANUAL

41 Hutchins Drive
Portland, Maine 04102
800-428-4282 | www.woodardcurran.com



COMMITMENT & INTEGRITY DRIVE RESULTS
THIS DOCUMENT IS THE PROPERTY OF WOODARD & CURRAN INC. AND ITS CLIENT. REPRODUCTION OR DISTRIBUTION WITHOUT WRITTEN PERMISSION IS PROHIBITED.



10/2/2015

REV	DESCRIPTION	DATE
1	DESIGNED BY: ACA/LUS	
2	CHECKED BY: DAS	
3	DRAWN BY: JBC	

CIVIL DETAILS 6

CITY OF PORTLAND
ECONOMIC DEVELOPMENT OFFICE
PORTLAND, MAINE
& PATRONS OXFORD INSURANCE CO.

PORTLAND TECHNOLOGY PARK UPDATE
& LCE 4 DEVELOPMENT

JOB NO.: 229001.01
DATE: OCTOBER 2015
SCALE: AS NOTED
SHEET: 17 OF 17

C-16

A

B

C

D