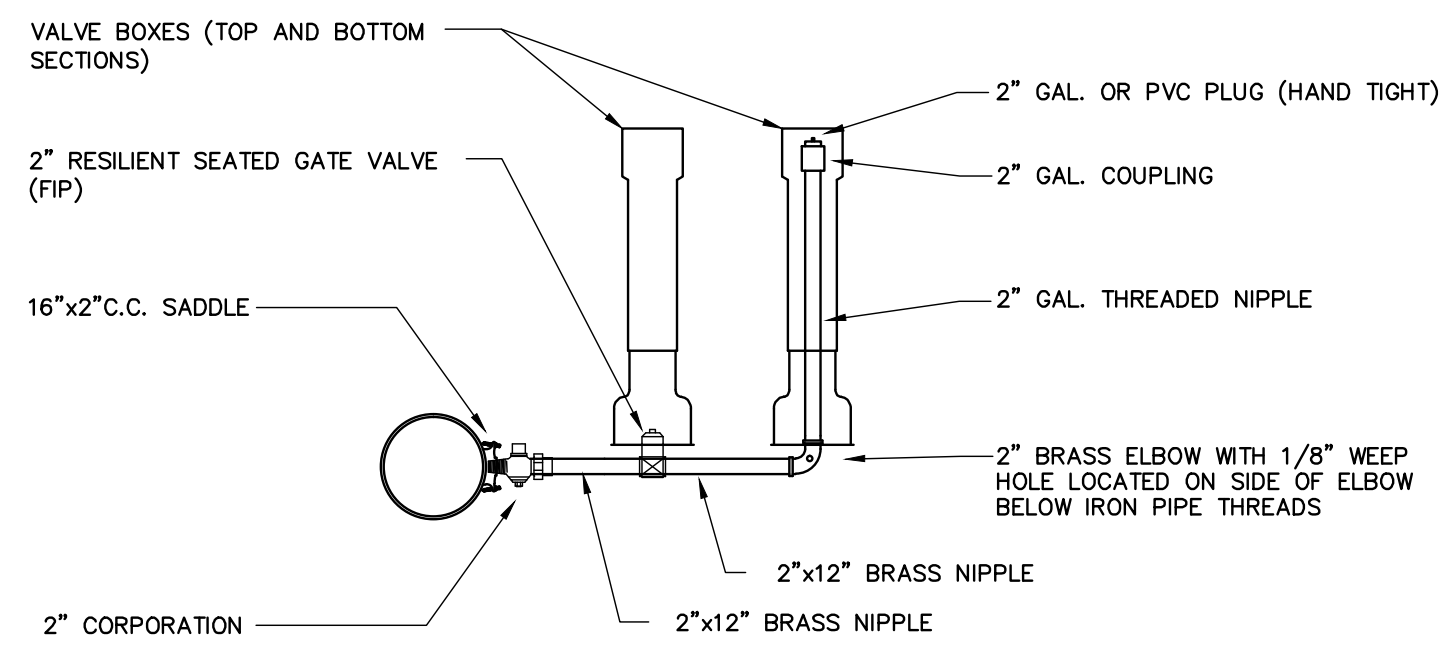
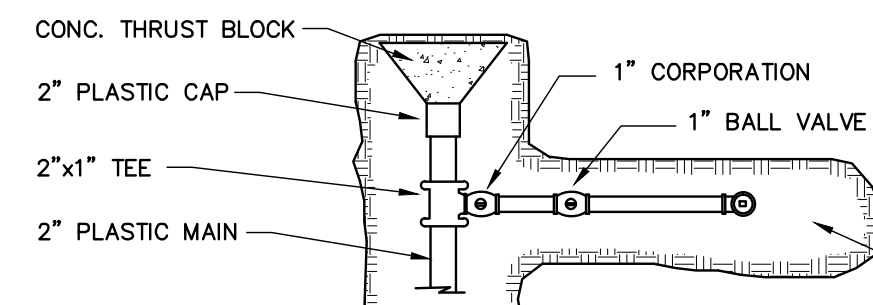


TOP VIEW

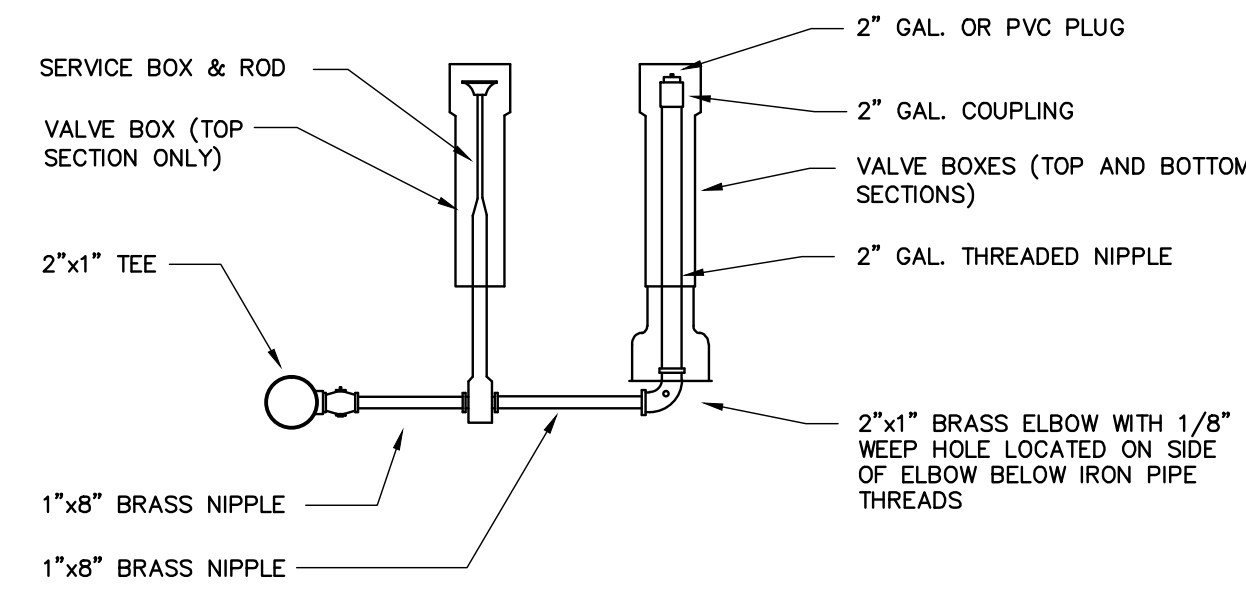


SIDE VIEW

SIDE-ARM BLOW-OFF
4" & LARGER MAINS
N.T.S.

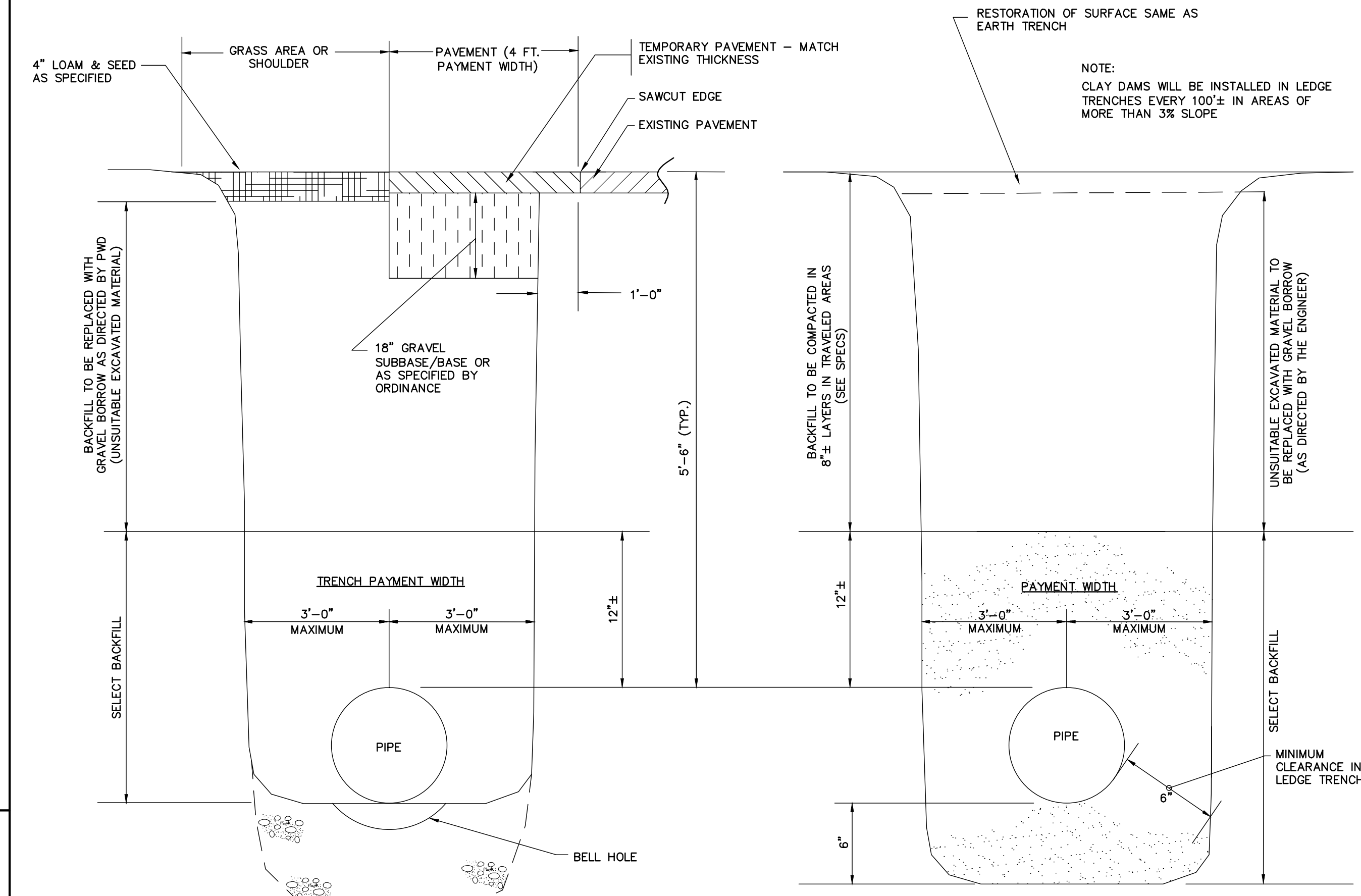


TOP VIEW



SIDE VIEW

SIDE-ARM BLOW-OFF
2" MAIN
N.T.S.

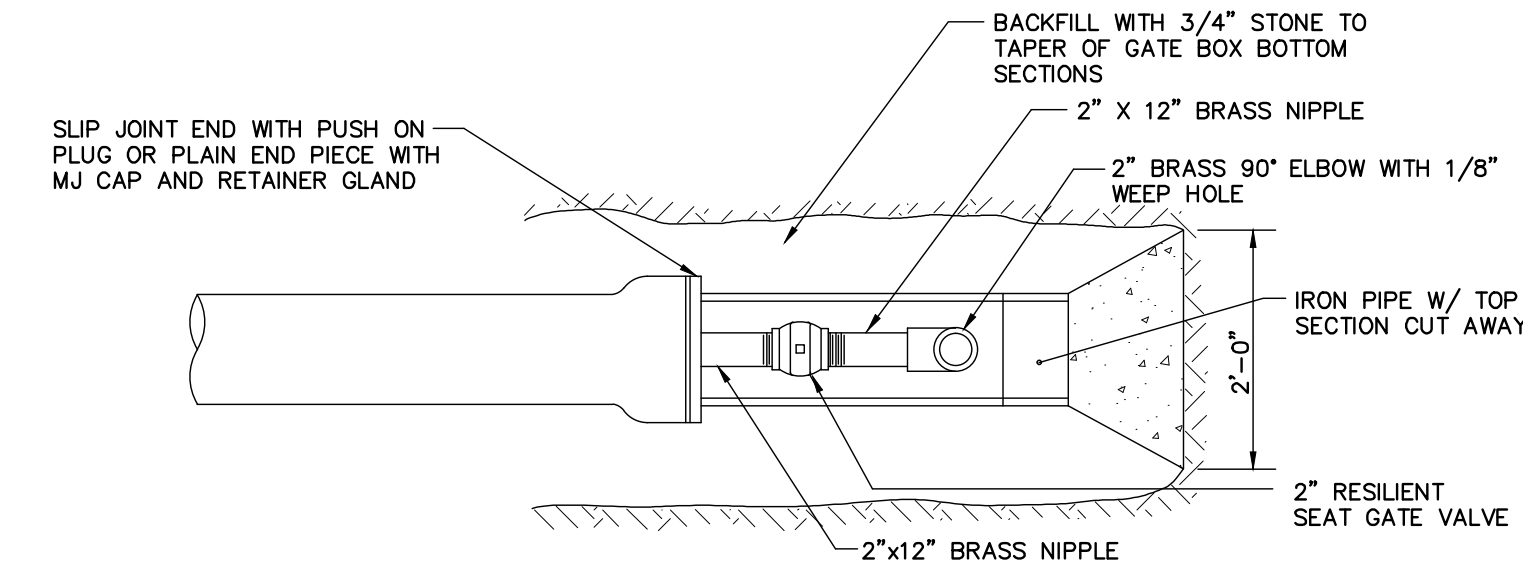


SECTION THRU EARTH TRENCH
N.T.S.

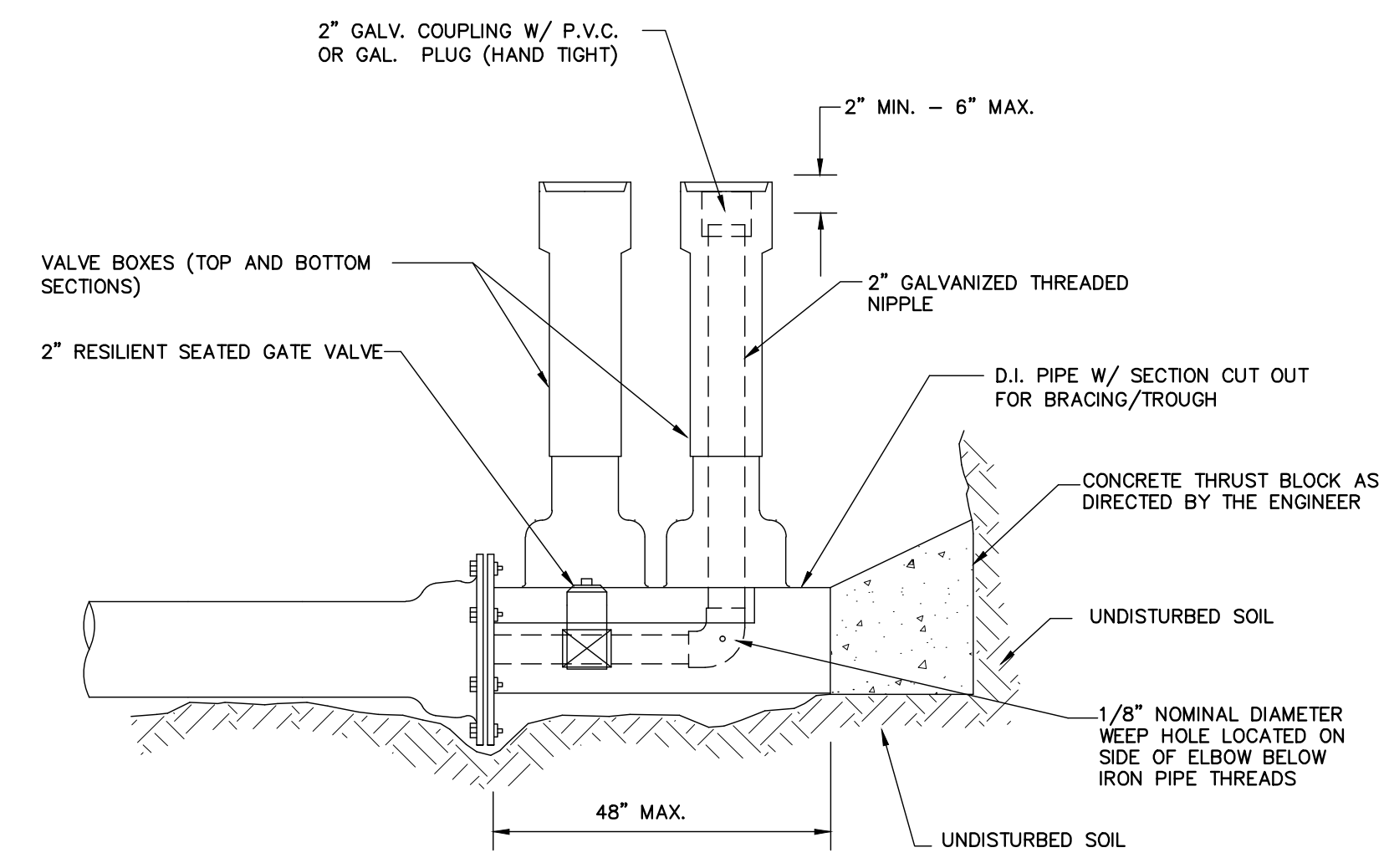
SECTION THRU LEDGE TRENCH
N.T.S.

RESTORATION OF SURFACE SAME AS EARTH TRENCH

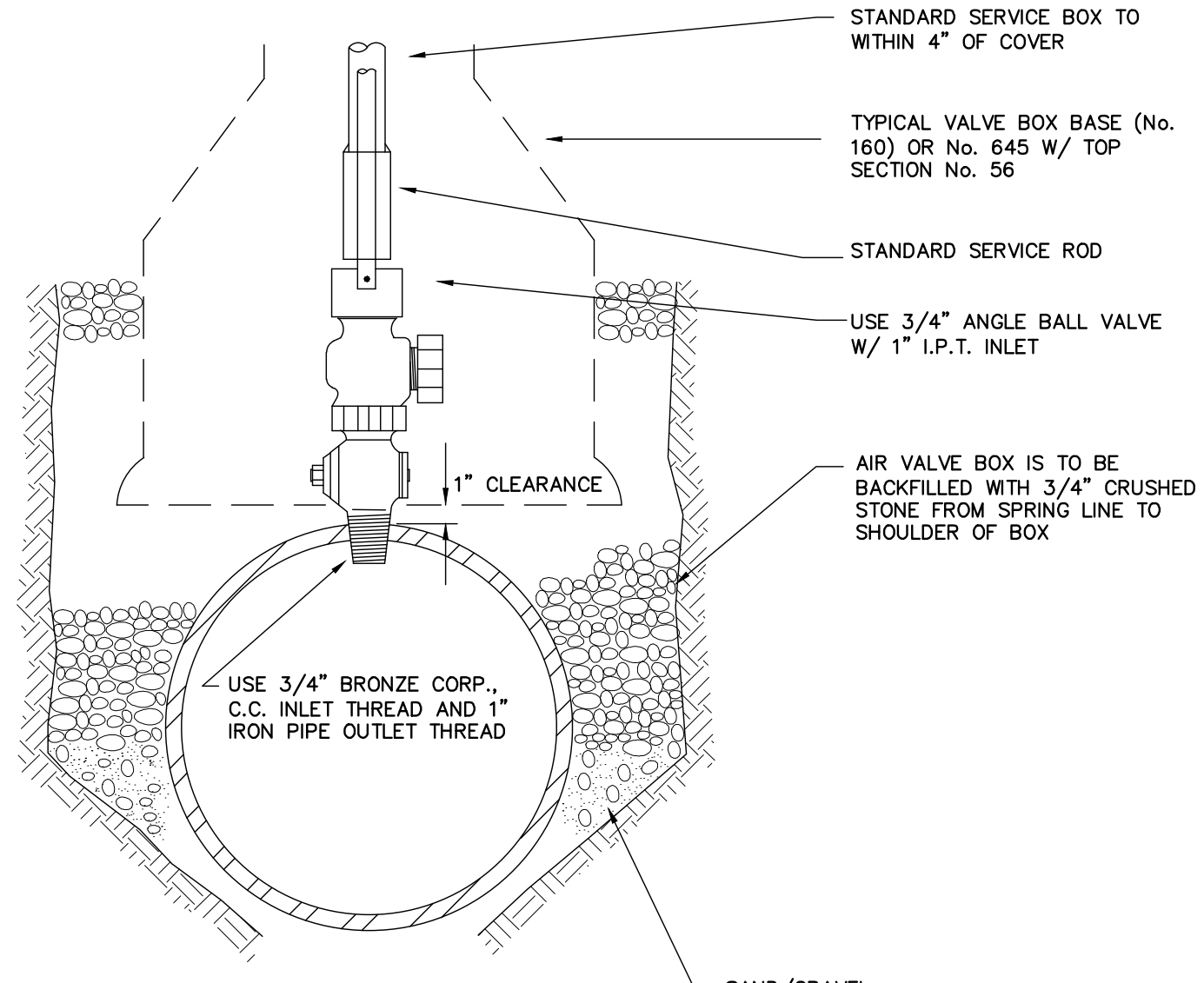
NOTE:
CLAY DAMS WILL BE INSTALLED IN LEDGE TRENCHES EVERY 100' IN AREAS OF MORE THAN 3% SLOPE.



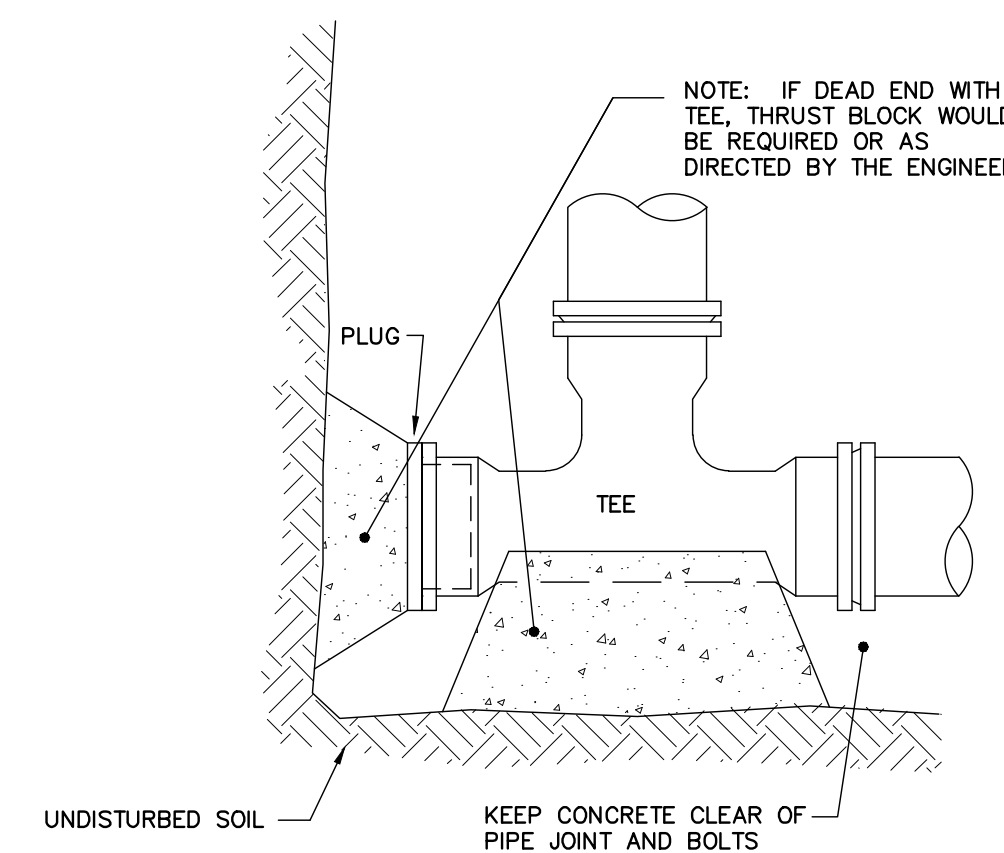
TOP VIEW



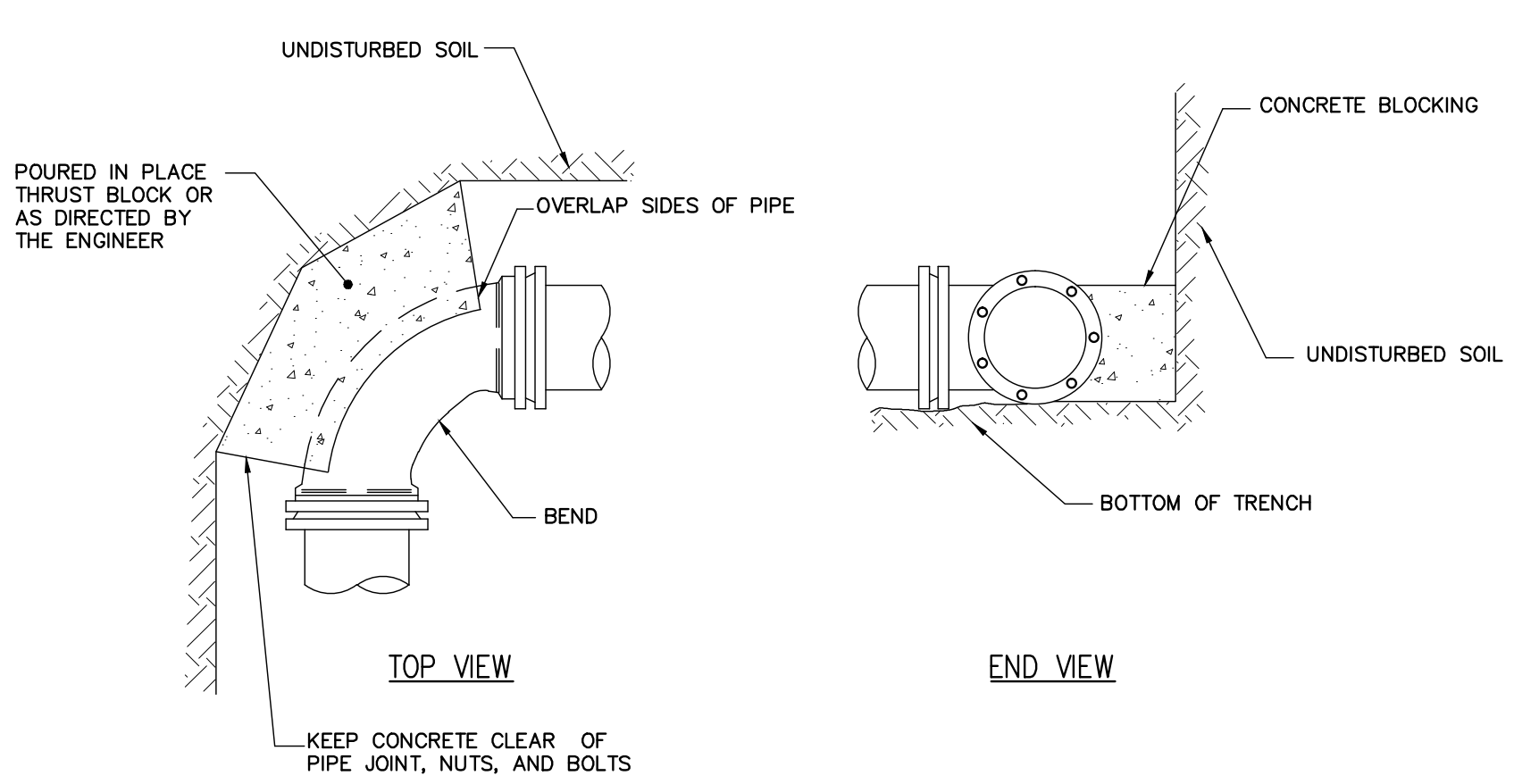
STANDARD 2" BLOW OFF
N.T.S.



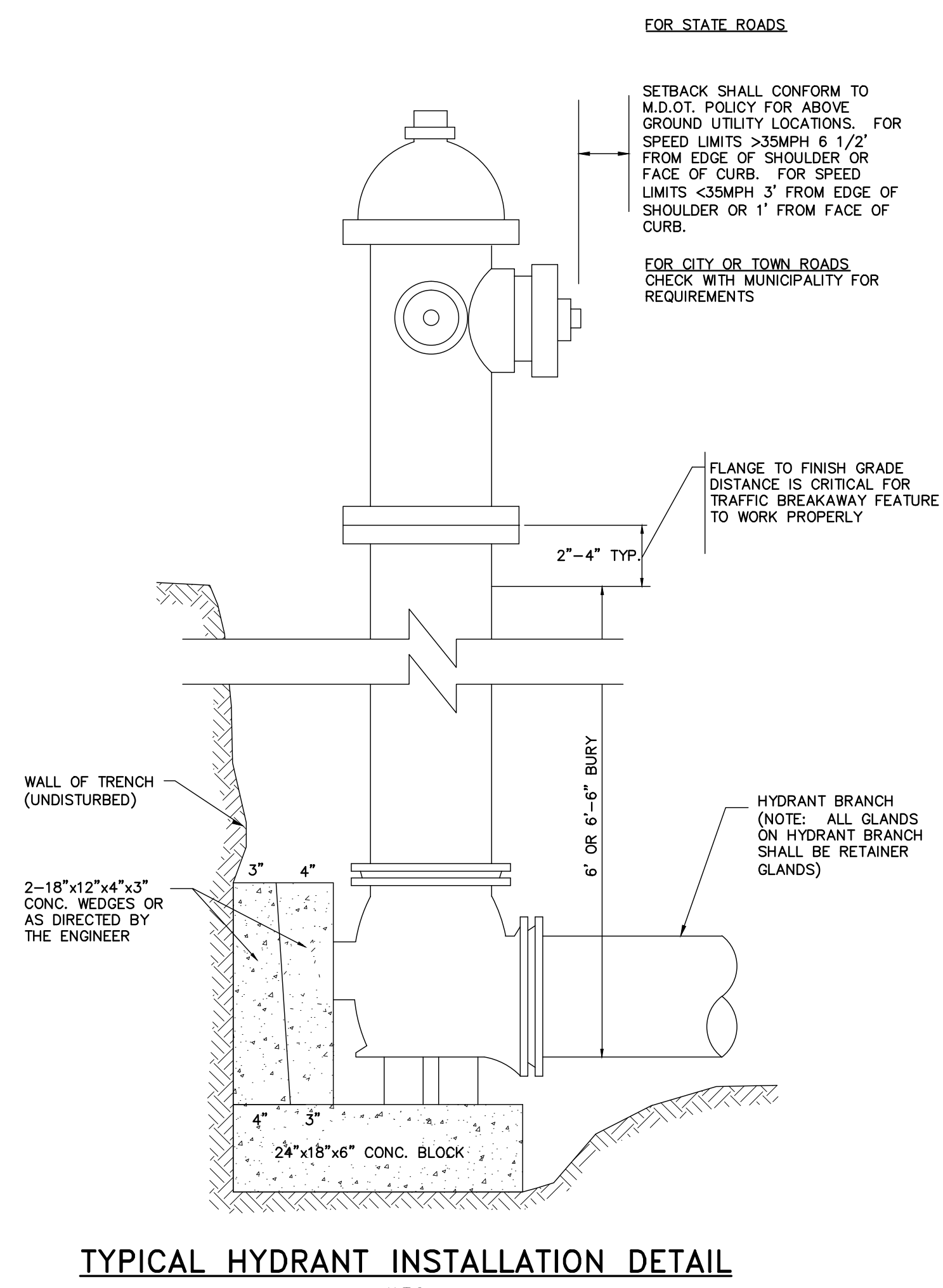
TYPICAL AIR VALVE (1")
N.T.S.



STANDARD TEE BLOCKING
N.T.S.



STANDARD BEND BLOCKING
N.T.S.



TYPICAL HYDRANT INSTALLATION DETAIL
N.T.S.

FOR STATE ROADS
SETBACK SHALL CONFORM TO M.D.O.T. POLICY FOR ABOVE GROUND UTILITY LOCATIONS. FOR SPEED LIMITS > 55MPH 6 1/2' FROM EDGE OF SHOULDER OR FACE OF CURB. FOR SPEED LIMITS < 35MPH 3' FROM EDGE OF SHOULDER OR 1' FROM FACE OF CURB.

FOR CITY OR TOWN ROADS
CHECK WITH MUNICIPALITY FOR REQUIREMENTS

NOTE:
WATER DETAILS FROM PORTLAND WATER DISTRICT ASSET MANAGEMENT & PLANNING DEPT. *STANDARD WATER MAIN REPLACEMENTS PORTLAND - SOUTH PORTLAND*

PROJECT NO.:
41 Hutchins Drive
Portland, Maine 04102
800.428.4282 | www.woodardcurran.com

WOODARD & CURRAN
COMMITMENT & INTEGRITY DRIVE RESULTS

THIS DOCUMENT IS THE PROPERTY OF WOODARD & CURRAN INC. AND ITS CLIENT. IT IS TO BE USED ONLY FOR THE PROJECT AND LOCATION SPECIFICALLY IDENTIFIED HEREIN. ANY REUSE OR REPRODUCTION OF THIS DOCUMENT WITHOUT THE WRITTEN PERMISSION OF WOODARD & CURRAN IS PROHIBITED.

DAVID SENUS
REGISTERED PROFESSIONAL ENGINEER
NO. 10791
MECHANICAL
STATE OF MAINE

10/2/2015

REV	DESCRIPTION	DATE
DESIGNED BY: ACA/LUS	CHECKED BY: DAS	
DRAWN BY: JBC		

CIVIL DETAILS 4

CITY OF PORTLAND
ECONOMIC DEVELOPMENT OFFICE
PORTLAND, MAINE
& PATRONS OXFORD INSURANCE CO.

PORTLAND TECHNOLOGY PARK UPDATE
& LCE 4 DEVELOPMENT

JOB NO.: 229001.01
DATE: OCTOBER 2015
SCALE: AS NOTED
SHEET: 15 OF 17