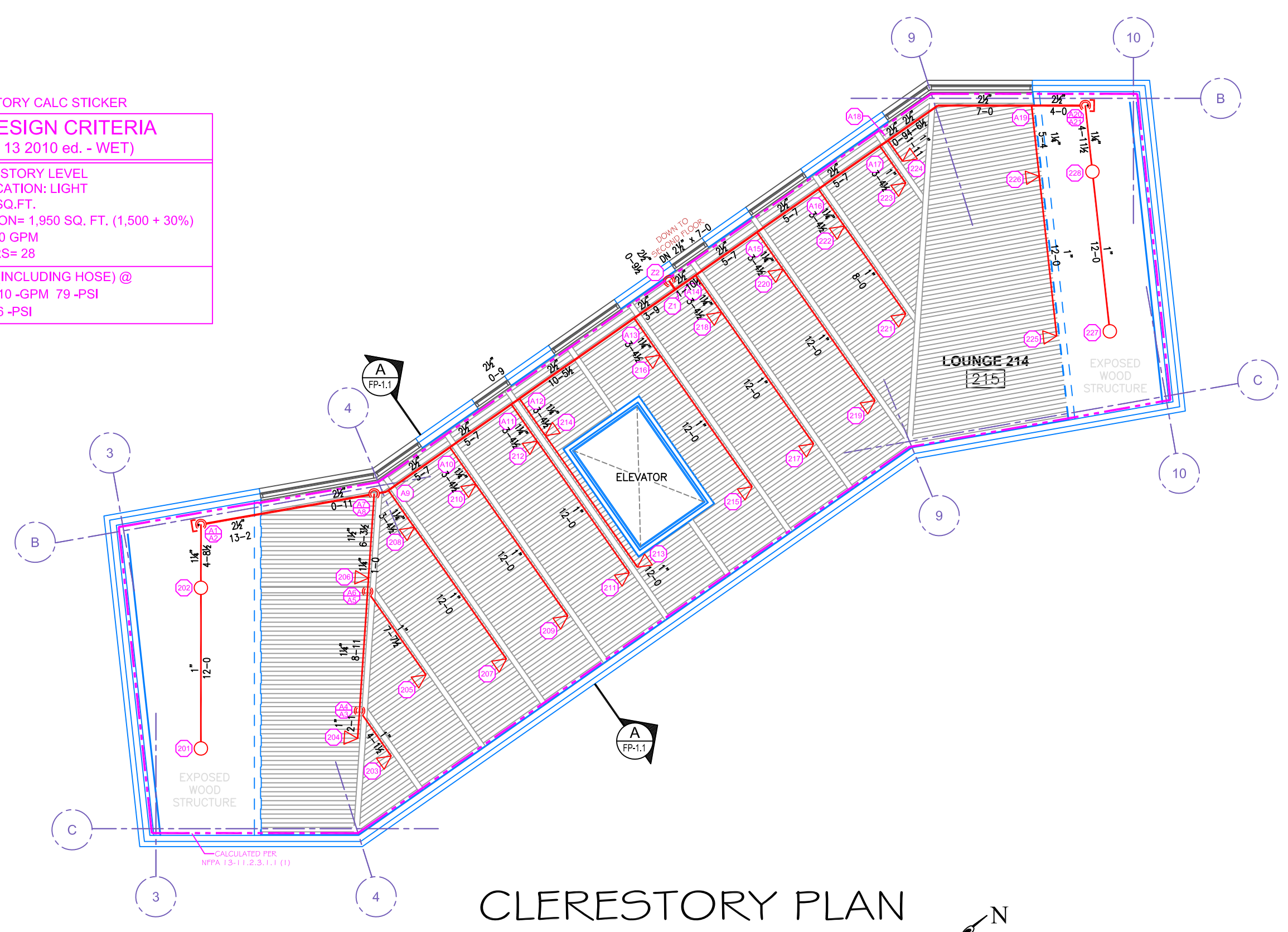


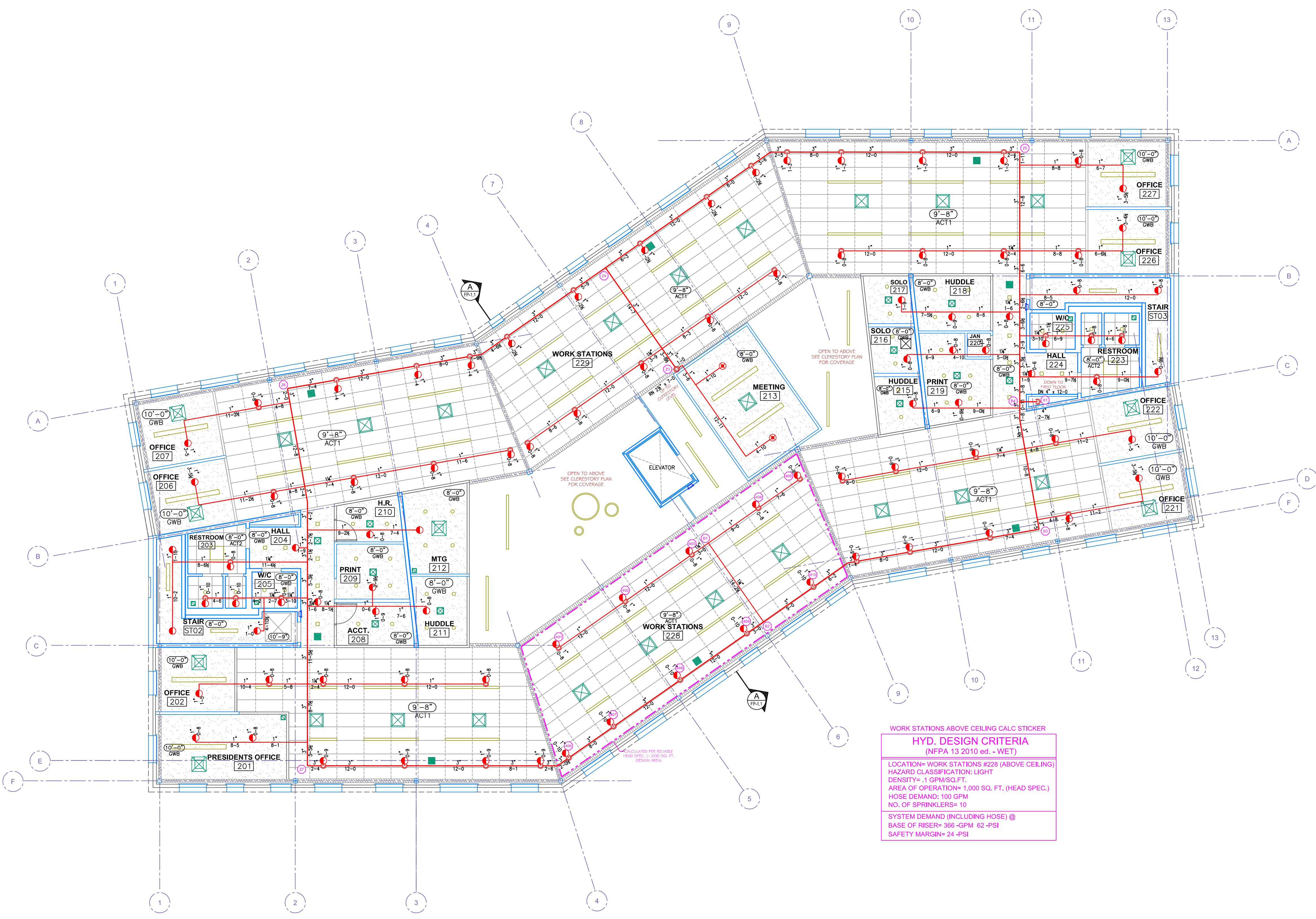
CLERESTORY CALC STICKER
HYD. DESIGN CRITERIA
 (NFPA 13 2010 ed. - WET)
 LOCATION= CLERESTORY LEVEL
 HAZARD CLASSIFICATION: LIGHT
 DENSITY= 1 GPM/SQ.FT.
 AREA OF OPERATION= 1,950 SQ. FT. (1,500 + 30%)
 HOSE DEMAND: 100 GPM
 NO. OF SPRINKLERS= 28
 SYSTEM DEMAND (INCLUDING HOSE) @
 BASE OF RISER= 610 -GPM 79 -PSI
 SAFETY MARGIN= 6 -PSI



CLERESTORY PLAN
 SCALE: 1/8" = 1'-0"
 PROTECTED AREA: 1,932 SQ. FT.



SITE PLAN
 SCALE: N.T.S.



WORK STATIONS ABOVE CEILING CALC STICKER
HYD. DESIGN CRITERIA
 (NFPA 13 2010 ed. - WET)
 LOCATION= WORK STATIONS #228 (ABOVE CEILING)
 HAZARD CLASSIFICATION: LIGHT
 DENSITY= 1 GPM/SQ.FT.
 AREA OF OPERATION= 1,000 SQ. FT. (HEAD SPEC)
 HOSE DEMAND: 100 GPM
 NO. OF SPRINKLERS= 10
 SYSTEM DEMAND (INCLUDING HOSE) @
 BASE OF RISER= 308 -GPM 62 -PSI
 SAFETY MARGIN= 24 -PSI

SECOND FLOOR PLAN
 SCALE: 1/8" = 1'-0"
 PROTECTED AREA: 9,883 SQ. FT.

THIS DRAWING HAS BEEN
 REVIEWED FOR GENERAL
 COMPLIANCE WITH THE 2010 ed.
 OF NFPA 13 - STANDARD FOR
 AUTOMATIC SPRINKLER SYSTEMS.
 ANY DEVIATIONS FROM THIS
 DOCUMENT SHALL BE MADE
 UNDER THE SUPERVISION OF A
 CERTIFIED DESIGN PROFESSIONAL.
 REVIEW COMPLETED BY:
 JEREMY A. FOSS
 MAINE RMS #808
 NICET LEVEL III
 CERTIFICATION #126801
 SIGNED: 