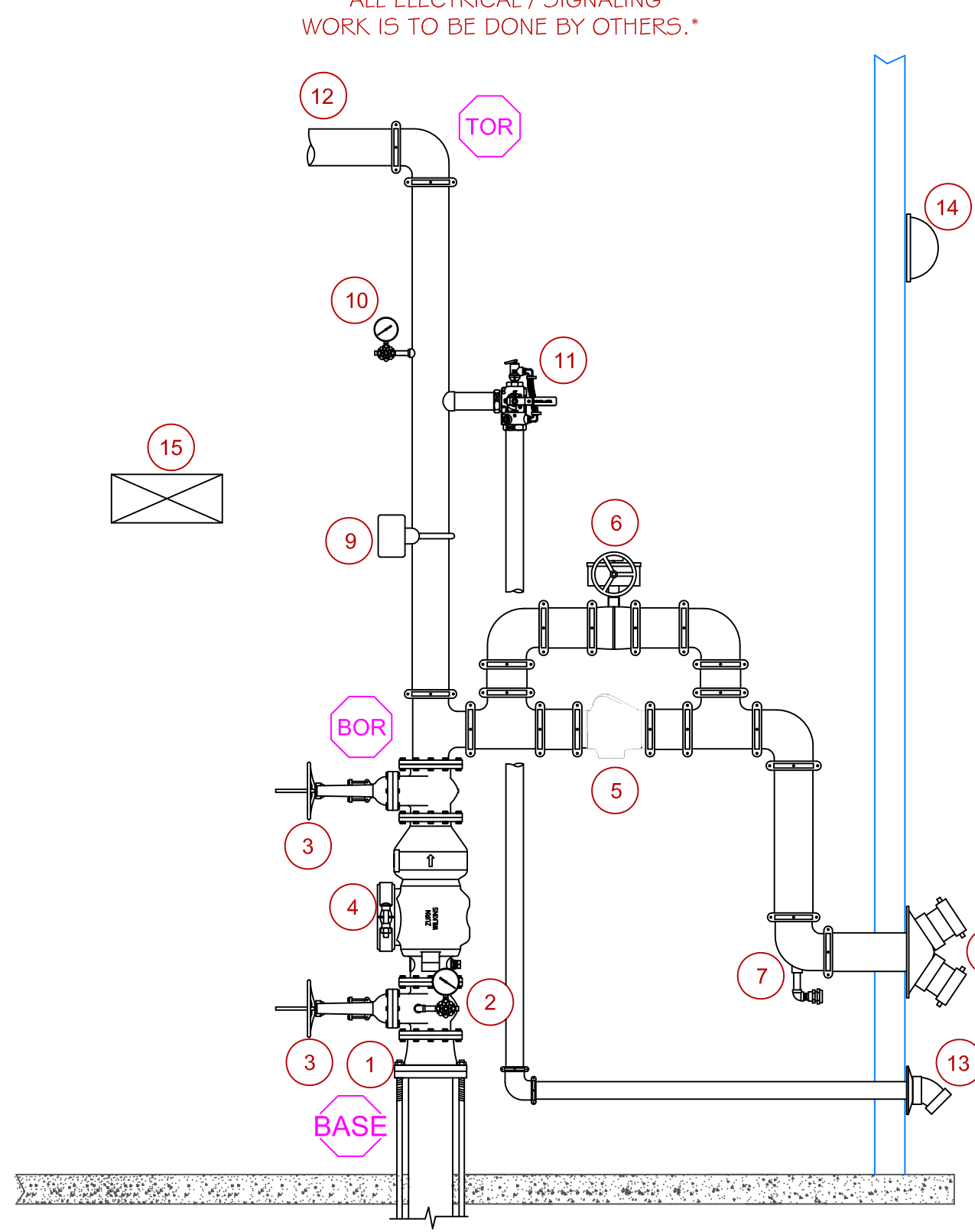


SYSTEM RISER DETAIL LEGEND

1) 8" x 4" FLANGED REDUCER	9) 4" VANE FLOW SWITCH
2) WATER PRESSURE GAUGE (SUPPLY)	10) WATER PRESSURE GAUGE (SYSTEM)
3) 4" GATE VALVE W/ TAMPER SWITCH	11) 2" TEST N DRAIN W/ RELIEF VALVE
4) WILKINS 350 BACKFLOW PREVENTER	12) 4" FEED TO SYSTEM
5) 4" CHECK VALVE (F.D.C.)	13) 2" MAIN DRAIN DISCHARGE
6) 4" BUTTERFLY VALVE (NORMALLY CLOSED)	14) 120V EXTERIOR ELECTRIC BELL
7) BALL DRIP VALVE	15) SPARE SPRINKLER HEAD BOX
8) 2 1/2" SIAMESE FIRE DEPT. CONNECTION	



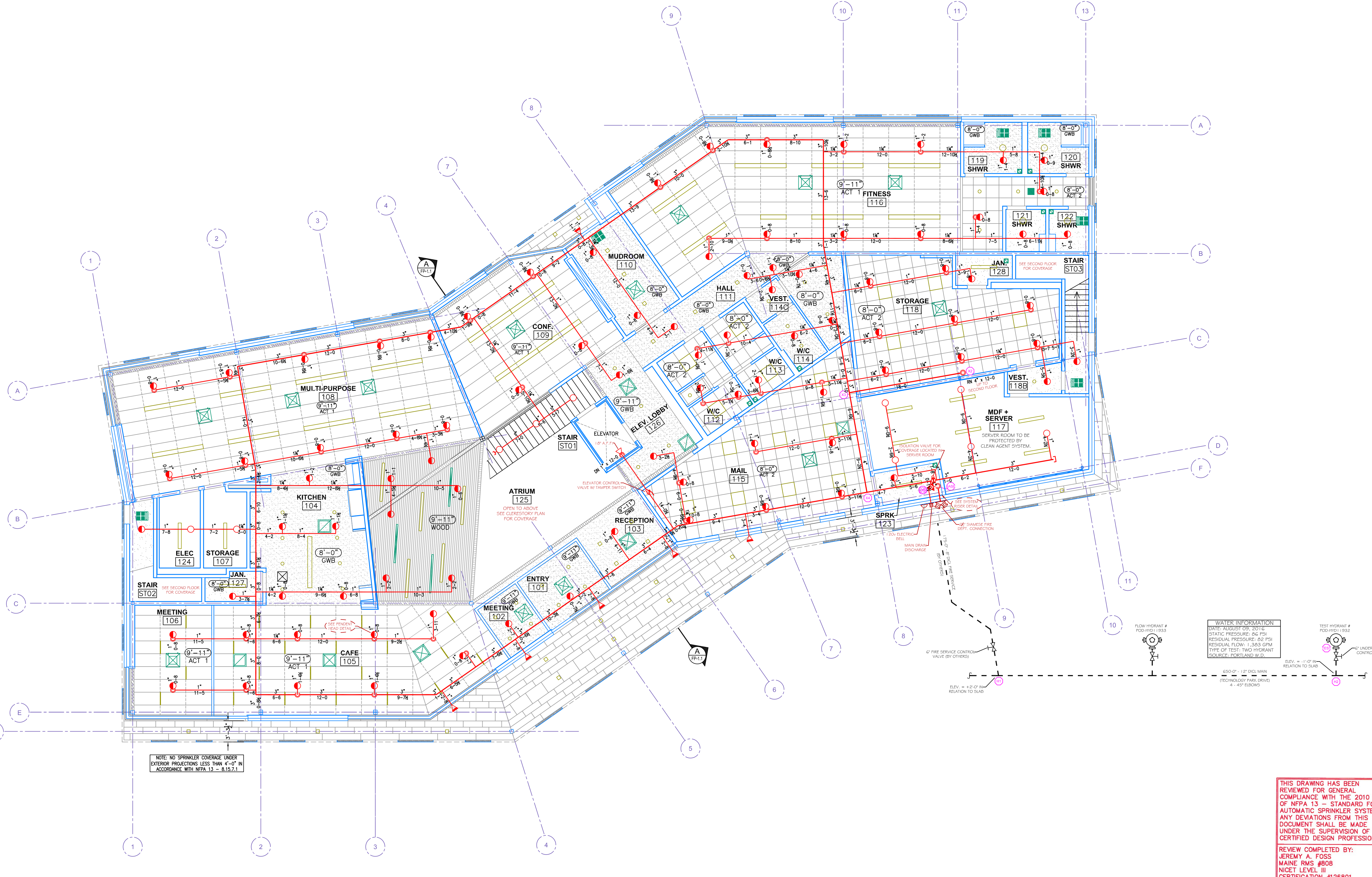
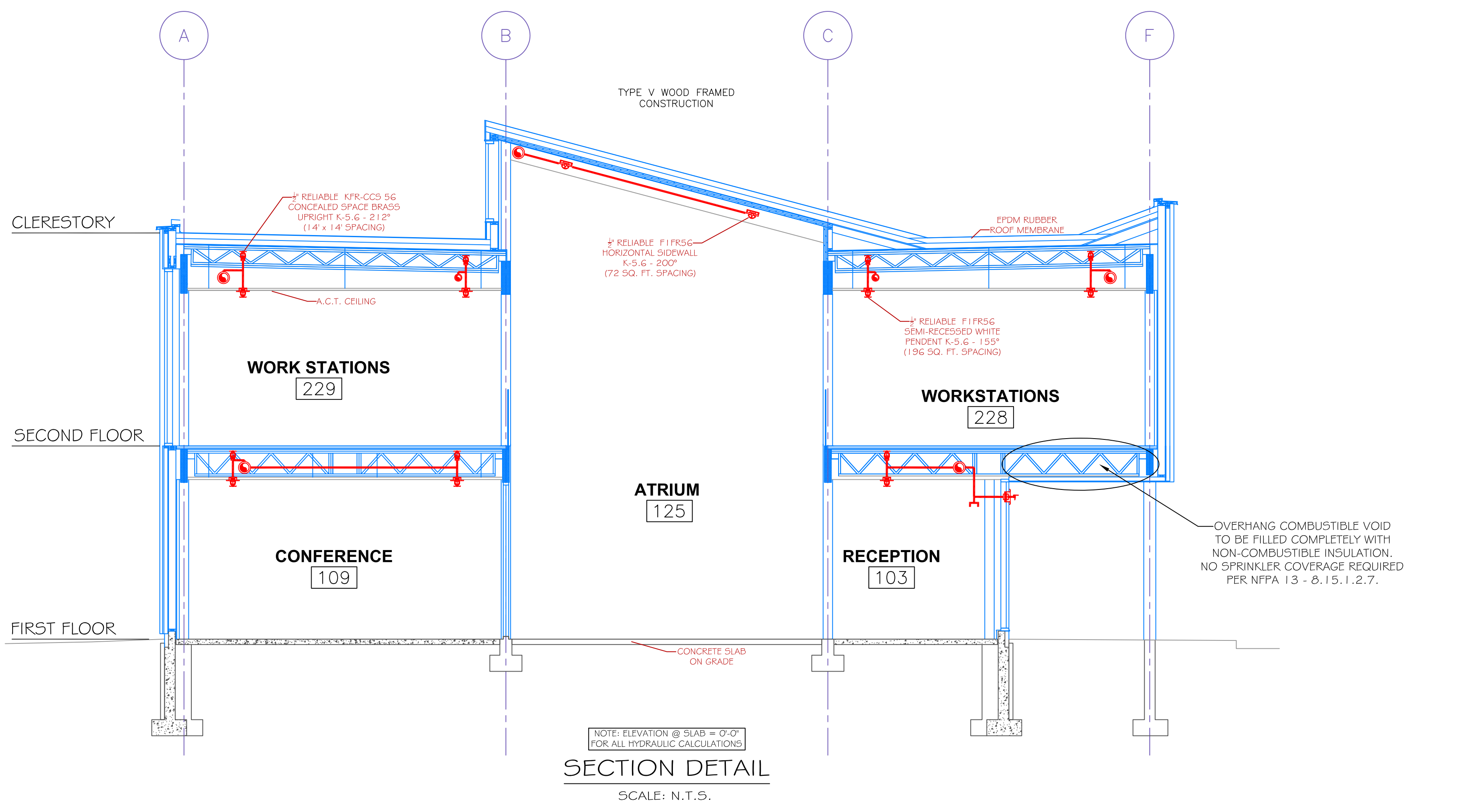
NOTE: F.D.C. CHECK VALVE BYPASS PROVIDES METHOD FOR TESTING BACKFLOW PREVENTER AT SYSTEM DEMAND

PROJECT DESCRIPTION

BUILDING CONST: THE BUILDING IS CONSTRUCTED WITH WOOD FRAMING THROUGHOUT. ENGINEERED OPEN WEB WOOD JOISTS ARE USED THROUGHOUT THE MAJORITY OF THE STRUCTURE. INTERIOR WALLS AND CEILINGS CONTAIN WOOD FRAMING THROUGHOUT. THE ROOF STRUCTURE IS A FLAT ROOF CONSTRUCTED WITH WOOD FRAMING AND FINISHED WITH AN EPDM RUBBER MEMBRANE. INSULATION IS LOCATED AT THE ROOF LEVEL MAKING THE ENTIRE SPRINKLERED AREA OF THE STRUCTURE A "CONDITIONED SPACE".

BUILDING OCCUP: THE BUILDING IS DESIGNED AS AN OFFICE BUILDING FOR THE PATRONS OXFORD INSURANCE COMPANY.

SPRINKLER DESIGN: THE SPRINKLER SYSTEM HAS BEEN DESIGNED USING A LIGHT HAZARD CLASSIFICATION THROUGHOUT WITH THE EXCEPTION OF A FEW SMALL MECHANICAL STORAGE AREAS LOCATED ON THE FIRST FLOOR. THE CLERESTORY LEVEL HAS BEEN CALCULATED WITH NO DESIGN AREA REDUCTION DUE TO THE HIGH CEILING (FROM THE FIRST FLOOR UP THROUGH TO THE CLERESTORY LEVEL). THE SECOND FLOOR HAS BEEN CALCULATED PER THE RELIABLE HEAD SPECIFICATION FOR COMBUSTIBLE CONCEALED SPACE UPRIGHTS WHICH REQUIRES A MINIMUM DESIGN AREA OF 1,000 SQUARE FEET. THE FIRST FLOOR PIPING HAS BEEN BASED ON THE SECOND FLOOR CALCULATION.
 -THE SPRINKLER SYSTEM HAS BEEN DESIGNED TO MEET ALL APPLICABLE CODES AND STANDARDS REGARDING AN NFPA 13 2016 ed SYSTEM.



THIS DRAWING HAS BEEN REVIEWED FOR GENERAL COMPLIANCE WITH THE 2010 ed. OF NFPA 13 - STANDARD FOR AUTOMATIC SPRINKLER SYSTEMS. ANY DEVIATIONS FROM THIS DOCUMENT SHALL BE MADE UNDER THE SUPERVISION OF A CERTIFIED DESIGN PROFESSIONAL.

REVIEW COMPLETED BY:
 JEREMY A. FOSS
 MAINE RMS #808
 NICET LEVEL III
 CERTIFICATION #126801

SIGNED: _____

NOTE: NO SPRINKLER COVERAGE UNDER EXTERIOR PROJECTIONS LESS THAN 4'-0" IN ACCORDANCE WITH NFPA 13 - §15.7.1

NOTE: ELEVATION @ SLAB = 0'-0" FOR ALL HYDRAULIC CALCULATIONS

