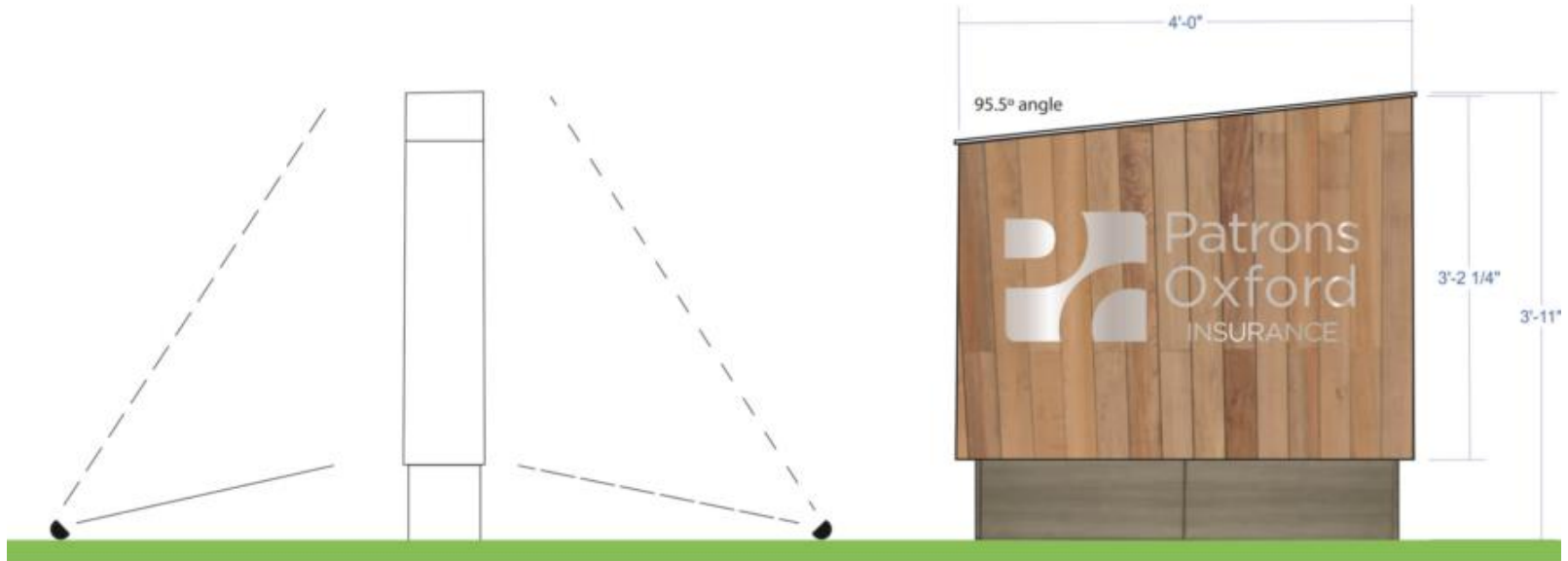


# Patrons Oxford Insurance Freestanding Sign

- (1) D.F. 3' 2" x 4' x 12" EXTERNALLY ILLUMINATED FREESTANDING SIGN
- ½" BRUSHED ALUMINUM STUD MOUNTED LETTERS W/ ½" STANDOFFS
  - ROOFING: PREWEATHERED GALVALUM
  - B/G: 1" x 6" SHIP LAP
  - BASE: FIBER CEMENT SIDING



SIDE VIEW  
Example of lighting from ground



Client & Location



Rand Rd  
Portland ME

Customer Approval Signature

Revisions

Drawing ID

Date  
6.13.17

Page #

Drawn By

Sales Rep

WO #