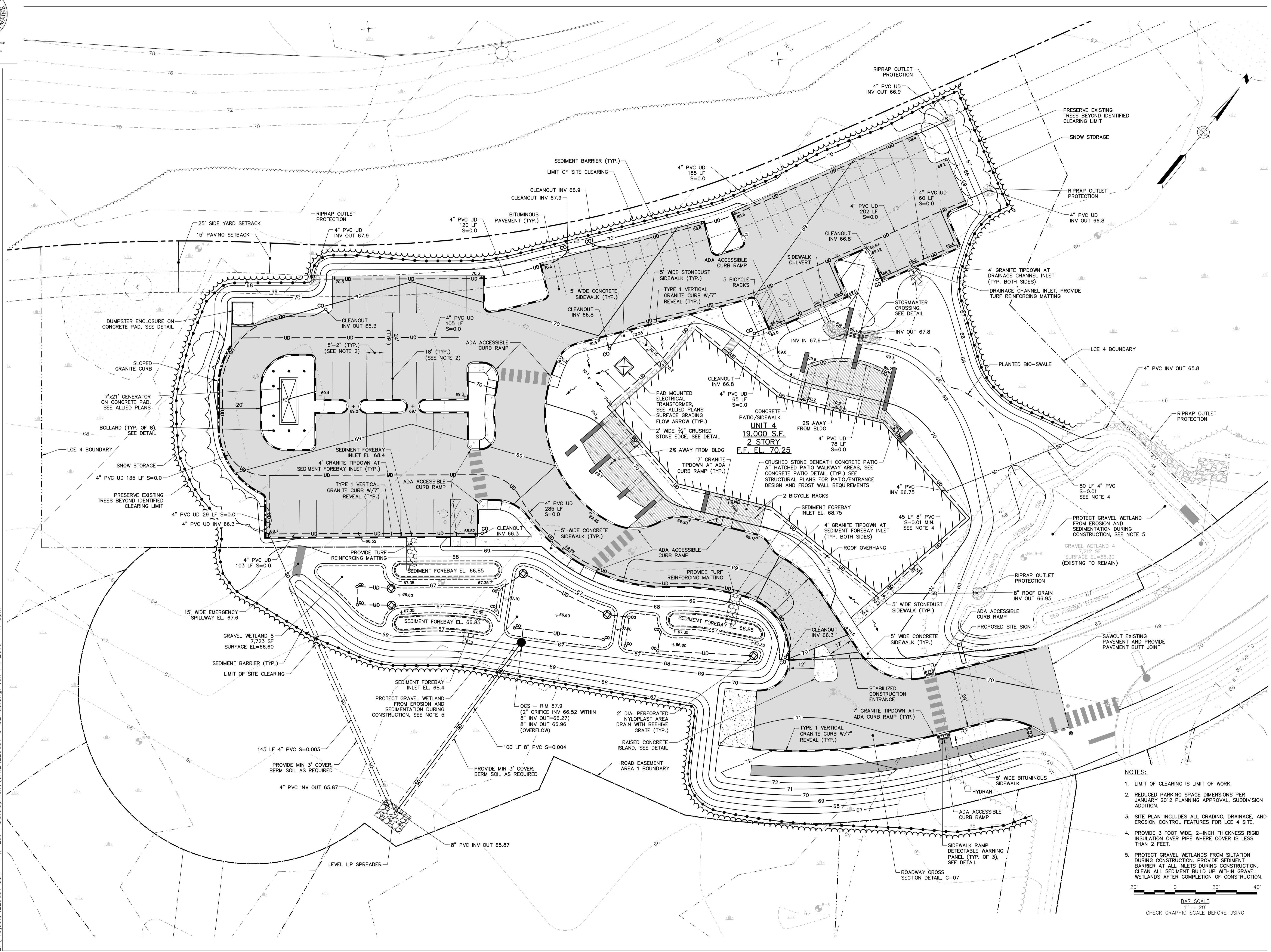
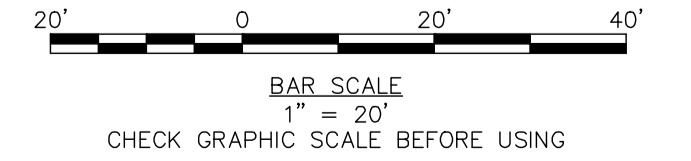




Reviewed for Code Compliance
Inspection Division
Approved with Conditions
Date: 03/24/16



- NOTES:**
- LIMIT OF CLEARING IS LIMIT OF WORK.
 - REDUCED PARKING SPACE DIMENSIONS PER JANUARY 2012 PLANNING APPROVAL, SUBDIVISION ADDITION.
 - SITE PLAN INCLUDES ALL GRADING, DRAINAGE, AND EROSION CONTROL FEATURES FOR LCE 4 SITE.
 - PROVIDE 3 FOOT WIDE, 2-INCH THICKNESS RIGID INSULATION OVER PIPE WHERE COVER IS LESS THAN 2 FEET.
 - PROTECT GRAVEL WETLANDS FROM SILTATION DURING CONSTRUCTION. PROVIDE SEDIMENT BARRIER AT ALL INLETS DURING CONSTRUCTION. CLEAN ALL SEDIMENT BUILD UP WITHIN GRAVEL WETLANDS AFTER COMPLETION OF CONSTRUCTION.

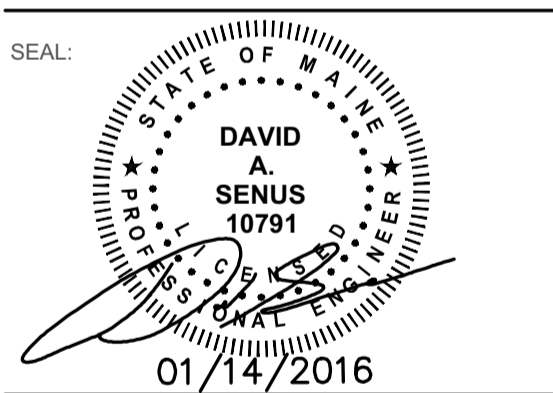


75 York Street
Portland, Maine 04101
simonsarchitects.com
207.772.4656



41 Hutchins Drive
Portland, Maine 04102
800.426.4262 | www.woodardcurran.com

PROJECT NAME:
PATRONS OXFORD OFFICES
97 TECHNOLOGY PARK DRIVE
PORTLAND, MAINE 04102
UNITED STATES OF AMERICA



THIS DRAWING IS THE PROPERTY OF SCOTT SIMONS ARCHITECTS (SSA) AND IS NOT TO BE COPIED OR REPRODUCED IN PART OR WHOLE.
2016 © SCOTT SIMONS ARCHITECTS, LLC

REVISION:

| | |
|---|--|
| 1 | |
| 2 | |
| 3 | |
| 4 | |
| 5 | |
| 6 | |

DATE OF ISSUE: 14 JANUARY 2016
PROJECT NUMBER: 2105-0100 PATRONS OXFORD
STATUS: CONSTRUCTION DOCUMENTS

LCE 4 SITE PLAN

C-02

E:\Projects\229001_SSA - PTP Lot 1_Development\CIVIL\229001-C-02_03.dwg, Jan 14, 2016 1:49pm