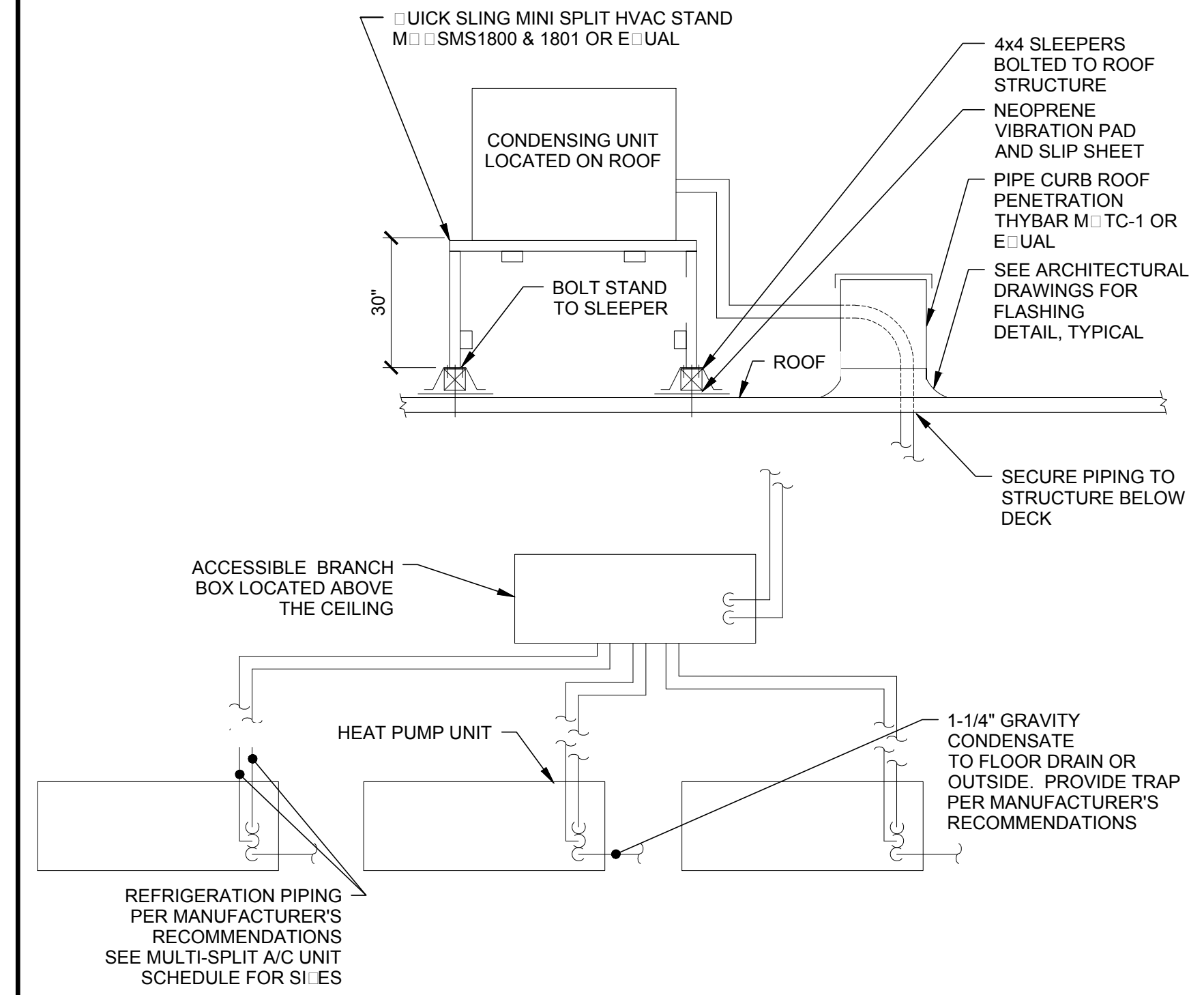
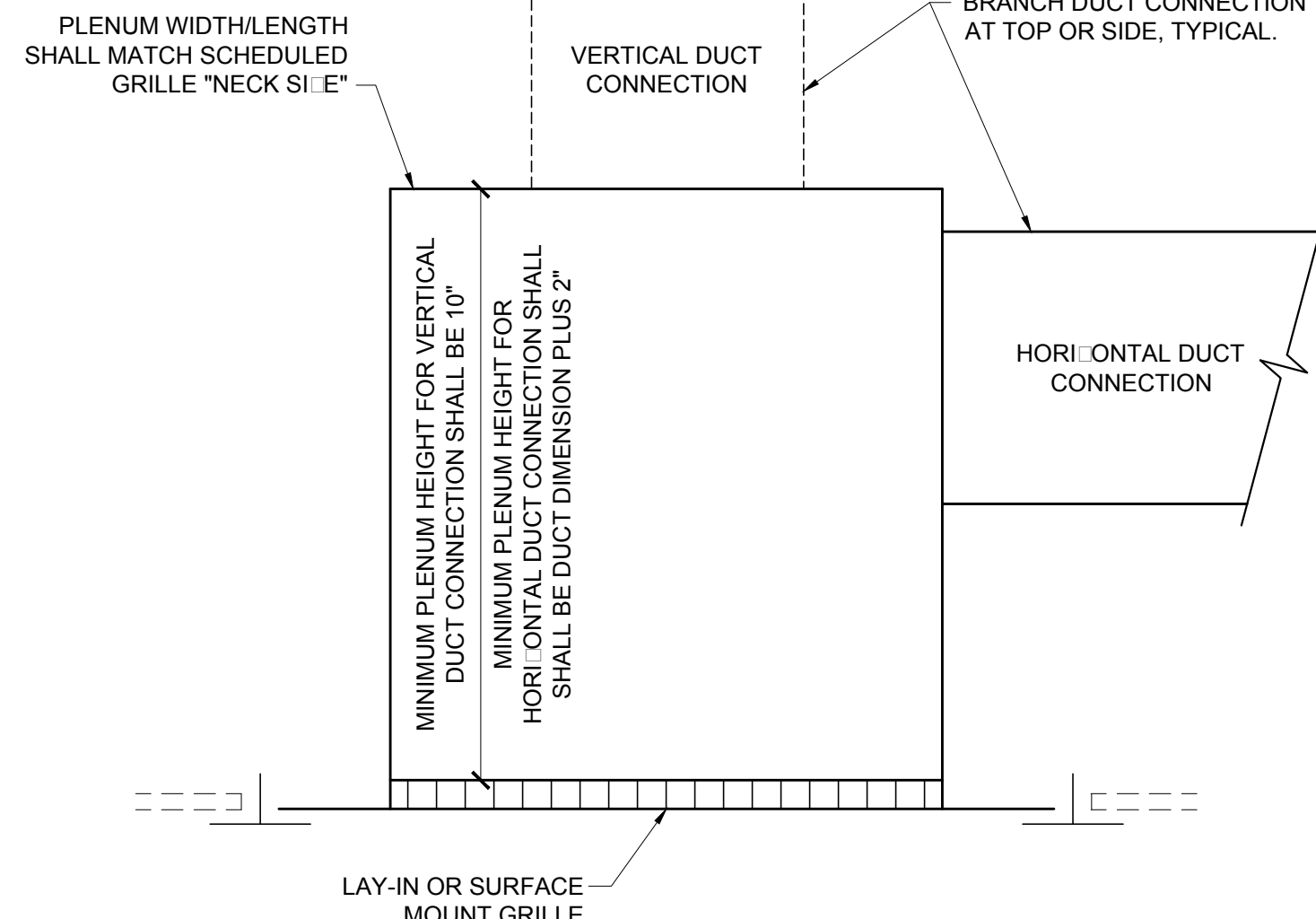


FLEX DUCT NOTES:

1. FLEX DUCT SHOULD EXTEND STRAIGHT FOR SEVERAL INCHES FROM A CONNECTION BEFORE BENDING.
2. FLEX DUCT SHALL HAVE A MAXIMUM OF 1/2" SAG PER FOOT OF SUPPORT SPACING.
3. CLOSER MAXIMUM INTERVALS MAY BE SPECIFIED AS A CONDITION OF U.L. LISTING, PARTICULARLY IN FIRE RATED FLOOR-CEILING ASSEMBLIES.
4. MINIMUM κ BEND RADIUS (R) SHALL BE EQUAL TO OR GREATER THAN THE FLEX DUCT DIAMETER (D), TYPICAL.



E1 DETAIL - SUPPLY AIR BRANCH CONNECTION

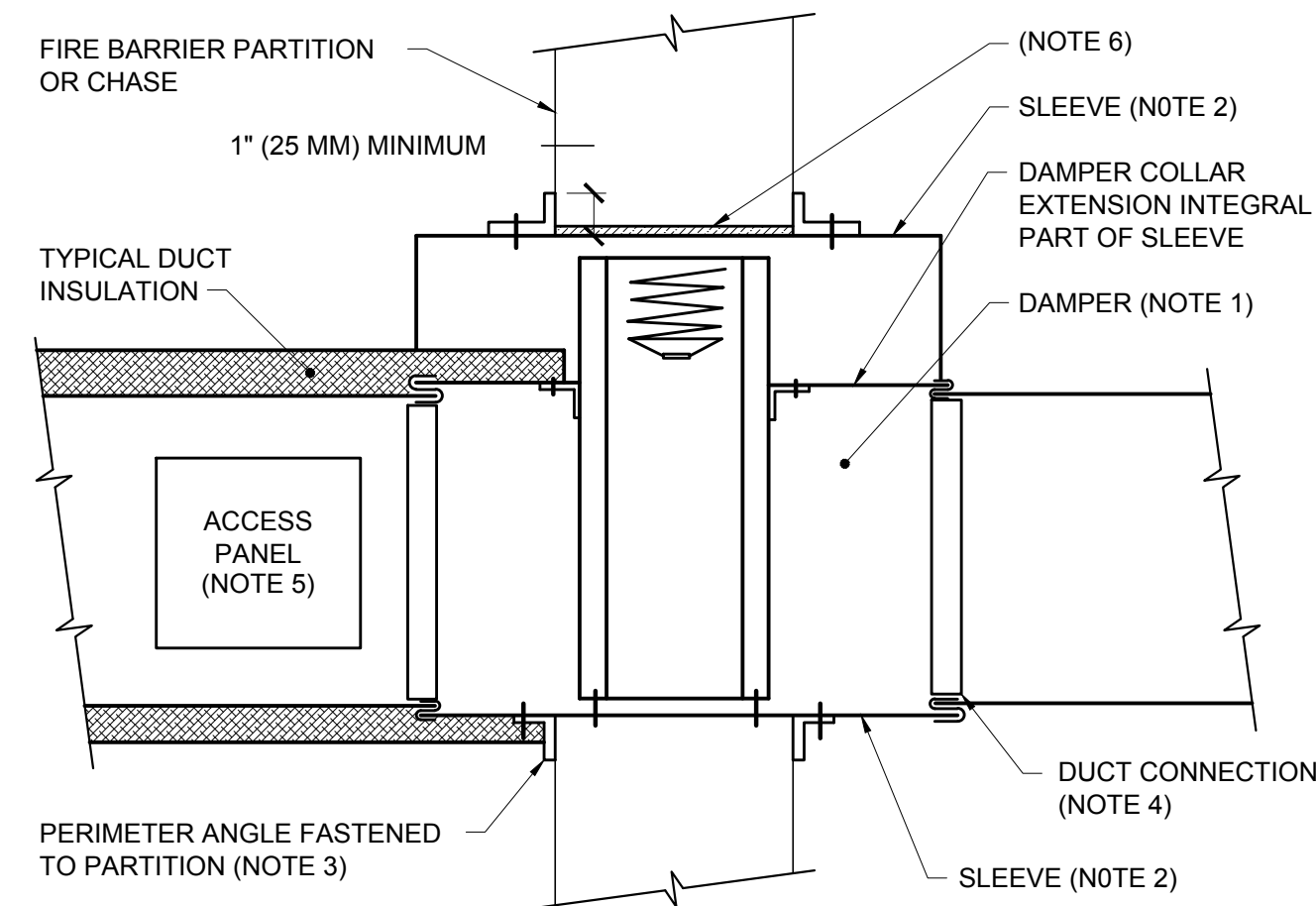
NO SCALE

E5 DETAIL - RETURN AIR REGISTER BOOT

NO SCALE

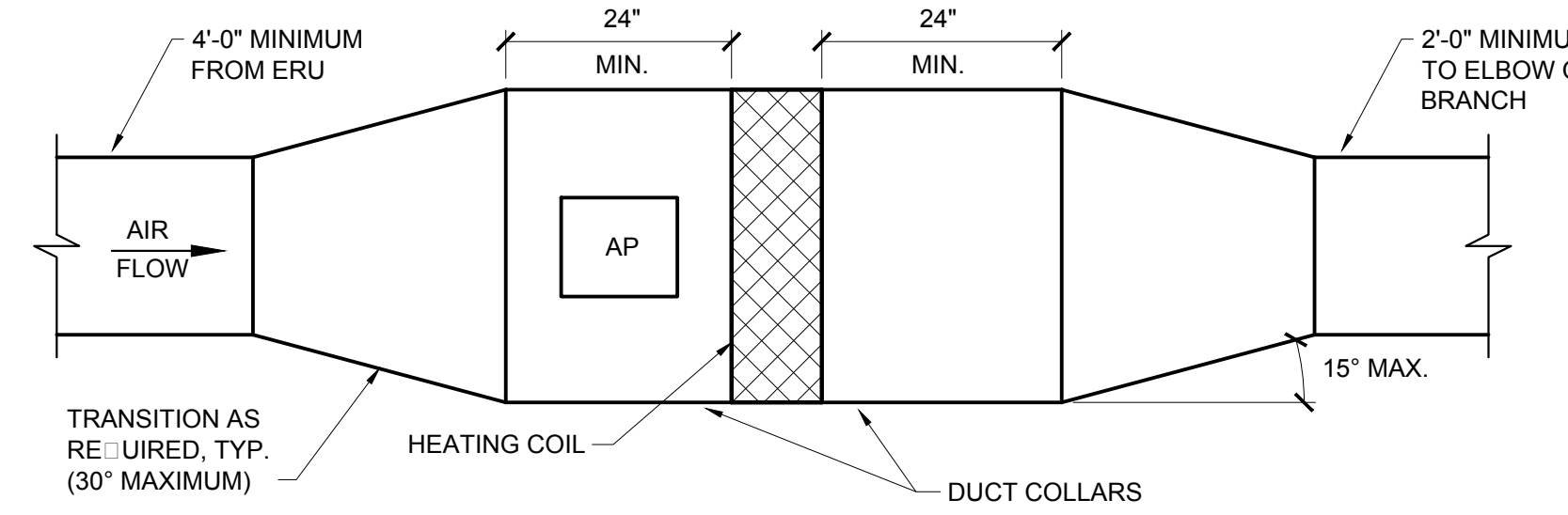
E8 DETAIL - HEAT PUMP AND CONDENSING UNIT PIPING

NO SCALE



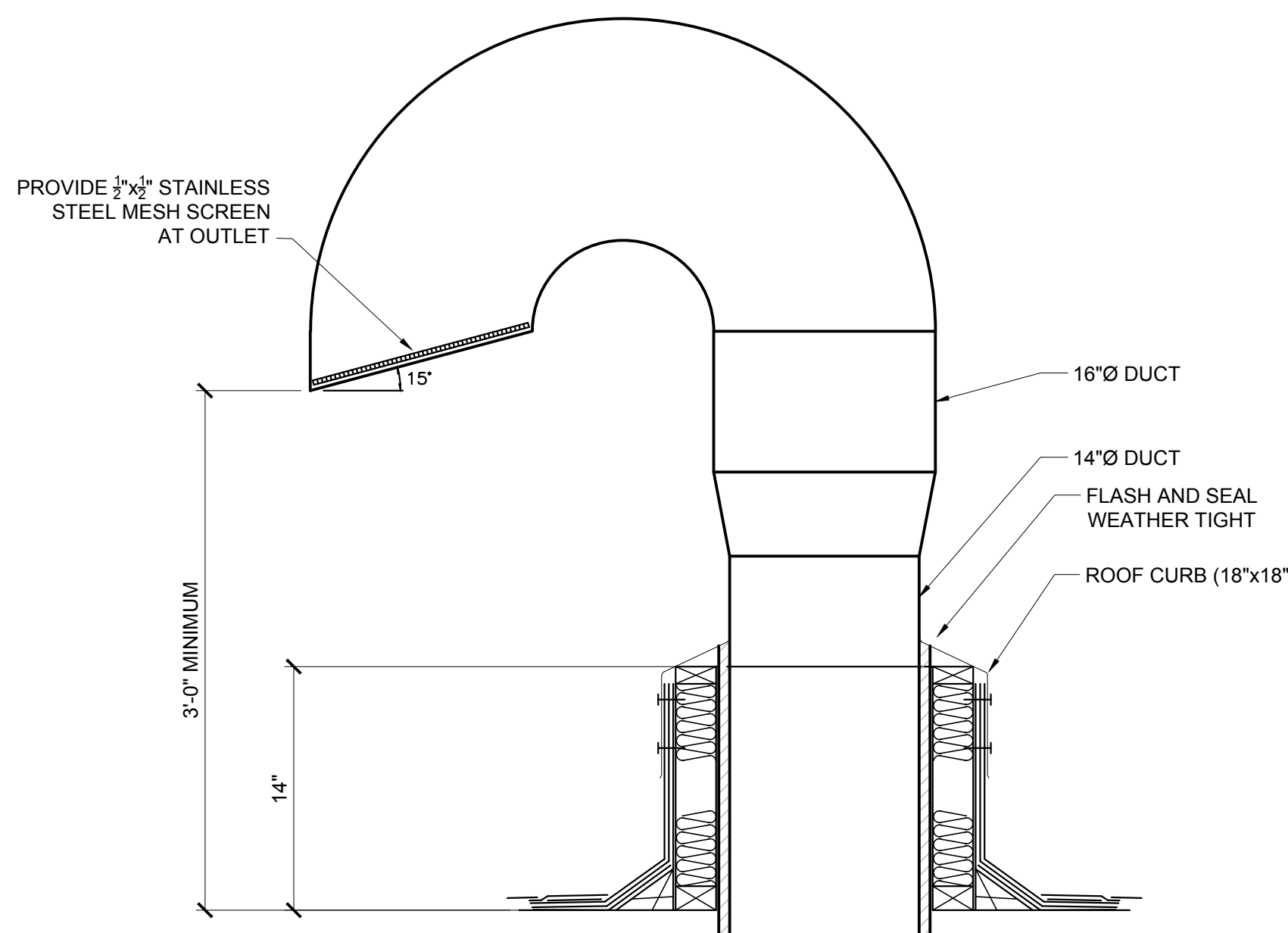
NOTES:

1. A VERTICAL DAMPER IS SHOWN. HORIZONTAL DAMPER INSTALLATION IS SIMILAR. FOLLOW MANUFACTURER'S INSTRUCTIONS, INCLUDING FASTENER OPTIONS AND GAGES FOR SLEEVE AND PERIMETER ANGLES. FIRE DAMPERS MUST BE INSTALLED IN THE PARTITION OR FLOOR AND NOT OUTSIDE THE PENETRATION.
2. GALVANIZED SLEEVE: GAGE NOT LESS THAN CONNECTING DUCT. FASTEN SLEEVE TO DAMPER FRAME AND TO PERIMETER ANGLES.
3. PERIMETER ANGLES: GALVANIZED STEEL, NOT LESS THAN 1-1/2" x 1-1/2" (40x40 MM), 14 GAGE, TO PROVIDE 1" (25 MM) MINIMUM OVERLAP OF OPENING ON ALL 4 SIDES.
4. BREAKAWAY DUCT CONNECTION: CONTRACTOR'S OPTION OF TYPES SHOWN IN SMACNA LPDS, FIG. 2-13. SEAL JOINTS.
5. ACCESS PANELS: SIZE AND LOCATION TO PERMIT SERVICING THE FUSIBLE LINK OR LINKS.



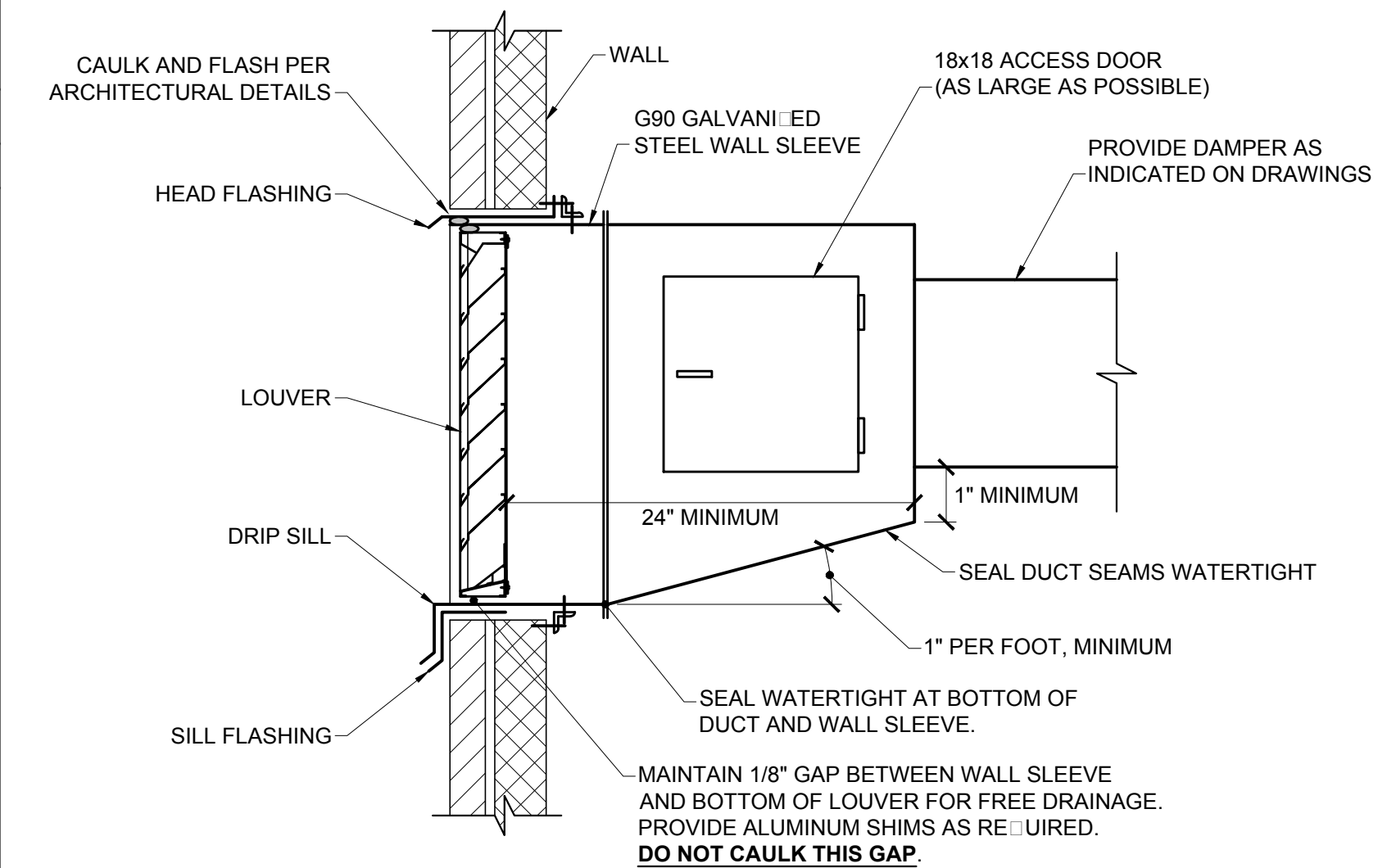
C5 DETAIL - AIR INTAKE AND EXHAUST GOOSENECK

NO SCALE



A5 DETAIL - AIR INTAKE AND EXHAUST GOOSENECK

NO SCALE



A8 DETAIL - EXTERIOR LOUVER INSTALLATION

NO SCALE

SEAL:



THIS DRAWING IS THE PROPERTY OF SCOTT SIMONS ARCHITECTS (SSA) AND IS NOT TO BE COPIED OR REPRODUCED IN PART OR WHOLE
© 2016 © SCOTT SIMONS ARCHITECTS, LLC

REVISION:	14 MARCH 2016
ADDENDUM 04	DATE
2	DATE
3	DATE
4	DATE
5	DATE
6	DATE

DATE OF ISSUE:	14 March 2016
PROJECT NUMBER:	2105-0100 Patrons Oxford
STATUS:	CONSTRUCTION DOCUMENTS CONFORMANCE SET

MECHANICAL DETAILS