

REGISTERS - GRILLES - DIFFUSERS (RGD) SCHEDULE										
TAG	PRICE MODEL	TYPE	DAMPER	NECK SIZE	FACE SIZE	CFM RANGE	MAX TOTAL P.D. (IN.W.C.)	MAX NC LEVEL	BLOW	NOTES
S-1	SCDA	SQ. CEILING SUPPLY DIFFUSER	YES	6" DIA	12" X 12"	0-150	0.07"	16	4-WAY	
S-2	SCDA	SQ. CEILING SUPPLY DIFFUSER	YES	8" DIA	24" X 24"	151-275	0.07"	19	4-WAY	
S-3	SCDA	SQ. CEILING SUPPLY DIFFUSER	YES	10" DIA	24" X 24"	276-450	0.07"	22	4-WAY	
S-4	520D	STEEL DOUBLE DEFL. SUPPLY	YES	8" X 6"	8" X 8"	0-130	0.10"	20	ADJUSTABLE	
S-5	520D	STEEL DOUBLE DEFL. SUPPLY	YES	8" X 6"	10" X 8"	131-180	0.10"	21	ADJUSTABLE	
S-6	520D	STEEL DOUBLE DEFL. SUPPLY	YES	12" X 6"	14" X 8"	181-300	0.10"	21	ADJUSTABLE	
S-7	520D	STEEL DOUBLE DEFL. SUPPLY	YES	18" X 6"	20" X 8"	301-425	0.10"	22	ADJUSTABLE	
S-8	SDS100	SLOT DIFFUSER - 3 X 1" SLOTS	YES	4-FT SLOT	48" X 5-3/8"	250 - 300	0.05"	22	ADJUSTABLE	WOOD CEILING
S-9	LBPH-16A	ALUM FLOOR GRILLE	NO	12" X 4"	13-5/8" X 5-5/8"	0-100	0.02"	15	SURFACE MT.	15 - DEGREE
R-1	630DAL	ALUM RETURN REGISTER, 3/4" SPACING, 35 DEG VANES	YES	8" X 8"	9" X 9"	0-110	0.05"	20	-----	6" DIA RUNOUT
R-2	630DAL	ALUM RETURN REGISTER, 3/4" SPACING, 35 DEG VANES	YES	12" X 12"	13" X 13"	171-220	0.05"	20	-----	8" DIA RUNOUT
R-3	630DAL	ALUM RETURN REGISTER, 3/4" SPACING, 35 DEG VANES	YES	12" X 12"	13" X 13"	221-360	0.02"	20	-----	10" DIA RUNOUT
R-4	630D	ALUM RETURN GRILLE, 3/4" SPACING, 35 DEG VANES	NO	22" X 10"	23" X 11"	361-600	0.02"	20	-----	12" DIA RUNOUT
R-5	630D	ALUM RETURN GRILLE, 3/4" SPACING, 35 DEG VANES	NO	23" X 23"	24" X 24"	601-1,150	0.02"	22	-----	14" DIA RUNOUT
R-6	630DAL	ALUM RETURN REGISTER, 3/4" SPACING, 35 DEG VANES	NO	18" X 6"	19" X 7"	250	0.02"	20	-----	
R-7	630DAL	ALUM RETURN REGISTER, 3/4" SPACING, 35 DEG VANES	NO	22" X 6"	23" X 7"	251-325	0.02"	20	-----	
R-8	SDR100	SLOT RETURN - 3 X 1" SLOTS	YES	5-FT SLOT	60" X 5-3/8"	250 - 300	0.05"	22	-----	WOOD CEILING

LOUVER SCHEDULE													
TAG	MAKE - MODEL	AIR SYSTEM	DUTY	CFM	DIMENSIONS				BEGINNING POINT OF WATER PENETRATION AT 0.01 OZ/SF	MAX P.D. MAX W.C.	NOTES		
					WIDTH (in.)	HEIGHT (in.)	MIN. FREE AREA (SF)	NET VELOCITY (FT/MIN)				% FREE AREA	BLADE DEPTH
L-1	RUSKIN ELF445DX	ERU-1 WEST	INTAKE		42	24				4"		1	
L-2	RUSKIN ELF445DX	ERU-1 WEST	EXHAUST		48	24				4"		1	
		ERU-1 WEST	INTAKE	695	42	18	2.23	311.7	42.5%	4"	1,075FPM	0.02	2
		ERU-1 WEST	EXHAUST	690	48	18	2.66	259.4	44.3%	4"	1,075FPM	0.02	2
L-3	RUSKIN ELF445DX	ERU-2 EAST	INTAKE	700	42	18	2.23	313.9	42.5%	4"	1,075FPM	0.02	
L-4	RUSKIN ELF445DX	ERU-2 EAST	EXHAUST	685	42	18	2.23	307.2	42.5%	4"	1,075FPM	0.02	

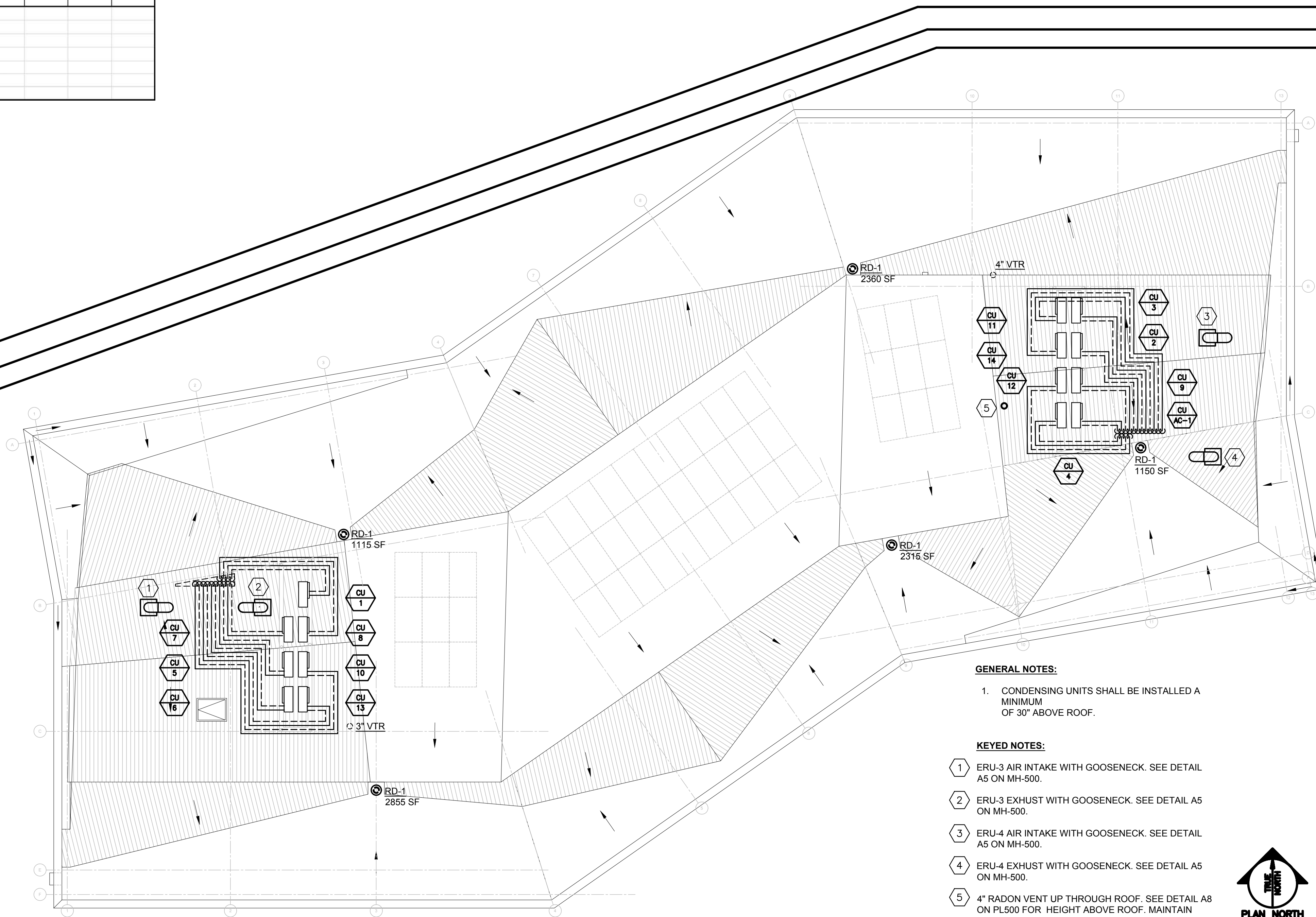
NOTES:
1. OVERALL DIMENSIONS - TOP 6" (+/-) OF LOUVER SHALL BE AN INSULATED/BLANKED PANEL.
2. LOUVER PERFORMANCE - ACTIVE AREA OF LOUVERS - 18" HIGH

ELECTRIC DUCT HEATING COIL SCHEDULE													
TAG	MANUFACTURER - MODEL	SERVES	AIRFLOW W	LENGTH	HEIGHT	FACE VEL	EDB	LDB	MAX APD	BTUH	KW	AMPS	VOLT / PH
DC-1	GREENHECK IDHC	ERU-1	695	14	14	511	40	75	0.2"	26,271	7.7	20.8	208/3
DC-2	GREENHECK IDHC	ERU-2	700	14	14	514	40	75	0.2"	26,460	7.8	17.5	208/3
DC-3	GREENHECK IDHC	ERU-3	575	14	14	422	40	75	0.2"	21,735	6.4	15.0	208/3
DC-4	GREENHECK IDHC	ERU-4	685	14	14	503	40	75	0.2"	25,893	7.6	17.0	208/3

NOTES:
1. Provide SCR Heating Control
2. Provide disconnect switch.
3. Accessories: Airflow switch, duct thermostat, magnetic contactor, and pilot light.
4. Coordinate control box location - LH or RH for proper maintenance access.
5. Provide duct mounted thermostat

ELECTRIC HEATER SCHEDULE									
TAG	SERVES	INDEECO MODEL	VOLTS	PHASE	WATTS	AMPS	CFM	BTUH	WEIGHT (LBS.)
EH-1	STAIR ST02	CCI-931U03000V	208	1	3,000	11.2	160	10,239	26
EH-2	ELEC 124	CCI-931U03000V	208	1	3,000	11.2	160	10,239	26
EH-3	MUDROOM 110	CCI-931U03000V	208	1	3,000	11.2	160	10,239	26
EH-4	SHWR 119	CCI-931U03000V	208	1	3,000	11.2	160	10,239	26
EH-5	SHWR 120	CCI-931U03000V	208	1	3,000	11.2	160	10,239	26
EH-6	SHWR 122	CCI-931U03000V	208	1	3,000	11.2	160	10,239	26
EH-7	STAIR ST03	CCI-931U03000V	208	1	3,000	11.2	160	10,239	26
EH-8	SPRK 123	CCI-931U03000V	208	1	3,000	11.2	160	10,239	26

NOTES: HEATERS SHALL BE WALL OR CEILING MOUNTED AS INDICATED. PROVIDE FACTORY DISCONNECT SWITCHES



- GENERAL NOTES:**
- CONDENSING UNITS SHALL BE INSTALLED A MINIMUM OF 30" ABOVE ROOF.
- KEYED NOTES:**
- ERU-3 AIR INTAKE WITH GOOSENECK. SEE DETAIL A5 ON MH-500.
 - ERU-3 EXHAUST WITH GOOSENECK. SEE DETAIL A5 ON MH-500.
 - ERU-4 AIR INTAKE WITH GOOSENECK. SEE DETAIL A5 ON MH-500.
 - ERU-4 EXHAUST WITH GOOSENECK. SEE DETAIL A5 ON MH-500.
 - 4" RADON VENT UP THROUGH ROOF. SEE DETAIL A8 ON PL500 FOR HEIGHT ABOVE ROOF. MAINTAIN 30'-0" FROM OUTSIDE AIR INTAKE DUCT.



C1 MECHANICAL SCHEDULES
NO SCALE

A1 ROOF PLAN - MECHANICAL
1/8"=1'-0"

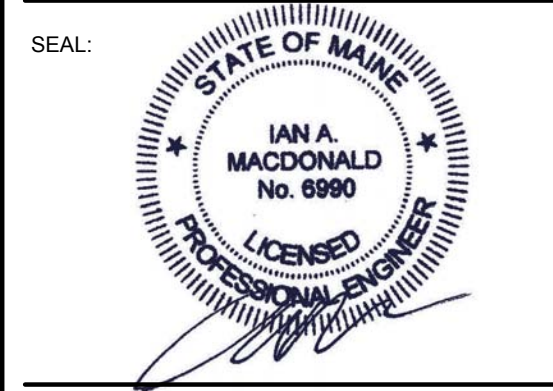


75 Yor Street
Portland, Maine 04101
simonsarchitects.com
207.772.4656

Allied Engineering
Structural Mechanical Electrical Commissioning
160 Veranda Street
Portland, Maine 04103
T: 207.221.2260
F: 207.221.2266
Web: www.allied-eng.com

Allied Project No: 15-023
Cad File: 14023_M.dwg

PROJECT NAME:
PATRONS OXFORD OFFICES
97 TECHNOLOGY PARK DRIVE
PORTLAND, MAINE 04102
UNITED STATES OF AMERICA



THIS DRAWING IS THE PROPERTY OF SCOTT SIMONS ARCHITECTS (SSA) AND IS NOT TO BE COPIED OR REPRODUCED IN PART OR WHOLE
© 2016 © SCOTT SIMONS ARCHITECTS, LLC

REVISION:	DATE
ADDENDUM 04	14 MARCH 2016
2	DATE
3	DATE
4	DATE
5	DATE
6	DATE

DATE OF ISSUE: 14 March 2016
PROJECT NUMBER: 2105-0100 Patrons Oxford
STATUS: CONSTRUCTION DOCUMENTS CONFORMANCE SET

ROOF MECHANICAL HVAC AND PIPING PLAN

MH-101
CONFORMANCE SET

N:\Projects\2015\15023 - Patrons Oxford Insurance Building\00 Drawing\Files\15023_M.dwg Mar 14, 2016 4:41pm