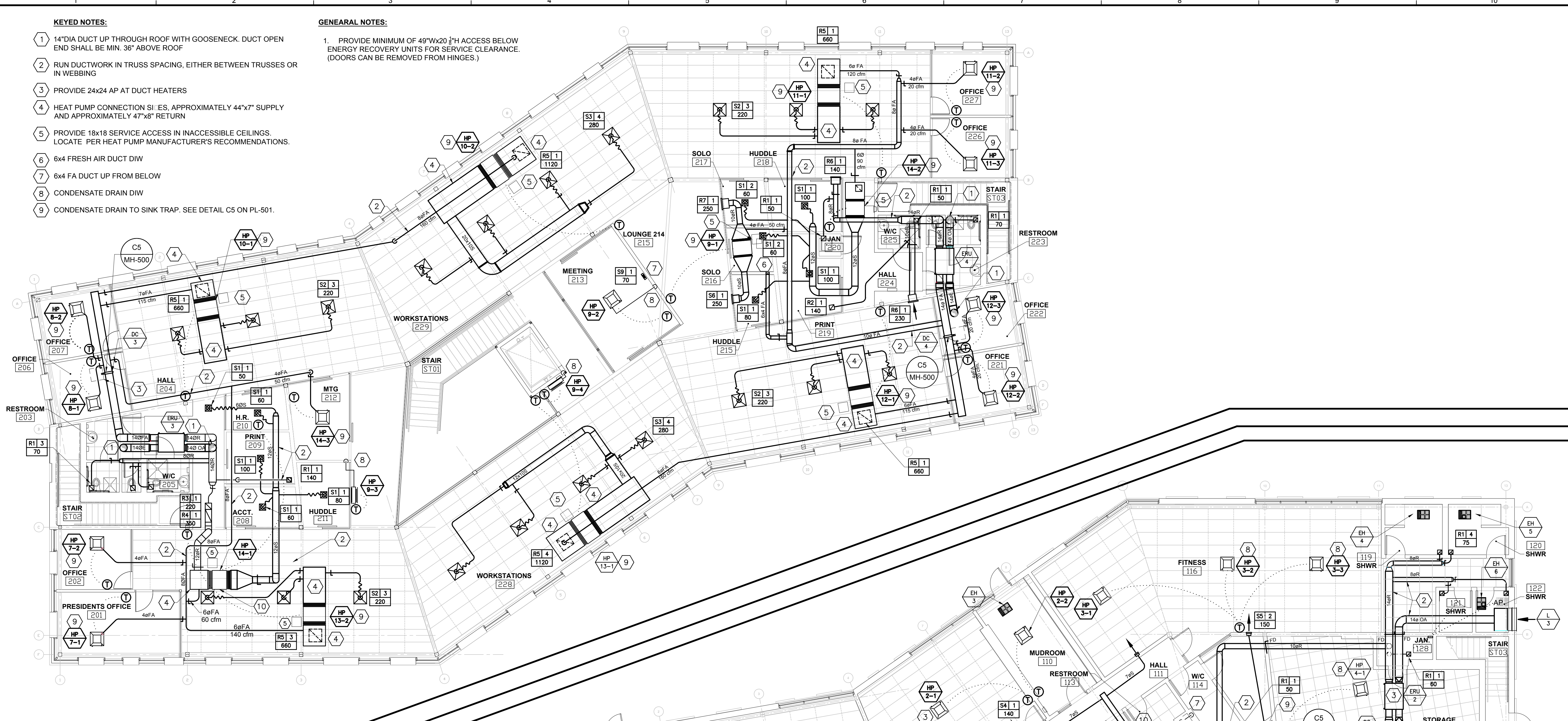


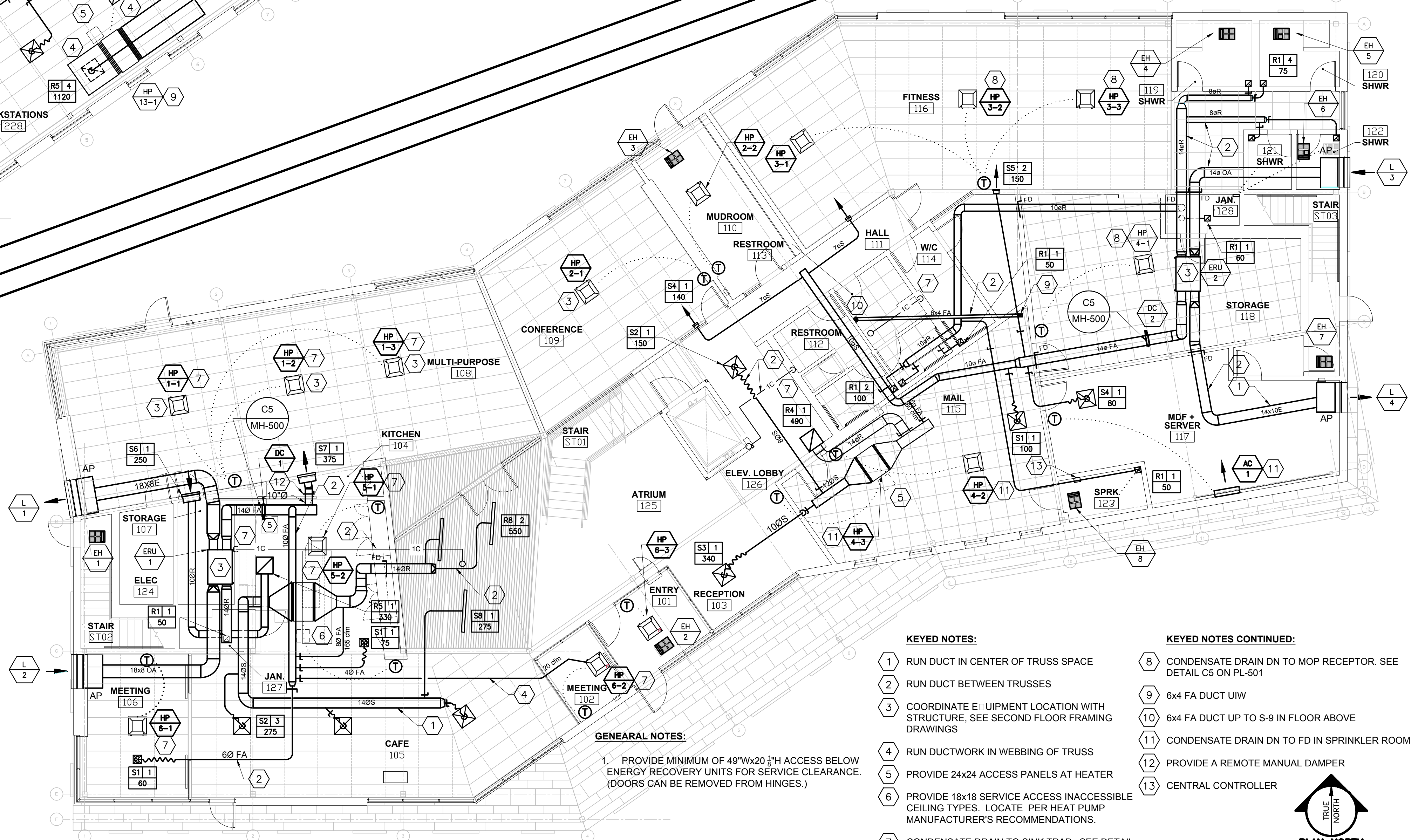
- KEYED NOTES:**
- 14" DIA DUCT UP THROUGH ROOF WITH GOOSENECK. DUCT OPEN END SHALL BE MIN. 36" ABOVE ROOF
 - RUN DUCTWORK IN TRUSS SPACING, EITHER BETWEEN TRUSSES OR IN WEBBING
 - PROVIDE 24x24 AP AT DUCT HEATERS
 - HEAT PUMP CONNECTION SIZES, APPROXIMATELY 44"x7" SUPPLY AND APPROXIMATELY 47"x8" RETURN
 - PROVIDE 18x18 SERVICE ACCESS IN INACCESSIBLE CEILINGS. LOCATE PER HEAT PUMP MANUFACTURER'S RECOMMENDATIONS.
 - 6x4 FRESH AIR DUCT DIW
 - 6x4 FA DUCT UP FROM BELOW
 - CONDENSATE DRAIN DIW
 - CONDENSATE DRAIN TO SINK TRAP. SEE DETAIL C5 ON PL-501.

- GENERAL NOTES:**
- PROVIDE MINIMUM OF 49"Wx20"H ACCESS BELOW ENERGY RECOVERY UNITS FOR SERVICE CLEARANCE. (DOORS CAN BE REMOVED FROM HINGES.)



C1 SECOND FLOOR PLAN - HVAC

1/8"=1'-0"



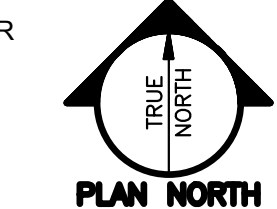
A1 FIRST FLOOR PLAN - HVAC

1/8"=1'-0"

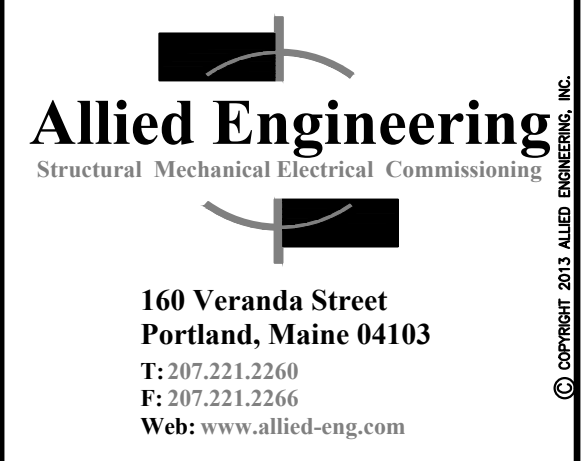
- KEYED NOTES:**
- RUN DUCT IN CENTER OF TRUSS SPACE
 - RUN DUCT BETWEEN TRUSSES
 - COORDINATE EQUIPMENT LOCATION WITH STRUCTURE. SEE SECOND FLOOR FRAMING DRAWINGS
 - RUN DUCTWORK IN WEBBING OF TRUSS
 - PROVIDE 24x24 ACCESS PANELS AT HEATER
 - PROVIDE 18x18 SERVICE ACCESS INACCESSIBLE CEILING TYPES. LOCATE PER HEAT PUMP MANUFACTURER'S RECOMMENDATIONS.
 - CONDENSATE DRAIN TO SINK TRAP. SEE DETAIL C5 ON PL-501.

- KEYED NOTES CONTINUED:**
- CONDENSATE DRAIN DN TO MOP RECEPTOR. SEE DETAIL C5 ON PL-501
 - 6x4 FA DUCT UIW
 - 6x4 FA DUCT UP TO S-9 IN FLOOR ABOVE
 - CONDENSATE DRAIN DN TO FD IN SPRINKLER ROOM
 - PROVIDE A REMOTE MANUAL DAMPER
 - CENTRAL CONTROLLER

- GENERAL NOTES:**
- PROVIDE MINIMUM OF 49"Wx20"H ACCESS BELOW ENERGY RECOVERY UNITS FOR SERVICE CLEARANCE. (DOORS CAN BE REMOVED FROM HINGES.)



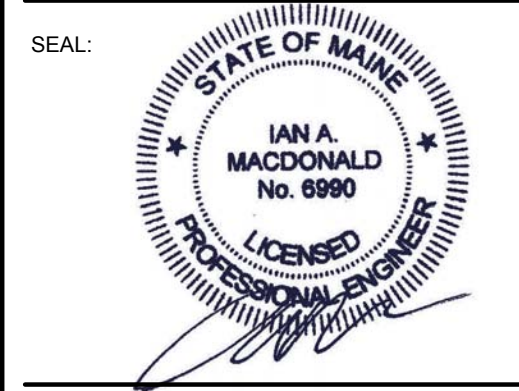
75 Yor Street
Portland, Maine 04101
simonsarchitects.com
207.772.4656



160 Veranda Street
Portland, Maine 04103
T: 207.221.2260
F: 207.221.2266
Web: www.allied-eng.com

Allied Project No: 15-023
Cad File: 14023_M.dwg

PROJECT NAME:
PATRONS OXFORD OFFICES
97 TECHNOLOGY PARK DRIVE
PORTLAND, MAINE 04102
UNITED STATES OF AMERICA



THIS DRAWING IS THE PROPERTY OF SCOTT SIMONS ARCHITECTS (SSA) AND IS NOT TO BE COPIED OR REPRODUCED IN PART OR WHOLE.
2016 © SCOTT SIMONS ARCHITECTS, LLC

REVISION:	DATE
ADDENDUM 04	14 MARCH 2016
2	DATE
3	DATE
4	DATE
5	DATE
6	DATE

DATE OF ISSUE: 14 March 2016
PROJECT NUMBER: 2105-0100 Patrons Oxford
STATUS: CONSTRUCTION DOCUMENTS CONFORMANCE SET

FIRST & SECOND FLOOR MECHANICAL HVAC PLANS

MH-100
CONFORMANCE SET

N:\Projects\2015\15023 - Patrons Oxford Insurance Building\00 Drawing\00 Drawing Files\15023_M.dwg Mar 14, 2016 4:41pm