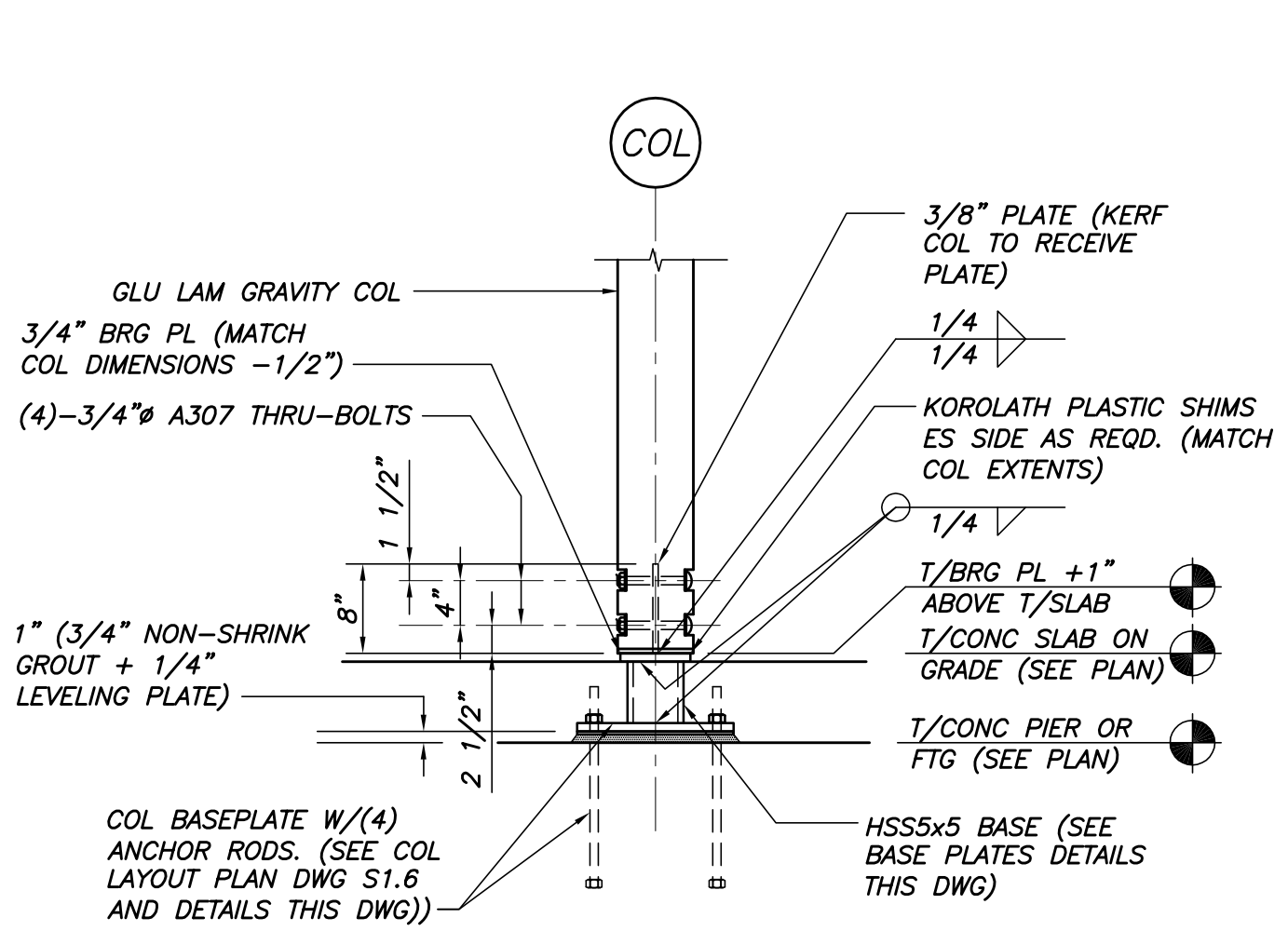


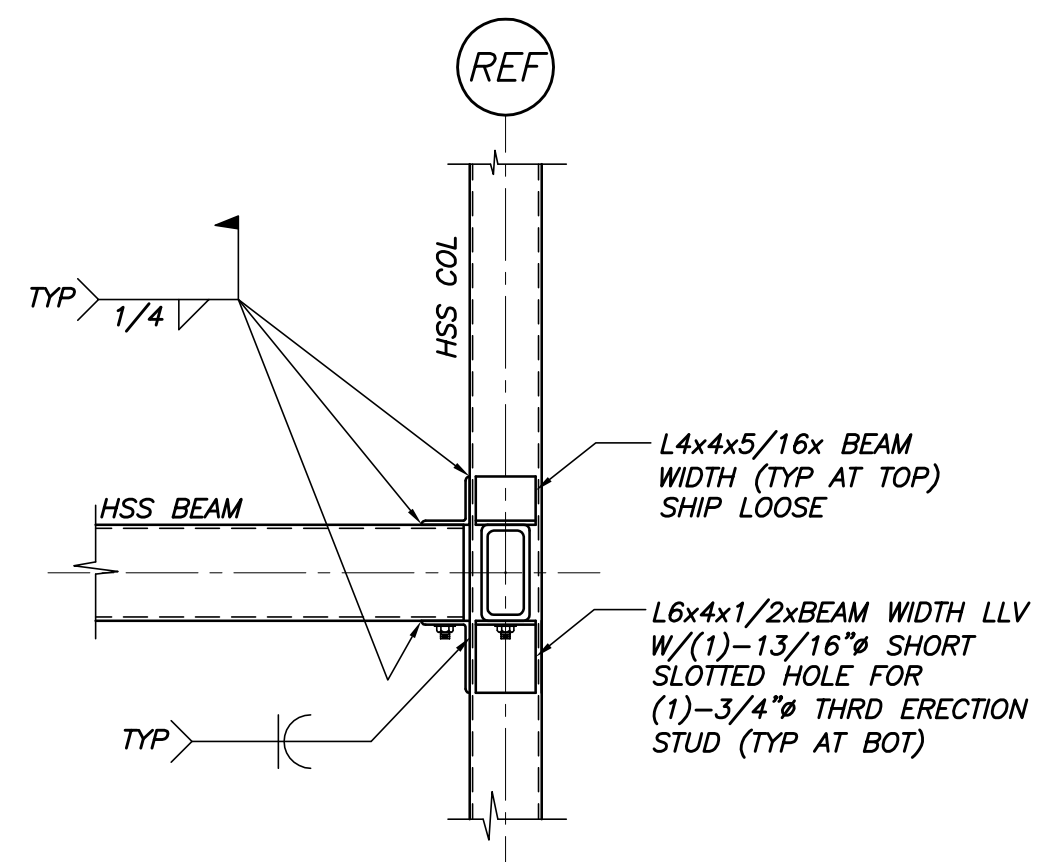
TYP HSS COL BASE DETAIL U.N.O.
N.T.S.

NOTE: COORD STEEL FINISH REQMTS W/DIVISION 9 SPECS.

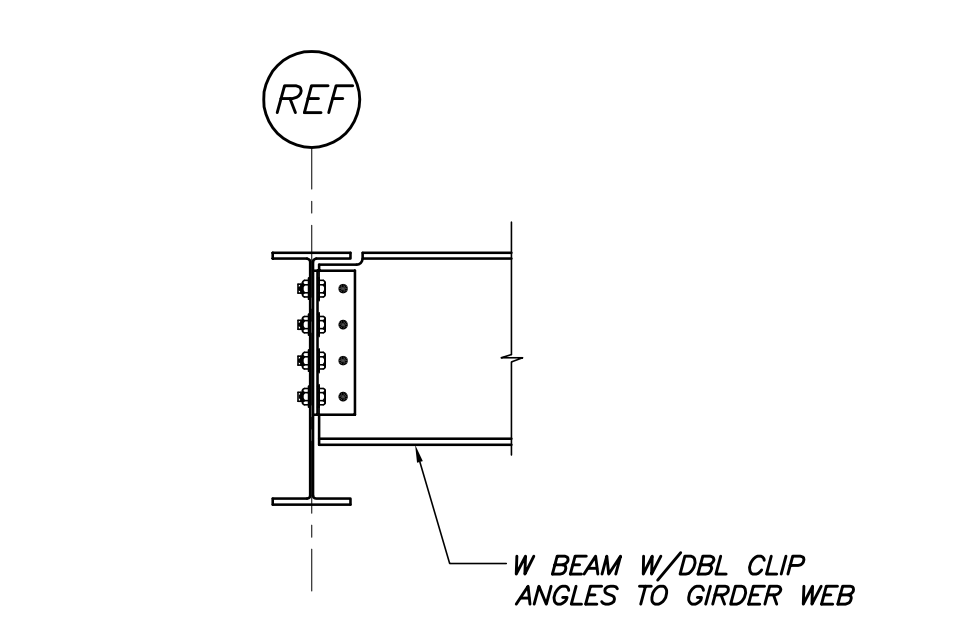


TYP GLU LAM GRAVITY COL BASE PLATE
3/4"=1'-0"

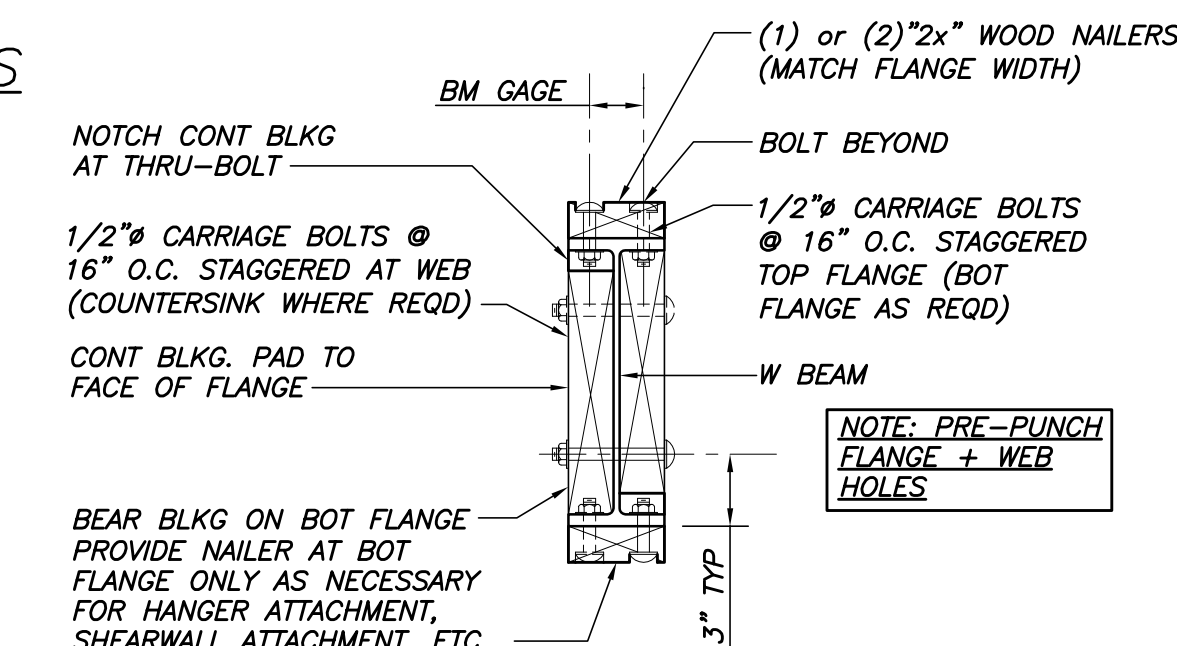
NOTE: COORD STEEL FINISH REQMTS W/DIVISION 9 SPECS.



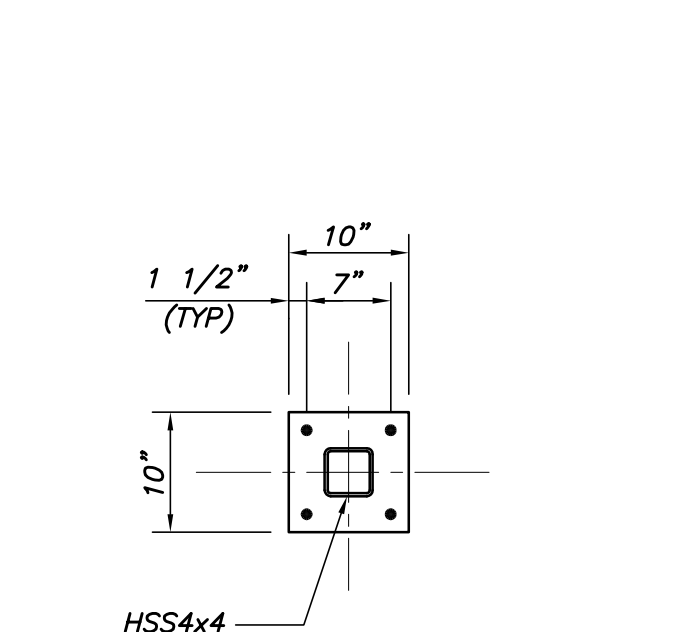
TYP HSS BEAM TO HSS COL DETAIL U.N.O.
N.T.S.



TYP BEAM/BEAM CONN DETAIL
N.T.S.

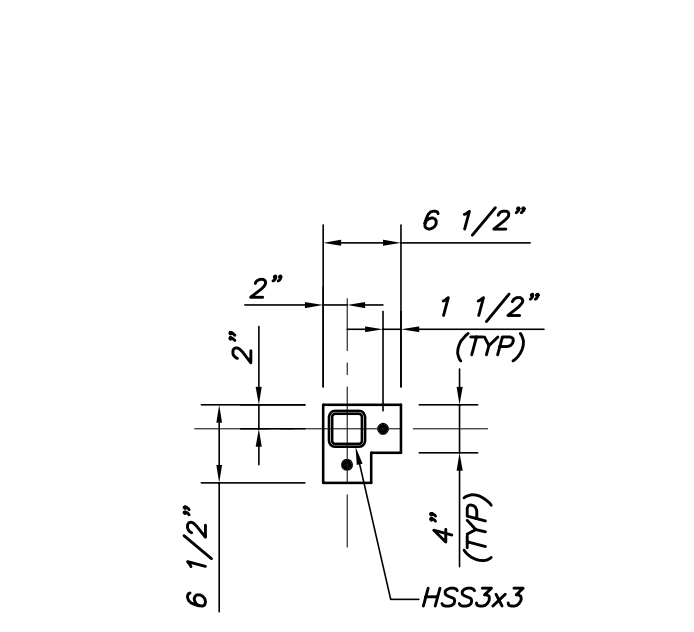


TYP WOOD NAILER/WEB BLKG TO W-BM/ANGLE DETAIL
N.T.S.



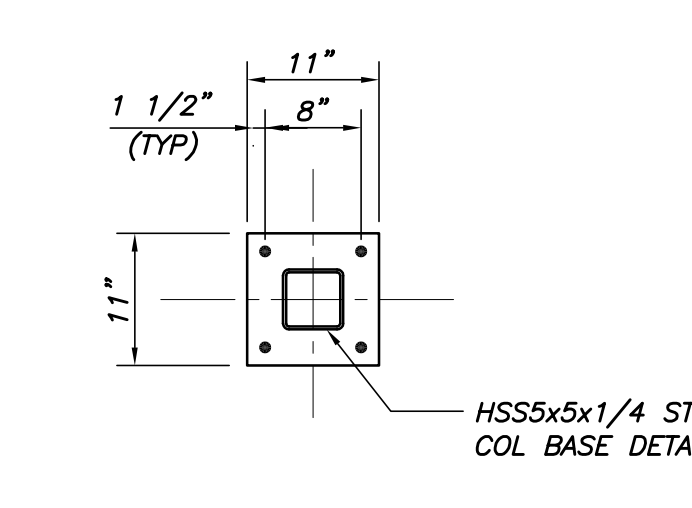
BP-A

PL 3/4x10x0-10" W/(4)-1 5/16" HOLES FOR (4)-3/4" GR 36 GALV ANCHOR RODS W/9" EMBED & 5" PROJ



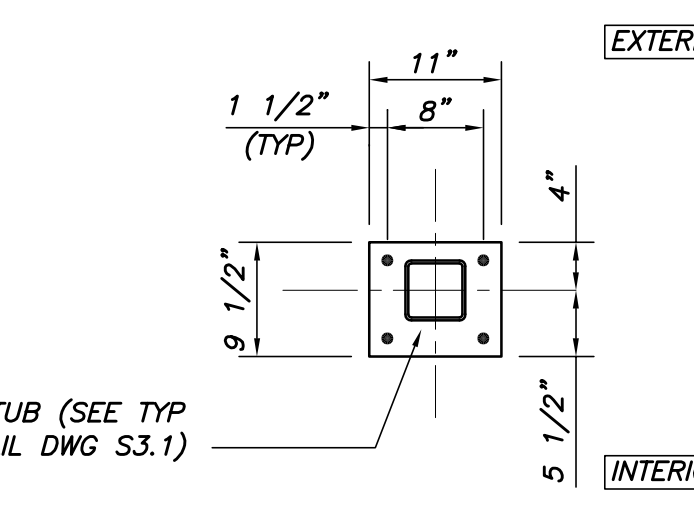
BP-B

PL 3/4x6 1/2x0-6 1/2" W/(2)-1 5/16" HOLES FOR (2)-3/4" GR 36 GALV ANCHOR RODS W/9" EMBED & 5" PROJ



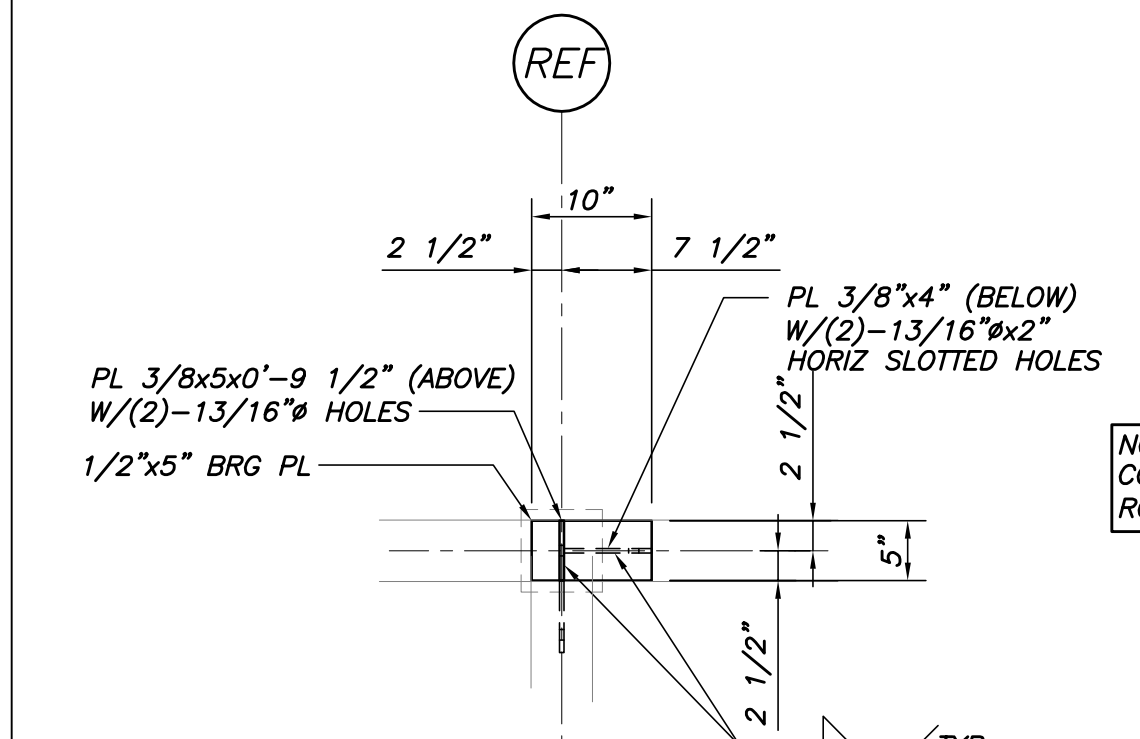
BP-C

PL 3/4x11x0-11" W/(4)-1 5/16" HOLES FOR (4)-3/4" GR 36 GALV ANCHOR RODS W/9" EMBED & 5" PROJ



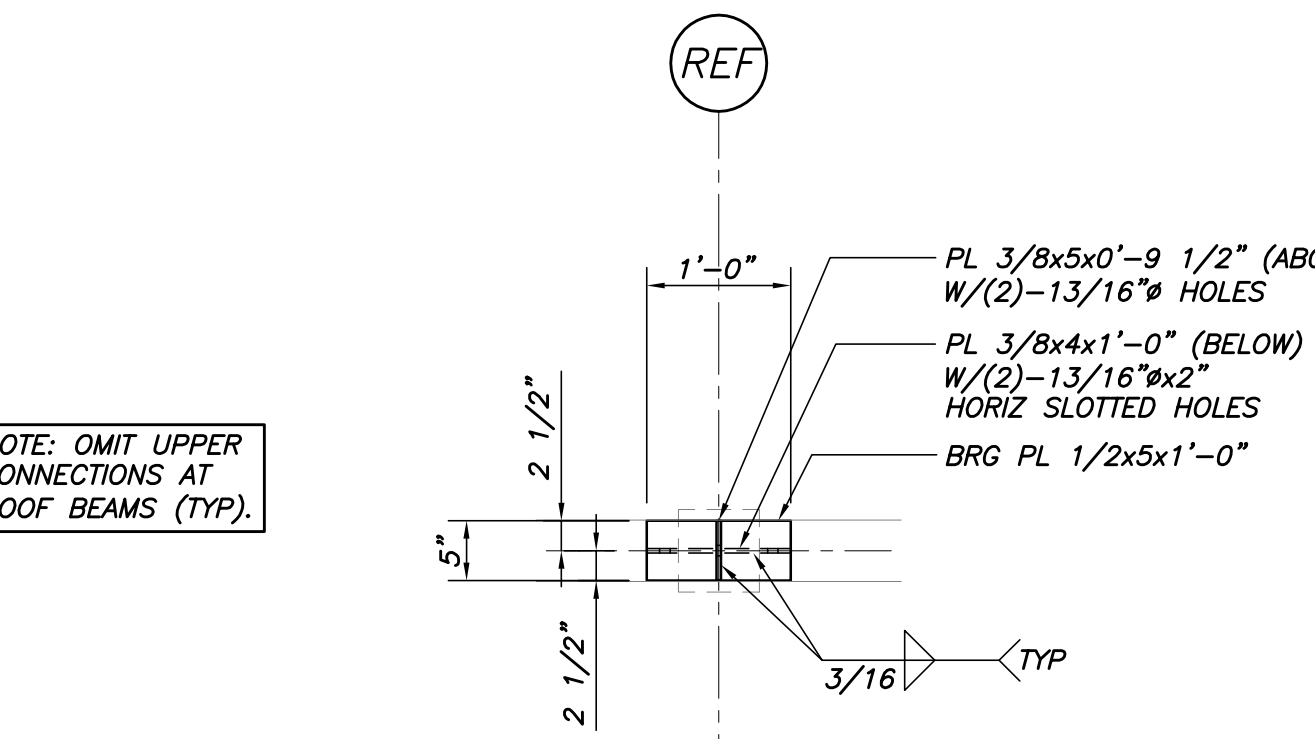
BP-D

PL 3/4x9 1/2x0-11" W/(4)-1 5/16" HOLES FOR (4)-3/4" GR 36 GALV ANCHOR RODS W/9" EMBED & 5" PROJ

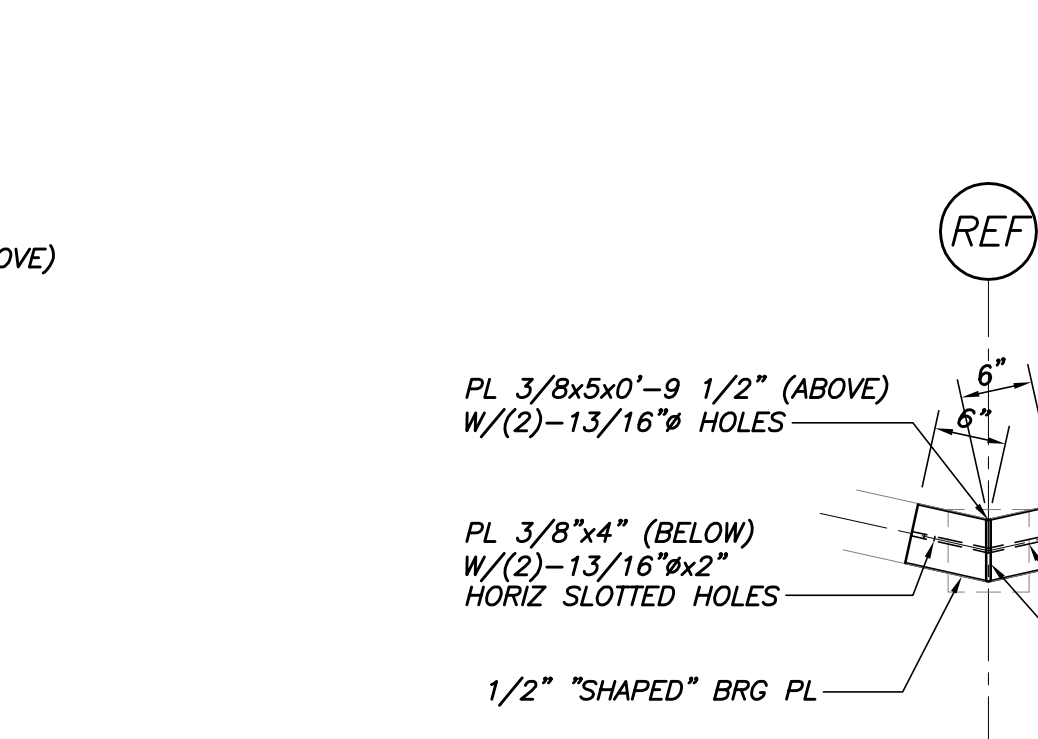


TYP GLU LAM BEAM/COL CONN AT END OR 90° CORNER
3/4"=1'-0"

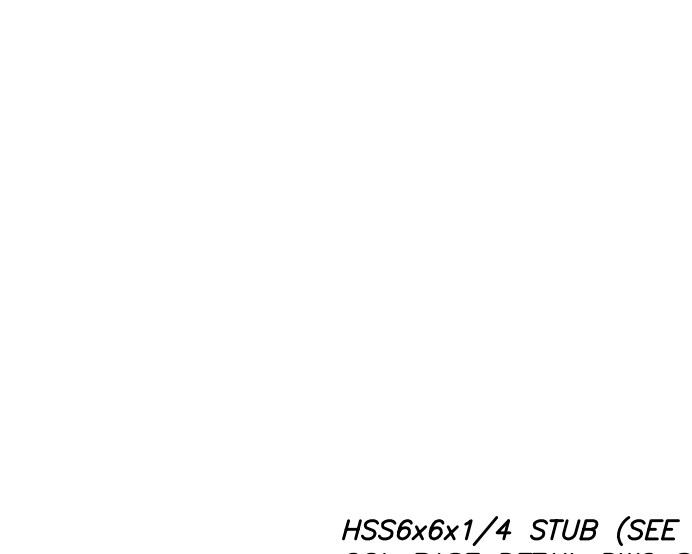
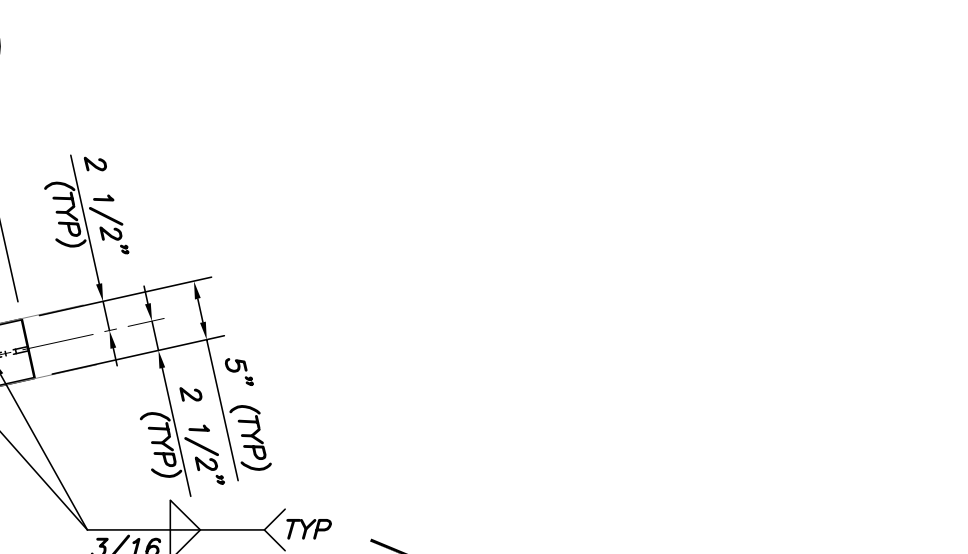
NOTE: OMIT UPPER CONNECTIONS AT ROOF BEAMS (TYP).



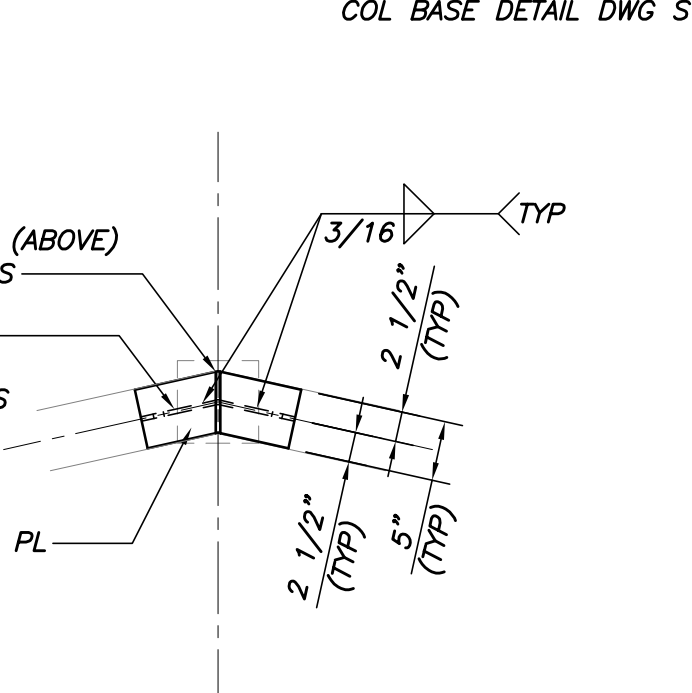
TYP GLU LAM BEAM/COL CONN
3/4"=1'-0"



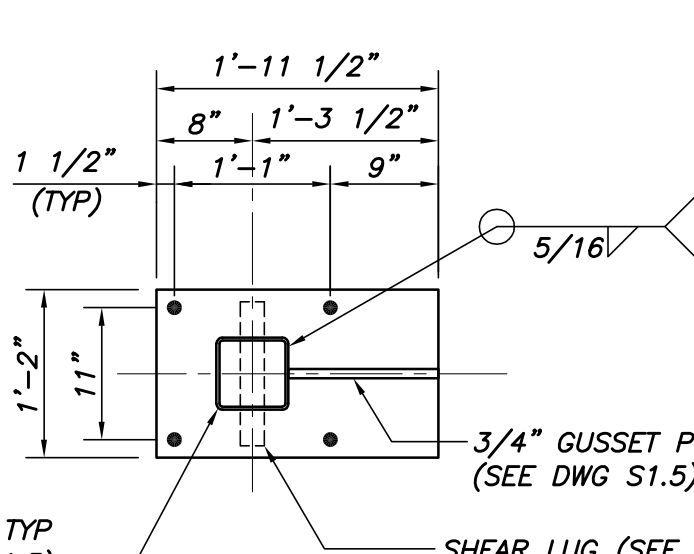
TYP GLU LAM BEAM/COL CONNS AT SKEWED OUTSIDE CORNER
3/4"=1'-0"



TOP CONN AT INSIDE CORNER



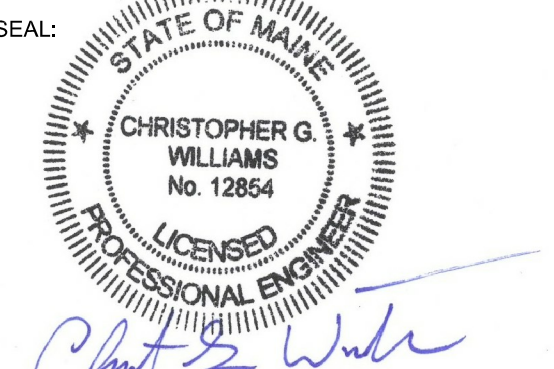
BOTTOM CONN AT INSIDE CORNER



BP-E

PL 1x15x1-11 1/2" W/(4)-1 5/16" HOLES FOR (4)-3/4" GR 36 GALV ANCHOR RODS W/19" EMBED & 6" PROJ

PROJECT NAME:
PATRONS OXFORD OFFICES
97 TECHNOLOGY PARK DRIVE
PORTLAND, MAINE 04102
UNITED STATES OF AMERICA



THIS DRAWING IS THE PROPERTY OF SCOTT SIMONS ARCHITECTS (SSA) AND IS NOT TO BE COPIED OR REPRODUCED IN PART OR WHOLE.
2016 © SCOTT SIMONS ARCHITECTS, LLC

REVISION:

1	DATE
2	DATE
3	DATE
4	DATE
5	DATE
6	DATE

DATE OF ISSUE: 14 JANUARY 2016
PROJECT NUMBER: 3985
STATUS: CONSTRUCTION DOCUMENTS

FRAMING SECTIONS & DETAILS

S3.1