

REGISTERS - GRILLES - DIFFUSERS (RGD) SCHEDULE										
TAG	PRICE MODEL	TYPE	DAMPER	NECK SIZE	FACE SIZE	CFM RANGE	MAX TOTAL P.D. (IN.W.C.)	MAX NC LEVEL	BLOW	NOTES
S-1	SCDA	SQ. CEILING SUPPLY DIFFUSER	YES	6" DIA	12" X 12"	0-150	0.07"	16	4-WAY	
S-2	SCDA	SQ. CEILING SUPPLY DIFFUSER	YES	8" DIA	24" X 24"	151-275	0.07"	19	4-WAY	
S-3	SCDA	SQ. CEILING SUPPLY DIFFUSER	YES	10" DIA	24" X 24"	276-450	0.07"	22	4-WAY	
S-4	520D	STEEL DOUBLE DEFL. SUPPLY	YES	6" X 6"	8" X 8"	0-130	0.10"	20	ADJUSTABLE	
S-5	520D	STEEL DOUBLE DEFL. SUPPLY	YES	8" X 6"	10" X 8"	131-180	0.10"	21	ADJUSTABLE	
S-6	520D	STEEL DOUBLE DEFL. SUPPLY	YES	12" X 6"	14" X 8"	181-300	0.10"	21	ADJUSTABLE	
S-7	520D	STEEL DOUBLE DEFL. SUPPLY	YES	18" X 6"	20" X 8"	301-425	0.10"	22	ADJUSTABLE	
S-8	SDS100	SLOT DIFFUSER - 3 X 1" SLOTS	YES	4-FT SLOT	48" X 5-3/8"	250 - 300	0.05"	22	ADJUSTABLE	WOOD CEILING
S-9	LBPH-16A	ALUM FLOOR GRILLE	NO	12" X 4"	13-5/8" X 5-5/8"	0-100	0.02"	15	SURFACE MT.	15 - DEGREE
R-1	630DAL	ALUM RETURN REGISTER, 3/4" SPACING, 35 DEG VANES	YES	8" X 8"	9" X 9"	0-110	0.05"	20	-----	6" DIA RUNOUT
R-2	630DAL	ALUM RETURN REGISTER, 3/4" SPACING, 35 DEG VANES	YES	12" X 12"	13" X 13"	171-220	0.05"	20	-----	8" DIA RUNOUT
R-3	630DAL	ALUM RETURN REGISTER, 3/4" SPACING, 35 DEG VANES	YES	12" X 12"	13" X 13"	221-360	0.02"	20	-----	10" DIA RUNOUT
R-4	630D	ALUM RETURN GRILLE, 3/4" SPACING, 35 DEG VANES	NO	22" X 10"	23" X 11"	361-600	0.02"	20	-----	12" DIA RUNOUT
R-5	630D	ALUM RETURN GRILLE, 3/4" SPACING, 35 DEG VANES	NO	23" X 23"	24" X 24"	601-1,150	0.02"	22	-----	14" DIA RUNOUT
R-6	630DAL	ALUM RETURN REGISTER, 3/4" SPACING, 35 DEG VANES	NO	18" X 6"	19" X 7"	250	0.02"	20	-----	
R-7	630DAL	ALUM RETURN REGISTER, 3/4" SPACING, 35 DEG VANES	NO	22" X 6"	23" X 7"	251-325	0.02"	20	-----	
R-8	SDR100	SLOT RETURN - 3 X 1" SLOTS	YES	5-FT SLOT	60" X 5-3/8"	250 - 300	0.05"	22	-----	WOOD CEILING

LOUVER SCHEDULE													
TAG	MAKE - MODEL	AIR SYSTEM	DUTY	CFM	DIMENSIONS				BEGINNING POINT OF WATER PENETRATION AT 0.01 OZ/SF	MAX P.D. MAX W.C.	NOTES		
					WIDTH (in.)	HEIGHT (in.)	MIN. FREE AREA (SF)	NET VELOCITY (FT/MIN)				% FREE AREA	BLADE DEPTH
L-1	RUSKIN ELF445DX	ERU-1 WEST	INTAKE		42	24				4"		1	
L-2	RUSKIN ELF445DX	ERU-1 WEST	EXHAUST		48	24				4"		1	
		ERU-1 WEST	INTAKE	695	42	18	2.23	311.7	42.5%	4"	1,075FPM	0.02	2
		ERU-1 WEST	EXHAUST	690	48	18	2.66	259.4	44.3%	4"	1,075FPM	0.02	2
L-3	RUSKIN ELF445DX	ERU-2 EAST	INTAKE	700	42	18	2.23	313.9	42.5%	4"	1,075FPM	0.02	
L-4	RUSKIN ELF445DX	ERU-2 EAST	EXHAUST	685	42	18	2.23	307.2	42.5%	4"	1,075FPM	0.02	

NOTES:  
1. OVERALL DIMENSIONS - TOP 6" (+/-) OF LOUVER SHALL BE AN INSULATED/BLANKED PANEL.  
2. LOUVER PERFORMANCE - ACTIVE AREA OF LOUVERS - 18" HIGH

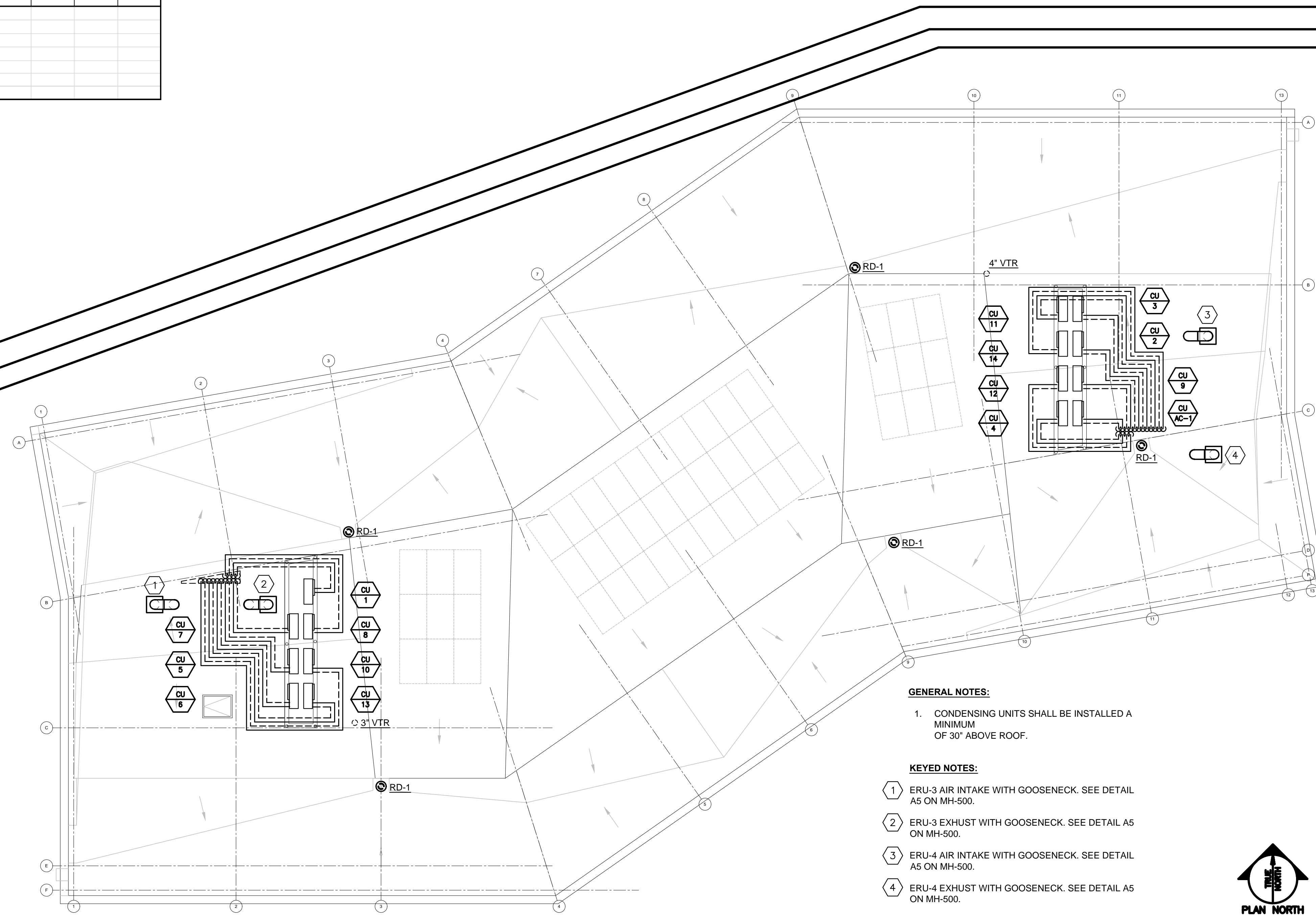
ELECTRIC DUCT HEATING COIL SCHEDULE													
TAG	MANUFACTURER - MODEL	SERVES	AIRFLOW W	LENGTH	HEIGHT	FACE VEL	EDB	LDB	MAX APD	BTUH	KW	AMPS	VOLT / PH
DC-1	GREENHECK IDHC	ERU-1	695	14	14	511	40	75	0.2"	26,271	7.7	20.8	208/3
DC-2	GREENHECK IDHC	ERU-2	700	14	14	514	40	75	0.2"	26,460	7.8	17.5	208/3
DC-3	GREENHECK IDHC	ERU-3	575	14	14	422	40	75	0.2"	21,735	6.4	15.0	208/3
DC-4	GREENHECK IDHC	ERU-4	685	14	14	503	40	75	0.2"	25,893	7.6	17.0	208/3

NOTES:  
1. Provide SCR Heating Control  
2. Provide disconnect switch.  
3. Accessories: Airflow switch, duct thermostat, magnetic contactor, and pilot light.  
4. Coordinate control box location - LH or RH for proper maintenance access.  
5. Provide duct mounted thermostat

ELECTRIC HEATER SCHEDULE									
TAG	SERVES	INDEECO MODEL	VOLTS	PHASE	WATTS	AMPS	CFM	BTUH	WEIGHT (LBS.)
EH-1	STAIR ST02	CCI-931U03000V	208	1	3,000	11.2	160	10,239	26
EH-2	ELEC 124	CCI-931U03000V	208	1	3,000	11.2	160	10,239	26
EH-3	MUDROOM 110	CCI-931U03000V	208	1	3,000	11.2	160	10,239	26
EH-4	SHWR 119	CCI-931U03000V	208	1	3,000	11.2	160	10,239	26
EH-5	SHWR 120	CCI-931U03000V	208	1	3,000	11.2	160	10,239	26
EH-6	SHWR 122	CCI-931U03000V	208	1	3,000	11.2	160	10,239	26
EH-7	STAIR ST03	CCI-931U03000V	208	1	3,000	11.2	160	10,239	26
EH-8	SPRK 123	CCI-931U03000V	208	1	3,000	11.2	160	10,239	26

NOTES: HEATERS SHALL BE WALL OR CEILING MOUNTED AS INDICATED. PROVIDE FACTORY DISCONNECT SWITCHES

C1 MECHANICAL SCHEDULES  
NO SCALE



GENERAL NOTES:  
1. CONDENSING UNITS SHALL BE INSTALLED A MINIMUM OF 30" ABOVE ROOF.

- KEYED NOTES:
- ① ERU-3 AIR INTAKE WITH GOOSENECK. SEE DETAIL A5 ON MH-500.
  - ② ERU-3 EXHUST WITH GOOSENECK. SEE DETAIL A5 ON MH-500.
  - ③ ERU-4 AIR INTAKE WITH GOOSENECK. SEE DETAIL A5 ON MH-500.
  - ④ ERU-4 EXHUST WITH GOOSENECK. SEE DETAIL A5 ON MH-500.



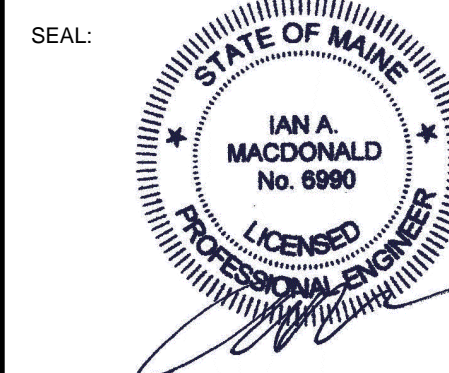
Scott Simons Architects  
75 York Street, Portland, Maine 04101  
www.simonsarchitects.com  
207.772.4656

**Allied Engineering**  
Structural Mechanical Electrical Commissioning  
160 Veranda Street  
Portland, Maine 04103  
T: 207.221.2260  
F: 207.221.2266  
Web: www.allied-eng.com

Allied Project No: 15-023  
Cad File: 14023\_M.dwg

PROJECT NAME:  
**PATRONS OXFORD OFFICES**

PORTLAND TECHNOLOGY PARK  
RAND ROAD, PORTLAND, ME



THIS DRAWING IS THE PROPERTY OF SCOTT SIMONS ARCHITECTS (SSA) AND IS NOT TO BE COPIED OR REPRODUCED IN PART OR WHOLE.  
©2015 © SCOTT SIMONS ARCHITECTS, LLC

REVISION:	DATE
1	DATE
2	DATE
3	DATE
4	DATE
5	DATE
6	DATE

DATE OF ISSUE: 14 January, 2016  
PROJECT NUMBER: 2105-0100 Patrons Oxford  
STATUS: Construction Documents

**ROOF MECHANICAL HVAC AND PIPING PLAN**

**MH-101**