

ROOM 101

ROOM 102

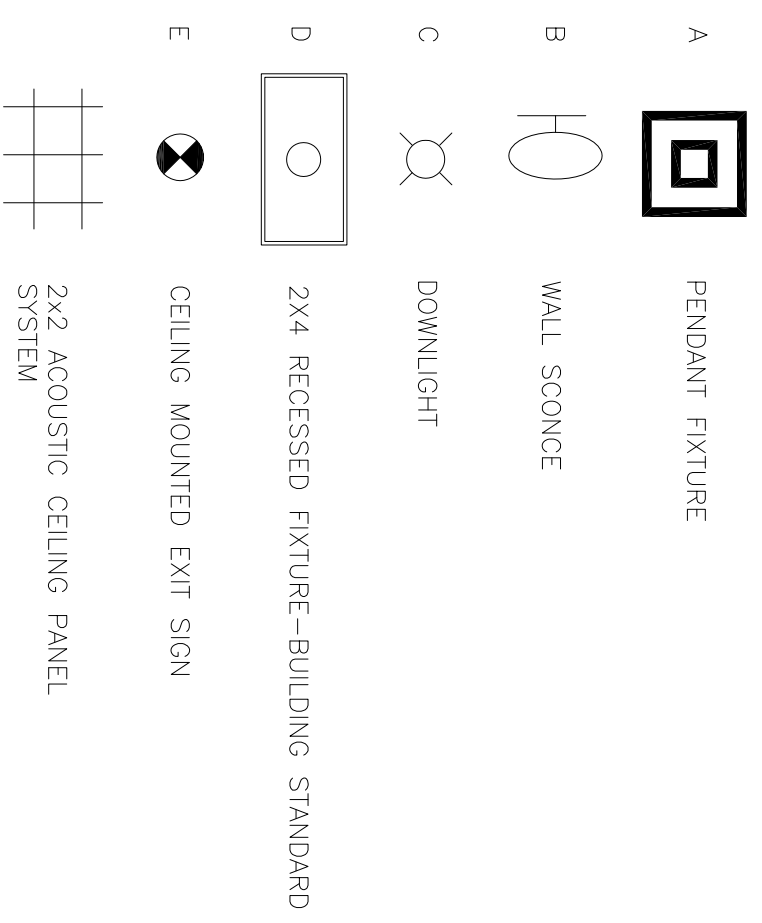
ROOM 103

ROOM 104

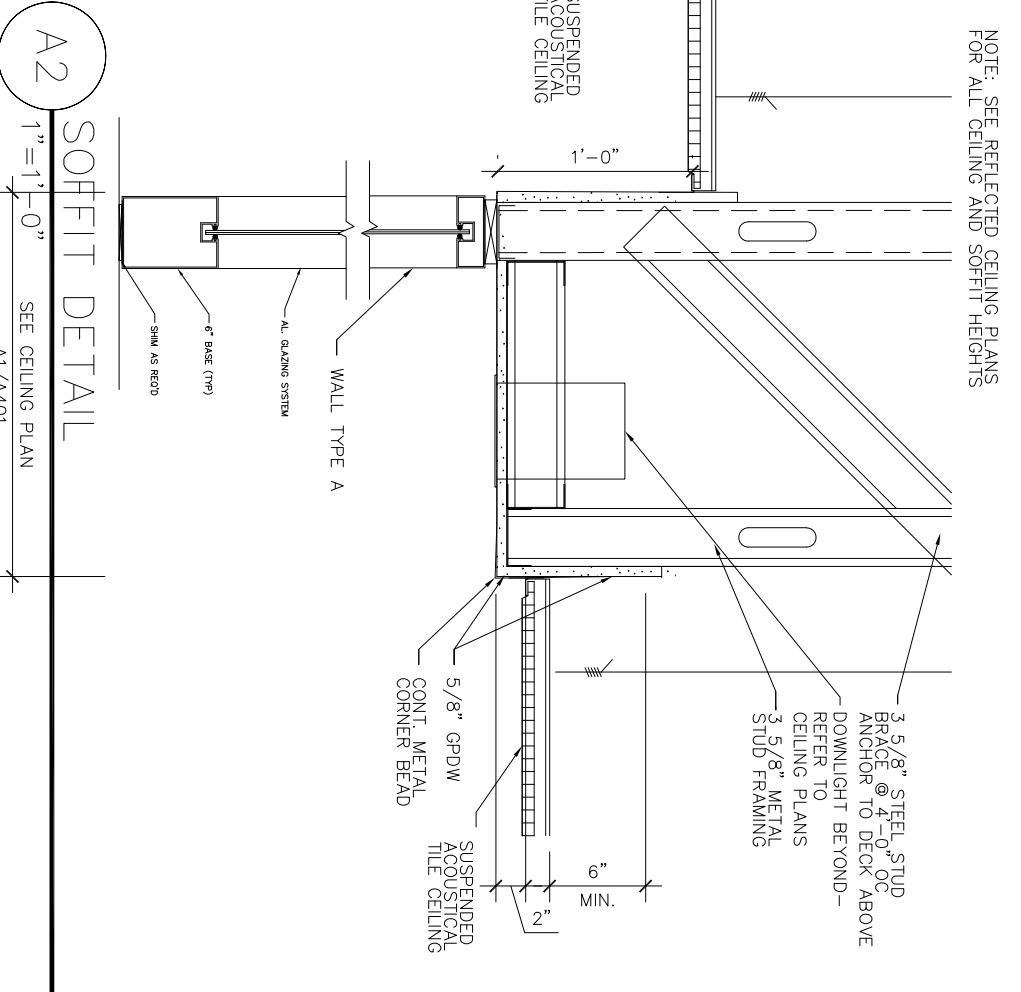
CEILING HEIGHT TO REMAIN @ 9'-1"

UNDER SOFFIT HEIGHT 8'-1"

EXISTING EXIT SIGN TO REMAIN



REFLECTED CEILING LEGEND



A2 SOFFIT DETAIL
1"=1'-0"
SEE CEILING PLAN A1/A401

B2 1/4" = 1'-0" REFLECTED CEILING PLAN - 1ST

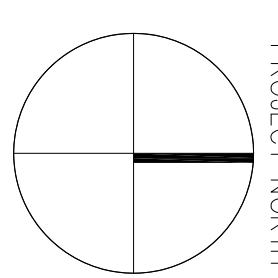
B1 N.T.S. REFLECTED CEILING PLAN - LEGEND

LIGHT FIXTURE SCHEDULE

NO.	MATERIAL	MANUFACTURER	STYLE	REMARKS/LOCATION
A	PENDANT FIXTURE	HUBBARDTON FORGE	18.6"X18.6" VORTIS MEDIUM SEMI-FLUSH	IVORY ART GLASS - 07-DARK SMOKE FINISH
B	WALL SCONCE	HUBBARDTON FORGE	4.5"X18.3" AIRIS SMALL SCONCE	IVORY ART GLASS - 07-DARK SMOKE FINISH
C	DOWN LIGHTS	COOPER	PORTFOLIO COMPACT FLUORESCENT C6132/E/6111/HWF/TRMBP	
D	RECESSED FIXTURE	TBD	BUILDING OWNER TO SUPPLY SPEC MATCH BUILDING STANDARD	
E	EXIT LIGHT	TBD		

A1 N.T.S. LIGHT FIXTURE SCHEDULE

NO	DATE	REVISIONS



MARINE TRADE CENTER
2 PORTLAND FISH PIER
PORTLAND, ME

TITLE
1ST FLOOR - NEW
RCP

SCALE
1/4"=1'-0"

DATE
12/22/14

DRAWN BY
JAT

CHECKED BY
-



A401

14.201