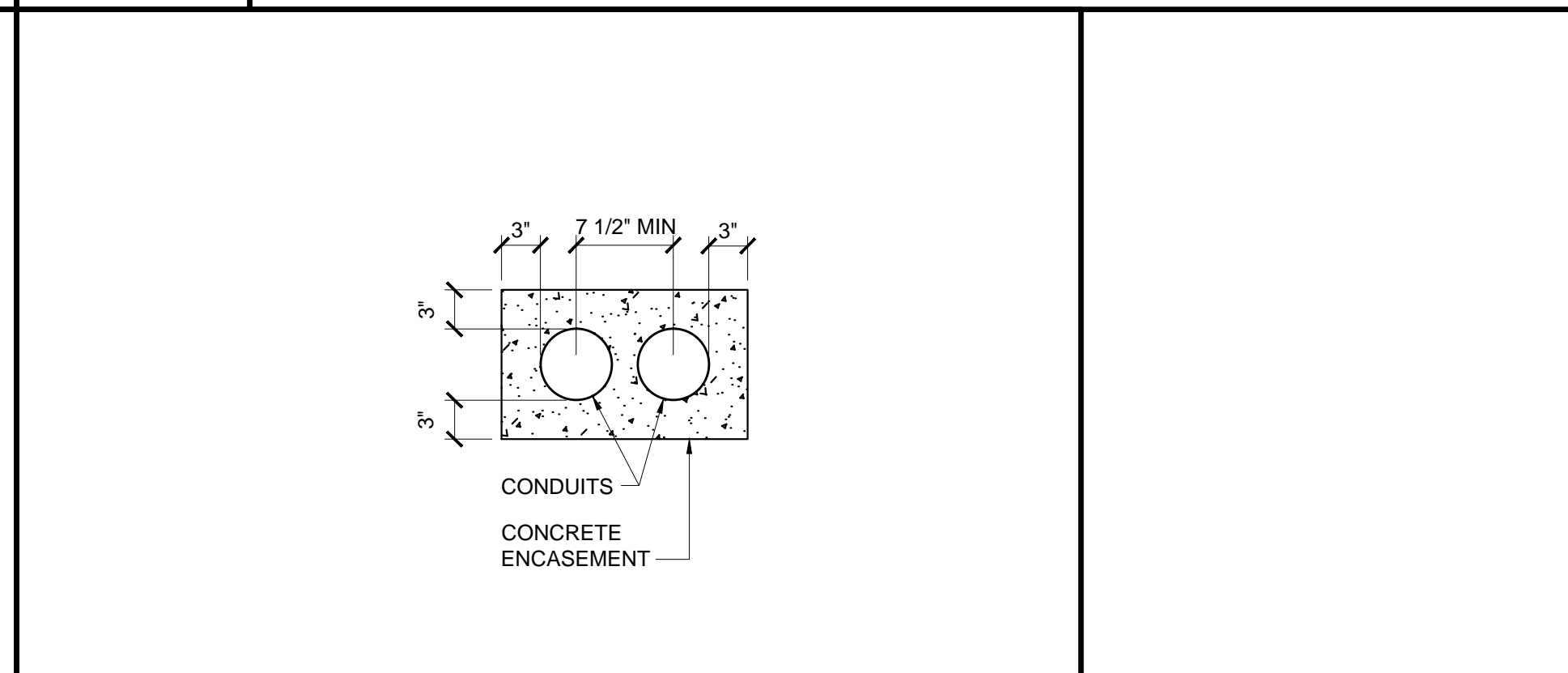
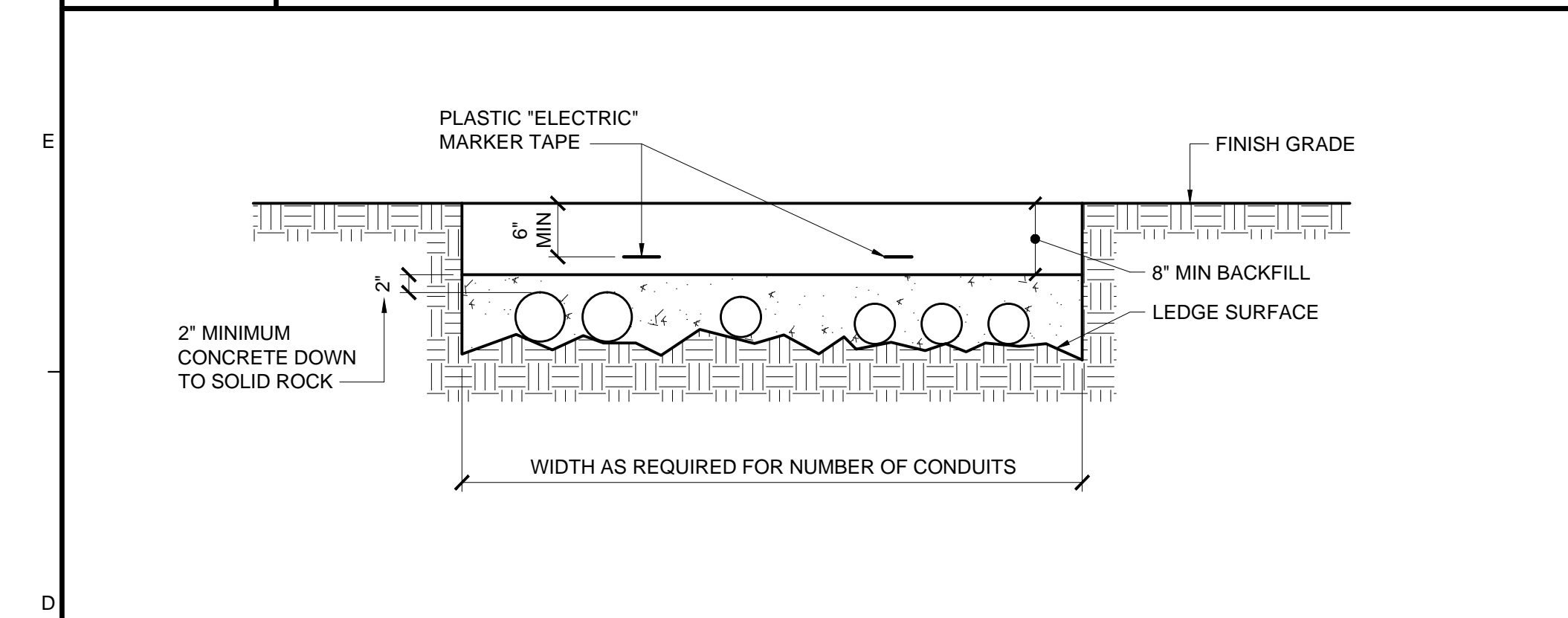


F1 TYPICAL SEPARATION OF NORMAL POWER SYSTEMS
NOT TO SCALE

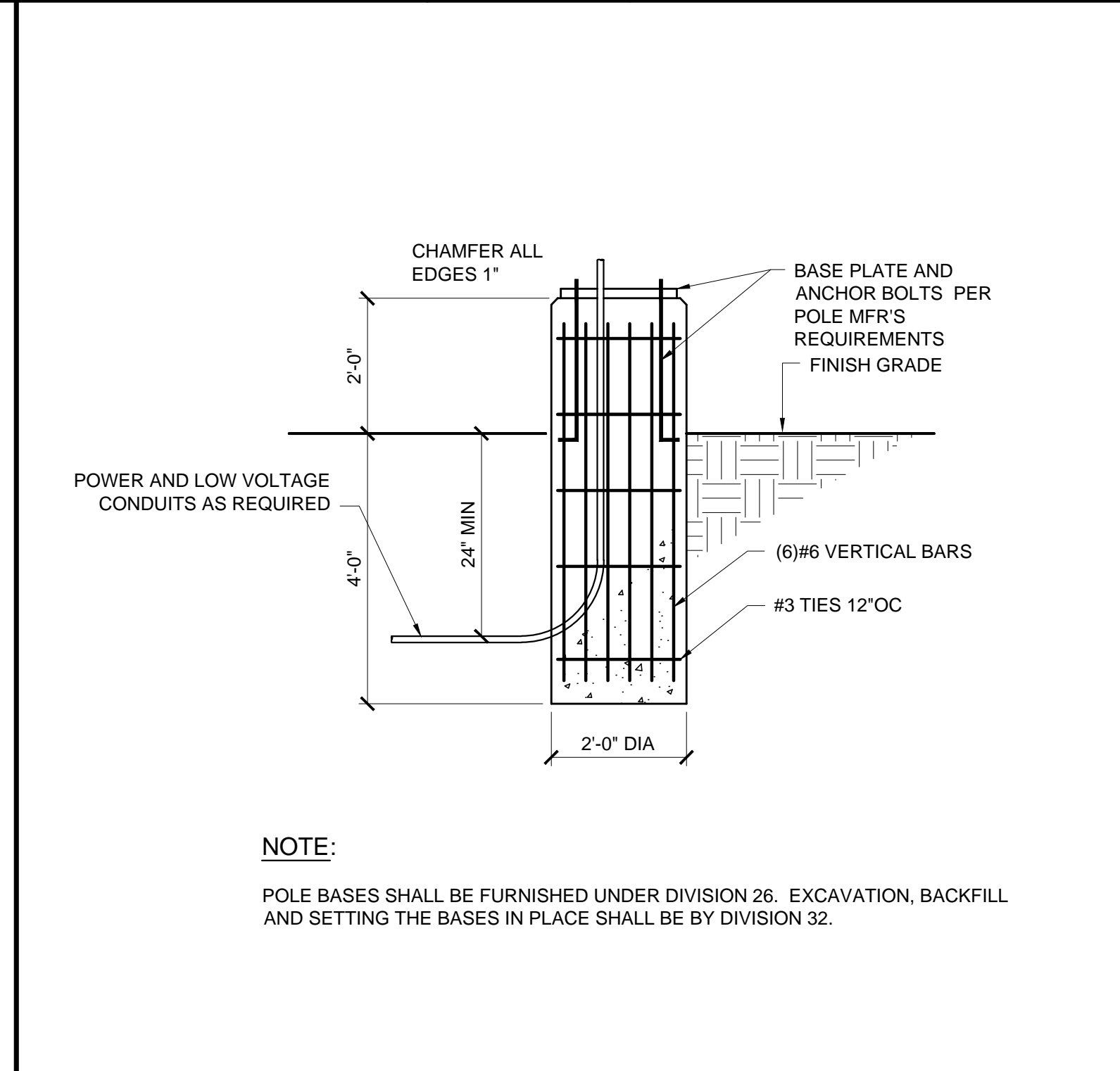
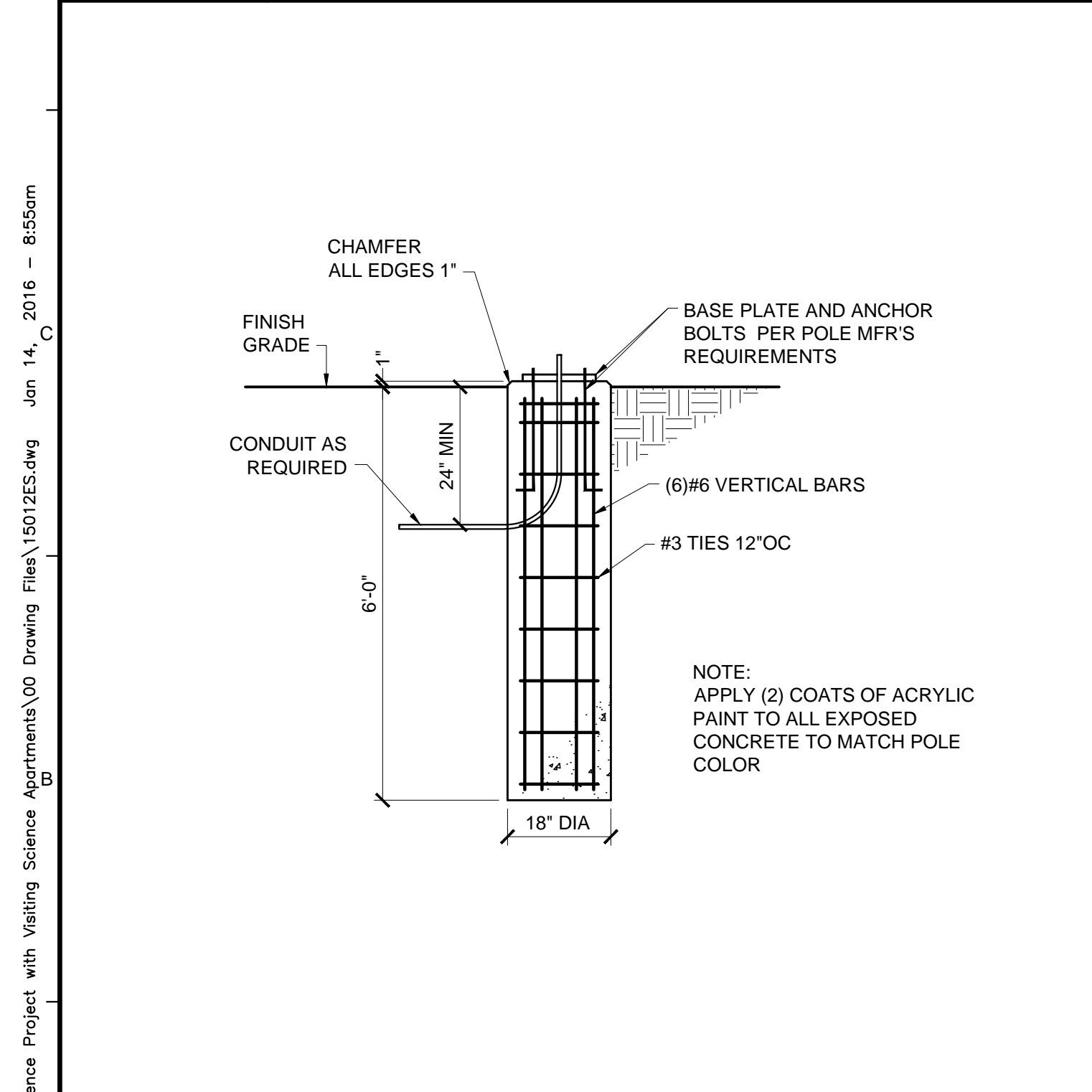
F4 TYPICAL SEPARATION OF UTILITY SYSTEMS
NOT TO SCALE

F8 TYPICAL SEPARATION OF UTILITY SYSTEMS UNDER PAVEMENT
NOT TO SCALE



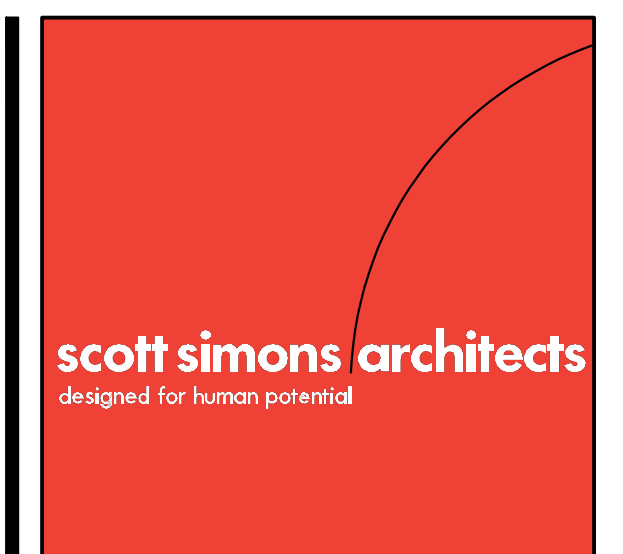
D1 MINIMUM CONDUIT COVER FOR CONDUITS ON LEDGE
NOT TO SCALE

D4 TYPICAL CONCRETE ENCASEMENT DIMENSIONS
NOT TO SCALE

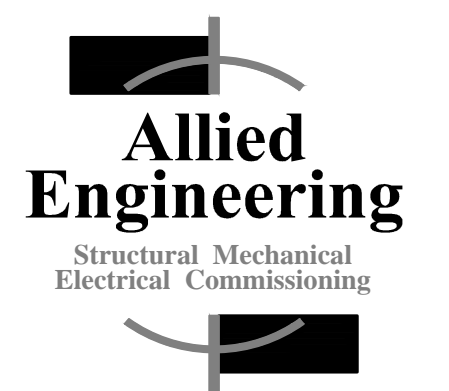


A1 PEDESTRIAN POLE BASE DETAIL
NOT TO SCALE

A3 POLE BASE DETAIL
NOT TO SCALE



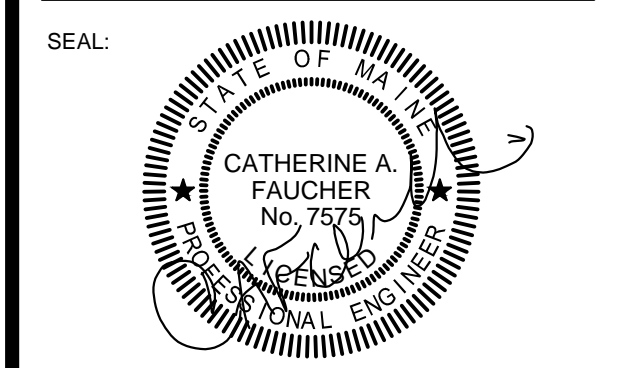
75 York Street
Portland, Maine 04101
simonsarchitects.com
207.772.4656



160 Veranda Street
Portland, Maine 04103
T: 207.221.2369
F: 207.221.2366
Web: www.allied-eng.com

Allied Project No: 15012
Cad File: 15012ES.dwg

PROJECT NAME:
BIGELOW RESIDENCE PROJECT
60 BIGELOW DRIVE
BOOTHBAY, ME 04544



THIS DRAWING IS THE PROPERTY OF SCOTT SIMONS ARCHITECTS (SSA) AND IS NOT TO BE COPIED OR REPRODUCED IN PART OR WHOLE 2012 © SCOTT SIMONS ARCHITECTS, LLC

REVISION:

1	DATE
2	DATE
3	DATE
4	DATE
5	DATE
6	DATE

DATE OF ISSUE: JANUARY 14, 2016
PROJECT NUMBER: 2014-0230 BIGELOW RES.
STATUS: 100% CONSTRUCTION DOCUMENTS ISSUED FOR BIDDING

ELECTRICAL SITE DETAILS

ES101

N:\Projects\2015\15012 - Bigelow Residence Project with Visiting Science Apartments\00 Drawing Files\15012ES.dwg Jan 14, 2016 - 8:55am