

THIS DRAWING IS THE PROPERTY OF SCOTT SIMONS ARCHITECTS (SSA) AND IS NOT TO BE COPIED OR REPRODUCED IN PART OR WHOLE. 2015 © SCOTT SIMONS ARCHITECTS, LLC

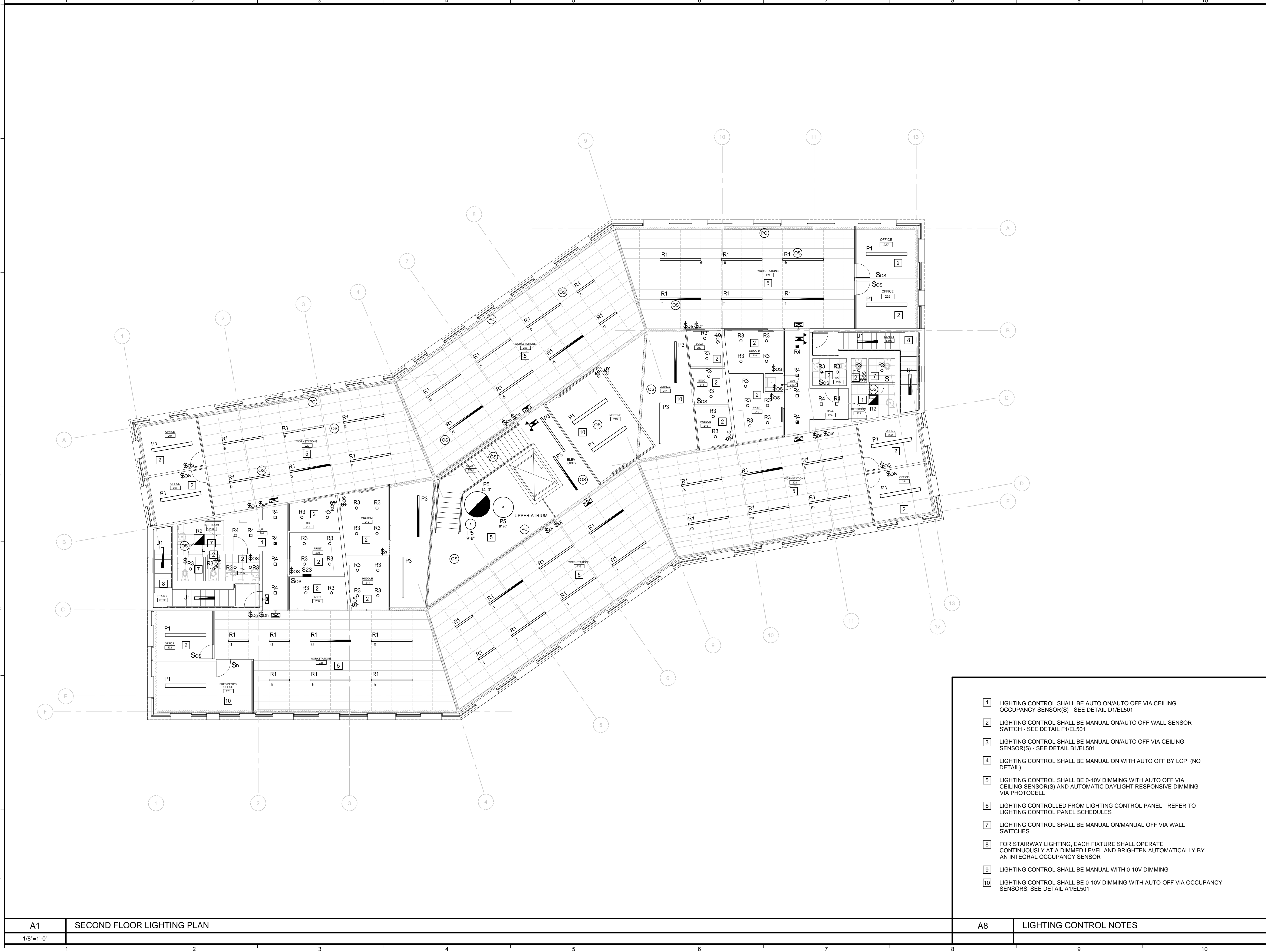
REVISION:

NO.	DATE
1	DATE
2	DATE
3	DATE
4	DATE
5	DATE
6	DATE

DATE OF ISSUE: 14 January, 2016
PROJECT NUMBER: 2105-0100 Patrons Oxford
STATUS: Construction Documents

SECOND FLOOR LIGHTING PLAN

EL102



- 1 LIGHTING CONTROL SHALL BE AUTO ON/AUTO OFF VIA CEILING OCCUPANCY SENSOR(S) - SEE DETAIL D1/EL501
- 2 LIGHTING CONTROL SHALL BE MANUAL ON/AUTO OFF WALL SENSOR SWITCH - SEE DETAIL F1/EL501
- 3 LIGHTING CONTROL SHALL BE MANUAL ON/AUTO OFF VIA CEILING SENSOR(S) - SEE DETAIL B1/EL501
- 4 LIGHTING CONTROL SHALL BE MANUAL ON WITH AUTO OFF BY LCP (NO DETAIL)
- 5 LIGHTING CONTROL SHALL BE 0-10V DIMMING WITH AUTO OFF VIA CEILING SENSOR(S) AND AUTOMATIC DAYLIGHT RESPONSIVE DIMMING VIA PHOTOCELL
- 6 LIGHTING CONTROLLED FROM LIGHTING CONTROL PANEL - REFER TO LIGHTING CONTROL PANEL SCHEDULES
- 7 LIGHTING CONTROL SHALL BE MANUAL ON/MANUAL OFF VIA WALL SWITCHES
- 8 FOR STAIRWAY LIGHTING, EACH FIXTURE SHALL OPERATE CONTINUOUSLY AT A DIMMED LEVEL AND BRIGHTEN AUTOMATICALLY BY AN INTEGRAL OCCUPANCY SENSOR
- 9 LIGHTING CONTROL SHALL BE MANUAL WITH 0-10V DIMMING
- 10 LIGHTING CONTROL SHALL BE 0-10V DIMMING WITH AUTO-OFF VIA OCCUPANCY SENSORS, SEE DETAIL A1/EL501

N:\Projects\2015\15023 - Patrons Oxford Insurance Building\00 Drawing Files\15023_E.dwg Jun 12, 2016 - 3:32pm