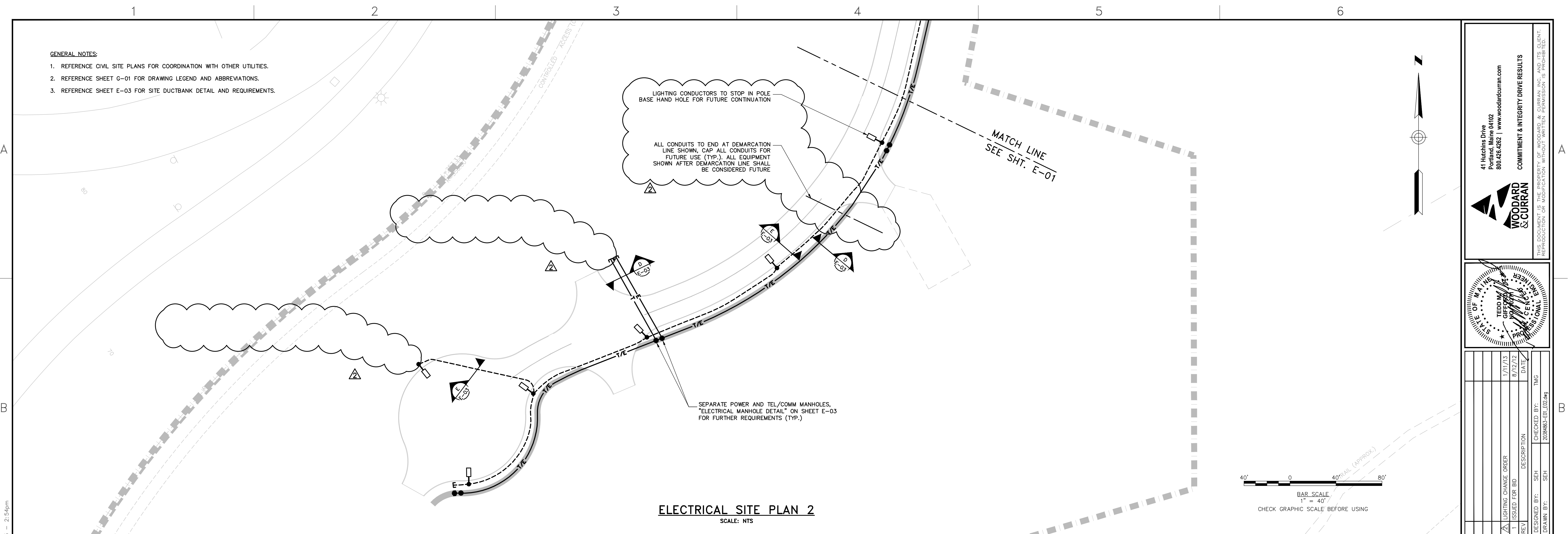
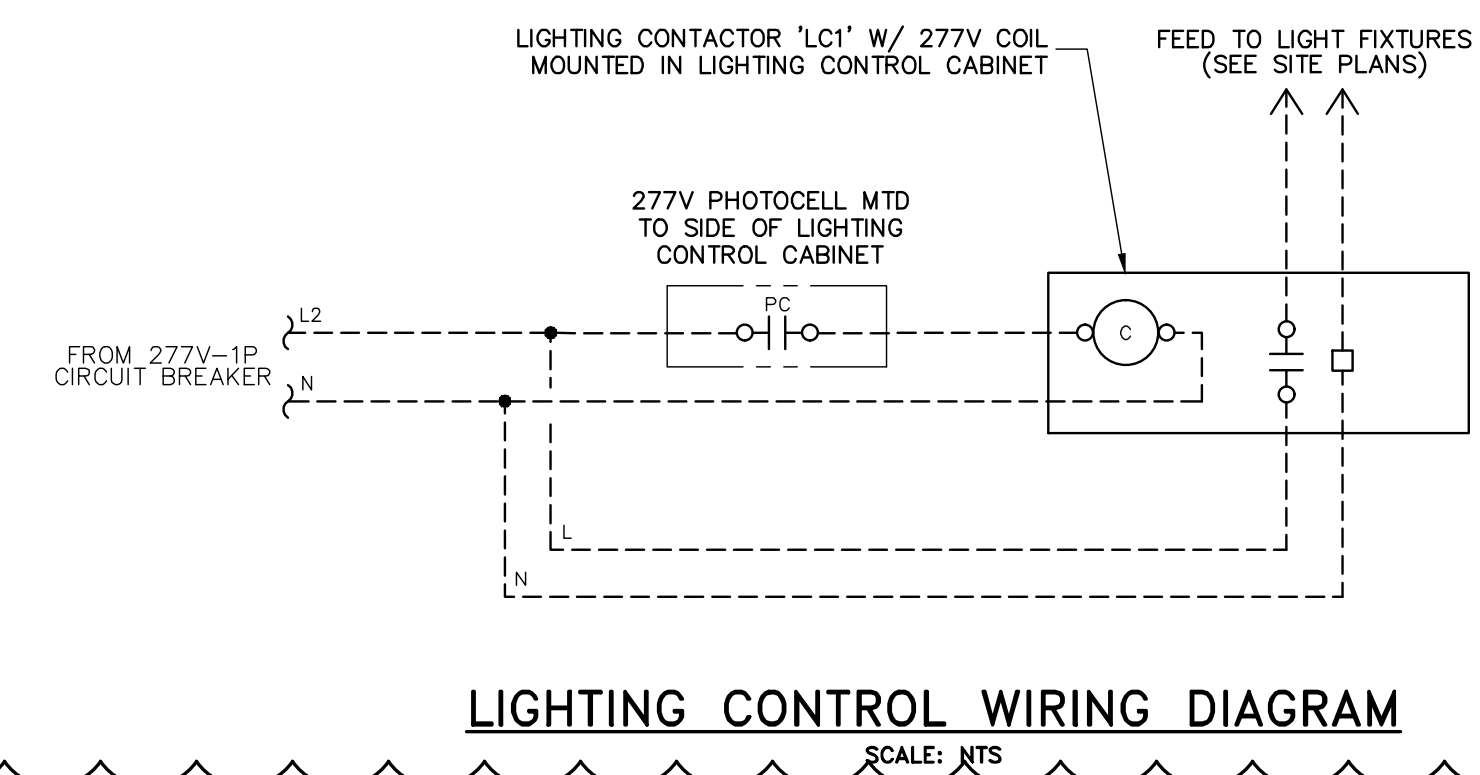
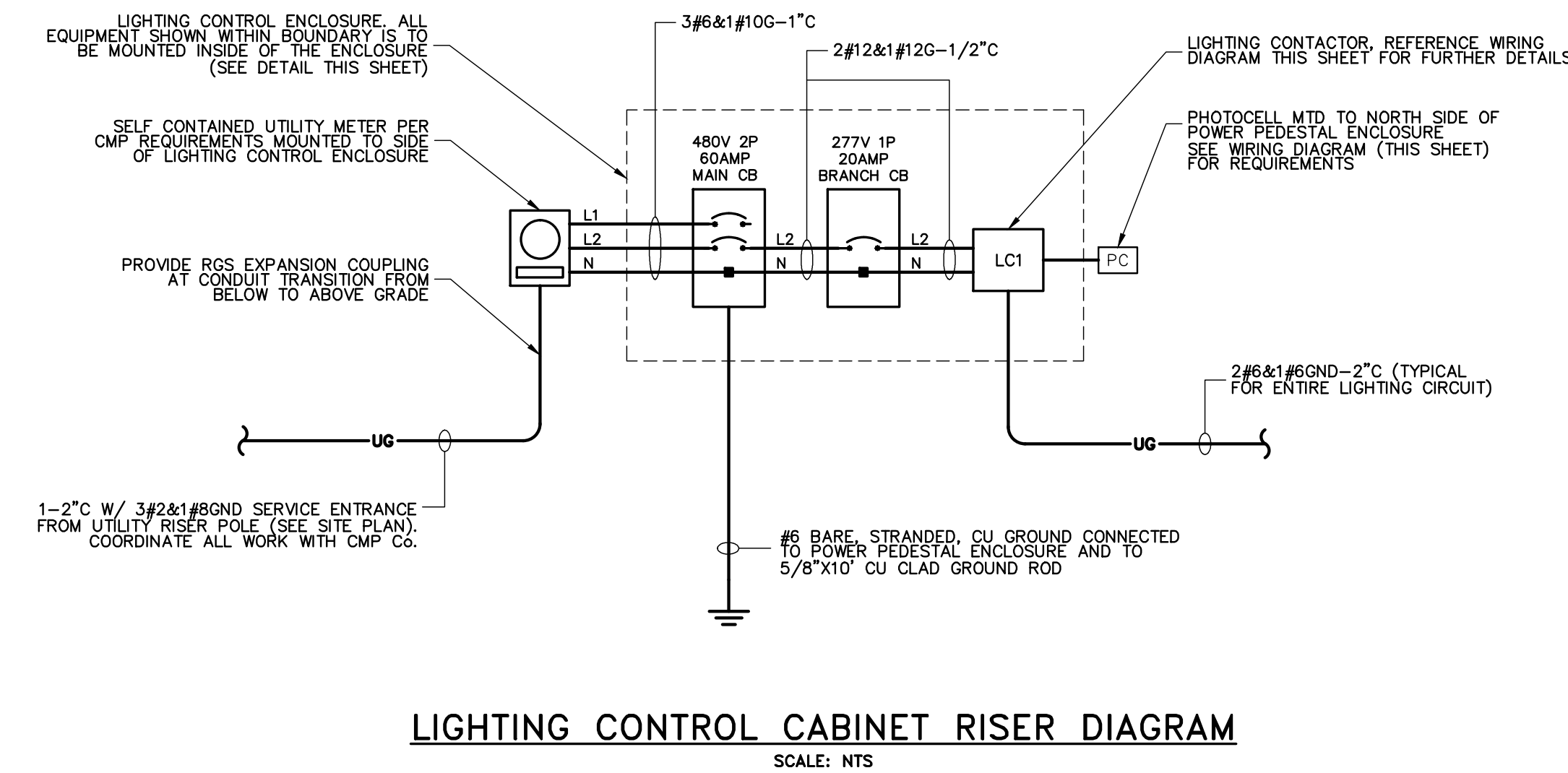
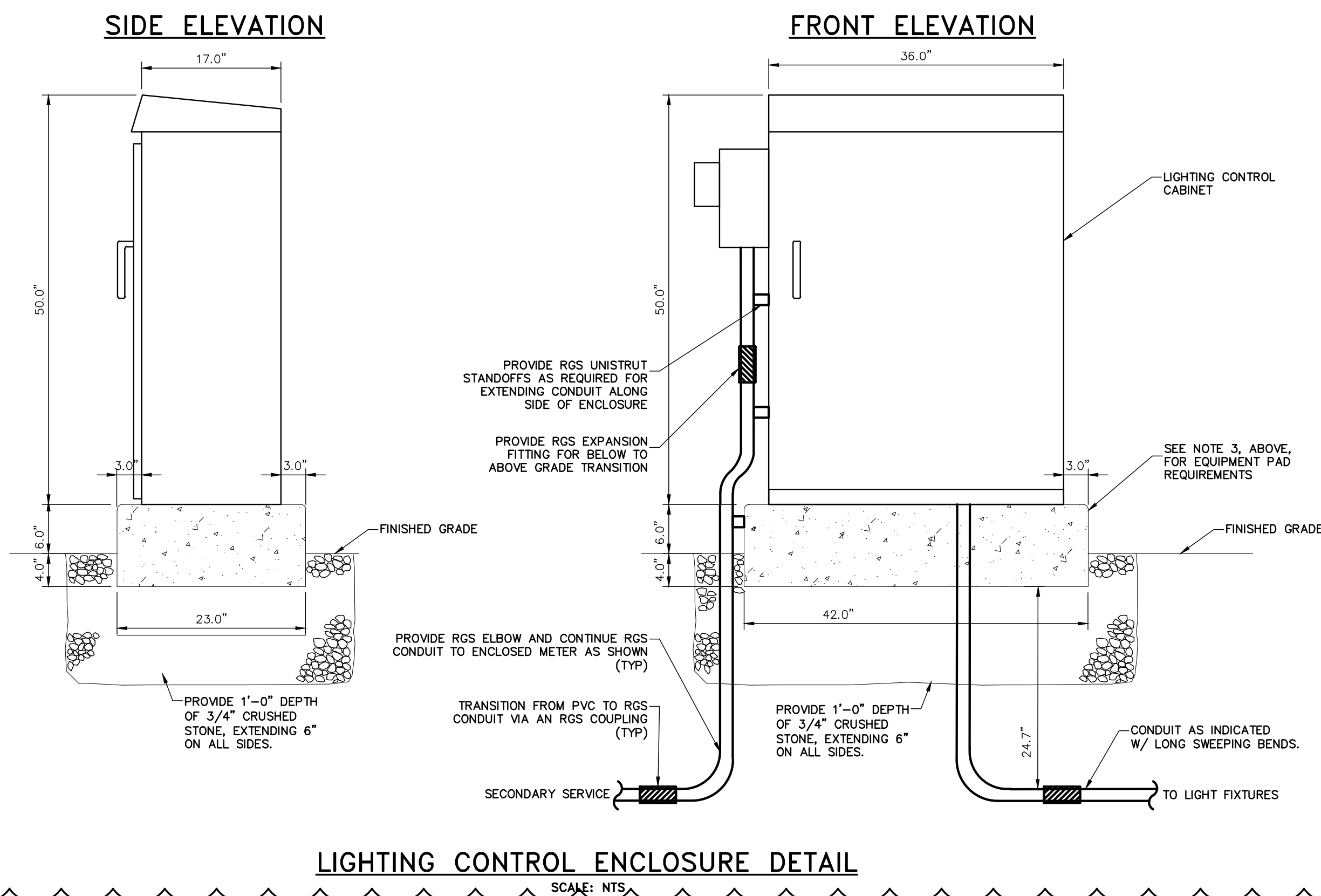


- GENERAL NOTES:**
1. REFERENCE CIVIL SITE PLANS FOR COORDINATION WITH OTHER UTILITIES.
  2. REFERENCE SHEET G-01 FOR DRAWING LEGEND AND ABBREVIATIONS.
  3. REFERENCE SHEET E-03 FOR SITE DUCTBANK DETAIL AND REQUIREMENTS.



- NOTES:**
1. PROVIDE LOCKABLE NEMA 3R ALUMINUM ENCLOSURE WITH INTEGRAL BACKPANEL EQUAL TO APX MODEL #APXS03617, OR APPROVED EQUAL.
  2. ALL WIRING & CABLES TO BE INSTALLED WITHIN THE EQUIPMENT ENCLOSURE SHALL BE TAGGED APPROPRIATELY TO DESIGNATE INTENDED USE AND CONNECTED LOAD. ALL CABLES SHALL BE BUNDED NEATLY, TIE WRAPPED, DRESSED APPROPRIATELY AND SHALL RUN PARALLEL AND PERPENDICULAR AT 90 DEGREE ANGLES. CABLES SHALL BE SUPPORTED VIA WIRE BUNDLE STRAPS AND HEAVY DUTY CABLE TIE MOUNTS, WHICH UTILIZE A SCREW MOUNTING METHOD TO SUPPORT TO THE BACK PANEL (ADHESIVE BACK SUPPORTS ARE NOT ACCEPTABLE). WIRE BUNDLE STRAPS SHALL BE SIMILAR TO PANDUIT WBS6 SERIES, AND CABLE TIE MOUNTS SHALL BE SIMILAR TO PANDUIT TMEH SERIES (OR APPROVED EQUAL).
  3. PROVIDE CONCRETE EQUIPMENT PAD W/ 1" CHAMFER ON ALL SIDES. SECURE ENCLOSURE TO PAD WITH STAINLESS STEEL ANCHOR BOLTS AS REQUIRED. FINAL DIMENSIONS OF EQUIPMENT PAD SHALL BE FIELD VERIFIED WITH ENCLOSURE SELECTED.



41 Huchling Drive  
Portland, Maine 04102  
800.426.4262 | www.woodardcurran.com

**WOODARD & CURRAN**

COMMITMENT & INTEGRITY DRIVE RESULTS

THIS DOCUMENT IS THE PROPERTY OF WOODARD & CURRAN INC. AND ITS CLIENT. REPRODUCTION OR DISTRIBUTION WITHOUT WRITTEN PERMISSION IS PROHIBITED.

TEDE W. GIFFORD  
PROJECT MANAGER

8/17/13  
ISSUED FOR BID

8/17/12  
DATE

1  
REV

DESCRIPTION

DATE

1/1/13  
LIGHTING CHANGE ORDER

1/1/13  
ISSUED FOR BID

1/1/13  
DATE

1/1/13  
DESCRIPTION

1/1/13  
ISSUED FOR BID

1/1/13  
DATE

1/1/13  
DESCRIPTION

DESIGNED BY:	SEH	CHECKED BY:	TMG
DRAWN BY:	SEH	DATE:	2013-08-12

**ELECTRICAL SITE PLAN 2**

CITY OF PORTLAND  
ECONOMIC DEVELOPMENT OFFICE  
PORTLAND, MAINE

PORTLAND TECHNOLOGY PARK

JOB NO.: 203848.63  
DATE: AUGUST 12, 2012  
SCALE: AS NOTED  
SHEET: 21 OF 22

**E-02**

**REVIEW SET**  
**NOT FOR CONSTRUCTION**

BANGOR Projects \900000 Bangor General Office \203848.63\Road \2013.01.11 Construction Drawings Electrical \00\CAD Drawings\Elect\20384863-E01\_E02.dwg, Jan 11, 2013 - 2:54pm