

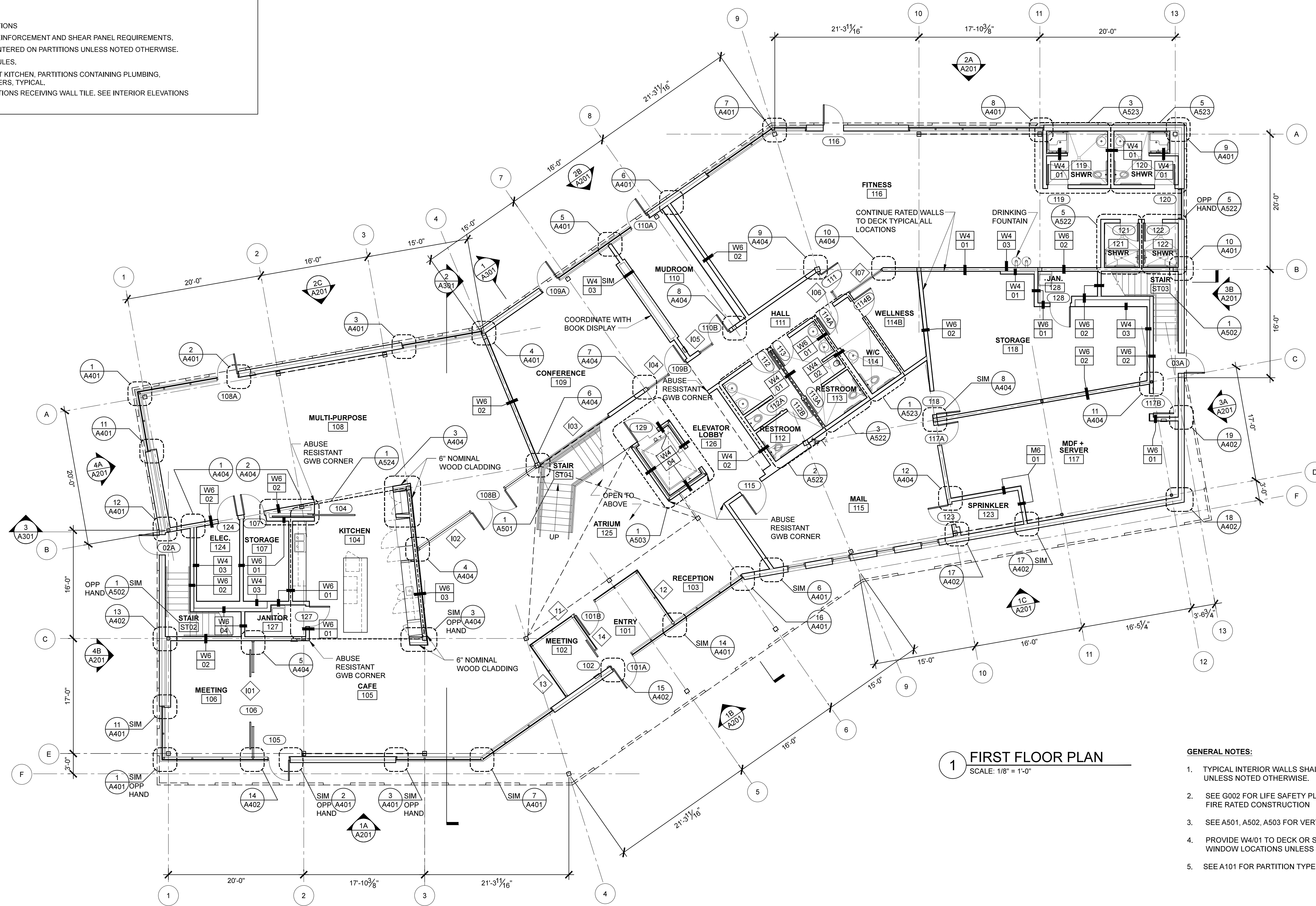
PARTITION TYPES

SCALE 1 1/2" = 1'-0"

<p>W6 01</p> <p>UL# U305</p> <p>RATING 60 MINS WHERE INDICATED</p> <p>5/8" GWB 2X6 WOOD STUD ACOUSTICAL BATT</p> <p>PROVIDE WD FURRING WHEN ADJACENT TO W6/02</p> <p>PROVIDE TYPE 'X' GWB, FIRE SEALANT AT ALL PENETRATIONS, AND SEAL TO FLOOR, DECK, AND/OR FIRE RATED HORIZONTAL ASSEMBLIES AT ALL INDICATED FIRE RATED LOCATIONS</p>	<p>W6 03</p> <p>UL# U305</p> <p>RATING 60 MINS WHERE INDICATED</p> <p>5/8" GWB 2X6 WOOD STUD ACOUSTICAL BATT SHEATHING SEE STRUCTURAL 6" NOMINAL WOOD CLADDING</p> <p>PROVIDE TYPE 'X' GWB, FIRE SEALANT AT ALL PENETRATIONS, AND SEAL TO FLOOR, DECK, AND/OR FIRE RATED HORIZONTAL ASSEMBLIES AT ALL INDICATED FIRE RATED LOCATIONS</p>	<p>W4 02</p> <p>UL# U000</p> <p>RATING 00 MINS WHERE INDICATED</p> <p>5/8" GWB 2X4 WOOD STUD ACOUSTICAL BATT</p> <p>PROVIDE TYPE 'X' GWB, FIRE SEALANT AT ALL PENETRATIONS, AND SEAL TO FLOOR, DECK, AND/OR FIRE RATED HORIZONTAL ASSEMBLIES AT ALL INDICATED FIRE RATED LOCATIONS</p>	<p>W4 04</p> <p>UL# U415</p> <p>RATING 60 MINS WHERE INDICATED</p> <p>5/8" GWB 2X4 WOOD STUD ACOUSTICAL BATT 1" GYPSUM PANEL "CH" METAL STUD</p> <p>PROVIDE TYPE 'X' GWB, FIRE SEALANT AT ALL PENETRATIONS, AND SEAL TO FLOOR, DECK, AND/OR FIRE RATED HORIZONTAL ASSEMBLIES AT ALL INDICATED FIRE RATED LOCATIONS</p>
<p>W6 02</p> <p>UL# U305</p> <p>RATING 60 MINS WHERE INDICATED</p> <p>5/8" GWB 2X6 WOOD STUD ACOUSTICAL BATT SHEATHING SEE STRUCTURAL</p> <p>PROVIDE TYPE 'X' GWB, FIRE SEALANT AT ALL PENETRATIONS, AND SEAL TO FLOOR, DECK, AND/OR FIRE RATED HORIZONTAL ASSEMBLIES AT ALL INDICATED FIRE RATED LOCATIONS</p>	<p>W4 01</p> <p>UL# U305</p> <p>RATING 60 MINS WHERE INDICATED</p> <p>5/8" GWB 2X4 WOOD STUD ACOUSTICAL BATT</p> <p>PROVIDE TYPE 'X' GWB, FIRE SEALANT AT ALL PENETRATIONS, AND SEAL TO FLOOR, DECK, AND/OR FIRE RATED HORIZONTAL ASSEMBLIES AT ALL INDICATED FIRE RATED LOCATIONS</p>	<p>W4 03</p> <p>UL# U000</p> <p>RATING 00 MINS WHERE INDICATED</p> <p>5/8" GWB 2X4 WOOD STUD</p> <p>PROVIDE TYPE 'X' GWB, FIRE SEALANT AT ALL PENETRATIONS, AND SEAL TO FLOOR, DECK, AND/OR FIRE RATED HORIZONTAL ASSEMBLIES AT ALL INDICATED FIRE RATED LOCATIONS</p>	<p>M6 01</p> <p>UL# U000</p> <p>RATING 00 MINS WHERE INDICATED</p> <p>5/8" GWB 1/2" WOOD STRAPPING 6" NOM CLASS D-2 CMU 10 MIL POLY VAPOR BARRIER EPOXY PAINT</p> <p>PROVIDE TYPE 'X' GWB, FIRE SEALANT AT ALL PENETRATIONS, AND SEAL TO FLOOR, DECK, AND/OR FIRE RATED HORIZONTAL ASSEMBLIES AT ALL INDICATED FIRE RATED LOCATIONS</p>

PARTITION TYPE GENERAL NOTES:

- SEE G002 FOR FIRE RATED WALL LOCATIONS
- SEE STRUCTURAL DOCUMENTS FOR REINFORCEMENT AND SHEAR PANEL REQUIREMENTS.
- INTERIOR DOOR FRAMES SHALL BE CENTERED ON PARTITIONS UNLESS NOTED OTHERWISE.
- SEE A121 AND A122 FOR FINISH SCHEDULES.
- PROVIDE MOISTURE RESISTANT GWB AT KITCHEN, PARTITIONS CONTAINING PLUMBING, WET ROOMS, RESTROOMS, AND SHOWERS, TYPICAL.
- PROVIDE TILE BACKER BOARD IN LOCATIONS RECEIVING WALL TILE. SEE INTERIOR ELEVATIONS AND FINISH SCHEDULE



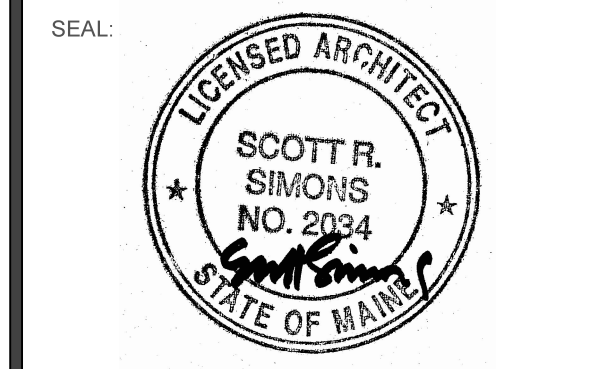
1 FIRST FLOOR PLAN
SCALE: 1/8" = 1'-0"

- GENERAL NOTES:**
1. TYPICAL INTERIOR WALLS SHALL BE TYPE W6/01, UNLESS NOTED OTHERWISE.
 2. SEE G002 FOR LIFE SAFETY PLAN AND LOCATION OF FIRE RATED CONSTRUCTION
 3. SEE A501, A502, A503 FOR VERTICAL CIRCULATION
 4. PROVIDE W4/01 TO DECK OR STRUCTURE ABOVE AT INTERIOR WINDOW LOCATIONS UNLESS NOTED OTHERWISE
 5. SEE A101 FOR PARTITION TYPES



75 York Street
Portland, Maine 04101
simonsarchitects.com
207.772.4656

PROJECT NAME:
PATRONS OXFORD OFFICES
97 TECHNOLOGY PARK DRIVE
PORTLAND, MAINE 04102
UNITED STATES OF AMERICA



THIS DRAWING IS THE PROPERTY OF SCOTT SIMONS ARCHITECTS (SSA) AND IS NOT TO BE COPIED OR REPRODUCED IN PART OR WHOLE
2016 © SCOTT SIMONS ARCHITECTS, LLC

REVISION:

1	DATE
2	DATE
3	DATE
4	DATE
5	DATE
6	DATE

DATE OF ISSUE: 14 JANUARY 2016
PROJECT NUMBER: 2105-0100 PATRONS OXFORD
STATUS: CONSTRUCTION DOCUMENTS

FIRST FLOOR PLAN

A101