



Reviewed for Code Compliance
Inspections Division
Approved with Conditions

Date: 10/25/13

Neokraft

S I G N S

Neokraft Signs Inc.
686 Main Street
Lewiston, Maine 04240
Telephone: 207.782.9654
Facsimile: 207.782.0009
1.800.339.2258
<http://www.neokraft.com>

Custom Sign Fabrication

These plans are the exclusive property of Neokraft Signs, Inc. and are the result of the original work of its employees. They are submitted to Neokraft's client for the sole purpose of consideration of whether to purchase these plans or to purchase from Neokraft a sign manufactured according to these plans.

Distribution or exhibition of these plans to anyone other than employees of said client, or use of these plans to construct a sign similar to the one embodied herein, is expressly forbidden. In the event that such exhibition or construction occurs, Neokraft expects to be reimbursed \$1500 in compensation for time and effort entailed in creating these plans.

Portland Technology Park 17491

PERMIT

Location: Off of Rand Road

Portland, Maine

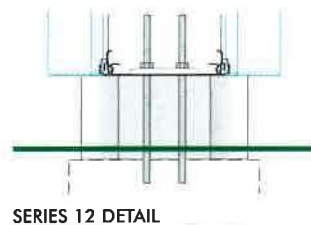
Drawing No.: 1 of 2

Drawn by: BK Rep.: PL

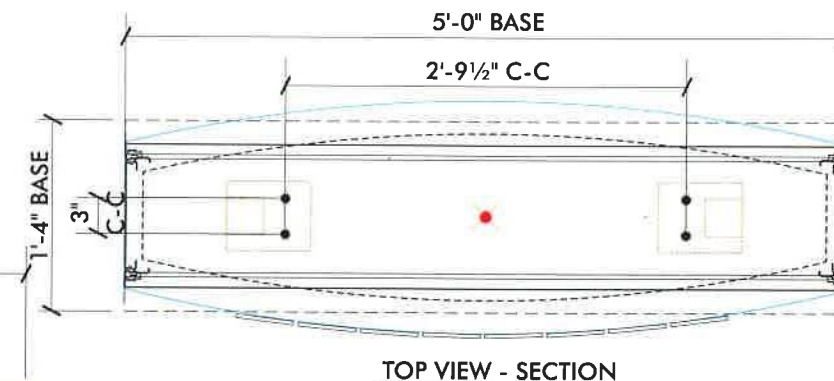
Date: 10.24.2013

Lead No.: CL020295

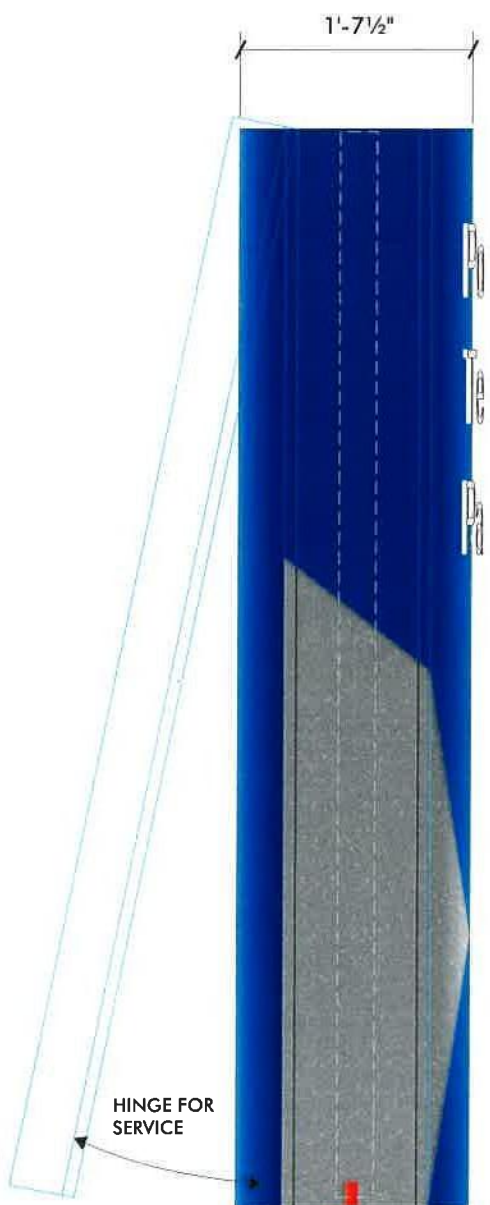
Gen Ref.:



SERIES 12 DETAIL



TOP VIEW - SECTION



HINGE FOR SERVICE



Portland
Technology
Park

S/C SERIES 12 CABINET #1612, ACCESS FRAME #1690
1/8" ALUMINUM RADIUS FACE (BLEED) WITH ROUTED OPENINGS FOR GRAPHICS,
ROUTED 1/2" CLEAR ACRYLIC COPY (PUSH THROUGH 1/4"),
1st AND 2nd SURFACE WHITE TRANSL. VINYL OVERLAY,
BACK LIT WITH WHITE 'LED' (277v) (1WATT 'ILT' SUMMIT),
(MEANWELL' POWER SUPPLIES)
CABINET PAINTED BLUE (PMS 288),
VINYL GRAPHIC ACCENT TRIANGLES:
MEDIUM GRAY (220-31)
TRAFFIC GRAY (220-151)

ALUMINUM VALANCE PAINTED (PMS COOL GRAY 11C)

3" STEEL SQ. TUBES WITH MATCHING PLATES

THREADED ROD ABOVE CONCRETE

PRE-CAST REINFORCED CONCRETE BASE AND (4) 3/4" STEEL ANCHOR BOLTS

277 VOLT ELECTRICAL FEED BY OWNER



RIGHT SIDE END VIEW

END VIEW

NEW S/F ILLUM. ID MONUMENT SIGN
SCALE: 3/4" = 1'-0" (1) REQUIRED