

GENERAL NOTES

1. PROJECT IS LOCATED IN THE I-1 ZONE.
2. TOTAL AREA OF THE PARCEL IS 2.47 ACRES
3. TOTAL PROPOSED PARKING SPACES - 96
OFFICE SPACE - 3,800 S.F. - 10 SPACES REQUIRED
WAREHOUSE SPACE - 30,200 S.F. - 30 SPACES REQUIRED
4. TOTAL REQUIRED PARKING SPACES - 40 SPACES
5. AREAS DESIGNATED AS PRESERVATION AREAS WILL BE SELECTIVELY THINNED SO AS TO REMOVE ONLY THE DISEASED AND DYING TREES.
6. PRESERVATION FENCES SHALL BE INSTALLED AT DRAPLINE OF TREES TO BE PRESERVED. NO GRADE CHANGES SHALL OCCUR, NO EQUIPMENT SHALL BE OPERATED AND NO WATER SHALL BE APPLIED TO THESE AREAS.

LEGEND

- 65 --- EXISTING CONTOURS
- 65 --- PROPOSED CONTOURS
- - - 42" W --- WATER LINE
- ==== CALVERT
- G --- GAS LINE
- U-E --- UNDERGROUND ELECTRIC
- S --- SEWER LINE
- --- EXISTING PAVEMENT LIMIT
- --- PROPOSED PAVEMENT LIMIT
- --- PRESERVATION AREA

CITY OF PORTLAND
APPROVED SITE PLAN
 SUBJECT TO DEPARTMENTAL CONDITIONS
 DATE OF APPROVAL 5/8/89

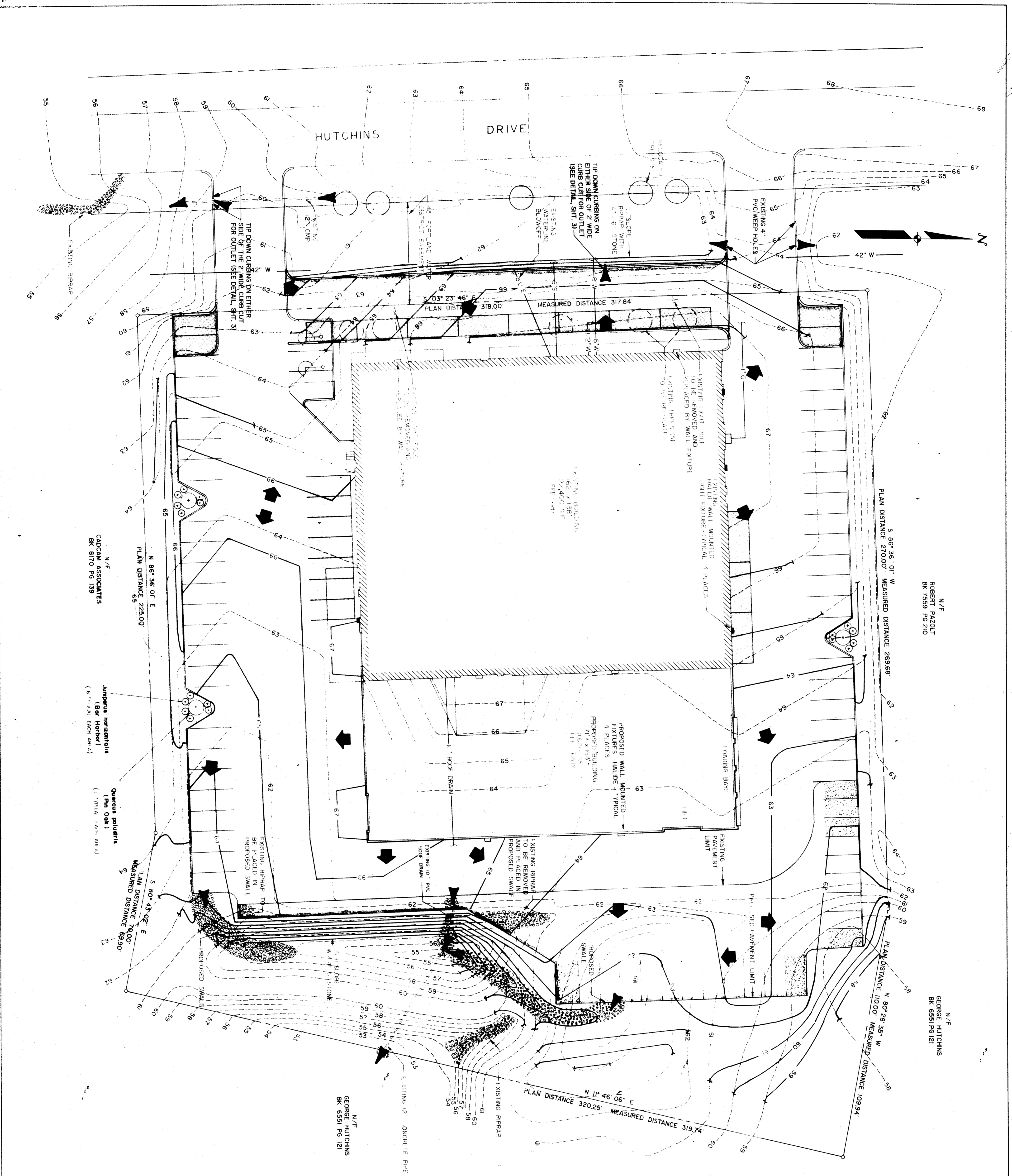
REV. 2	BY: GTW	DATE: 7/28/89	REGRADE FRONT LOT NEXT TO WATER LINE
1	BY: SMF	DATE: 7/21/89	PRESERVATION AREA, 2 PINE TREES, RELOCATED TREES IN FRONT, NOTE # 5
0	BY: SMF	DATE: 6/4/89	REVISE GRADING & RESUBMIT TO CITY
0	BY: SMF	DATE: 5/21/89	SUBMISSION TO THE CITY OF PORTLAND

REVISED SITE PLAN
 OF
FEDERAL EXPRESS BUILDING
 FOR
ROBERT ELDER ASSOCIATES
 50 WALK STREET
 BOSTON, MASSACHUSETTS

Stalberg Technics Inc.
 Land Engineers, Surveyors, Landscape Architects

841 SPRING STREET
 WESTBROOK, ME 04092
 TEL (207) 761-0359

DESIGN BY: SMH
 DRAWN BY: JET
 CHECKED BY: SMF
 DATE: 5-16-89
 SCALE: 1"=20'
 FIELD BK: 39
 PLOT NO: 88344



N/F
ROBERT PAZOLT
BK 7559 PG 210

N/F
GEORGE HUTCHINS
BK 6551 PG 121

N/F
GEORGE HUTCHINS
BK 6551 PG 121

N/F
CAGGAN ASSOCIATES
BK 8170 PG 153

N/F
Juniperus horizontalis
(6" SPACIAL EACH AM 2)

N/F
Quercus palustris
(1" SPACIAL 1 AM 1 AM 2)

LEGEND

- EXISTING CONTOURS
- 65 --- PROPOSED CONTOURS
- CULVERT
- EXISTING PAVEMENT LIMIT
- PROPOSED PAVEMENT LIMIT
- PROPOSED DRAINAGE FLOW
- ▲ PROPOSED POINTS OF FLOW CONCENTRATION

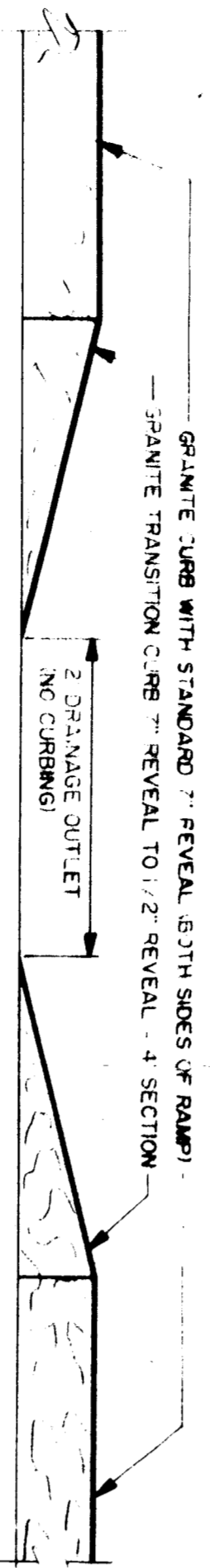
REV.	BY:	DATE:	STATUS:
B	GTW	7/21/89	RELOCATE EXISTING TREES IN FRONT LOT
A	SMF	6/14/89	SUBMISSION TO THE CITY OF PORTLAND

REVISED DRAINAGE PLAN
OF
FEDERAL EXPRESS BUILDING
FOR
ROBERT ELDER ASSOCIATES
50 MILK STREET
BOSTON, MASSACHUSETTS

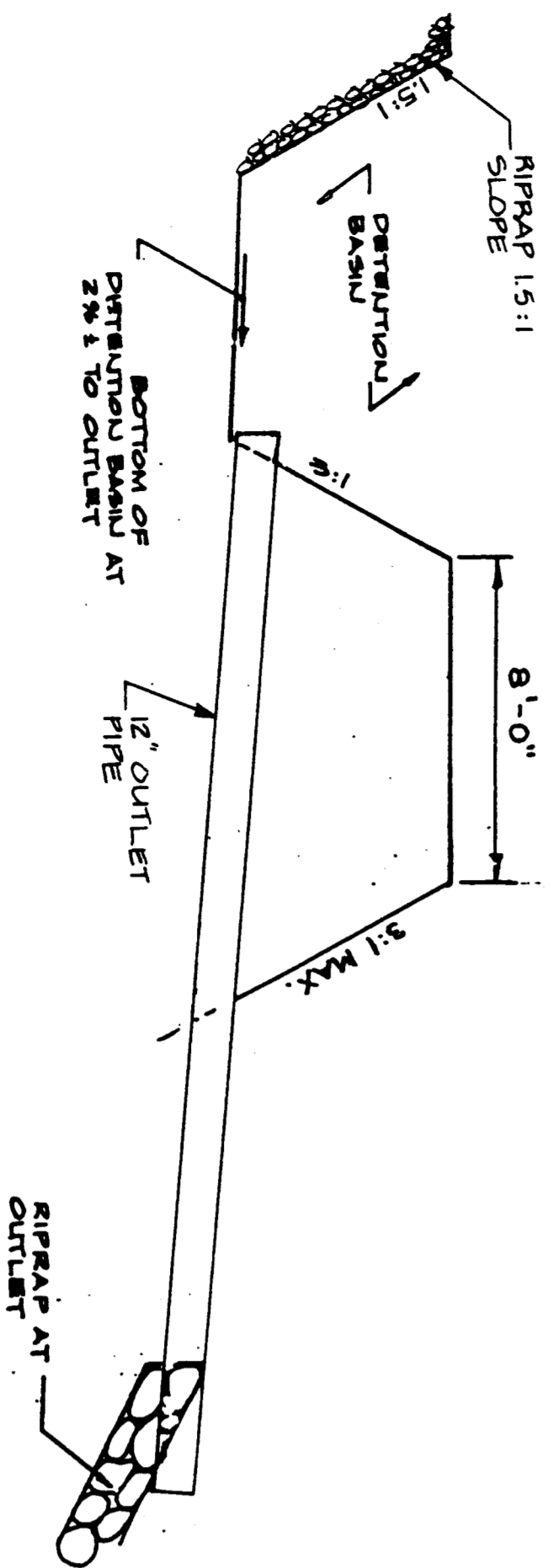
Shevco Technics Inc.
(Civil Engineers, Surveyors, Landscape Architects)

841 SPRING STREET
WESTBROOK, ME 04092
TEL (207) 761-0359

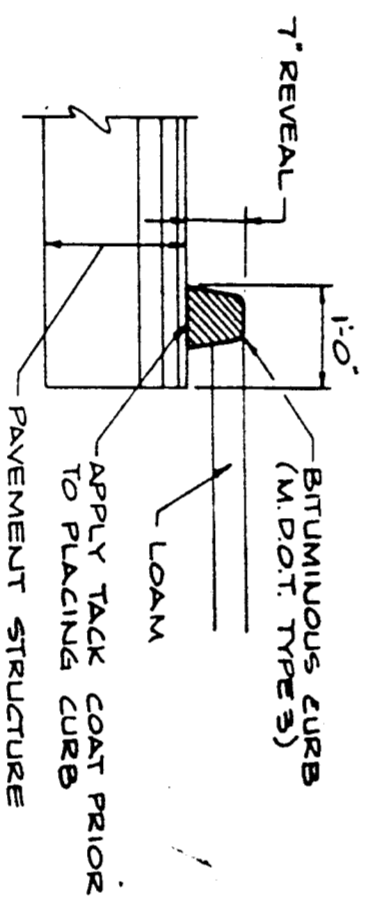
DESIGN BY:	SMH
DRAWN BY:	JET
CHECKED BY:	SMF
DATE:	6/14/89
SCALE:	1" = 20'
FIELD BK:	39
PROJ. NO.:	98344



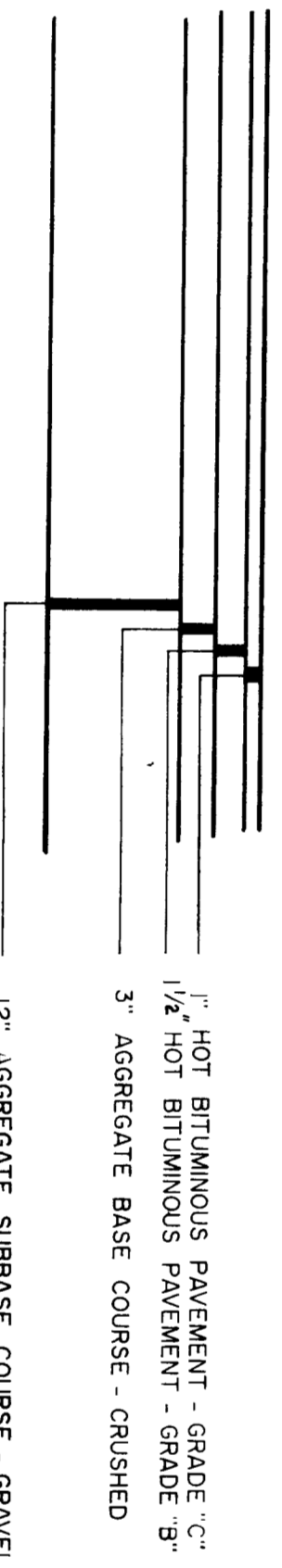
DRAINAGE OUTLET / CURB CUT DETAIL
N.T.S.



DETENTION BASIN AND OUTLET
NOT TO SCALE



BITUMINOUS CURB
SCALE: 1/2"=1'-0"



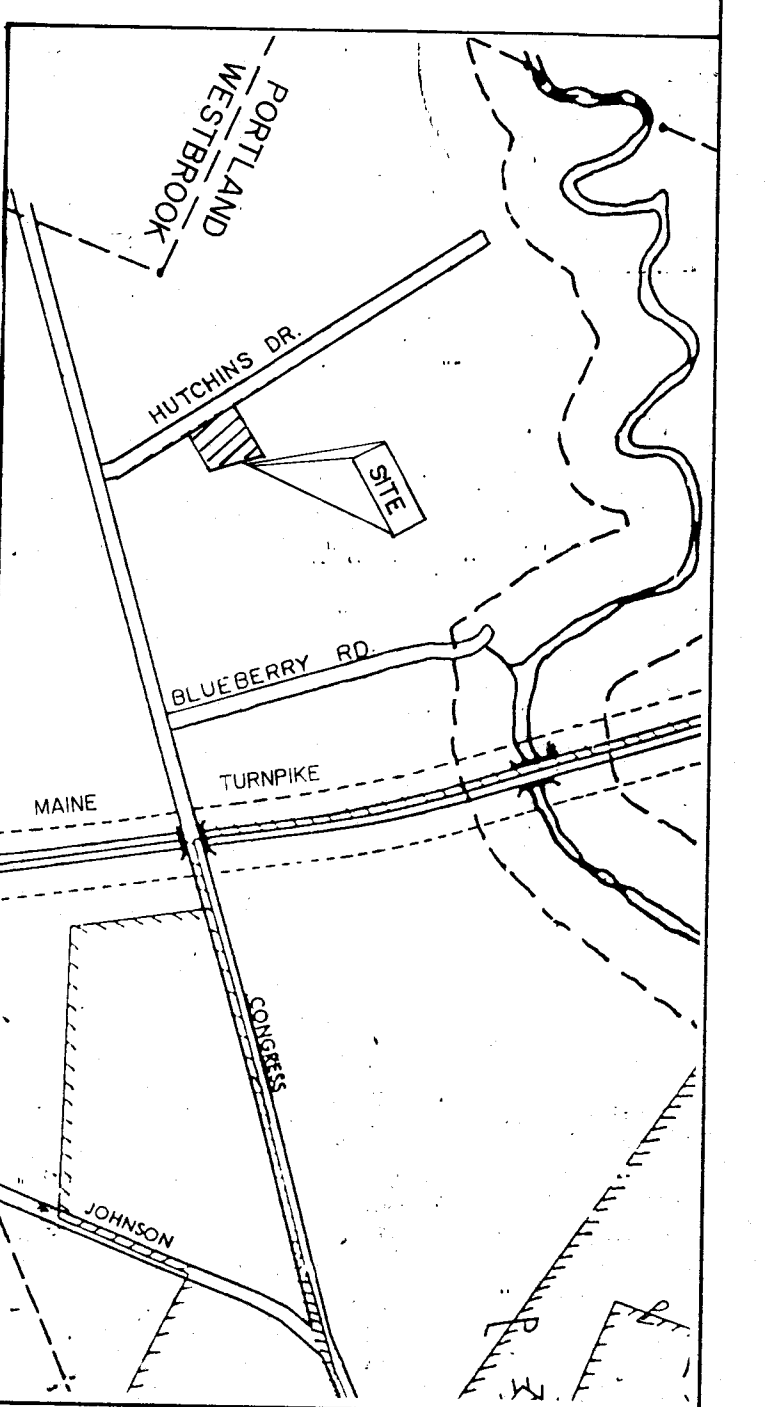
TYPICAL PAVEMENT SECTION
N.T.S.

REV.	BY	DATE	STATUS
1	SMF	5/21/89	SUBMISSION TO CITY OF PORTLAND

DETAIL SHEET
OF
FEDERAL EXPRESS BUILDING
FOR
ROBERT ELDER ASSOCIATES
50 MILK STREET
BOSTON, MASSACHUSETTS

SEBAGO TECHNICS INC.
CIVIL ENGINEERS, SURVEYORS, LANDSCAPE ARCH.
841 SPRING STREET
WESTBROOK, MAINE 04092
TEL. (207) 761-0359

DESIGN BY SMF
DRAWN BY GTW
CHECKED BY SMF
DATE 5-31-89
SCALE N.T.S.
FIELD BOOK 39
PROJECT NO. 88344
SHEET 3 OF 3



GENERAL NOTES

1. PROJECT IS LOCATED IN THE I-1 ZONE.
2. TOTAL AREA OF THE PARCEL IS 2.47 ACRES
3. TOTAL PROPOSED PARKING SPACES - 82
OFFICE SPACE - 3,800 S.F. - 10 SPACES REQUIRED
WAREHOUSE SPACE - 70,200 S.F. - 30 SPACES REQUIRED
TOTAL REQUIRED PARKING SPACES - 40 SPACES
4. HALIDE LIGHT FIXTURES SHALL BE CUT-OFF LUMINAIRE
5. AREAS DESIGNATED AS PRESERVATION AREAS WILL BE SELECTIVELY THINNED SO AS TO REMOVE ONLY THE DISEASED AND DYING TREES.
6. PRESERVATION FENCES SHALL BE INSTALLED AT DRIPLINE OF TREES TO BE PRESERVED. NO GRADE CHANGES SHALL OCCUR. NO EQUIPMENT SHALL BE OPERATED AND NO MATERIALS SHALL BE STORED WITHIN DRIPLINES OF TREE TO BE PRESERVED.

LEGEND

- 65 - - - - - EXISTING CONTOURS
- 65 - - - - - PROPOSED CONTOURS
- 42" W - - - - - WATER LINE
- - - - - CULVERT
- - - - - GAS LINE
- G - - - - - UNDERGROUND ELECTRIC
- UE - - - - - SEWER LINE
- 6" S - - - - - EXISTING PAVEMENT LIMIT
- - - - - PROPOSED PAVEMENT LIMIT
- - - - - PRESERVATION AREA

CITY OF PORTLAND
APPROVED SITE PLAN

SUBJECT TO ENVIRONMENTAL CONDITIONS

(Signature)

REV.	BY:	DATE:	STATUS:
F	SMF	10/3/89	RE-GRADE BRICK PARKING AREA, SUBMIT TO CITY ENGINEER
E	GTW	8/8/89	REVISE GRADING TO MAINTAIN EXISTING LOADING DOCK, ELIMINATE 3 PARKING
D	GTW	7/29/89	PREGRAD FROUNT LOT NEXT TO WATER LINE
C	SMF	7/21/89	PRESERVATION AREA, 2 PINE TREES, RELOCATED TREES IN FRONT, NOTE # 5
B	SMF	6/14/89	REVISE GRADING & RESUBMIT TO CITY
A	SMF	5/31/89	SUBMISSION TO THE CITY OF PORTLAND

REVISED SITE PLAN
OF
FEDERAL EXPRESS BUILDING
FOR
ROBERT ELDER ASSOCIATES
50 MILK STREET
BOSTON, MASSACHUSETTS

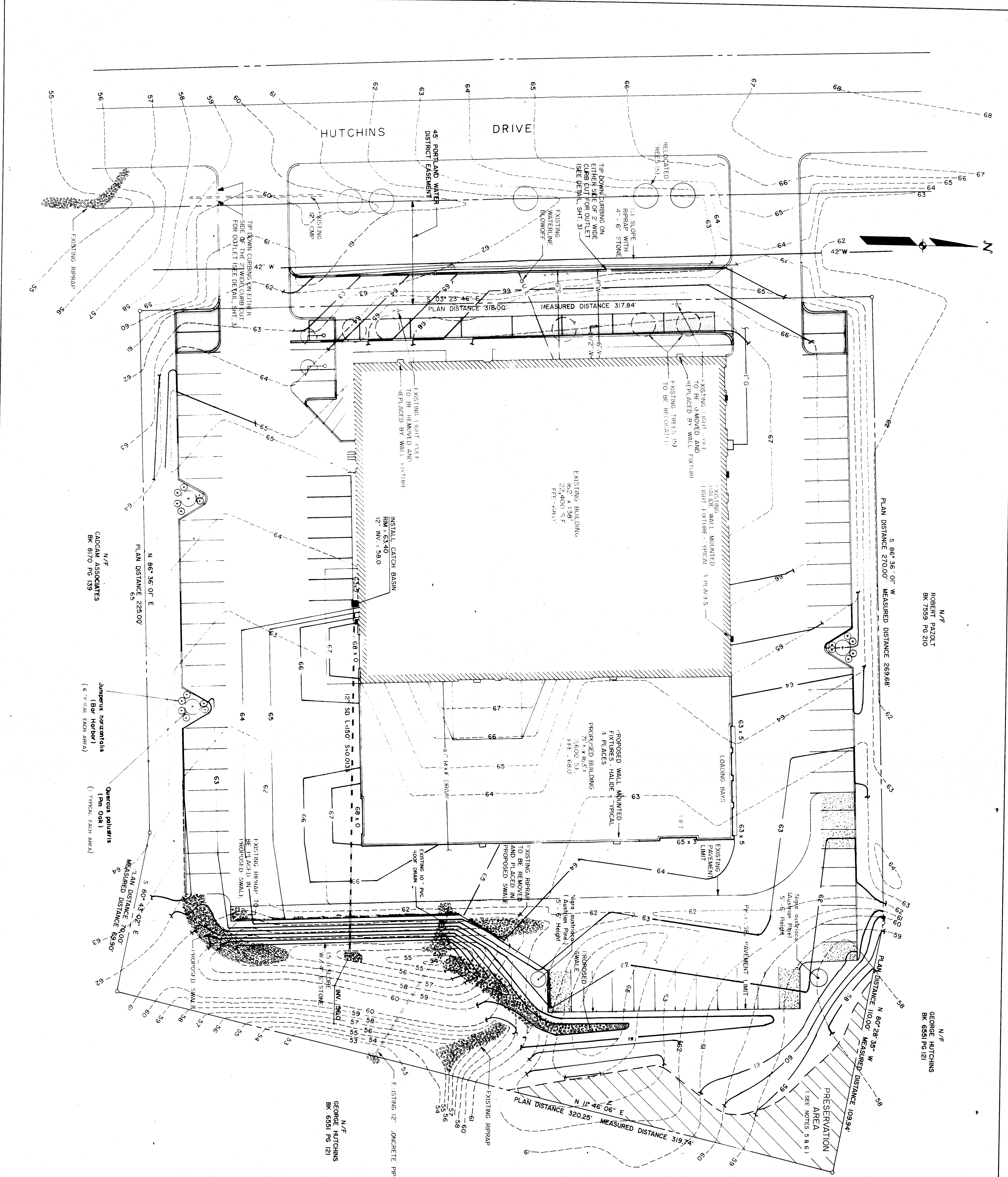
SP *Spelago Technics Inc.*

(Signature)

841 SPRING STREET
WESTBROOK, ME 04092
TEL (207) 761-0359

DESIGN BY: SMH
DRAWN BY: JET
CHECKED BY: SMF
DATE: 5-16-89
SCALE: 1/8"=1'-0"
FIELD BK: 39
PROJ. NO.: 88344

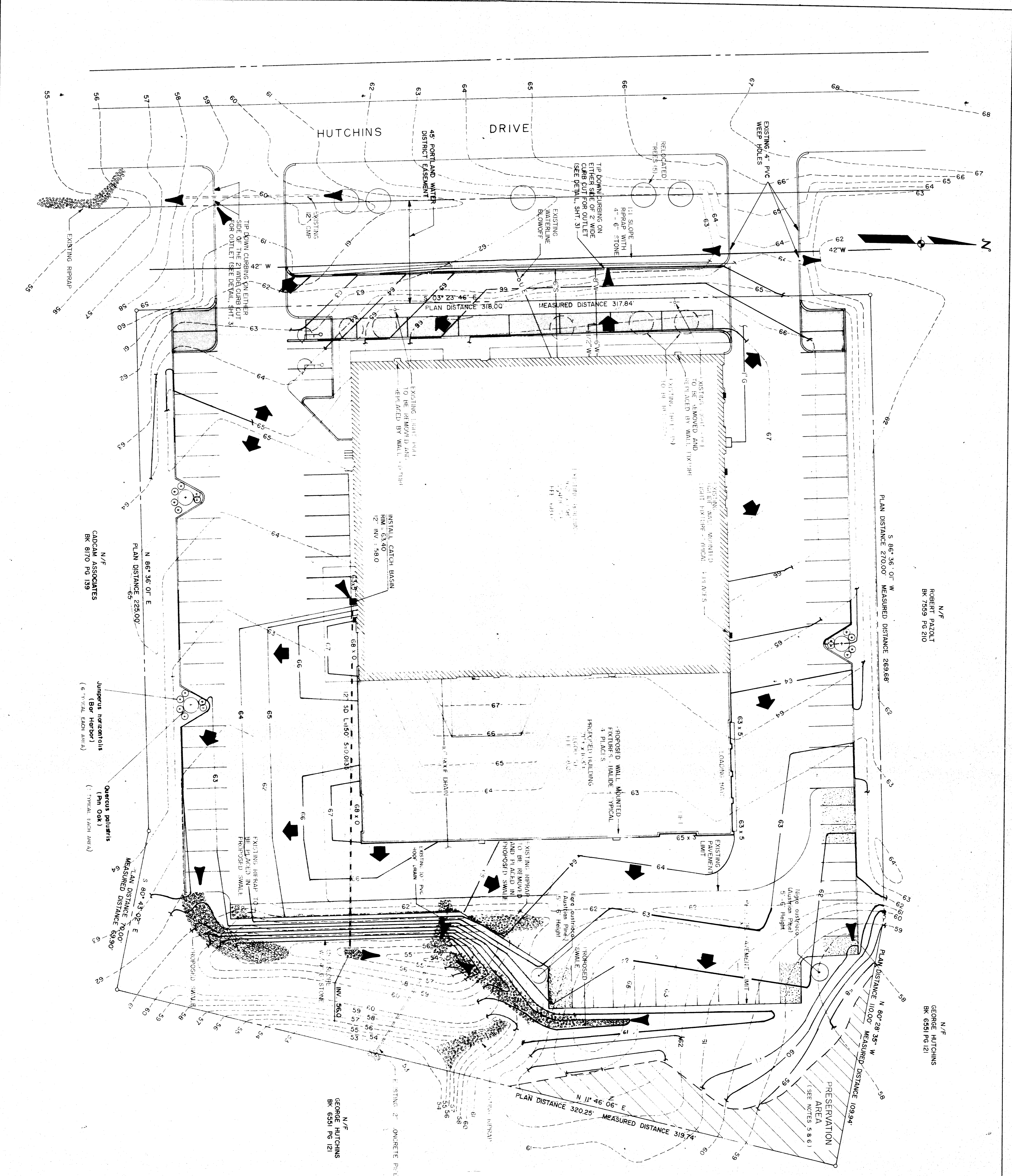
SHEET 1 OF 3



N/F
CADCAM ASSOCIATES
BK 8170 PG 139

N/F
ROBERT PAZOLI
BK 7559 PG 210

N/F
GEORGE HUTCHINS
BK 6551 PG 121



N/F
ROBERT PAZOLI
BK 7599 PG 210

N/F
GEORGE HUTCHINS
BK 6591 PG 121

N/F
GEORGE HUTCHINS
BK 6591 PG 121

N/F
CADAM ASSOCIATES
BK 8170 PG 139

Juniperus horizontalis
(See Herbar)

Quercus palustris
(Pin Oak)

PRESERVATION
AREA
(SEE NOTES 5 & 6)

LEGEND

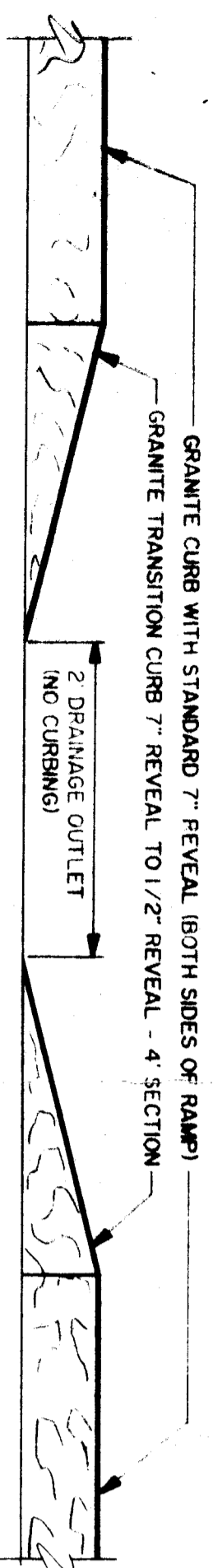
- 65 --- EXISTING CONTOURS
- 65 — PROPOSED CONTOURS
- ===== CULVERT
- ➔ PROPOSED DRAINAGE FLOW
- ▲ PROPOSED POINTS OF FLOW CONCENTRATION

REV.	DATE	DESCRIPTION
D	10/3/89	RE-GRADE BLACK PARKING AREA
C	9/17/89	GRADING OF LOT TO UTILIZE EXISTING LOADING DOCK
B	7/21/89	RELOCATED TREES IN THE FRONT LOT
A	6/14/89	SUBMISSION TO THE CITY OF PORTLAND

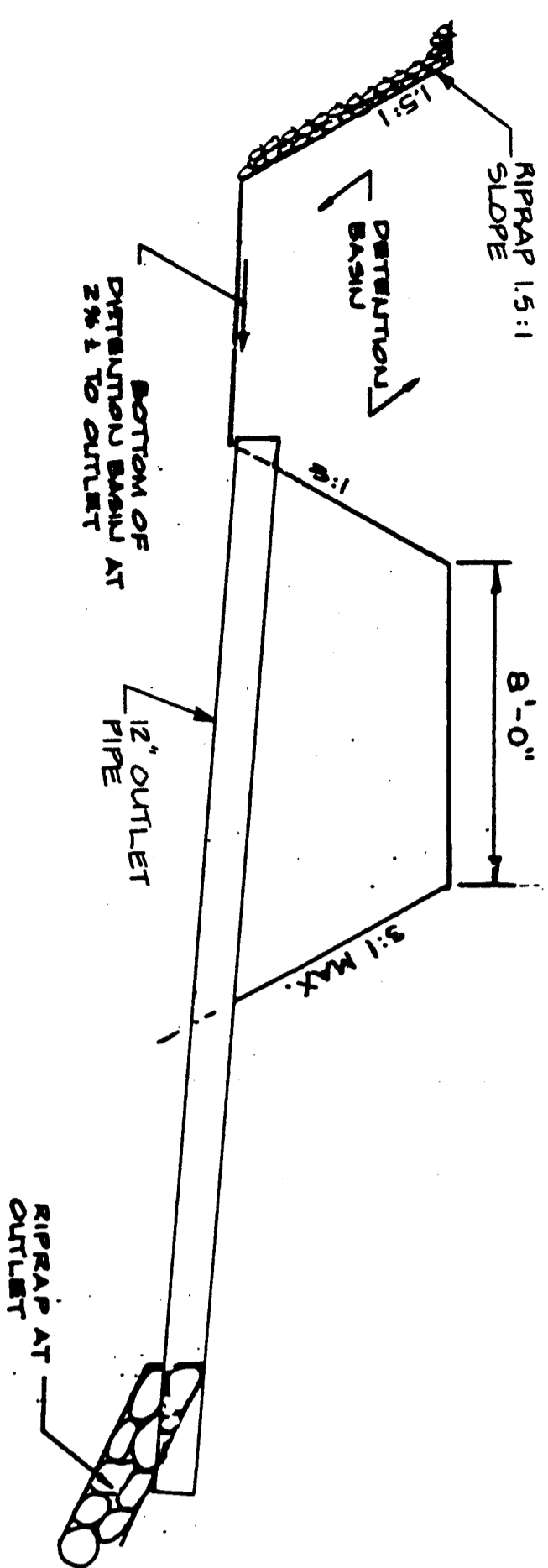
REVISED DRAINAGE PLAN
FEDERAL EXPRESS BUILDING
ROBERT ELDER ASSOCIATES
30 WALK STREET
BOSTON, MASSACHUSETTS

SPi
Stetson & Partners Inc.
Civil Engineers, Surveyors, Landscape Architects
841 SPRING STREET
WESTBROOK, ME 04092
TEL (207) 761-0359

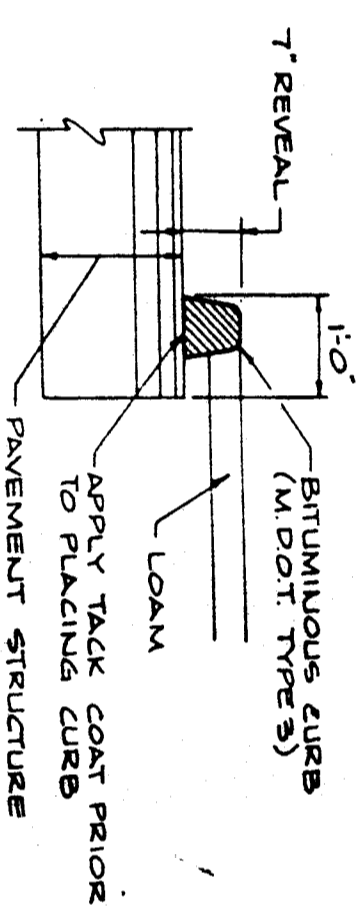
DESIGN BY: SMF
DRAWN BY: JET
CHECKED BY: SMF
DATE: 5-16-89
FIELD BK: 39
PROJ. NO: 89344
SHEET 2 OF 3



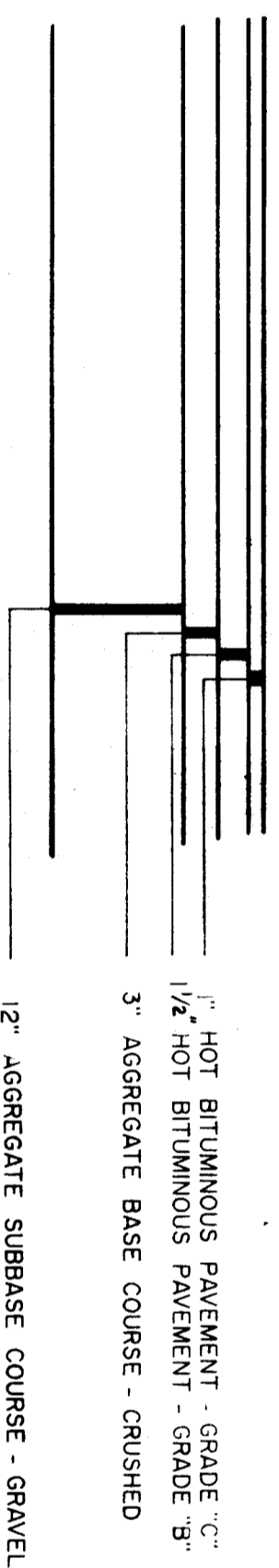
DRAINAGE OUTLET / CURB CUT DETAIL
N.T.S.



DETENTION BASIN AND OUTLET
NOT TO SCALE



BITUMINOUS CURB
SCALE: 1/2" = 1'-0"



TYPICAL PAVEMENT SECTION
N.T.S.

REV.	BY	DATE	STATUS
	SMF	5/21/89	SUBMISSION TO CITY OF PORTLAND

DETAIL SHEET
OF
FEDERAL EXPRESS BUILDING
FOR
ROBERT ELDER ASSOCIATES
50 MILK STREET
BOSTON, MASSACHUSETTS

DESIGN BY: SMH
DRAWN BY: GTW
CHECKED BY: SMF
DATE: 5-21-89
SCALE: N.T.S.
FIELD BOOK: 39
PROJECT NO.: 88344
SHEET 3 OF 3

SEBAGO TECHNICS INC.
CIVIL ENGINEERS, SURVEYORS, LANDSCAPE ARCH.
841 SPRING STREET
WESTBROOK, MAINE 04092
TEL. (207) 761-0359