

**PLAN NOTES:**

- SEE G-001 FOR GENERAL PROJECT NOTES, LEGENDS AND ABBREVIATIONS.
- SEE G-002 FOR GENERAL MOUNTING HEIGHTS, AND PARTITION TYPES.
- SEE G-003 FOR TOP OF WALL DETAILS.
- CONTRACTOR IS RESPONSIBLE FOR REVIEWING CODE COMPLIANCE PLANS AND NOTIFYING THE ARCHITECT OF CONFLICTS BETWEEN WHAT IS IN THE FIELD AND ON THE CODE DOCUMENTS.
- DIMENSIONS ARE FACE OF CONCRETE, FACE OF MASONRY AND CENTERLINE OF STUD, UNLESS NOTED OTHERWISE.
- DOOR JAMBS (HINGE SIDE) SHALL BE 6" FROM CORNER IN STUD PARTITIONS AND 8" FROM CORNER IN MASONRY PARTITIONS UNLESS NOTED OTHERWISE.
- REFER TO DETAILS FOR ADDITIONAL DIMENSIONING INFORMATION.
- REFER TO ENLARGED PLANS FOR PARTITION TYPES AND DIMENSIONS IN AREAS WHICH ARE DETAILED AT A LARGER SCALE.
- FURNITURE AND OWNER PROVIDED EQUIPMENT ARE INDICATED BY HALF-TONED LINEWORK.
- CONTRACTOR IS RESPONSIBLE FOR THE COORDINATION OF OWNER PROVIDED EQUIPMENT INCLUDING BUT NOT LIMITED TO DIMENSIONAL INFORMATION AND MECHANICAL, ELECTRICAL AND PLUMBING REQUIREMENTS.

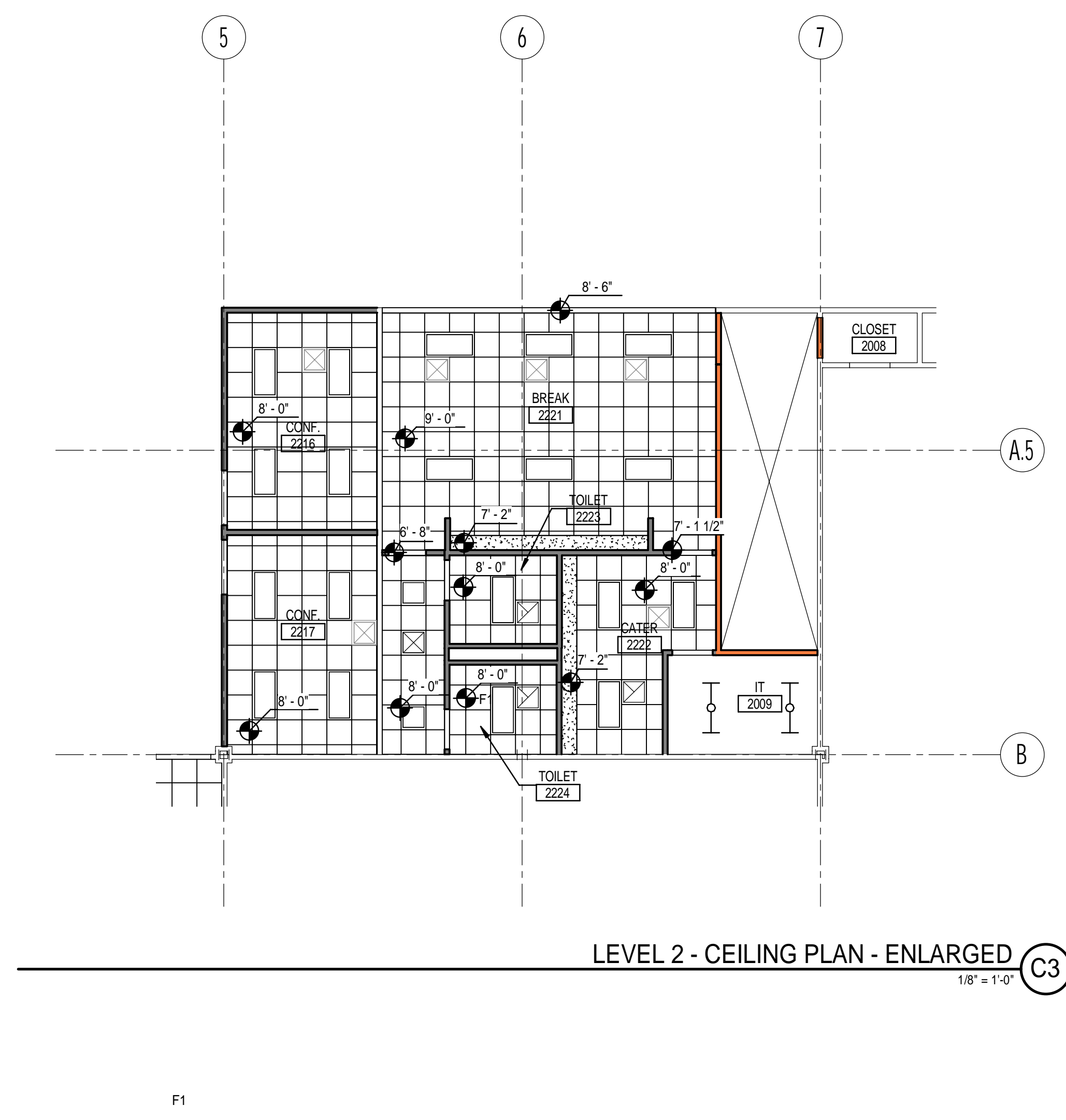
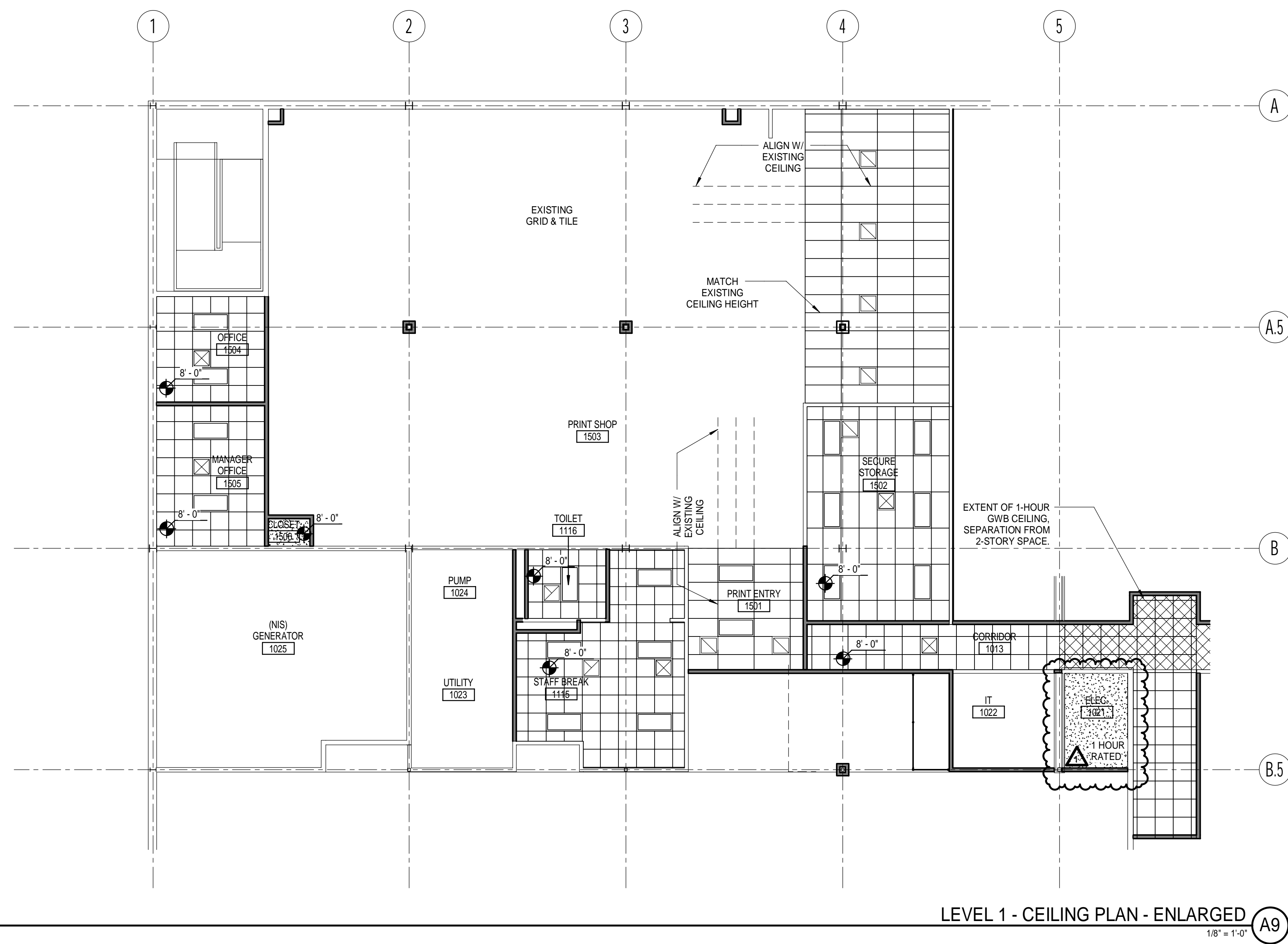
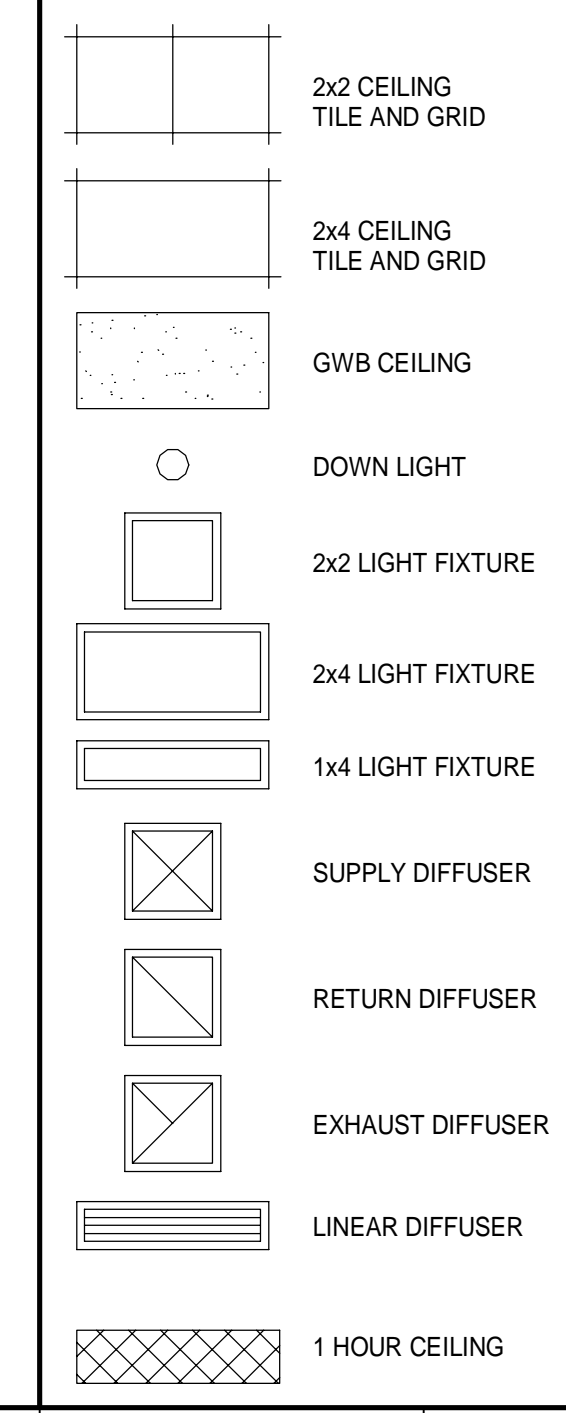
**TOILET ACCESSORIES**

TAG	DESCRIPTION
11	SOAP DISPENSER
12	PAPER TOWEL DISPENSER
13	TOILET PAPER DISPENSER
14	GRAB BARS (36" AND 42")
15	18" X 36" MIRROR

**CILING NOTES:**

- SEE G-001 FOR GENERAL PROJECT NOTES.
- SEE FINISH SCHEDULE FOR CEILING AND CEILING GRID TYPES.
- EXCEPT WHERE INDICATED, CENTER CEILING GRIDS IN ROOMS. USE HALF TILES OF GREATER @ PERIMETERS WHEN POSSIBLE.
- ALIGN CEILING ITEMS AS SHOWN, WITH COMMON CENTERLINES TYPICALLY. CENTER ITEMS IN CEILING, OR IN AREAS UNLESS INDICATED OTHERWISE.
- WHERE REGULAR OR BEVELED TILE IS USED, PAINT ALL CUT EDGES TO MATCH.
- CAULK JOINT BETWEEN CEILING GRID (WALL ANGLE) AND WALL WHERE GAPS ARE LARGER THAN 1/8" OR GREATER.
- PROVIDE ACCESS PANELS AS REQUIRED IN GWB CEILINGS FOR ACCESS AS REQUIRED BY ALL TRADES.
- FIRE SPRINKLERS SHALL BE CENTERED IN CEILING TILE OR HALF TILE AS SHOWN. FIRE SPRINKLERS SHALL BE LOCATED IN ALIGNMENT WITH OTHER CEILING ITEMS AND SHALL BE PLACED IN COORDINATION WITH LIGHT FIXTURE POSITIONS INDICATED. TYPICAL.
- FIRE PROTECTION CONTRACTOR SHALL BE RESPONSIBLE FOR PROVIDING A COMPLETE AND FULLY CODE COMPLIANT SYSTEM, INCLUDING HEADS NOT INDICATED IN THIS DRAWING. SIDEWALL MOUNT SPRINKLER HEADS UNDER BALCONIES ARE NOT SHOWN IN THE CEILING PLANS.
- SEE MECHANICAL, ELECTRICAL AND PLUMBING DRAWINGS FOR ADDITIONAL INFORMATION.
- WHERE ARCHITECTURAL DRAWINGS DEPICT MECHANICAL OR ELECTRICAL ITEMS OR EQUIPMENT (LIGHTS, DIFFUSERS, ETC.) INSTALLATION OF SUCH ITEMS SHALL BE COORDINATED WITH EACH RESPECTIVE TRADE SUB-CONTRACTOR.
- WHERE DRAWINGS DO NOT ACCESS INSTALLATION METHODOLOGY, THE CONTRACTOR SHALL BE BOUND TO PERFORM IN STRICT COMPLIANCE WITH THE MANUFACTURER'S SPECIFICATIONS, AND STANDARD INDUSTRY STANDARDS.

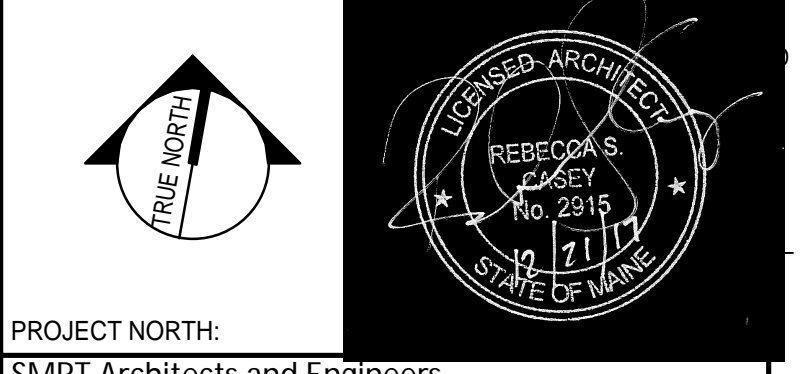
**CEILING LEGEND:**



REV	DESCRIPTION	DATE
1	SUPPLEMENTAL INSTRUCTION 002	2-6-18
0	ISSUED FOR CONSTRUCTION	12-21-17

**SUPPLEMENTAL INSTRUCTION 002**  
2-6-18

CURRENT ISSUE STATUS:



PROJECT NORTH:  
SMRT Architects and Engineers  
144 Fore Street/P.O. Box 618  
Portland, Maine 04104

**MAINE MEDICAL CENTER  
M.M.C. HUTCHINS DRIVE  
RENOVATION**  
PROJECT LOCATION  
**ENLARGED PLANS**

SHEET TITLE:

SCALE: AS NOTED

PROJECT MANAGER:	RSC	PROJECT NO.:	17123
A/E OF RECORD:	RSC		
JOB CAPTAIN:	SDL		
DRAWN BY:	SDL/JMM		
SMRT FILE:	AE401-17123	SHEET NO.:	AE401