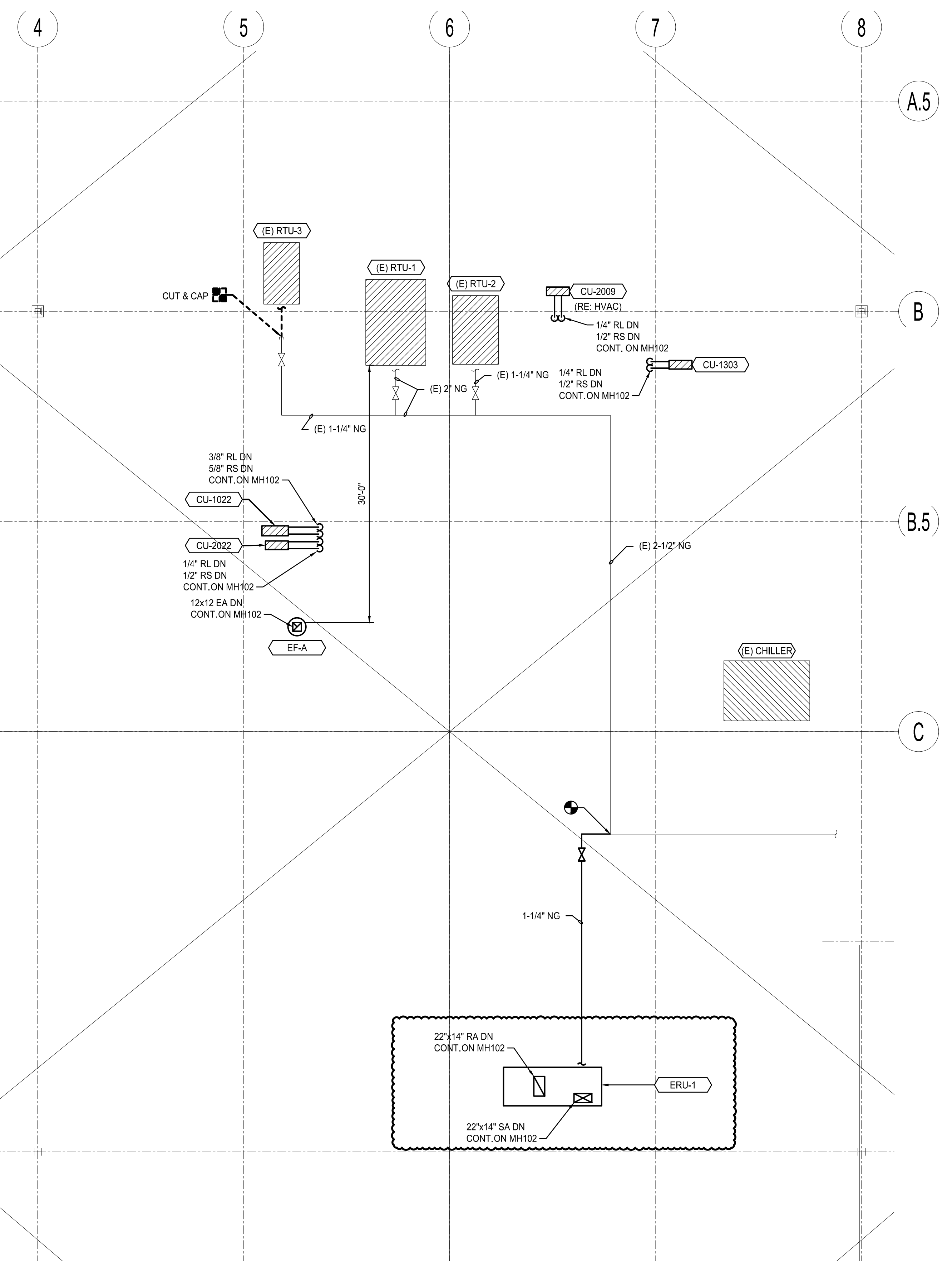
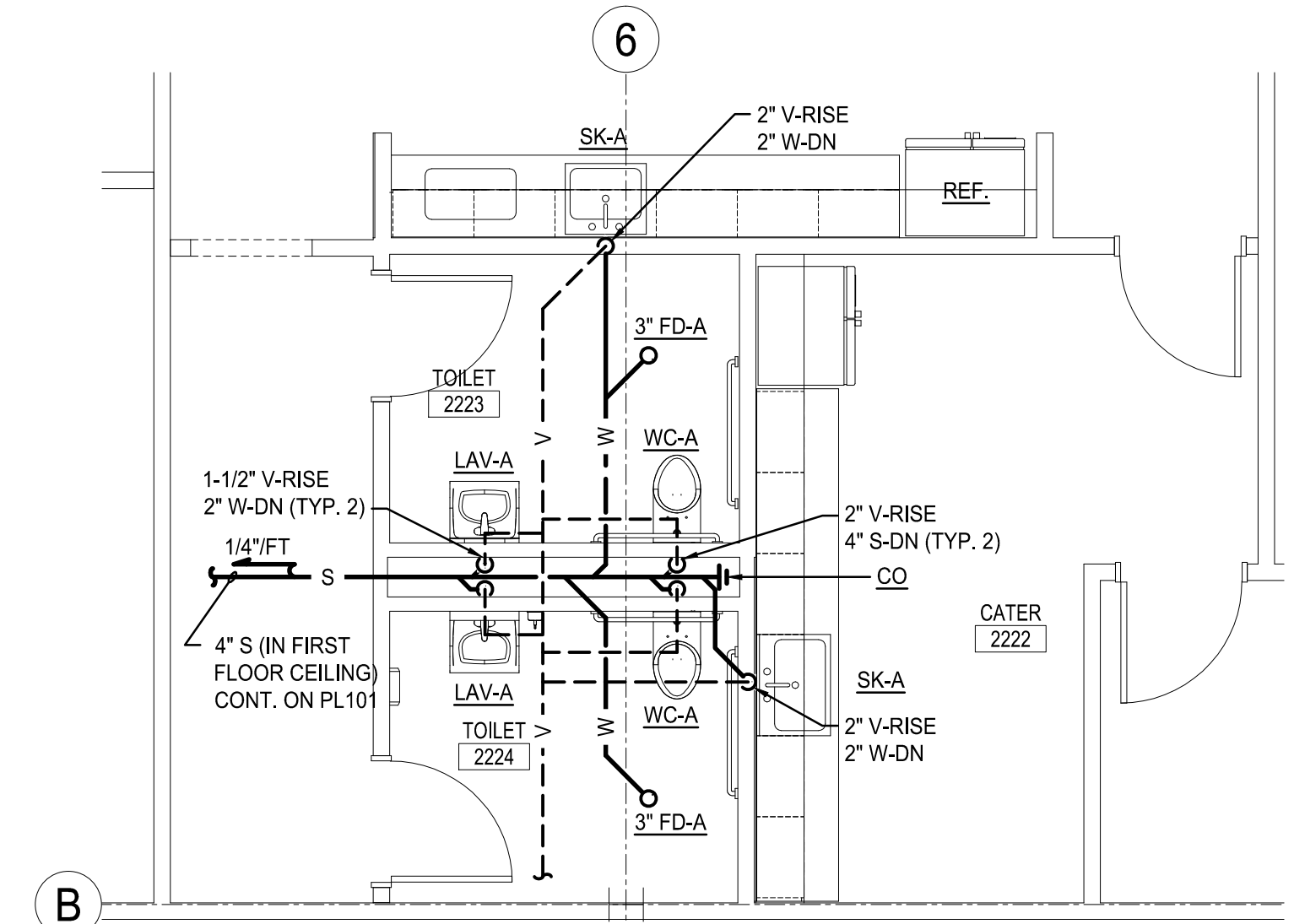


NOTE:
1. SEE SHEET PL001 FOR LEGEND AND ABBREVIATIONS.

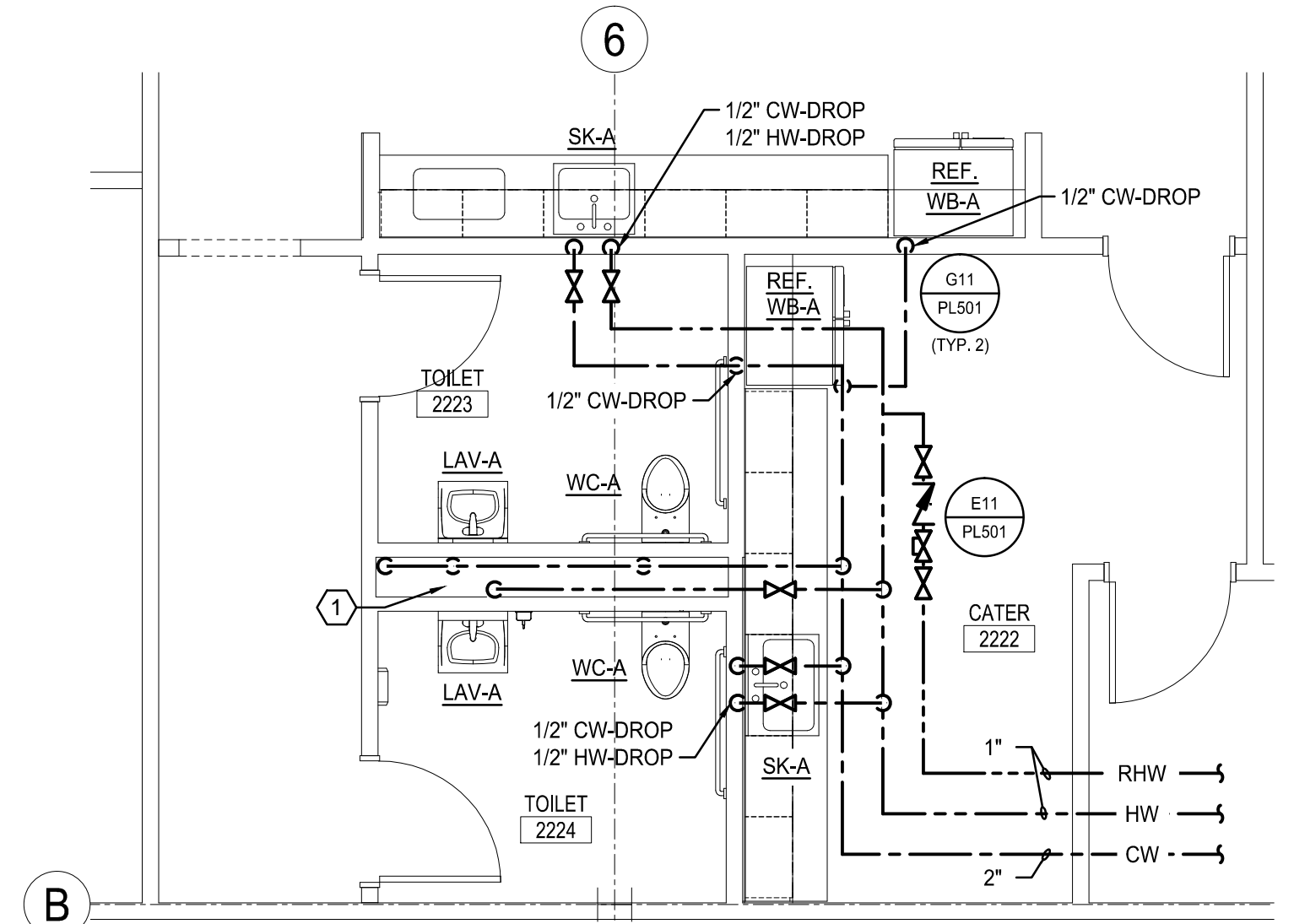
KEYNOTES	
KEYNOTE NUMBER	KEYNOTE DESCRIPTION
1	2" CW-DROP, RUN FULL LENGTH OF CHASE THEN DOWN THROUGH CHASE TO FIRST FLOOR CEILING. ROUTE 1" CW TO EACH WC, PROVIDE WATER HAMMER ARRESTOR PRIOR TO CONNECTION OF LAST WC WITH SHUT-OFF VALVE - ACCESSIBLE. ROUTE 1/2" CW TO EACH LAV. 1/2" HW DROP. ROUTE 1/2" HW TO EACH LAV.
2	2" CW-DROP, RUN FULL LENGTH OF CHASE. ROUTE 1" CW TO WC-A, PROVIDE WATER HAMMER ARRESTOR PRIOR TO CONNECTION WITH SHUT-OFF VALVE - ACCESSIBLE. ROUTE 1/2" CW TO LAV-A. ROUTE 1/2" CW TO SK-A AND 1/2" CW TO REF. ROUTE 1/2" HW TO LAV-A. ROUTE 1/2" HW TO SK-A.
3	2" V-RISE, 4" S-DN



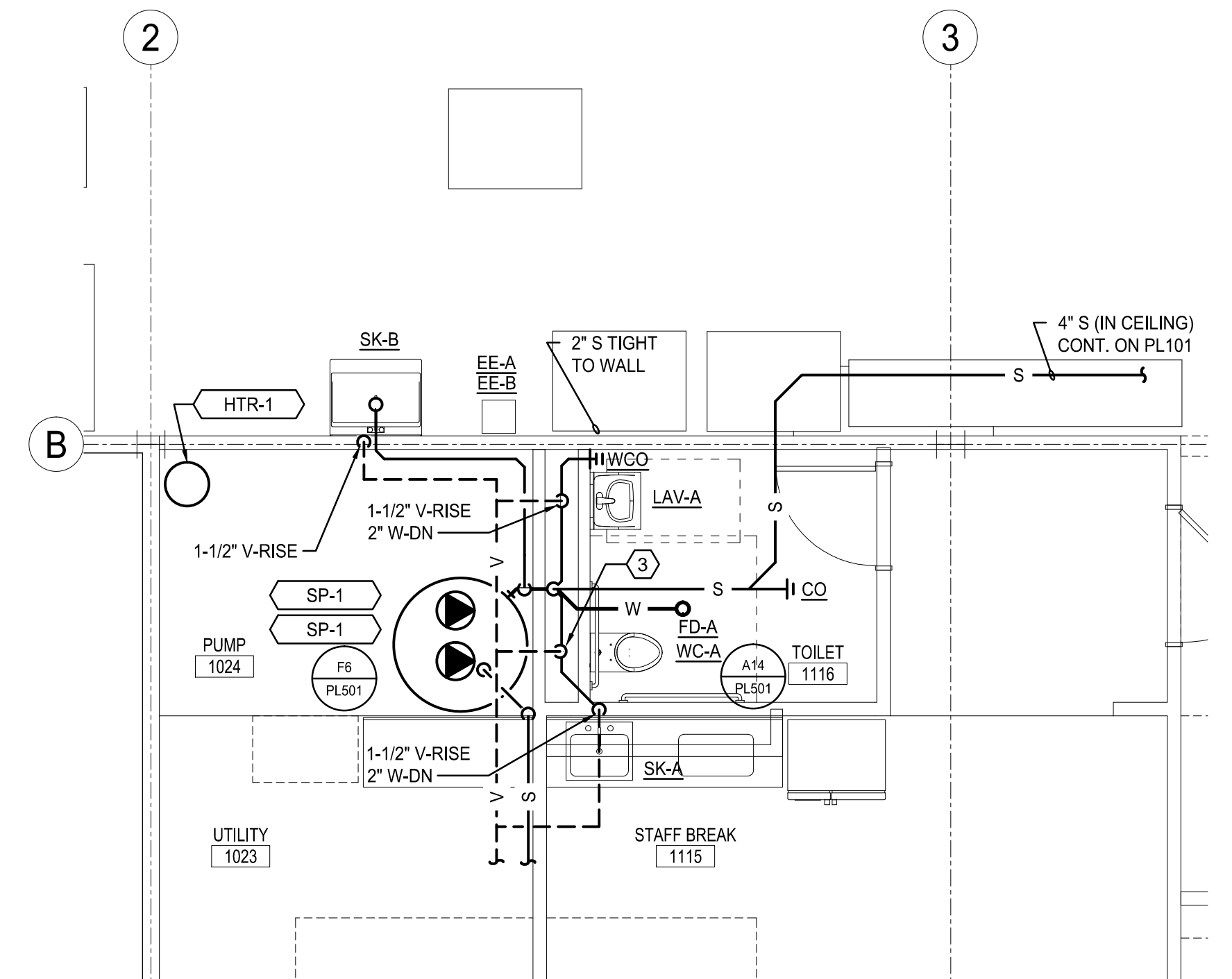
PLUMBING ROOF PART PLAN (A12)
1/8" = 1'-0"



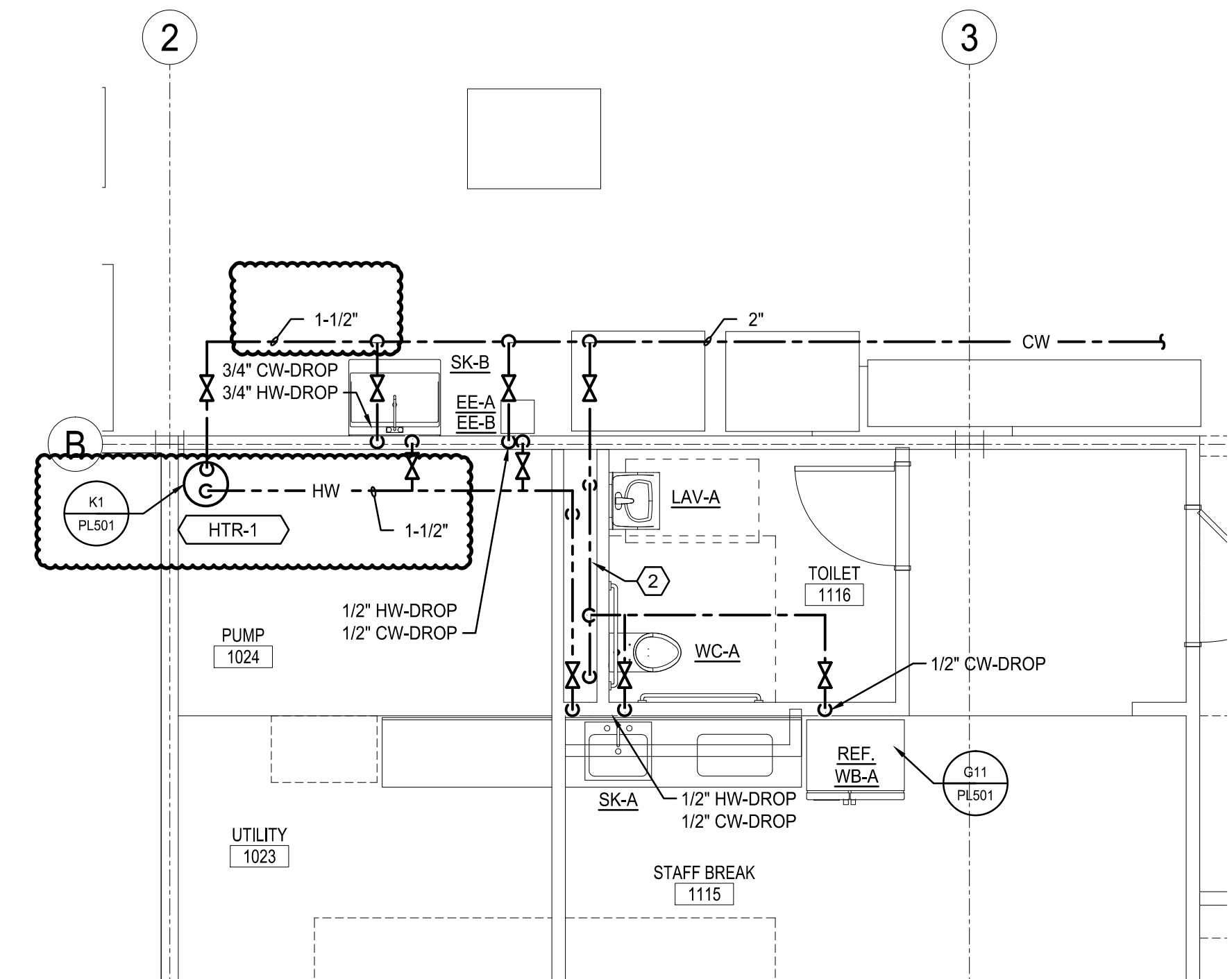
SECOND FLOOR DWV PIPING PART PLAN (F7)
1/4" = 1'-0"



SECOND FLOOR SUPPLY PIPING PART PLAN (F1)
1/4" = 1'-0"



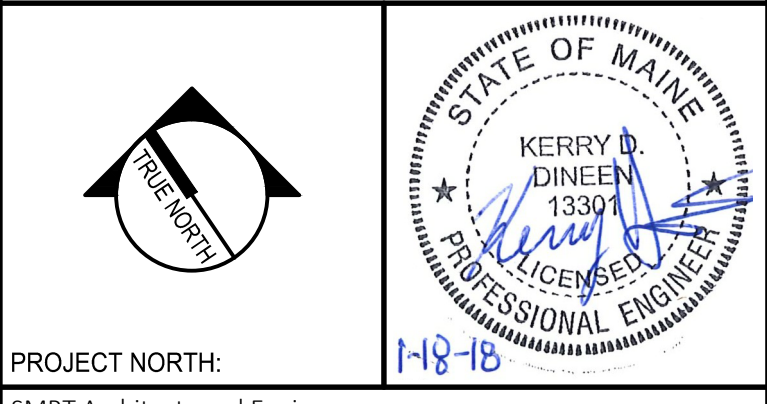
FIRST FLOOR DWV PIPING PART PLAN (A7)
1/4" = 1'-0"



FIRST FLOOR SUPPLY PIPING PART PLAN (A1)
1/4" = 1'-0"

REV	DESCRIPTION	DATE
1	ADDENDUM 1	1-9-18
0	ISSUED FOR CONSTRUCTION	12-21-17

ISSUED FOR CONSTRUCTION
12-21-17



PROJECT NORTH:
SMRT Architects and Engineers
144 Fore Street
Portland, Maine 04104
1.877.700.7678
www.smrtinc.com

ARCHITECTURE | ENGINEERING | PLANNING | INTERIORS | ENERGY | SMRT
**MAINE MEDICAL CENTER
M.M.C. HUTCHINS DRIVE
RENOVATION
102 HUTCHINS DRIVE PORTLAND, ME
PLUMBING PART PLANS**

SHEET TITLE: 0 1/4" 1/2" 1" 2" 3"	
SCALE: AS NOTED	PROJECT NO.: 17123
PROJECT MANAGER: RSC	AVE OF RECORD: KDD
JOB CAPTAIN: SDL	DRAWN BY: CWF
SMRT FILE: PL401-17123	SHEET NO. PL401