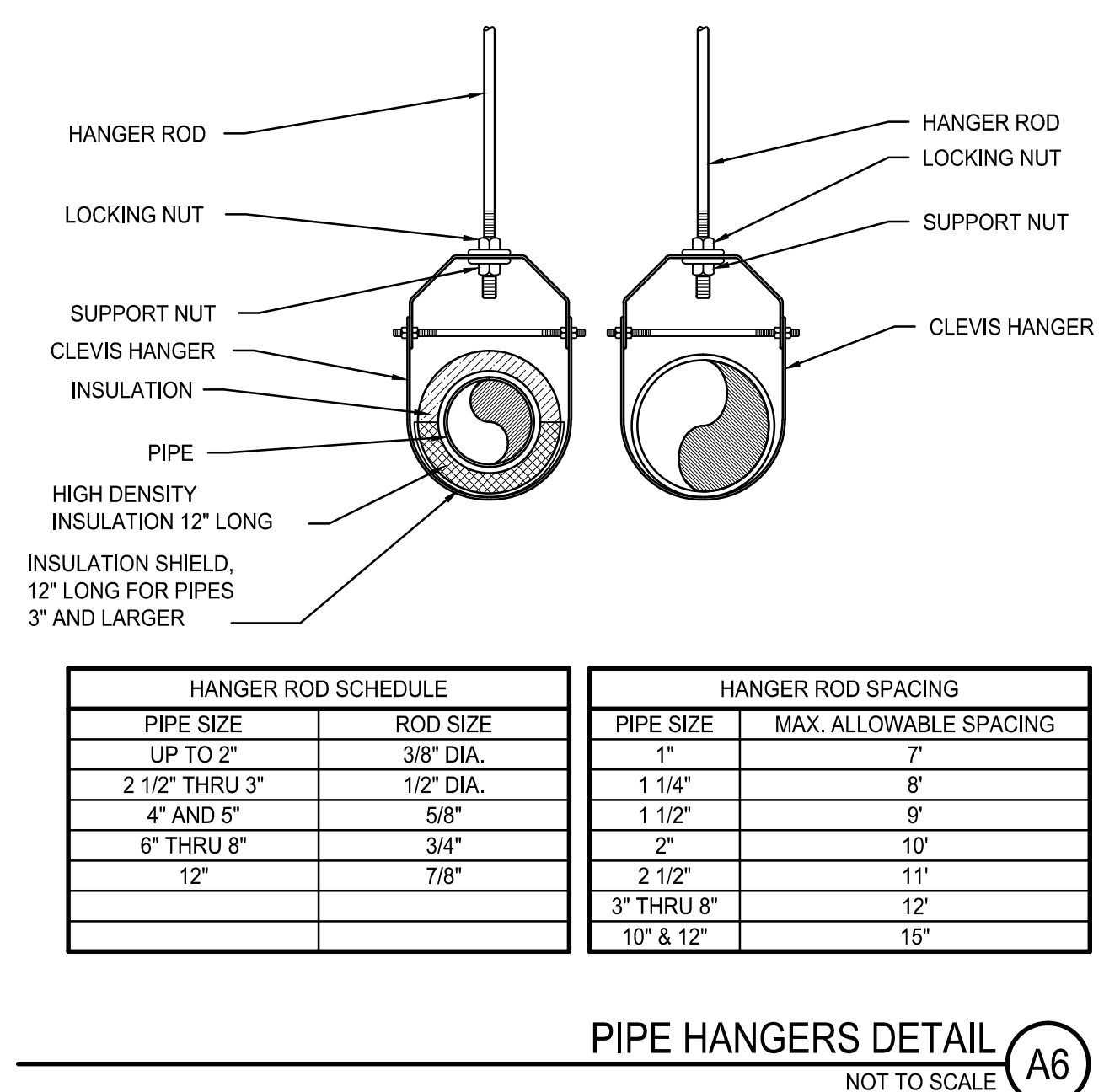
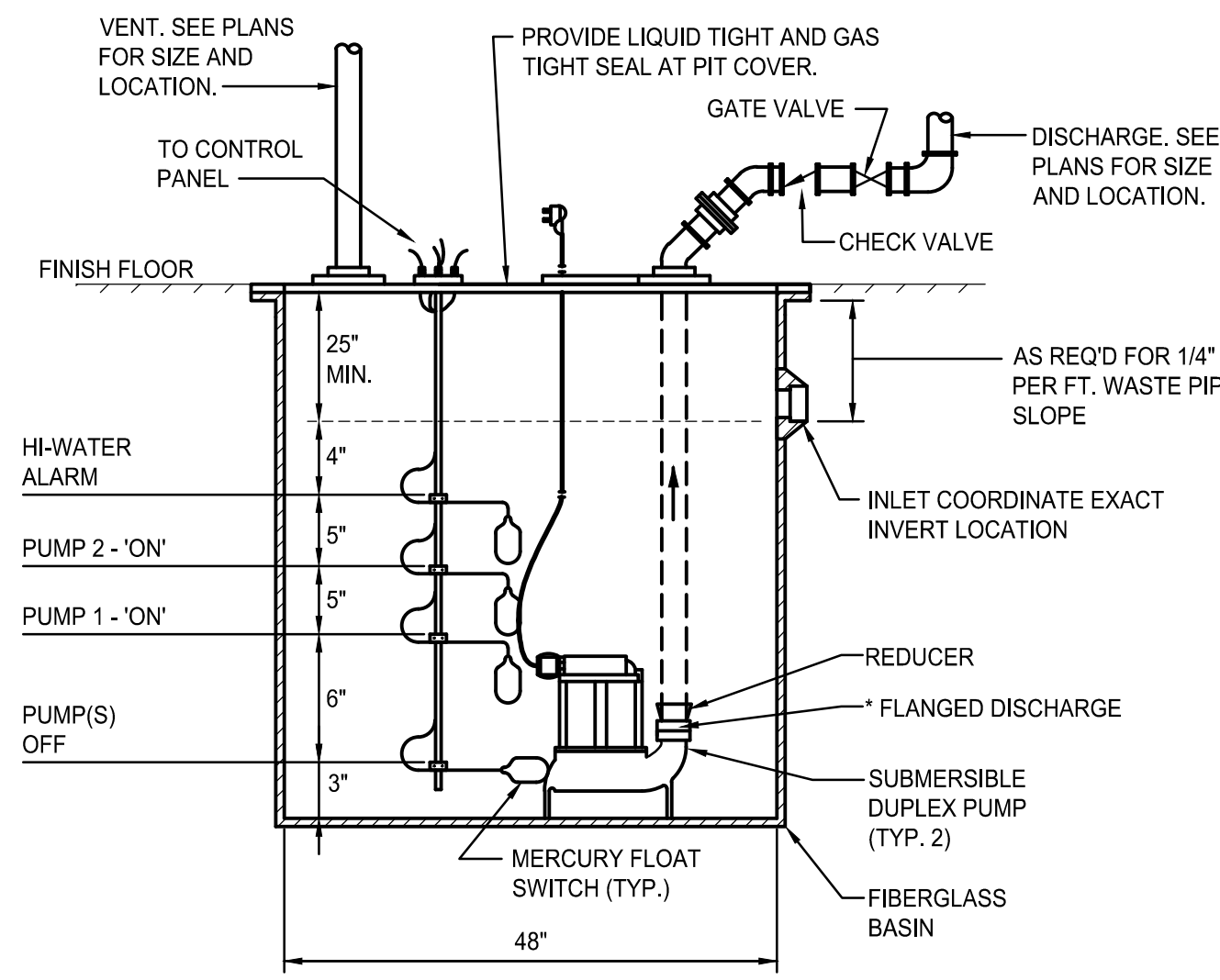
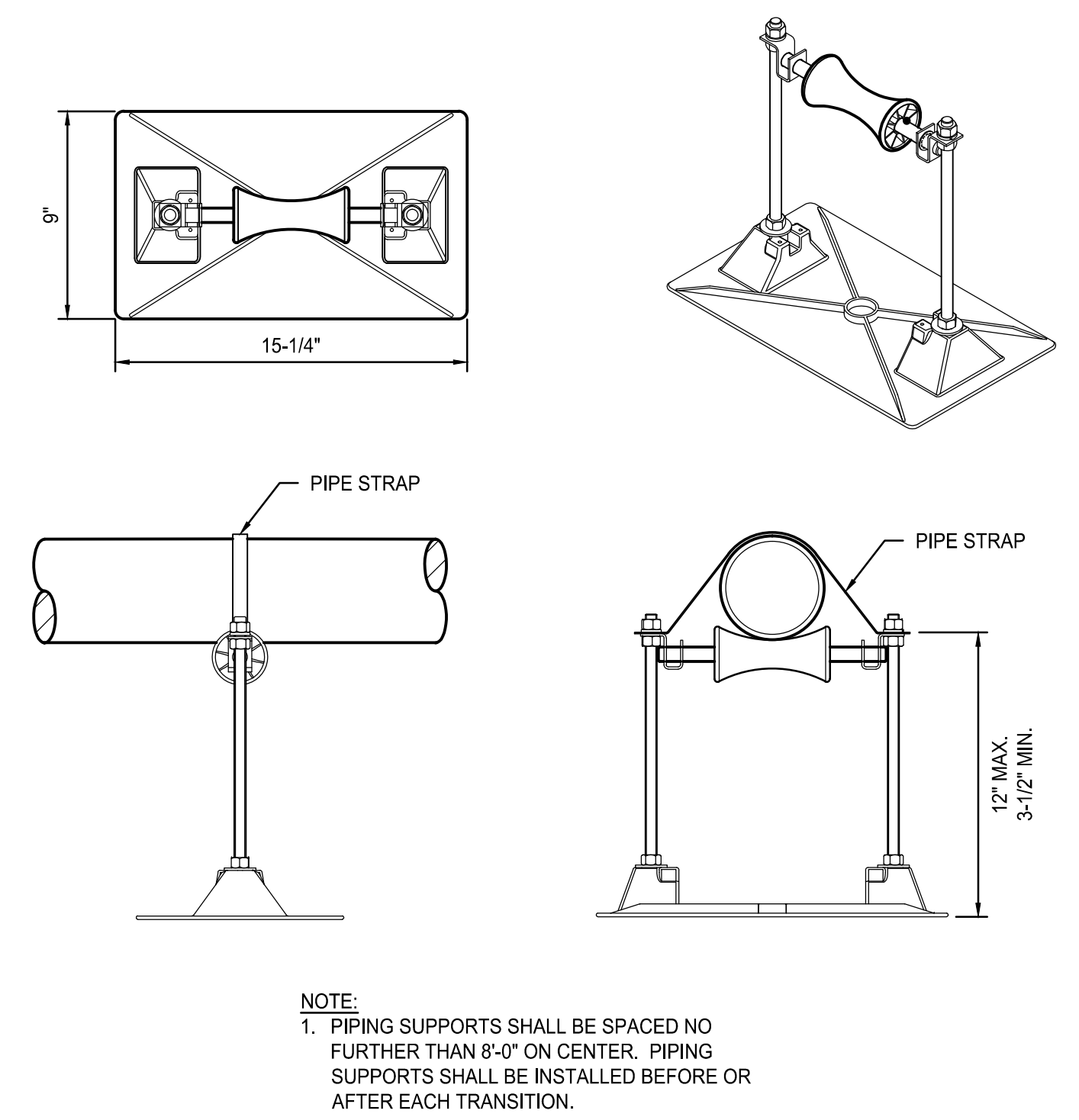
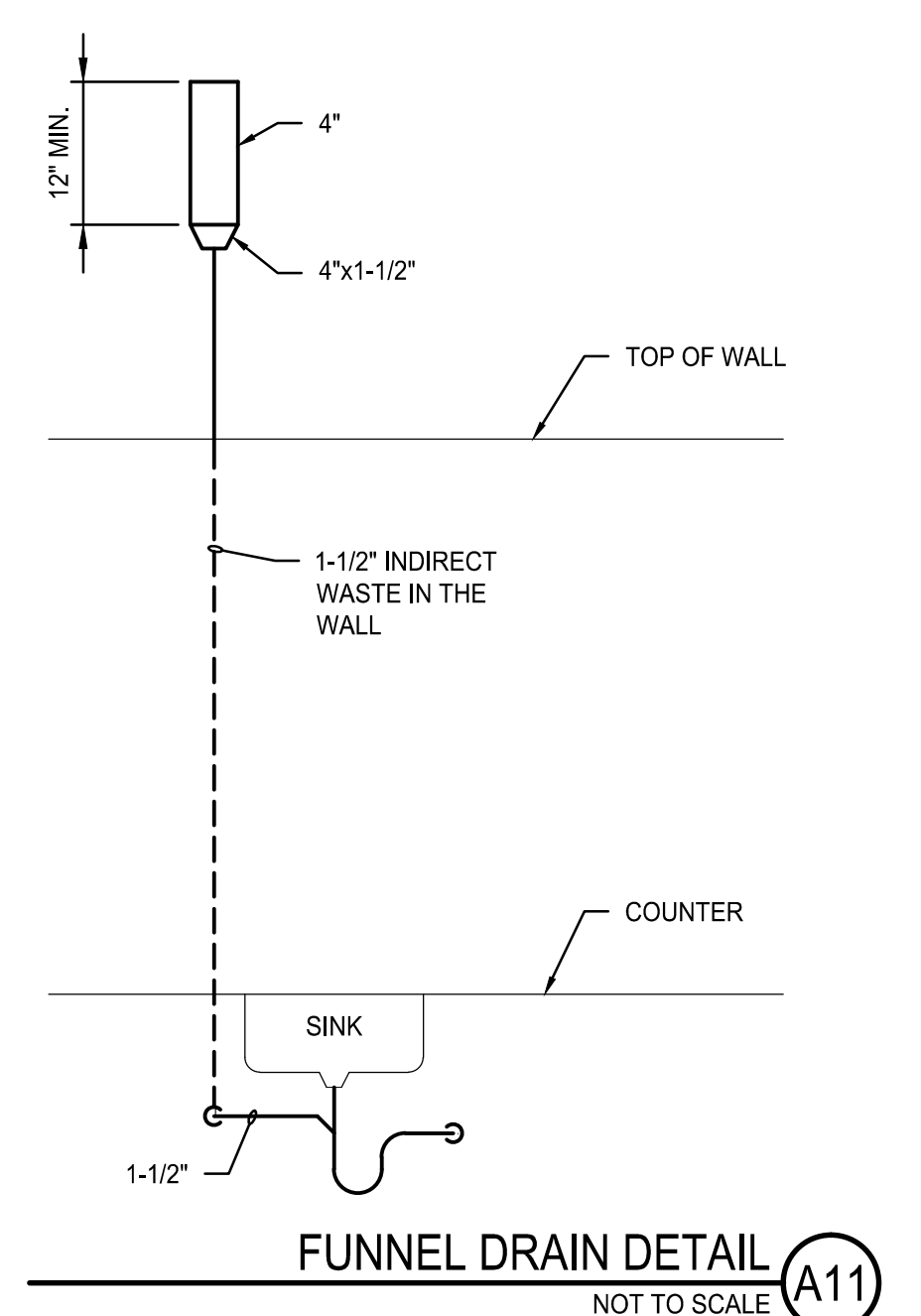
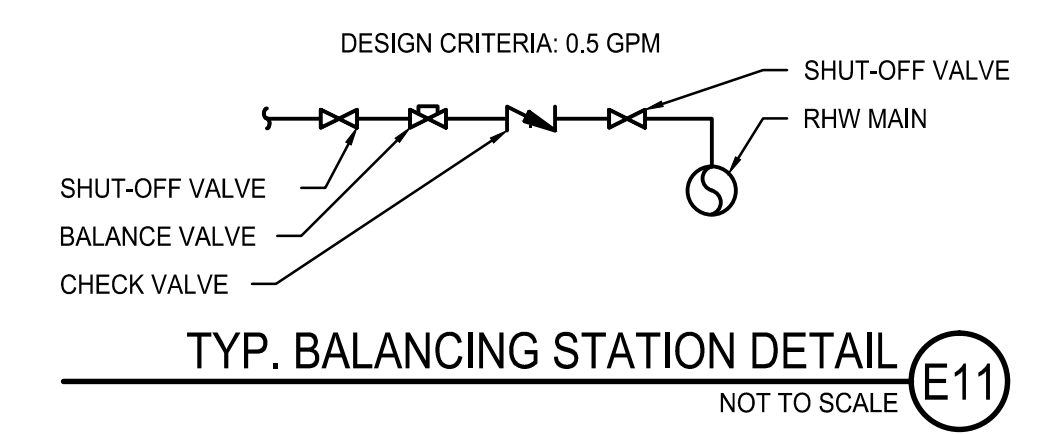
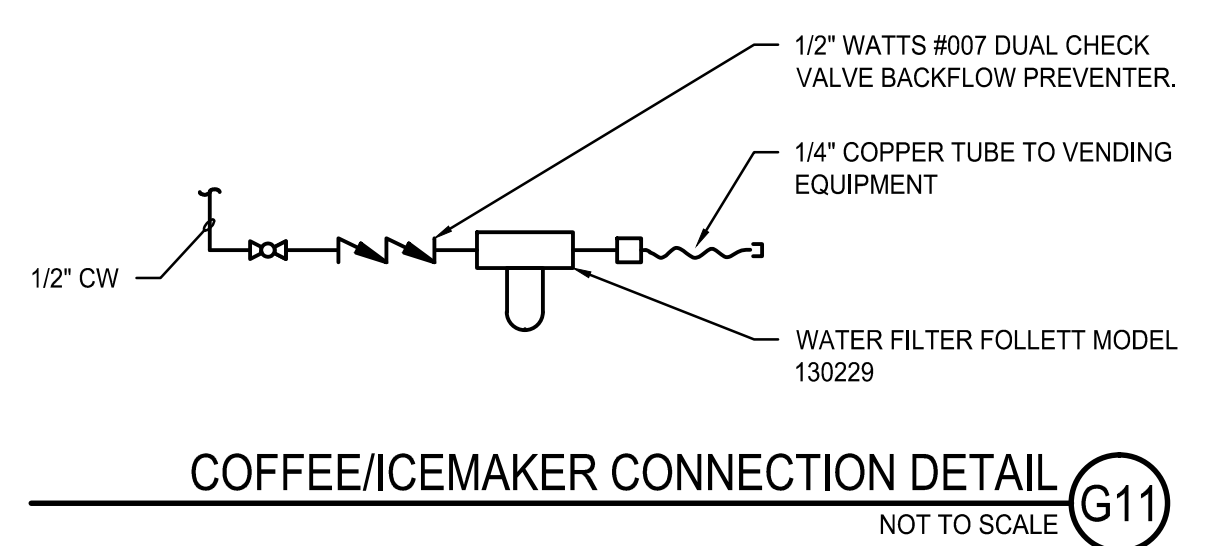


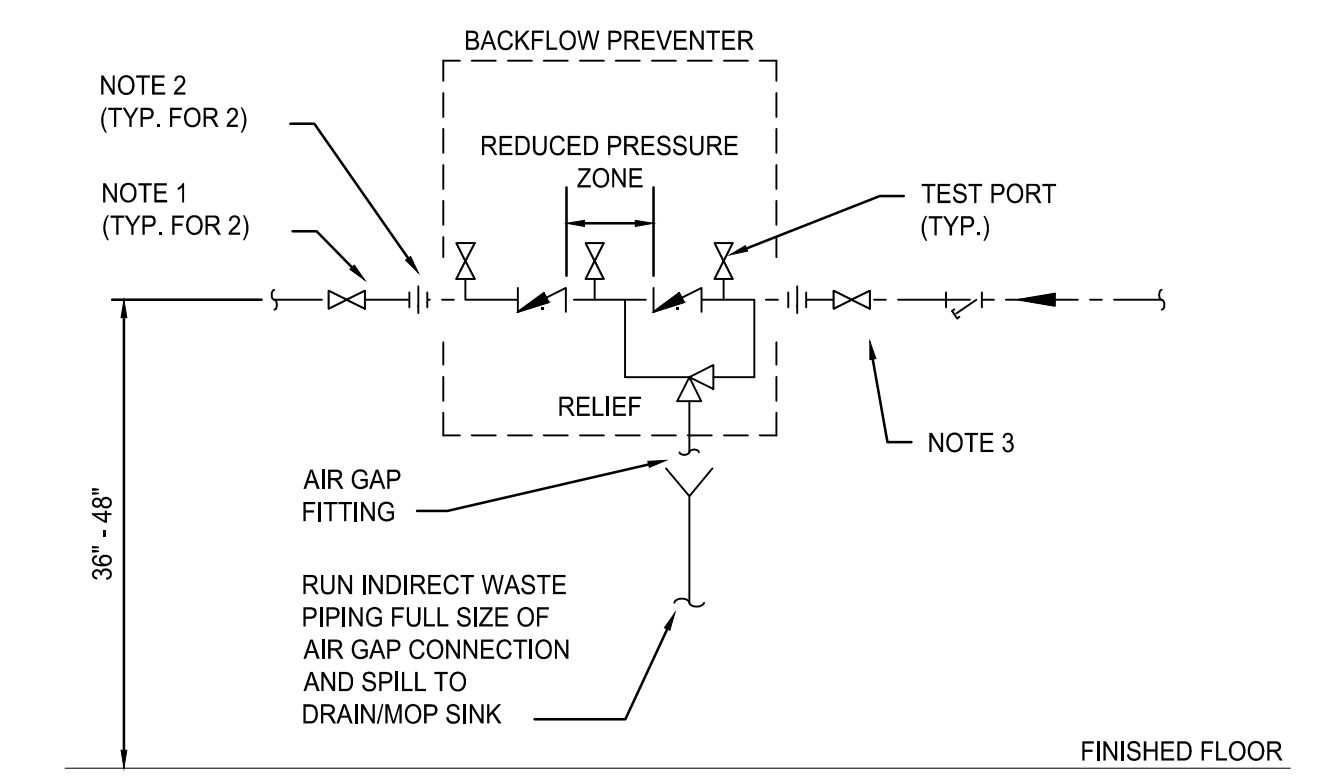
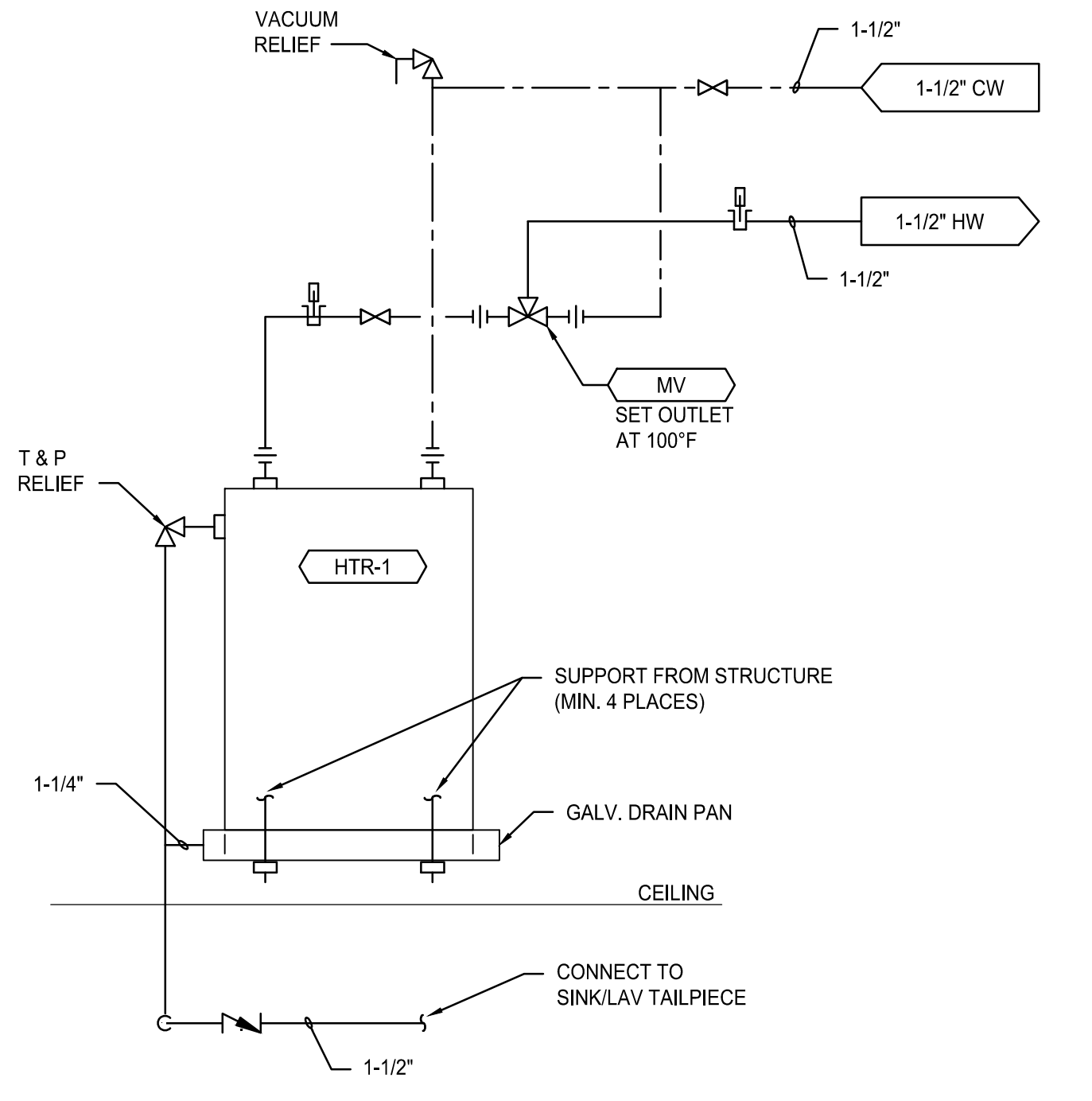
- NOTES:
- FOR MULTIPLE TRAP PRIMER APPLICATION. GROUP PRIMERS TOGETHER WHEREVER POSSIBLE.
  - PROVIDE 3/4"x1/2" THREAD AND SWEAT FITTING WHERE DRAIN BODY REQUIRES.
  - WHERE PIPING DROP IS NOT EXPOSED, PROVIDE ACCESS PANEL.
  - INSTALL VALVE AT A MINIMUM DISTANCE ABOVE THE FLOOR AS REQUIRED BY TRAP PRIMER MANUFACTURER, BUT NO LOWER THAN 1 FOOT AFF FOR EACH 20 FEET OF TRAP PRIMER PIPING.
  - TRAP PRIMER PIPING TO BE INSTALLED BELOW SLAB SLOPED TO DRAIN. PROVIDE A P-TRAP WITH 1/2" PRIMER TAP WHEN FLOOR DRAIN PRIMER PORT IS BURIED WITHIN THE SLAB.



ROOF MOUNTED PIPE SUPPORT DETAIL K5  
NOT TO SCALE

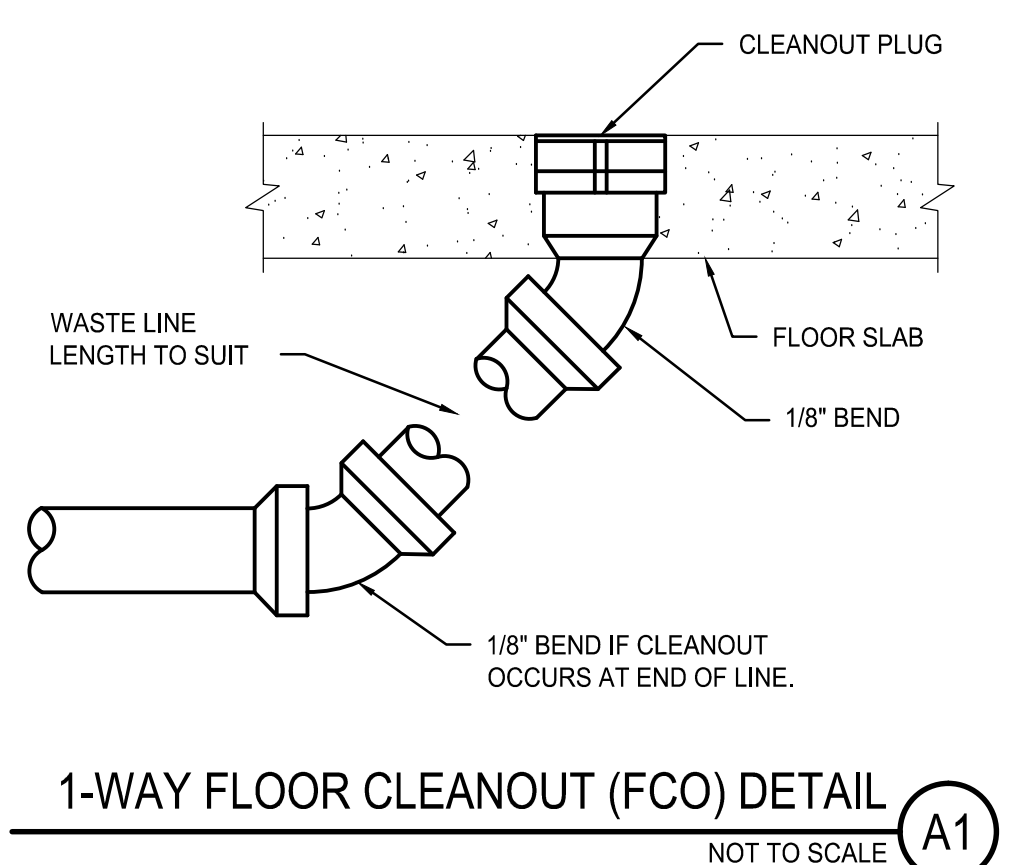
SEWAGE PUMP DETAIL E7  
NOT TO SCALE

PIPE HANGERS DETAIL A6  
NOT TO SCALE



- NOTES:
- SHUT-OFF VALVE PROVIDED WITH DEVICE, BALL OR GATE STYLE.
  - FOR NON-FLANGED DEVICES, DISASSEMBLE AND INSTALL UNIONS WHERE SHOWN.
  - PROVIDE 3/4" BALL VALVE AND MALE HOSE THREAD END FOR STRAINERS 2-1/2" AND LARGER. STRAINER NOT REQUIRED FOR UNITS INSTALLED IMMEDIATELY DOWNSTREAM OF METERS WHICH INCORPORATE STRAINERS.
  - PROVIDE A MINIMUM CLEARANCE OF 12" BEHIND DEVICE. PROVIDE 36" CLEAR FLOOR SPACE IN FRONT OF DEVICE, FOR ACCESS AND TESTING.
  - SUPPORT DEVICE IN ACCORDANCE WITH MANUFACTURER'S WRITTEN INSTRUCTIONS. SUPPORTS SHALL IN NO MANNER INTERFERE WITH THE OPERATION, TESTING AND SERVICING OF THE DEVICE, INCLUDING THE RELIEF VALVE AND DRAIN. AT A MINIMUM, SUPPORTS SHALL CONSIST OF:  
(2) FLOOR SUPPORTED PIPE STANDS OR WALL MOUNT STRUT WITH ANGLE BRACES FOR DEVICES 2-1/2" AND LARGER.  
(2) SPLIT RING TYPE, WALL MOUNT PIPE CLAMP ASSEMBLIES FOR DEVICES 2" AND SMALLER.

RPZ BACKFLOW PREVENTER DETAIL E1  
NOT TO SCALE

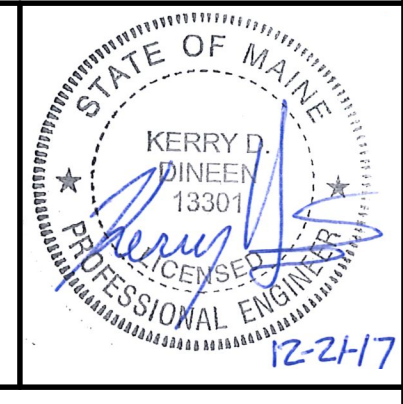


1-WAY FLOOR CLEANOUT (FCO) DETAIL A1  
NOT TO SCALE

NOTE:  
1. SEE SHEET PL001 FOR LEGEND AND ABBREVIATIONS.

REV	DESCRIPTION	DATE
0	ISSUED FOR CONSTRUCTION	12-21-17

ISSUED FOR CONSTRUCTION  
12-21-17  
CURRENT ISSUE STATUS:



SMRT Architects and Engineers  
144 Fore Street  
Portland, Maine 04104  
1.877.700.7678  
www.smrtinc.com

MAINE MEDICAL CENTER  
M.M.C. HUTCHINS DRIVE  
RENOVATION  
102 HUTCHINS DRIVE, PORTLAND, ME  
PLUMBING DETAILS

SHEET TITLE:

SCALE: AS NOTED

PROJECT MANAGER: RSC PROJECT NO: 17123

AVE OF RECORD: KDD

JOB CAPTAIN: SDL

DRAWN BY: CWF

SMRT FILE: PL501-17123 SHEET No. 17123

PL501