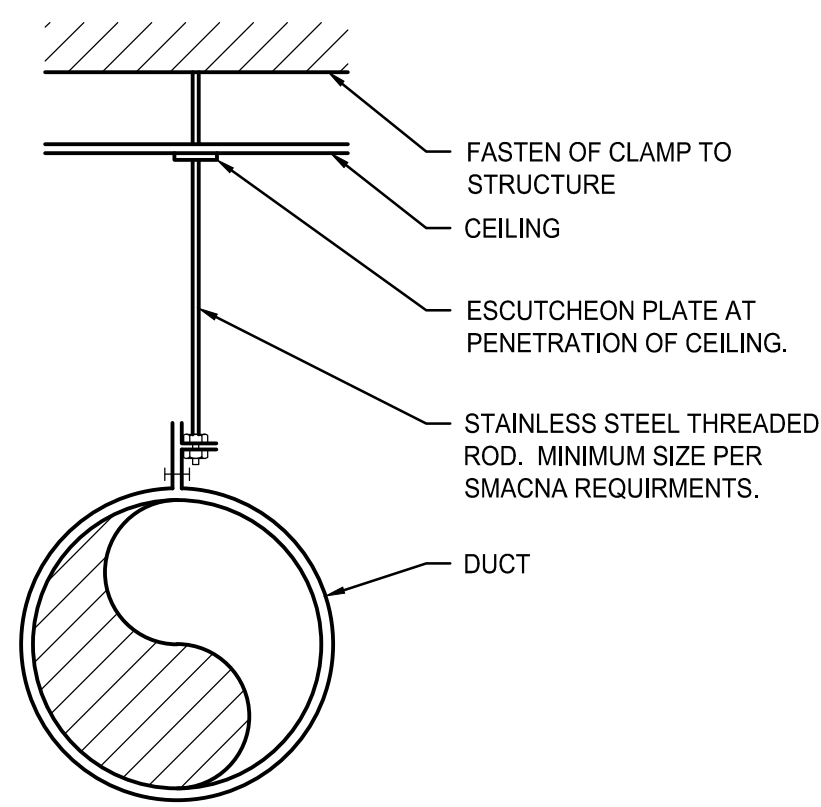
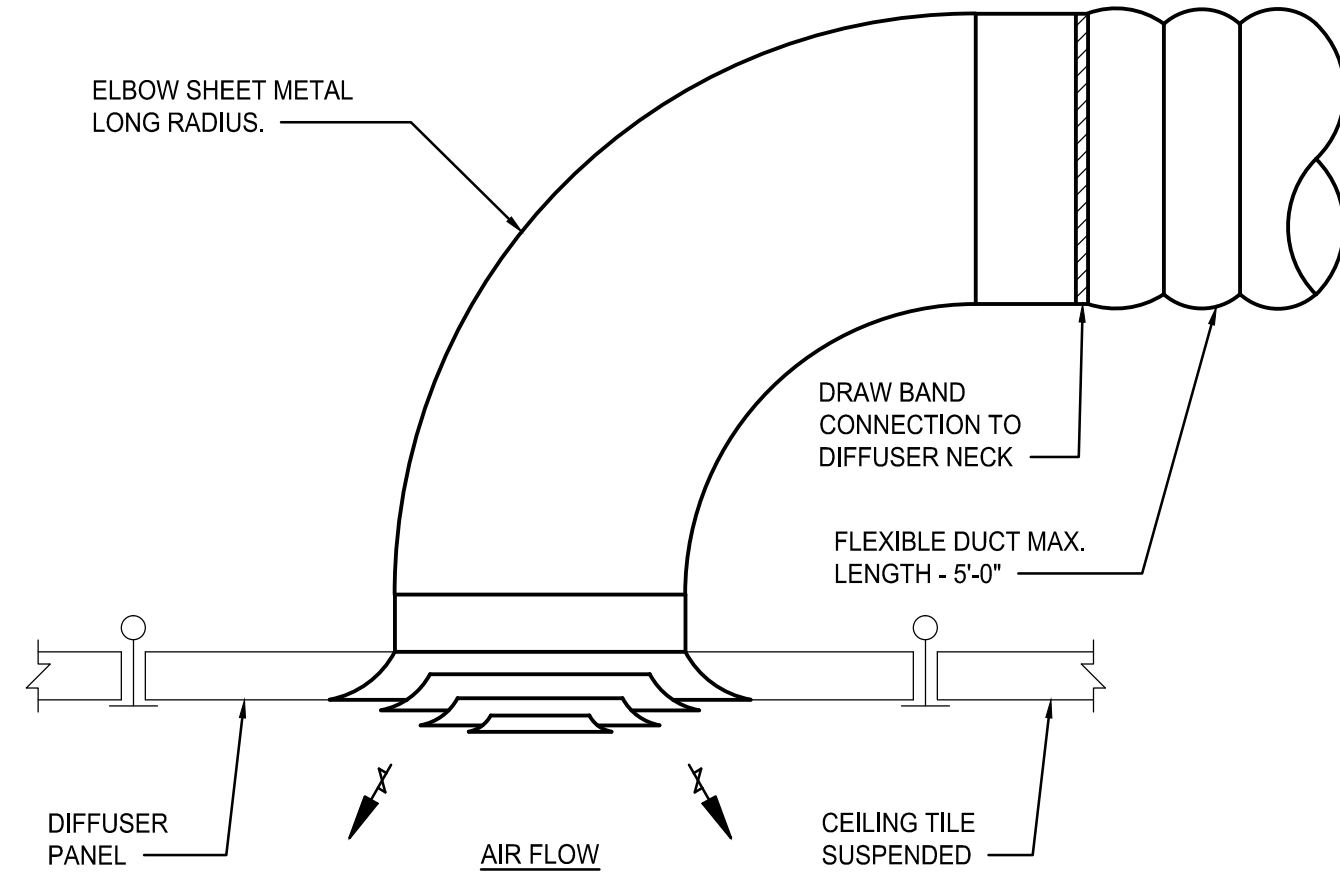


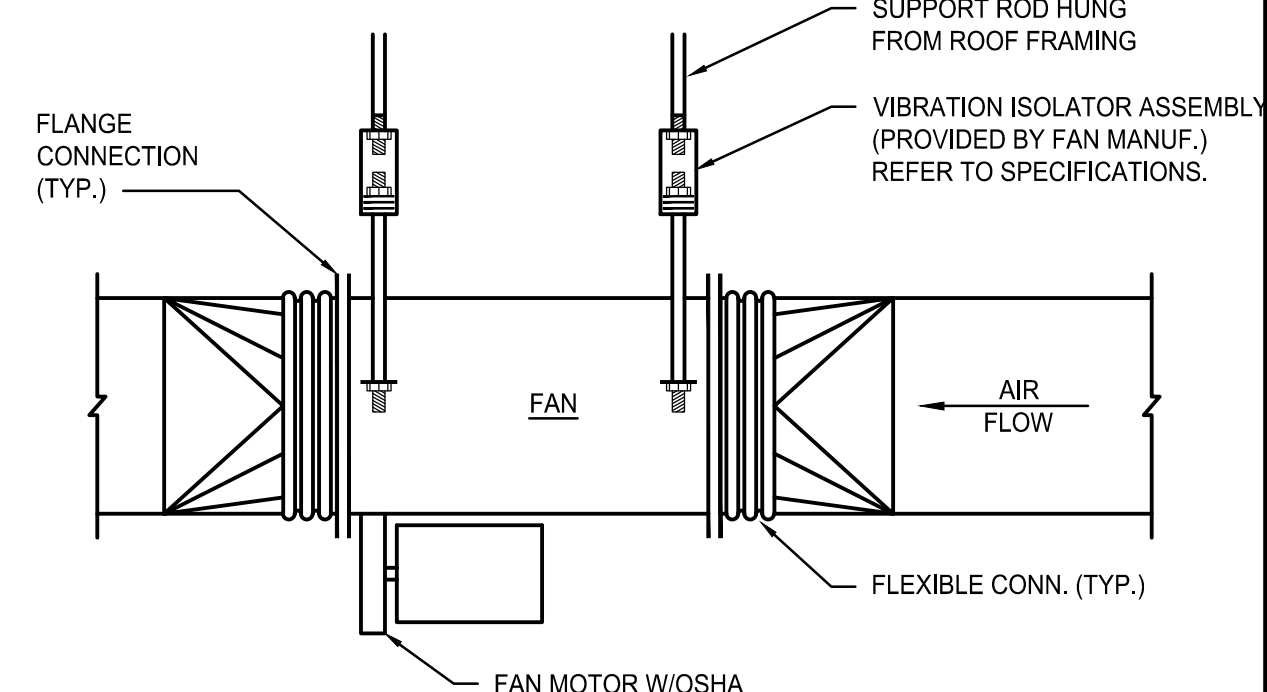
RETURN AIR BOOT DETAIL (L13)
NOT TO SCALE



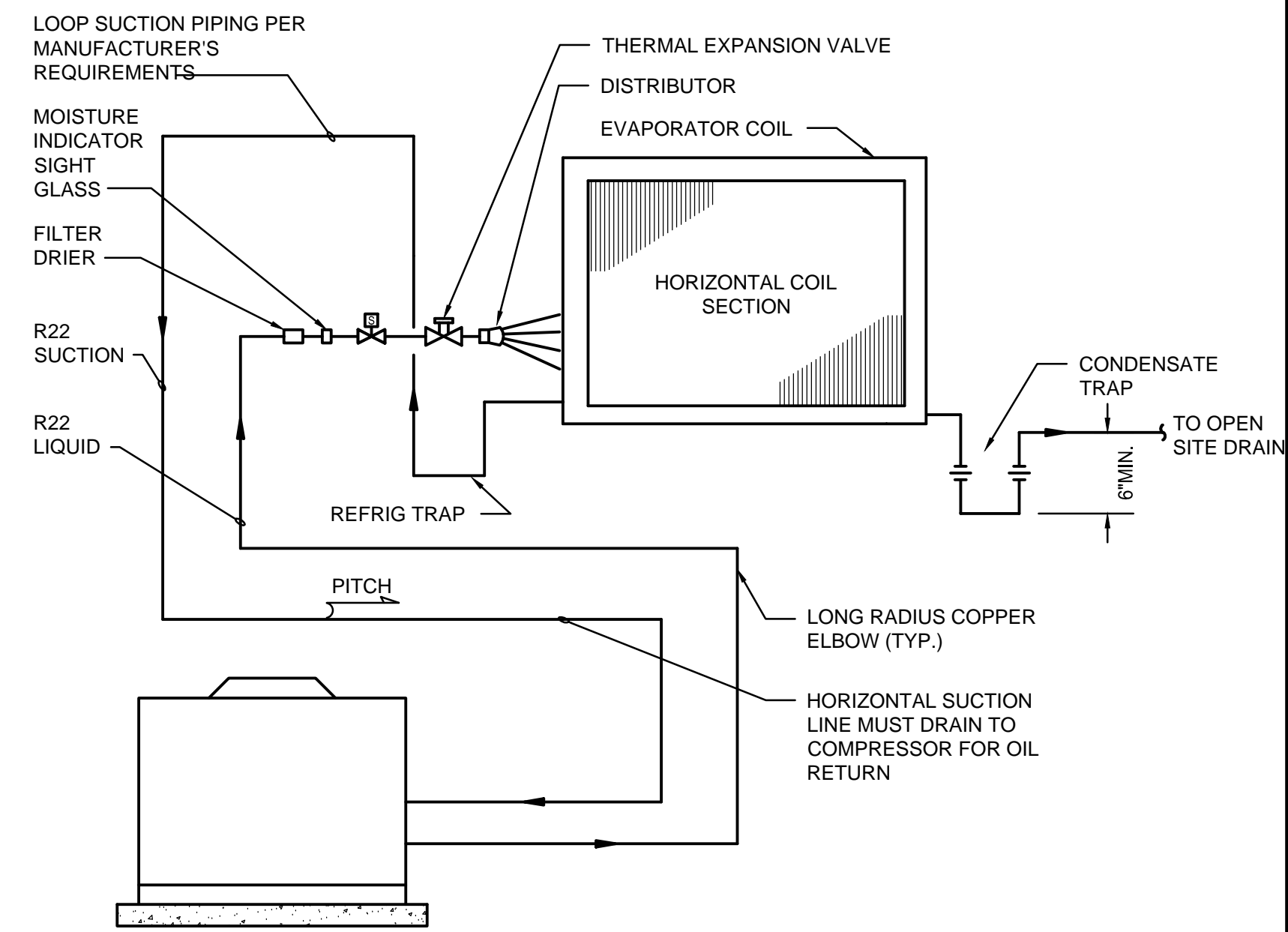
DUCT HANGER DETAIL (L10)
NOT TO SCALE



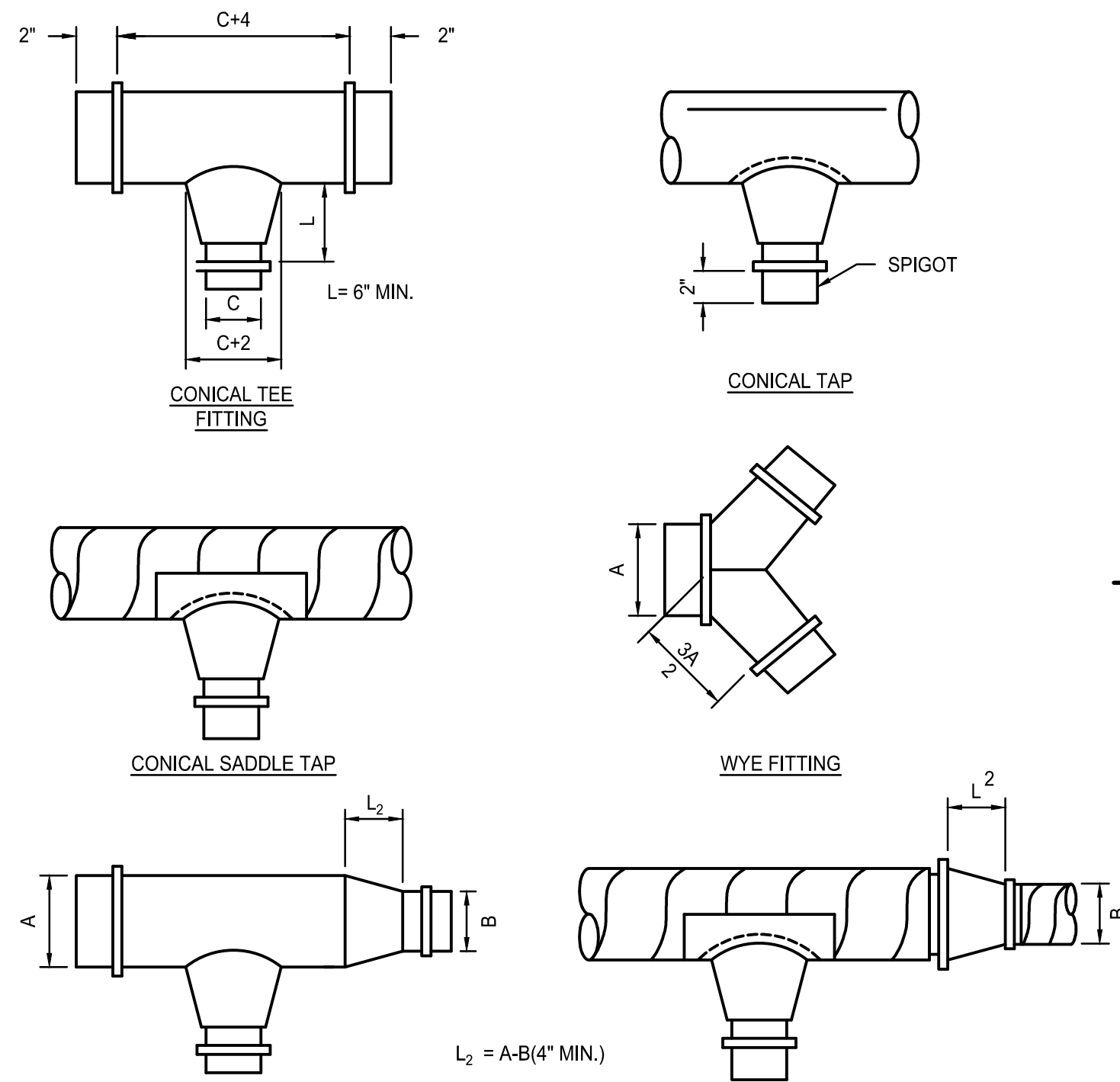
DIFFUSER CONNECTION DETAIL (L6)
NOT TO SCALE



INLINE FAN SUPPORT DETAIL (N1)
NOT TO SCALE

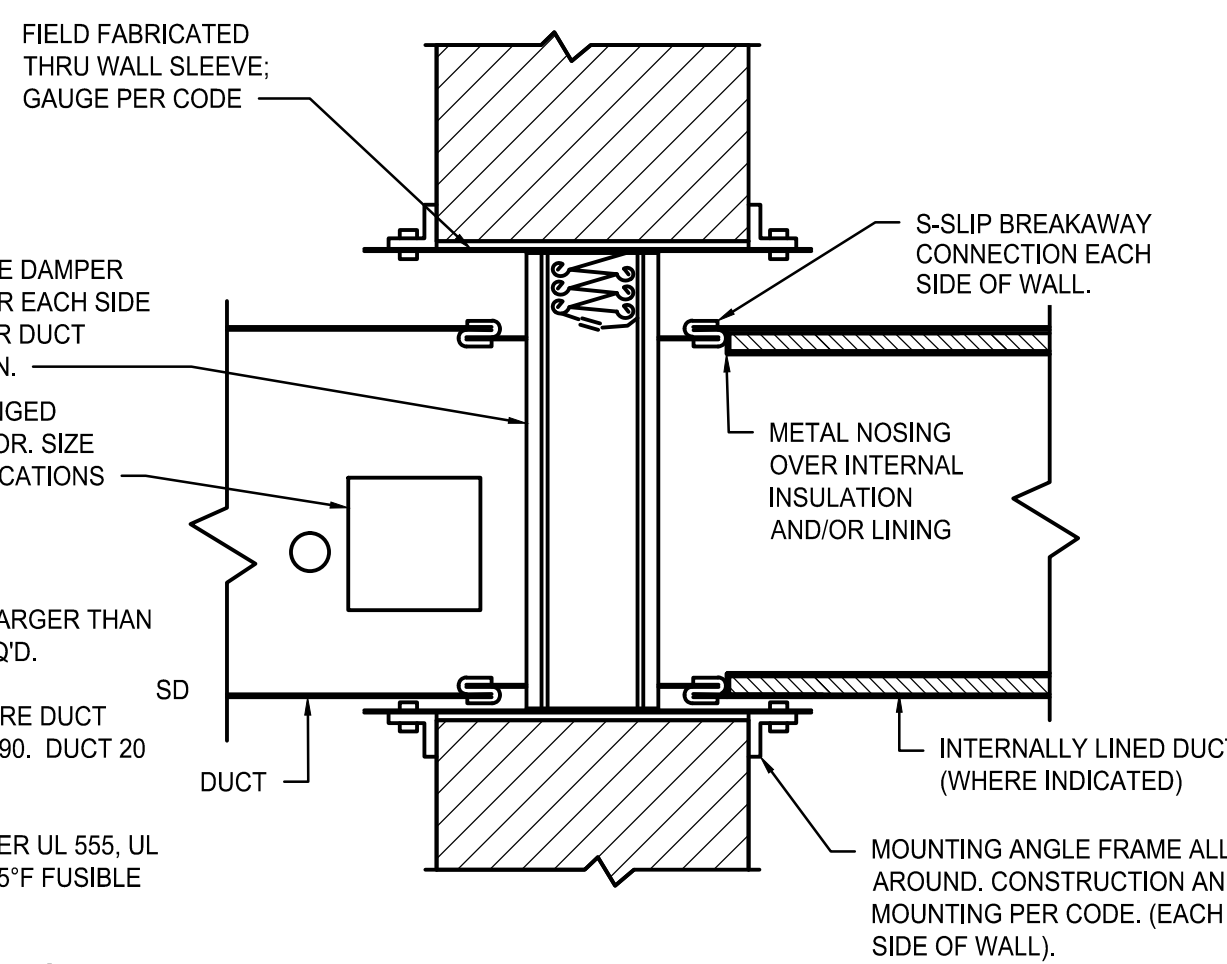


SPLIT SYSTEM PIPING SCHEMATIC (H1)
NOT TO SCALE

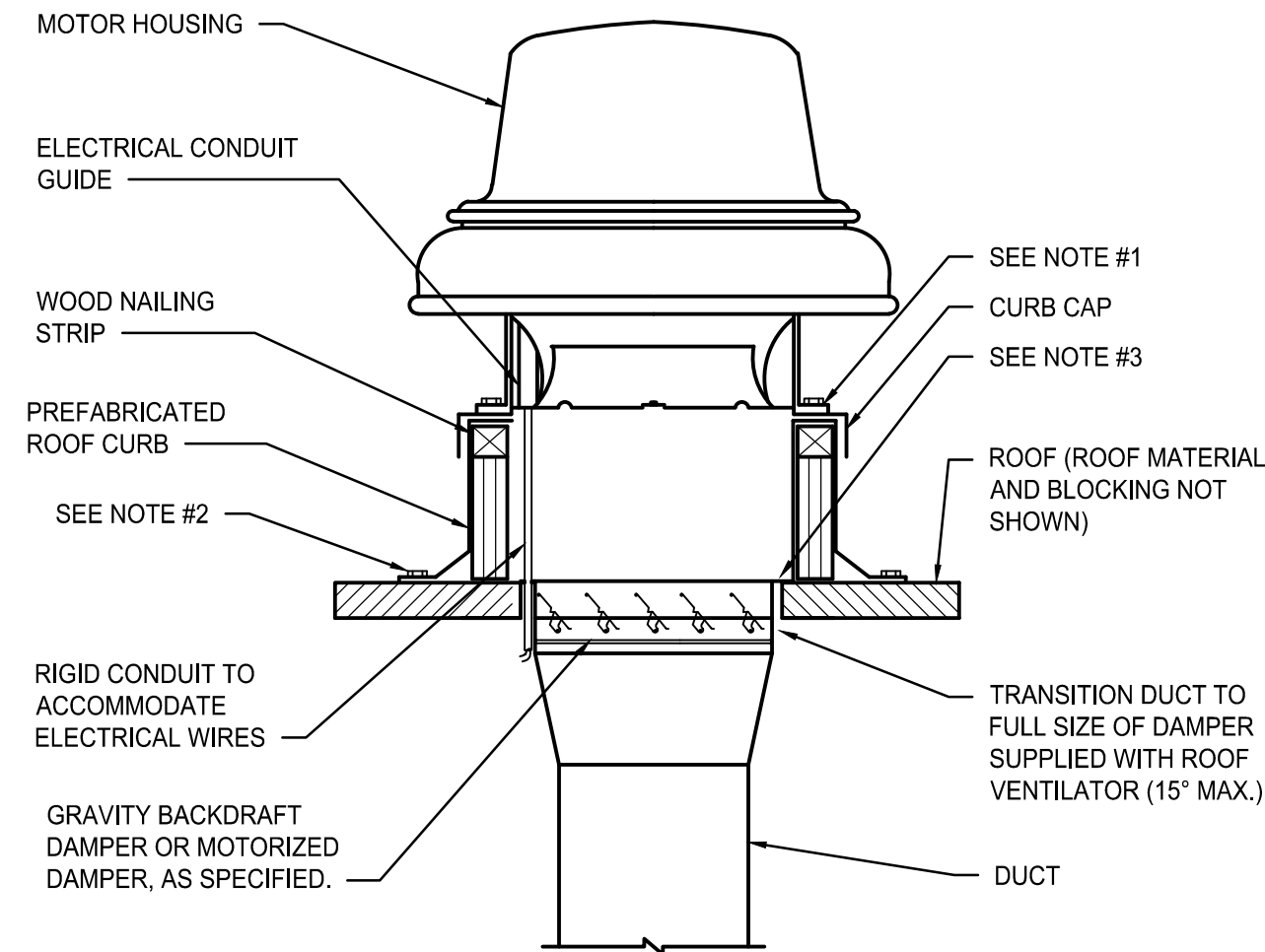


AIR DEVICE CONNECTION DETAIL (G12)
NOT TO SCALE

- NOTES:
1. MAKE OPENING 1/8" PER LINEAL FOOT LARGER THAN DAMPER DIMENSIONS WITH 1/4" MIN REQ'D.
 2. SLEEVE GAUGE > GAUGE OF DUCT WHERE DUCT CONSTRUCTION AND JOINTS PER NFPA 90. DUCT 20 GA. MIN.
 3. DAMPER CONSTRUCTED AND TESTED PER UL 555, UL LABELED, 1-1/2 HOUR FIRE RATING W/165°F FUSIBLE LINK.
 4. SEAL BETWEEN WALL AND SLEEVE W/APPROVED FIRE STOP MATERIAL.
 5. FIRE DAMPER SHALL BE CONFIGURED SUCH THAT UNACTIVATED FIRE DAMPER CURTAIN SHALL BE OUTSIDE OF THE AIRSTREAM.
 6. DUCT DETECTOR BY DIV 16 (SMOKE DAMPERS ONLY).

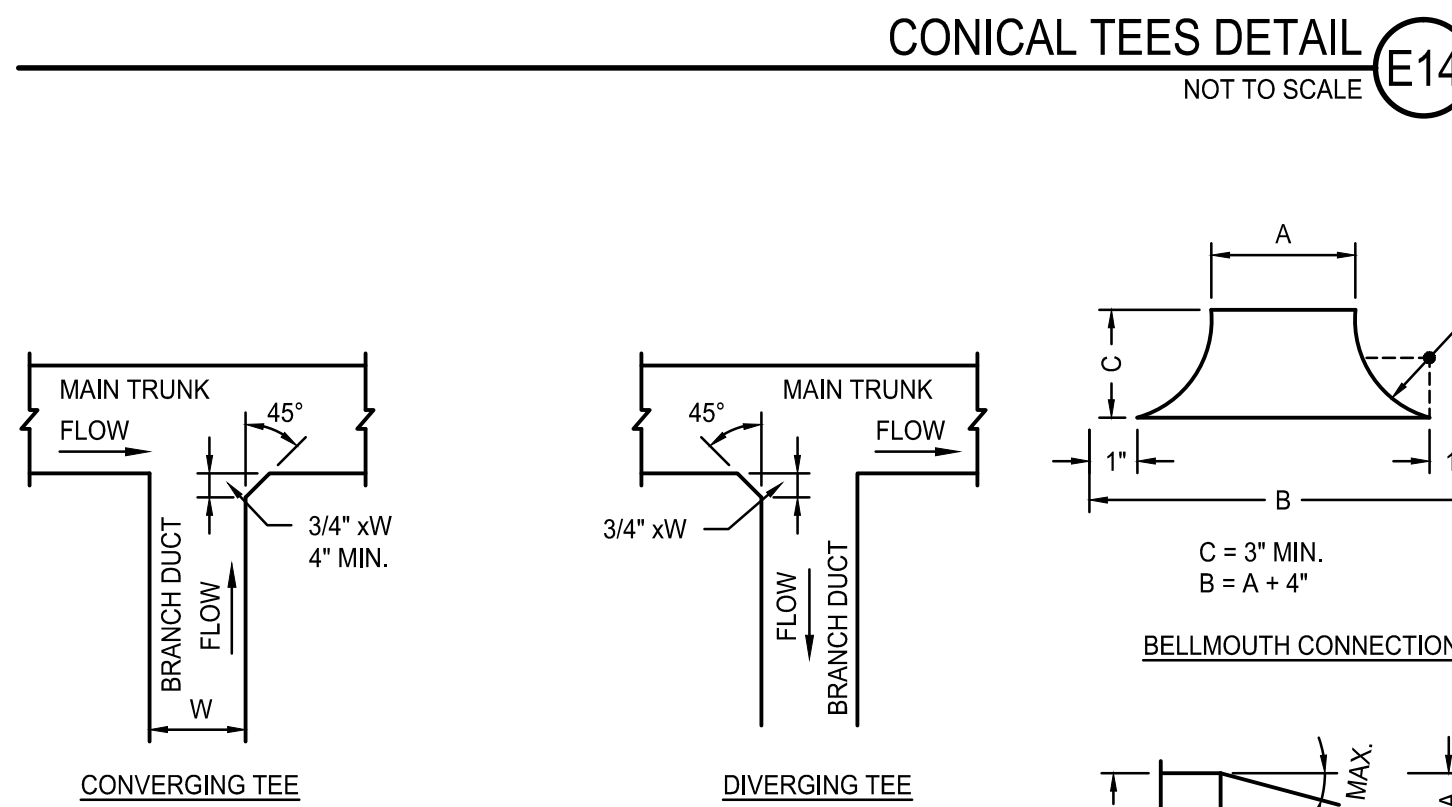


FIRE/SMOKE DAMPER DETAILS (G6)
NOT TO SCALE

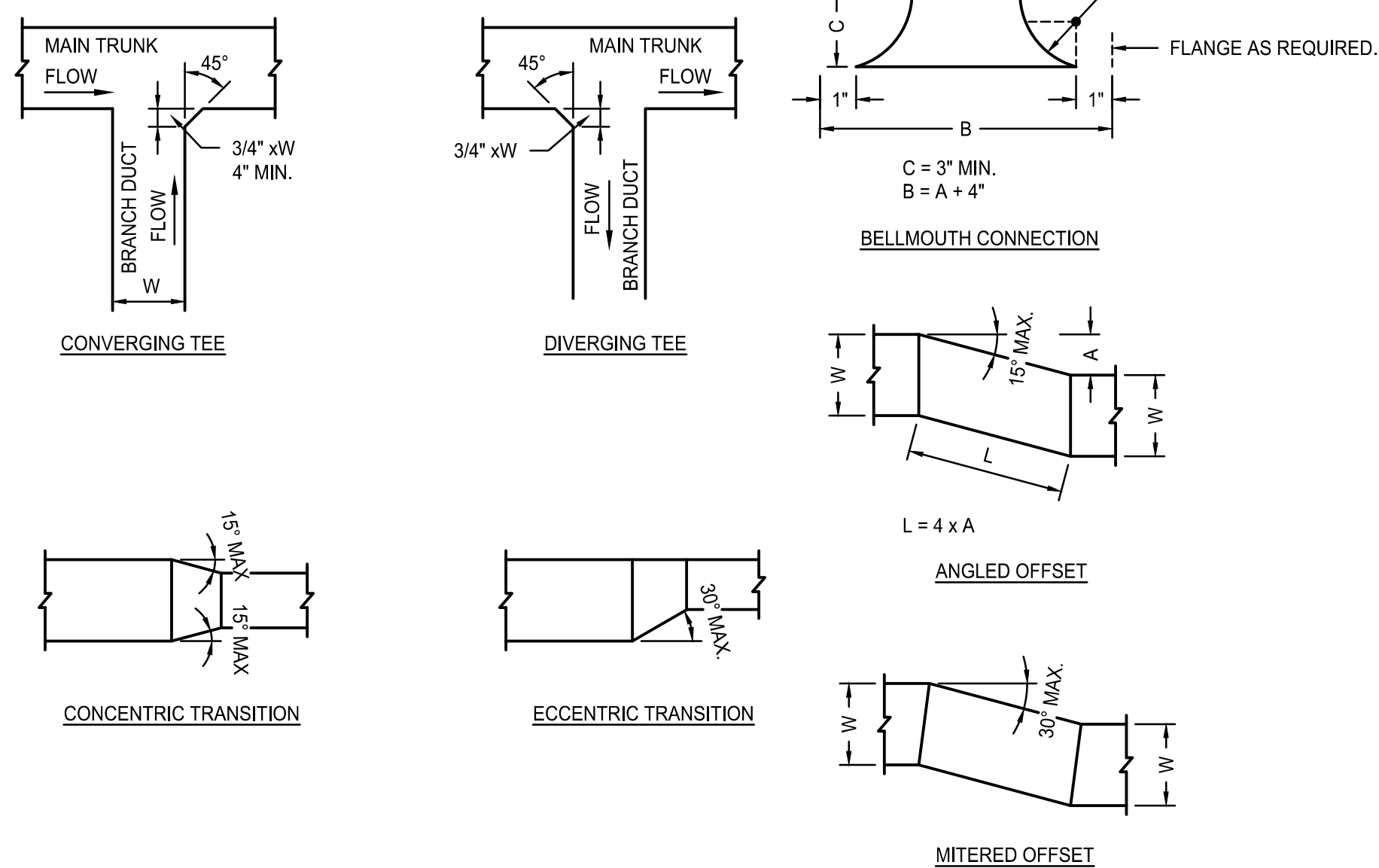


- NOTES:
1. SECURE CURB CAP TO WOOD NAILING STRIP WITH 3/8" CADDIUM PLATED LAG BOLTS NOT OVER 12" ON CENTER.
 2. SECURE ROOF CURB, DUCTWORK AND DAMPER TO ROOF BLOCKING.
 3. SIZE OF DUCT THROUGH ROOF SHALL NOT BE LARGER THAN CURB SUPPLIED WITH ROOF VENTILATOR.
 4. RUN ELECTRIC LINES THROUGH CLEARANCE HOLE PROVIDED IN GRAVITY DAMPER, THEN THROUGH VENTILATOR ELECTRICAL CONDUIT GUIDE.

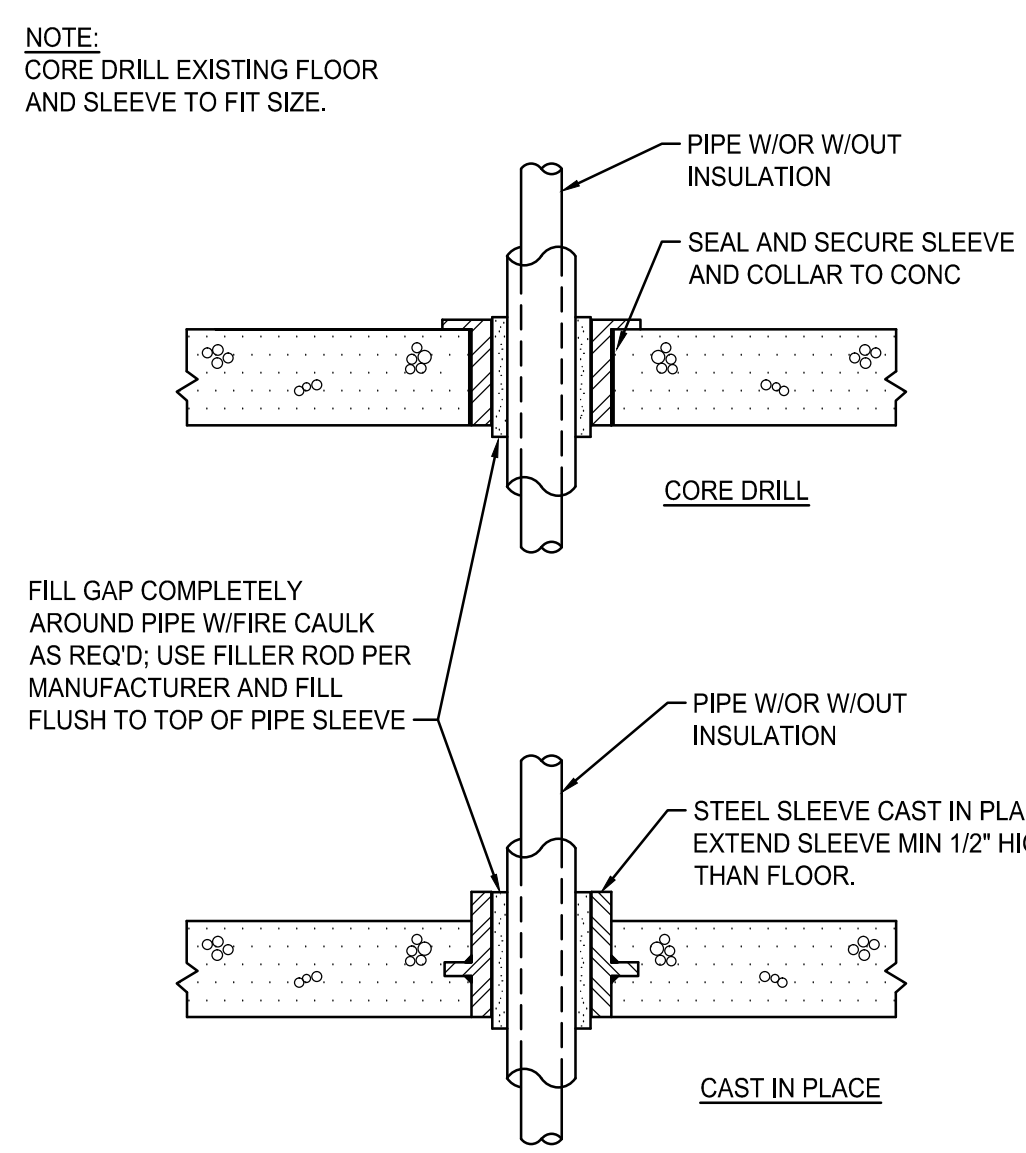
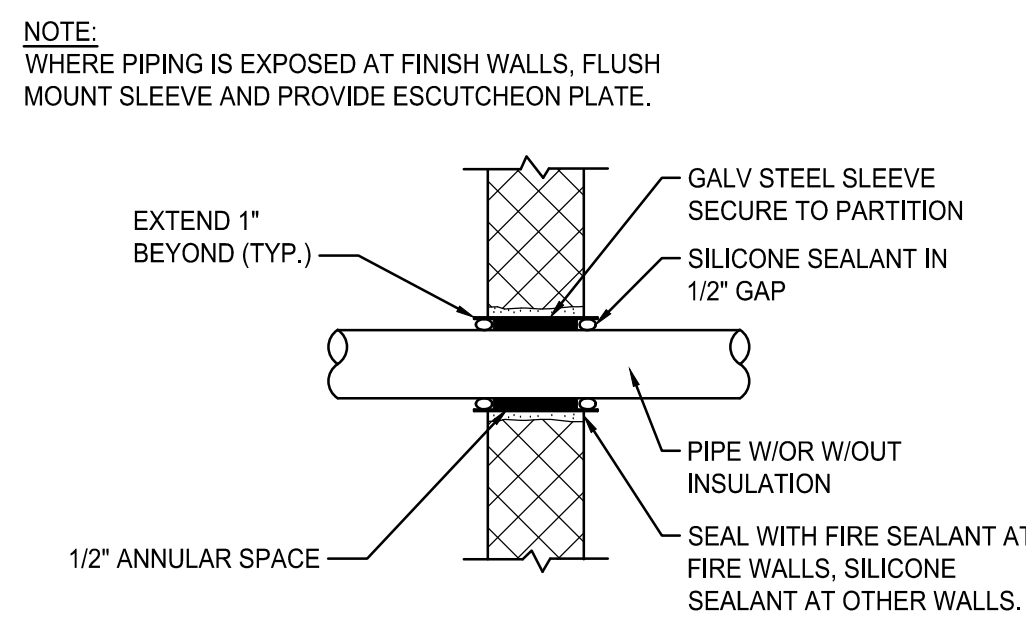
ROOF VENTILATOR DETAIL (F1)
NOT TO SCALE



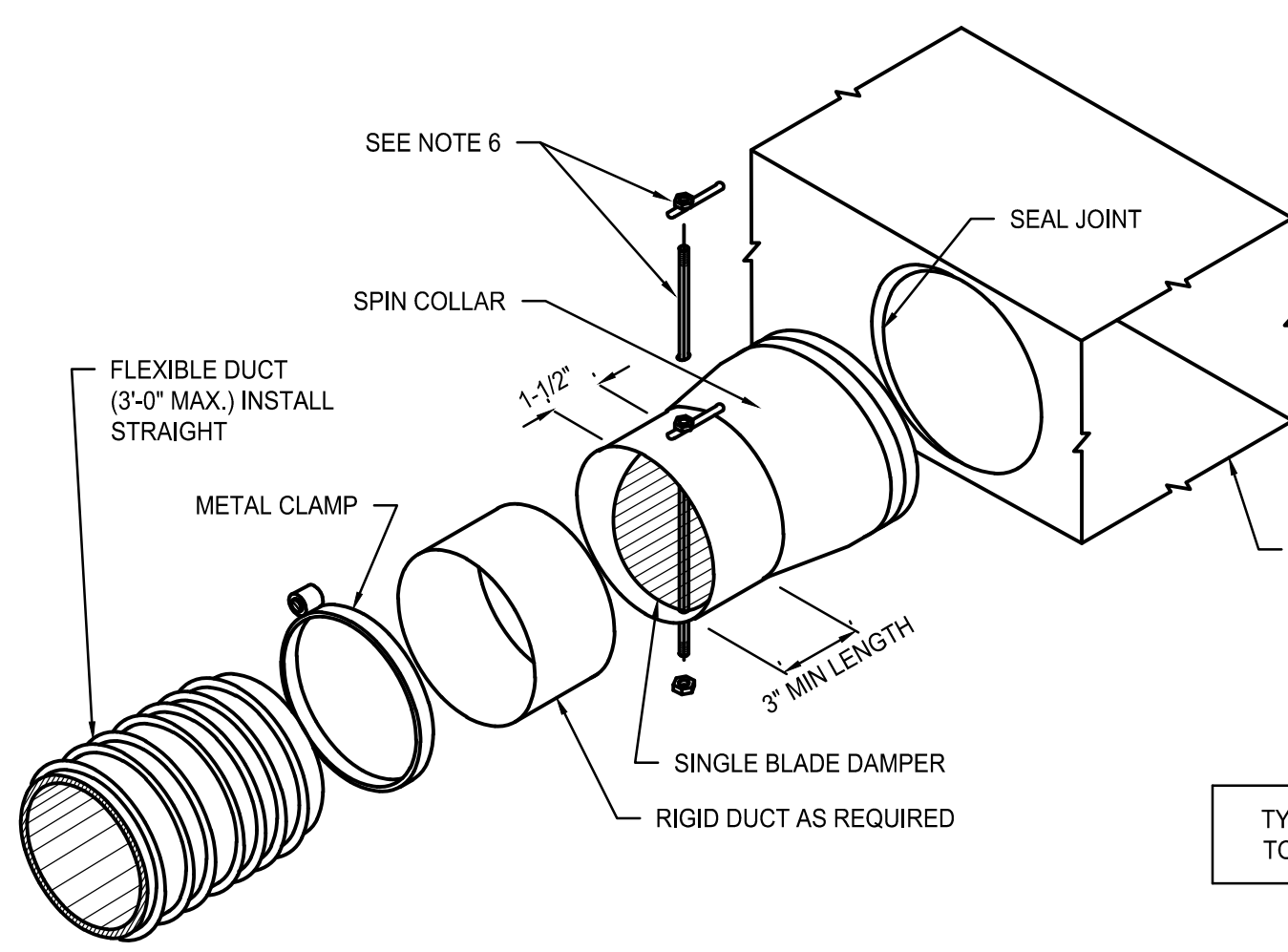
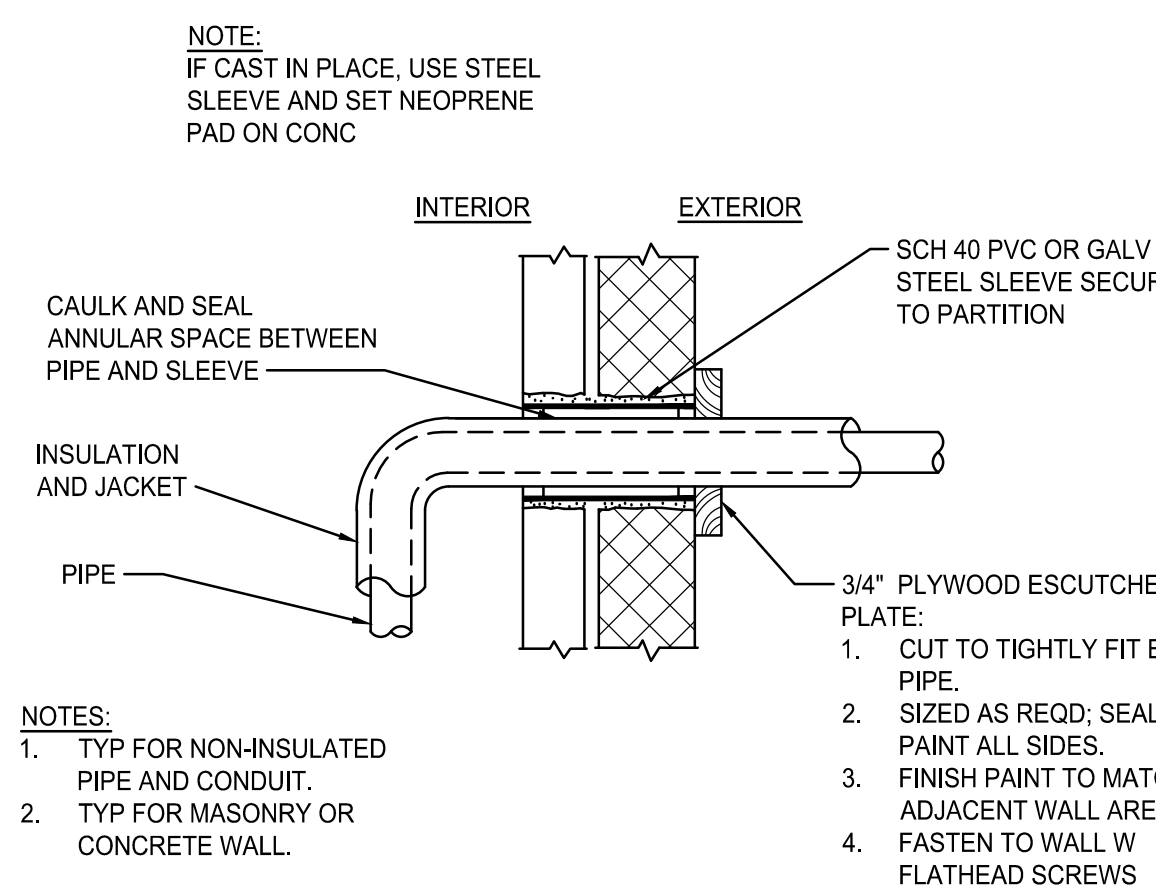
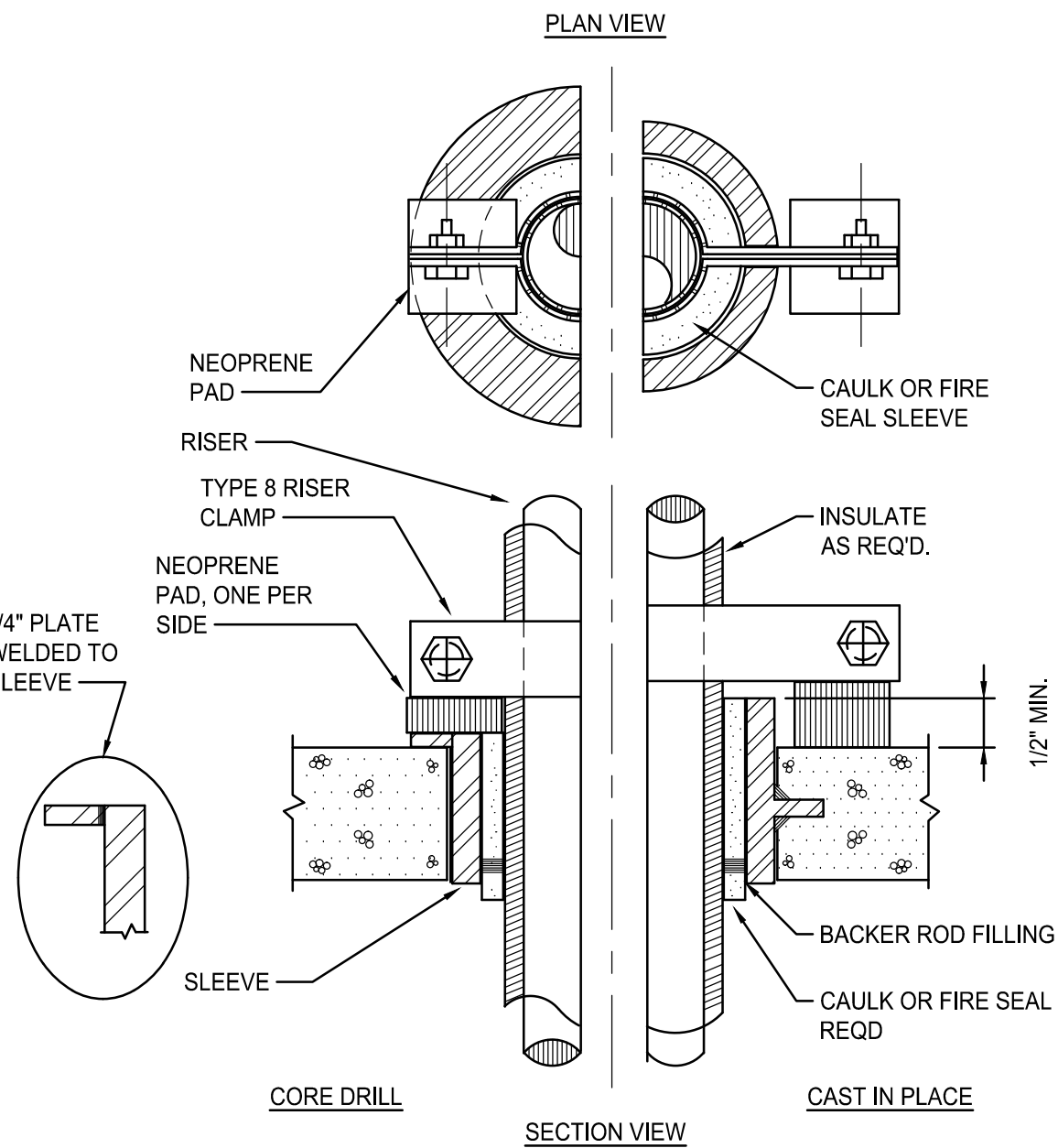
CONICAL TEES DETAIL (E14)
NOT TO SCALE



DUCT TRANSITION DETAILS (A14)
NOT TO SCALE



PIPE PENETRATION DETAILS (A6)
NOT TO SCALE



- NOTES:
1. SUPPORT IN ACCORDANCE W/ SMACNA GUIDELINES.
 2. BAND FLEX TO COLLAR 1/2" MINIMUM FROM OUTBOARD END OF COLLAR.
 3. INSTALL SPIN COLLAR DAMPER IN OPEN POSITION; FINAL ADJUSTMENT BY TESTING AND BALANCING CONTRACTOR.
 4. POP RIVET OR SHEET METAL SCREWS, MINIMUM 3 EA AT 120" INTERVALS, CONNECTING STOVEPIPE TO COLLAR. ENSURE RIVETS OR SCREWS DO NOT INTERFERE W/DAMPER.
 5. SEAL JOINTS TO PREVENT LEAKAGE USE SPECIFIED SEALANTS.
 6. INSTALL LOCKING QUADRANT AND HANDLE ON BOTTOM OF DUCT FOR EASY SERVICE (SHOWN ON TOP FOR EASE OF ILLUSTRATION ONLY).

SPIN COLLAR DUCT CONNECTOR WITH DAMPER DETAIL (A1)
NOT TO SCALE

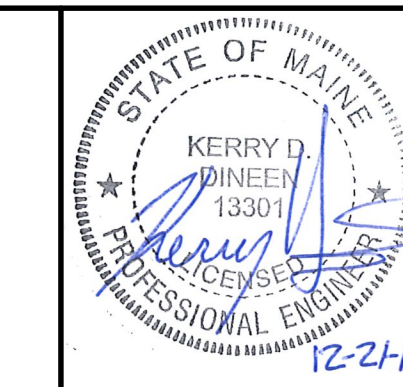
NOTE:

1. SEE SHEET M-001 FOR LEGEND AND ABBREVIATIONS.

REV	DESCRIPTION	DATE
0	ISSUED FOR CONSTRUCTION	12-21-17

ISSUED FOR CONSTRUCTION
12-21-17

CURRENT ISSUE STATUS:



SMRT Architects and Engineers
144 Fore Street
Portland, Maine 04104
1.877.700.7678
www.smrtinc.com

MAINE MEDICAL CENTER
M.M.C. HUTCHINS DRIVE
RENOVATION
102 HUTCHINS DRIVE, PORTLAND, ME
MECHANICAL DETAILS

SHEET TITLE:

SCALE: AS NOTED

PROJECT MANAGER: RSC PROJECT NO: 17123

AVE OF RECORD: KDD

JOB CAPTAIN: SDL

DRAWN BY: CWF

SMRT FILE: M-501-17123 SHEET No.

M-501