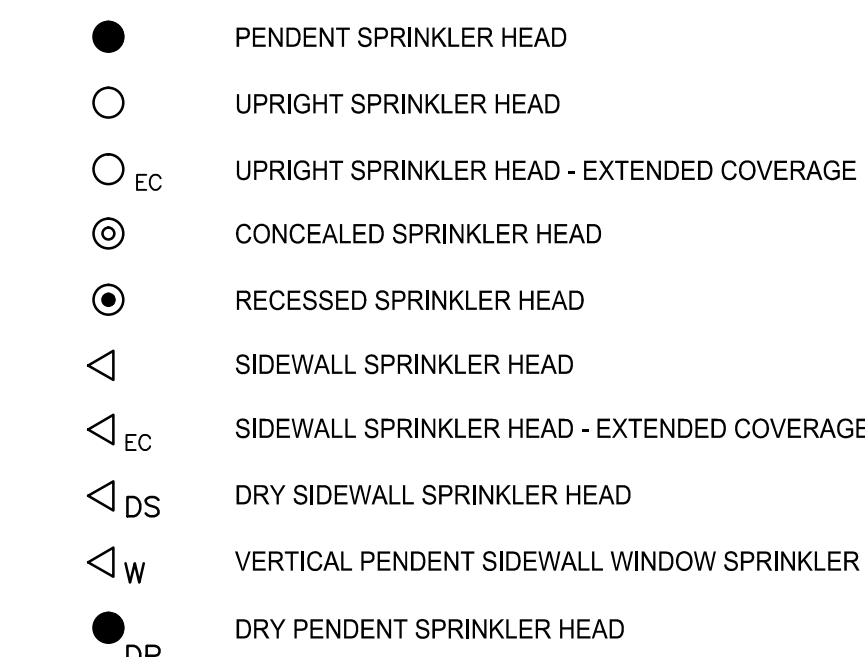
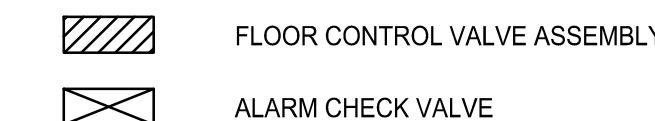
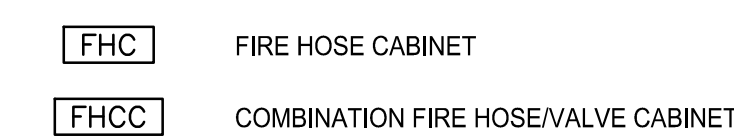
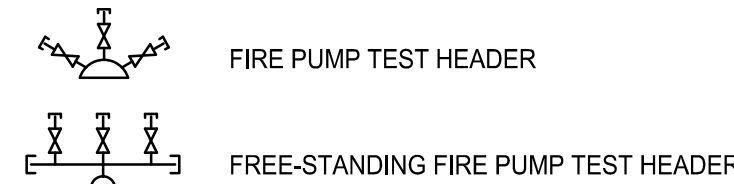
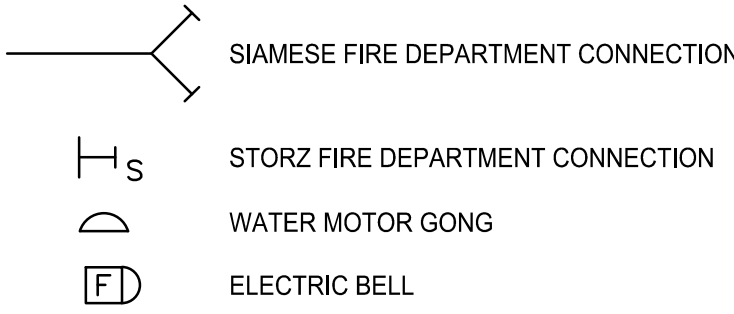
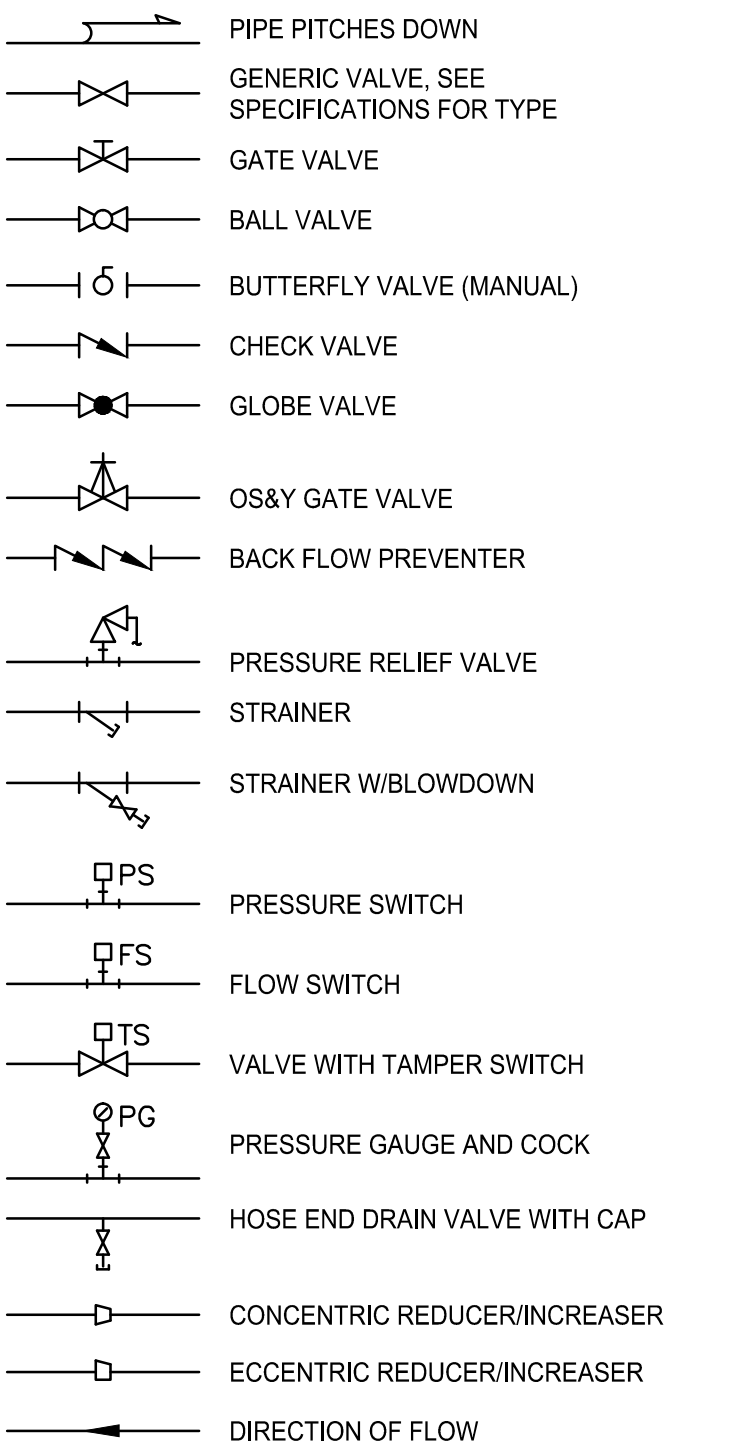


	UNION
	FLANGE
	GROOVED COUPLING
	PIPE ANCHOR
	PIPE GUIDE OR SLEEVES
	PIPE ELBOW TURNED DOWN
	PIPE ELBOW TURNED UP
	PIPING TEE-DOWN
	PIPING TEE-UP
	PIPE RISER
	CLEAN OUT



AD	ACCESS DOOR	MIN	MINIMUM
AHJ	AUTHORITY HAVING JURISDICTION	MTD	MOUNTED
AP	ACCESS PANEL	NTS	NOT TO SCALE
BFP	BACKFLOW PREVENTER	PACV	PRE-ACTION ALARM CHECK VALVE
BLDG	BUILDING	PC	(FIRE DEPARTMENT) PUMPER CONNECTION
BOP	BOTTOM OF PIPE	PIV	POST INDICATING VALVE
CA	CLEAN AGENT	PLBG	PLUMBING
CFF	CAPPED FOR FUTURE	PRV	PRESSURE REDUCING VALVE
CLG	CEILING	PS	PRESSURE SWITCH
CONT	CONTINUATION	(R)	REMOVE
COORD	COORDINATE	(REL.)	RELOCATED
CTE	CONNECT TO EXISTING	RM	ROOM
CU	COPPER	RPZ	REDUCED PRESSURE ZONE BFP
CW	COLD WATER	RV	RELIEF VALVE
DACV	DRY PIPE ALARM CHECK VALVE	SACV	(WET PIPE) SPRINKLER ALARM CHECK VALVE
DIA	DIAMETER	SD	SMOKE DETECTOR
DIC	DOWN IN CHASE	SP	STAND PIPE
DIW	DOWN IN WALL	SPK	SPRINKLER
DCVA	DOUBLE CHECK VALVE ASSEMBLY	TH	(FIRE DEPARTMENT) TEST HEADER
DN	DOWN	TOP	TOP OF PIPE
DR	DRAIN	TS	TAMPER SWITCH
DS	DOWNSPOUT	TTS	TIGHT TO STEEL
DT	DROP AND TRANSITION	TYP	TYPICAL
DWG	DRAWING	UIC	UP IN CHASE
ENC	ENCLOSURE	UIW	UP IN WALL
(E)	EXISTING	UL	UNDERWRITER'S LABORATORY
EXIST.	EXISTING	VCFF	VALVED AND CAPPED FOR FUTURE
FBO	FURNISHED BY OWNER	WI	WITH
FC	FLEXIBLE CONNECTION	WIV	WALL INDICATING VALVE
FCVA	FLOOR CONTROL VALVE ASSEMBLY	WMG	WATER MOTOR GONG

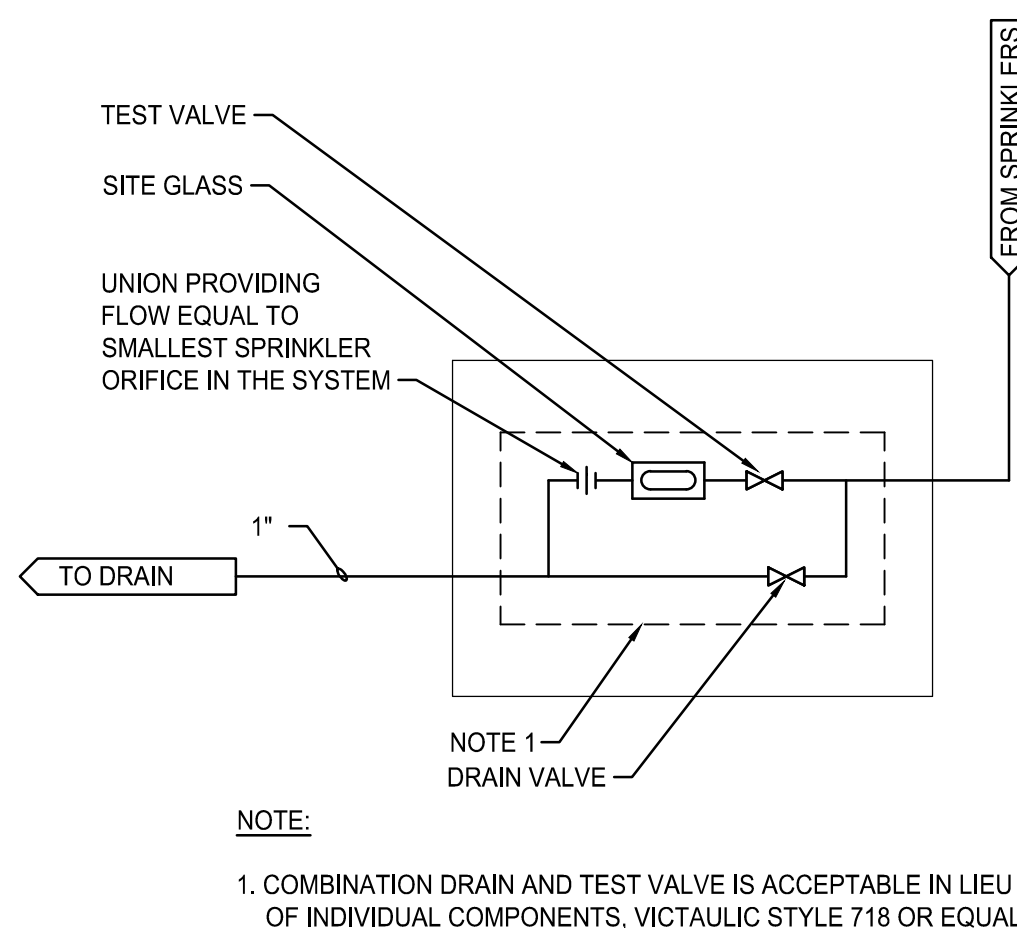
CA	CLEAN AGENT
D	DRY PIPE SPRINKLER
DR	DRAIN
F	FIRE SERVICE
FP	COMBINATION FIRE PROTECTION
G	DELUGE SPRINKLER
PA	PRE-ACTION SPRINKLER
SPK (X)	WET-PIPE SPRINKLER (ZONE X)
SP	STAND PIPE

21 00 00 - GENERAL REQUIREMENTS

1. THE FOLLOWING APPLIES TO FIRE PROTECTION PIPING TRADES.
2. OBTAIN ALL PERMITS AND APPROVALS TO PERFORM THE WORK.
3. VERIFY ALL MEASUREMENTS AND EXISTING CONDITIONS IN THE FIELD. GENERAL SCHEMATIC LAYOUT IS INDICATED; ALL OFFSETS, OBSTRUCTIONS, AND EXISTING CONFIGURATIONS AND CONSTRAINTS MUST BE FIELD VERIFIED.
4. INSTALL ALL NEW AND RELOCATED EXISTING COMPONENTS IN ACCORDANCE WITH MANUFACTURER RECOMMENDATIONS, APPLICABLE CODES AND STANDARDS.
5. COORDINATE WITH OWNER FURNISHED EQUIPMENT AND SYSTEMS
6. THIS RENOVATION WORK WILL TAKE PLACE IN OCCUPIED SPACE. INSTALLATIONS SHALL NOT AFFECT OCCUPING OPERATIONS. COORDINATE HOURS AVAILABLE TO PERFORM WORK WITH THE OWNER AND GENERAL CONTRACTOR.
7. SEAL INTERIOR PIPE PENETRATIONS WITH FIRE SEALANT. SEAL EXTERIOR WALL PIPE PENETRATIONS WATER TIGHT.
8. CUT AND PATCH SURFACES, RESTORING ORIGINAL FINISHES.
9. EQUIPMENT LISTED IS THE BASIS OF DESIGN, OR APPROVED EQUAL.
10. SUBMITTALS, PRE-CONSTRUCTION: SUBMIT CATALOG CUT SHEETS OF PROPOSED EQUIPMENT FOR ENGINEER REVIEW AND APPROVAL PRIOR TO PURCHASE AND INSTALLATION.
11. SUBMITTALS, DURING CONSTRUCTIONS: SUBMIT COPIES OF PIPE ROUGH-IN PRESSURE TESTS AS COMPLETED.
12. SUBMITTALS, POST CONSTRUCTION: SUBMIT COPIES OF FINAL PRESSURE TEST, FLUSHING AND PLUMBING DISINFECTION TESTS. SUBMIT COPIES OF COMPLETED MANUFACTURER START UP REPORTS FOR EQUIPMENT.
13. OPERATIONS AND MAINTENANCE MANUALS: SUBMIT ALL TESTING DATA AND COPIES OF EQUIPMENT PRODUCT DATA, INCLUDING MAINTENANCE INFORMATION IN A TABBED, NEATLY ORGANIZED THREE RING BINDER. INCLUDE VALVE IDENTIFICATION CHARTS PROVIDE 3 COPIES TO THE OWNER.
14. PIPE IDENTIFICATION: LABELING SHALL APPEAR AT INTERVALS OF NOT MORE THAN 20 FEET AND AT LEAST ONE IN EACH ROOM AND EACH STORY TRAVELERS BY THE PIPING SYSTEM. ALL PIPING SHALL BE CLEARLY IDENTIFIED SPECIFICALLY FOR TYPE OF SERVICE WITH COILED PLASTIC PIPE MARKERS AND FLOW DIRECTION ARROWS.
15. VALVE IDENTIFICATION: PROVIDE A CIRCULAR BRASS TAG AND CHAIN ON EACH VALVE. TAG TO INCLUDE A DISCRETE NUMBER AND SHALL BE COORDINATED WITH ANY CURRENT FACILITY NUMBERING SCHEME OR STANDARD.
16. RECORD DRAWINGS: MAINTAIN A CURRENT SET OF MARKED UP CONSTRUCTION DRAWINGS ON SITE AT ALL TIMES. PROVIDE A COMPLETE SET OF THESE RECORD MARK-UPS TO THE ARCHITECT AT THE END OF THE PROJECT.

1. DESIGN AND PERFORM FIRE SPRINKLER WORK PER THE REQUIREMENTS OF THE INTERNATIONAL BUILDING CODE (WITH MAINE AMENDMENTS), FM GLOBAL, AND NFPA 13.
2. DESIGN AND INSTALL COMPLETE SYSTEMS, INCLUDING BUT NOT LIMITED TO: PIPE, FITTINGS, SPRINKLERS AND ACCESSORIES (ESCAUTCHEANS AT THRUSTAL PENETRATIONS), PROVIDE FLOW, PRESSURE AND SUPERVISORY DEVICES. COORDINATE SYSTEM SUPERVISION WITH THE FIRE ALARM CONTRACTOR.
3. PROVIDE SUPPORTS PER NFPA 13, INCLUDING SEISMIC BRACING.
4. PROVIDE AUTOCAD GENERATED SHOP/LAYOUT DRAWINGS AND HYDRAULIC CALCULATIONS FOR REVIEW AND APPROVAL PRIOR TO INSTALLATION.
5. DESIGN CRITERIA:
 - 5.1. GENERAL OFFICE SPACE: FM HC-1 OCCUPANCY: 0.1 GPM/OVER 1500 SF PLUS 250 GPM HOSE STREAM.
 - 5.2. DESIGN SERVICE AREAS, MECHANICAL ROOMS, ELECTRICAL ROOM, PRINT SHOP AND GENERAL STORAGE AREAS: FM HC-2 OCCUPANCY: 0.2 GPM/SF OVER 2500 SF PLUS 250 GPM HOSE ALLOWANCE.
 - 5.2.1. EXACT STORAGE ARRANGEMENT AND PRODUCTS TO BE STORED TO BE VERIFIED. STORAGE OCCUPANCIES TO BE DESIGNED IN ACCORDANCE WITH NFPA 13 CHAPTERS 10 AND FM DATA SHEETS.
 - 5.3. STORAGE OCCUPANCIES: PER FM DATA SHEETS.
 - 5.4. ALL OTHER AREAS: IN ACCORDANCE WITH NFPA 13.
6. WATER SUPPLY AND PERFORMANCE: OBTAIN FLOW TEST DATA AS NECESSARY TO SERVE AS THE BASIS FOR HYDRAULICALLY CALCULATED SYSTEMS.
7. HYDRAULIC DESIGN CRITERIA, GENERAL:
 - A. MAXIMUM PIPE LINE VELOCITY: 25 FPS
 - B. MINIMUM CUSHION BETWEEN AVAILABLE WATER SUPPLY AND SYSTEM REQUIREMENTS (FACTOR OF SAFETY) 10 PSIG
9. INSTALL SYSTEM AS TIGHT TO STRUCTURE AS POSSIBLE TO MAXIMIZE AVAILABLE HEADROOM. ARRANGE SPRINKLERS IN LOGICAL PATTERNS. CENTER HEADS IN CEILING TILES WHEN APPLICABLE.
10. PROVIDE NEW SPRINKLER HEADS WITHIN SCOPE OF WORK AREA. COORDINATE BRANCH PIPE ROUTING WITH ALL MEP SYSTEMS. COORDINATE SPRINKLER HEAD LOCATION WITH CEILING MOUNTED DIFFUSERS, LIGHTS 20'0" FROM SPRINKLER HEADS. PROVIDE PER NFPA 13 AND FM GLOBAL REQUIREMENTS.

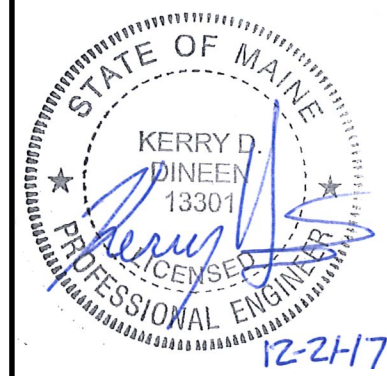
1. PROVIDE COMPONENTS AND INSTALLATIONS CAPABLE OF PRODUCING PIPING SYSTEMS WITH THE FOLLOWING MINIMUM WORKING PRESSURE RATINGS, UNLESS OTHERWISE NOTED:
 - A. FIRE PROTECTION SPRINKLER SYSTEMS: 175 PSIG.
2. SYSTEM COMPONENTS TO BE LI LISTED OR FM APPROVED.
3. ABOVE GRADE WET SYSTEM SPRINKLER PIPING (SPK)
 - A. PIPING 2-INCH AND SMALLER: SCHEDULE 40 STEEL WITH THREADED-AND-IRON FITTINGS.
 - B. PIPING 2-1/2-INCH AND LARGER: SCHEDULE 10 STEEL WITH GROOVED FITTINGS.
 - C. BUTTERFLY SPRINKLER SYSTEM - SCHEDULE 40 STEEL PIPING THROUGHOUT.
5. SPRINKLER SYSTEM VALVES AND SPECIALTIES: PROVIDE VALVE INSPECTOR'S TEST STATIONS AND TRIM AS NECESSARY.
 - A. REQUIRE HYDRAULIC PLACARDS AND OTHER SIGNAGE AS REQUIRED BY NFPA 13.
 - E. BUTTERFLY SPRINKLER VALVES UP TO 2-1/2" VICTAULOID #706 - 300 PSI SERIES.
6. FIRE SPRINKLERS: QUICK RESPONSE, FM APPROVED SPRINKLERS THROUGHOUT. NON QUICK RESPONSE SPRINKLERS MUST BE APPROVED BY FM GLOBAL.
 - A. ROOMS WITH SUSPENDED CEILING: SEMI-RECESS SPRINKLERS WITH CHROME FINISH TO MATCH EXISTING.
 - B. ROOMS WITHOUT CEILING: UPRIGHT WITH SPRINKLER GUARDS FOR SPRINKLERS SUBJECT TO MECHANICAL DAMAGE.
 - C. ROOMS WITH HARD DRYWALL CEILING: CONCEALED TYPE SPRINKLERS.
 - D. PROVIDE SPRINKLERS WITH TEMPERATURE RATINGS IN ACCORDANCE WITH NFPA 13.
7. FIRE SPRINKLER SYSTEM TESTING: TEST SYSTEMS PER NFPA 13 REQUIREMENTS, AND AS DIRECTED BY THE AHJ. MAKE CORRECTIONS AND RETEST AS NECESSARY. PROVIDE NFPA 13 ABOVE-GRADE TEST REPORTS.



INSPECTORS TEST STATION DETAIL
NOT TO SCALE

ISSUED FOR CONSTRUCTION
12-21-17

CURRENT ISSUE STATUS



SMRT Architects and Engineers
144 Fore Street
Portland, Maine 04104
1.877.700.7678
www.smrtinc.com

ARCHITECTURE | ENGINEERING | PLANNING | INTERIORS | ENVIRONMENT

MAINE MEDICAL CENTER

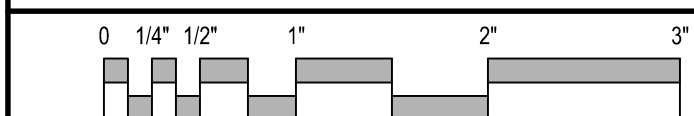
M.M.C. HUTCHINS DRIVE

RENOVATION

102 HUTCHINS DRIVE PORTLAND, ME

FIRE PROTECTION LEGEND, DETAILS AND SPECIFICATIONS

SHEET TITLE



SCALE: AS NOTED

PROJECT MANAGER

A/E OF RECORD:

JOB CAPTAIN:

DRAWN BY: GW

PROJECT NO:

--	--

FD001

FP001

SHEET No. _____

SHEET NO. COPYRIGHT 2