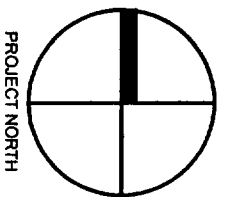
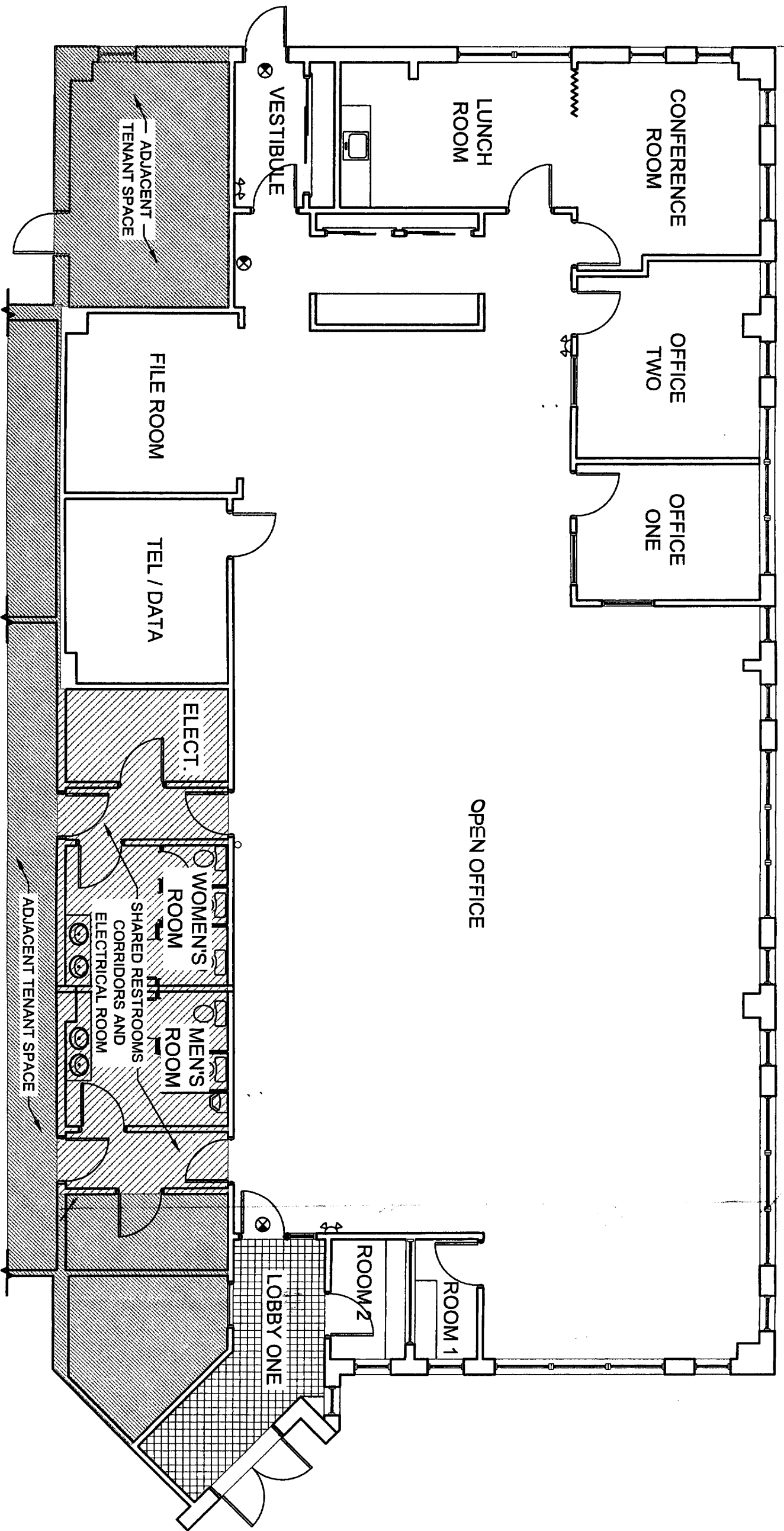


*General Business  
 a professional office  
 Are permitted to use  
 with fixtures for parking*



EXISTING PLAN  
 1/8" = 1'-0"

use  
 CTS

**HEWINS TRAVEL**  
 INTERIOR TENANT FIT-UP  
 PORTLAND, MAINE



TFH ARCHITECTS  
 100 COMMERCIAL STREET  
 PORTLAND MAINE 04101  
 TELEPHONE 207 775 8141  
 ARCHITECTURE PLANNING

UNS ANT

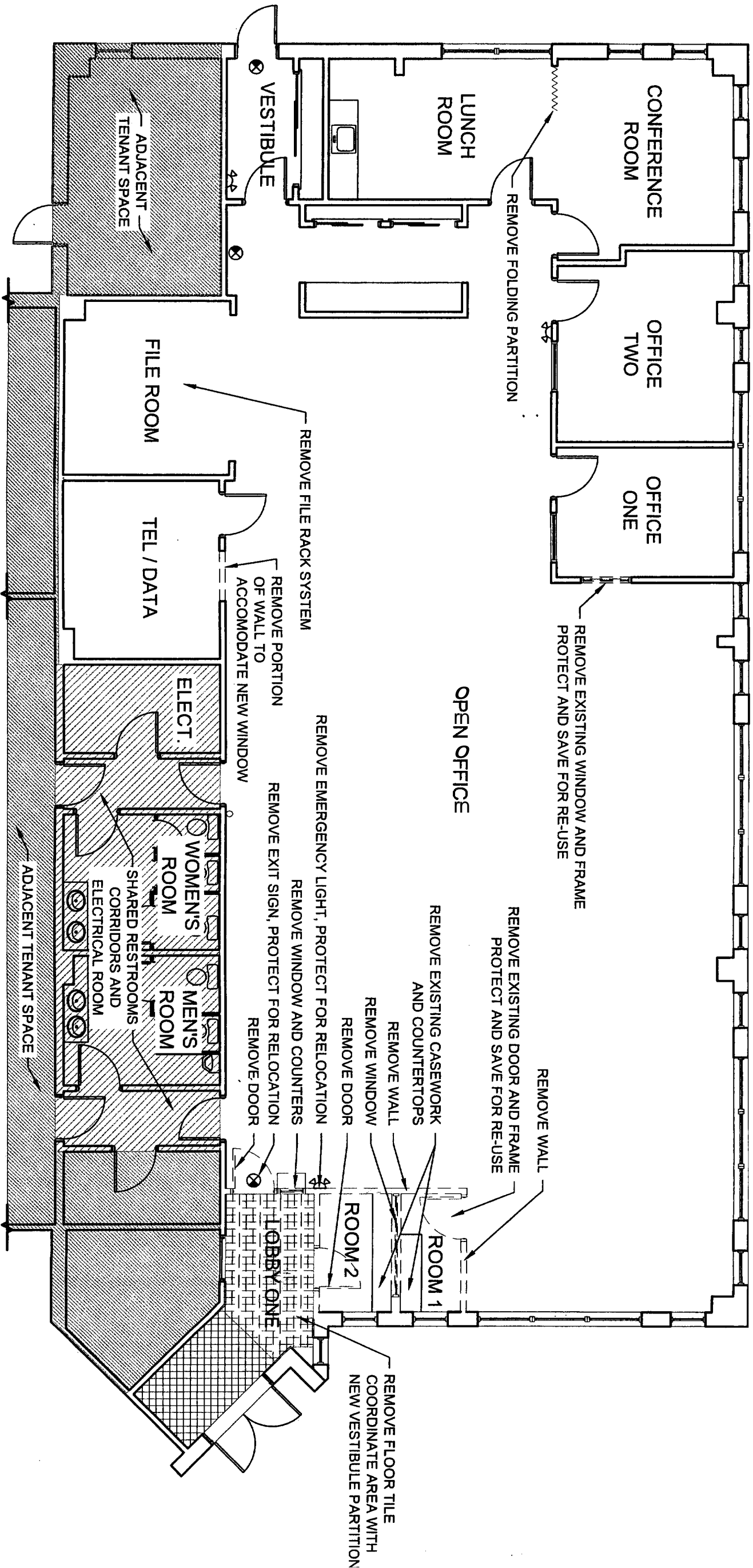
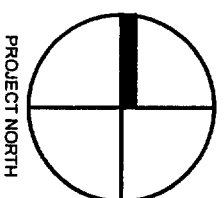
DATE:	07/31/05
PROJECT NO.	06
DRAWN BY:	RJS
CHECKED BY:	
SCALE:	AS SHOWN
SHEET TITLE:	Existing Plan

**EX**  
**101**

WALL LEGEND	
EXISTING WALL	
WALL TO BE REMOVED	

**DEMOLITION NOTES**

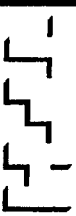
CONTRACTOR TO VERIFY AND COORDINATE ALL STRUCTURAL ELEMENTS PRIOR TO COMMENCING DEMOLITION



**DEMOLITION PLAN**

1/8" = 1'-0"

**HEWINS TRAVEL**  
 INTERIOR TENANT FIT-UP  
 PORTLAND, MAINE

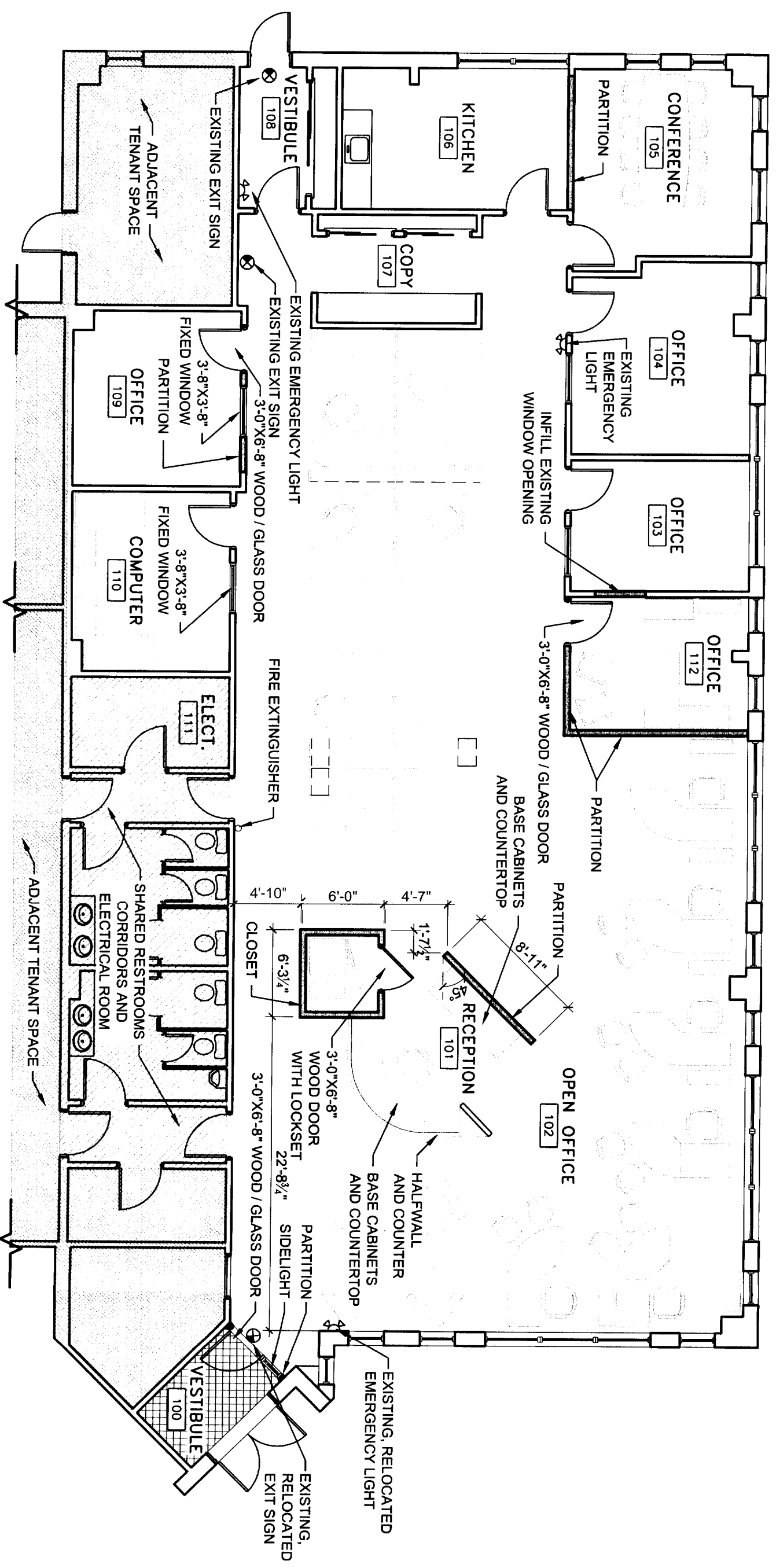
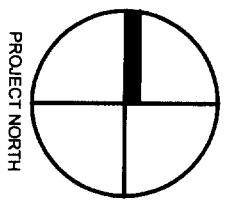


**TFH ARCHITECTS**  
 100 COMMERCIAL STREET  
 PORTLAND MAINE 04101  
 TELEPHONE 207 775 8141  
 ARCHITECTURE PLANNING

CONSULTANTS:

DATE:	07/31/06
PROJECT NO.:	06
DRAWN BY:	RJS
CHECKED BY:	
SCALE:	AS SHOWN
SHEET TITLE:	Demolition Plan

WALL LEGEND	
	EXISTING WALL
	NEW WALL



PLAN  
1/8" = 1'-0"

**HEWINS TRAVEL**  
**INTERIOR TENANT FIT-UP**  
 PORTLAND, MAINE



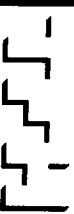
TFH ARCHITECTS  
 100 COMMERCIAL STREET  
 PORTLAND MAINE 04101  
 TELEPHONE 207 776 8141  
 ARCHITECTURE PLANNING

CONSULTANTS:

DATE:	07/31/06
PROJECT No.	06
DRAWN BY:	RJS
CHECKED BY:	
SCALE:	As Shown

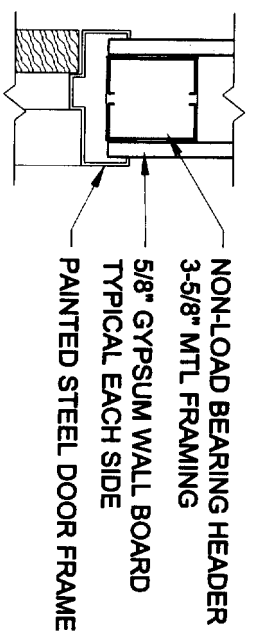
SHEET TITLE:  
 Interior Layout  
 Plan

**HEWINS TRAVEL**  
**INTERIOR TENANT FIT-UP**  
 PORTLAND, MAINE

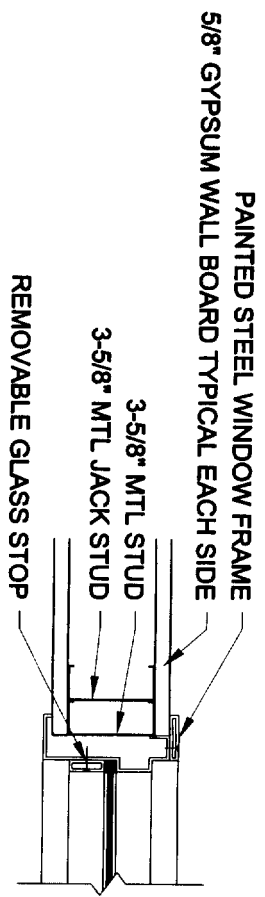


TFH ARCHITECTS  
 100 COMMERCIAL STREET  
 PORTLAND MAINE 04101  
 TELEPHONE 207 775 8141  
 ARCHITECTURE PLANNING  
 CONSULTANTS:

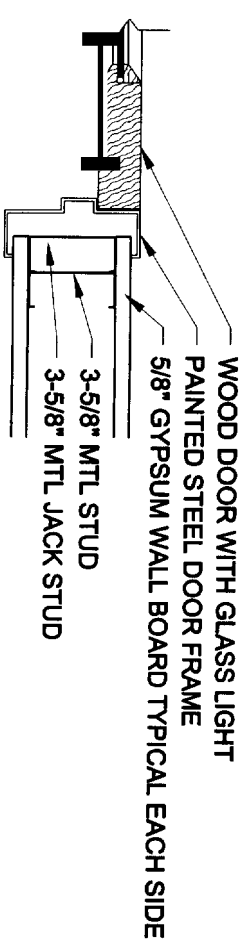
DATE:	07/31/06
PROJECT No.	06
DRAWN BY:	RLS
CHECKED BY:	
SCALE:	As Shown
SHEET TITLE:	Interior Elevations Door and Window Details



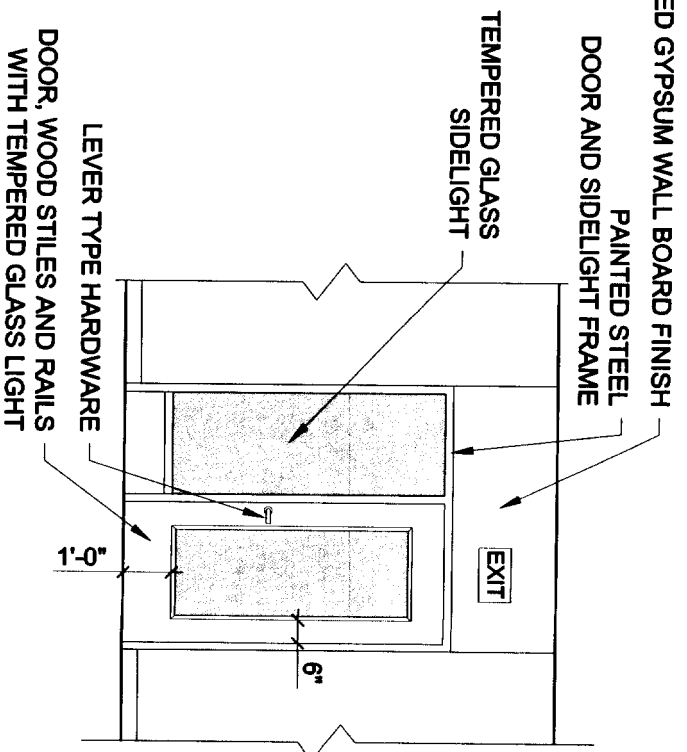
**4 SECTION DETAIL AT INTERIOR DOOR HEAD**  
 1-1/2" = 1'-0"



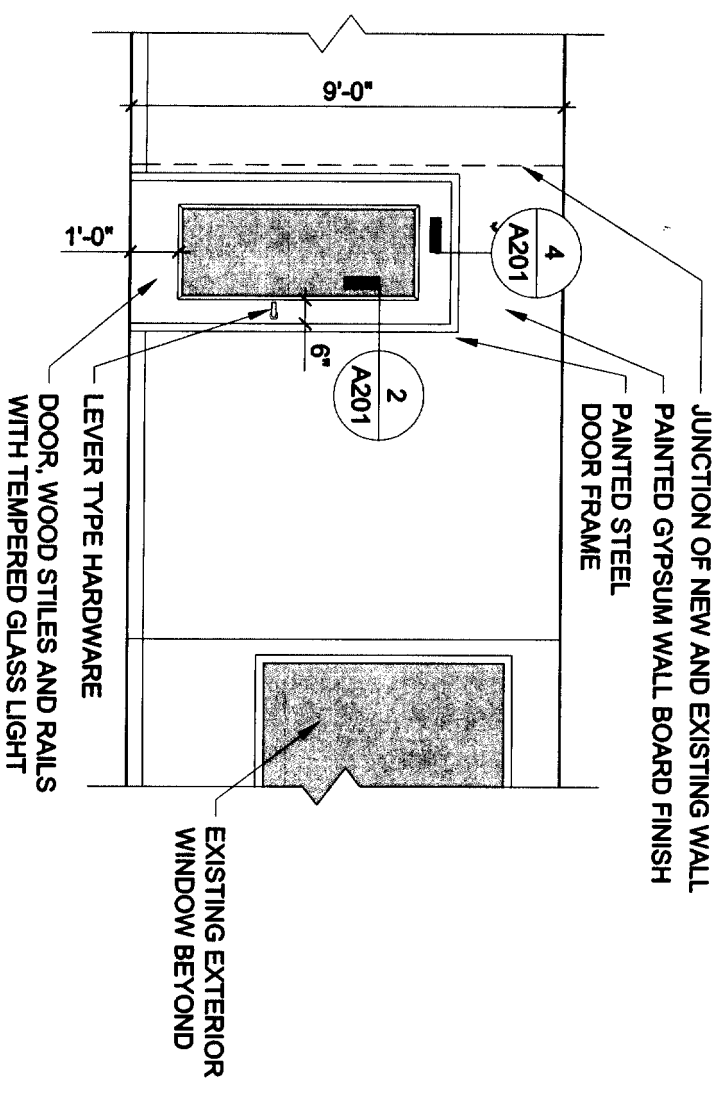
**3 PLAN DETAIL AT INTERIOR WINDOW .IAMR**  
 1-1/2" = 1'-0"



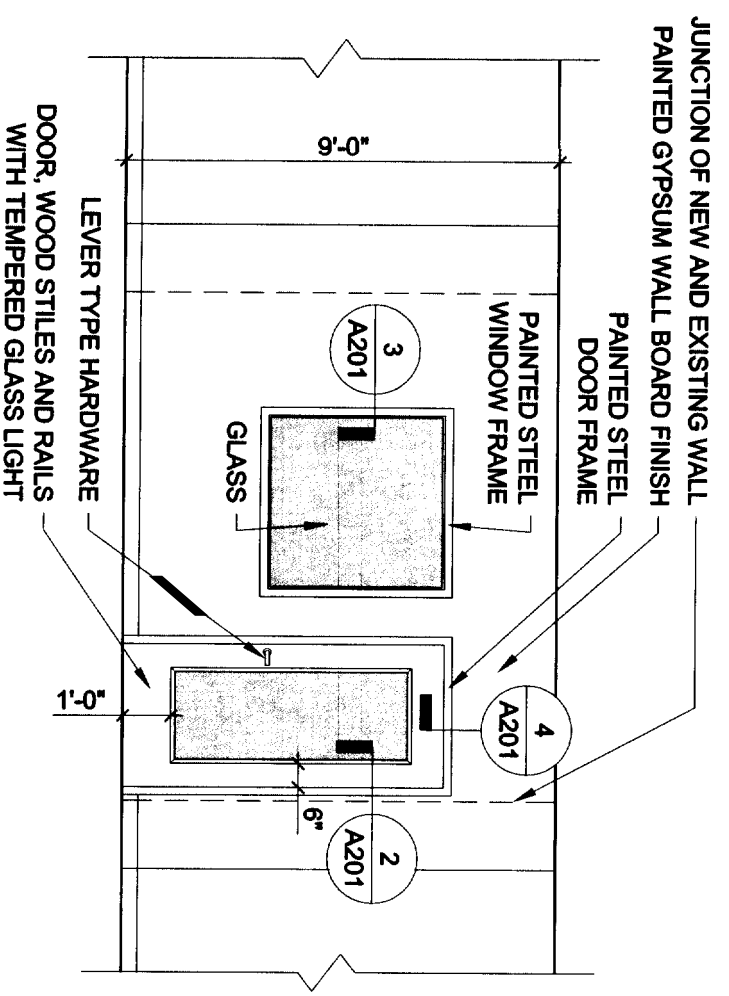
**2 SECTION DETAIL AT INTERIOR DOOR .IAMR**  
 1-1/2" = 1'-0"



**1 INTERIOR ELEVATION - VESTIBULE 100 FROM OPEN OFFICE 102**  
 1/4" = 1'-0"



**6 INTERIOR ELEVATION - OFFICE 112 FROM OPEN OFFICE 102**  
 1/4" = 1'-0"



**5 INTERIOR ELEVATION - OFFICE 109 FROM OPEN OFFICE 102**  
 1/4" = 1'-0"