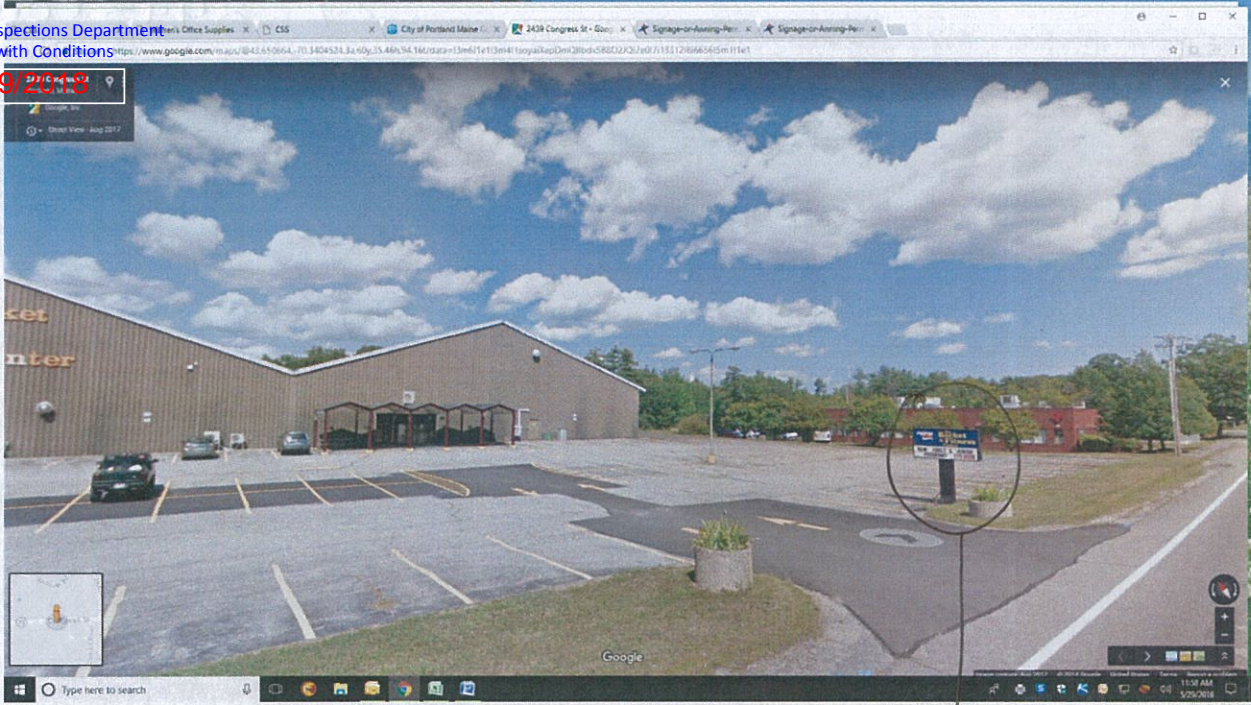




Permitting and Inspections Department
Approved with Conditions

06/29/2018



↓
Current
sign

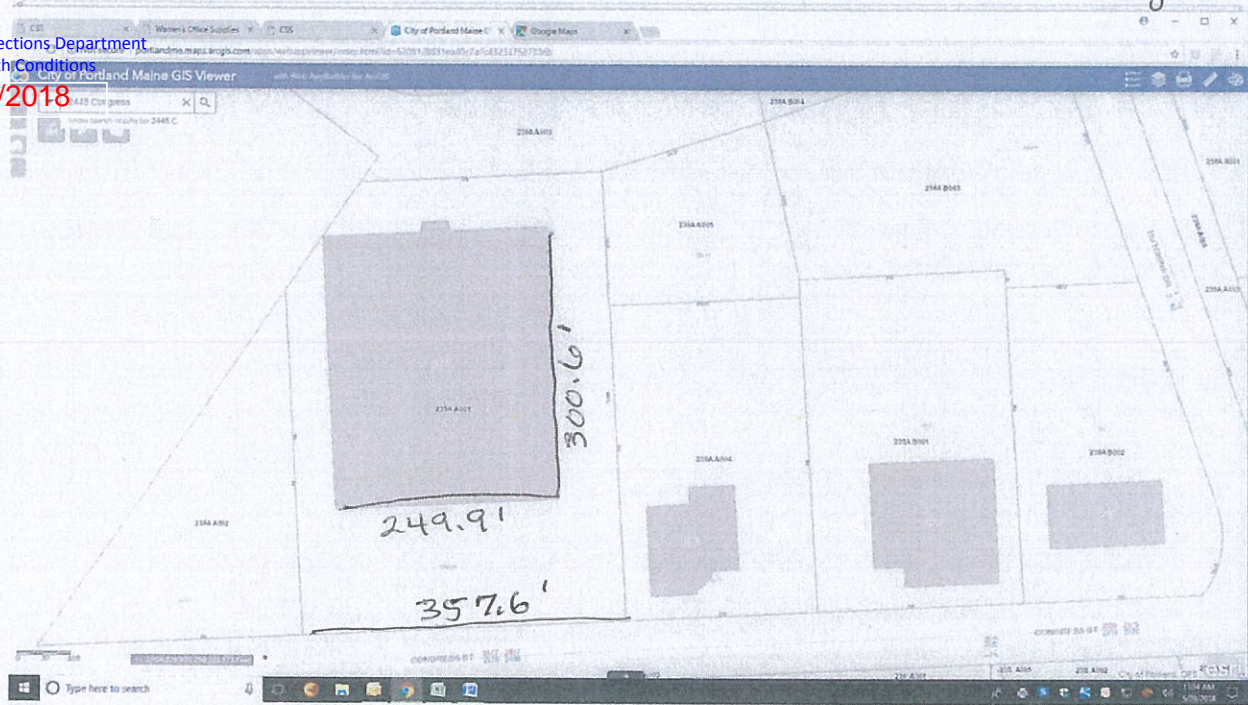


2445 Congress ST

Permitting and Inspections Department

Approved with Conditions

06/29/2018



lot frontage
on Congress ST = 357.6



Permitting and Inspections Department
Approved with Conditions
06/29/2018



5" SQ. POLES
POLE WRAP & REVEAL

REPLACING (1) FREESTANDING MULTI-TENANT INTERNALLY ILLUMINATED SIGN

15'-0"



26.29"

(1) D.F. 51" X 69" LED INTERNALLY ILLUMINATED SIGN

24.5 SQ. FT.

CABINET & FACES: WHITE
METAL FACES

GRAPHICS JIGGED OUT COPY BACKED UP WITH WHITE ACRYLIC
3/4" PUSH THRU TO BE HALO LIT AND TRANS. VINYL ON FACE

19.4"

(2) S.F. 36" X 84" EMC 16MM / FULL COLOR

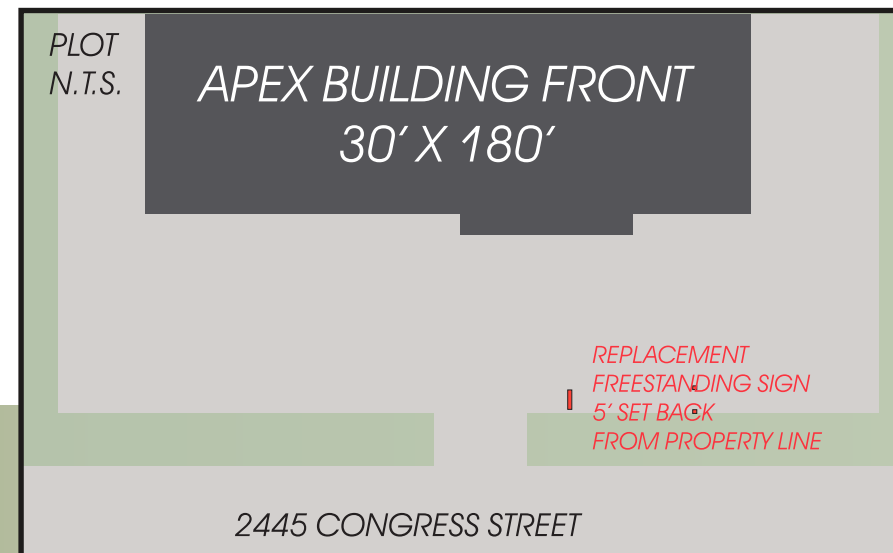
21 SQ. FT.

5"

(1) D.F. 42" X 84" LED INTERNALLY ILLUMINATED CABINET

24.5 SQ. FT.

TOTAL SQ. FT. 70 SQ. FT.



USING PANTONE + PALLETTE

- PANTONE #194 C
- PANTONE #4515 C

- TO BEST COMPLIMENT BUILDING
NEW COLOR TO BE DETERMINED
- BLACK REVEALS

PLEASE NOTE:

THIS IS A PROGRESS PRINT - FIELD MEASUREMENTS MAY OR MAY NOT NEED TO BE VERIFIED.

THIS DESIGN IS THE EXCLUSIVE PROPERTY OF BAILEY SIGN INCORPORATED AND ALL RIGHTS TO ITS USE OR REPRODUCTION ARE RESERVED.

THE ACCURACY OF THIS COLOR RENDERING IS LIMITED BY MEDIA AND OUTPUT DEVICES AND IS INTENDED FOR REPRESENTATIONAL USE ONLY. ACTUAL MANUFACTURING GRAPHIC COLORS ALSO VARY DEPENDING ON PROCESSES & MATERIALS USED. 100% COLOR MATCHES OF SUBMITTED SPECIFICATIONS CAN NOT BE GUARANTEED.

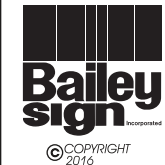
IF AN ELECTRIC SIGN, THEN INSTALLATION MUST BE ACCOMPLISHED IN TOTAL COMPLIANCE WITH ARTICLE 600 OF THE NATIONAL ELECTRIC CODE, THE REQUIREMENTS OF UNDERWRITERS LABORATORY, CANADIAN STANDARDS ASSOCIATION AND/OR ANY APPLICABLE LOCAL CODES. THIS INCLUDES PROPER GROUNDING AND BONDING OF THE SIGN.
ALL ELECTRICAL SIGNS REQUIRE ROUTINE MAINTENANCE.

CLIENT

ACCEPTANCE SIGNATURE _____ DATE _____

BAILEY SIGN SALES REPRESENTATIVE

APPROVED _____ DATE _____



www.baileysign.com
9 Thomas Drive
Col. Westbrook Executive Park
Westbrook, ME 04092
207-774-2843 / 1-800-539-SIGN
Fax: 774-1193
E-Mail: sales@baileysign.com

CUSTOMER / SIGN LOCATION

APEX FITNESS & RACKET CENTER
2445 CONGRESS STREET
PORTLAND, MAINE

SALESPERSON: BB DRAWN BY: LWM

RS. # D-612 W.O. #

SCALE 1/2"=1' DATE 2/16/16 4/2/18

REVISION # / DATE / NOTES / INITIALS

- R1 5/16/18 REVISE O.A. HT./ SPACES
- R2 6/14/18 LOUNGE ART REC.
- R3 6/29/18 O.A. HT. TENANT DIRECTORY REVISED



DRAWING #

07555 AE R3

SHEET ____ OF ____



APEX fitness
2445 Congress.

Permitting and Inspections Department

Approved with Conditions

06/29/2018



[Faint handwritten notes]