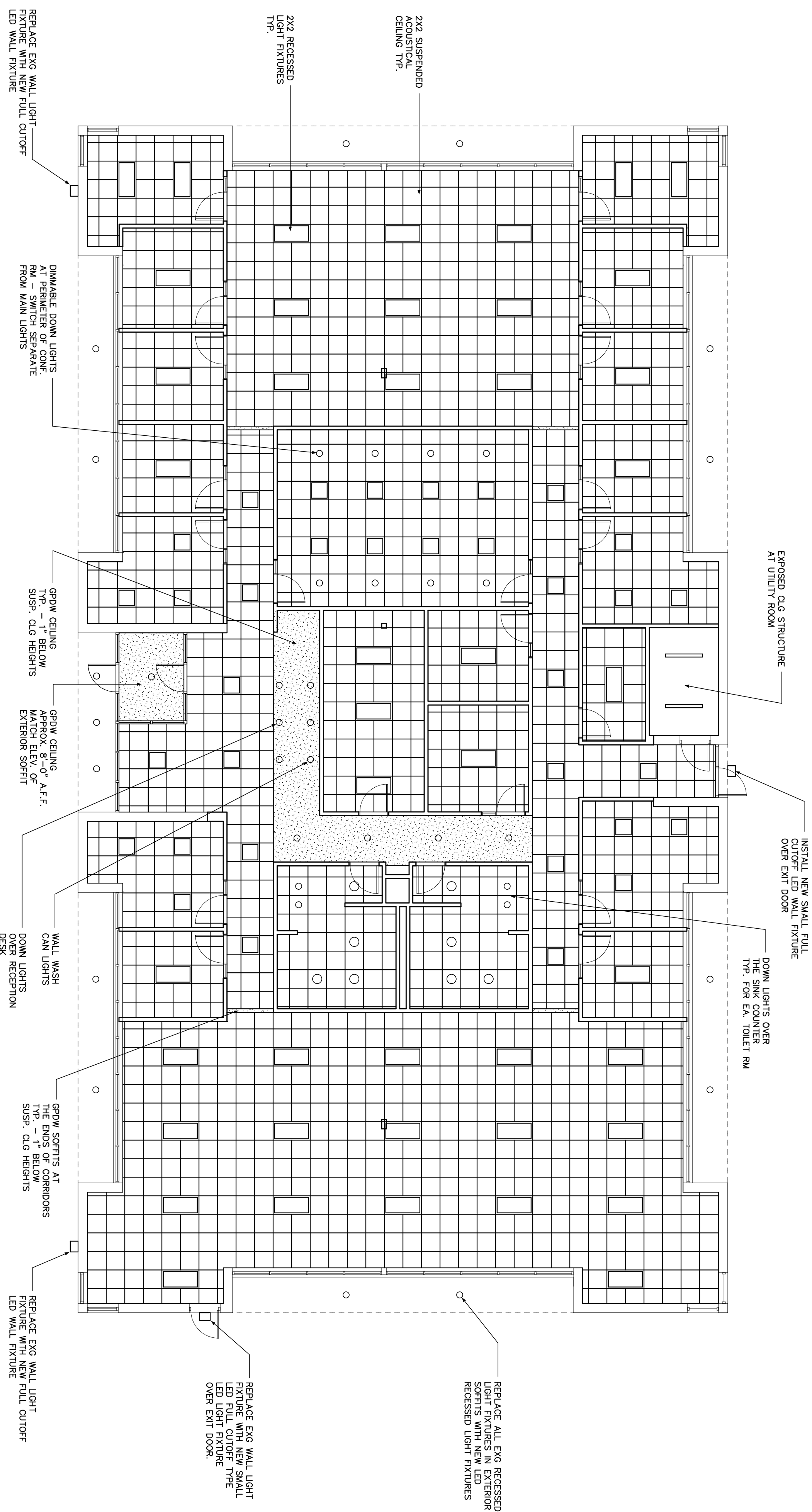


**CROSS INSURANCE
RENOVATIONS**

2367 CONGRESS STREET
PORTLAND, MAINE

GENERAL NOTES

1. REFER TO ROOM FINISH SCHEDULE ON SH1S A60.2 FOR CEILING HEIGHTS UNLESS NOTED OTHERWISE.
2. REFER TO MECHANICAL & ELECTRICAL DRAWINGS FOR ADDITIONAL INFORMATION AND CO-ORDINATION.
3. CONSTRUCT 5/8" FIRE RATED BOXES BEHIND ANY RECESSED LIGHTS OR OTHER RECESSED ELEMENTS TO MAINTAIN RATED FIRE RAININGS IN THE RATED ASSEMBLIES.
4. PROVIDE ACCESS PANELS WHERE NECESSARY TO VALVES, ETC., AND ACCESS PANELS SHALL BE FIRE RATED WHERE PENETRATING FIRE RATED BARRIERS.



Drawing Title
**REFLECTIVE
CEILING PLAN**

Drawing Number

A70.1

Mark	Date	Description
01 - 29 - 18		CONSTRUCTION DRAWINGS

Issue Dates