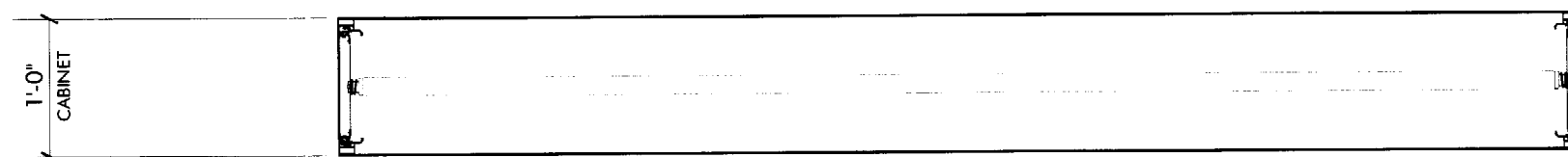


# Neokraft

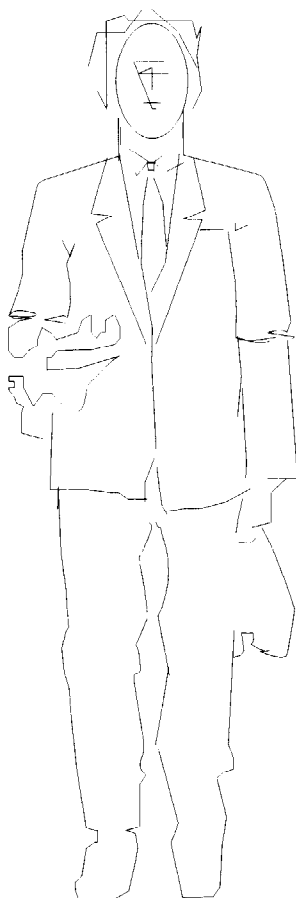
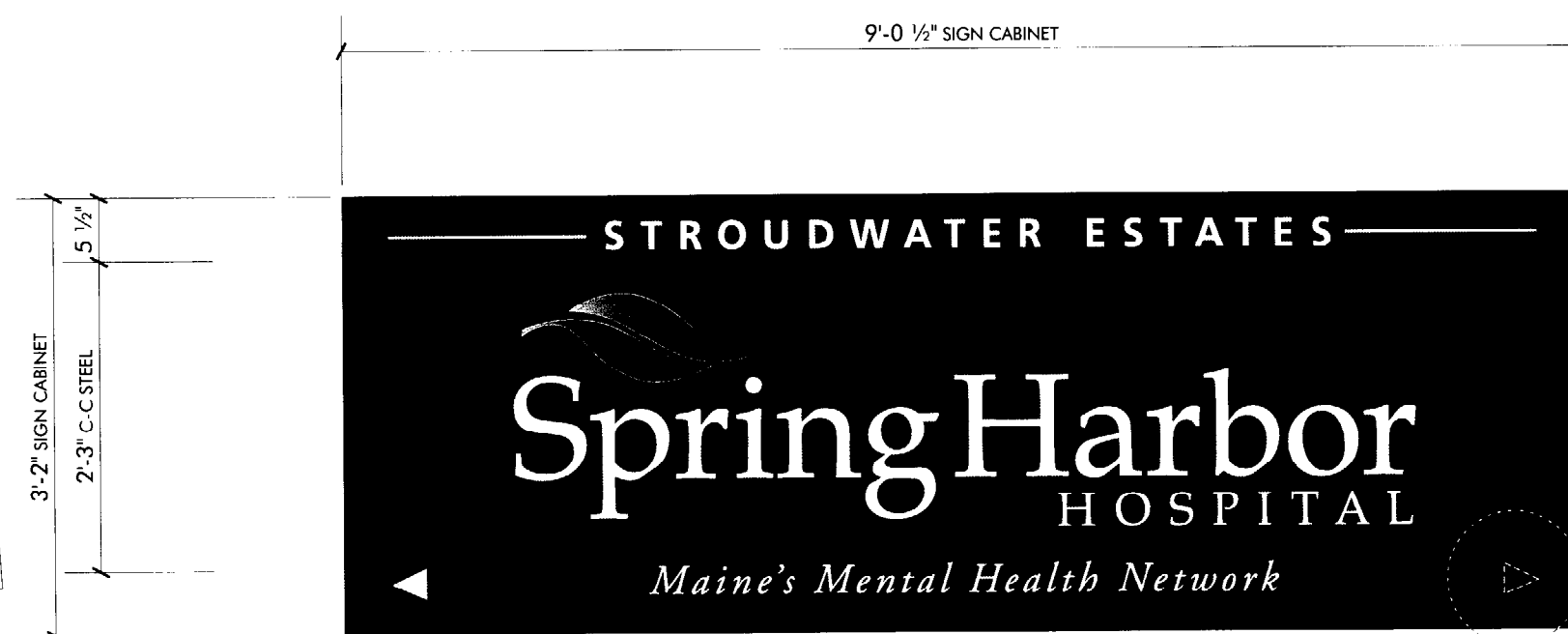
Neokraft Signs Inc.  
686 Main Street  
Lewiston, Maine 04240  
Telephone: 207.782.9654  
Facsimile: 207.782.0009  
1.800.339.2258  
<http://www.neokraft.com>

Custom Sign Fabrication

Except for designs supplied by the client, all ideas, plans or arrangements indicated on this drawing are copyrighted and owned by Neokraft Signs Inc. and shall not be reproduced, used by or disclosed to any person, firm or corporation without written permission of Neokraft Signs Inc.



PLAN VIEW



120V ELECTRICAL FEED BY OWNER

PHOTOCELL REQUIRED

SIGNCOMP SERIES 12  
CABINET, BLEED RETAINERS,  
1/8" ALUMINUM FACES,  
ROUTED, PAINT TO MATCH  
PANTONE 561 GREEN

PUSH-THRU PROJECTING  
ACRYLIC LOGO; SEE DWG. 4

PUSH-THRU FLUSH ACRYLIC  
TEXT; SEE DWG. 4

PUSH-THRU FLUSH ACRYLIC  
ARROWS, SIMILAR TO LOGO,  
NEAR PANTONE 574

SIGN MOUNTS WITH BOLTS  
TO STRAPS WITHIN STEEL SQR  
TUBE ARMS; SEE DWG. 3

**Spring Harbor  
Hospital 01432**

**FINAL APPROVED DESIGN**

Location: 123 Andover Road

Portland, ME

Drawing No.: 1 of 6

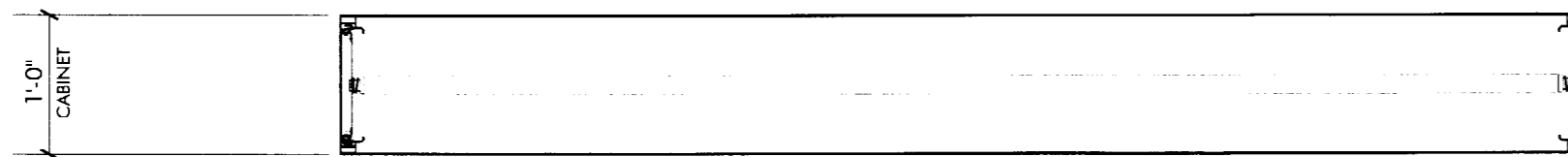
Drawn by: DS

Date: 01.16.2004

Gen Ref.:

**SIGN A—DOUBLE-FACE INT. ILLUM. GROUND SIGN**

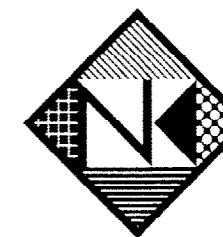
SCALE: 3/4"=1'-0" (1) REQUIRED



PLAN VIEW



NON-LIGHTED  
VINYL COPY



# Neokraft

Neokraft Signs Inc.  
686 Main Street  
Lewiston, Maine 04240  
Telephone: 207.782.9654  
Facsimile: 207.782.0009  
1.800.339.2258  
<http://www.neokraft.com>

Custom Sign Fabrication

Except for designs supplied by the client, all ideas, plans or arrangements indicated on this drawing are copyrighted and owned by Neokraft Signs Inc. and shall not be reproduced, used by or disclosed to any person, firm or corporation without written permission of Neokraft Signs Inc.

120V ELECTRICAL FEED BY  
OWNER

PHOTOCELL REQUIRED

GC TO VERIFY END OF SIGN  
TO RECEIVE ELECTRICAL

SAME FAB. AS SIGN A EXCEPT:

NO COPY ON OPPOSITE SIDE;  
METAL BACK

INCLUDE GSP WHITE [220-10]  
VINYL SIGNATURE COPY AS  
INDICATED

**Spring Harbor  
Hospital 01432**

**FINAL APPROVED DESIGN**

Location: 123 Andover Road  
Portland, ME

Drawing No.: 2 of 6

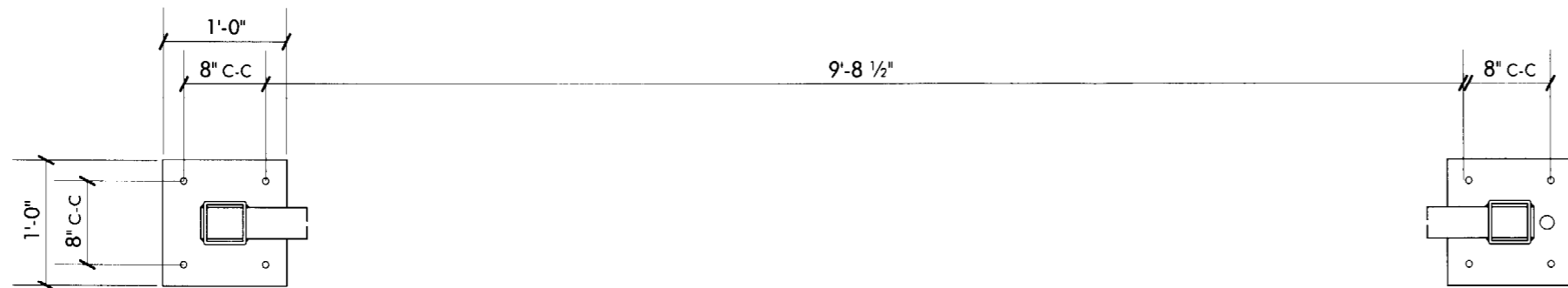
Drawn by: DS

Date: 01.16.2004

Gen Ref.:

**SIGN B—SINGLE-FACE INT. ILLUM. GROUND SIGN**

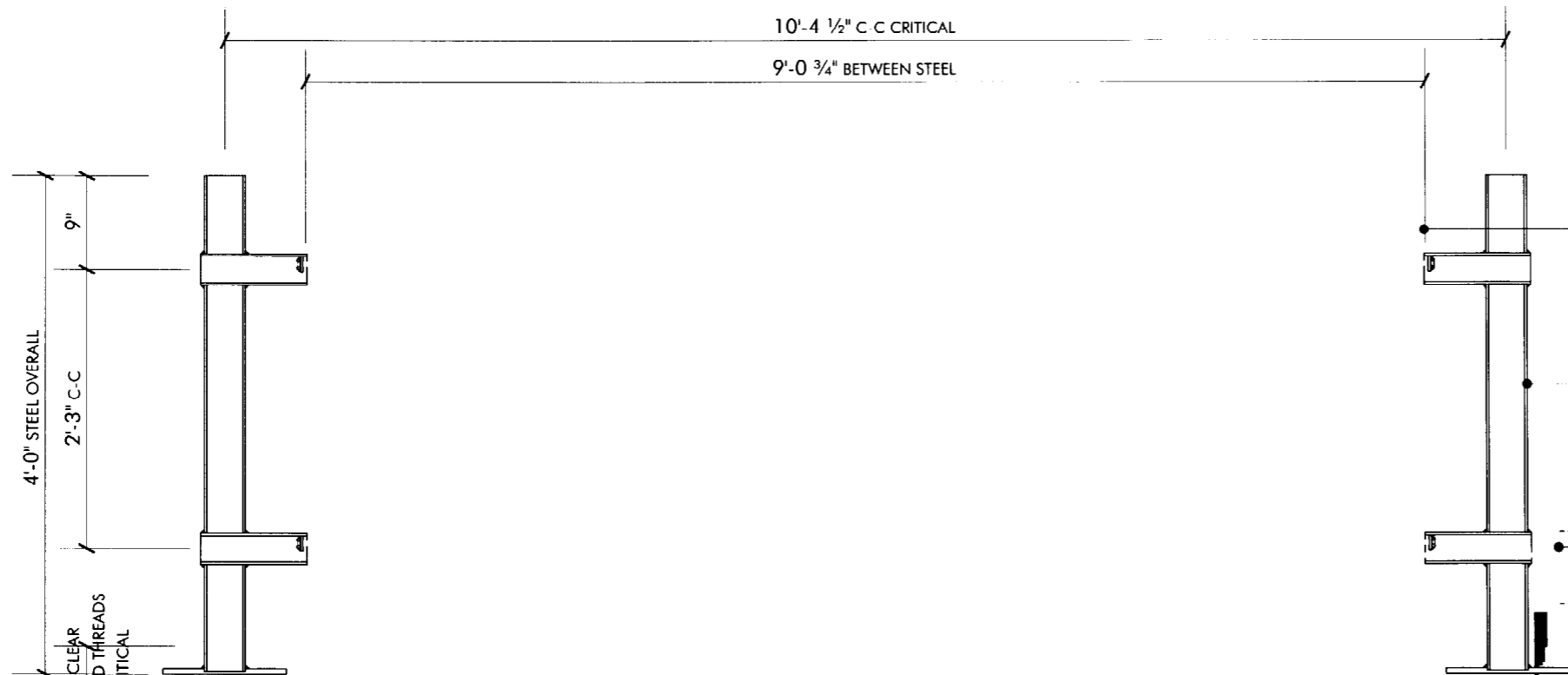
SCALE: 3/4" = 1'-0" (1) REQUIRED



(4) HOLES PER PLATE FOR 1/2" BOLTS, (1) SQR HOLE PER PLATE FOR LET-IN SUPPORT POST

ADD (1) HOLE PER PLATE FOR ELECTRICAL SWEEP TO (1) PLATE PER SIGN

**FOR SIGNS A & B—STEEL SUPPORT STRUCTURES**  
SCALE: 3/4" = 1'-0" FOR (2) SIGNS



**BASE INSTALLATION BY OTHERS: GC SHOULD NOTE CRITICAL CENTER TO CENTER PLACEMENTS AS DIMENSIONED, PLUMB, LEVEL AND IN-LINE**

3'-2" x 9'-0 1/2" SIGNS TO BE INSTALLED LATER BY NEOKRAFT

4" SQR STL POST, 3" SQR STL ARMS LET-THRU, WITH WELDED NUTS ON STRAPS FOR SIGN ATTACHMENT, 1/2" x 12" SQR STL PLATE

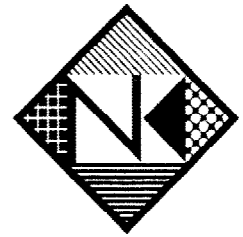
POLE COVERS BY OWNER; OWNER'S DESIGN TO PROVIDE ACCESS TO ELECTRICAL CONNECTION LOCATION NEAR TOP OF ELECTRICAL SWEEPS

PIERS/BASES BY OWNER

BRACED CAGES AS PROVIDED PREVIOUSLY: INCLUDING 1/2" STEEL THREADED RODS

120V ELECTRICAL SWEEP BY GC, AT ONE END OF EACH SIGN; GC TO VERIFY END OF SINGLE-FACE SIGNS TO RECEIVE ELECTRICAL

**SECTION—SIGNS A & B**



**Neokraft**

Neokraft Signs Inc.  
686 Main Street  
Lewiston, Maine 04240  
Telephone: 207.782.9654  
Facsimile: 207.782.0009  
1.800.339.2258  
<http://www.neokraft.com>

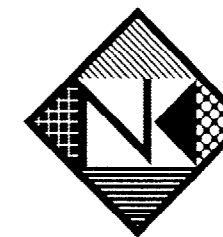
Custom Sign Fabrication

Except for designs supplied by the client, all ideas, plans or arrangements indicated on this drawing are copyrighted and owned by Neokraft Signs Inc. and shall not be reproduced, used by or disclosed to any person, firm or corporation without written permission of Neokraft Signs Inc.

**Spring Harbor Hospital 01432**

**FINAL APPROVED DESIGN**

Location:	123 Andover Road Portland, ME
Drawing No.:	3 of 6
Drawn by:	DS
Date:	01.16.2004
Gen Ref.:	



# Neokraft

Neokraft Signs Inc.  
686 Main Street  
Lewiston, Maine 04240  
Telephone: 207.782.9654  
Facsimile: 207.782.0009  
1.800.339.2258  
<http://www.neokraft.com>

Custom Sign Fabrication

Except for designs supplied by the client, all ideas, plans or arrangements indicated on this drawing are copyrighted and owned by Neokraft Signs Inc. and shall not be reproduced, used by or disclosed to any person, firm or corporation without written permission of Neokraft Signs Inc.

## Spring Harbor Hospital 01432

**FINAL APPROVED DESIGN**

Location: 123 Andover Road  
Portland, ME

Drawing No.: 4 of 6

Drawn by: DS

Date: 01.16.2004

Gen Ref.:



1/8" ALUMINUM FACE, ROUTED, PAINT TO MATCH  
PANTONE 561 GREEN

1/2" THICK CLEAR ACRYLIC LOGO, PUSH-THRU WITH  
1/4" PROJECTION, BACKED GSP WHITE TRANSL  
[230-10] VINYL

FRONT WITH 2-LAYER DURACHROME-PRINTED  
WHITE/CLEAR VINYL GRADIENT LEAF GRAPHIC;  
USE DC SPOT HOT GREEN, GREEN AND/OR  
PROCESS TO MATCH NEAR PANTONE 374 TO 561

VERIFY VINYL LAYERING PER SAMPLE IN  
PRODUCTION

1/4" THICK WHITE ACRYLIC TEXT, PUSH-THRU FLUSH

SECTION

TYPICAL FACE DETAILS

NO SCALE