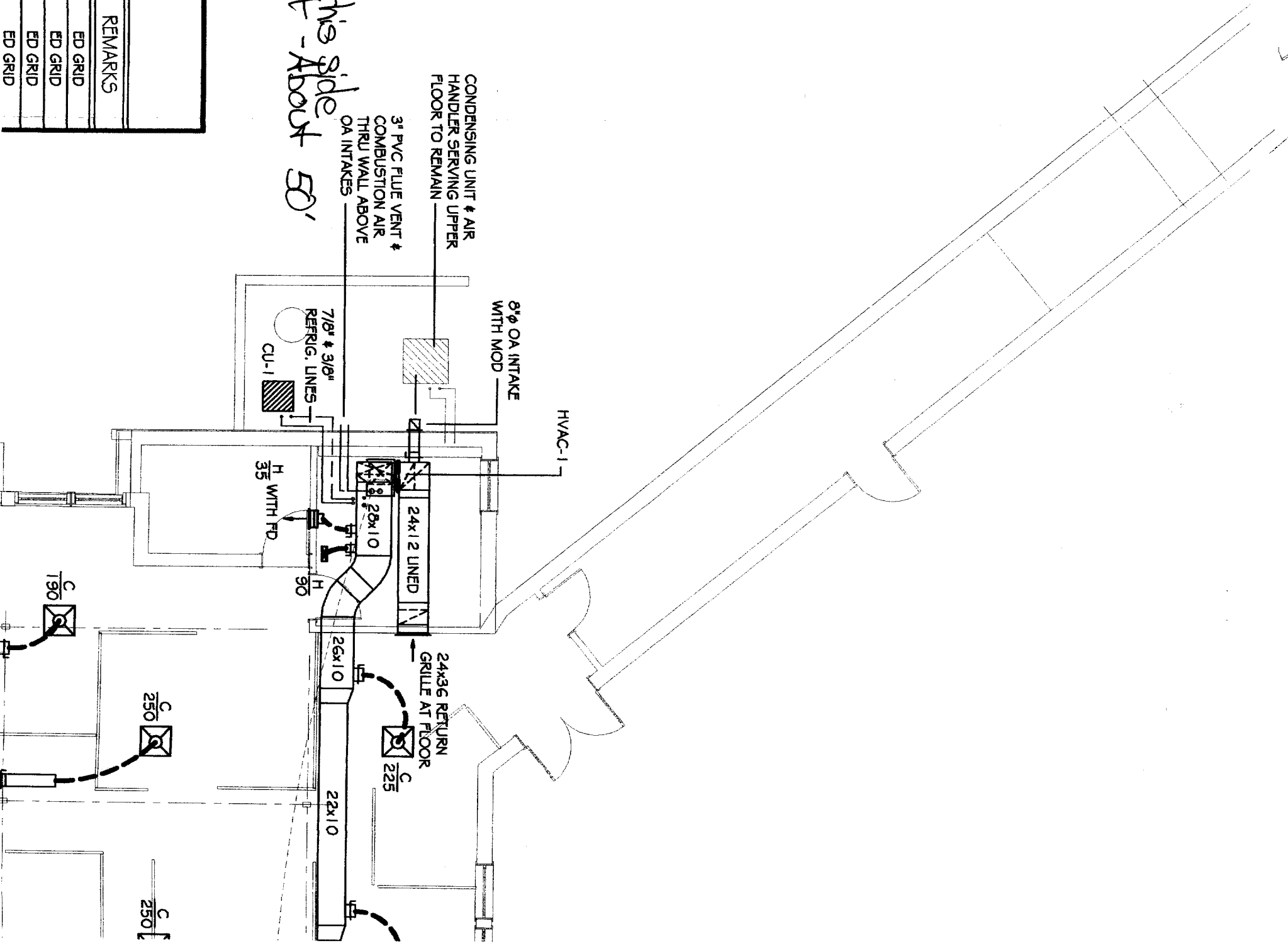


| DIFFUSERS-GRILLES-REGISTERS | | | | | | | | | |
|-----------------------------|----------------|----------|---------|-----|------|-------|----------|---------|--|
| SYMBOL | MFGR & MODEL # | SIZE | CFM | NC | PD | THROW | CONN. | REMARKS | |
| A | ANEMOSTAT #EPL | 6" DIA. | 0-100 | <20 | 0.03 | 2-6 | 6" DIA. | ED GRID | |
| B | ANEMOSTAT #EPL | 8" DIA. | 101-200 | <20 | 0.01 | 3-8 | 8" DIA. | ED GRID | |
| C | ANEMOSTAT #EPL | 10" DIA. | 201-400 | <29 | 0.05 | 5-14 | 10" DIA. | ED GRID | |
| D | ANEMOSTAT #EPL | 12" DIA. | 401-640 | <29 | 0.03 | 7-17 | 12" DIA. | ED GRID | |

*Furnace vents on this side
Face Congress St - About 50'
to road*



| SYMBOL | MFGR & MODEL# | SIZE | CFM | NC | PD | THROW | CONN. | REMARKS |
|--------|------------------|----------|----------|-----|------|-------|----------|---------|
| A | ANEMOSTAT #EPL | 6" DIA. | 0-100 | <20 | 0.03 | 2-6 | 6" DIA. | ED GRID |
| B | ANEMOSTAT #EPL | 8" DIA. | 101-200 | <20 | 0.01 | 3-8 | 8" DIA. | ED GRID |
| C | ANEMOSTAT #EPL | 10" DIA. | 201-400 | <29 | 0.05 | 5-14 | 10" DIA. | ED GRID |
| D | ANEMOSTAT #EPL | 12" DIA. | 401-640 | <29 | 0.03 | 7-17 | 12" DIA. | ED GRID |
| E | ANEMOSTAT #53HD | 12"x12" | 0-350 | <25 | 0.04 | — | 10" DIA. | — |
| F | ANEMOSTAT #GC5L | 12"x24" | 351-700 | <25 | 0.04 | — | 14" DIA. | — |
| G | ANEMOSTAT #GC5L | 24"x24" | 701-1300 | <30 | 0.03 | — | 16" DIA. | — |
| H | ANEMOSTAT #52VO | 12"x4" | 0-100 | <20 | 0.02 | 9-15 | 6" DIA. | VD |
| J | ANEMOSTAT #52VO | 14"x6" | 101-200 | <20 | 0.03 | 11-18 | 8" DIA. | VD |
| K | ANEMOSTAT #52VO | 16"x8" | 201-350 | <20 | 0.02 | 13-20 | 10" DIA. | VD |
| L | ANEMOSTAT #52VO | 24"x8" | 351-450 | <20 | 0.02 | 18-28 | 10" DIA. | VD |
| M | ANEMOSTAT 53HD | 8"x8" | 0-100 | <20 | 0.02 | — | 6" DIA. | VD |
| N | ANEMOSTAT #DM4 I | 6"x6" | 0-100 | <20 | 0.06 | 3-6 | 6"x6" | VD |
| P | ANEMOSTAT #DM4 I | 9"x9" | 101-200 | <20 | 0.06 | 4-9 | 9"x9" | VD |
| Q | ANEMOSTAT #DM4 I | 9"x12" | 201-350 | <20 | 0.06 | 5-11 | 9"x12" | VD |
| R | ANEMOSTAT #DM4 I | 12"x12" | 351-500 | <20 | 0.06 | 7-14 | 12"x12" | VD |
| S | ANEMOSTAT #DM I | 12"x12" | 351-500 | <20 | 0.06 | 7-14 | 12"x12" | VD |

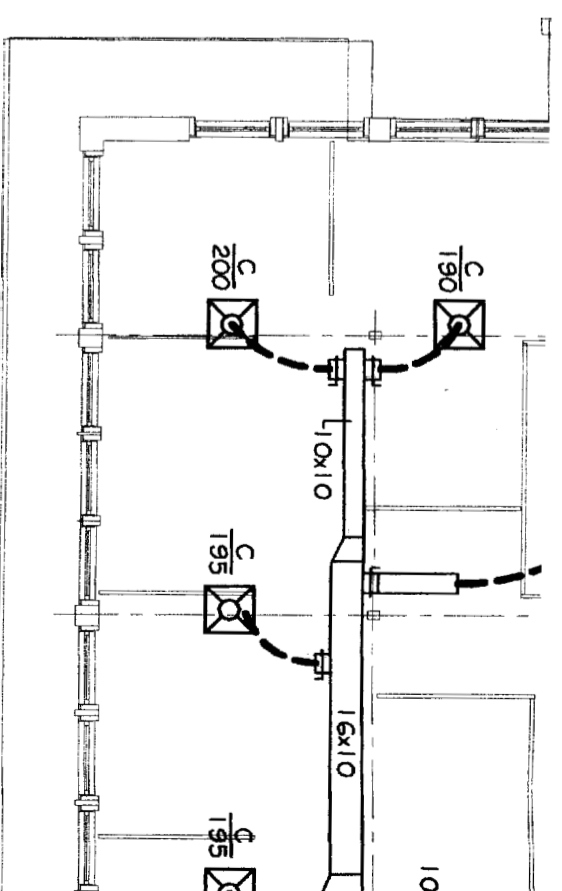
FAN SCHEDULE

| SYMBOL | MFG. | MOD. NO. | CFM | S.P. | HPW | RPM | ELEC. | REMARKS |
|--------|--------------------|----------|-----|------|----------------|------|-----------|------------------|
| EF-1 | PENN ZEPHER | Z10-S | 350 | 1/4" | 243 | 1050 | 120V-1PH. | ① ② ⑤ ⑥ |
| EF-2 | PENN ZEPHER | REX10-J | 300 | 3/8" | 147 | 2930 | 120V-1PH. | ① ② ⑤ |
| | ① DIRECT DRIVE | | | | ④ V-BELT | | | ⑤ SPEED CONTROL |
| | ② BACKDRIFT DAMPER | | | | ③ PRE-FAB CURB | | | ⑥ T-STAT CONTROL |

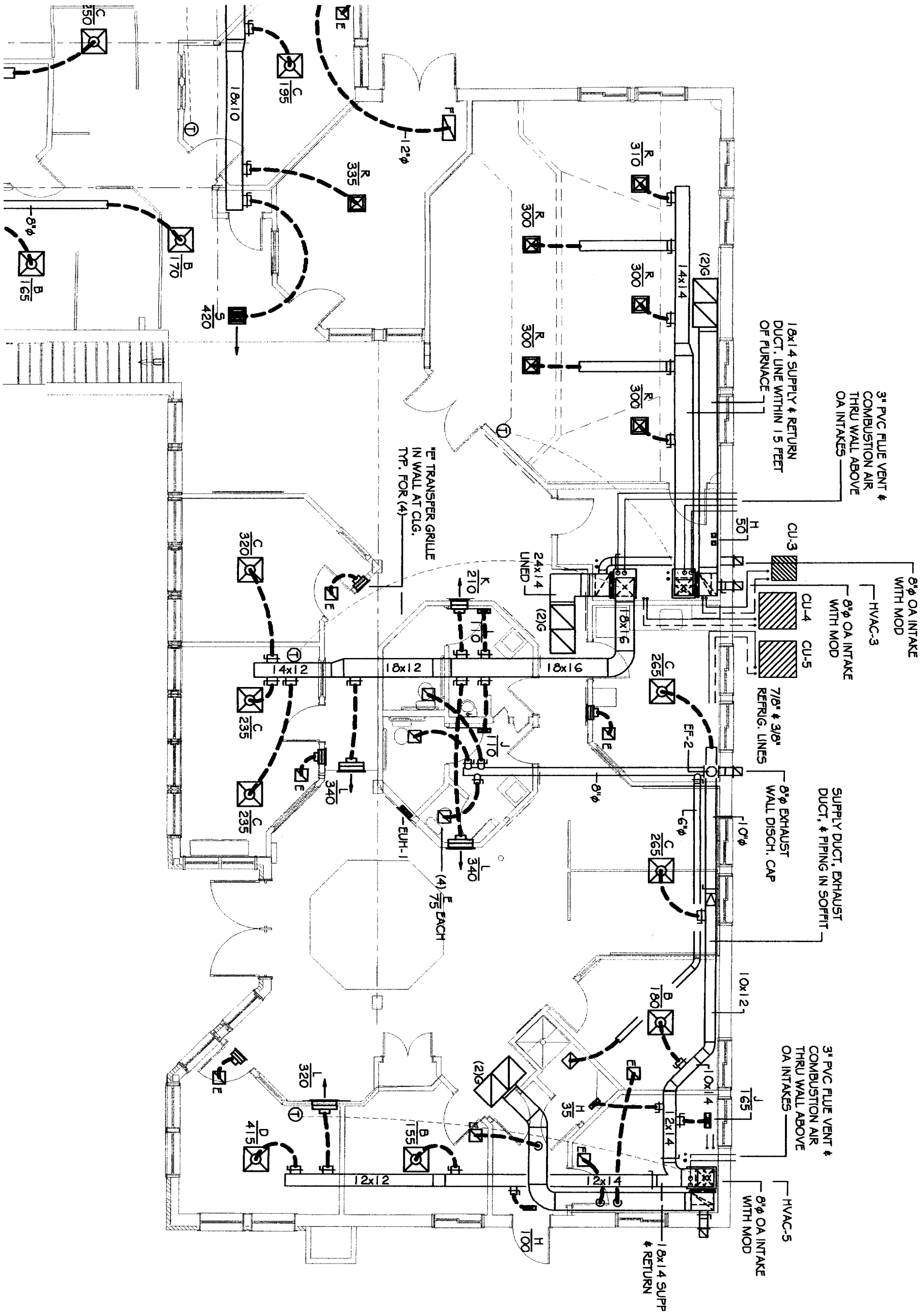
NOTES: ELECTRICIAN TO INTERLOCK EF-2 OPERATION WITH EXCEPTION LIGHT CIRCUIT.
FANS OVERSIZED TO RUN AT LOWER SPEEDS FOR SOUND.

ELECTRIC HEATERS

| SYMBOL | MOD. NO. | CFM | WATTS | ELECTRICAL | REMARKS |
|--------|-------------|-----|-------|------------|----------------------------------|
| EUH-1 | F3323TTD-RP | 175 | 1500 | 208V-1PH. | RECESSED IN WALL, INTEGRAL TSTAT |



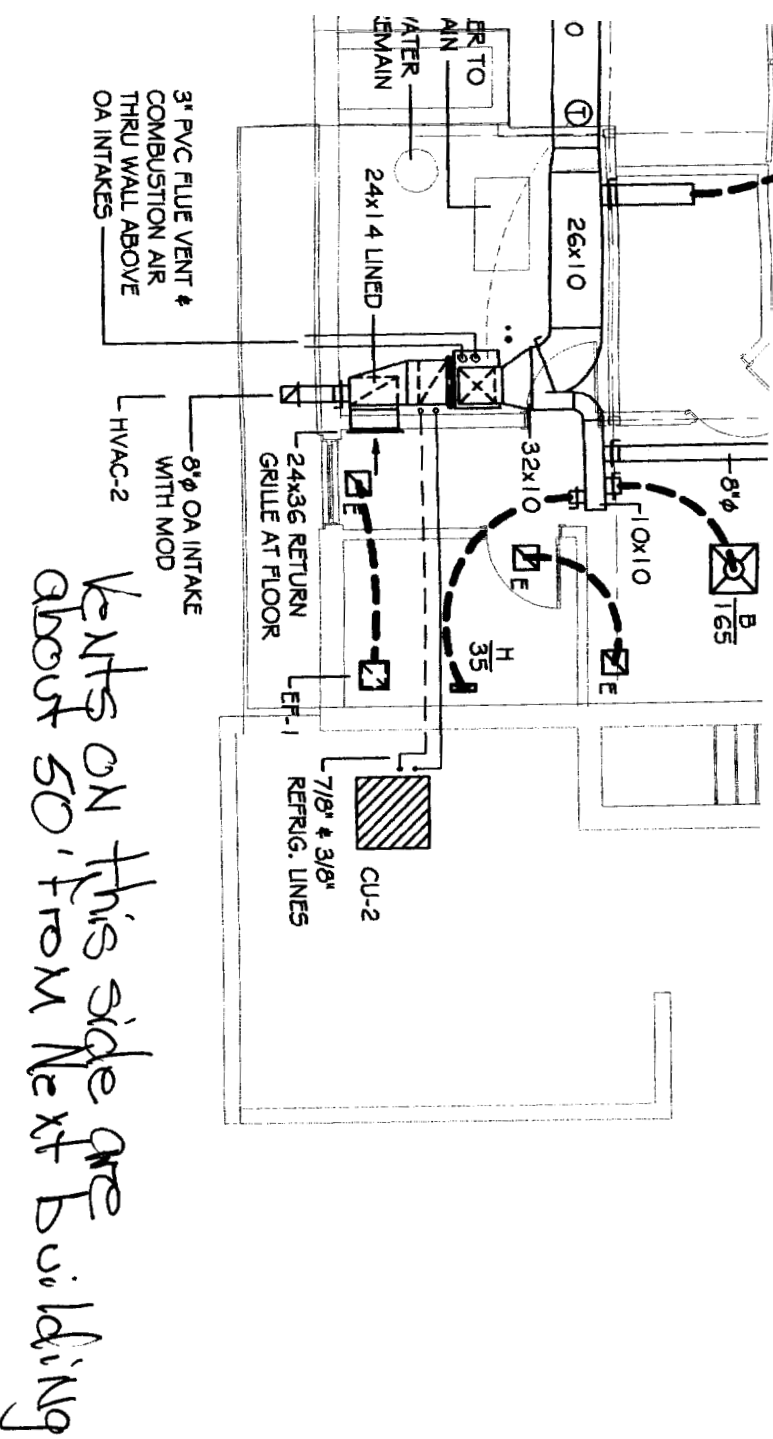
Vents for Furnaces are about 75'
From Next Building



LAN &

ISSUE:
PRELIMINARY SET
12-15-04

**JOHNSON
JORDAN &**
MECHANICAL CONTRACTORS
18MUSSEY ROAD
SCARBOROUGH, MAINE 04074
TEL. (207) 883-8345 * FAX (207) 883-8619



FLOOR PLAN

SCALE 1/8"=1'-0"

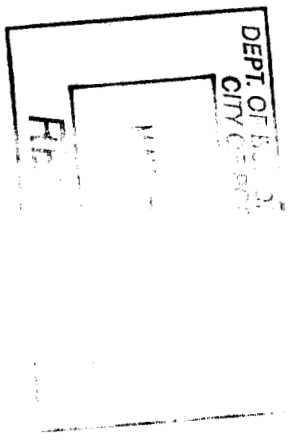
LY # OA DUCTWORK INSULATED WITH 1-1/2" SS WRAP.
 HVAC UNIT CONDENSATE DRAINS TO INDIRECT WASTE.
 N OF CONDENSING UNITS TO BE NED IN FIELD.
 EXISTING HVAC SYSTEMS, DUCTWORK, ETC. DOMESTIC WATER HEATER, AND HYDRONIC REMAIN SERVING THE UPPER FLOOR.

THINGS TO DO

COND UNIT LOCATIONS

EF-2 ON

LIGHT CIRCUIT



| | | | | |
|---------------------------------------|--|----------------------|-----------------|--|
| SHEET # M-1 OF 3 | PROJECT: MPX MAINE PRINTING PORTLAND, MAINE | DRAWN: MPJ | CHECKED: MPJ | DRAWINGS THIS SHEET: MECHANICAL P DETAILS |
| | | SCALE: 1/8"=1'-0" | | |
| | | DATE: 12-15-04 | | |
| | | PROJECT# 04242 | | |