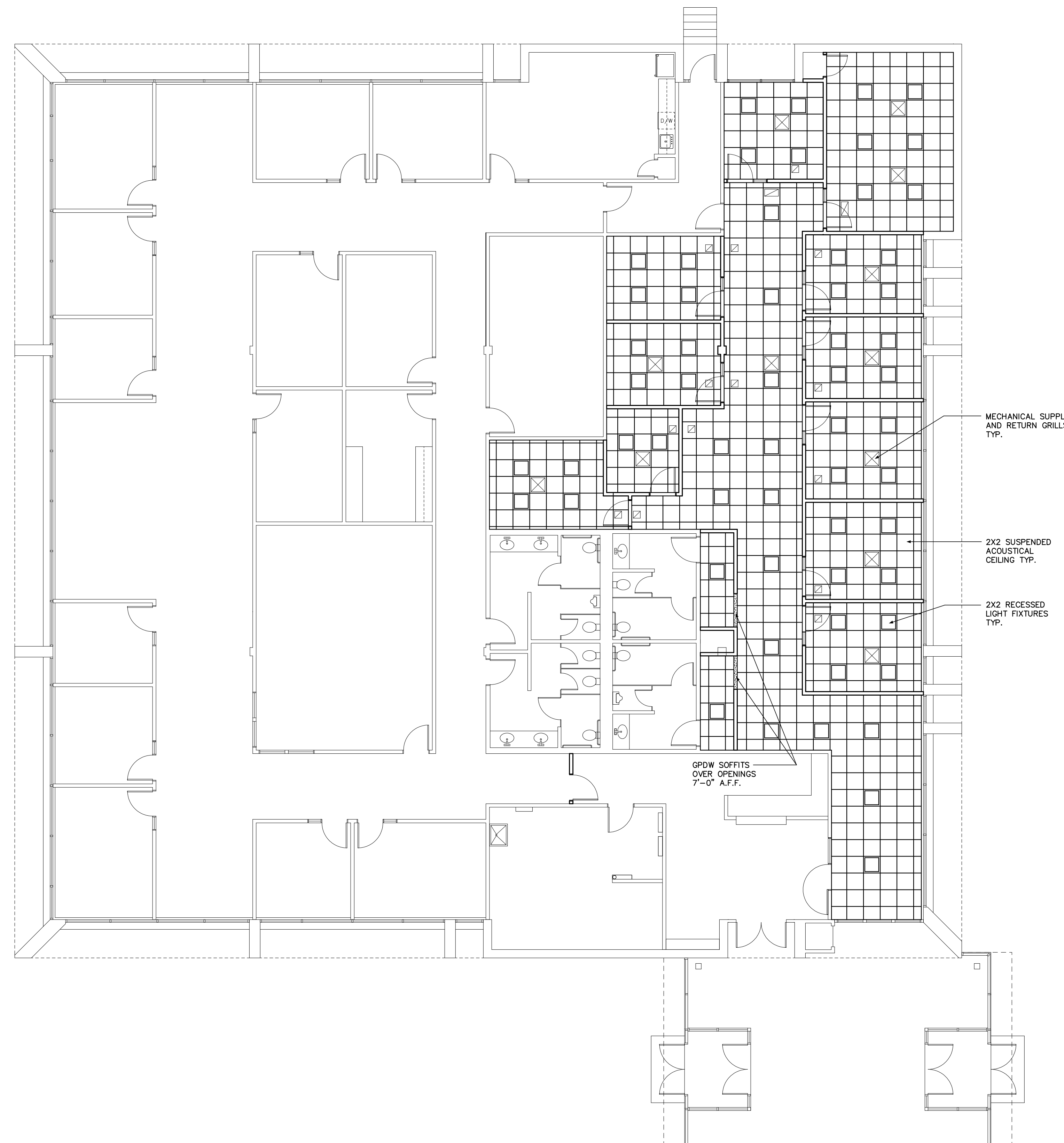


Project Title  
**CROSS INSURANCE RENOVATIONS**  
 2331 CONGRESS STREET  
 PORTLAND, MAINE

- GENERAL NOTES**
- REFER TO ROOM FINISH SCHEDULES ON SHTS A61.1, A61.2 & A61.3 FOR CEILING HEIGHTS UNLESS NOTED OTHERWISE.
  - REFER TO MECHANICAL & ELECTRICAL DRAWINGS FOR ADDITIONAL INFORMATION AND CO-ORDINATION.
  - CONSTRUCT 5/8" FIRE RATED BOXES BEHIND ANY RECESSED LIGHTS OR OTHER RECESSED ELEMENTS TO MAINTAIN RCT FIRE RATINGS.
  - PROVIDE ACCESS PANELS WHERE NECESSARY TO ACCESS MECH. AND PLUMBING ITEMS (SHUT OFF VALVES, ETC.). ACCESS PANELS SHALL BE FIRE RATED WHERE PENETRATING FIRE RATED BARRIERS.



08 - 26 - 16	ISSUED FOR PERMIT
Mark	Date
	Description
Issue Dates	

Drawing Title

**CEILING PLAN**

Drawing Number

**A70.1**