

3/29/13

THE GERBER COMPANY
4 GRAY ROAD
FALMOUTH, ME 04105

CROSS INSURANCE
2331 CONGRESS STREET
PORTLAND, MAINE

PLUMBING
HW & CW PIPING

P-2

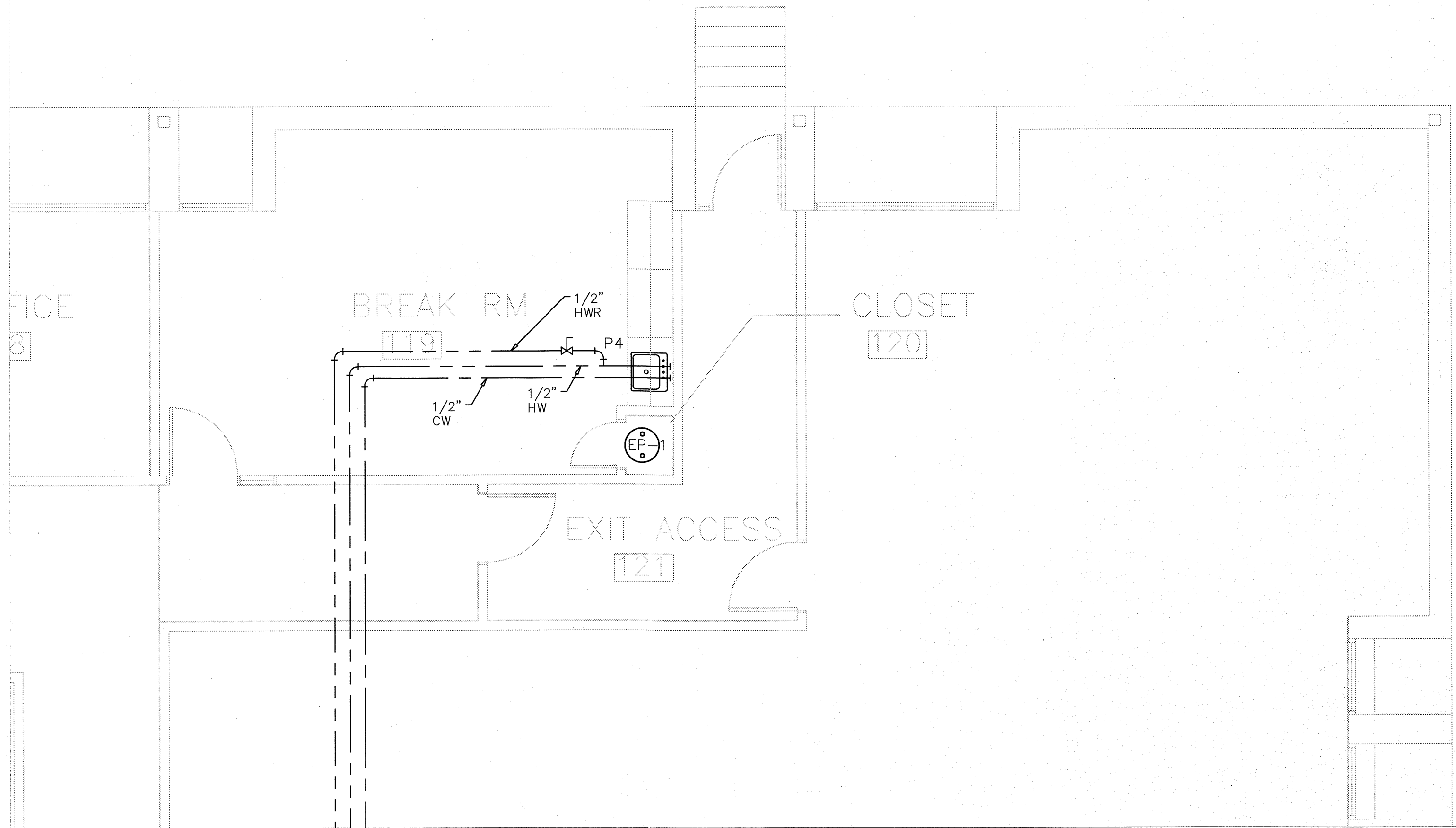
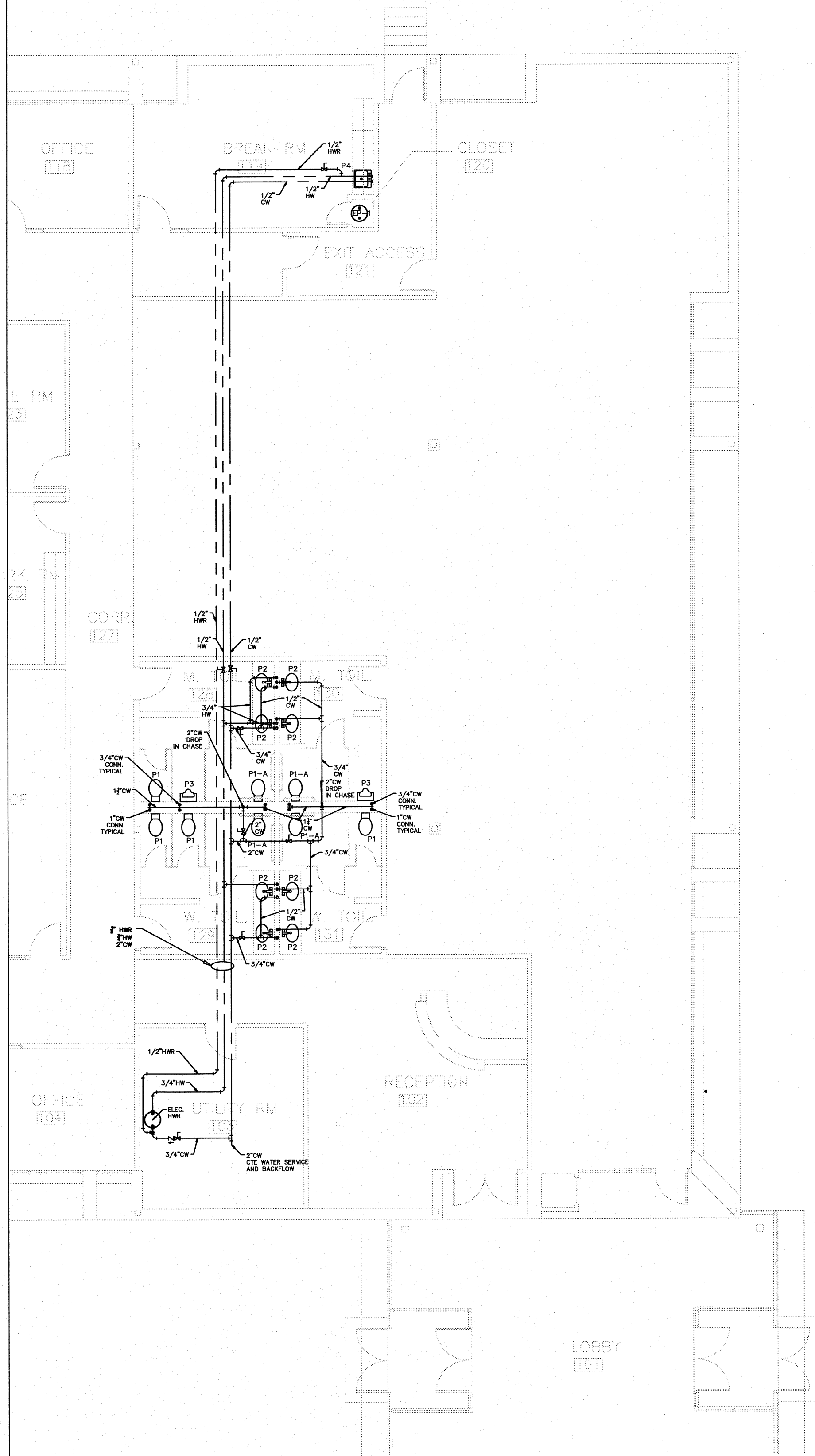
WATER HEATER / PUMP SCHEDULE					
TAG	ELEMENT	VOLTS/PHASE	STORAGE	GPM	REMARKS
EMH-1	30W	208	1	20 GAL	LOCKDOWN LEASERS
HMCP-1		120	1	1.75	GRANDKIDS UPTO-HBS #110

PLUMBING SCHEDULE			
TAG	FIXTURE	MANUFACTURER	REMARKS
P-1	WATER CLOSET WALL MOUNT	AMERICAN STANDARD	AS227901.020 - 17" RM
P-1A	ADA WATER CLOSET WALL MOUNT	AMERICAN STANDARD	AS227901.020 - 17" RM
P-2	ADA LAVATORY WALL MOUNT	AMERICAN STANDARD	AS247028.020
P-3	URINAL	AMERICAN STANDARD	AS250001.020
P-4	SS SINGLE BONE DRN	ELKAY GE251	FAUCET AS200001.002 (BONDED BRASS) 1/2" CW
EP-1	ELECTOR PUMP	LIBERTY PUMP	PROVIDE WITH 1" CHECK VALVE AND UNFLO BACKFLOW
FPMB	FROST FREE HOSE BS	EXISTING TO REMAIN	EXISTING TO REMAIN
FD	FLOOR DRAIN	WATTE EPOXY COATED	2" FIBER GLASS TRAP COVER PPP PRESS TRAP PRIMER

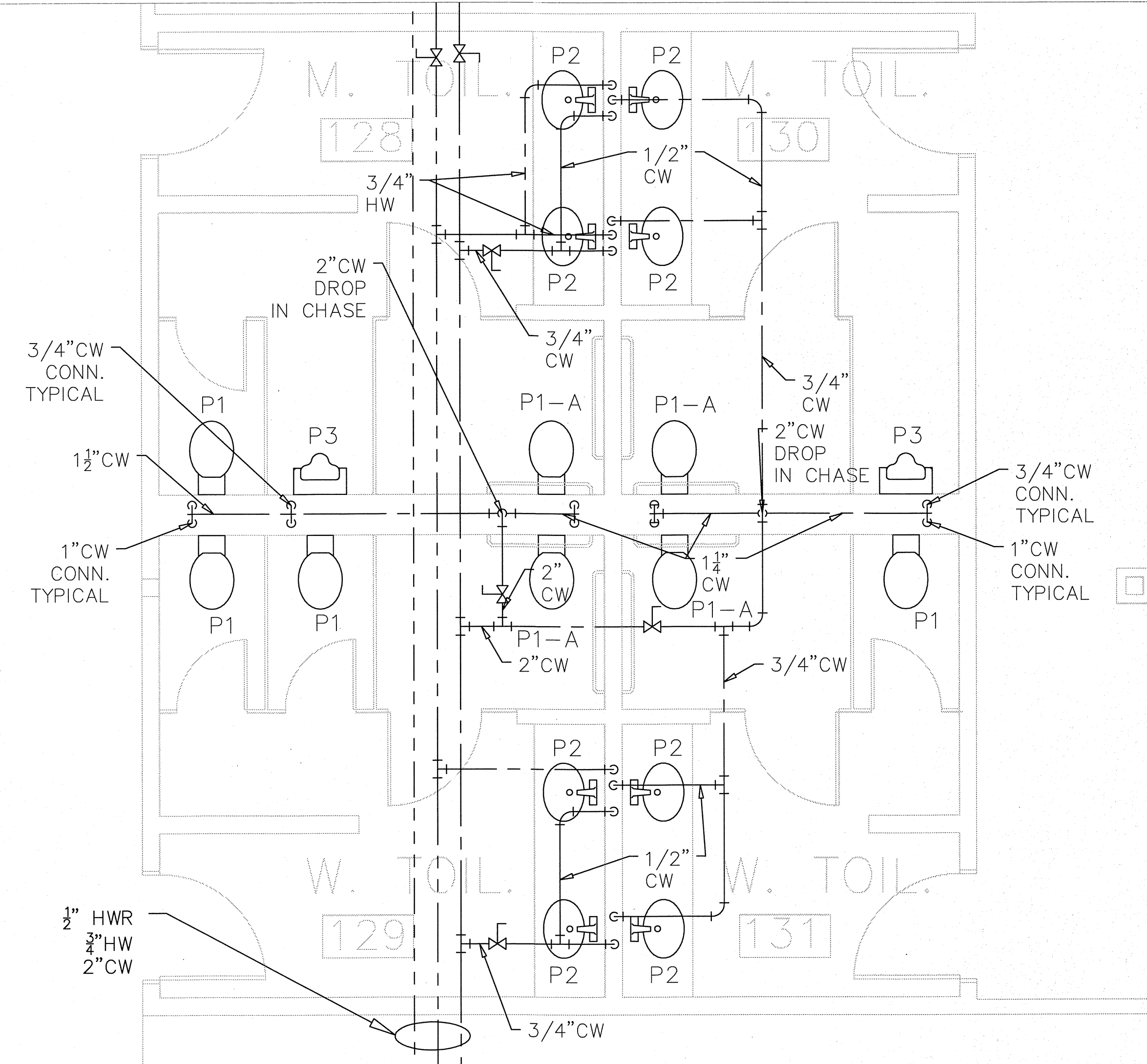
PLUMBING FIXTURE SCHEDULE						
TAG	FIXTURE	W	V	CW	HW	REMARKS
P-1	WATER CLOSET WALL MOUNT	4"	2"	1"		17" RM HEIGHT
P-1A	ADA WATER CLOSET WALL MOUNT	4"	2"	1"		17" RM HEIGHT
P-2	ADA LAVATORY WALL MOUNT	2"	1 1/2"	1 1/2"	1 1/2"	COUNTER MTD. W/REST BLADE GOOSENECK FAUCET
P-3	URINAL	2"	1 1/2"	3 1/4"		
P-4	SS SINGLE BONE DRN	2"	1 1/2"	1 1/2"	1 1/2"	AMERICAN STANDARD AS242501.020

PLUMBING NOTES

1. ALL WORK IS TO BE DONE IN ACCORDANCE WITH LOCAL AND STATE CODES.
2. THE PROPOSED PROJECT WILL UTILIZE EXISTING SANITARY VENT AND WATER.
3. THE CONTRACTOR SHALL VERIFY W/ THE ARCHITECT THE INSTALLATION OF THE EXISTING 4" SANITARY BEFORE PROCEEDING WITH LAYOUT.
4. ALL WASTE PIPING SHALL BE SLOPED A MINIMUM OF 1/4" PER FOOT.
5. THE CONTRACTOR SHALL COORDINATE WORK WITH THE MECHANICAL CONTRACTOR AND THE HVAC SYSTEM REQUIREMENT.



SCALE: 1/4" = 1'-0" - HW & CW DETAIL PIPING



SCALE: 3/8" = 1'-0" - HW & CW DETAIL PIPING

PROPERTY OF THE GERBER COMPANY
FOR SOLE USE OF GERBER COMPANY PERSONNEL ONLY

SCALE: 1/8" = 1'-0"