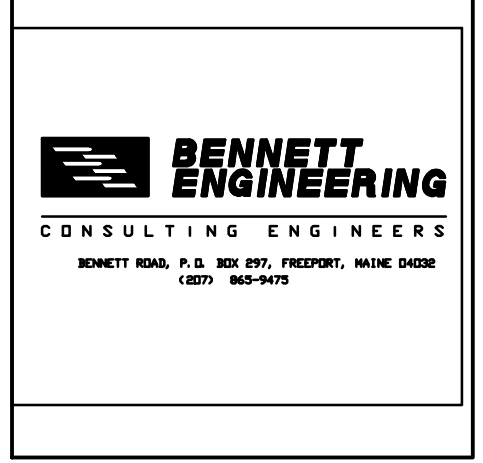
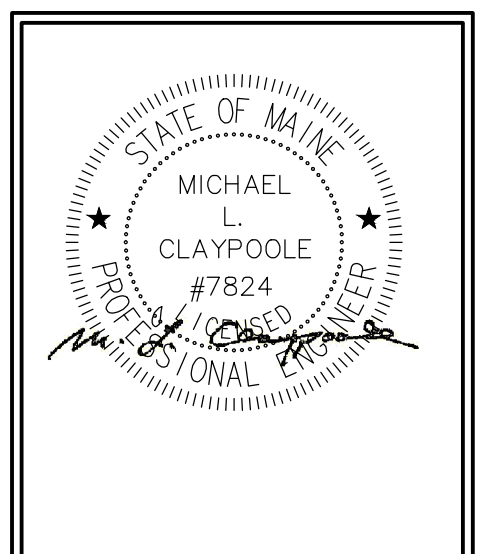
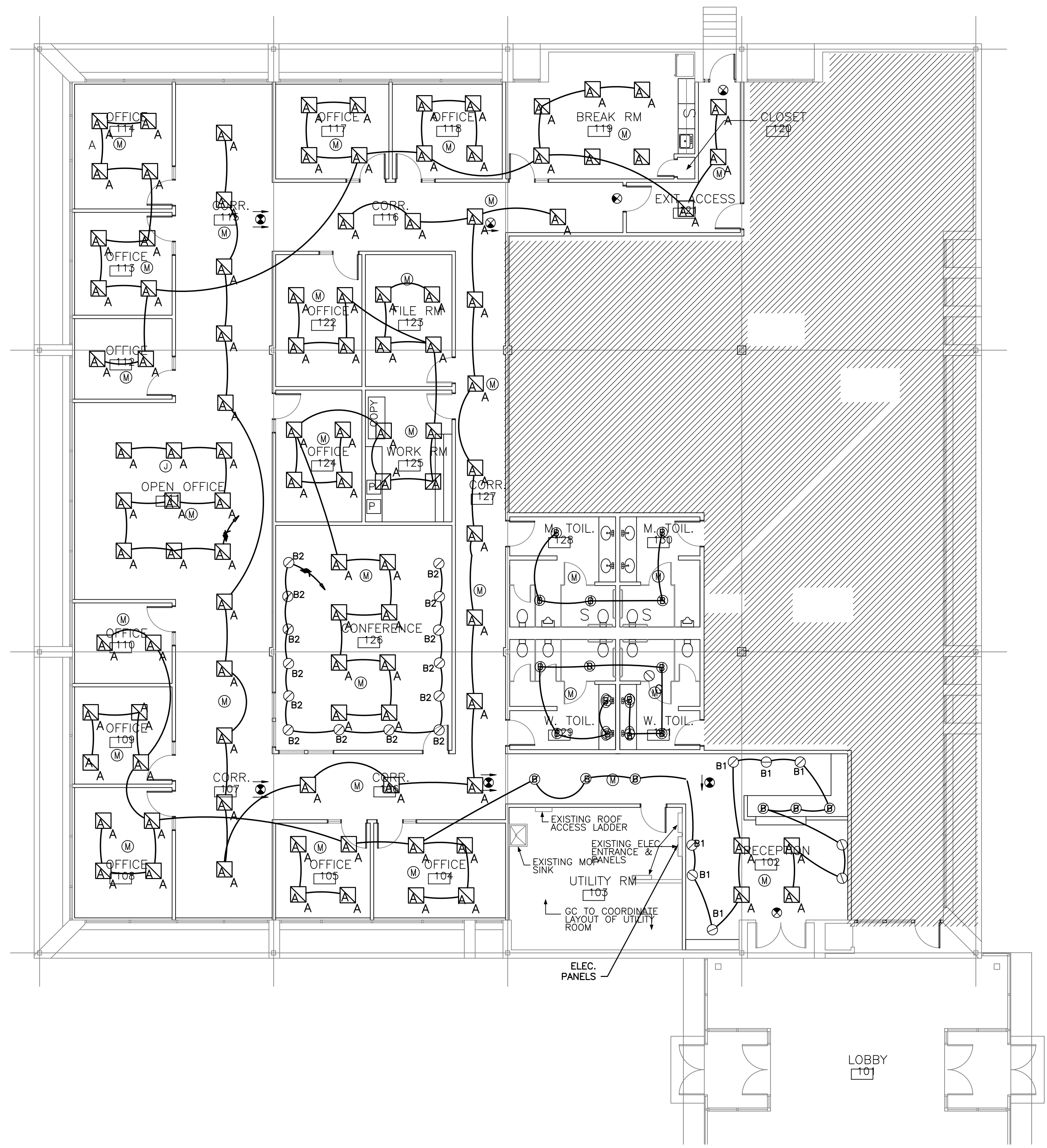


NOTES:  
 1) REUSE EXISTING CIRCUITING FOR NEW LAYOUT  
 2) FINAL PANEL SCHEDULES WILL BE DONE AT COMPLETION

A - 2X2 LED INDIRECT  
 B - LED DOWNLIGHT  
 B1 - LED WALL WASH  
 B2 - DIMMABLE LED DOWNLIGHT



**BH Milliken**  
 ELECTRICAL CONTRACTORS  
 175 ANDERSON STREET  
 PORTLAND, MAINE 04101  
 PHONE 879-1877  
 FAX: 774-1492

CROSS INS.  
 CONGRESS STREET  
 PORTLAND, MAINE

TITLE	
LIGHTING	
SCALE:	SCALE
DATE:	3-29-13
SHEET	
<b>E300</b>	

FLOOR PLAN  
 1/8" = 1'-0"