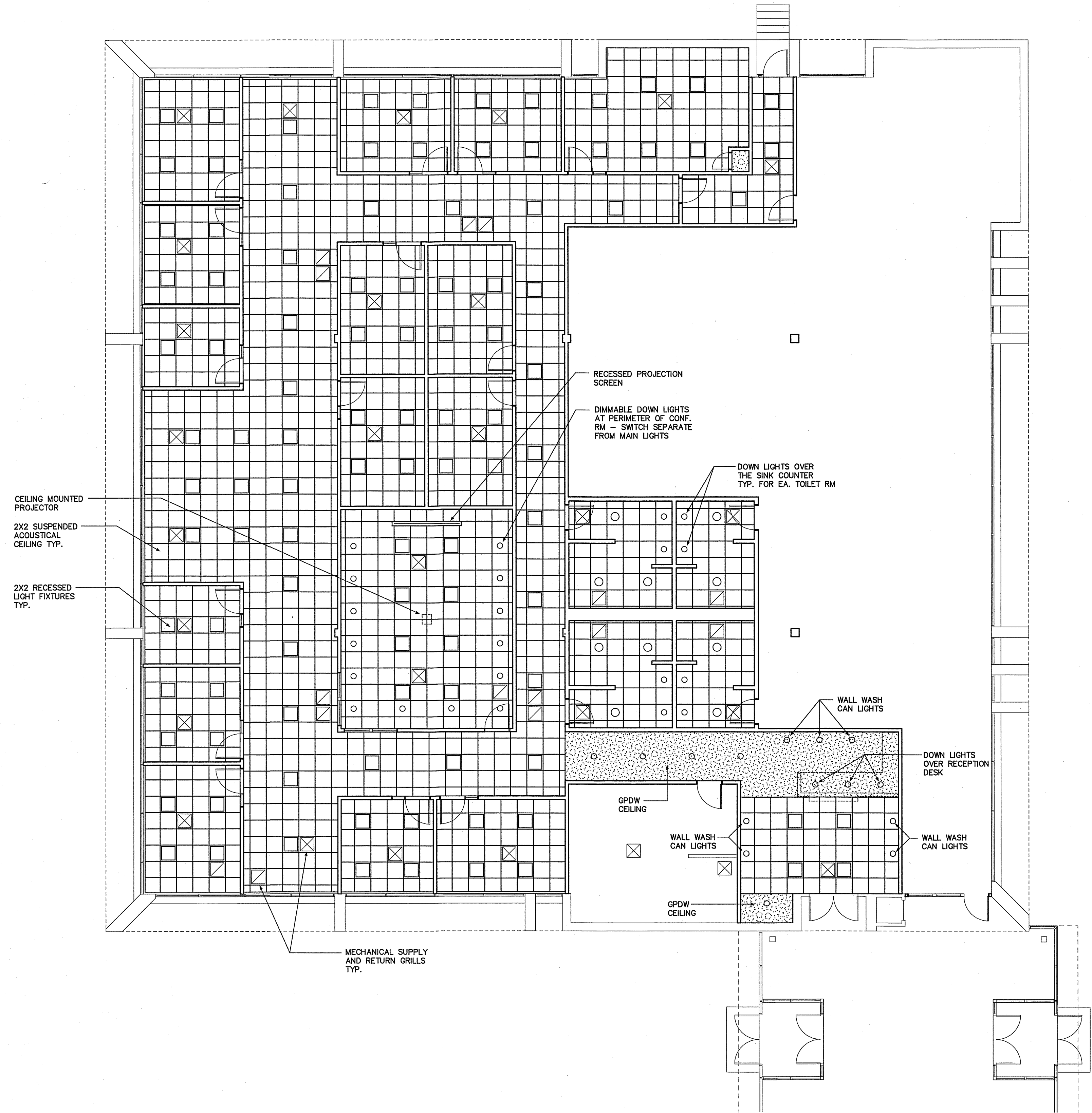


Project Title
**CROSS
 INSURANCE
 RENOVATIONS**
 2331 CONGRESS STREET
 Portland, Maine

- GENERAL NOTES**
1. REFER TO ROOM FINISH SCHEDULES ON SHITS A61.1, A61.2 & A61.3 FOR CEILING HEIGHTS UNLESS NOTED OTHERWISE.
 2. REFER TO MECHANICAL & ELECTRICAL DRAWINGS FOR ADDITIONAL INFORMATION AND CO-ORDINATION.
 3. CONSTRUCT 5/8" FIRE RATED BOXES BEHIND ANY RECESSED LIGHTS OR OTHER RECESSED ELEMENTS TO MAINTAIN REQ'T FIRE RATINGS.
 4. PROVIDE ACCESS PANELS WHERE NECESSARY TO ACCESS MECH. AND PLUMBING ITEMS (SHUT OFF VALVES, ETC.). ACCESS PANELS SHALL BE FIRE RATED WHERE PENETRATING FIRE RATED BARRIERS.



03-29-13	ISSUED FOR BID
Mark	Date
	Description
Issue Dates	

Drawing Title

**REFLECTIVE
 CEILING PLAN**

Drawing Number
A70.1