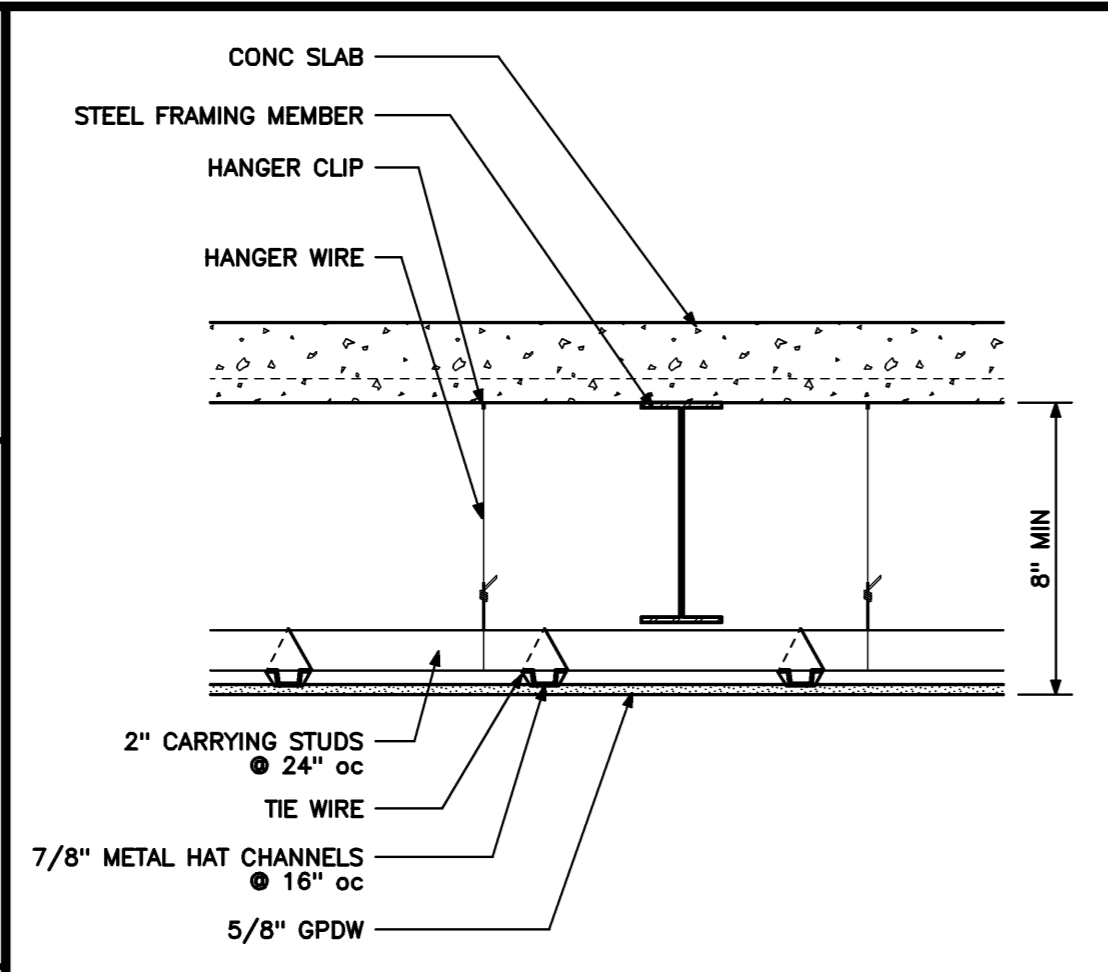
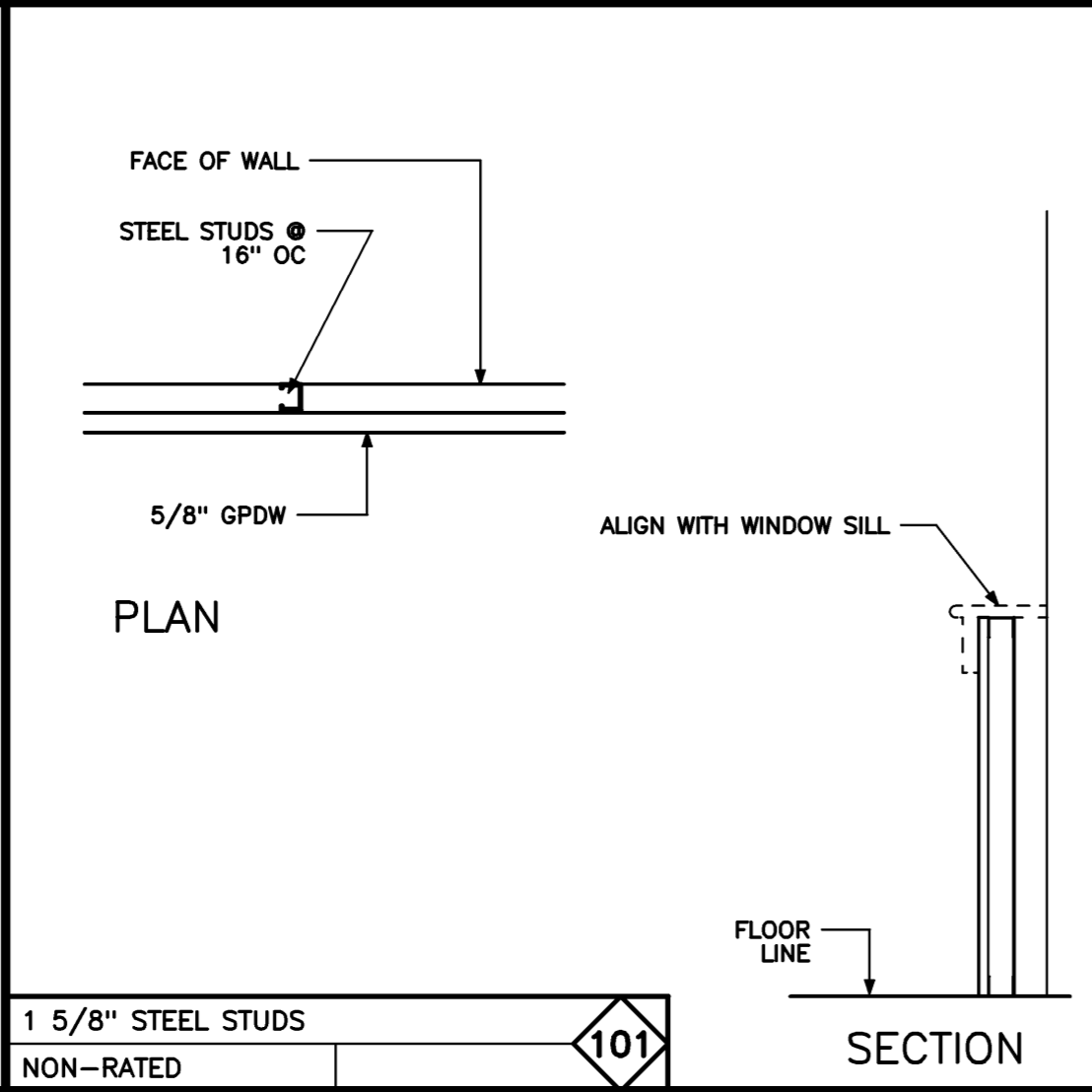


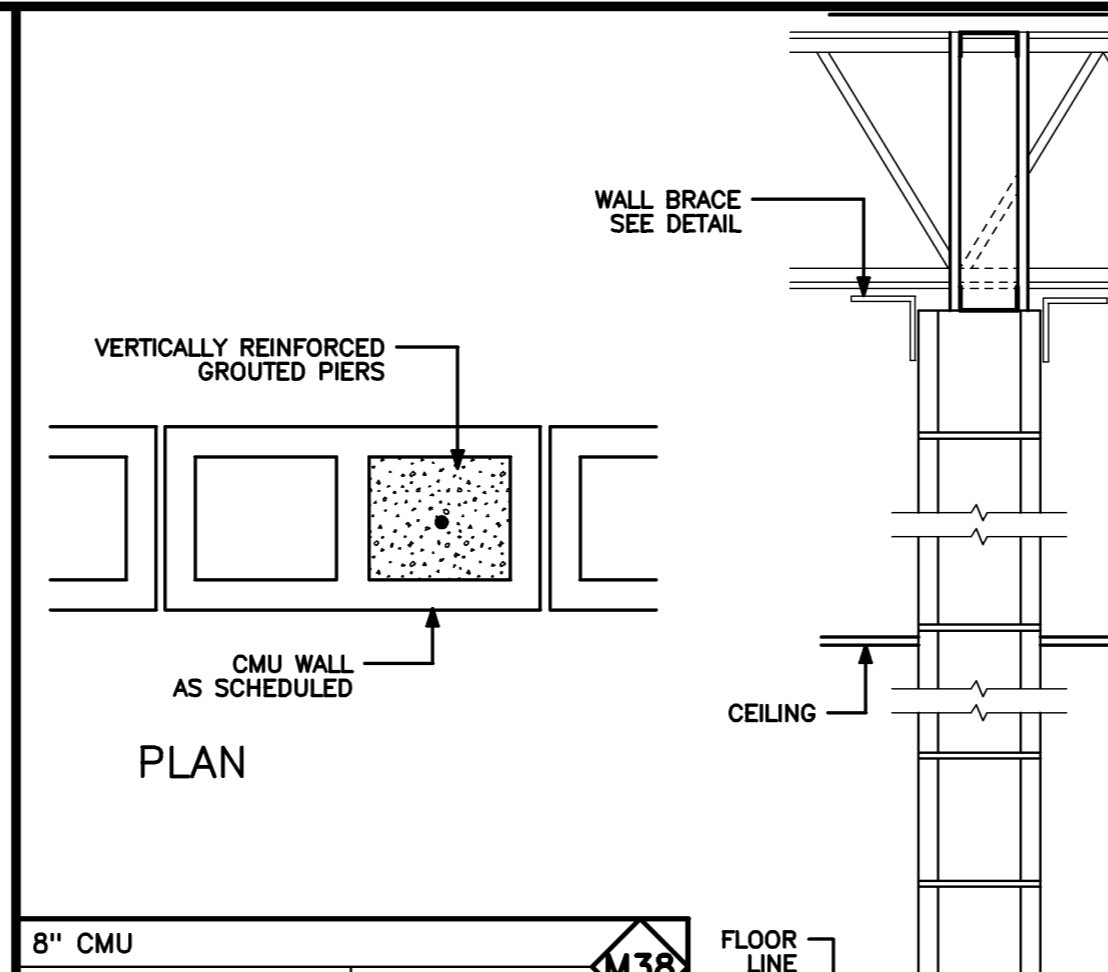
3 5/8" STEEL STUDS W/ 3 1/2" BATT INS	NON-RATED	103
---------------------------------------	-----------	-----



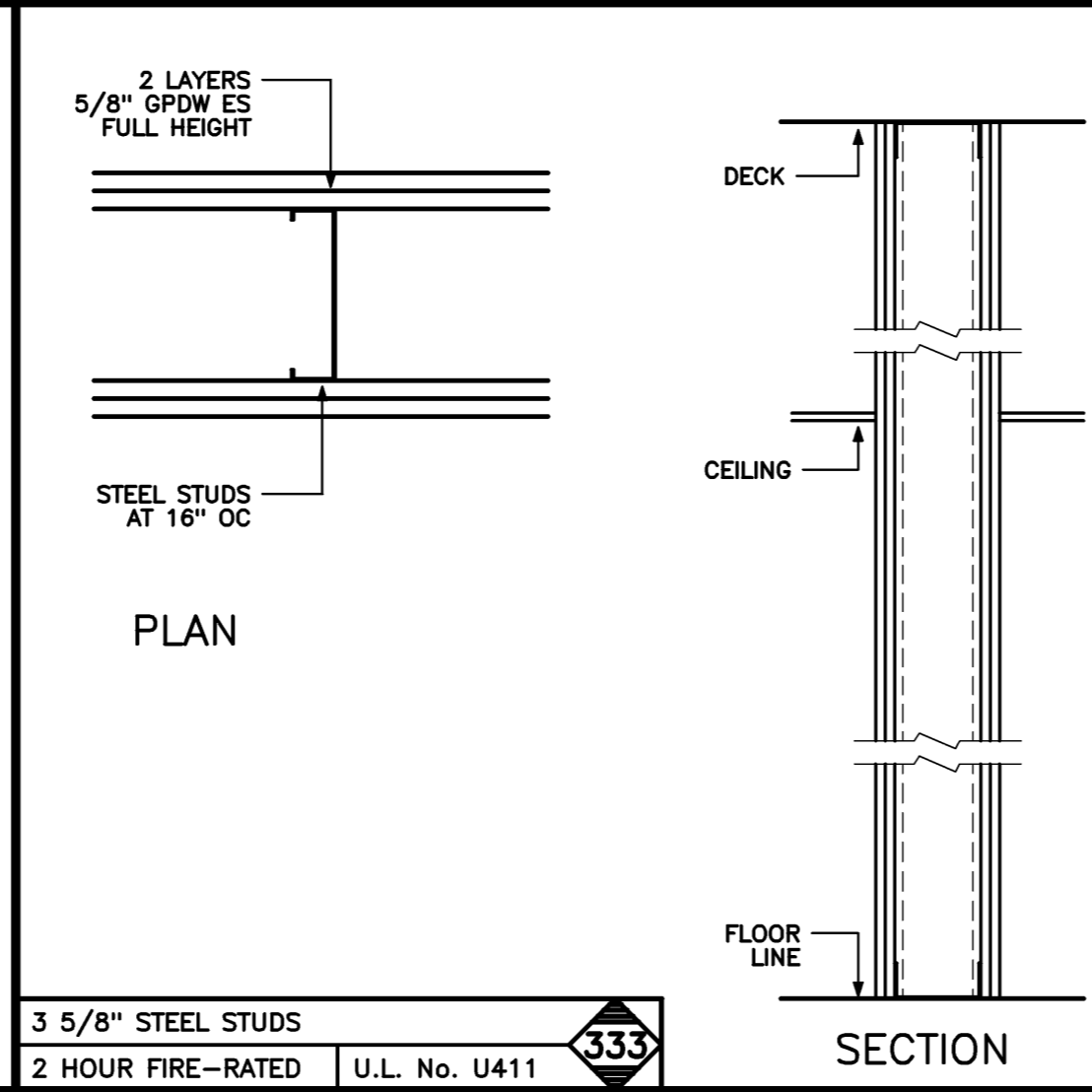
STEEL STUD CEILING ASSEMBLY	1 HOUR FIRE-RATED	U.L. No. G531
-----------------------------	-------------------	---------------



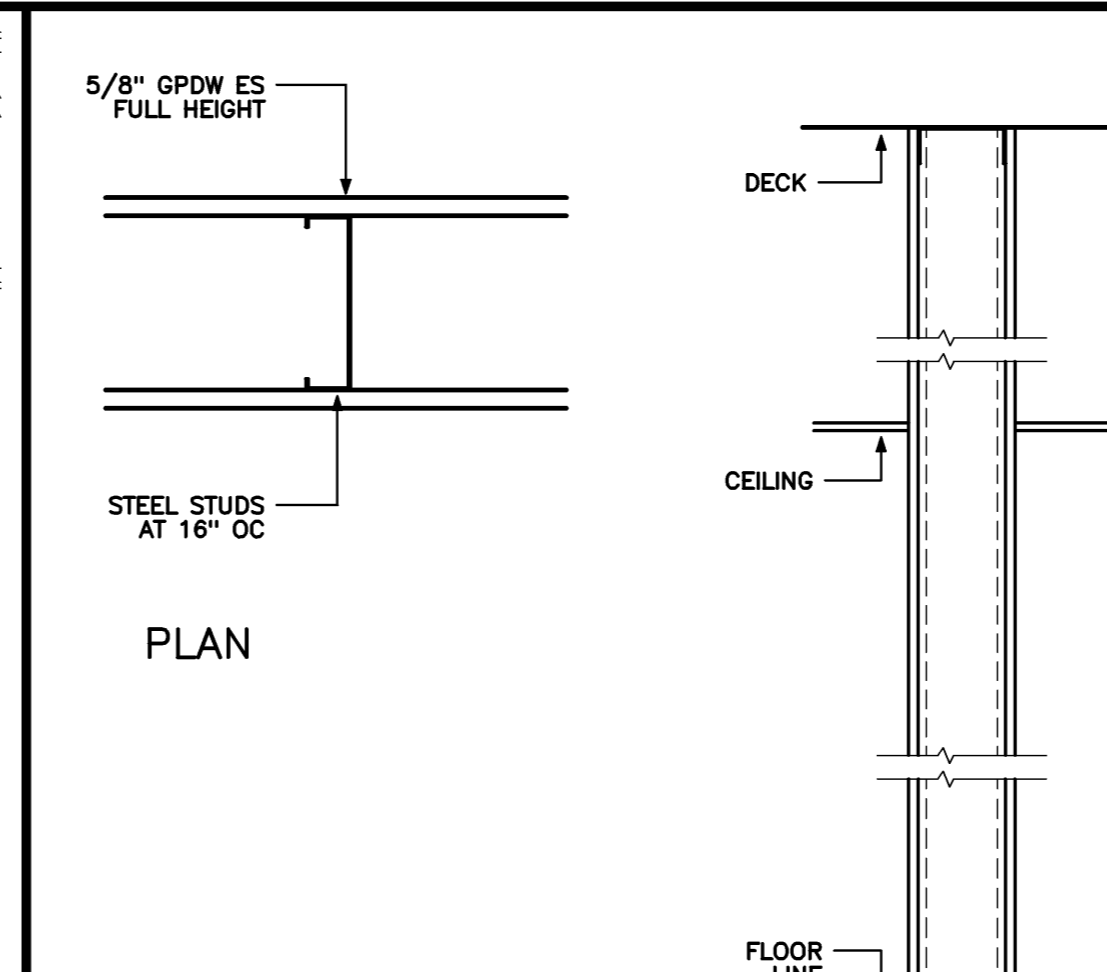
1 5/8" STEEL STUDS	NON-RATED	101
--------------------	-----------	-----



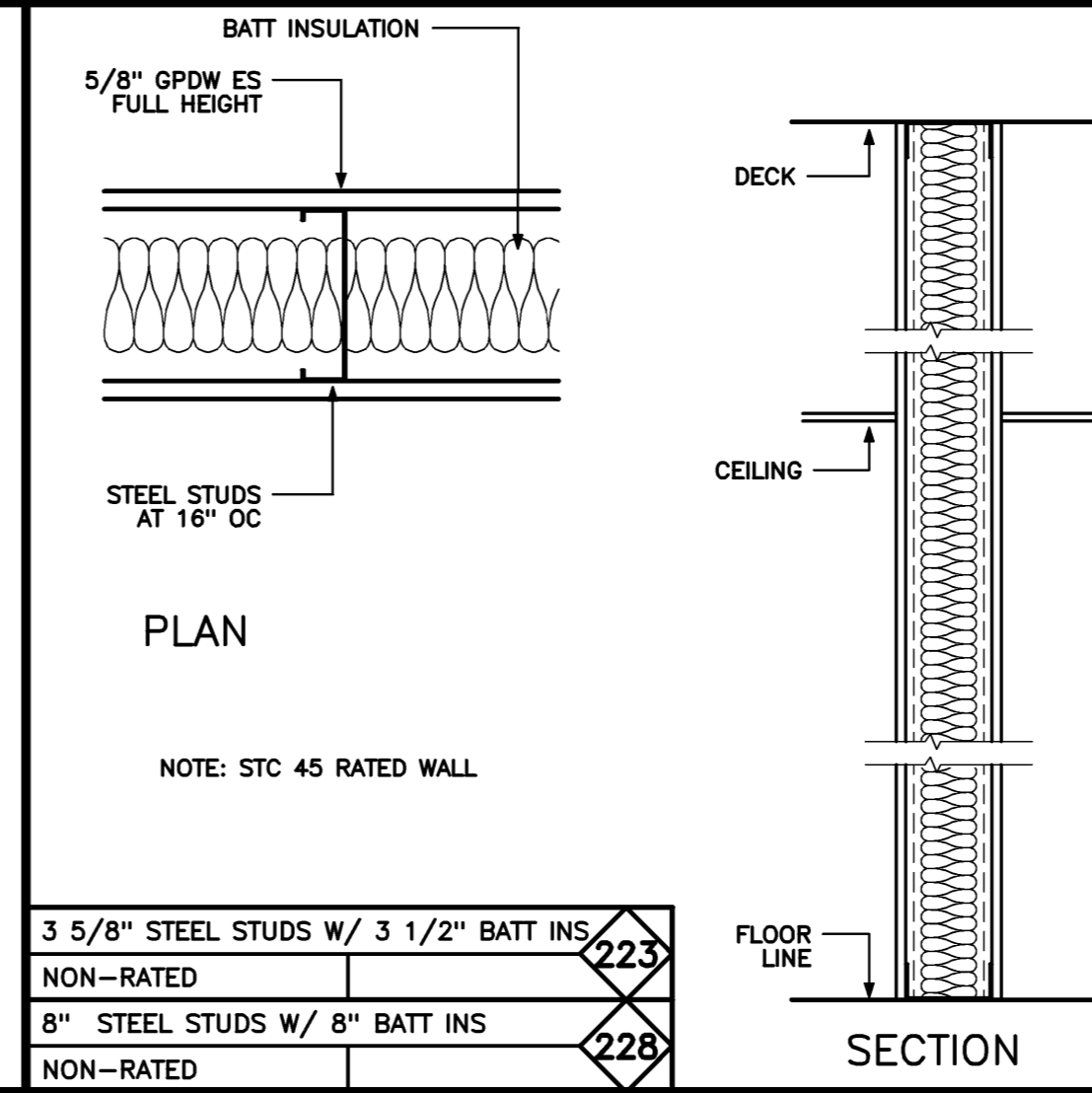
8" CMU	NON-RATED	M38
8" CMU	NON-RATED	M38



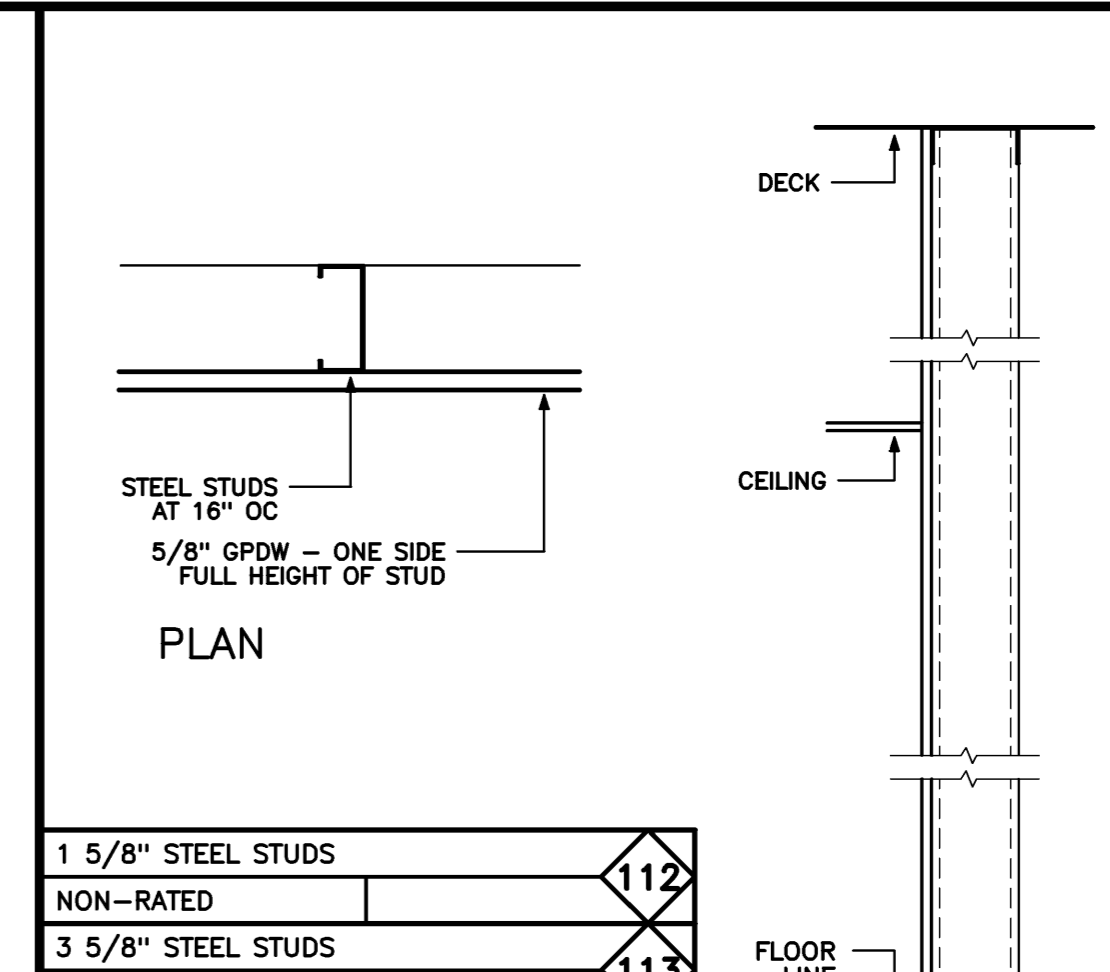
3 5/8" STEEL STUDS	2 HOUR FIRE-RATED	U.L. No. U411	333
--------------------	-------------------	---------------	-----



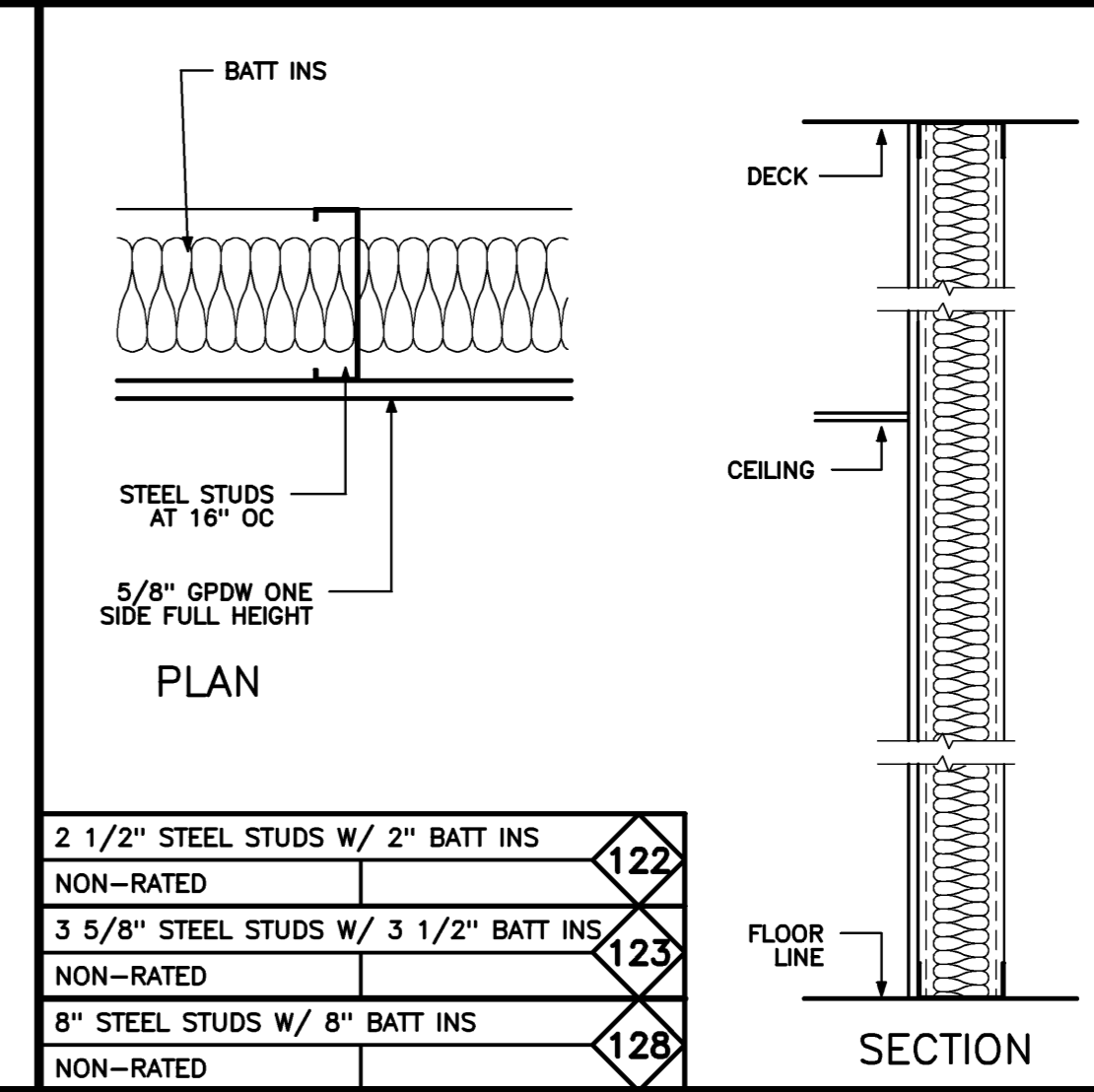
5/8" GPDW ES FULL HEIGHT	NON-RATED	213
--------------------------	-----------	-----



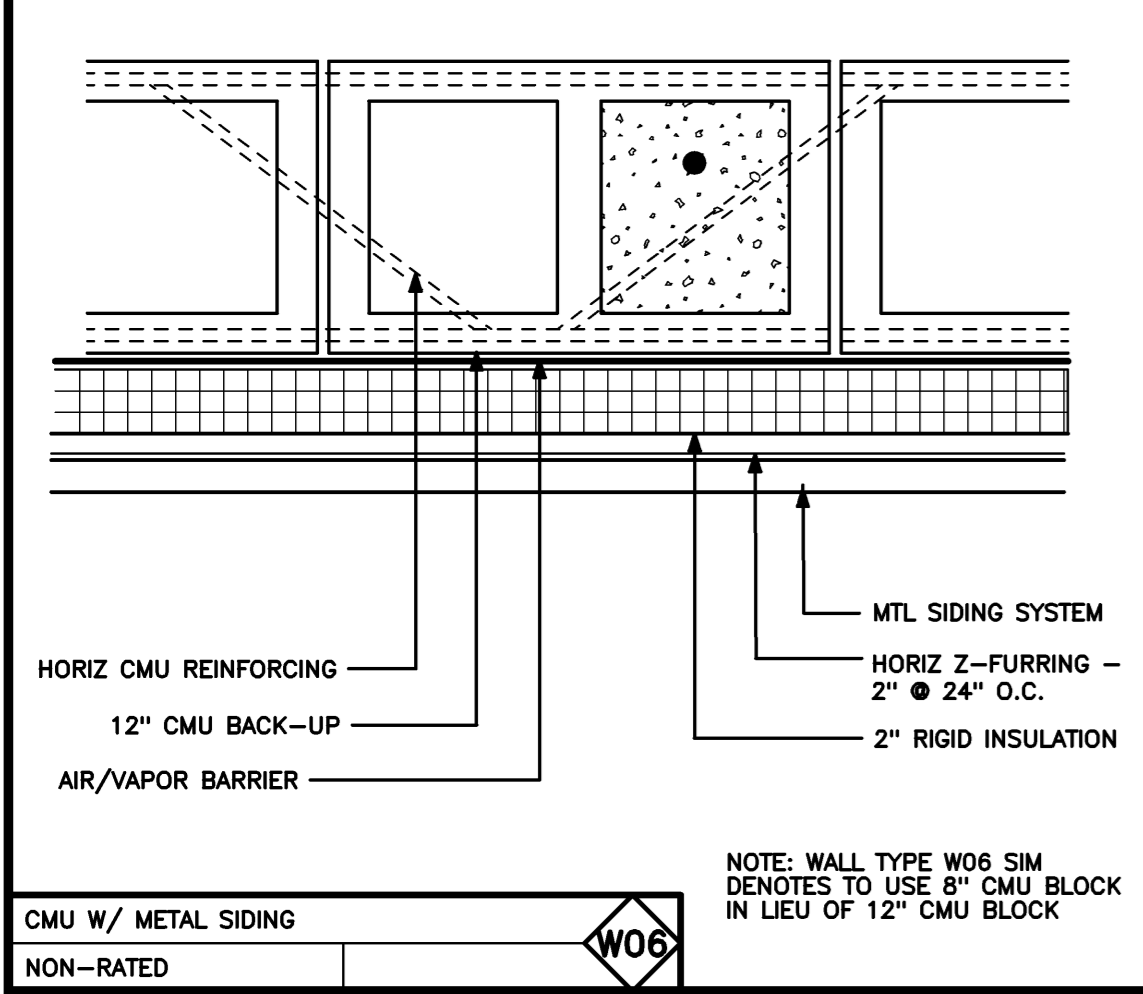
3 5/8" STEEL STUDS W/ 3 1/2" BATT INS	NON-RATED	223
8" STEEL STUDS W/ 8" BATT INS	NON-RATED	228



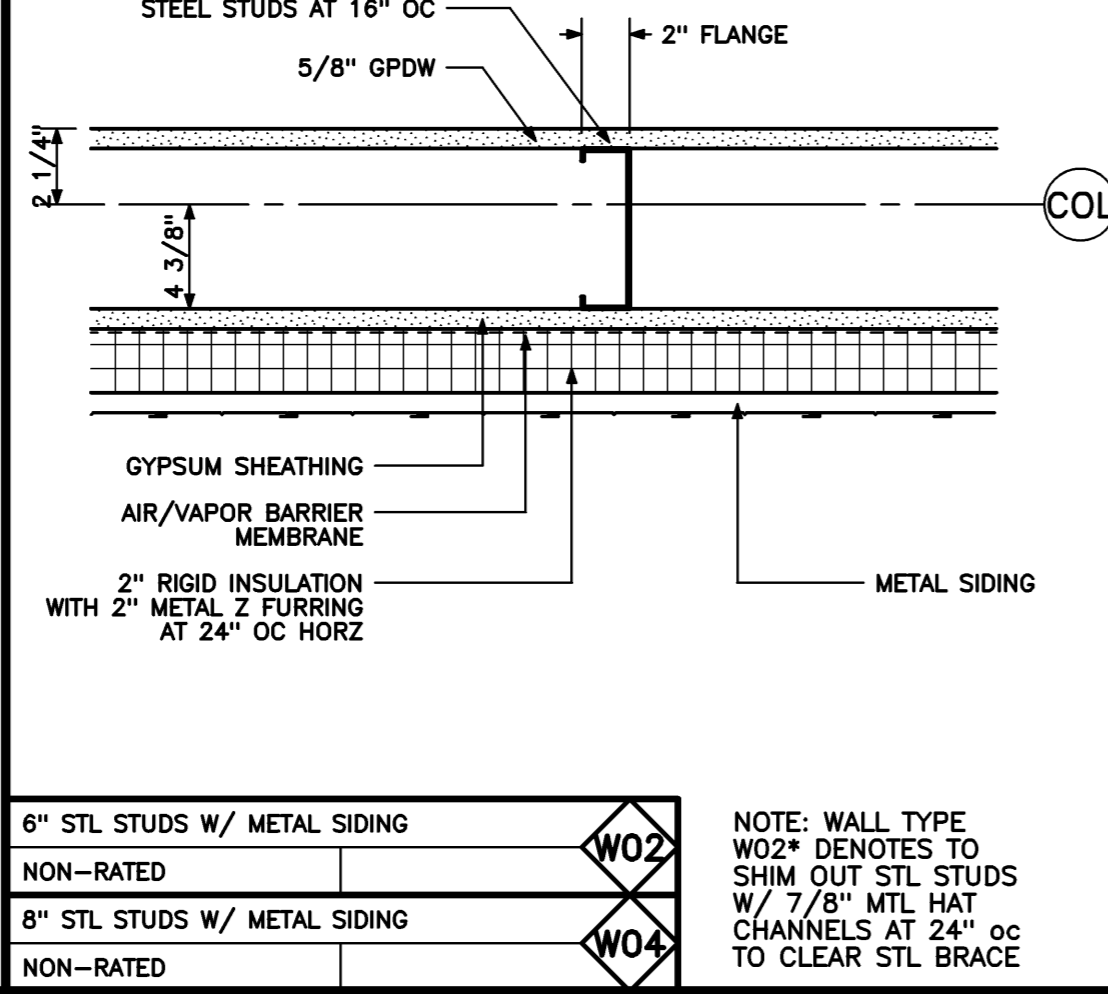
1 5/8" STEEL STUDS	NON-RATED	112
3 5/8" STEEL STUDS	NON-RATED	113
6" STEEL STUDS	NON-RATED	116



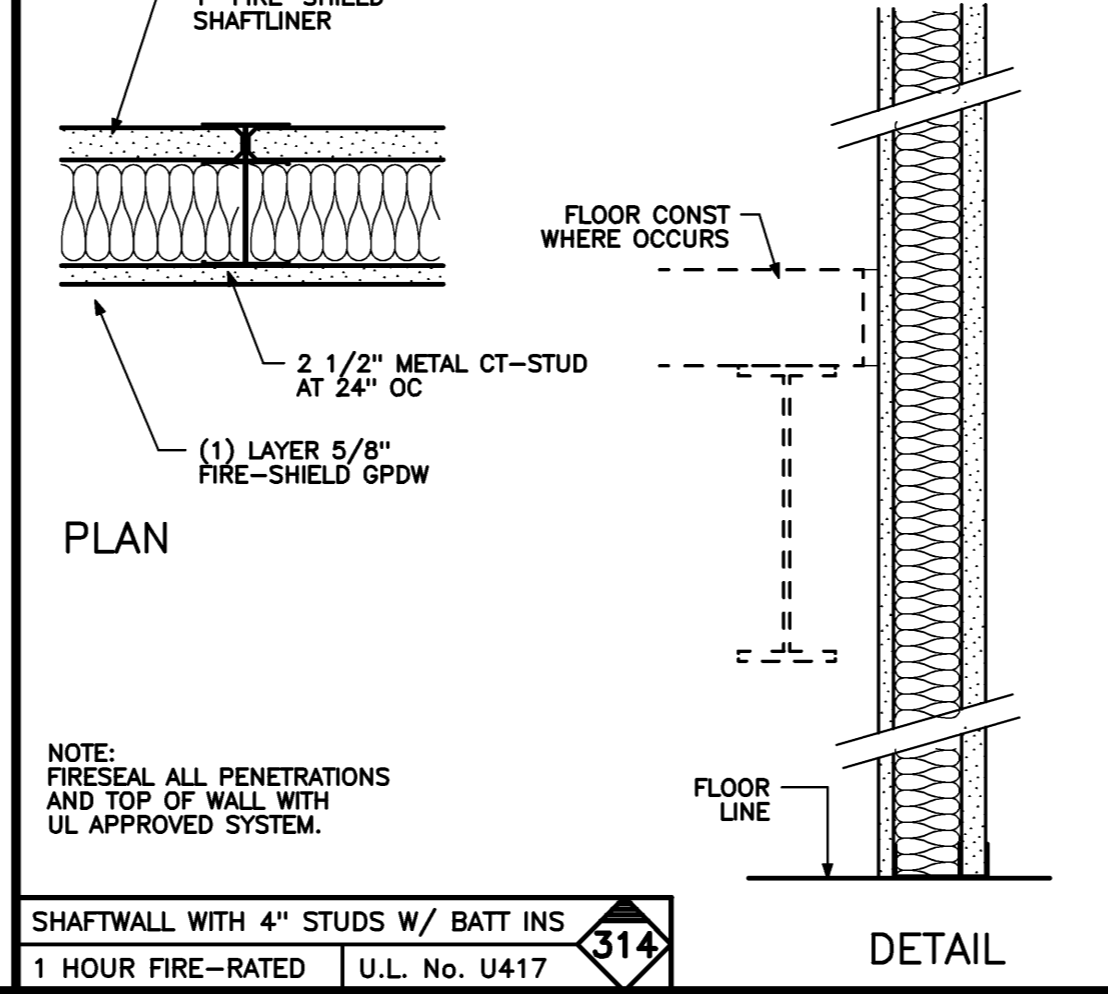
2 1/2" STEEL STUDS W/ 2" BATT INS	NON-RATED	122
3 5/8" STEEL STUDS W/ 3 1/2" BATT INS	NON-RATED	123
8" STEEL STUDS W/ 8" BATT INS	NON-RATED	128



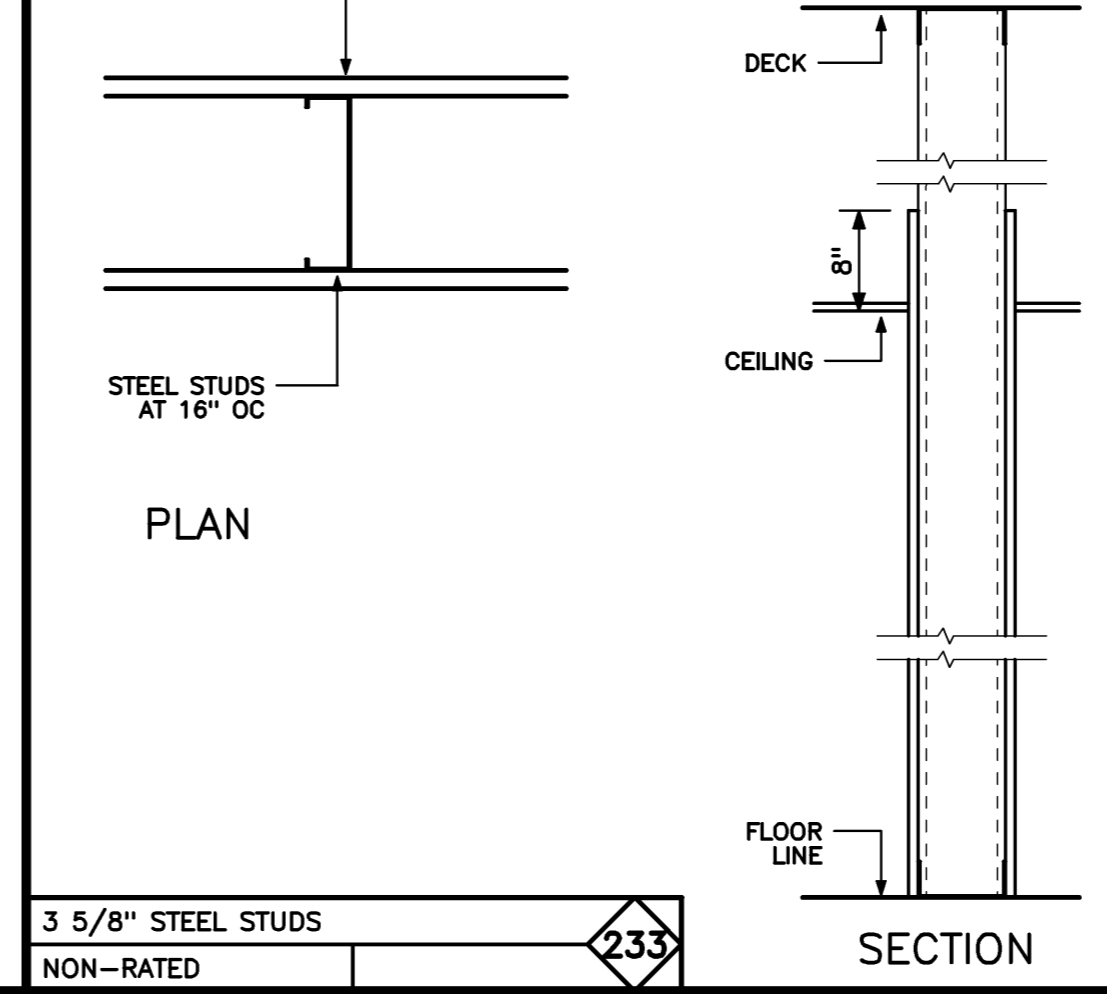
CMU W/ METAL SIDING	NON-RATED	W06
---------------------	-----------	-----



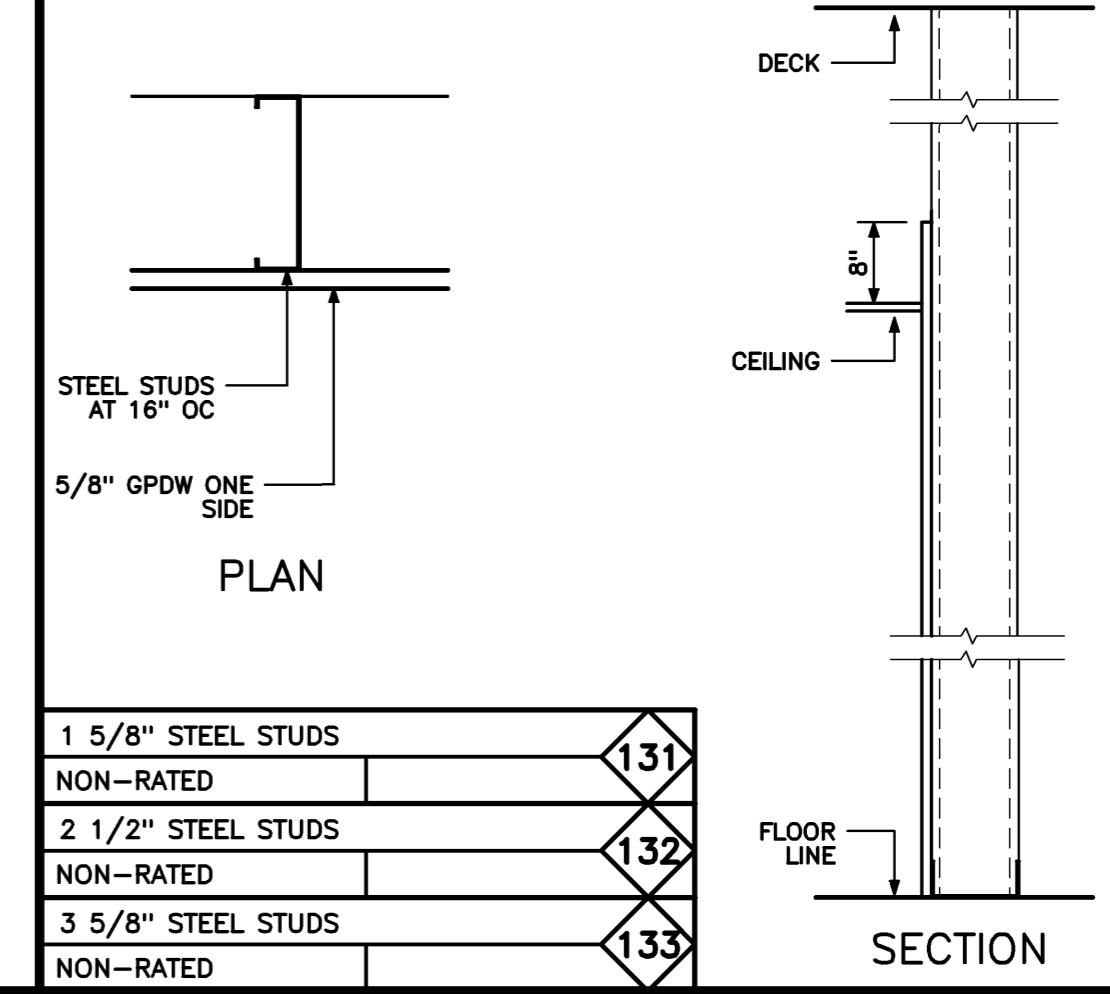
6" STL STUDS W/ METAL SIDING	NON-RATED	W02
8" STL STUDS W/ METAL SIDING	NON-RATED	W04



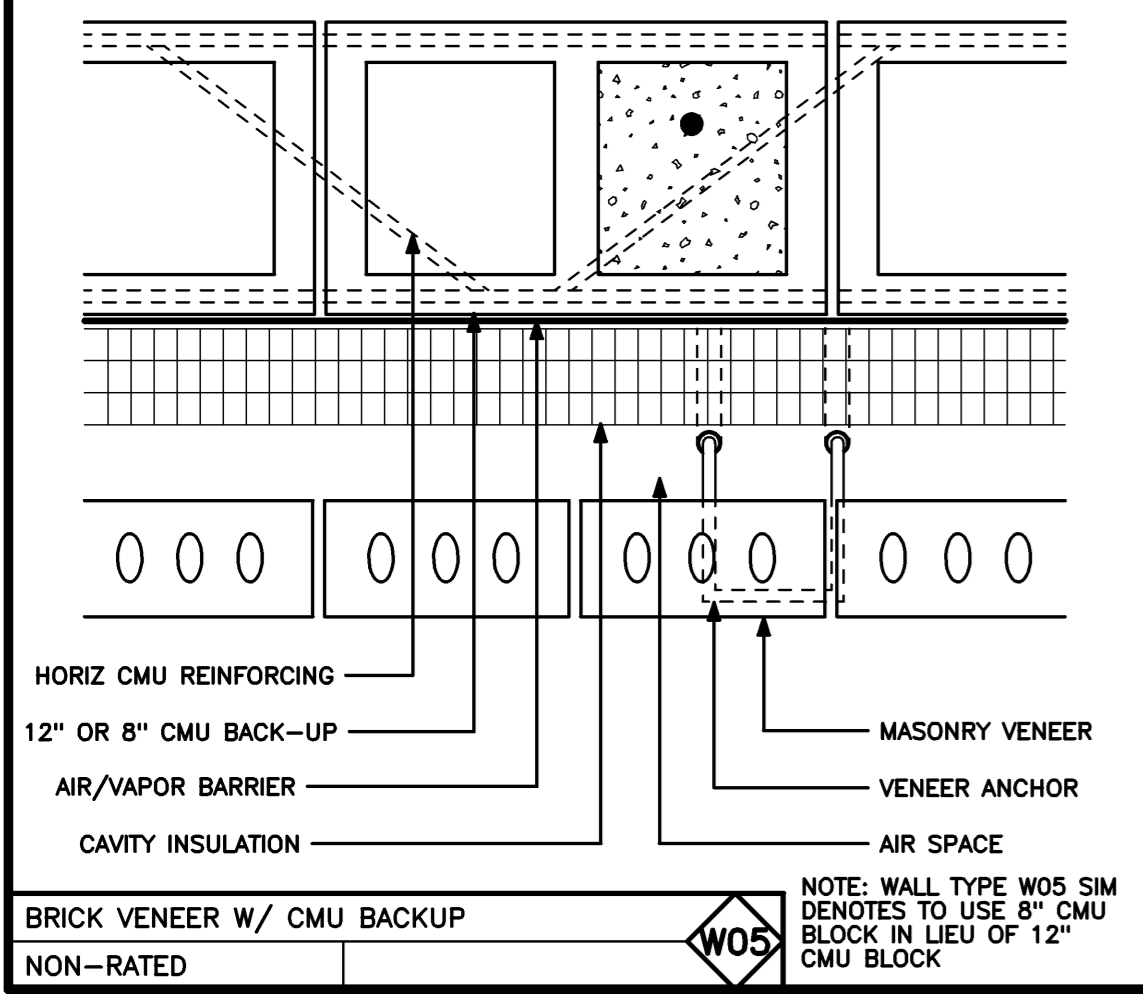
SHAFTWALL WITH 4" STUDS W/ BATT INS	1 HOUR FIRE-RATED	U.L. No. U417	314
-------------------------------------	-------------------	---------------	-----



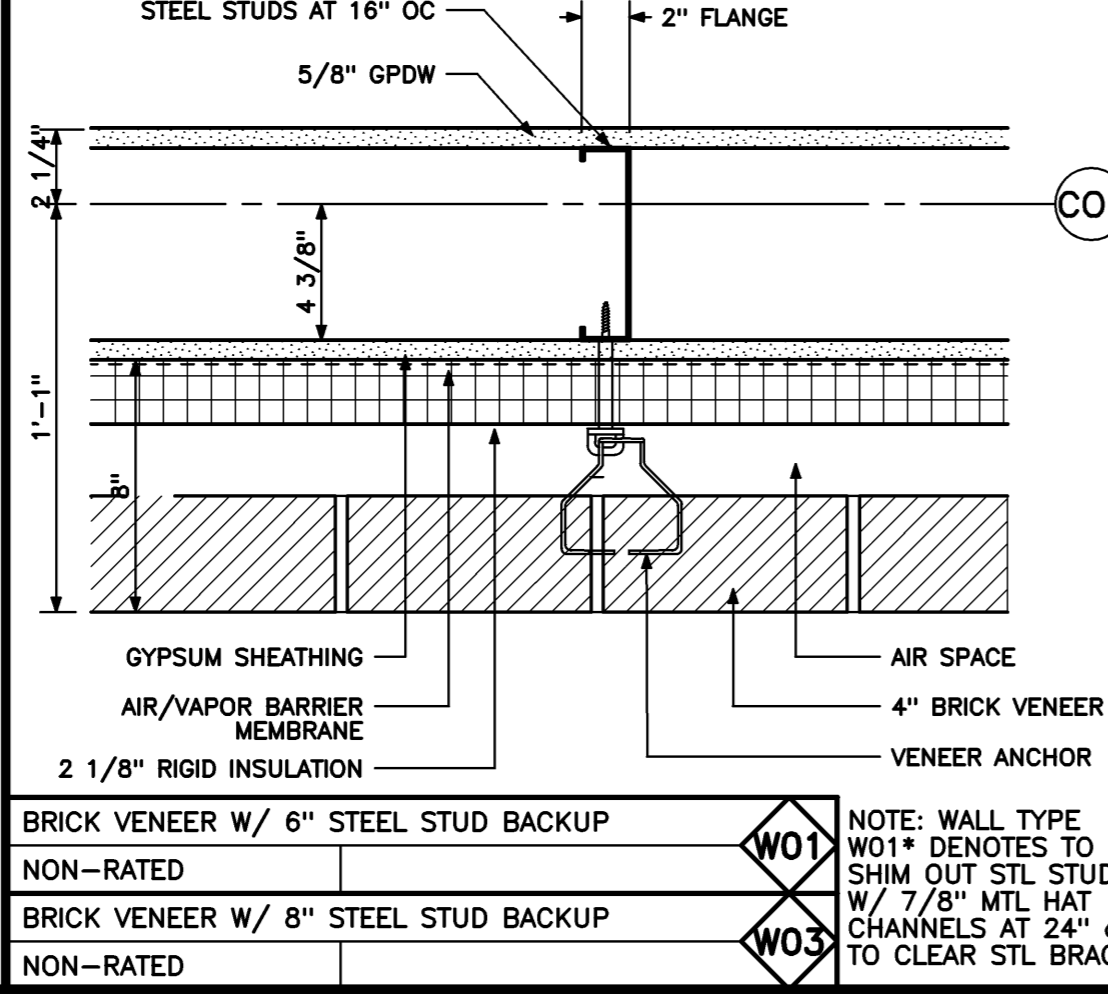
3 5/8" STEEL STUDS	NON-RATED	233
--------------------	-----------	-----



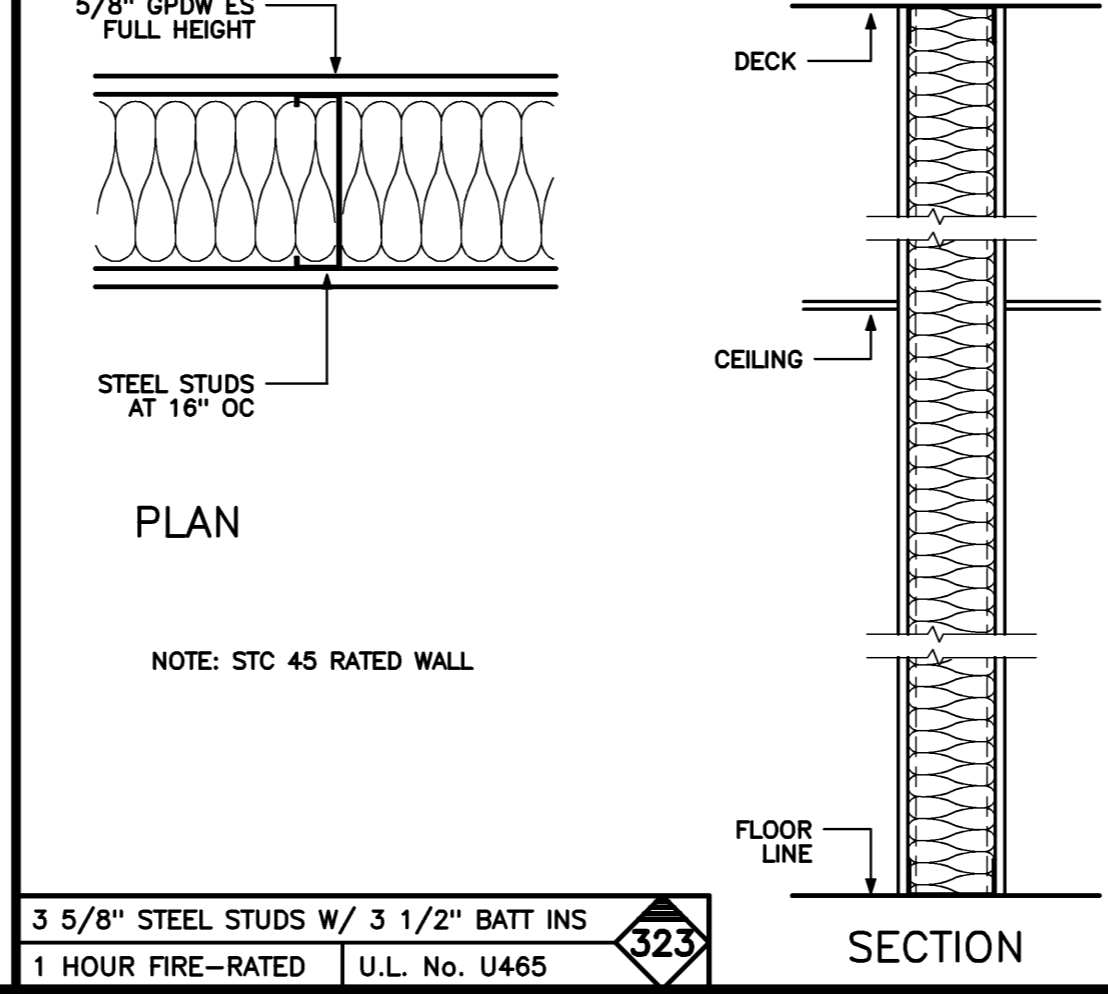
1 5/8" STEEL STUDS	NON-RATED	131
2 1/2" STEEL STUDS	NON-RATED	132
3 5/8" STEEL STUDS	NON-RATED	133



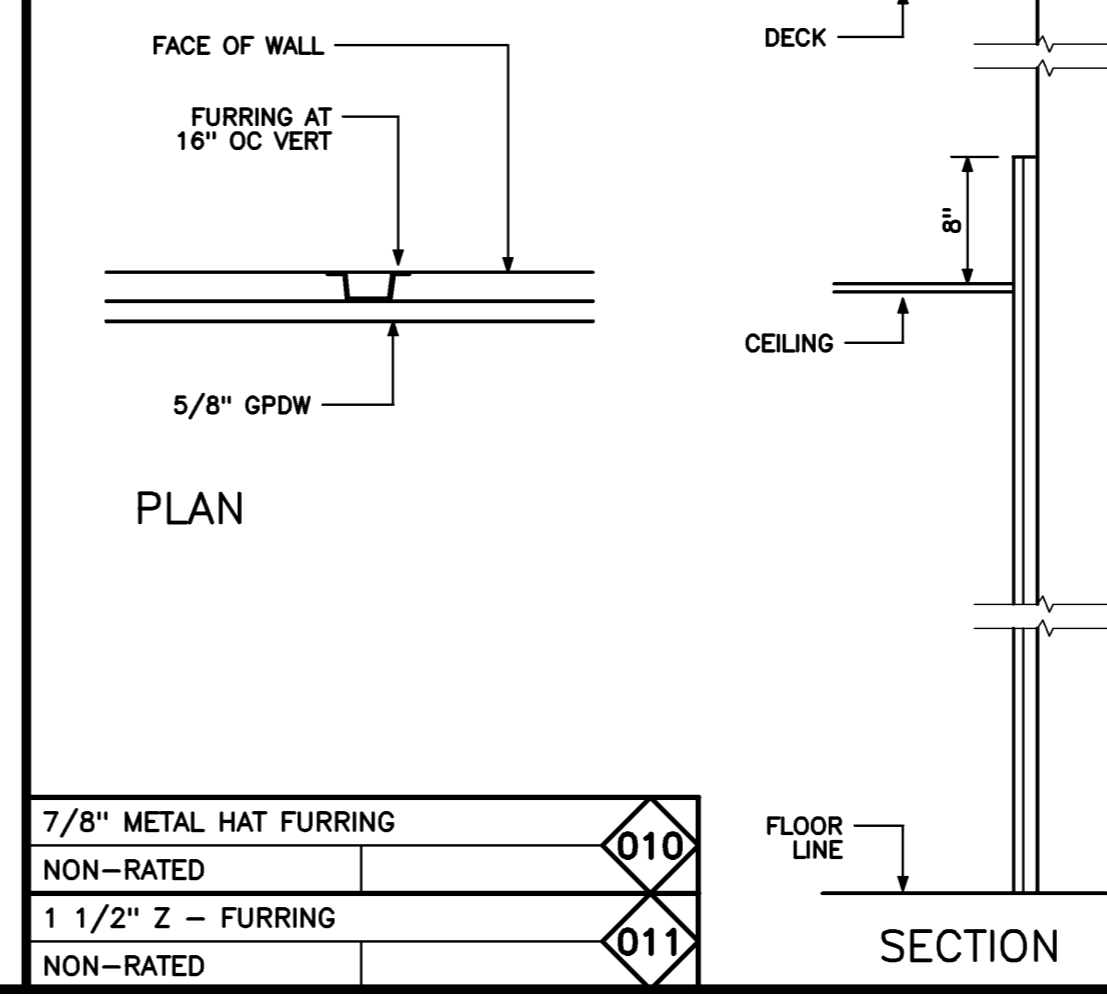
BRICK VENEER W/ CMU BACKUP	NON-RATED	W05
----------------------------	-----------	-----



BRICK VENEER W/ 6" STEEL STUD BACKUP	NON-RATED	W01
BRICK VENEER W/ 8" STEEL STUD BACKUP	NON-RATED	W03



3 5/8" STEEL STUDS W/ 3 1/2" BATT INS	1 HOUR FIRE-RATED	U.L. No. U465	323
---------------------------------------	-------------------	---------------	-----



7/8" METAL HAT FURRING	NON-RATED	010
1 1/2" Z - FURRING	NON-RATED	011

**GENERAL NOTES**

- SEE DETAILS D4/A40.1 FOR TYPICAL PARTITION CONNECTION DETAIL.
- SEE SECTIONS AND DETAILS FOR CONNECTIONS OTHER THAN THOSE NOTED ON DETAIL D4/A40.1.
- IN TOILET AND JAN ROOMS W/GPDW WALLS PROVIDE 5/8" M.R. GPDW TO 8" ABOVE CEILING IN LIEU OF REGULAR GPDW ON ALL STEEL STUD PARTITIONS WITHIN THE ROOM. USE REGULAR 5/8" GPDW TO TOP OF PARTITION. PROVIDE 5/8" TILE BACKER BOARD IN LIEU OF GPDW WHERE PORCELAIN TILE IS USED.
- ALL 1HR AND 2HR FIRE RATED WALLS SHALL BE IDENTIFIED ON THE SURFACE JUST ABOVE THE CEILING INDICATING THE WALL'S FIRE RATING: "1 HOUR", "2 HOUR" ETC IN RED OR ORANGE PAINT ON EACH SIDE OF THE PARTITION.

**PARTITION LEGEND**

STUD OR CMU SIZE	3 5/8" STEEL STUDS	1 HR FIRE-RATED	U.L. No. U465	010	PARTITION OR WALL TAG No.
FIRE-RATING					

1" = 1'-0" REF: NA

Architects + Engineers  
**HARRIMAN ASSOCIATES**

One Auburn Business Park  
Auburn, Maine 04210  
207.784.5100 tel  
207.783.3017 fax  
www.harriman.com  
Building communities since 1870  
© 2006

Project Title  
**WOODARD & CURRAN OFFICE ADDITION**

PORTLAND, MAINE

HA Project No. **05178**

Key Plan

05-15-06	ISSUED FOR CONSTRUCTION
03-14-06	FINAL REVIEW
02-03-06	DD REVIEW

Mark	Date	Description

Drawing Status	
----------------	--

Drawing Title  
**CONSTRUCTION SYSTEMS**

PA / PE: **JMB** Drawn By: **MCM**

Drawing Number  
**A40.1**